



# Yamaha 40XWT 2003

## Parts Manual

[www.floodmarine.co.uk](http://www.floodmarine.co.uk)

+44 2882 246 539

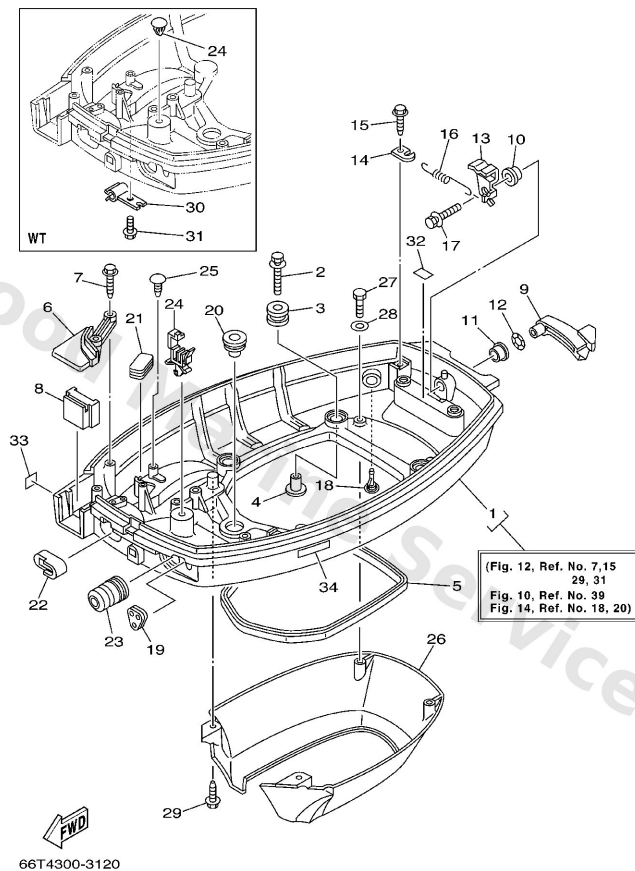
Authorised Yamaha Dealers



# Contents

<b>BOTTOM COWLING</b>	3
<b>BRACKET 1</b>	6
<b>BRACKET 2</b>	10
<b>BRACKET 3</b>	13
<b>CARBURETOR</b>	15
<b>CONTROL</b>	17
<b>CRANKSHAFT. PISTON</b>	19
<b>CYLINDER. CRANKCASE</b>	21
<b>ELECTRICAL 1</b>	23
<b>ELECTRICAL 2</b>	25
<b>FUEL</b>	28
<b>FUEL TANK</b>	31
<b>GENERATOR</b>	32
<b>INTAKE</b>	34
<b>LOWER CASING. DRIVE 1</b>	36
<b>LOWER CASING. DRIVE 2</b>	42
<b>POWER TRIM &amp; TILT ASSY</b>	45
<b>REMOTE CONTROL ASSY</b>	50
<b>REMOTE CONTROL ATTACHMENT</b>	55
<b>REMOTE CONTROL BOX</b>	56
<b>REPAIR KIT 1</b>	57
<b>REPAIR KIT 2</b>	59
<b>REPAIR KIT 3</b>	61
<b>STARTER</b>	62
<b>STARTING MOTOR</b>	65
<b>STEERING</b>	66
<b>STEERING GUIDE</b>	69
<b>TOP COWLING</b>	70
<b>UPPER CASING</b>	71

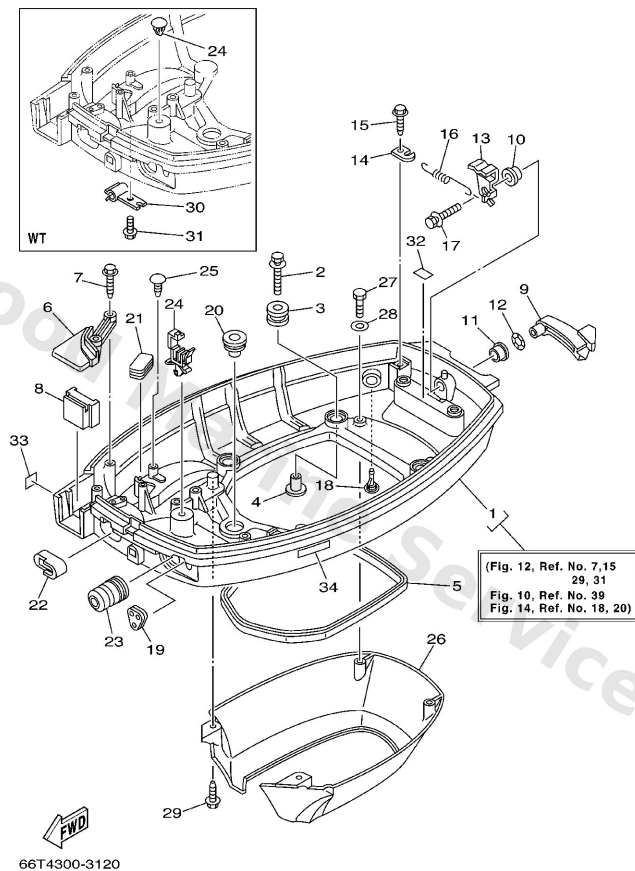
## Bottom Cowling



**C6**

Ref	Part	
1	<a href="#">66T-42710-01-4D</a> Bottom cowling assembly	<a href="#">Buy now</a>
2	<a href="#">90119-06M61</a> Bolt, with washer	<a href="#">Buy now</a>
3	<a href="#">90480-09M21</a> Grommet (6e9)	<a href="#">Buy now</a>
4	<a href="#">90387-06035</a> Coller (6e9)	<a href="#">Buy now</a>
5	<a href="#">66T-42716-00</a> Rubber, seal 1	<a href="#">Buy now</a>
6	<a href="#">66T-42738-00-5B</a> Plate, fitting	<a href="#">Buy now</a>
7	<a href="#">90109-06M81</a> Bolt	<a href="#">Buy now</a>
8	<a href="#">66T-42725-00</a> Grommet	<a href="#">Buy now</a>
8	<a href="#">66T-42725-20</a> Grommet	<a href="#">Buy now</a>
9	<a href="#">66T-42815-01-4D</a> Lever, clamp	<a href="#">Buy now</a>
10	<a href="#">90386-12M37</a> Bushing (6f5)	<a href="#">Buy now</a>
11	<a href="#">90386-12MA2</a> Bush	<a href="#">Buy now</a>
12	<a href="#">90206-12052</a> Washer, wave (666)	<a href="#">Buy now</a>
13	<a href="#">66T-42816-00</a> Lever, clamp	<a href="#">Buy now</a>
14	<a href="#">66T-43144-00</a> Hook, spring	<a href="#">Buy now</a>

## Bottom Cowling

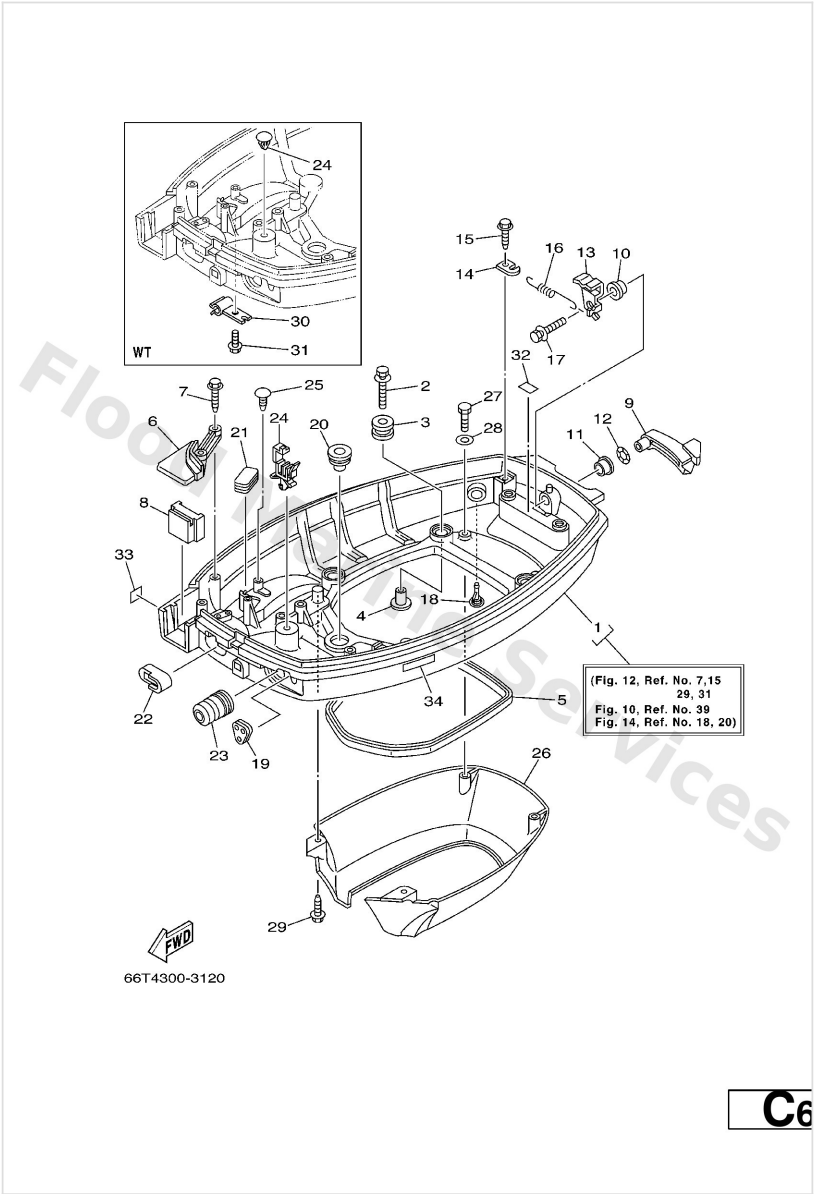


**C6**

Ref	Part	
15	<a href="#">90109-06M86</a> Bolt	<a href="#">Buy now</a>
16	<a href="#">90506-16M34</a> Spring, tension(64d)	<a href="#">Buy now</a>
17	<a href="#">90119-06M73</a> Bolt(gh1)	<a href="#">Buy now</a>
18	<a href="#">6E5-44391-00</a> Nipple, hose	<a href="#">Buy now</a>
19	<a href="#">65W-26326-00</a> Grommet	<a href="#">Buy now</a>
19	<a href="#">65W-26326-10</a> Grommet	<a href="#">Buy now</a>
20	<a href="#">676-42727-00</a> Grommet 4	<a href="#">Buy now</a>
21	<a href="#">6H1-42726-10</a> Grommet	<a href="#">Buy now</a>
21	<a href="#">6H4-42726-00</a> Grommet	<a href="#">Buy now</a>
22	<a href="#">66T-24329-00</a> Seal	<a href="#">Buy now</a>
23	<a href="#">65W-42726-00</a> Grommet	<a href="#">Buy now</a>
23	<a href="#">65W-42726-10</a> Grommet	<a href="#">Buy now</a>
24	<a href="#">90338-07M00</a> Plug(6j8)	<a href="#">Buy now</a>
24	<a href="#">90465-25M57</a> Clamp(63v)	<a href="#">Buy now</a>
25	<a href="#">90338-05M03</a> Plug (6h1)	<a href="#">Buy now</a>

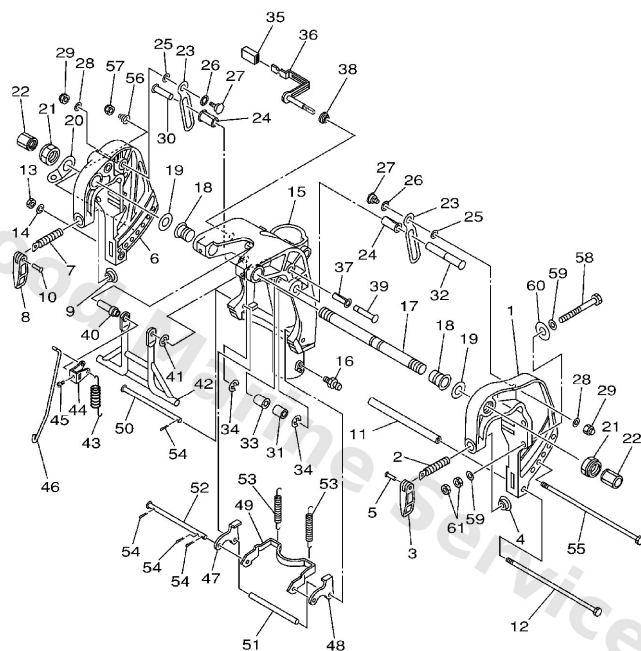


## Bottom Cowling



Ref	Part	
26	<a href="#">66T-42741-00</a> Apron	<a href="#">Buy now</a>
27	<a href="#">97095-06016</a> Bolt, hexagon deep recess	<a href="#">Buy now</a>
28	<a href="#">92995-06600</a> Washer, plain (646)	<a href="#">Buy now</a>
29	<a href="#">90109-06M80</a> Bolt	<a href="#">Buy now</a>
30	<a href="#">90464-09M49</a> Clamp	<a href="#">Buy now</a>
32	<a href="#">664-42791-10</a> Mark 1	<a href="#">Buy now</a>
33	<a href="#">6A1-28176-00</a> Label Caution	<a href="#">Buy now</a>
34	<a href="#">6E3-8257H-00</a> Plate Mark	<a href="#">Buy now</a>

# Bracket 1

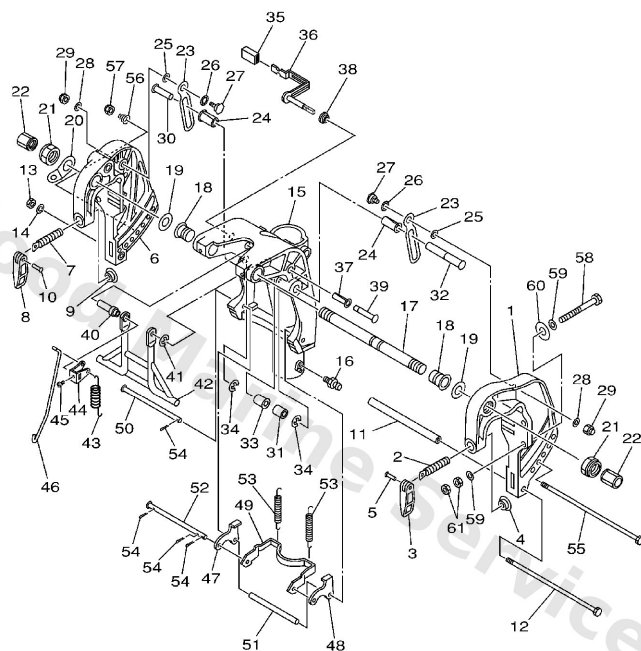


**FWD**  
66T0010-1180

**D5**

Ref	Part	
2	<a href="#">90149-14M12</a> Screw(6h4)	<a href="#">Buy now</a>
4	<a href="#">648-43114-01</a> Pad, transom clamp	<a href="#">Buy now</a>
5	<a href="#">90243-04007</a> Pin (663)	<a href="#">Buy now</a>
11	<a href="#">90387-08M29</a> Collar	<a href="#">Buy now</a>
12	<a href="#">90101-08M76</a> Bolt	<a href="#">Buy now</a>
13	<a href="#">95380-08600</a> Nut (661)	<a href="#">Buy now</a>
14	<a href="#">92990-08100</a> Ybs67-8 washer, spring	<a href="#">Buy now</a>
16	<a href="#">93700-06M03</a> Nipple, grease(6a1)	<a href="#">Buy now</a>
17	<a href="#">63D-43131-01</a> Bolt, clamp bracket	<a href="#">Buy now</a>
18	<a href="#">90386-22M15</a> Bushing (688)	<a href="#">Buy now</a>
19	<a href="#">90201-22M03</a> Washer, plate(64j)	<a href="#">Buy now</a>
20	<a href="#">6J8-43113-01</a> Plate, clamp bracket	<a href="#">Buy now</a>
21	<a href="#">90185-22043</a> Nut, self-locking	<a href="#">Buy now</a>
22	<a href="#">6G5-43145-01</a> Cap, clamp bracket	<a href="#">Buy now</a>
23	<a href="#">66T-43627-00</a> Stopper	<a href="#">Buy now</a>

# Bracket 1

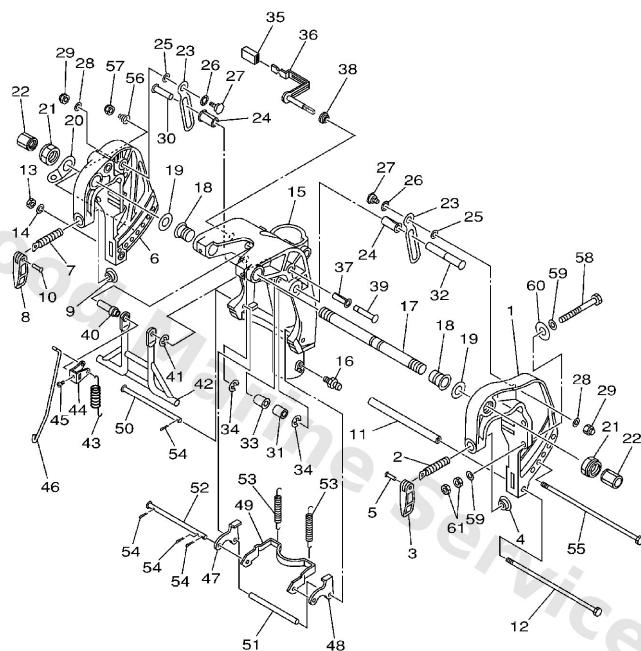


66T0010-1180

**D5**

Ref	Part	
24	<a href="#">90386-12M98</a> Bush	<a href="#">Buy now</a>
25	<a href="#">90202-12031</a> Washer, plate 6484412600	<a href="#">Buy now</a>
26	<a href="#">90206-12M00</a> Washer, wave (676)	<a href="#">Buy now</a>
27	<a href="#">90109-08M90</a> Bolt	<a href="#">Buy now</a>
28	<a href="#">90201-08M07</a> Washer, plate	<a href="#">Buy now</a>
29	<a href="#">90185-08057</a> Nut, nylon (6j8)	<a href="#">Buy now</a>
30	<a href="#">90249-12M34</a> Pin	<a href="#">Buy now</a>
31	<a href="#">90387-12M04</a> Collar	<a href="#">Buy now</a>
32	<a href="#">90249-12M39</a> Pin	<a href="#">Buy now</a>
33	<a href="#">90386-12MA0</a> Bush, solid	<a href="#">Buy now</a>
34	<a href="#">93430-10M00</a> Circlip	<a href="#">Buy now</a>
35	<a href="#">682-43318-01</a> Cover	<a href="#">Buy now</a>
36	<a href="#">65W-43630-11</a> Tilt lever assembly	<a href="#">Buy now</a>
37	<a href="#">90386-10M99</a> Bush	<a href="#">Buy now</a>
38	<a href="#">90386-07MA2</a> Bush	<a href="#">Buy now</a>

# Bracket 1

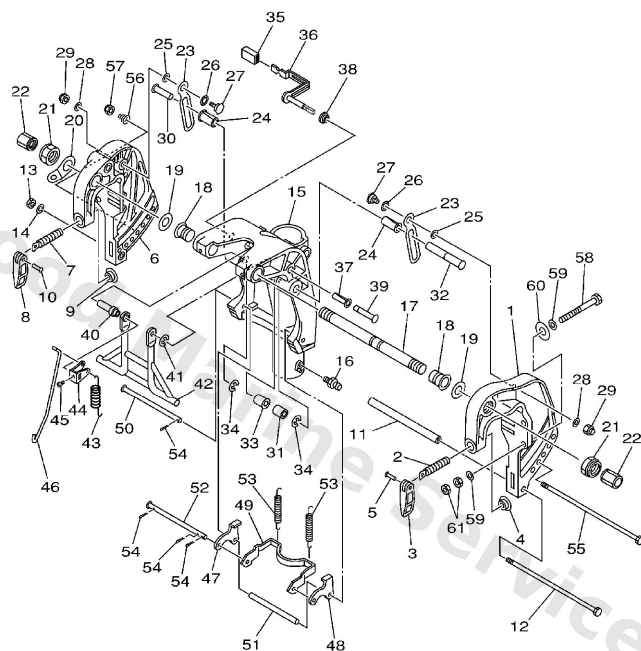


66T0010-1180

**D5**

Ref	Part	
39	<a href="#">90249-10M31</a> Pin	<a href="#">Buy now</a>
40	<a href="#">90387-07M05</a> Collar	<a href="#">Buy now</a>
41	<a href="#">99080-08600</a> Circlip	<a href="#">Buy now</a>
42	<a href="#">66T-43350-02</a> Receiver assembly	<a href="#">Buy now</a>
43	<a href="#">90506-20M37</a> Spring, tension	<a href="#">Buy now</a>
44	<a href="#">66T-43631-11</a> Lever, tilt	<a href="#">Buy now</a>
45	<a href="#">90157-05014</a> Screw, pan head	<a href="#">Buy now</a>
46	<a href="#">65W-43616-00</a> Rod, tilt lock	<a href="#">Buy now</a>
47	<a href="#">65W-43614-01</a> Plate, tilt lock	<a href="#">Buy now</a>
48	<a href="#">65W-43615-01</a> Plate, tilt lock	<a href="#">Buy now</a>
49	<a href="#">65W-43613-00</a> Arm, tilt lock	<a href="#">Buy now</a>
50	<a href="#">90249-07M32</a> Pin	<a href="#">Buy now</a>
51	<a href="#">90387-07M29</a> Collar	<a href="#">Buy now</a>
52	<a href="#">90249-07M33</a> Pin	<a href="#">Buy now</a>
53	<a href="#">90506-30M00</a> Spring, tension (676)	<a href="#">Buy now</a>

# Bracket 1

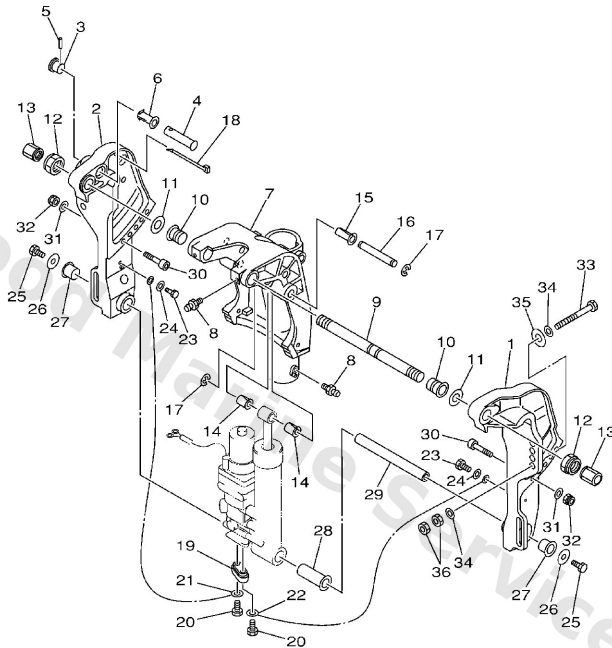


66T0010-1180

**D5**

Ref	Part	
54	<a href="#">91490-20012</a> Pin, cotter (648)	<a href="#">Buy now</a>
55	<a href="#">90101-08M28</a> Bolt	<a href="#">Buy now</a>
56	<a href="#">90502-10M06</a> Spring, conical(6g1)	<a href="#">Buy now</a>
58	<a href="#">90101-10M58</a> Bolt	<a href="#">Buy now</a>
59	<a href="#">92995-10600</a> Washer, plate	<a href="#">Buy now</a>
60	<a href="#">90201-12426</a> Washer, plate(663)	<a href="#">Buy now</a>
61	<a href="#">95380-10600</a> Nut(624)	<a href="#">Buy now</a>

## Bracket 2

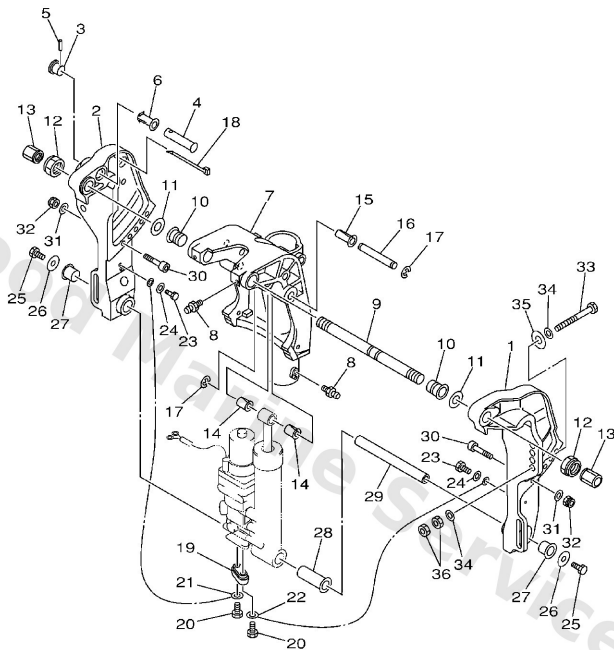


  
65W0010-1230

**E1**

Ref	Part	
3	<a href="#">65W-43192-00</a> Knob, stopper	<a href="#">Buy now</a>
4	<a href="#">65W-43191-00</a> Shaft, stopper	<a href="#">Buy now</a>
5	<a href="#">91690-30018</a> 926-51502-00 pin, spring (700)	<a href="#">Buy now</a>
6	<a href="#">90386-14MA1</a> Bush	<a href="#">Buy now</a>
8	<a href="#">93700-06M03</a> Nipple, grease(6a1)	<a href="#">Buy now</a>
9	<a href="#">63D-43131-01</a> Bolt, clamp bracket	<a href="#">Buy now</a>
10	<a href="#">90386-22M15</a> Bushing (688)	<a href="#">Buy now</a>
11	<a href="#">90201-22M03</a> Washer, plate(64j)	<a href="#">Buy now</a>
12	<a href="#">90185-22M11</a> Nut, self-locking	<a href="#">Buy now</a>
13	<a href="#">6G5-43145-01</a> Cap, clamp bracket	<a href="#">Buy now</a>
14	<a href="#">90386-12MA0</a> Bush, solid	<a href="#">Buy now</a>
15	<a href="#">90386-12M98</a> Bush	<a href="#">Buy now</a>
16	<a href="#">90249-12M38</a> Pin	<a href="#">Buy now</a>
17	<a href="#">93430-10M00</a> Circlip	<a href="#">Buy now</a>
18	<a href="#">90465-13M11</a> Clamp (6e5)	<a href="#">Buy now</a>

## Bracket 2

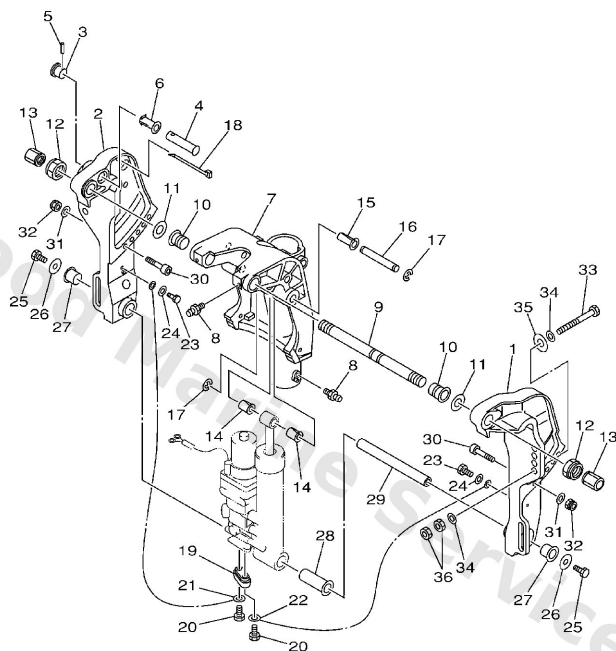


65W0010-1230

**E1**

Ref	Part	
19	<a href="#">65W-45251-00</a> Anode	<a href="#">Buy now</a>
20	<a href="#">90101-06020</a> Bolt	<a href="#">Buy now</a>
21	<a href="#">6H1-82148-00</a> Wire, lead	<a href="#">Buy now</a>
22	<a href="#">6U0-82127-00</a> Wire, lead 5	<a href="#">Buy now</a>
23	<a href="#">97095-06014</a> Bolt(gj3)	<a href="#">Buy now</a>
24	<a href="#">92995-06600</a> Washer, plain (646)	<a href="#">Buy now</a>
25	<a href="#">97080-08016</a> Bolt	<a href="#">Buy now</a>
26	<a href="#">90201-08M00</a> Washer, plate(6e0)	<a href="#">Buy now</a>
27	<a href="#">90386-18M44</a> Bushing (6g5)	<a href="#">Buy now</a>
28	<a href="#">90386-18MA0</a> Bush	<a href="#">Buy now</a>
29	<a href="#">90249-18M35</a> Pin, lower shock mount	<a href="#">Buy now</a>
30	<a href="#">90110-10M02</a> Bolt, hexagon socket head	<a href="#">Buy now</a>
31	<a href="#">92995-10600</a> Washer, plate	<a href="#">Buy now</a>
32	<a href="#">90185-10M13</a> Nut, self-locking	<a href="#">Buy now</a>
33	<a href="#">90101-12M65</a> Bolt	<a href="#">Buy now</a>

## Bracket 2



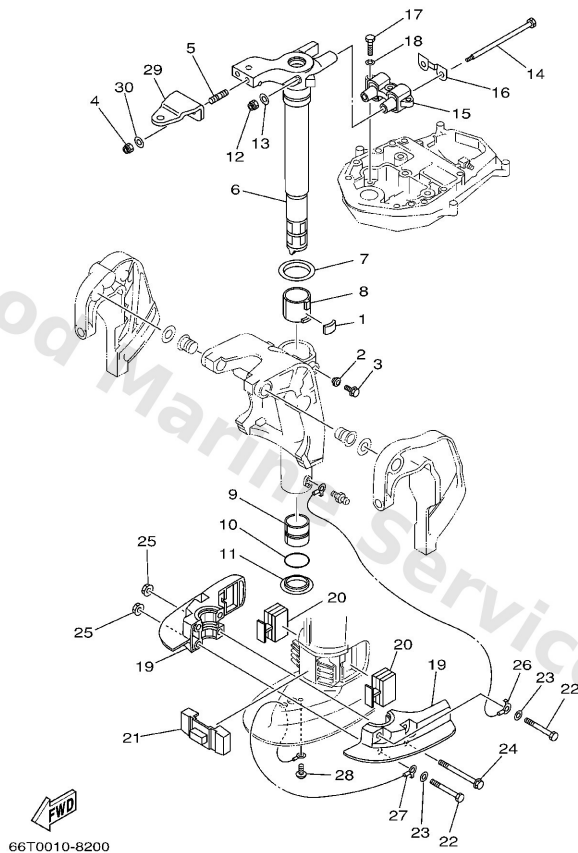
65W0010-1230

**E1**

Ref	Part	
34	<a href="#">92995-12200</a> Ybs66-12 washer,plain	<a href="#">Buy now</a>
35	<a href="#">90201-12426</a> Washe, plate(663)	<a href="#">Buy now</a>
36	<a href="#">95380-12600</a> Nut (707)	<a href="#">Buy now</a>



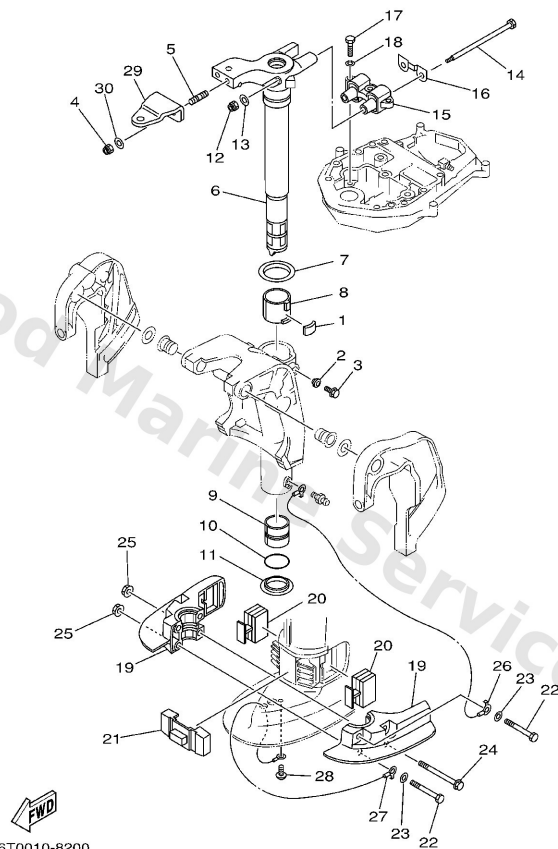
## Bracket 3



**E3**

Ref	Part	
1	<a href="#">648-42528-00</a> Plate, friction	<a href="#">Buy now</a>
2	<a href="#">65W-43373-00</a> Seal, damper	<a href="#">Buy now</a>
3	<a href="#">90105-08M76</a> Bolt, washer based	<a href="#">Buy now</a>
4	<a href="#">90185-10051</a> Nut, self-locking	<a href="#">Buy now</a>
5	<a href="#">90116-10M28</a> Bolt, stud	<a href="#">Buy now</a>
7	<a href="#">90209-52M00</a> Washer (676)	<a href="#">Buy now</a>
8	<a href="#">90386-52M02</a> Bushing (676)	<a href="#">Buy now</a>
9	<a href="#">90386-44M03</a> Bushing (676)	<a href="#">Buy now</a>
10	<a href="#">93210-43MJ0</a> O-ring	<a href="#">Buy now</a>
11	<a href="#">90386-44M99</a> Bush	<a href="#">Buy now</a>
12	<a href="#">90185-08045</a> Nut, self-locking	<a href="#">Buy now</a>
13	<a href="#">92995-08200</a> Ybs66-8 washer, plain	<a href="#">Buy now</a>
14	<a href="#">90101-08M86</a> Bolt (6h4)	<a href="#">Buy now</a>
16	<a href="#">66T-44526-00</a> Plate	<a href="#">Buy now</a>
17	<a href="#">97075-08030</a> Bolt, hexagon (fj1)	<a href="#">Buy now</a>

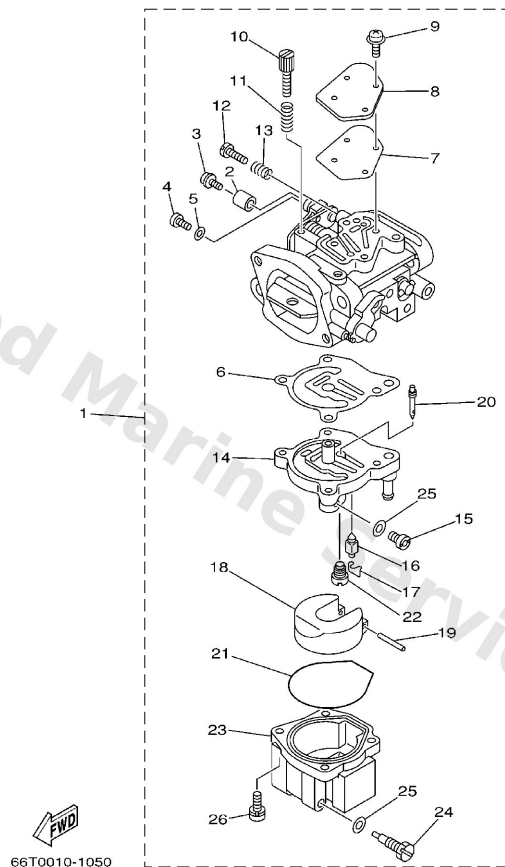
## Bracket 3



**E3**

Ref	Part	
18	<a href="#">92995-08100</a> Ybs67-8 washer, spring	<a href="#">Buy now</a>
20	<a href="#">65W-44555-10</a> Mount damper, lower side	<a href="#">Buy now</a>
21	<a href="#">66T-44575-00</a> Damper, lower mount rubber	<a href="#">Buy now</a>
22	<a href="#">97075-10070</a> Bolt, hexagon w/w deep recess	<a href="#">Buy now</a>
23	<a href="#">92995-10600</a> Washer, plate	<a href="#">Buy now</a>
24	<a href="#">90119-10M04</a> Bolt, with washer	<a href="#">Buy now</a>
25	<a href="#">90179-10M33</a> Nut	<a href="#">Buy now</a>
26	<a href="#">66T-82127-00</a> Wire, lead 2	<a href="#">Buy now</a>
27	<a href="#">66T-82127-10</a> Wire, lead 2	<a href="#">Buy now</a>
28	<a href="#">97885-06008</a> Screw, pan head(6a3)	<a href="#">Buy now</a>
29	<a href="#">65W-48511-00</a> Hook, steering	<a href="#">Buy now</a>
30	<a href="#">90201-10120</a> Washer, plate	<a href="#">Buy now</a>

# Carburetor

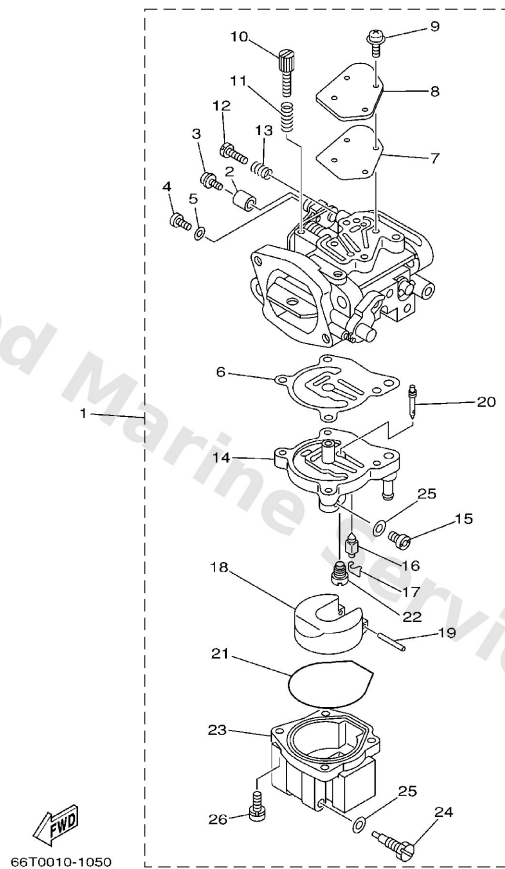


66T0010-1050

**B2**

Ref	Part	
1	<a href="#">66T-14301-02</a> Carburetor assembly 1	<a href="#">Buy now</a>
1	<a href="#">66T-14301-12</a> Carburetor assembly 1	<a href="#">Buy now</a>
2	<a href="#">66T-14578-00</a> Collar	<a href="#">Buy now</a>
3	<a href="#">66T-14584-00</a> Stopper	<a href="#">Buy now</a>
4	<a href="#">6J8-14592-01</a> Screw	<a href="#">Buy now</a>
5	<a href="#">92990-05600</a> Washer, plain (646)	<a href="#">Buy now</a>
6	<a href="#">66T-14384-01</a> Gasket, float chamber	<a href="#">Buy now</a>
7	<a href="#">66T-14536-00</a> Gasket	<a href="#">Buy now</a>
8	<a href="#">66T-14527-00</a> Plate	<a href="#">Buy now</a>
9	<a href="#">97980-04112</a> Screw, pan head (686)	<a href="#">Buy now</a>
10	<a href="#">66T-14523-00</a> Screw, stop	<a href="#">Buy now</a>
11	<a href="#">6J8-14334-00</a> Spring, throttle	<a href="#">Buy now</a>
12	<a href="#">6E5-14323-03</a> Screw, air adjusting	<a href="#">Buy now</a>
13	<a href="#">6E5-14223-00</a> Spring, air adjusting	<a href="#">Buy now</a>
14	<a href="#">66T-14945-02</a> Spacer assembly (#38)	<a href="#">Buy now</a>

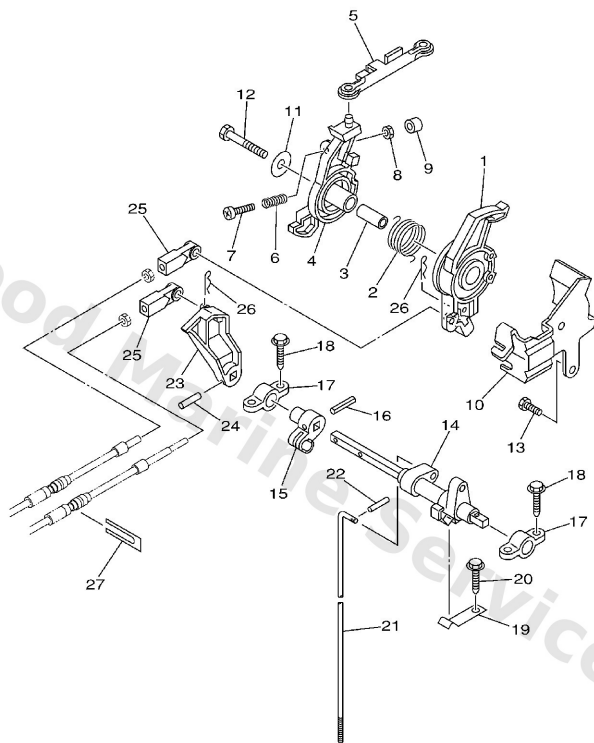
# Carburetor



**B2**

Ref	Part	
15	<a href="#">61A-1492E-85</a> Jet, main (#170)	<a href="#">Buy now</a>
16	<a href="#">6E5-14546-00</a> Valve, needle	<a href="#">Buy now</a>
17	<a href="#">6E5-14159-00</a> Clip	<a href="#">Buy now</a>
18	<a href="#">6E5-14385-02</a> Float	<a href="#">Buy now</a>
19	<a href="#">6E5-14386-02</a> Pin, float	<a href="#">Buy now</a>
20	<a href="#">66T-1492F-35</a> Jet, air slow (#70)	<a href="#">Buy now</a>
21	<a href="#">66T-14984-00</a> Gasket, float chamber	<a href="#">Buy now</a>
22	<a href="#">66T-14992-00</a> Plug	<a href="#">Buy now</a>
23	<a href="#">66T-14981-00</a> Body, float chamber	<a href="#">Buy now</a>
24	<a href="#">66T-14991-00</a> Plug, drain	<a href="#">Buy now</a>
25	<a href="#">66T-14959-00</a> Gasket	<a href="#">Buy now</a>
26	<a href="#">97980-05125</a> Screw, panhead (a93)	<a href="#">Buy now</a>

## Control

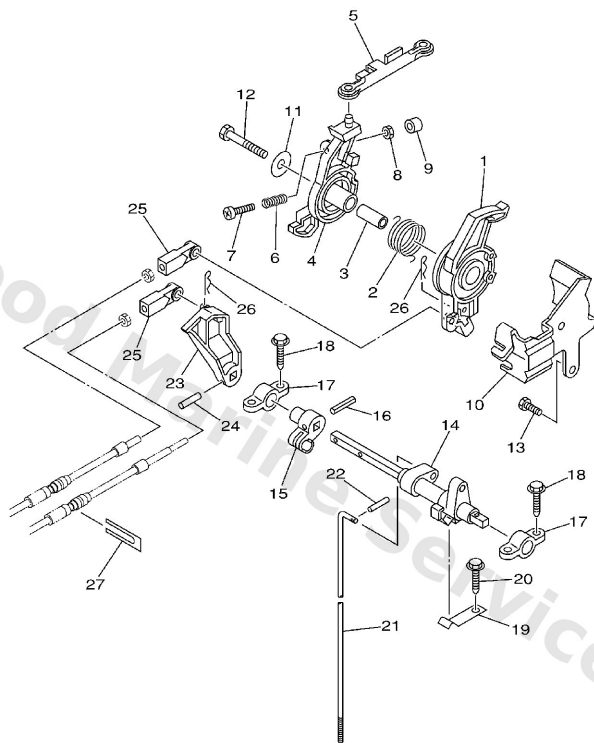


66T0664-1140

**D3**

Ref	Part	
1	<a href="#">66T-41638-00</a> Pulley	<a href="#">Buy now</a>
2	<a href="#">66T-42167-00</a> Spring 1	<a href="#">Buy now</a>
3	<a href="#">90387-08M16</a> Collar	<a href="#">Buy now</a>
4	<a href="#">66T-41631-01</a> Lever, magneto control	<a href="#">Buy now</a>
5	<a href="#">66T-41237-00</a> Joint, link	<a href="#">Buy now</a>
6	<a href="#">90501-10M84</a> Spring, compression	<a href="#">Buy now</a>
7	<a href="#">97880-06035</a> Screw, pan head(6h4)	<a href="#">Buy now</a>
8	<a href="#">95380-06700</a> Nut	<a href="#">Buy now</a>
9	<a href="#">688-44194-00</a> Cap	<a href="#">Buy now</a>
10	<a href="#">66T-14497-00</a> Stay, throttle wire	<a href="#">Buy now</a>
11	<a href="#">90201-08M54</a> Washer, plate (6e5)	<a href="#">Buy now</a>
12	<a href="#">97095-08045</a> Bolt, hexagon	<a href="#">Buy now</a>
13	<a href="#">97095-06014</a> Bolt(gj3)	<a href="#">Buy now</a>
14	<a href="#">66T-44121-00</a> Lever, shift rod	<a href="#">Buy now</a>
15	<a href="#">66M-44122-00</a> Bushing, shift rod lever	<a href="#">Buy now</a>

## Control

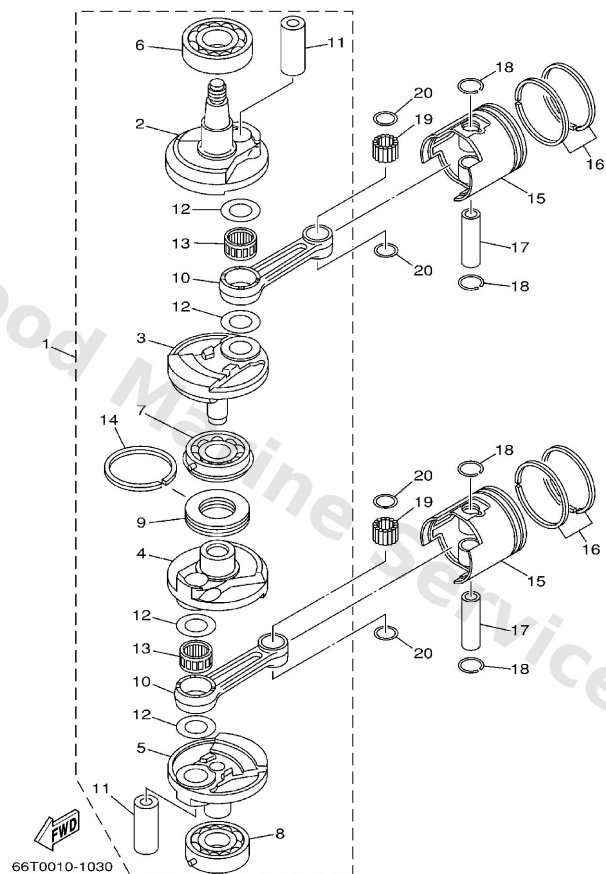


66T0664-1140

**D3**

Ref	Part	
16	<a href="#">90254-03M05</a> Pin, spring	<a href="#">Buy now</a>
17	<a href="#">6F5-41662-00</a> Bracket 2	<a href="#">Buy now</a>
18	<a href="#">90109-06M81</a> Bolt	<a href="#">Buy now</a>
19	<a href="#">682-44116-01</a> Spring	<a href="#">Buy now</a>
20	<a href="#">90109-06M86</a> Bolt	<a href="#">Buy now</a>
21	<a href="#">66T-44143-10</a> Rod, shift L	<a href="#">Buy now</a>
22	<a href="#">91490-16012</a> Pin, cotter (e57)	<a href="#">Buy now</a>
23	<a href="#">66T-44125-01</a> Lever, shift rod	<a href="#">Buy now</a>
24	<a href="#">90254-03M04</a> Pin, spring (6h3)	<a href="#">Buy now</a>
25	<a href="#">663-48344-00</a> Cable end, remote control	<a href="#">Buy now</a>
26	<a href="#">90468-18008</a> Clip 620436610000	<a href="#">Buy now</a>
27	<a href="#">6H3-48538-00</a> Clamp, cable	<a href="#">Buy now</a>

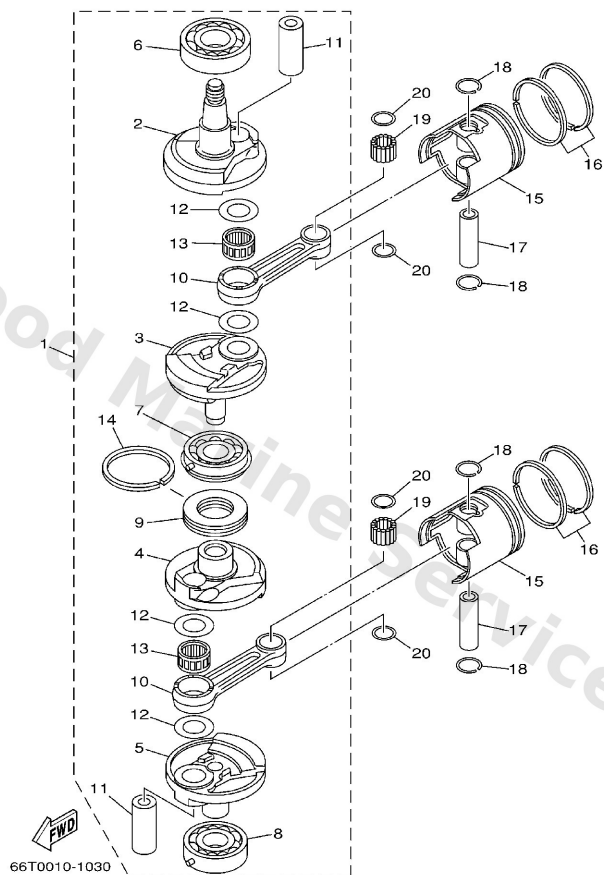
# Crankshaft. Piston



**A7**

Ref	Part	
1	<a href="#">66T-11400-01</a> Crankshaft assembly	<a href="#">Buy now</a>
2	<a href="#">66T-11412-00</a> Crank 1	<a href="#">Buy now</a>
3	<a href="#">66T-11422-00</a> Crank 2	<a href="#">Buy now</a>
4	<a href="#">66T-11432-00</a> Crank 3	<a href="#">Buy now</a>
5	<a href="#">66T-11442-00</a> Crank 4	<a href="#">Buy now</a>
6	<a href="#">93306-307U0</a> Brg,r-b 6307 80mm 449g (6f5)	<a href="#">Buy now</a>
7	<a href="#">93332-000UE</a> Bearing	<a href="#">Buy now</a>
8	<a href="#">93306-306V5</a> Bearing	<a href="#">Buy now</a>
9	<a href="#">6F5-11515-00</a> Seal, labyrinth 1	<a href="#">Buy now</a>
10	<a href="#">6F5-11651-00</a> Rod, connecting	<a href="#">Buy now</a>
11	<a href="#">66T-11681-00</a> Pin, crank 1	<a href="#">Buy now</a>
12	<a href="#">90209-27M07</a> Washer	<a href="#">Buy now</a>
13	<a href="#">93310-727U0</a> Bearing	<a href="#">Buy now</a>
14	<a href="#">93440-68M03</a> Circlip (6f5)	<a href="#">Buy now</a>
15	<a href="#">66T-11631-01-93</a> Piston (std)	<a href="#">Buy now</a>

## Crankshaft. Piston

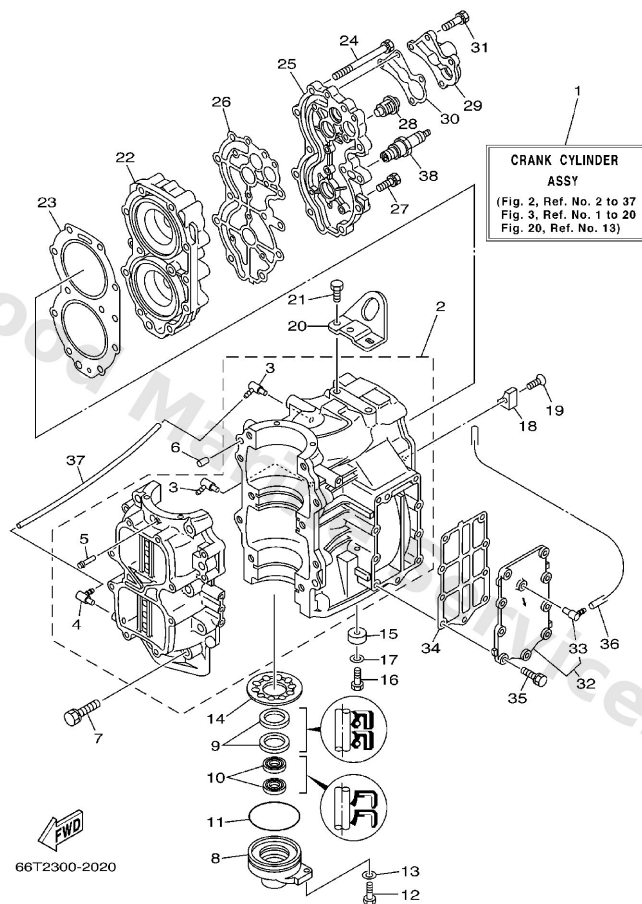


**A7**

Ref	Part	
15	<a href="#">66T-11635-01</a> Piston (0.25mm o/s) AP	<a href="#">Buy now</a>
15	<a href="#">66T-11636-01</a> Piston (0.50mm o/s) AP	<a href="#">Buy now</a>
16	<a href="#">66T-11603-00</a> Piston ring set (std)	<a href="#">Buy now</a>
16	<a href="#">66T-11604-00</a> Piston ring set (0.25mm o/s) AP	<a href="#">Buy now</a>
16	<a href="#">66T-11605-00</a> Piston ring set (0.50mm o/s) AP	<a href="#">Buy now</a>
17	<a href="#">6F5-11633-00</a> Pin, piston	<a href="#">Buy now</a>
18	<a href="#">663-11634-00</a> Clip, piston pin	<a href="#">Buy now</a>
19	<a href="#">93603-21111</a> Pin, dowel(663)	<a href="#">Buy now</a>
20	<a href="#">90201-20417</a> Washer, plate(663)	<a href="#">Buy now</a>



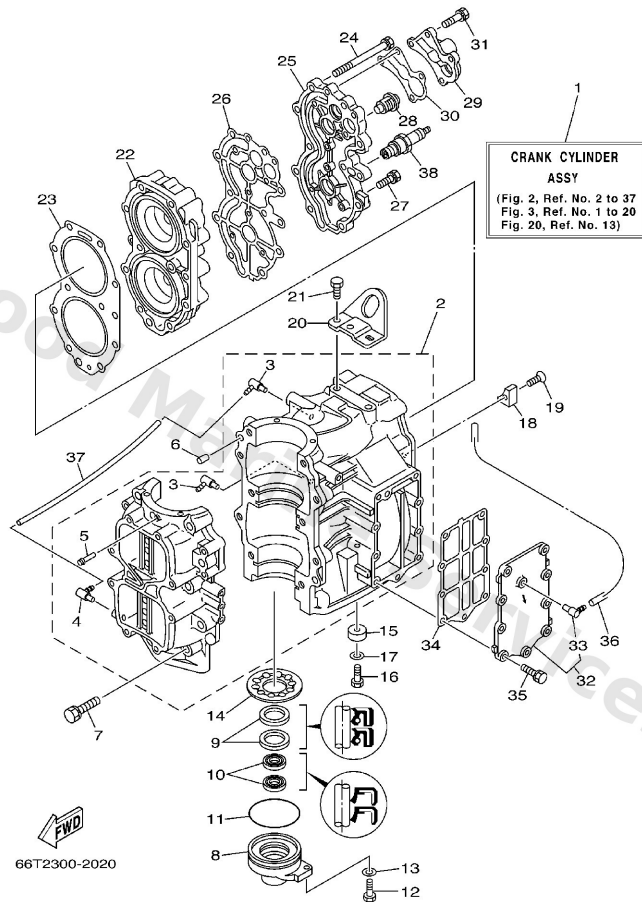
# Cylinder. Crankcase



A5

Ref	Part	
3	<a href="#">6E5-13552-01</a> Nozzle	<a href="#">Buy now</a>
5	<a href="#">624-14485-00</a> Pipe, joint	<a href="#">Buy now</a>
6	<a href="#">93608-12063</a> Pin, dowel (626)	<a href="#">Buy now</a>
7	<a href="#">90119-10005</a> Bolt, with washer	<a href="#">Buy now</a>
9	<a href="#">93102-30M56</a> Oil seal	<a href="#">Buy now</a>
10	<a href="#">93101-16001</a> Oil seal	<a href="#">Buy now</a>
11	<a href="#">93210-65M50</a> O-ring	<a href="#">Buy now</a>
12	<a href="#">97095-06020</a> Bolt(7u8)	<a href="#">Buy now</a>
13	<a href="#">92995-06600</a> Washer, plain (646)	<a href="#">Buy now</a>
14	<a href="#">66T-11565-00</a> Washer, bearing cover	<a href="#">Buy now</a>
15	<a href="#">676-45251-00</a> Anode	<a href="#">Buy now</a>
18	<a href="#">676-11325-00</a> Anode	<a href="#">Buy now</a>
19	<a href="#">90141-06M00</a> Screw, countersunk	<a href="#">Buy now</a>
20	<a href="#">66T-11119-00</a> Hanger, engine	<a href="#">Buy now</a>
21	<a href="#">90101-08002</a> Bolt	<a href="#">Buy now</a>

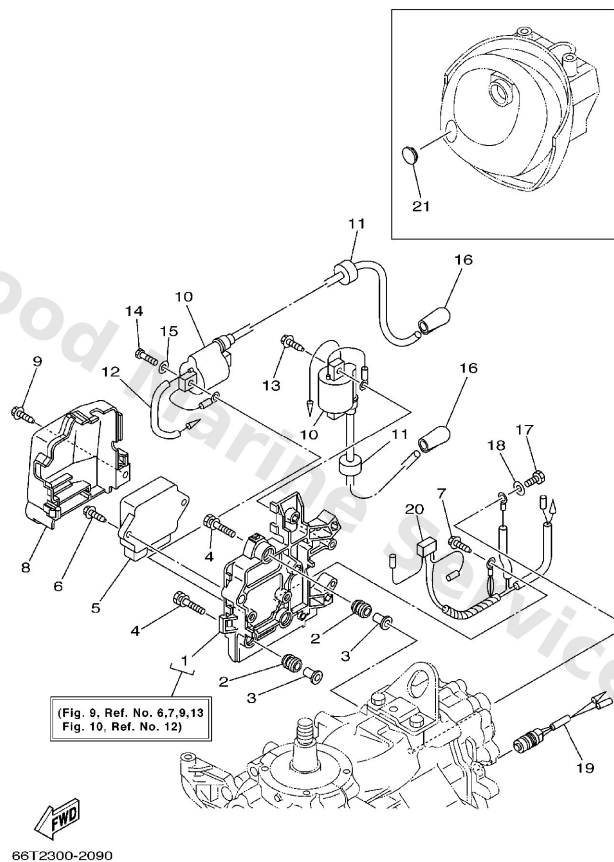
# Cylinder. Crankcase



**A5**

Ref	Part	
23	<a href="#">66T-11181-A2</a> Gasket, cylinder head 1	<a href="#">Buy now</a>
24	<a href="#">90119-08MA5</a> Bolt, with washer	<a href="#">Buy now</a>
26	<a href="#">66T-11193-A2</a> Gasket, head cover 1	<a href="#">Buy now</a>
27	<a href="#">90119-06MA3</a> Bolt, with washer	<a href="#">Buy now</a>
28	<a href="#">6E5-12411-01</a> Thermostat	<a href="#">Buy now</a>
29	<a href="#">676-12413-00-1S</a> Cover, thermostat	<a href="#">Buy now</a>
30	<a href="#">676-12414-A1</a> Gasket, cover	<a href="#">Buy now</a>
31	<a href="#">90119-06MA5</a> Bolt, with washer	<a href="#">Buy now</a>
32	<a href="#">66T-41113-00-1S</a> Outer cover, exhaust	<a href="#">Buy now</a>
33	<a href="#">676-11372-00</a> Nipple, hose	<a href="#">Buy now</a>
34	<a href="#">66T-41114-A0</a> Gasket, exhaust outer cover	<a href="#">Buy now</a>
36	<a href="#">90445-09M75</a> Hose (I1500)	<a href="#">Buy now</a>
37	<a href="#">90445-07M08</a> Hose (I390)	<a href="#">Buy now</a>
38	<a href="#">94702-00272</a> Plug, spark (br7hs)	<a href="#">Buy now</a>

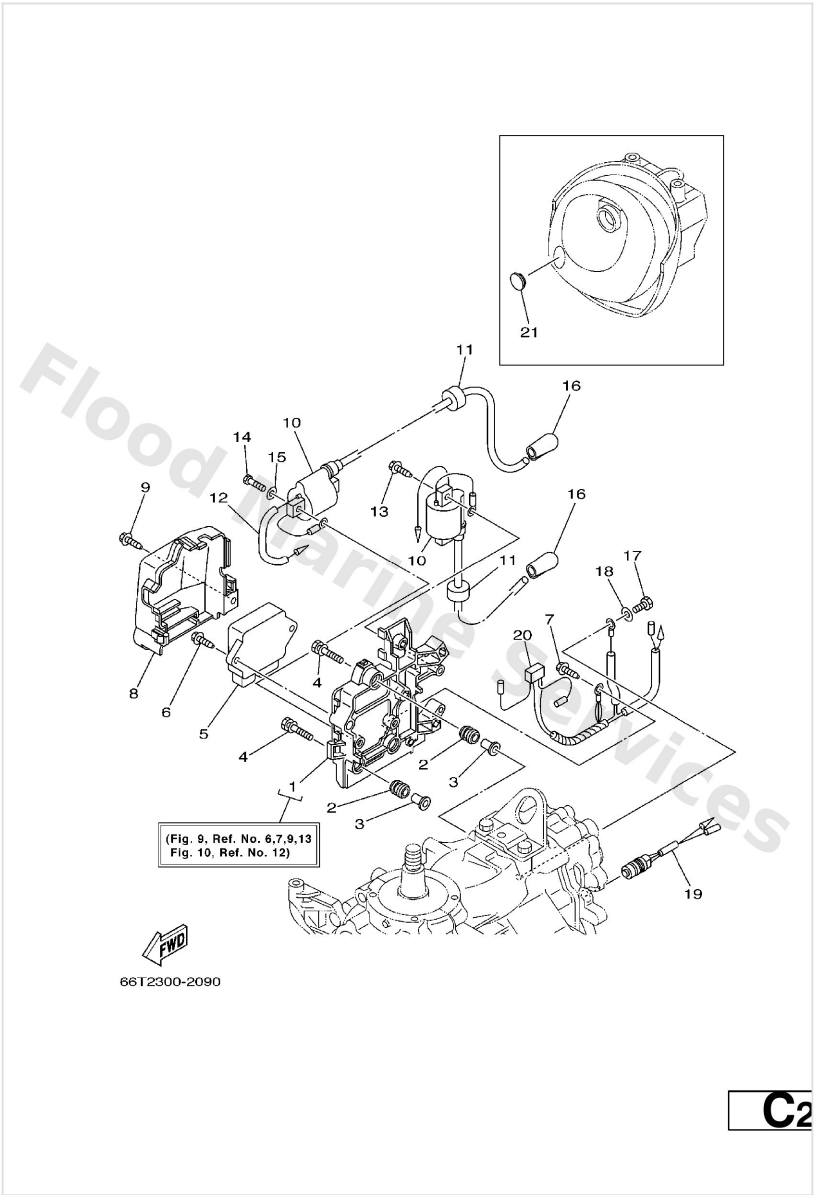
# Electrical 1



**C2**

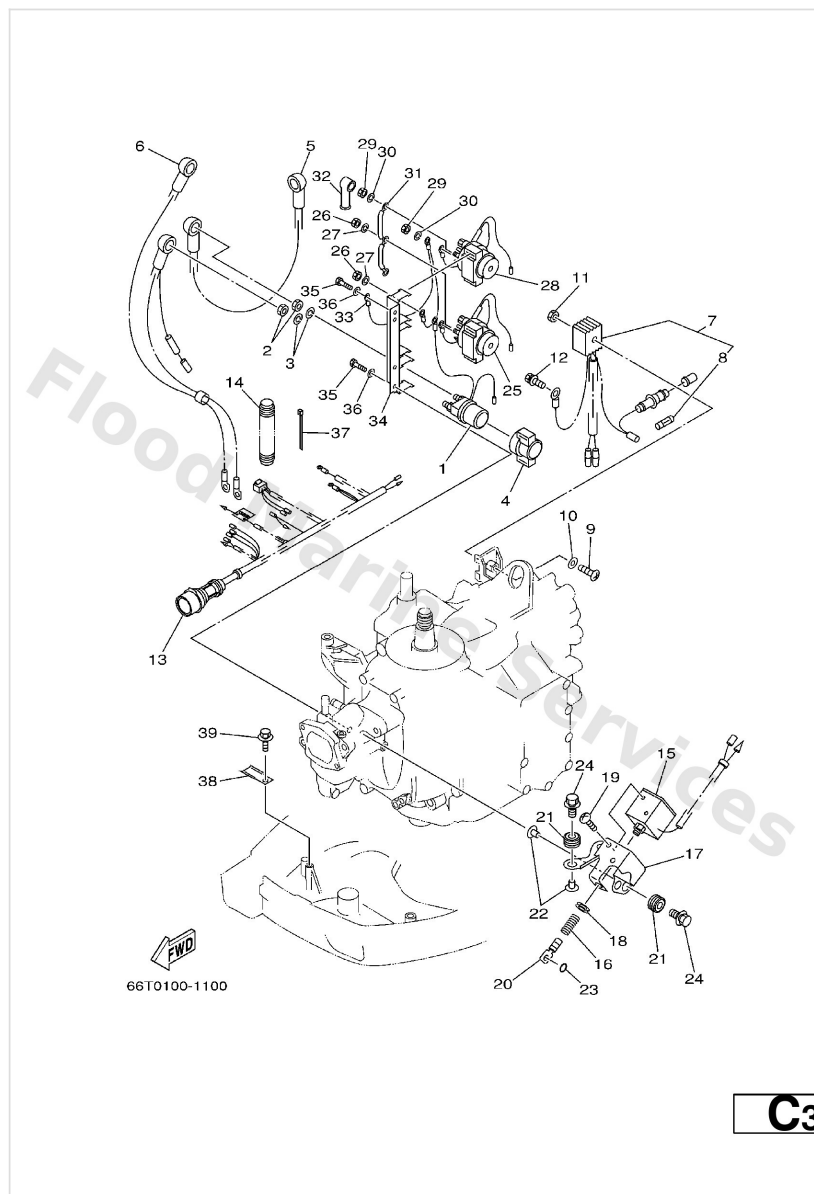
Ref	Part	
1	<a href="#">66T-8554B-01-94</a> Bracket	<a href="#">Buy now</a>
2	<a href="#">6A0-82317-00</a> Damper, ignition coil	<a href="#">Buy now</a>
3	<a href="#">624-42542-00</a> Collar	<a href="#">Buy now</a>
4	<a href="#">90119-06M65</a> Bolt, with washer	<a href="#">Buy now</a>
5	<a href="#">66T-85540-00</a> C.d.i. unit assembly	<a href="#">Buy now</a>
6	<a href="#">90109-06M81</a> Bolt	<a href="#">Buy now</a>
7	<a href="#">90109-06M80</a> Bolt	<a href="#">Buy now</a>
8	<a href="#">66T-81916-01</a> Cover, terminal	<a href="#">Buy now</a>
10	<a href="#">66T-85570-00</a> Ignition coil assembly	<a href="#">Buy now</a>
11	<a href="#">90480-25161</a> Grommet(656)	<a href="#">Buy now</a>
12	<a href="#">90446-03MA3</a> Hose	<a href="#">Buy now</a>
14	<a href="#">97095-06025</a> Bolt	<a href="#">Buy now</a>
15	<a href="#">92995-06600</a> Washer, plain (646)	<a href="#">Buy now</a>
16	<a href="#">6E3-82370-21</a> Plug cap assembly	<a href="#">Buy now</a>
17	<a href="#">97095-06012</a> Bolt(gh1)	<a href="#">Buy now</a>

# Electrical 1



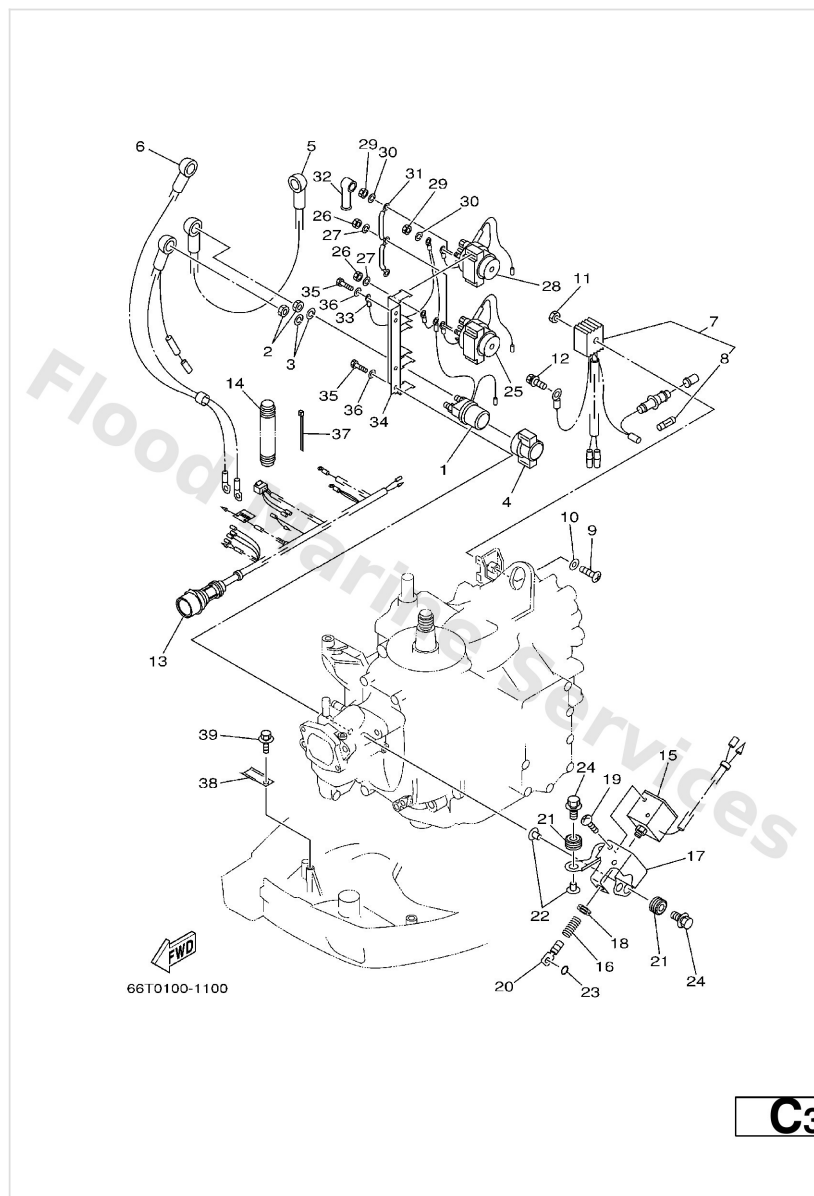
Ref	Part	
19	<a href="#">688-82560-10</a> Thermo switch assembly	<a href="#">Buy now</a>
20	<a href="#">66T-82519-00</a> Wire, earth lead	<a href="#">Buy now</a>
21	<a href="#">6G1-42725-00</a> Grommet	<a href="#">Buy now</a>

## Electrical 2



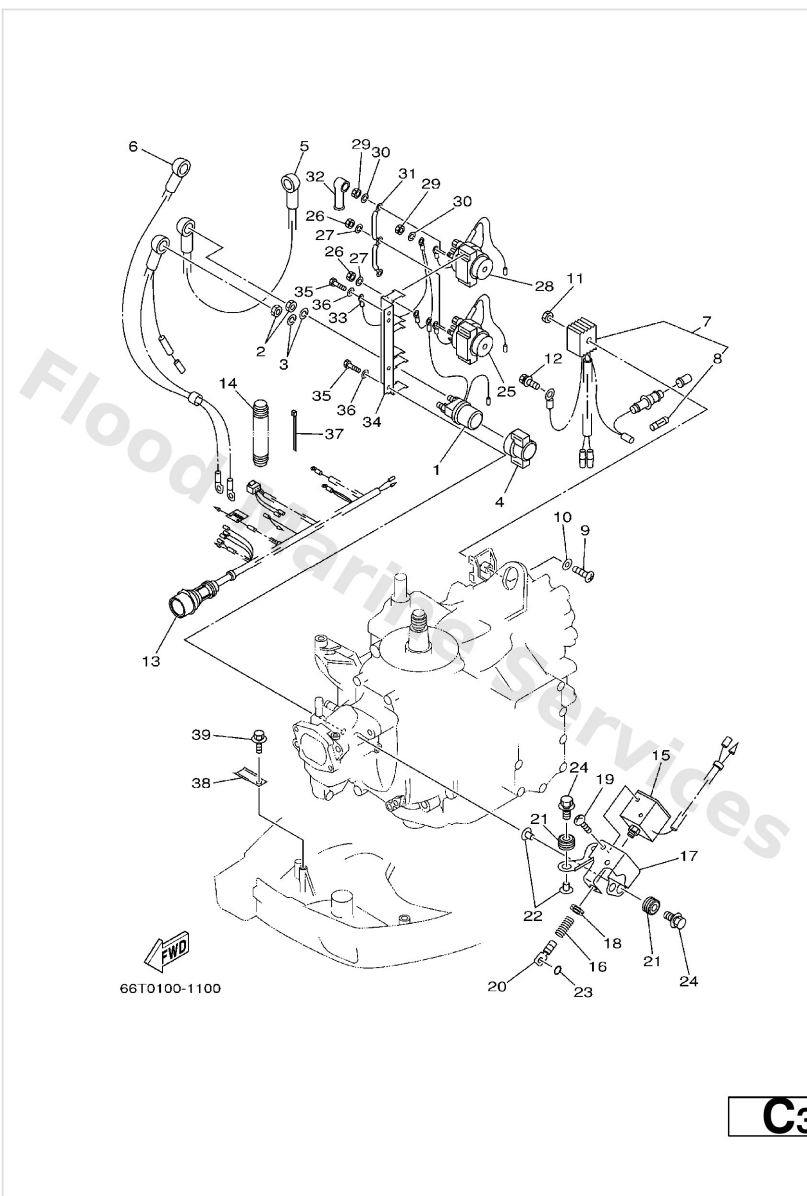
Ref	Part	
1	<a href="#">6G1-8194A-10</a> Starter relay	<a href="#">Buy now</a>
2	<a href="#">90170-06M30</a> Nut(62x)	<a href="#">Buy now</a>
3	<a href="#">90204-06M00</a> Washer, spring(62x)	<a href="#">Buy now</a>
4	<a href="#">6G1-81952-00</a> Holder, relay	<a href="#">Buy now</a>
5	<a href="#">6E5-82117-01</a> Wire, lead	<a href="#">Buy now</a>
6	<a href="#">66T-82105-00</a> Battery cable	<a href="#">Buy now</a>
7	<a href="#">6G1-81970-61</a> Rectifier assembly	<a href="#">Buy now</a>
8	<a href="#">6G1-82151-00</a> Fuse (10a)	<a href="#">Buy now</a>
9	<a href="#">97880-05030</a> Ybs86-530 screw,panhead	<a href="#">Buy now</a>
10	<a href="#">92990-05600</a> Washer, plain (646)	<a href="#">Buy now</a>
11	<a href="#">95380-05600</a> Nut, hexagon (663)	<a href="#">Buy now</a>
12	<a href="#">90109-06M80</a> Bolt	<a href="#">Buy now</a>
13	<a href="#">66T-82590-20</a> Wire harness assembly	<a href="#">Buy now</a>
14	<a href="#">6N7-83557-00</a> Tube I.DIA.) 22MM	<a href="#">Buy now</a>
15	<a href="#">6J4-86111-00</a> Coil, solenoid	<a href="#">Buy now</a>

## Electrical 2



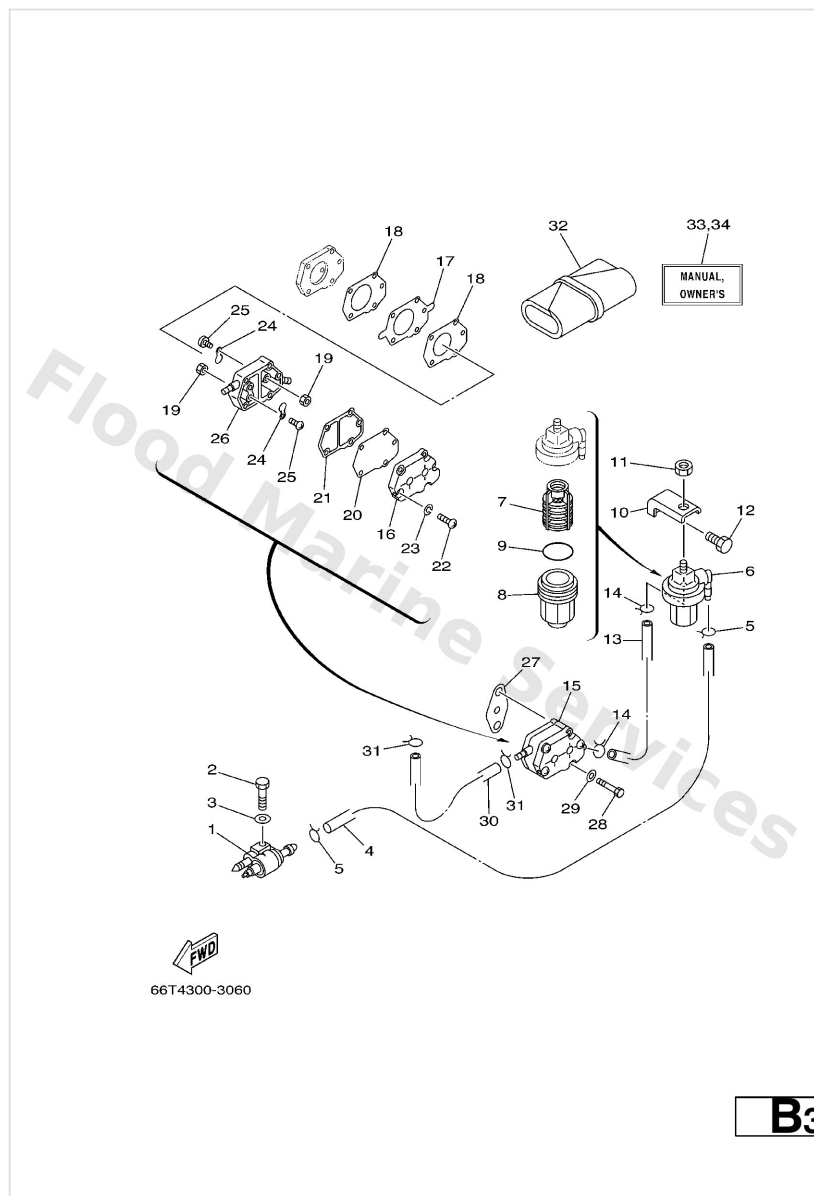
Ref	Part	
16	<a href="#">6J4-86116-00</a> Wire, pull	<a href="#">Buy now</a>
17	<a href="#">66T-86112-00</a> Stay, solenoid	<a href="#">Buy now</a>
18	<a href="#">90480-10155</a> Grommet(664)	<a href="#">Buy now</a>
19	<a href="#">97880-05008</a> Screw, with washer	<a href="#">Buy now</a>
20	<a href="#">682-86117-00</a> Hook, wire pull	<a href="#">Buy now</a>
21	<a href="#">90480-10M23</a> Grommet(6k7)	<a href="#">Buy now</a>
22	<a href="#">90387-06M60</a> Collar (6h3)	<a href="#">Buy now</a>
23	<a href="#">93210-03261</a> O-ring (663)	<a href="#">Buy now</a>
24	<a href="#">90119-06M88</a> Bolt, with washer	<a href="#">Buy now</a>
25	<a href="#">6E5-8195B-01</a> Relay assembly	<a href="#">Buy now</a>
28	<a href="#">6E5-8195C-01</a> Relay assembly	<a href="#">Buy now</a>
31	<a href="#">66T-87149-00</a> Connector	<a href="#">Buy now</a>
32	<a href="#">6G5-82119-00</a> Cover, lead wire	<a href="#">Buy now</a>
33	<a href="#">6E5-82116-00</a> Wire, minus lead	<a href="#">Buy now</a>
34	<a href="#">66T-81948-00</a> Bracket	<a href="#">Buy now</a>

## Electrical 2



Ref	Part	
35	<a href="#">97095-06016</a> Bolt, hexagon deep recess	<a href="#">Buy now</a>
36	<a href="#">92995-06600</a> Washer, plain (646)	<a href="#">Buy now</a>
37	<a href="#">90465-11M10</a> Clamp	<a href="#">Buy now</a>
38	<a href="#">90465-20M31</a> Clamp(6t4)	<a href="#">Buy now</a>
39	<a href="#">90109-06M86</a> Bolt	<a href="#">Buy now</a>

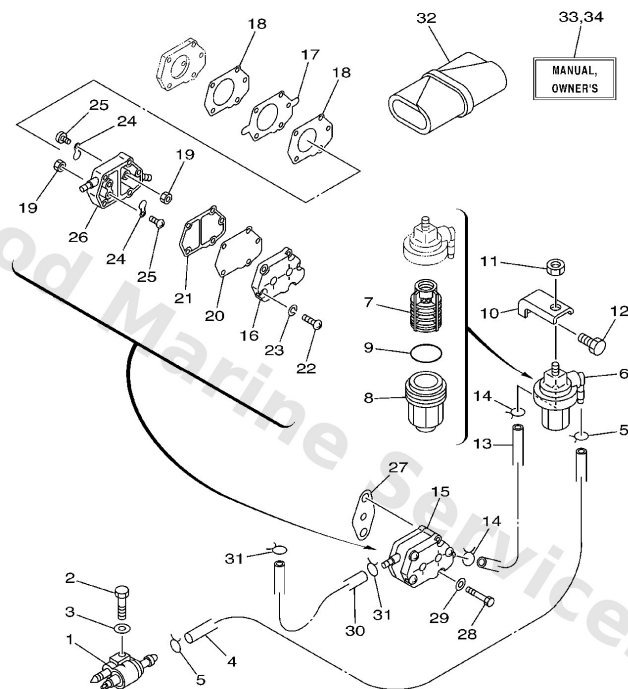
# Fuel



Ref	Part	
1	<a href="#">6G1-24304-02</a> Fuel pipe joint comp. 1	<a href="#">Buy now</a>
2	<a href="#">97095-06030</a> Bolt(jf7)	<a href="#">Buy now</a>
3	<a href="#">92995-06600</a> Washer, plain (646)	<a href="#">Buy now</a>
4	<a href="#">90445-09M08</a> Hose (l865)	<a href="#">Buy now</a>
5	<a href="#">90467-08004</a> Clip, pipe 6162435600	<a href="#">Buy now</a>
6	<a href="#">61N-24560-00</a> Filter assembly	<a href="#">Buy now</a>
7	<a href="#">61N-24563-00</a> Element, filter	<a href="#">Buy now</a>
8	<a href="#">61N-24521-00</a> Cup, filter	<a href="#">Buy now</a>
9	<a href="#">93210-32738</a> O-ring(1wg)	<a href="#">Buy now</a>
10	<a href="#">648-24566-02</a> Bracket, filter	<a href="#">Buy now</a>
11	<a href="#">95380-08600</a> Nut (661)	<a href="#">Buy now</a>
12	<a href="#">97013-06014</a> Bolt(gj3)	<a href="#">Buy now</a>
13	<a href="#">90445-09086</a> Hose (l1500)	<a href="#">Buy now</a>
15	<a href="#">692-24410-00</a> Fuel pump assembly	<a href="#">Buy now</a>
16	<a href="#">6A0-24413-00</a> Cover, pump	<a href="#">Buy now</a>



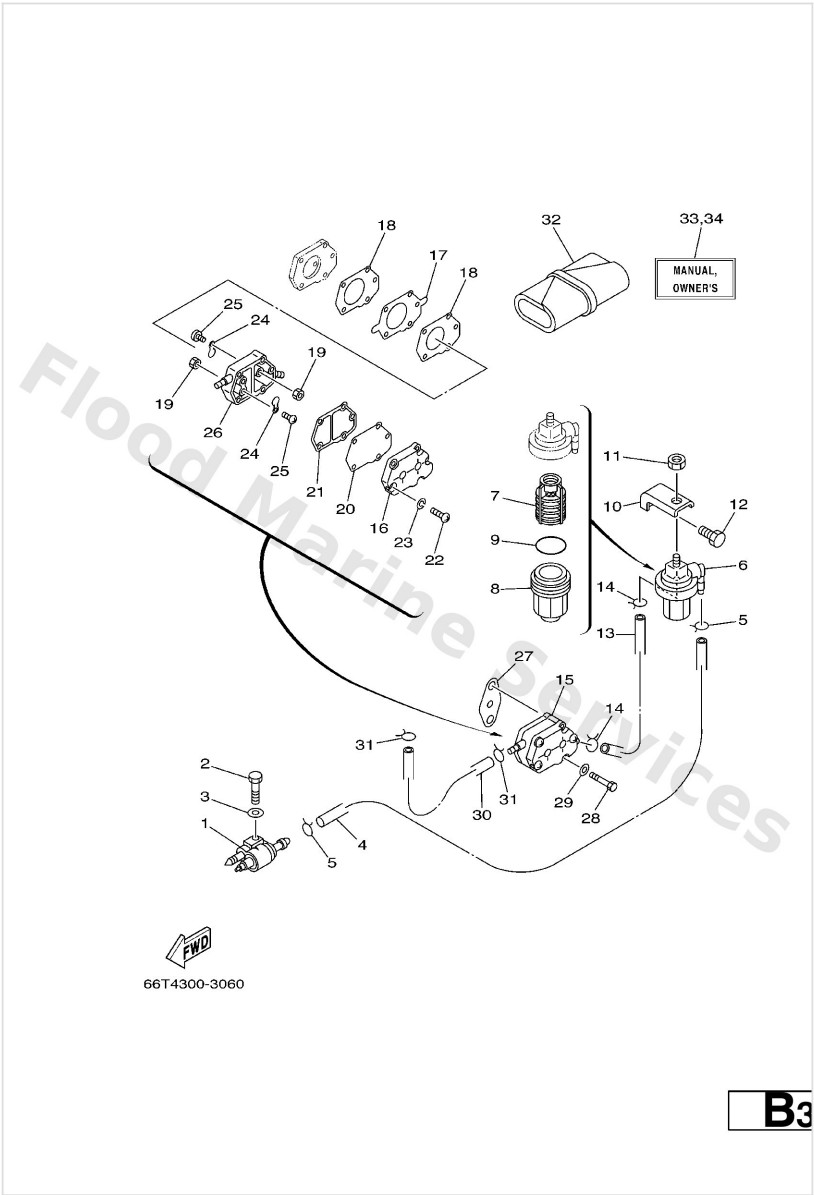
# Fuel



FWD  
66T4300-3060

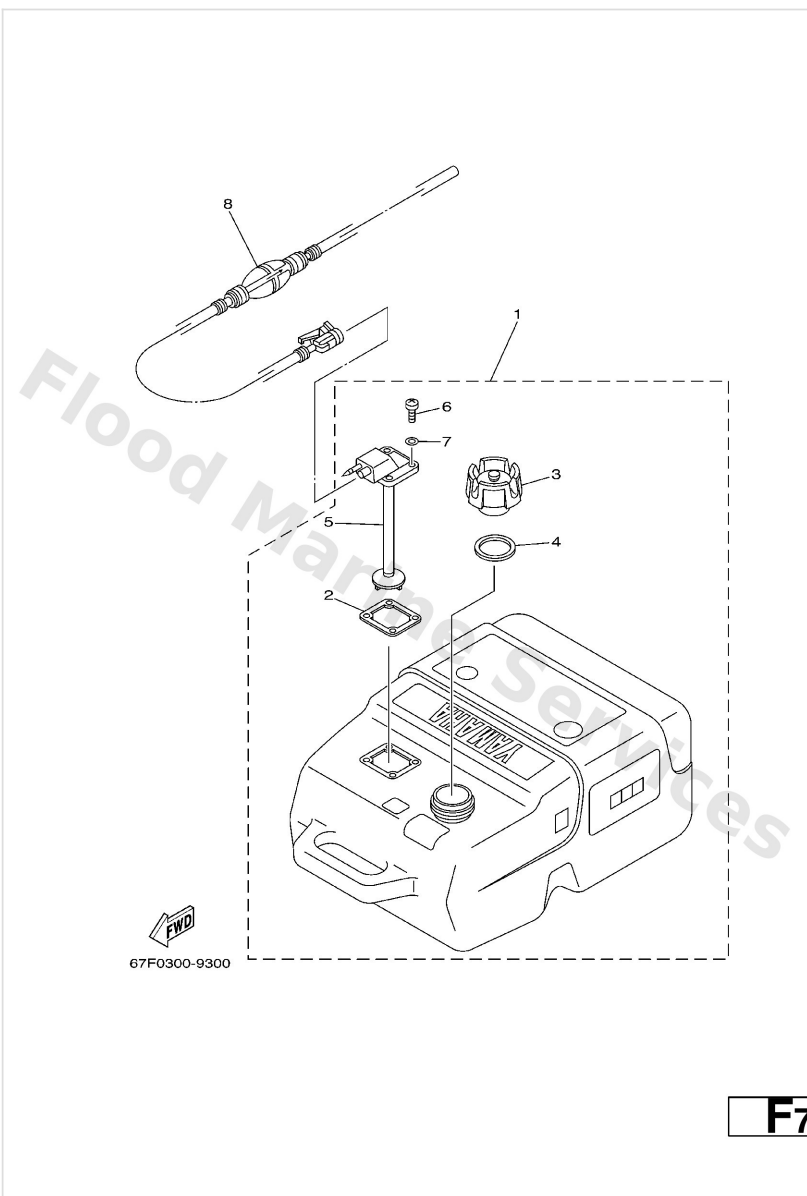
B3

Ref	Part	
17	<a href="#">692-24411-00</a> Diaphragm	<a href="#">Buy now</a>
18	<a href="#">648-24434-01</a> Gasket, body	<a href="#">Buy now</a>
19	<a href="#">95380-03600</a> Nut (6g8)	<a href="#">Buy now</a>
20	<a href="#">663-24411-00</a> Diaphragm	<a href="#">Buy now</a>
21	<a href="#">648-24435-02</a> Gasket, body 2	<a href="#">Buy now</a>
22	<a href="#">98503-05028</a> Ybs86-530 screw,panhead	<a href="#">Buy now</a>
23	<a href="#">92990-05100</a> Ybs67-5 washer, spring	<a href="#">Buy now</a>
24	<a href="#">6A0-24421-01</a> Valve, check	<a href="#">Buy now</a>
25	<a href="#">6A0-14325-00</a> Screw, pan head	<a href="#">Buy now</a>
26	<a href="#">6A0-24412-02</a> Body 1	<a href="#">Buy now</a>
27	<a href="#">650-24431-A0</a> Gasket,fuel pump	<a href="#">Buy now</a>
28	<a href="#">97095-06040</a> Bolt (682)	<a href="#">Buy now</a>
32	<a href="#">676-W2810-01</a> Tool kit	<a href="#">Buy now</a>
33	<a href="#">66T-28199-72-A0</a> O/m e40xmh/40xw/xwt '03 e,f,s UR (E,F,S)	<a href="#">Buy now</a>
33	<a href="#">66T-28199-72-B0</a> O/m e40xmh/40xw/xwt '03 g,d,i UR (D,NL,I)	<a href="#">Buy now</a>



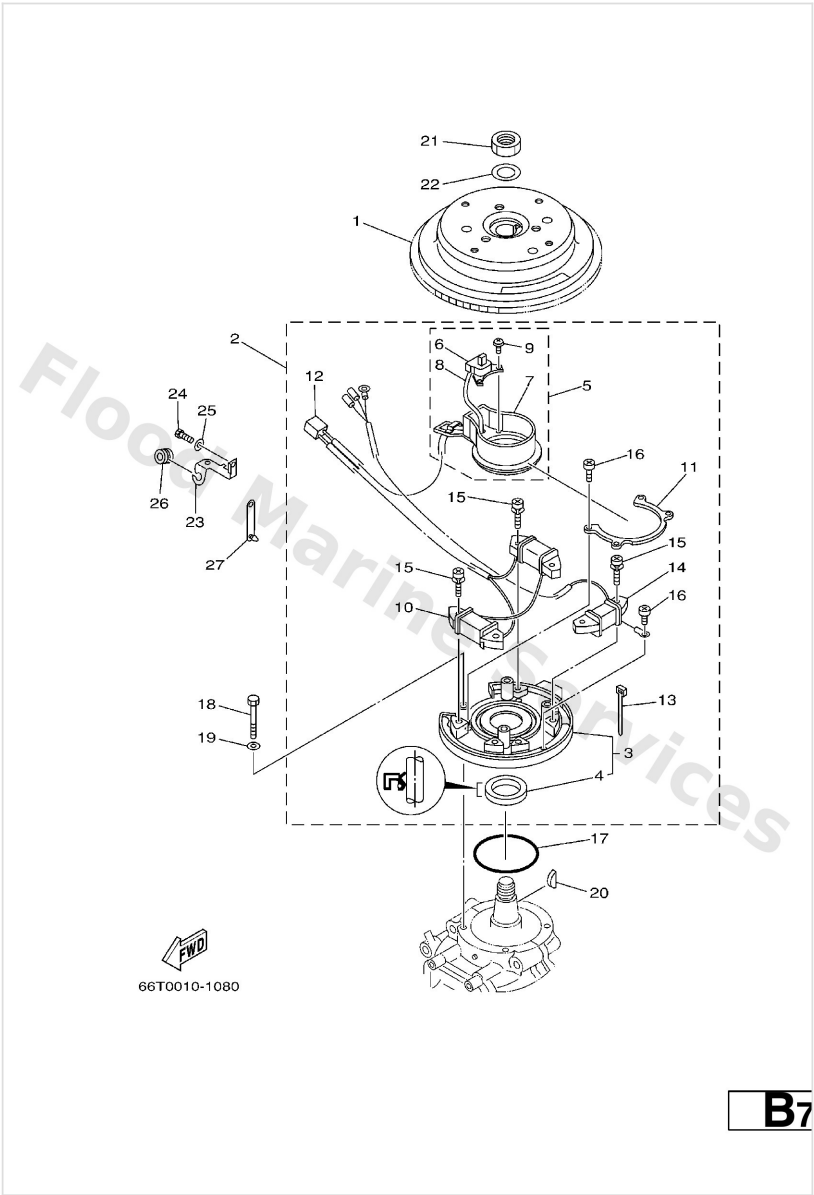
Ref	Part	
34	<a href="#">66T-28199-82-A0</a> O/m 40xwt/e/xmh(66t5/4) '03 UR (DK,P,GR)	<a href="#">Buy now</a>
34	<a href="#">66T-28199-82-B0</a> O/m 40xwt/e/xmh(66t5/4) '03 UR (N,S,SS)	<a href="#">Buy now</a>

# Fuel Tank



Ref	Part	
1	<a href="#">6YK-24201-01</a> Fuel Tank assembly (25L) AP PLASTIC, 25L	<a href="#">Buy now</a>
2	<a href="#">6YL-24268-01</a> Gasket, fuel meter	<a href="#">Buy now</a>
3	<a href="#">6YK-24610-00</a> Cap assembly WITH INDICATOR	<a href="#">Buy now</a>
4	<a href="#">6YL-24641-00</a> Gasket, cap 1	<a href="#">Buy now</a>
5	<a href="#">6YK-24260-01</a> Fuel meter assembly	<a href="#">Buy now</a>
6	<a href="#">90157-05M16</a> Screw, pan head	<a href="#">Buy now</a>
7	<a href="#">6YL-24329-00</a> Seal	<a href="#">Buy now</a>
8	<a href="#">6YL-24306-52</a> Fuel pipe comp. 1 AP	<a href="#">Buy now</a>

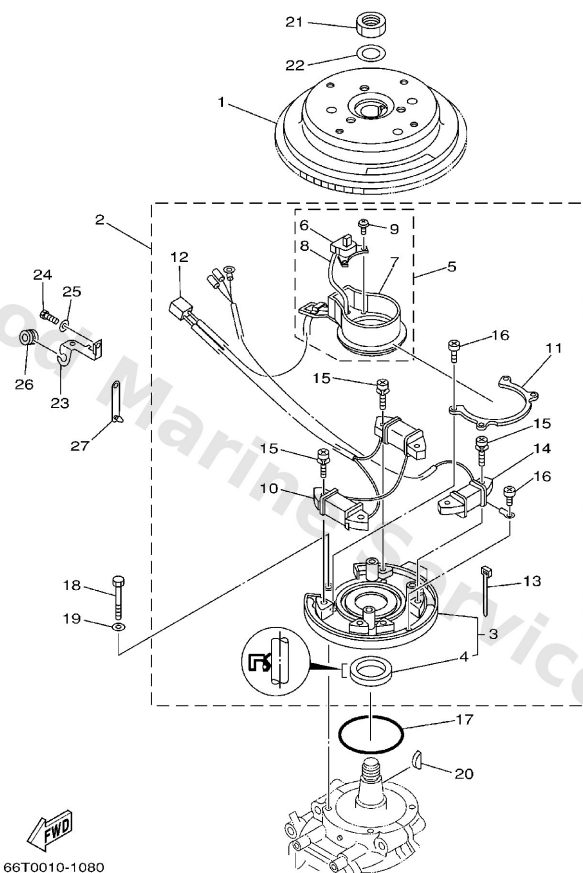
Generator



**B7**

Ref	Part	
1	<a href="#">66T-85550-00</a> Rotor assembly	<a href="#">Buy now</a>
1	<a href="#">66T-85550-10</a> Rotor assembly	<a href="#">Buy now</a>
2	<a href="#">66T-85560-01</a> Base assembly	<a href="#">Buy now</a>
3	<a href="#">66T-85561-00</a> Base, magneto	<a href="#">Buy now</a>
4	<a href="#">93102-35008</a> Oil seal	<a href="#">Buy now</a>
5	<a href="#">66T-85580-00</a> Pulser coil assembly	<a href="#">Buy now</a>
6	<a href="#">66T-85596-00</a> Coil, pulser 1	<a href="#">Buy now</a>
7	<a href="#">66T-85582-00</a> Attachment, pulser	<a href="#">Buy now</a>
8	<a href="#">66T-85515-00</a> Lead wire assembly	<a href="#">Buy now</a>
9	<a href="#">97902-04108</a> Screw, with washer	<a href="#">Buy now</a>
10	<a href="#">66T-85520-00</a> Coil, charge	<a href="#">Buy now</a>
11	<a href="#">66T-41611-00</a> Retainer, magneto base	<a href="#">Buy now</a>
12	<a href="#">9E471-04305</a> Housing, connector (f-4-b)	<a href="#">Buy now</a>
13	<a href="#">66T-81328-00</a> Clamp	<a href="#">Buy now</a>
14	<a href="#">66T-85533-00</a> Coil, lighting	<a href="#">Buy now</a>

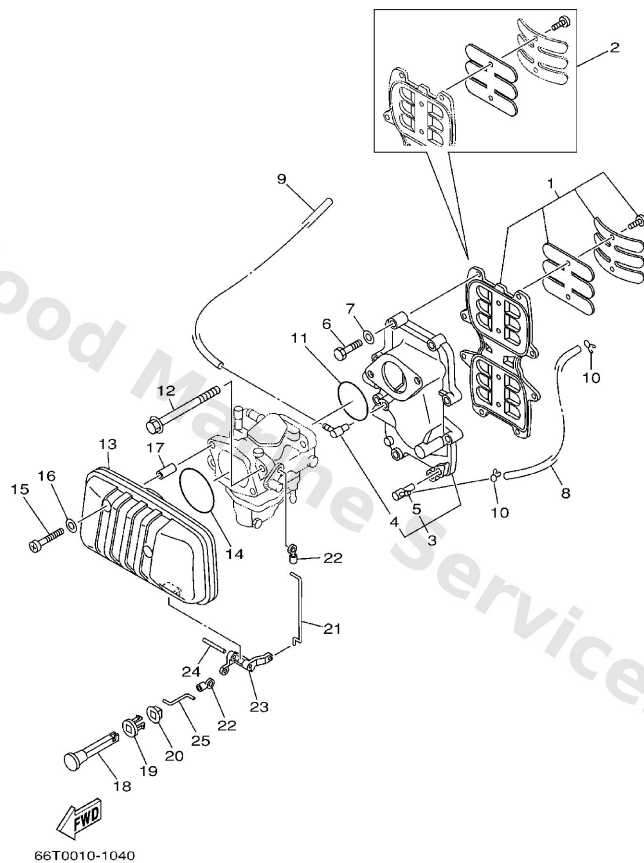
# Generator



**B7**

Ref	Part	
15	<a href="#">97902-06125</a> Screw, pan head (76t)	<a href="#">Buy now</a>
16	<a href="#">97802-04006</a> Screw, pan head(3xp)	<a href="#">Buy now</a>
17	<a href="#">93210-75M51</a> O-ring (6f5)	<a href="#">Buy now</a>
18	<a href="#">97095-06040</a> Bolt (682)	<a href="#">Buy now</a>
19	<a href="#">92995-06600</a> Washer, plain (646)	<a href="#">Buy now</a>
20	<a href="#">90280-05015</a> Key, woodruff	<a href="#">Buy now</a>
21	<a href="#">90170-20137</a> Nut, hexagon(663)	<a href="#">Buy now</a>
22	<a href="#">90201-21M18</a> Washer, plate (663)	<a href="#">Buy now</a>
23	<a href="#">90465-15M74</a> Clamp	<a href="#">Buy now</a>
24	<a href="#">97095-06016</a> Bolt, hexagon deep recess	<a href="#">Buy now</a>
26	<a href="#">90480-10M71</a> Grommet	<a href="#">Buy now</a>
27	<a href="#">90464-12M00</a> Clamp	<a href="#">Buy now</a>

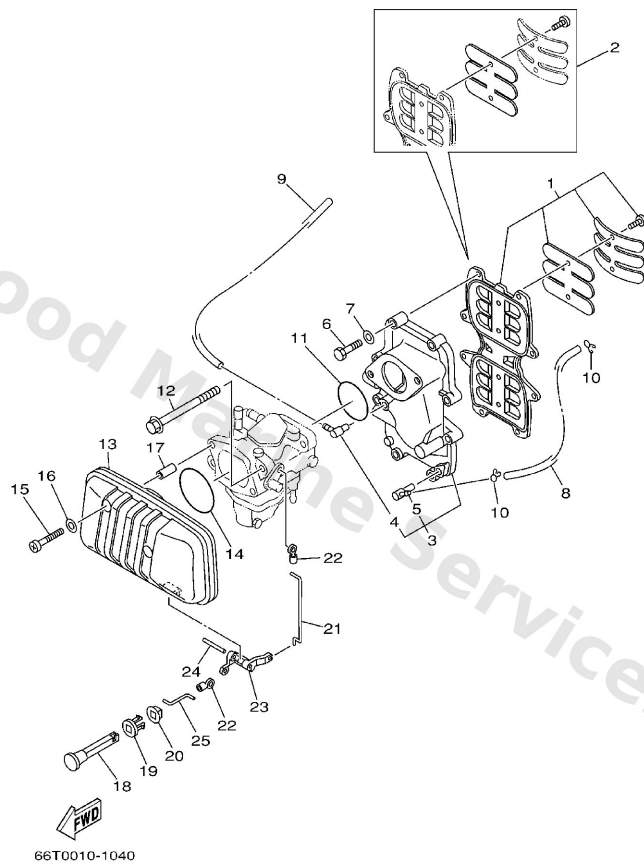
# Intake



**B1**

Ref	Part	
1	<a href="#">66T-13610-00</a> Reed valve assembly	<a href="#">Buy now</a>
2	<a href="#">66T-W0004-00</a> Reed set	<a href="#">Buy now</a>
3	<a href="#">66T-13641-02-1S</a> Manifold 1	<a href="#">Buy now</a>
4	<a href="#">6E5-13552-01</a> Nozzle	<a href="#">Buy now</a>
5	<a href="#">650-11372-01</a> Nipple, hose	<a href="#">Buy now</a>
6	<a href="#">97013-06035</a> Bolt(3rv)	<a href="#">Buy now</a>
7	<a href="#">92903-06600</a> Washer, plain (646)	<a href="#">Buy now</a>
8	<a href="#">90445-07M24</a> Hose (I390)	<a href="#">Buy now</a>
9	<a href="#">90445-07MA4</a> Hose (I390)	<a href="#">Buy now</a>
10	<a href="#">90467-06016</a> Clip (655)	<a href="#">Buy now</a>
11	<a href="#">93210-46M16</a> O-ring (688)	<a href="#">Buy now</a>
12	<a href="#">90119-08M03</a> Bolt (689)	<a href="#">Buy now</a>
13	<a href="#">66T-14440-00</a> Silencer assembly, intake	<a href="#">Buy now</a>
14	<a href="#">93210-54M54</a> O-ring (6g1)	<a href="#">Buy now</a>
15	<a href="#">97885-06040</a> Screw pan head	<a href="#">Buy now</a>

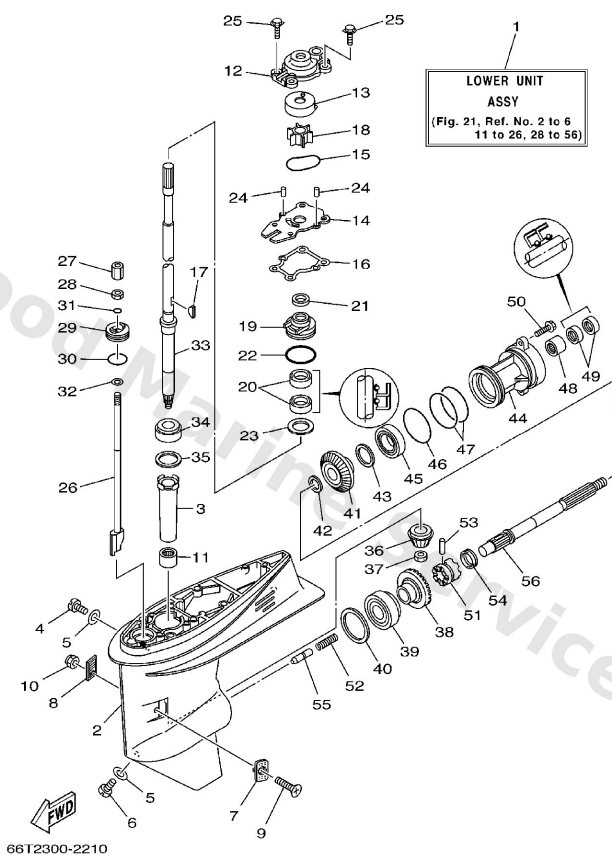
# Intake



**B1**

Ref	Part	
16	<a href="#">92995-06600</a> Washer, plain (646)	<a href="#">Buy now</a>
17	<a href="#">90387-06M80</a> Collar	<a href="#">Buy now</a>
18	<a href="#">6H4-41271-01</a> Knob, choke	<a href="#">Buy now</a>
19	<a href="#">689-41273-00</a> Grommet	<a href="#">Buy now</a>
20	<a href="#">6J8-41274-00</a> Grommet 2	<a href="#">Buy now</a>
21	<a href="#">66T-41256-00</a> Rod, choke 1	<a href="#">Buy now</a>
22	<a href="#">661-41262-02</a> Joint, choke lever	<a href="#">Buy now</a>
23	<a href="#">66T-41252-00</a> Lever, choke 1	<a href="#">Buy now</a>
24	<a href="#">91690-40032</a> Pin, spring (6f5)	<a href="#">Buy now</a>
25	<a href="#">66T-41257-00</a> Rod, choke 2	<a href="#">Buy now</a>

## Lower Casing. Drive 1

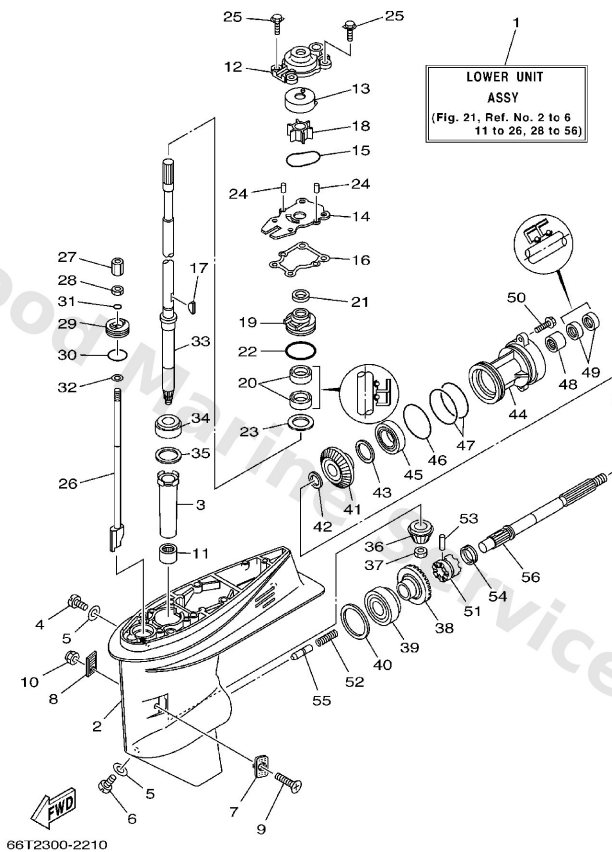


**F2**

Ref	Part	
1	<a href="#">66T-45300-11-4D</a> Lower unit assembly L	<a href="#">Buy now</a>
2	<a href="#">66T-45311-01-4D</a> Casing, lower	<a href="#">Buy now</a>
3	<a href="#">6H4-45536-00</a> Sleeve, drive shaft	<a href="#">Buy now</a>
4	<a href="#">90340-08002</a> Plug, straight screw	<a href="#">Buy now</a>
5	<a href="#">90430-08020</a> Gasket	<a href="#">Buy now</a>
6	<a href="#">688-45341-10</a> Plug, drain	<a href="#">Buy now</a>
7	<a href="#">63D-45214-00</a> Cover, water inlet	<a href="#">Buy now</a>
8	<a href="#">63D-45215-00</a> Cover, water inlet	<a href="#">Buy now</a>
9	<a href="#">90142-05M06</a> Screw, countersunk	<a href="#">Buy now</a>
10	<a href="#">95380-05600</a> Nut, hexagon (663)	<a href="#">Buy now</a>
11	<a href="#">93315-32224</a> Brg,cyl-cal roller 42.2g nk	<a href="#">Buy now</a>
12	<a href="#">66T-44311-00</a> Housing, water pump	<a href="#">Buy now</a>
13	<a href="#">63D-44322-00</a> Insert, cartridge	<a href="#">Buy now</a>
14	<a href="#">66T-44323-00</a> Outer plate, cartridge	<a href="#">Buy now</a>
15	<a href="#">93210-59MG7</a> O-ring	<a href="#">Buy now</a>



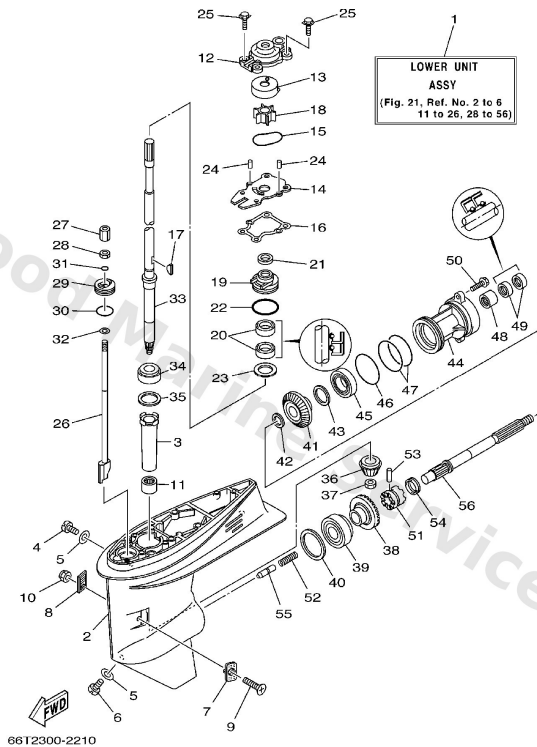
## Lower Casing. Drive 1



**F2**

Ref	Part	
16	<a href="#">63D-44316-00</a> Gasket, water pump	<a href="#">Buy now</a>
17	<a href="#">90280-03M03</a> Key, woodruff (697)	<a href="#">Buy now</a>
18	<a href="#">6H4-44352-02</a> Impeller	<a href="#">Buy now</a>
19	<a href="#">63D-44341-00</a> Housing, water pump set	<a href="#">Buy now</a>
20	<a href="#">93101-22M60</a> Oil seal	<a href="#">Buy now</a>
21	<a href="#">66T-45344-01</a> Cover, oil seal	<a href="#">Buy now</a>
22	<a href="#">93210-48MG8</a> O-ring	<a href="#">Buy now</a>
23	<a href="#">90201-27M00</a> Washer, plate(62x)	<a href="#">Buy now</a>
24	<a href="#">93604-08062</a> Pin,dowel (626)	<a href="#">Buy now</a>
25	<a href="#">90119-08M15</a> Bolt, with washer(62w)	<a href="#">Buy now</a>
26	<a href="#">66T-44150-11</a> Shift cam assembly L	<a href="#">Buy now</a>
27	<a href="#">61N-44146-00</a> Connector, shift rod	<a href="#">Buy now</a>
28	<a href="#">95380-06700</a> Nut	<a href="#">Buy now</a>
29	<a href="#">66T-45321-00</a> Plate	<a href="#">Buy now</a>
30	<a href="#">93210-33MG4</a> O-ring	<a href="#">Buy now</a>

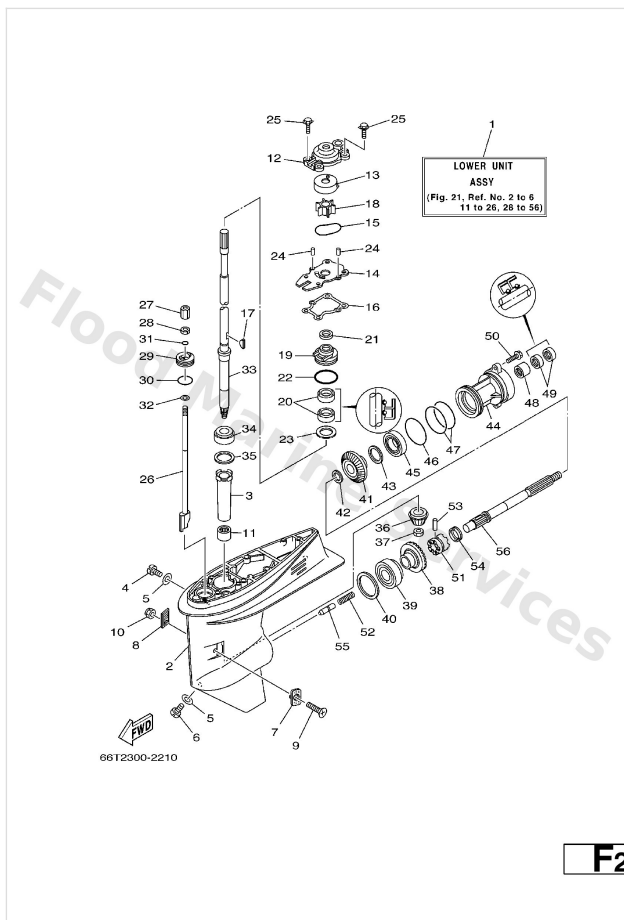
# Lower Casing. Drive 1



**F2**

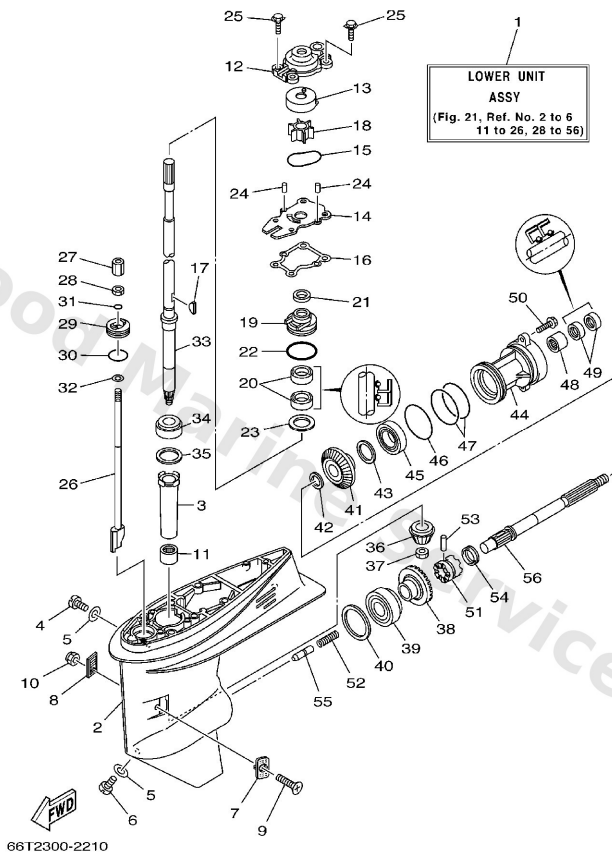
Ref	Part	
31	<a href="#">93210-06ME6</a> O-ring	<a href="#">Buy now</a>
32	<a href="#">92990-06600</a> Washer, plain (646)	<a href="#">Buy now</a>
33	<a href="#">66T-45501-11</a> Drive shaft comp. L	<a href="#">Buy now</a>
34	<a href="#">93332-00001</a> Brg, tapered roller (409)	<a href="#">Buy now</a>
35	<a href="#">663-45587-01-10</a> Shim (t:0.10mm) UR	<a href="#">Buy now</a>
35	<a href="#">663-45587-01-12</a> Shim (t:0.12mm) UR	<a href="#">Buy now</a>
35	<a href="#">663-45587-01-15</a> Shim (t:0.15mm) UR	<a href="#">Buy now</a>
35	<a href="#">663-45587-01-18</a> Shim (t:0.18mm) UR	<a href="#">Buy now</a>
35	<a href="#">663-45587-01-30</a> Shim (t:0,30mm) UR	<a href="#">Buy now</a>
35	<a href="#">663-45587-01-40</a> Shim (t:0.40mm) UR	<a href="#">Buy now</a>
35	<a href="#">663-45587-01-50</a> Shim (t:0.50mm) UR	<a href="#">Buy now</a>
36	<a href="#">66T-45551-00</a> Pinion	<a href="#">Buy now</a>
37	<a href="#">90170-12138</a> Nut hexagon(663)	<a href="#">Buy now</a>
38	<a href="#">66T-45560-01</a> Gear	<a href="#">Buy now</a>
39	<a href="#">93332-00003</a> Brg,cyl-cal roller 318g ky	<a href="#">Buy now</a>

## Lower Casing. Drive 1



Ref	Part	
40	<a href="#">663-45567-01-10</a> Shim (t:0.10mm) UR	<a href="#">Buy now</a>
40	<a href="#">663-45567-01-12</a> Shim (t:0.12mm) UR	<a href="#">Buy now</a>
40	<a href="#">663-45567-01-15</a> Shim (t:0.15mm) UR	<a href="#">Buy now</a>
40	<a href="#">663-45567-01-18</a> Shim (t:0.18mm) UR	<a href="#">Buy now</a>
40	<a href="#">663-45567-01-30</a> Shim (t:0.30mm) UR	<a href="#">Buy now</a>
40	<a href="#">663-45567-01-40</a> Shim (t:0.40mm) UR	<a href="#">Buy now</a>
40	<a href="#">663-45567-01-50</a> Shim (t:0.50mm) UR	<a href="#">Buy now</a>
41	<a href="#">66T-45571-00</a> Gear	<a href="#">Buy now</a>
42	<a href="#">90201-22429</a> Washer, plate(663)	<a href="#">Buy now</a>
43	<a href="#">63D-45577-00-10</a> Shim (t:0.10mm) UR	<a href="#">Buy now</a>
43	<a href="#">63D-45577-00-12</a> Shim (t:0.12mm) UR	<a href="#">Buy now</a>
43	<a href="#">63D-45577-00-15</a> Shim (t:0.15mm) UR	<a href="#">Buy now</a>
43	<a href="#">63D-45577-00-18</a> Shim (t:0.18mm) UR	<a href="#">Buy now</a>
43	<a href="#">63D-45577-00-30</a> Shim (t:0.30mm) UR	<a href="#">Buy now</a>
43	<a href="#">63D-45577-00-40</a> Shim (t:0.40mm) UR	<a href="#">Buy now</a>

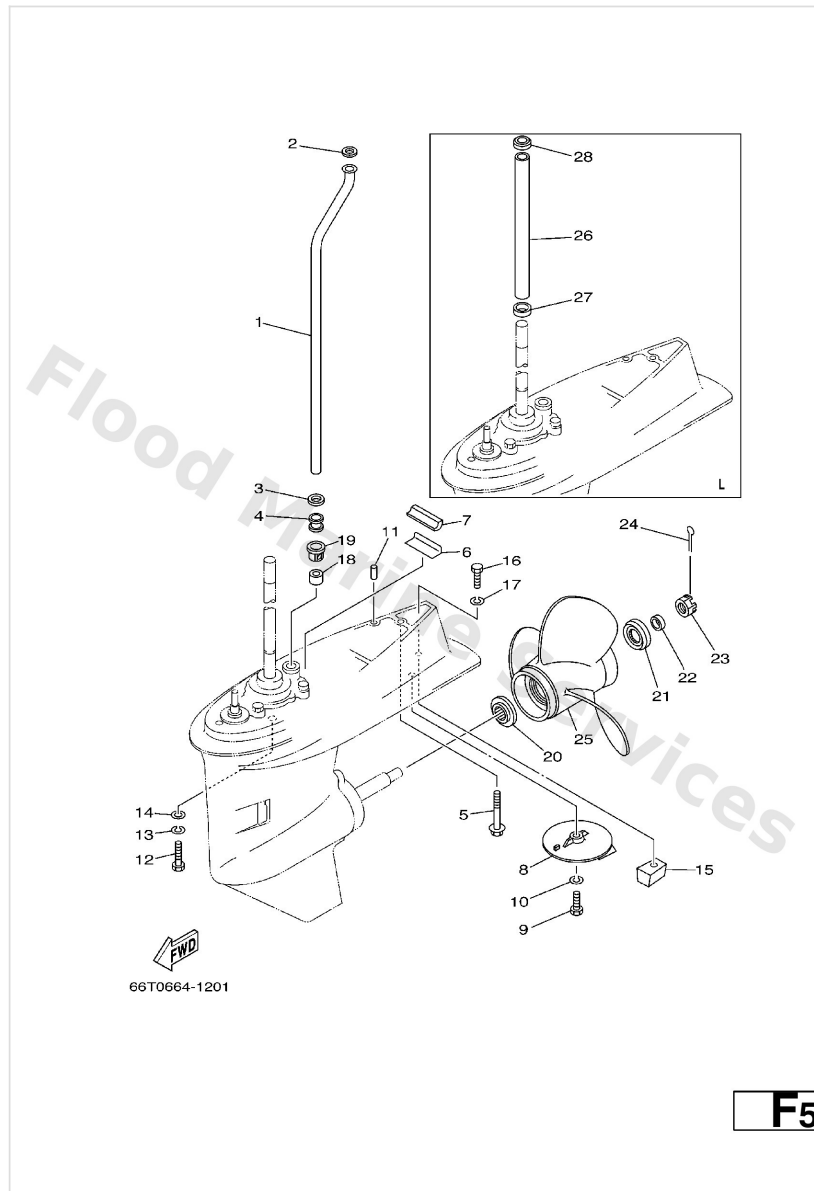
## Lower Casing. Drive 1



**F2**

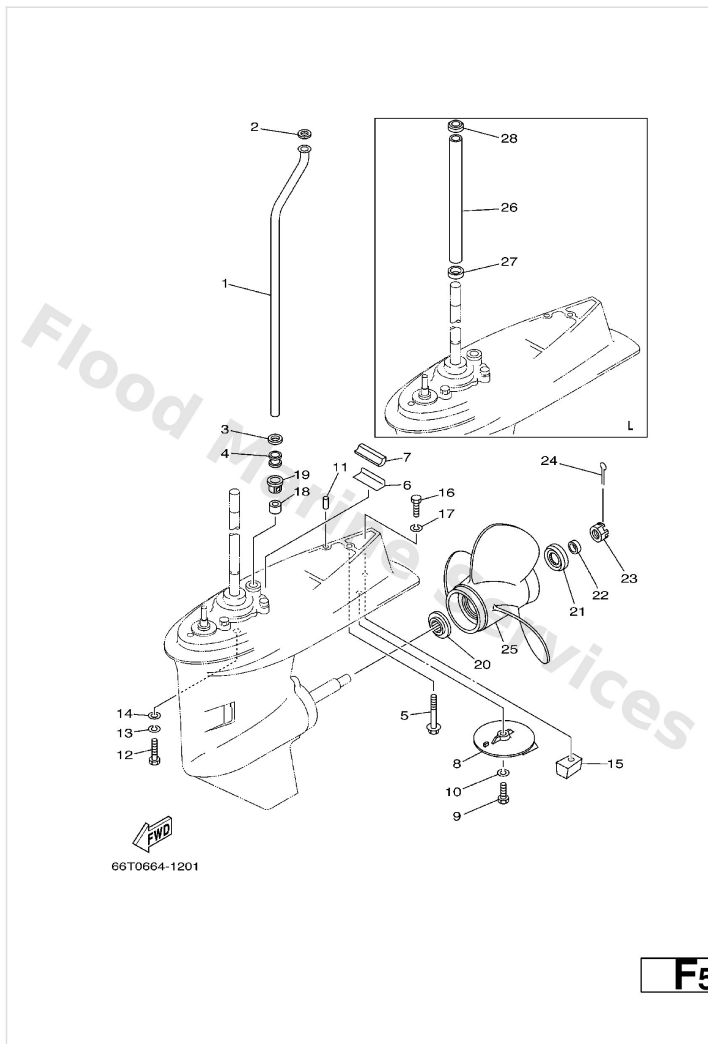
Ref	Part	
43	<a href="#">63D-45577-00-50</a> Shim (t:0.50mm) UR	<a href="#">Buy now</a>
44	<a href="#">63D-45361-02-4D</a> Cap, lower casing	<a href="#">Buy now</a>
45	<a href="#">93306-001U1</a> Bearing(62x)	<a href="#">Buy now</a>
46	<a href="#">93210-69MG6</a> O-ring	<a href="#">Buy now</a>
47	<a href="#">93210-74MG5</a> O-ring (xea)	<a href="#">Buy now</a>
48	<a href="#">93317-22204</a> Brg,cyl-cal roller 25.5g nt	<a href="#">Buy now</a>
49	<a href="#">93101-22M00</a> Oil seal (22x36x6-663)	<a href="#">Buy now</a>
50	<a href="#">90105-08M61</a> Bolt, washer based(62x)	<a href="#">Buy now</a>
51	<a href="#">66T-45631-00</a> Clutch, dog	<a href="#">Buy now</a>
52	<a href="#">90501-15M01</a> Spring, compression	<a href="#">Buy now</a>
53	<a href="#">90250-06023</a> Pin, strait (663)	<a href="#">Buy now</a>
54	<a href="#">663-45633-00</a> Ring, cross pin	<a href="#">Buy now</a>
55	<a href="#">66T-45635-00</a> Plunger, shift	<a href="#">Buy now</a>
56	<a href="#">66T-45611-00</a> Shaft, propeller	<a href="#">Buy now</a>

## Lower Casing. Drive 2



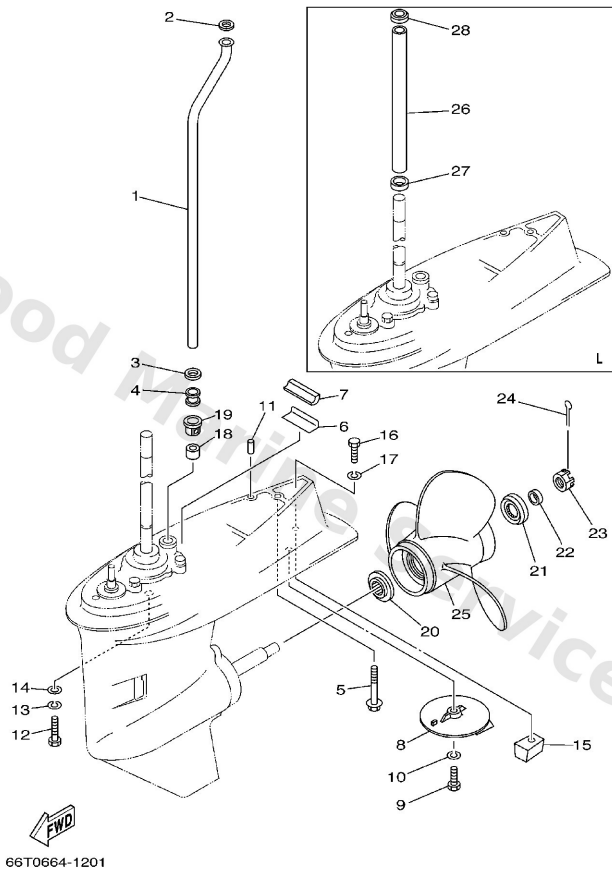
Ref	Part	
1	<a href="#">66T-44361-10</a> Tube, water L	<a href="#">Buy now</a>
2	<a href="#">90202-12060</a> Washer, plate(663)	<a href="#">Buy now</a>
3	<a href="#">90430-12072</a> Gasket	<a href="#">Buy now</a>
4	<a href="#">663-44367-00</a> Damper, water seal 3	<a href="#">Buy now</a>
5	<a href="#">90119-08M44</a> Bolt, with washer	<a href="#">Buy now</a>
7	<a href="#">63D-45375-00</a> Damper, seal	<a href="#">Buy now</a>
8	<a href="#">664-45371-01</a> Tab-trim	<a href="#">Buy now</a>
9	<a href="#">97095-08025</a> Bolt (62g)	<a href="#">Buy now</a>
10	<a href="#">92995-08100</a> Ybs67-8 washer, spring	<a href="#">Buy now</a>
11	<a href="#">93606-12019</a> Pin, dowel (614)	<a href="#">Buy now</a>
12	<a href="#">97075-10040</a> Bolt, hexagon deep recess	<a href="#">Buy now</a>
13	<a href="#">92995-10100</a> Ybs67-10 washer, spring	<a href="#">Buy now</a>
14	<a href="#">92995-10600</a> Washer, plate	<a href="#">Buy now</a>
15	<a href="#">67C-45251-00</a> Anode	<a href="#">Buy now</a>
16	<a href="#">97095-08035</a> Bolt(70w)	<a href="#">Buy now</a>

## Lower Casing. Drive 2



Ref	Part	
18	<a href="#">663-44366-00</a> Damper, water seal 2	<a href="#">Buy now</a>
19	<a href="#">63D-44312-00</a> Cover, water pump housing	<a href="#">Buy now</a>
20	<a href="#">663-45987-02</a> Spacer	<a href="#">Buy now</a>
21	<a href="#">66T-45997-00</a> Spacer 2	<a href="#">Buy now</a>
22	<a href="#">90389-22M01</a> Bush	<a href="#">Buy now</a>
23	<a href="#">90171-16011</a> Nut, castle (663)	<a href="#">Buy now</a>
24	<a href="#">91490-30025</a> Pin cotter	<a href="#">Buy now</a>
25	<a href="#">63D-45941-00-EL</a> Propeller (3x12-1/4 x8 -g) UR	<a href="#">Buy now</a>
25	<a href="#">663-45930-00-98</a> Propeller (3x10-1/4"x14"-g) UR	<a href="#">Buy now</a>
25	<a href="#">663-45941-01-EL</a> Propeller (3x10-3/4"x17"-g) UR	<a href="#">Buy now</a>
25	<a href="#">663-45949-01-EL</a> Propeller (3x10-3/4"x16"-g) UR	<a href="#">Buy now</a>
25	<a href="#">663-45952-02-EL</a> Propeller (3x11-3/8x12-g) UR	<a href="#">Buy now</a>
25	<a href="#">663-45954-01-EL</a> Propeller (3x11-3/4"x10"-g) UR	<a href="#">Buy now</a>
25	<a href="#">663-45956-01-EL</a> Propeller (3x12-1/4"x9"-g) UR	<a href="#">Buy now</a>
25	<a href="#">663-45958-01-EL</a> Propeller (3x11-1/4"x14"-g) UR	<a href="#">Buy now</a>

## Lower Casing. Drive 2

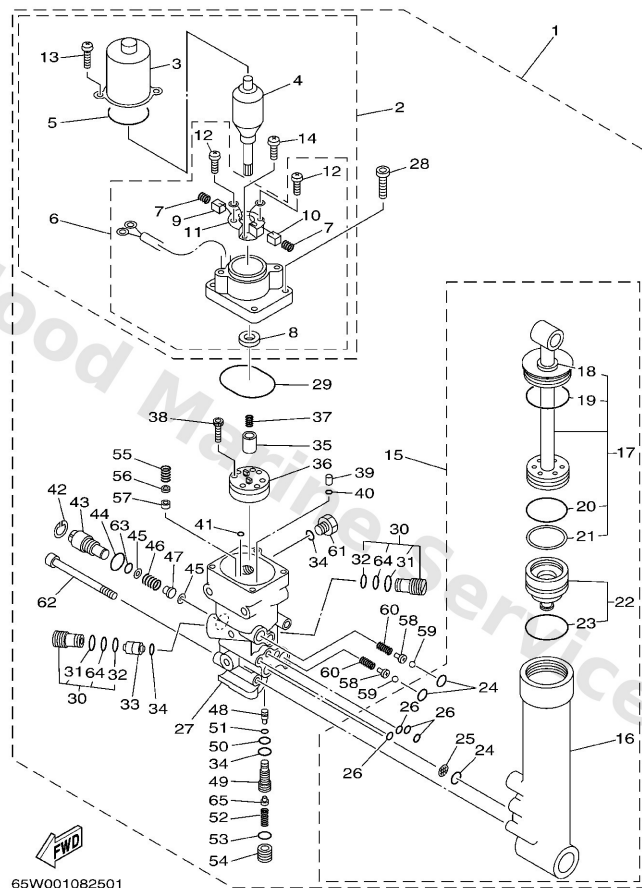


**F5**

Ref	Part	
25	<a href="#">663-45970-60-98</a> Propeller (3x11-3/4"x12"-g) UR	<a href="#">Buy now</a>
25	<a href="#">663-45972-60-98</a> Propeller (3x12"x11"-g) UR	<a href="#">Buy now</a>
25	<a href="#">663-45974-60-98</a> Propeller (3x11-1/2"x13"-g) UR	<a href="#">Buy now</a>
25	<a href="#">663-45976-00-98</a> Propeller (3x10-1/4"x15"-g) UR	<a href="#">Buy now</a>
25	<a href="#">663-45978-00-98</a> Propeller (3x10-1/4"x16"-g) UR	<a href="#">Buy now</a>
26	<a href="#">66T-44362-10</a> Tube, water 2 L	<a href="#">Buy now</a>
27	<a href="#">90480-25M70</a> Grommet L	<a href="#">Buy now</a>
28	<a href="#">90480-30M71</a> Grommet L	<a href="#">Buy now</a>



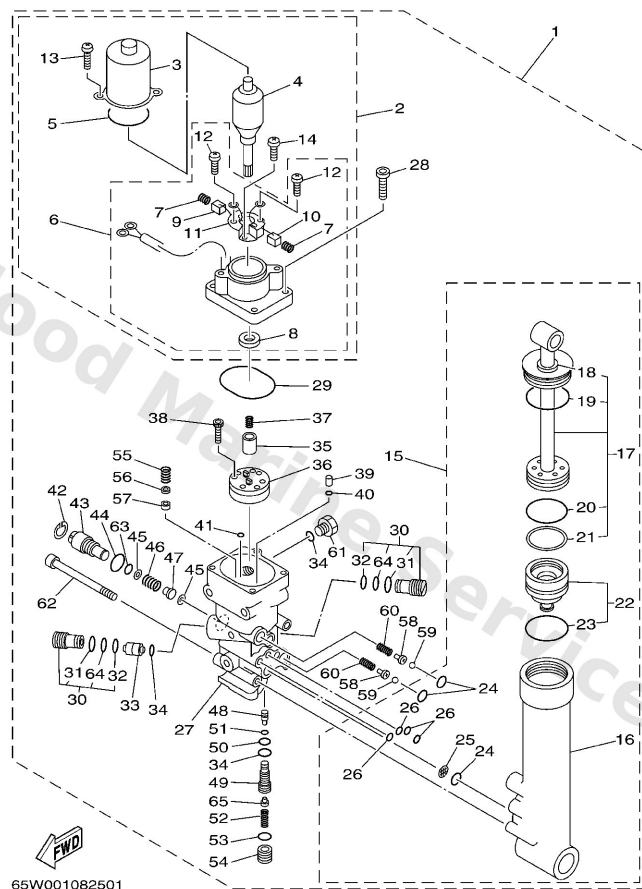
## Power Trim & Tilt Assy



**E5**

Ref	Part	
2	<a href="#">65W-43880-00</a> Motor assembly (hitachi)	<a href="#">Buy now</a>
3	<a href="#">65W-43804-00</a> Stator assembly	<a href="#">Buy now</a>
4	<a href="#">65W-43805-00</a> Armature assembly	<a href="#">Buy now</a>
5	<a href="#">65W-43869-00</a> O-ring	<a href="#">Buy now</a>
6	<a href="#">65W-43881-00</a> Frame, End	<a href="#">Buy now</a>
7	<a href="#">65W-4386K-00</a> Spring, brush	<a href="#">Buy now</a>
8	<a href="#">65W-43882-00</a> Oil seal	<a href="#">Buy now</a>
9	<a href="#">65W-43892-00</a> Brush 2	<a href="#">Buy now</a>
10	<a href="#">65W-43891-00</a> Brush 1	<a href="#">Buy now</a>
11	<a href="#">65W-4380F-00</a> Plate, brush holder	<a href="#">Buy now</a>
12	<a href="#">65W-43879-00</a> Screw, with washer	<a href="#">Buy now</a>
13	<a href="#">65W-43887-00</a> Bolt, screw	<a href="#">Buy now</a>
14	<a href="#">65W-4388E-00</a> Bolt	<a href="#">Buy now</a>
15	<a href="#">65W-43840-00</a> Power tilt assembly	<a href="#">Buy now</a>
16	<a href="#">65W-4380K-00</a> Cylinder, tilt sub assembly	<a href="#">Buy now</a>

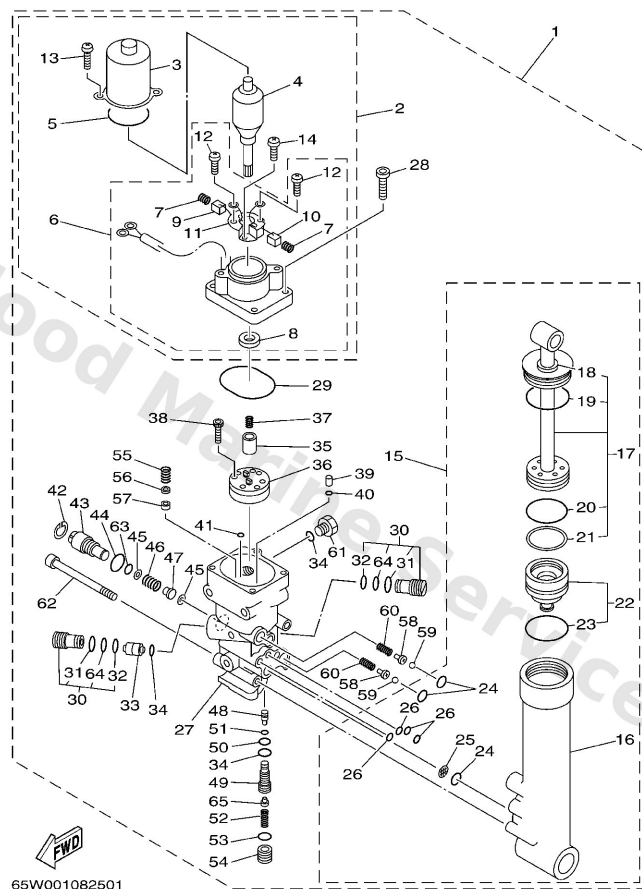
# Power Trim & Tilt Assy



**E5**

Ref	Part	
17	<a href="#">65W-43810-00</a> Tilt piston sub assembly	<a href="#">Buy now</a>
18	<a href="#">65W-43812-00</a> Seal, dust	<a href="#">Buy now</a>
19	<a href="#">65W-43865-00</a> O-ring	<a href="#">Buy now</a>
20	<a href="#">6H1-43861-10</a> O-ring	<a href="#">Buy now</a>
21	<a href="#">65W-43871-00</a> Ring, back up	<a href="#">Buy now</a>
22	<a href="#">65W-43818-00</a> Free piston sub assembly	<a href="#">Buy now</a>
24	<a href="#">93210-11368</a> O-ring (2h7)	<a href="#">Buy now</a>
25	<a href="#">6H1-43816-00</a> Filter 1	<a href="#">Buy now</a>
26	<a href="#">93210-064A5</a> O-ring(61a)	<a href="#">Buy now</a>
27	<a href="#">65W-4380L-00</a> Housing, trim & tilt sub assembly	<a href="#">Buy now</a>
28	<a href="#">65W-43888-00</a> Bolt, hexagon socket head(1jk)	<a href="#">Buy now</a>
29	<a href="#">93210-50768</a> O-ring	<a href="#">Buy now</a>
30	<a href="#">6T4-43802-03</a> Valve sub assembly	<a href="#">Buy now</a>
31	<a href="#">6H1-43866-00</a> O-ring	<a href="#">Buy now</a>
32	<a href="#">6H1-43867-00</a> O-ring	<a href="#">Buy now</a>

# Power Trim & Tilt Assy

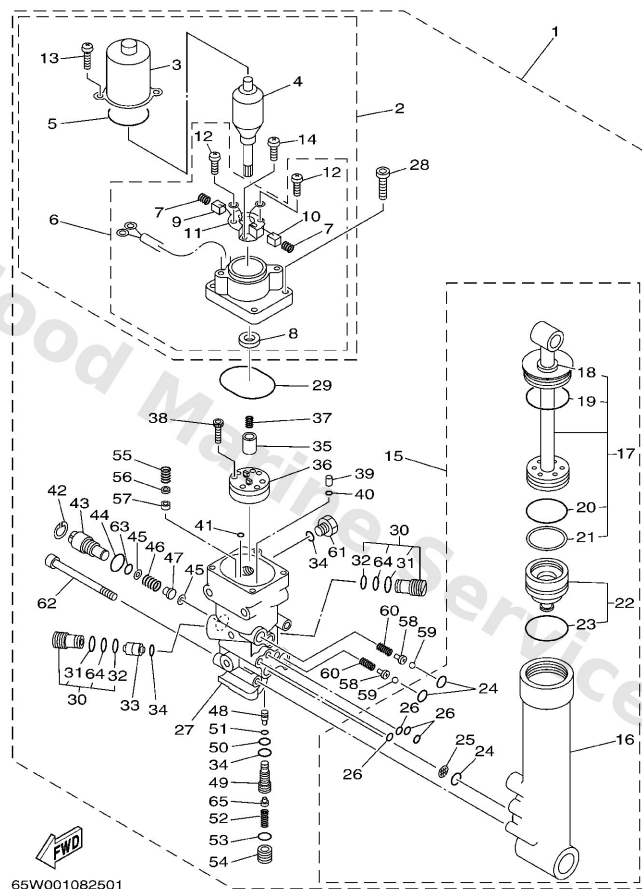


65W001082501

E5

Ref	Part	
33	<a href="#">62X-43841-00</a> Piston, shuttle	<a href="#">Buy now</a>
34	<a href="#">93210-09165</a> O-ring	<a href="#">Buy now</a>
35	<a href="#">65W-43831-00</a> Connector, shaft	<a href="#">Buy now</a>
36	<a href="#">65W-43830-00</a> Gear pump assembly	<a href="#">Buy now</a>
37	<a href="#">6T4-43853-00</a> Spring, main valve	<a href="#">Buy now</a>
38	<a href="#">91318-04025</a> Bolt(62x)	<a href="#">Buy now</a>
39	<a href="#">65W-43817-00</a> Filter 2	<a href="#">Buy now</a>
40	<a href="#">65W-43861-00</a> O-ring	<a href="#">Buy now</a>
41	<a href="#">65W-43862-00</a> O-ring	<a href="#">Buy now</a>
42	<a href="#">6H1-43875-00</a> Ring, snap	<a href="#">Buy now</a>
43	<a href="#">6H1-43845-00</a> Screw, manual release	<a href="#">Buy now</a>
44	<a href="#">93210-18397</a> O-ring (6g5)	<a href="#">Buy now</a>
45	<a href="#">6H1-43847-00</a> Seat, manual valve	<a href="#">Buy now</a>
46	<a href="#">65W-43854-00</a> Spring, manual release	<a href="#">Buy now</a>
47	<a href="#">65W-4382A-00</a> Adaptor 1	<a href="#">Buy now</a>

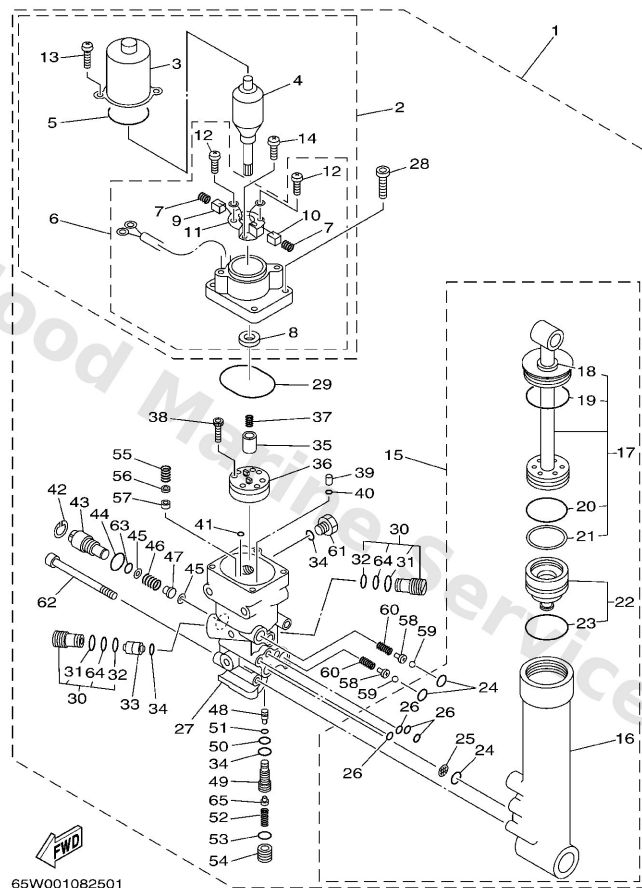
# Power Trim & Tilt Assy



**E5**

Ref	Part	
48	<a href="#">65W-43844-00</a> Pin, valve support	<a href="#">Buy now</a>
49	<a href="#">65W-43851-00</a> Seat, relief valve	<a href="#">Buy now</a>
50	<a href="#">93210-08006</a> O-ring	<a href="#">Buy now</a>
51	<a href="#">93210-03478</a> O-ring(31m)	<a href="#">Buy now</a>
52	<a href="#">65W-43855-00</a> Spring, up relief	<a href="#">Buy now</a>
53	<a href="#">93210-11073</a> O-ring (p95)	<a href="#">Buy now</a>
54	<a href="#">65W-43843-00</a> Screw, valve lock	<a href="#">Buy now</a>
55	<a href="#">6H1-43856-10</a> Spring, down relief	<a href="#">Buy now</a>
56	<a href="#">6H1-43844-10</a> Pin, valve support	<a href="#">Buy now</a>
57	<a href="#">6H1-4384F-10</a> Seal, main valve	<a href="#">Buy now</a>
58	<a href="#">65W-4386A-00</a> Pin, absorber valve	<a href="#">Buy now</a>
59	<a href="#">93501-08001</a> Ball	<a href="#">Buy now</a>
60	<a href="#">65W-43853-00</a> Spring, absorber valve	<a href="#">Buy now</a>
61	<a href="#">6H1-43829-00</a> Plug, reservoir	<a href="#">Buy now</a>
62	<a href="#">62X-43878-00</a> Bolt, socket	<a href="#">Buy now</a>

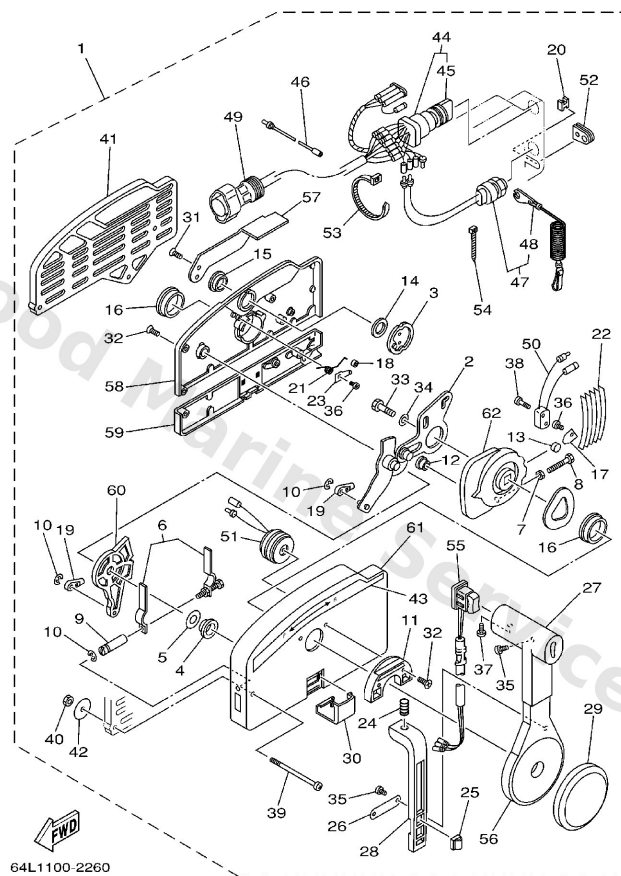
# Power Trim & Tilt Assy



**E5**

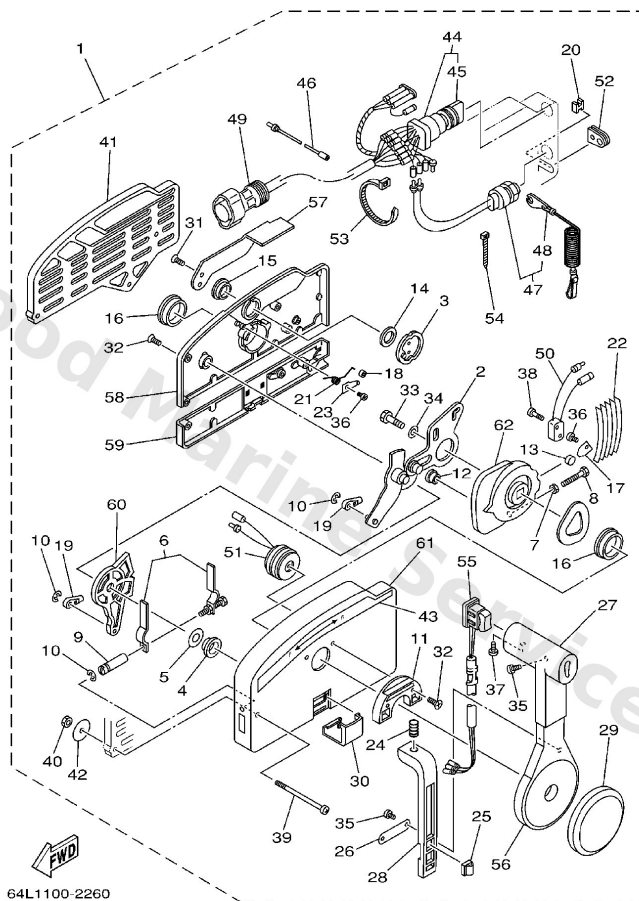
Ref	Part	
63	<a href="#">93210-10M74</a> O-ring	<a href="#">Buy now</a>
64	<a href="#">9321010M74</a> O-ring	<a href="#">Buy now</a>
65	<a href="#">6T44380800</a> Seat valve comp. 1	<a href="#">Buy now</a>

# Remote Control Assy



Ref	Part	
1	<a href="#">703-48205-17</a> Remote control assembly (10p, ptt) <b>AP WITH PT/T SW.</b>	<a href="#">Buy now</a>
2	<a href="#">703-48261-01</a> Arm, throttle	<a href="#">Buy now</a>
3	<a href="#">703-48153-00</a> Shaft, free accel.	<a href="#">Buy now</a>
4	<a href="#">703-48235-00</a> Bushing	<a href="#">Buy now</a>
5	<a href="#">703-48268-00</a> Spacer 3	<a href="#">Buy now</a>
6	<a href="#">703-48264-00</a> Throttle, friction	<a href="#">Buy now</a>
7	<a href="#">95380-05600</a> Nut, hexagon (663)	<a href="#">Buy now</a>
8	<a href="#">97380-05025</a> Bolt	<a href="#">Buy now</a>
9	<a href="#">703-48265-00</a> Shaft Friction	<a href="#">Buy now</a>
10	<a href="#">93430-06024</a> Circlip (701)	<a href="#">Buy now</a>
11	<a href="#">703-48245-00</a> Plate, lock	<a href="#">Buy now</a>
12	<a href="#">703-48252-00</a> Roller, cam	<a href="#">Buy now</a>
13	<a href="#">701-48248-00</a> Roller, free accel	<a href="#">Buy now</a>
14	<a href="#">703-48198-00</a> Washer, wave 3	<a href="#">Buy now</a>
15	<a href="#">703-48243-00</a> Bushing 3	<a href="#">Buy now</a>

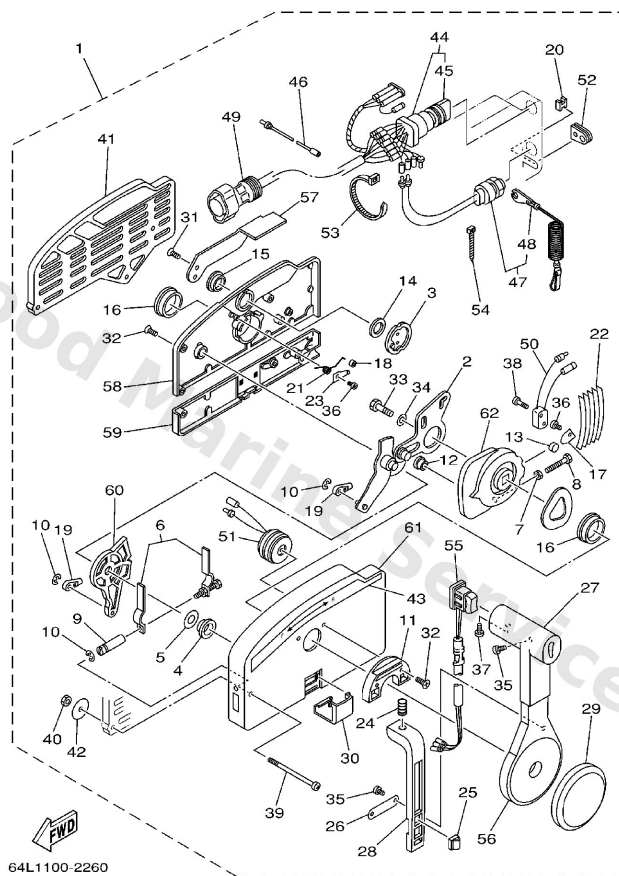
# Remote Control Assy



A6

Ref	Part	
16	<a href="#">703-48236-00</a> Bushing	<a href="#">Buy now</a>
17	<a href="#">703-48189-00</a> Retainer	<a href="#">Buy now</a>
18	<a href="#">703-48234-00</a> Roller, detent	<a href="#">Buy now</a>
19	<a href="#">703-48345-01</a> Cable end, remote control 2	<a href="#">Buy now</a>
20	<a href="#">703-48358-00</a> Anchor, cable	<a href="#">Buy now</a>
21	<a href="#">703-48244-00</a> Spring, free accel.	<a href="#">Buy now</a>
22	<a href="#">703-48238-00</a> Spring, detent	<a href="#">Buy now</a>
23	<a href="#">703-48246-00</a> Spacer 1	<a href="#">Buy now</a>
24	<a href="#">703-48227-00</a> Spring, neutral lock	<a href="#">Buy now</a>
25	<a href="#">703-82594-00</a> Clamp WITH PT/T SW.	<a href="#">Buy now</a>
26	<a href="#">703-48226-00</a> Plate, stopper	<a href="#">Buy now</a>
27	<a href="#">703-48222-00</a> Grip, control lever SINGLE	<a href="#">Buy now</a>
28	<a href="#">703-48223-00</a> Lock, neutral	<a href="#">Buy now</a>
29	<a href="#">703-48225-00</a> Cover	<a href="#">Buy now</a>
30	<a href="#">703-48219-00</a> Cover, lead	<a href="#">Buy now</a>

# Remote Control Assy

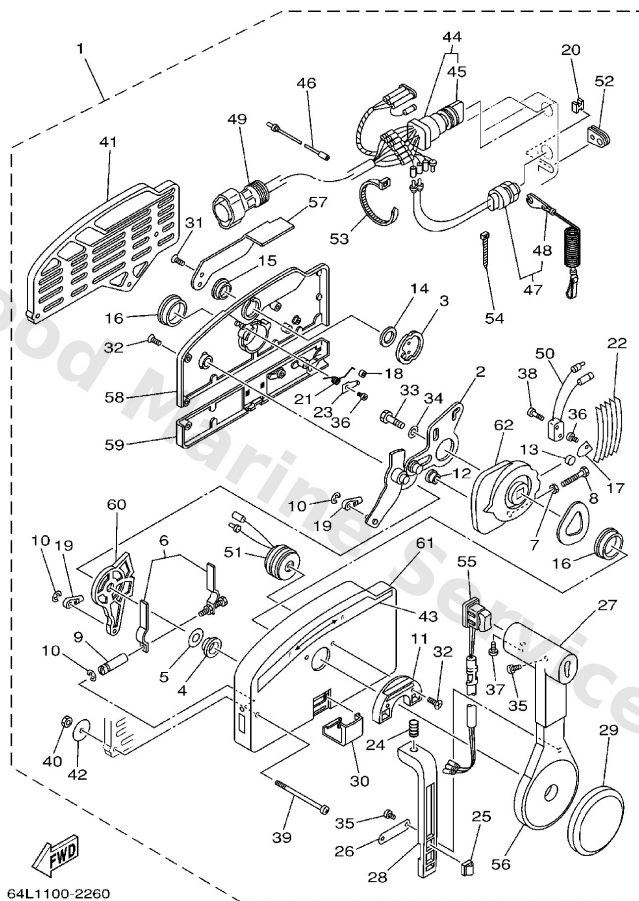


**A6**

Ref	Part	
31	<a href="#">703-48281-00</a> Screw, flat head	<a href="#">Buy now</a>
32	<a href="#">703-48282-00</a> Screw	<a href="#">Buy now</a>
33	<a href="#">97380-08030</a> Bolt, hexagon (fj1)	<a href="#">Buy now</a>
34	<a href="#">92990-08600</a> Washer, plain (663)	<a href="#">Buy now</a>
35	<a href="#">98580-04010</a> Screw, pan head (e56)	<a href="#">Buy now</a>
36	<a href="#">98580-04006</a> Screw, pan head (7h3)	<a href="#">Buy now</a>
37	<a href="#">98580-05010</a> Screw, pan head(62x)	<a href="#">Buy now</a>
38	<a href="#">98580-03015</a> Screw, pan head (n151)	<a href="#">Buy now</a>
39	<a href="#">703-48291-10</a> Screw	<a href="#">Buy now</a>
40	<a href="#">95380-06600</a> Nut(661)	<a href="#">Buy now</a>
41	<a href="#">703-48293-10</a> Spacer, remote control <b>SINGLE</b>	<a href="#">Buy now</a>
42	<a href="#">701-48287-00</a> Washer 1	<a href="#">Buy now</a>
43	<a href="#">703-48215-00</a> Graphic	<a href="#">Buy now</a>
44	<a href="#">703-82510-43</a> Main switch assembly	<a href="#">Buy now</a>
45	<a href="#">703-82577-00</a> Cap, key	<a href="#">Buy now</a>



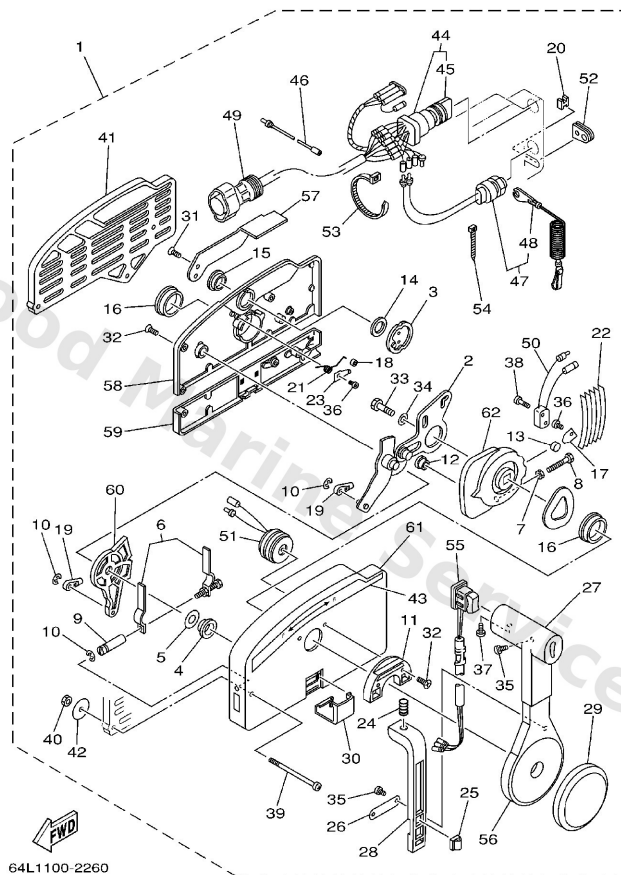
# Remote Control Assy



A6

Ref	Part	
46	<a href="#">703-82531-00</a> Wire, lead	<a href="#">Buy now</a>
47	<a href="#">688-82575-01</a> Engine stop switch assembly	<a href="#">Buy now</a>
48	<a href="#">682-82556-00</a> Lanyard, stop switch	<a href="#">Buy now</a>
49	<a href="#">688-8258A-20</a> 10p main harness mec 2m (6ft) LJ5M (10P)	<a href="#">Buy now</a>
50	<a href="#">703-82540-00</a> Neutral switch assembly	<a href="#">Buy now</a>
51	<a href="#">703-83383-02</a> Buzzer	<a href="#">Buy now</a>
52	<a href="#">703-48284-00</a> Grommet	<a href="#">Buy now</a>
53	<a href="#">703-82591-00</a> Band	<a href="#">Buy now</a>
54	<a href="#">703-82592-00</a> Band	<a href="#">Buy now</a>
55	<a href="#">703-82563-02</a> Trim & tilt switch assembly WITH PT/T SW.	<a href="#">Buy now</a>
56	<a href="#">703-48221-00</a> Grip	<a href="#">Buy now</a>
57	<a href="#">703-48152-00</a> Knob, free accel	<a href="#">Buy now</a>
58	<a href="#">703-48212-00</a> Rear housing	<a href="#">Buy now</a>
59	<a href="#">703-48213-00</a> Back, panel	<a href="#">Buy now</a>
60	<a href="#">703-48271-00</a> Arm, shift	<a href="#">Buy now</a>

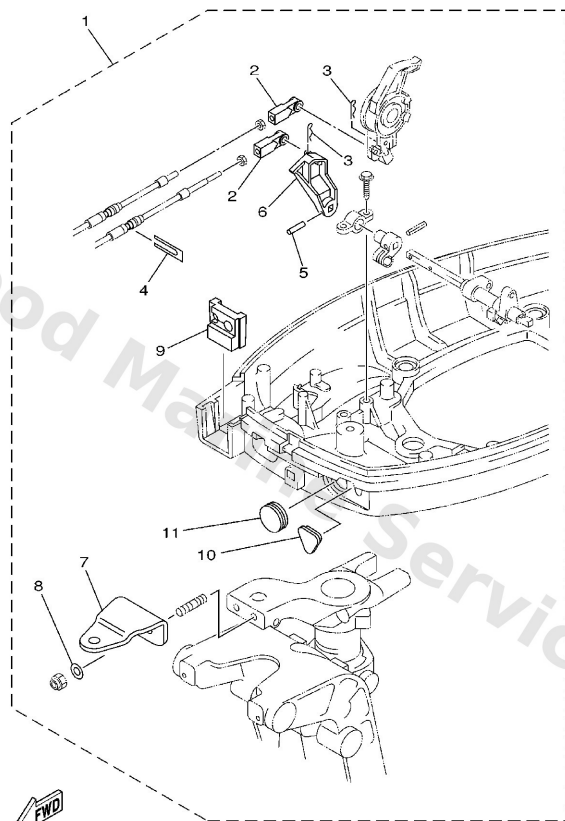
# Remote Control Assy



**A6**

Ref	Part	
61	<a href="#">703-48211-01</a> Housing,1	<a href="#">Buy now</a>
62	<a href="#">703-48232-00</a> Drive gear	<a href="#">Buy now</a>

## Remote Control Attachment

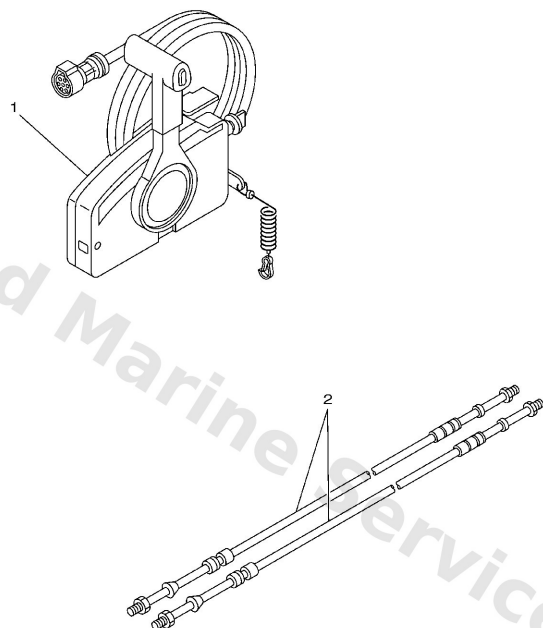


66T0010-1170

**D4**

Ref	Part	
1	<a href="#">66T-48501-01</a> Remote cont. attachment assembly. <b>AP</b>	<a href="#">Buy now</a>
2	<a href="#">663-48344-00</a> Cable end, remote control	<a href="#">Buy now</a>
3	<a href="#">90468-18008</a> Clip 620436610000	<a href="#">Buy now</a>
4	<a href="#">6H3-48538-00</a> Clamp, cable	<a href="#">Buy now</a>
5	<a href="#">90254-03M04</a> Pin, spring (6h3)	<a href="#">Buy now</a>
6	<a href="#">66T-44125-01</a> Lever, shift rod	<a href="#">Buy now</a>
7	<a href="#">65W-48511-00</a> Hook, steering	<a href="#">Buy now</a>
8	<a href="#">90201-10120</a> Washer, plate	<a href="#">Buy now</a>
9	<a href="#">66T-42725-30</a> Grommet	<a href="#">Buy now</a>
10	<a href="#">65W-26326-10</a> Grommet	<a href="#">Buy now</a>
11	<a href="#">65W-42726-10</a> Grommet	<a href="#">Buy now</a>

# Remote Control Box

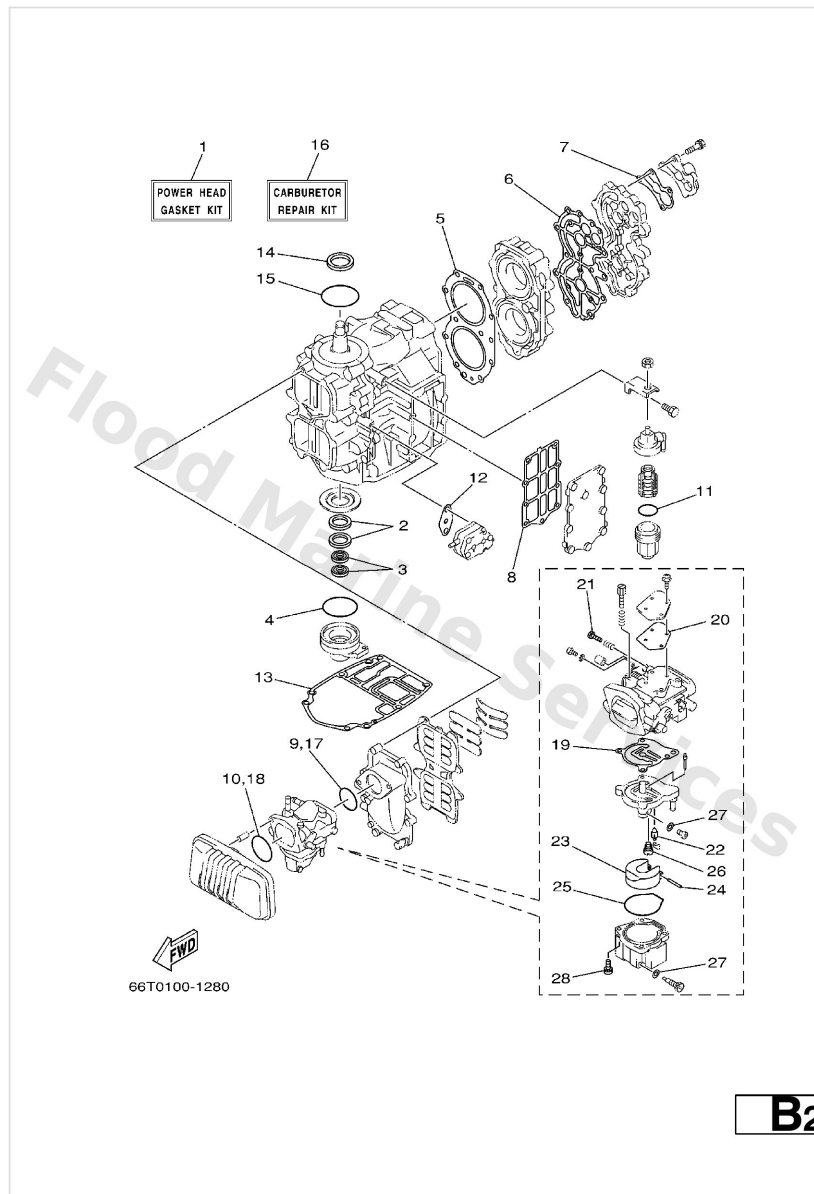


67M0100-8280

A5

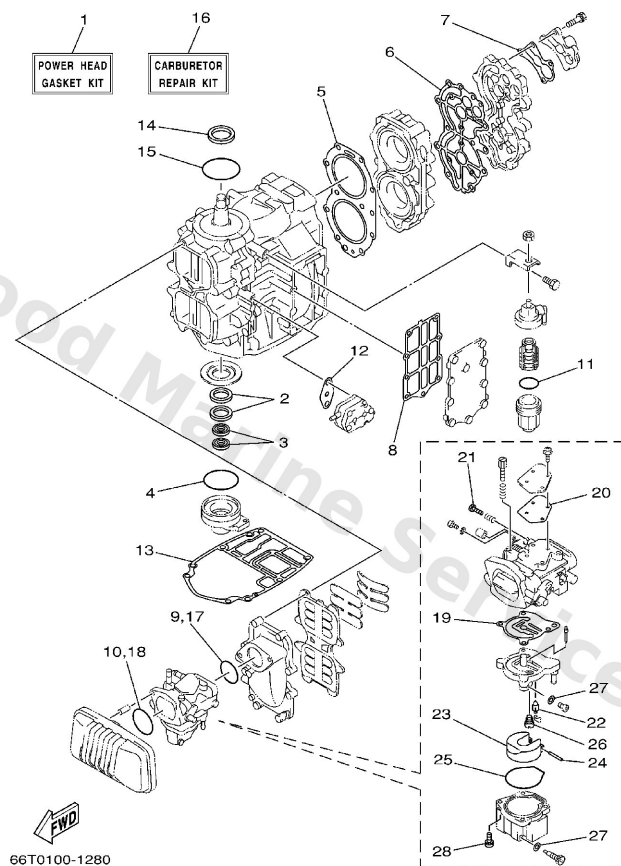
Ref	Part	
1	<a href="#">703-48205-17</a> Remote control assembly (10p, ptt) AP WITH PT/T SW.	<a href="#">Buy now</a>
2	<a href="#">701-48310-90</a> Cable, Remote Control L=11F UR	<a href="#">Buy now</a>
2	<a href="#">701-48320-00</a> Cable, Remote Control L=12F UR	<a href="#">Buy now</a>
2	<a href="#">701-48320-20</a> Cable, Remote Control L=13F UR	<a href="#">Buy now</a>
2	<a href="#">701-48320-30</a> Cable, Remote Control L=14F UR	<a href="#">Buy now</a>
2	<a href="#">701-48320-50</a> Cable, Remote Control L=15F UR	<a href="#">Buy now</a>
2	<a href="#">701-48320-60</a> Cable, Remote Control L=16F UR	<a href="#">Buy now</a>
2	<a href="#">701-48320-80</a> Cable, Remote Control L=17F UR	<a href="#">Buy now</a>

# Repair Kit 1



Ref	Part	
1	<a href="#">66T-W0001-01</a> Power head gasket kit	<a href="#">Buy now</a>
2	<a href="#">93102-30M56</a> Oil seal	<a href="#">Buy now</a>
3	<a href="#">93101-16001</a> Oil seal	<a href="#">Buy now</a>
4	<a href="#">93210-65M50</a> O-ring	<a href="#">Buy now</a>
5	<a href="#">66T-11181-A2</a> Gasket, cylinder head 1	<a href="#">Buy now</a>
6	<a href="#">66T-11193-A2</a> Gasket, head cover 1	<a href="#">Buy now</a>
7	<a href="#">676-12414-A1</a> Gasket, cover	<a href="#">Buy now</a>
8	<a href="#">66T-41114-A0</a> Gasket, exhaust outer cover	<a href="#">Buy now</a>
9	<a href="#">93210-46M16</a> O-ring (688)	<a href="#">Buy now</a>
10	<a href="#">93210-54M54</a> O-ring (6g1)	<a href="#">Buy now</a>
11	<a href="#">93210-32738</a> O-ring(1wg)	<a href="#">Buy now</a>
12	<a href="#">650-24431-A0</a> Gasket,fuel pump	<a href="#">Buy now</a>
13	<a href="#">66T-45113-A0</a> Gasket, upper casing	<a href="#">Buy now</a>
14	<a href="#">93102-35008</a> Oil seal	<a href="#">Buy now</a>
15	<a href="#">93210-75M51</a> O-ring (6f5)	<a href="#">Buy now</a>

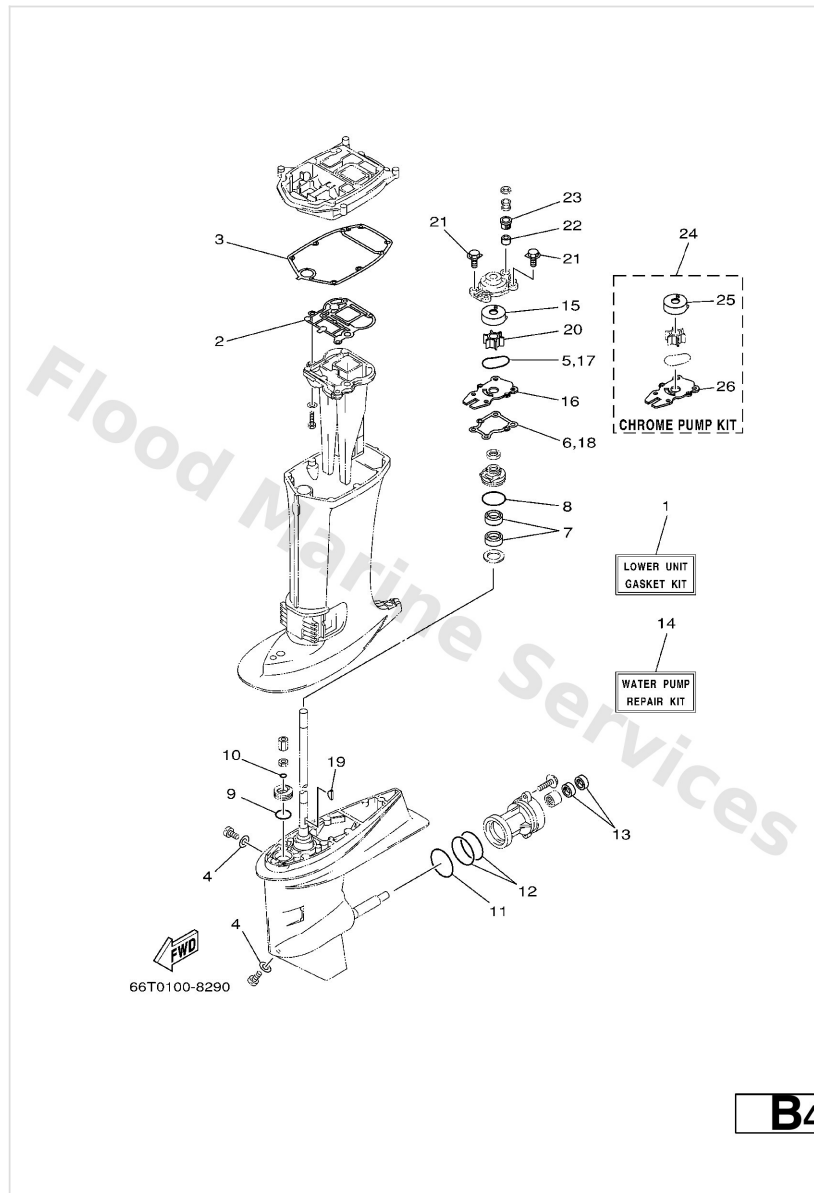
# Repair Kit 1



**B2**

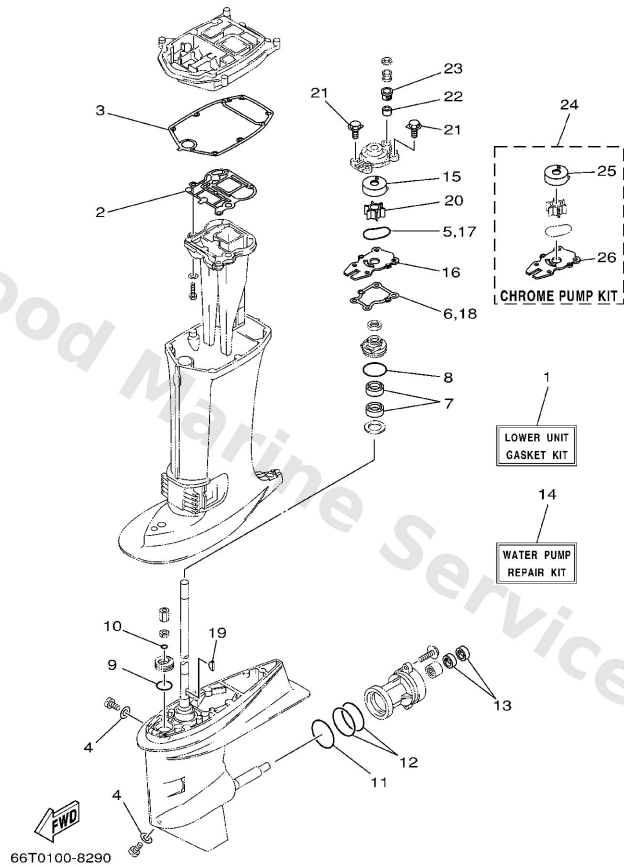
Ref	Part	
16	<a href="#">66T-W0093-01</a> Carburetor repair kit	<a href="#">Buy now</a>
19	<a href="#">66T-14384-01</a> Gasket, float chamber	<a href="#">Buy now</a>
20	<a href="#">66T-14536-00</a> Gasket	<a href="#">Buy now</a>
21	<a href="#">6E5-14323-03</a> Screw, air adjusting	<a href="#">Buy now</a>
22	<a href="#">6E5-14546-00</a> Valve, needle	<a href="#">Buy now</a>
23	<a href="#">6E5-14385-02</a> Float	<a href="#">Buy now</a>
24	<a href="#">6E5-14386-02</a> Pin, float	<a href="#">Buy now</a>
25	<a href="#">66T-14984-00</a> Gasket, float chamber	<a href="#">Buy now</a>
26	<a href="#">66T-14992-00</a> Plug	<a href="#">Buy now</a>
27	<a href="#">66T-14959-00</a> Gasket	<a href="#">Buy now</a>
28	<a href="#">97980-05125</a> Screw, panhead (a93)	<a href="#">Buy now</a>

## Repair Kit 2



Ref	Part	
1	<a href="#">66T-W0001-20</a> Lower unit gasket kit	<a href="#">Buy now</a>
2	<a href="#">66T-41133-A0</a> Gasket, exhaust manifold 1	<a href="#">Buy now</a>
3	<a href="#">66T-45114-A0</a> Gasket, upper casing	<a href="#">Buy now</a>
4	<a href="#">90430-08020</a> Gasket	<a href="#">Buy now</a>
5	<a href="#">93210-59MG7</a> O-ring	<a href="#">Buy now</a>
6	<a href="#">63D-44316-00</a> Gasket, water pump	<a href="#">Buy now</a>
7	<a href="#">93101-22M60</a> Oil seal	<a href="#">Buy now</a>
8	<a href="#">93210-48MG8</a> O-ring	<a href="#">Buy now</a>
9	<a href="#">93210-33MG4</a> O-ring	<a href="#">Buy now</a>
10	<a href="#">93210-06ME6</a> O-ring	<a href="#">Buy now</a>
11	<a href="#">93210-69MG6</a> O-ring	<a href="#">Buy now</a>
12	<a href="#">93210-74MG5</a> O-ring (sea)	<a href="#">Buy now</a>
13	<a href="#">93101-22M00</a> Oil seal (22x36x6-663)	<a href="#">Buy now</a>
14	<a href="#">66T-W0078-00</a> Water pump repair kit	<a href="#">Buy now</a>
15	<a href="#">63D-44322-00</a> Insert, cartridge	<a href="#">Buy now</a>

## Repair Kit 2

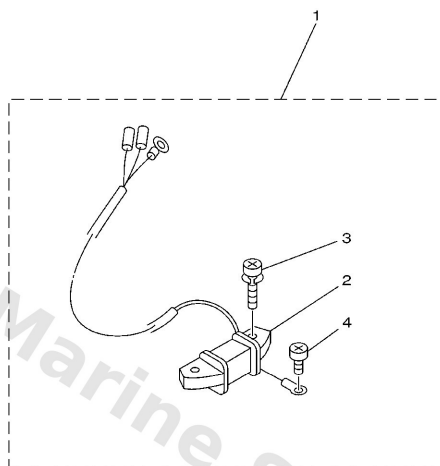


**B4**

Ref	Part	
16	<a href="#">66T-44323-00</a> Outer plate, cartridge	<a href="#">Buy now</a>
19	<a href="#">90280-03M03</a> Key, woodruff (697)	<a href="#">Buy now</a>
20	<a href="#">6H4-44352-02</a> Impeller	<a href="#">Buy now</a>
21	<a href="#">90119-08M15</a> Bolt, with washer(62w)	<a href="#">Buy now</a>
22	<a href="#">663-44366-00</a> Damper, water seal 2	<a href="#">Buy now</a>
23	<a href="#">63D-44312-00</a> Cover, water pump housing	<a href="#">Buy now</a>
24	<a href="#">66T-W0078-0A</a> Chrome pump kit	<a href="#">Buy now</a>
25	<a href="#">63D-44322-40</a> Insert, cartridge	<a href="#">Buy now</a>
26	<a href="#">66T-44323-40</a> Outer plate, cartridge	<a href="#">Buy now</a>



## Repair Kit 3

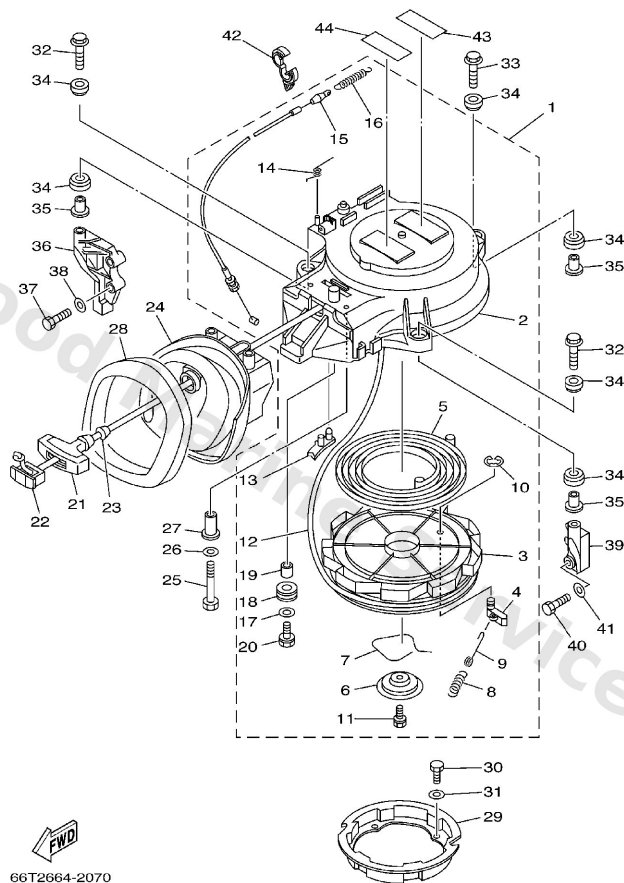


66T0010-9270

**B5**

Ref	Part	
1	<a href="#">66T-81303-00</a> Lighting coil assembly AP	<a href="#">Buy now</a>
2	<a href="#">66T-85533-00</a> Coil, lighting	<a href="#">Buy now</a>
3	<a href="#">97902-06125</a> Screw, pan head (76t)	<a href="#">Buy now</a>
4	<a href="#">97802-04006</a> Screw, pan head(3xp)	<a href="#">Buy now</a>

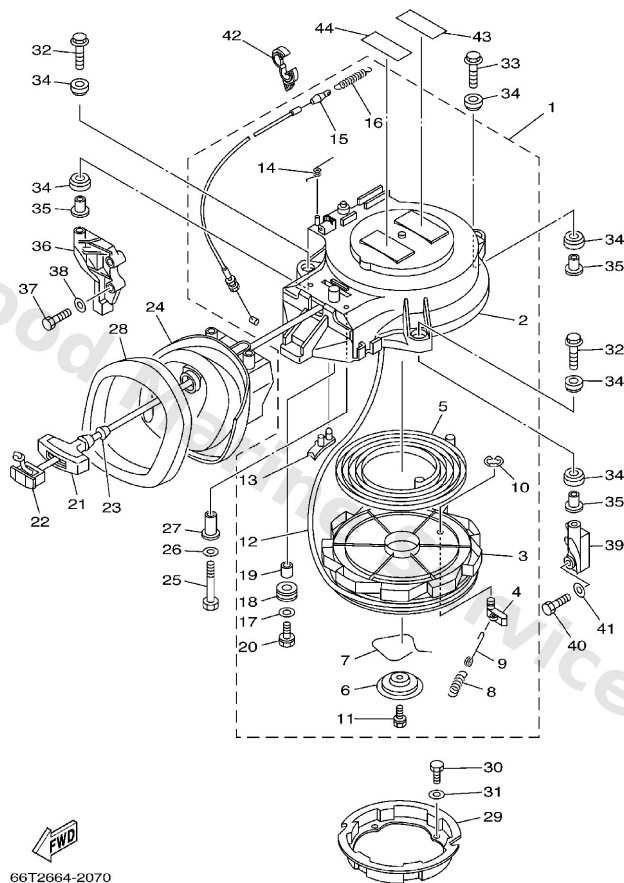
# Starter



**B5**

Ref	Part	
1	<a href="#">66T-15710-00</a> Starter assembly	<a href="#">Buy now</a>
2	<a href="#">66T-15711-00</a> Case, starter	<a href="#">Buy now</a>
3	<a href="#">66T-15714-00</a> Drum, sheave	<a href="#">Buy now</a>
4	<a href="#">63V-15741-00</a> Pawl, drive	<a href="#">Buy now</a>
5	<a href="#">66T-15713-00</a> Spring, starter	<a href="#">Buy now</a>
6	<a href="#">66T-15716-00</a> Plate, drive	<a href="#">Buy now</a>
7	<a href="#">66T-15705-00</a> Spring, drive pawl	<a href="#">Buy now</a>
8	<a href="#">66T-15767-00</a> Spring	<a href="#">Buy now</a>
9	<a href="#">66T-15784-00</a> Spring, return	<a href="#">Buy now</a>
10	<a href="#">63V-15744-00</a> Circlip	<a href="#">Buy now</a>
11	<a href="#">63V-15768-00</a> Screw	<a href="#">Buy now</a>
12	<a href="#">*</a> item_description	<a href="#">Buy now</a>
13	<a href="#">66T-15794-00</a> Stopper	<a href="#">Buy now</a>
14	<a href="#">66T-15734-00</a> Spring, return	<a href="#">Buy now</a>
15	<a href="#">66T-15770-00</a> Cable comp., starter stop	<a href="#">Buy now</a>

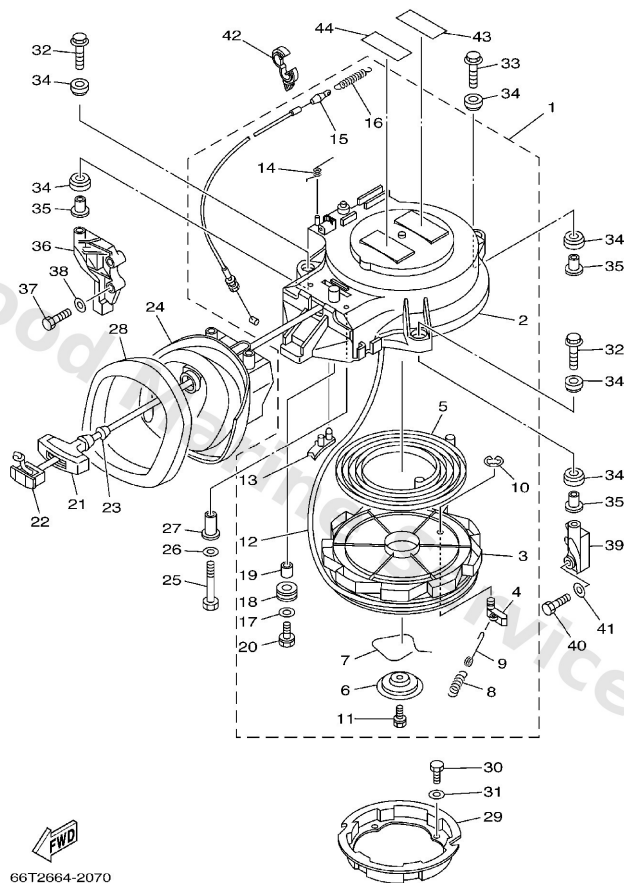
# Starter



**B5**

Ref	Part	
16	<a href="#">66T-15731-00</a> Retainer, spring	<a href="#">Buy now</a>
17	<a href="#">6F5-15791-00</a> Washer, lock	<a href="#">Buy now</a>
18	<a href="#">6F5-15752-00</a> Roller, wire	<a href="#">Buy now</a>
19	<a href="#">6F5-15753-00</a> Bushing 1	<a href="#">Buy now</a>
20	<a href="#">6F5-15768-00</a> Bolt	<a href="#">Buy now</a>
21	<a href="#">689-15755-01</a> Handle, starter	<a href="#">Buy now</a>
22	<a href="#">6F5-15779-02</a> Cover	<a href="#">Buy now</a>
23	<a href="#">697-15789-00</a> Damper	<a href="#">Buy now</a>
24	<a href="#">66T-15758-01</a> Guide, rope	<a href="#">Buy now</a>
25	<a href="#">97095-06035</a> Bolt(j52)	<a href="#">Buy now</a>
26	<a href="#">92995-06600</a> Washer, plain (646)	<a href="#">Buy now</a>
27	<a href="#">90387-06M66</a> Collar (6h4)	<a href="#">Buy now</a>
28	<a href="#">66T-15762-01</a> Seal, rubber 2	<a href="#">Buy now</a>
29	<a href="#">66T-15723-00</a> Pulley, starter	<a href="#">Buy now</a>
30	<a href="#">97095-06010</a> Bolt	<a href="#">Buy now</a>

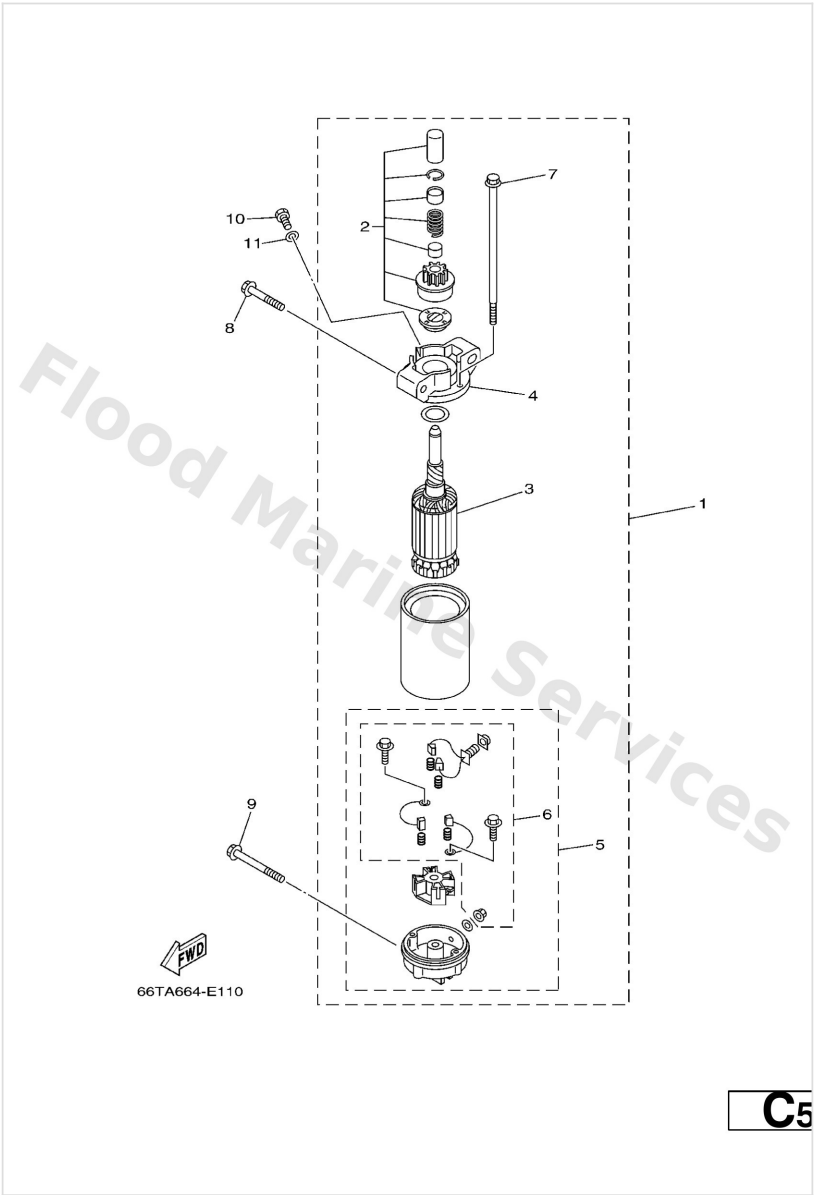
# Starter



**B5**

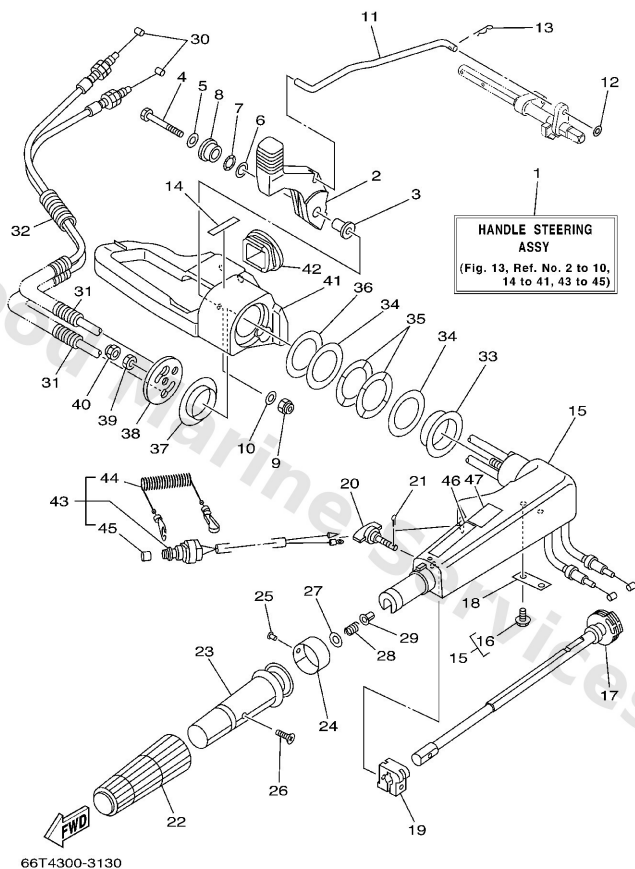
Ref	Part	
32	<a href="#">90119-08M10</a> Bolt, with washer	<a href="#">Buy now</a>
33	<a href="#">90119-08M51</a> Bolt, with washer	<a href="#">Buy now</a>
34	<a href="#">90385-12M04</a> Bushing (6f5)	<a href="#">Buy now</a>
35	<a href="#">90387-08M05</a> Collar (663)	<a href="#">Buy now</a>
36	<a href="#">66T-15771-00-94</a> Stay 1	<a href="#">Buy now</a>
37	<a href="#">97013-06030</a> Bolt	<a href="#">Buy now</a>
38	<a href="#">92903-06600</a> Washer, plain (646)	<a href="#">Buy now</a>
39	<a href="#">66T-15772-00-94</a> Stay 2	<a href="#">Buy now</a>
42	<a href="#">90464-13249</a> Clamp	<a href="#">Buy now</a>
43	<a href="#">6A1-83625-41</a> Mark 5	<a href="#">Buy now</a>
44	<a href="#">6A1-83625-51</a> Mark 5	<a href="#">Buy now</a>

## Starting Motor



Ref	Part	
1	<a href="#">66T-81800-01</a> Starting motor assembly	<a href="#">Buy now</a>
2	<a href="#">66T-81857-00</a> Pinion stopper set	<a href="#">Buy now</a>
3	<a href="#">66T-81850-01</a> Armature assembly	<a href="#">Buy now</a>
4	<a href="#">66T-81830-00</a> Front bracket assembly	<a href="#">Buy now</a>
5	<a href="#">66T-81820-00</a> Rear bracket assembly	<a href="#">Buy now</a>
6	<a href="#">66T-81840-00</a> Brush holder assembly	<a href="#">Buy now</a>
7	<a href="#">66T-81826-00</a> Bolt	<a href="#">Buy now</a>
8	<a href="#">90119-08M39</a> Bolt, with washer	<a href="#">Buy now</a>
9	<a href="#">90119-08M52</a> Bolt, with washer	<a href="#">Buy now</a>
10	<a href="#">97095-08016</a> Bolt, hexagon deep recess	<a href="#">Buy now</a>
11	<a href="#">92995-08600</a> Washer, plain (663)	<a href="#">Buy now</a>

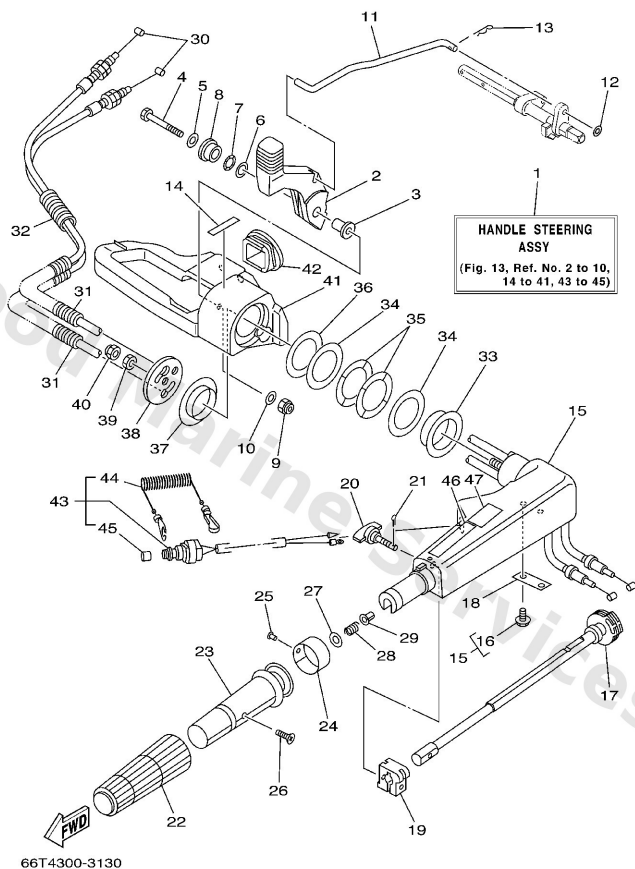
# Steering



**D1**

Ref	Part	
2	<a href="#">66T-44111-02</a> Handle, gear shift	<a href="#">Buy now</a>
3	<a href="#">90387-06M86</a> Collar	<a href="#">Buy now</a>
4	<a href="#">97095-06050</a> Bolt(jf7)	<a href="#">Buy now</a>
5	<a href="#">92995-06600</a> Washer, plain (646)	<a href="#">Buy now</a>
6	<a href="#">90201-12M07</a> Washer, plate	<a href="#">Buy now</a>
7	<a href="#">90206-12052</a> Washer, wave (666)	<a href="#">Buy now</a>
8	<a href="#">66T-42123-00</a> Bolt, handle joint	<a href="#">Buy now</a>
9	<a href="#">95780-06300</a> Nut, nylon (6g1)	<a href="#">Buy now</a>
10	<a href="#">92995-06200</a> Ybs66-6 washer, plain	<a href="#">Buy now</a>
11	<a href="#">66T-44124-00</a> Link, shift rod	<a href="#">Buy now</a>
12	<a href="#">92990-06200</a> Ybs66-6 washer, plain	<a href="#">Buy now</a>
13	<a href="#">90468-18008</a> Clip 620436610000	<a href="#">Buy now</a>
14	<a href="#">6E0-44191-11</a> Indicator, shift	<a href="#">Buy now</a>
16	<a href="#">90109-06M86</a> Bolt	<a href="#">Buy now</a>
17	<a href="#">65W-42138-00</a> Lever, throttle	<a href="#">Buy now</a>

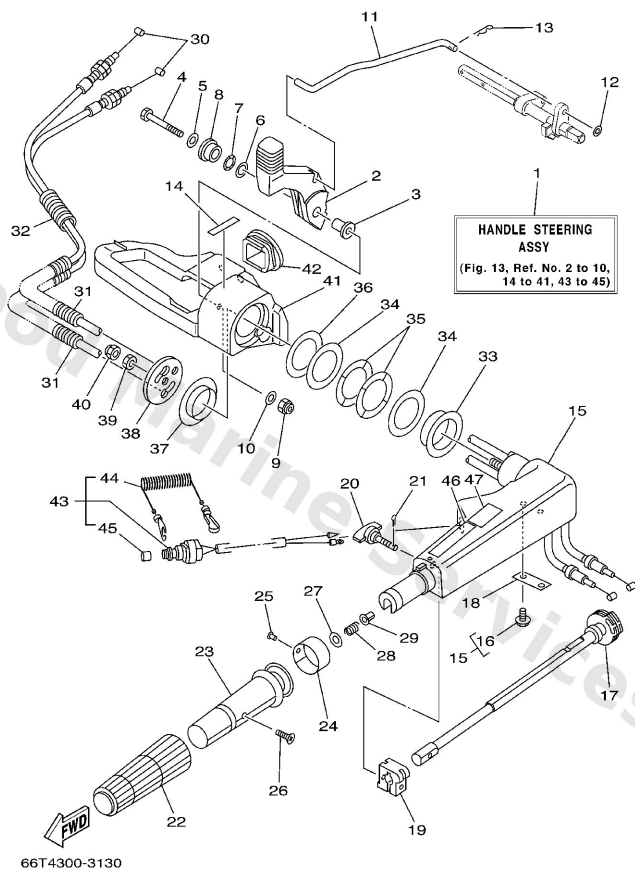
# Steering



**D1**

Ref	Part	
18	<a href="#">65W-42159-00</a> Stay	<a href="#">Buy now</a>
19	<a href="#">6G1-42126-00</a> Piece, friction	<a href="#">Buy now</a>
20	<a href="#">65W-42125-00</a> Bolt, friction adjusting	<a href="#">Buy now</a>
21	<a href="#">91490-20010</a> Pin, cotter	<a href="#">Buy now</a>
22	<a href="#">6F6-42177-A0</a> Rubber, handle	<a href="#">Buy now</a>
23	<a href="#">664-42119-00</a> Grip, steering handle	<a href="#">Buy now</a>
24	<a href="#">6G1-42137-10</a> Indicator, throttle	<a href="#">Buy now</a>
25	<a href="#">90269-02M09</a> Rivet(6I5)	<a href="#">Buy now</a>
26	<a href="#">90149-05M13</a> Screw, countersunk	<a href="#">Buy now</a>
27	<a href="#">92903-10600</a> Washer, plate	<a href="#">Buy now</a>
28	<a href="#">90501-23215</a> Spring (655)	<a href="#">Buy now</a>
29	<a href="#">90386-08032</a> Bushing (650)	<a href="#">Buy now</a>
30	<a href="#">66T-26301-00</a> Throttle cable assembly	<a href="#">Buy now</a>
31	<a href="#">90446-10M87</a> Hose	<a href="#">Buy now</a>
32	<a href="#">90446-10M86</a> Hose	<a href="#">Buy now</a>

# Steering

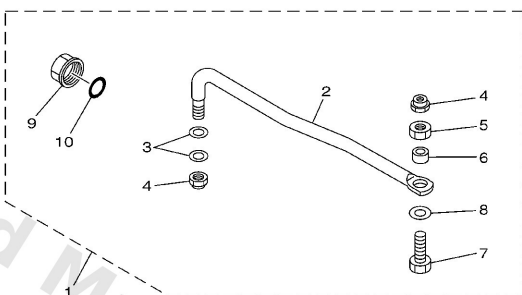


**D1**

Ref	Part	
33	<a href="#">90386-40MA0</a> Bushing	<a href="#">Buy now</a>
34	<a href="#">90201-43M00</a> Washer, plate	<a href="#">Buy now</a>
35	<a href="#">90206-43M22</a> Washer, wave	<a href="#">Buy now</a>
36	<a href="#">90202-43M57</a> Washer, plate	<a href="#">Buy now</a>
37	<a href="#">90386-40M99</a> Bush	<a href="#">Buy now</a>
38	<a href="#">65W-42131-01</a> Cover, handle steering	<a href="#">Buy now</a>
39	<a href="#">95380-10700</a> Nut (682)	<a href="#">Buy now</a>
40	<a href="#">95780-10300</a> Nut, nylon (6e5)	<a href="#">Buy now</a>
42	<a href="#">66T-41273-00</a> Grommet	<a href="#">Buy now</a>
43	<a href="#">66T-82575-01</a> Engine stop switch assembly	<a href="#">Buy now</a>
44	<a href="#">682-82556-00</a> Lanyard, stop switch	<a href="#">Buy now</a>
45	<a href="#">689-8257Y-00</a> Cap	<a href="#">Buy now</a>
46	<a href="#">6E0-83627-41</a> Label, caution 7	<a href="#">Buy now</a>
47	<a href="#">6E0-83627-51</a> Label, Caution 7	<a href="#">Buy now</a>



# Steering Guide

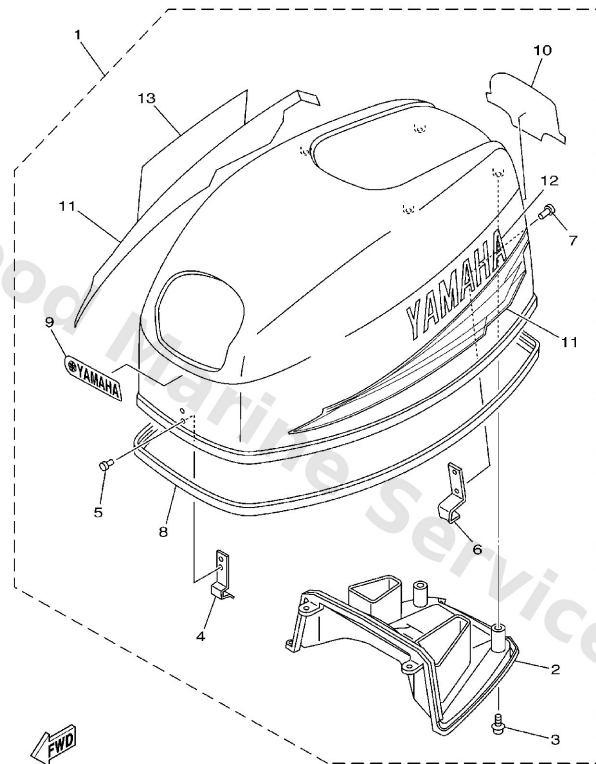


65W0010-B210

A4

Ref	Part	
1	<a href="#">65W-61350-00</a> Steering guide attachment kit AP	<a href="#">Buy now</a>
2	<a href="#">65W-61351-00</a> Rod, steering link	<a href="#">Buy now</a>
3	<a href="#">90201-10M20</a> Washer, plate (663)	<a href="#">Buy now</a>
4	<a href="#">90185-09M01</a> Nut, nylon (663)	<a href="#">Buy now</a>
5	<a href="#">90170-09M03</a> Nut (689)	<a href="#">Buy now</a>
6	<a href="#">90387-10M42</a> Coller (688)	<a href="#">Buy now</a>
7	<a href="#">90101-09M01</a> Bolt(62x)	<a href="#">Buy now</a>
8	<a href="#">90201-10M63</a> Washer, plate	<a href="#">Buy now</a>
9	<a href="#">6E5-43145-01</a> Cap, clamp bracket	<a href="#">Buy now</a>
10	<a href="#">93210-16275</a> O-ring	<a href="#">Buy now</a>

## Top Cowling

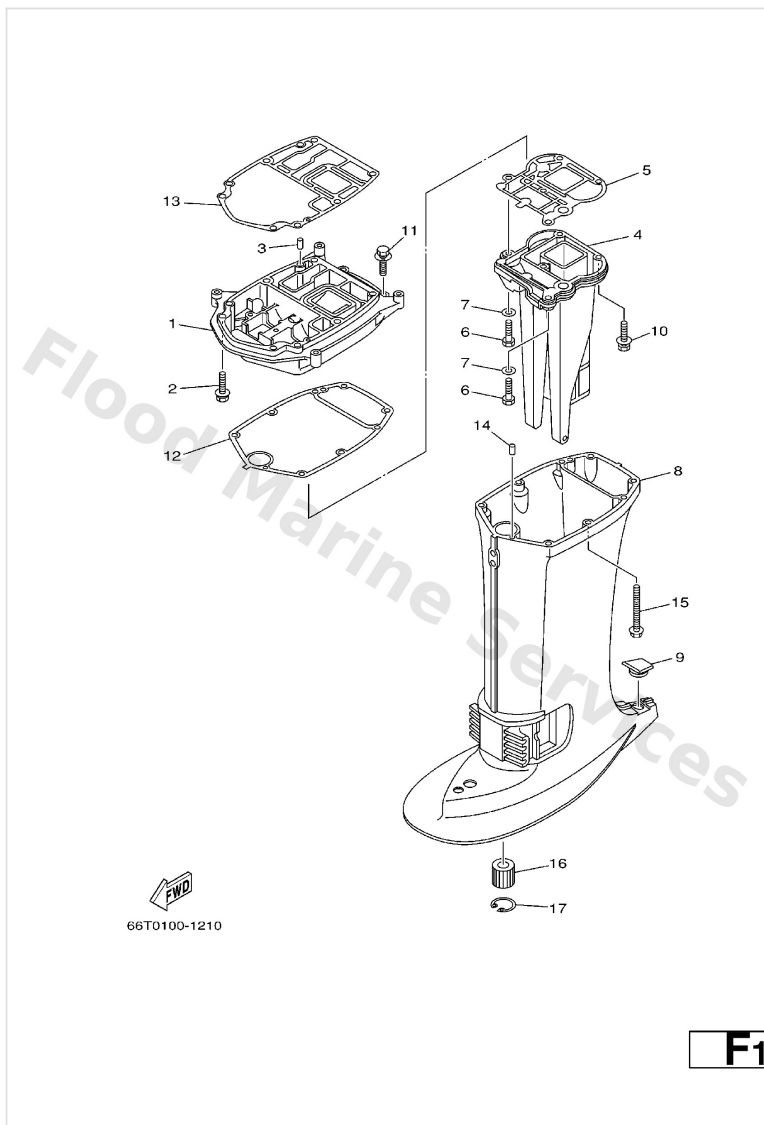


66T2300-2010

**A4**

Ref	Part	
1	<a href="#">66T-42610-C0-4D</a> Top Cowling assembly	<a href="#">Buy now</a>
2	<a href="#">66T-42613-01</a> Molding, air duct	<a href="#">Buy now</a>
3	<a href="#">97780-50616</a> Screw, pan head tapping (ak5)	<a href="#">Buy now</a>
4	<a href="#">6E0-42651-02</a> Hook	<a href="#">Buy now</a>
5	<a href="#">90266-04M04</a> Rivet(6e7)	<a href="#">Buy now</a>
6	<a href="#">6F5-42652-01</a> Hook	<a href="#">Buy now</a>
7	<a href="#">90266-04M01</a> Rivet (689)	<a href="#">Buy now</a>
8	<a href="#">66T-42615-02</a> Seal	<a href="#">Buy now</a>
9	<a href="#">688-42677-D0</a> Graphic, front	<a href="#">Buy now</a>
10	<a href="#">63D-42678-11</a> Graphic, rear	<a href="#">Buy now</a>
11	<a href="#">63D-W0070-10</a> Graphic set	<a href="#">Buy now</a>
12	<a href="#">63D-42681-10</a> Mark, cowling	<a href="#">Buy now</a>
13	<a href="#">63D-42682-10</a> Mark, cowling	<a href="#">Buy now</a>

## Upper Casing



Ref	Part	
1	<a href="#">66T-41137-00-94</a> Guide, exhaust	<a href="#">Buy now</a>
2	<a href="#">90119-08M79</a> Bolt, hexagon (fj1)	<a href="#">Buy now</a>
3	<a href="#">93606-12019</a> Pin, dowel (614)	<a href="#">Buy now</a>
4	<a href="#">66T-41131-10-5B</a> Manifold, ext. 1 L	<a href="#">Buy now</a>
5	<a href="#">66T-41133-A0</a> Gasket, exhaust manifold 1	<a href="#">Buy now</a>
6	<a href="#">97075-08030</a> Bolt, hexagon (fj1)	<a href="#">Buy now</a>
7	<a href="#">92995-08600</a> Washer, plain (663)	<a href="#">Buy now</a>
8	<a href="#">66T-45111-10-4D</a> Casing, upper L	<a href="#">Buy now</a>
9	<a href="#">63D-45155-00</a> Cap	<a href="#">Buy now</a>
10	<a href="#">97575-08545</a> Bolt, hexagon w/w deep recess	<a href="#">Buy now</a>
12	<a href="#">66T-45114-A0</a> Gasket, upper casing	<a href="#">Buy now</a>
13	<a href="#">66T-45113-A0</a> Gasket, upper casing	<a href="#">Buy now</a>
15	<a href="#">90119-08M42</a> Bolt, with washer	<a href="#">Buy now</a>
16	<a href="#">679-45318-00</a> Bushing, drive shaft 3 L	<a href="#">Buy now</a>
17	<a href="#">93420-30042</a> Circlip (650) L	<a href="#">Buy now</a>

# Disclaimer

This document is provided for convenience only. It is **not** an official Yamaha publication and is **not supplied, endorsed, or approved** by Yamaha Motor Co., Ltd.

Reasonable efforts are made to keep information accurate; however diagrams, part references, supersessions, descriptions, and applicability may contain errors or omissions. Specifications and part availability may change without notice.

You are responsible for confirming the correct parts for your engine (including model code, year, serial range, and any superseded part numbers) before ordering or fitting.