



# Yamaha 70BETO 2001

## Parts Manual

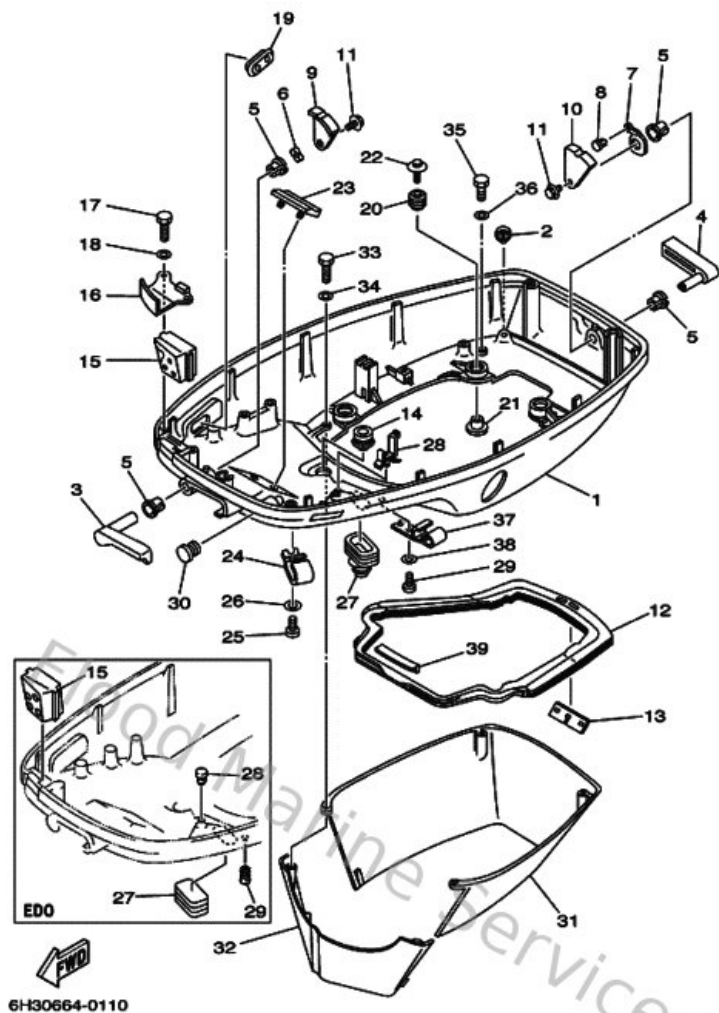
[www.floodmarine.co.uk](http://www.floodmarine.co.uk)  
+44 2882 246 539  
Authorised Yamaha Dealers



# Contents

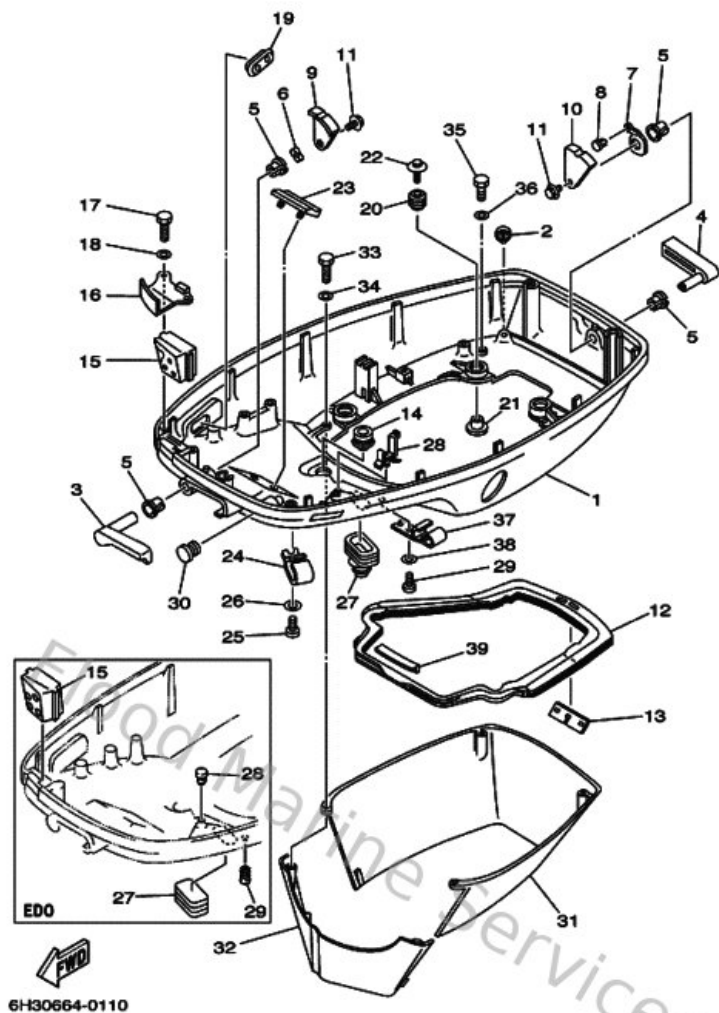
|                                   |    |
|-----------------------------------|----|
| <b>Bottom Cowling</b>             | 3  |
| <b>Bracket 2</b>                  | 6  |
| <b>Bracket 3</b>                  | 9  |
| <b>Bracket 4</b>                  | 10 |
| <b>Carburetor</b>                 | 13 |
| <b>Control</b>                    | 16 |
| <b>Crankshaft &amp; Piston</b>    | 19 |
| <b>Cylinder &amp; Crankcase</b>   | 21 |
| <b>Electrical 1</b>               | 24 |
| <b>Fuel</b>                       | 27 |
| <b>Fuel Tank</b>                  | 30 |
| <b>Generator</b>                  | 31 |
| <b>Intake</b>                     | 33 |
| <b>Lower Casing &amp; Drive 1</b> | 35 |
| <b>Lower Casing &amp; Drive 2</b> | 40 |
| <b>Meter</b>                      | 42 |
| <b>Oil Pump</b>                   | 43 |
| <b>Remote Control Assy 1</b>      | 47 |
| <b>Remote Control Box</b>         | 52 |
| <b>Repair Kit 1</b>               | 53 |
| <b>Repair Kit 2</b>               | 55 |
| <b>Starting Motor</b>             | 57 |
| <b>Steering Guide</b>             | 59 |
| <b>Top Cowling</b>                | 60 |
| <b>Upper Casing</b>               | 62 |

## Bottom Cowling



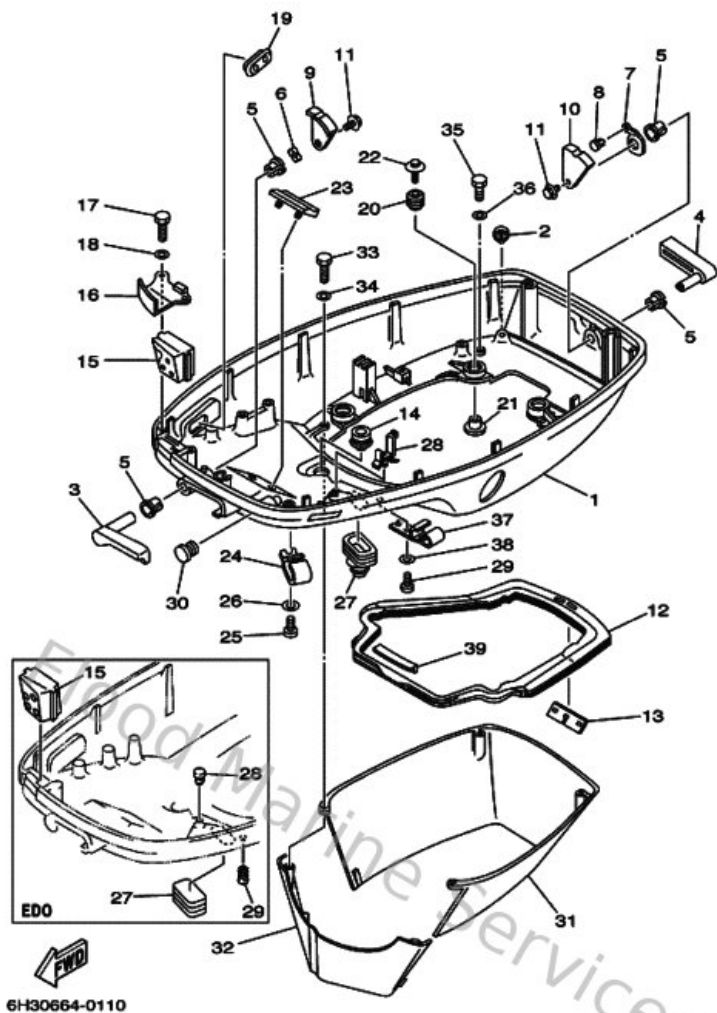
| Ref | Part  |                         |
|-----|---|-------------------------|
| 1   | <a href="#">6H342711054D</a><br>Cowling, bottom     | <a href="#">Buy now</a> |
| 2   | <a href="#">6H3443910100</a><br>Nipple, hose        | <a href="#">Buy now</a> |
| 3   | <a href="#">6H342815014D</a><br>Lever, clamp        | <a href="#">Buy now</a> |
| 4   | <a href="#">6H342817018D</a><br>Lever, clamp        | <a href="#">Buy now</a> |
| 5   | <a href="#">9038613M3800</a><br>Bushing (697)       | <a href="#">Buy now</a> |
| 6   | <a href="#">9020613M1000</a><br>Washer, wave (6e5)  | <a href="#">Buy now</a> |
| 7   | <a href="#">6H3428130000</a><br>Spring, clamp lever | <a href="#">Buy now</a> |
| 8   | <a href="#">9026904M0300</a><br>Rivet (6h3)         | <a href="#">Buy now</a> |
| 9   | <a href="#">6H3428160000</a><br>Lever, clamp 2      | <a href="#">Buy now</a> |
| 10  | <a href="#">6H3428180000</a><br>Lever, clamp 4      | <a href="#">Buy now</a> |
| 11  | <a href="#">9011906M0900</a><br>Bolt, with washer   | <a href="#">Buy now</a> |
| 12  | <a href="#">6H3427160200</a><br>Rubber, seal 1      | <a href="#">Buy now</a> |
| 13  | <a href="#">6K5427170000</a><br>Rubber, seal 2      | <a href="#">Buy now</a> |
| 14  | <a href="#">6E5427240000</a><br>Grommet             | <a href="#">Buy now</a> |
| 15  | <a href="#">6H3427250000</a><br>Grommet             | <a href="#">Buy now</a> |

## Bottom Cowling



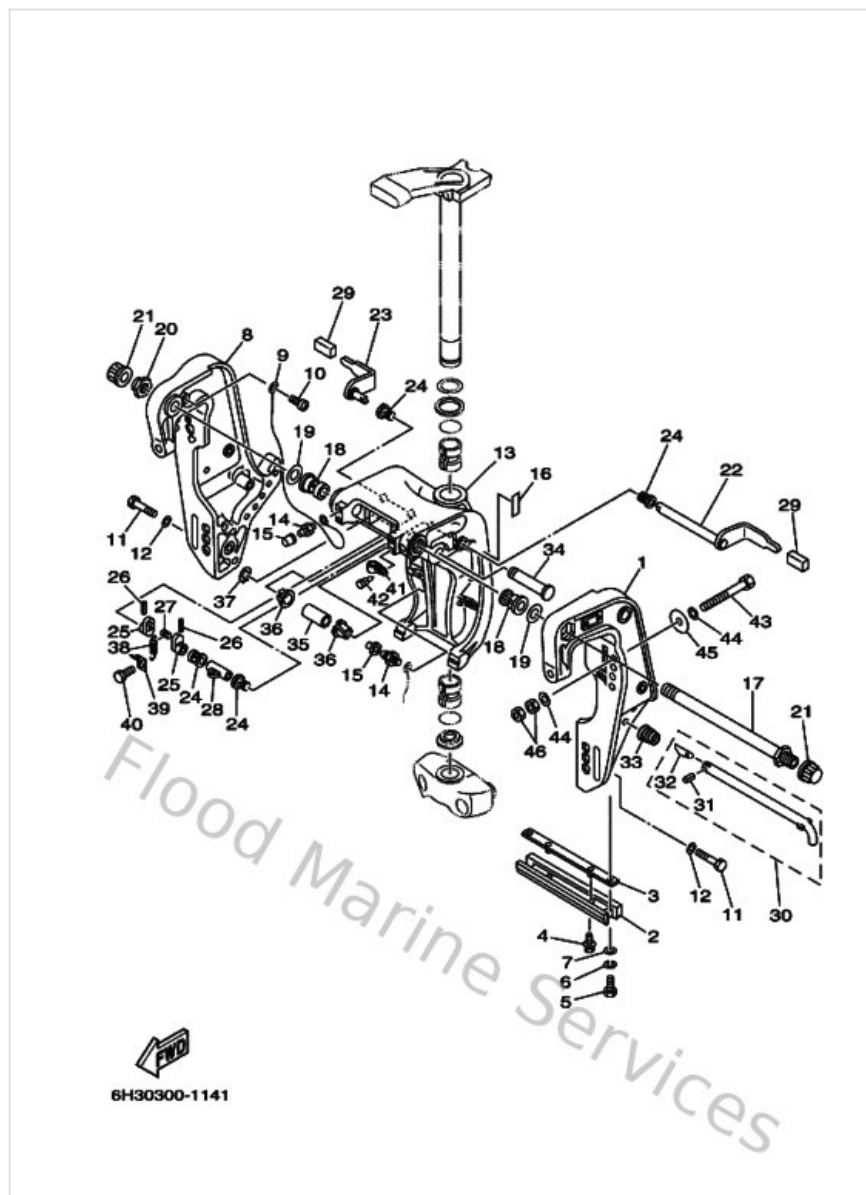
| Ref | Part  |                         |
|-----|---|-------------------------|
| 16  | <a href="#">6H342738015B</a><br>Plate, fitting            | <a href="#">Buy now</a> |
| 17  | <a href="#">970950601600</a><br>Bolt, hexagon deep recess | <a href="#">Buy now</a> |
| 18  | <a href="#">929950660000</a><br>Washer, plain (646)       | <a href="#">Buy now</a> |
| 19  | <a href="#">6H3427270000</a><br>Grommet                   | <a href="#">Buy now</a> |
| 20  | <a href="#">9048009M1200</a><br>Grommet (6a0)             | <a href="#">Buy now</a> |
| 21  | <a href="#">9038706M6900</a><br>Collar (688)              | <a href="#">Buy now</a> |
| 22  | <a href="#">9011906M6100</a><br>Bolt, with washer         | <a href="#">Buy now</a> |
| 23  | <a href="#">6H3427680000</a><br>Damper                    | <a href="#">Buy now</a> |
| 24  | <a href="#">6E5243670100</a><br>Clamp, fuel pipe 2        | <a href="#">Buy now</a> |
| 25  | <a href="#">9015706M0100</a><br>Screw (6e5)               | <a href="#">Buy now</a> |
| 26  | <a href="#">929900660000</a><br>Washer, plain (646)       | <a href="#">Buy now</a> |
| 27  | <a href="#">6H4427260000</a><br>Grommet                   | <a href="#">Buy now</a> |
| 28  | <a href="#">703821190000</a><br>Cover, lead wire          | <a href="#">Buy now</a> |
| 29  | <a href="#">9033805M0300</a><br>Plug (6h1)                | <a href="#">Buy now</a> |
| 30  | <a href="#">6G1427480000</a><br>Grommet                   | <a href="#">Buy now</a> |

## Bottom Cowling



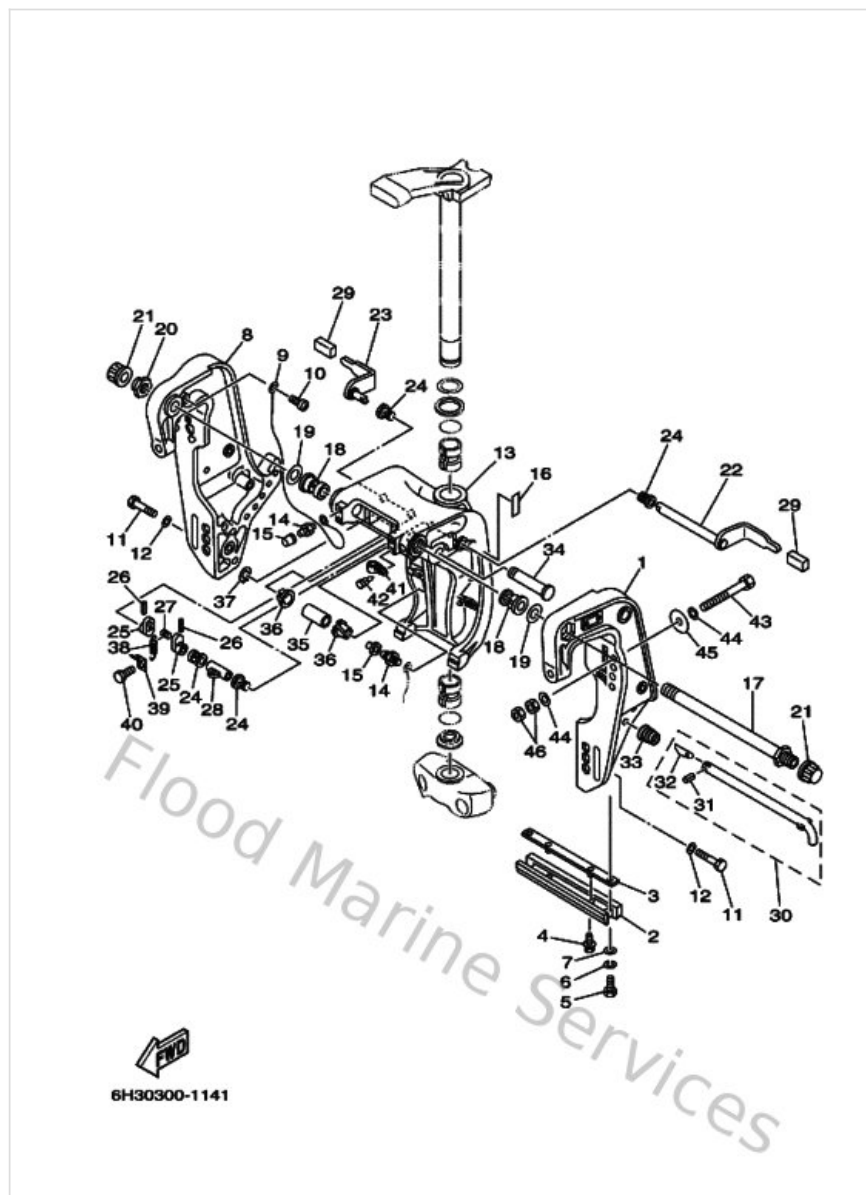
| Ref | Part   |                         |
|-----|--|-------------------------|
| 31  | <a href="#">6H342741014D</a><br>Apron          | <a href="#">Buy now</a> |
| 32  | <a href="#">6H342771014D</a><br>Apron          | <a href="#">Buy now</a> |
| 33  | <a href="#">970950602500</a><br>Bolt           | <a href="#">Buy now</a> |
| 35  | <a href="#">970950602000</a><br>Bolt(7u8)      | <a href="#">Buy now</a> |
| 39  | <a href="#">6H3427180000</a><br>Rubber, seal 3 | <a href="#">Buy now</a> |

## Bracket 2



| Ref | Part  |                         |
|-----|---|-------------------------|
| 1   | <a href="#">68843111134D</a><br>Bracket, clamp 1          | <a href="#">Buy now</a> |
| 2   | <a href="#">6H1452510300</a><br>Anode                     | <a href="#">Buy now</a> |
| 3   | <a href="#">6H1445260000</a><br>Plate 2                   | <a href="#">Buy now</a> |
| 4   | <a href="#">9011906M2900</a><br>Bolt, with washer         | <a href="#">Buy now</a> |
| 5   | <a href="#">970950601600</a><br>Bolt, hexagon deep recess | <a href="#">Buy now</a> |
| 6   | <a href="#">929950610000</a><br>Washer(6a1)               | <a href="#">Buy now</a> |
| 7   | <a href="#">929950660000</a><br>Washer, plain (646)       | <a href="#">Buy now</a> |
| 8   | <a href="#">68843112124D</a><br>Bracket, clamp 2          | <a href="#">Buy now</a> |
| 9   | <a href="#">6E5821480000</a><br>Wire, lead 5              | <a href="#">Buy now</a> |
| 10  | <a href="#">978850601200</a><br>Screw, pan head(62j)      | <a href="#">Buy now</a> |
| 11  | <a href="#">970951004500</a><br>Bolt(64d)                 | <a href="#">Buy now</a> |
| 12  | <a href="#">929951010000</a><br>Ybs67-10 washer, spring   | <a href="#">Buy now</a> |
| 13  | <a href="#">6H143311014D</a><br>Bracket, swivel 1         | <a href="#">Buy now</a> |
| 14  | <a href="#">9370006M0300</a><br>Nipple, grease(6a1)       | <a href="#">Buy now</a> |
| 15  | <a href="#">663451190000</a><br>Cap, grease nipple        | <a href="#">Buy now</a> |

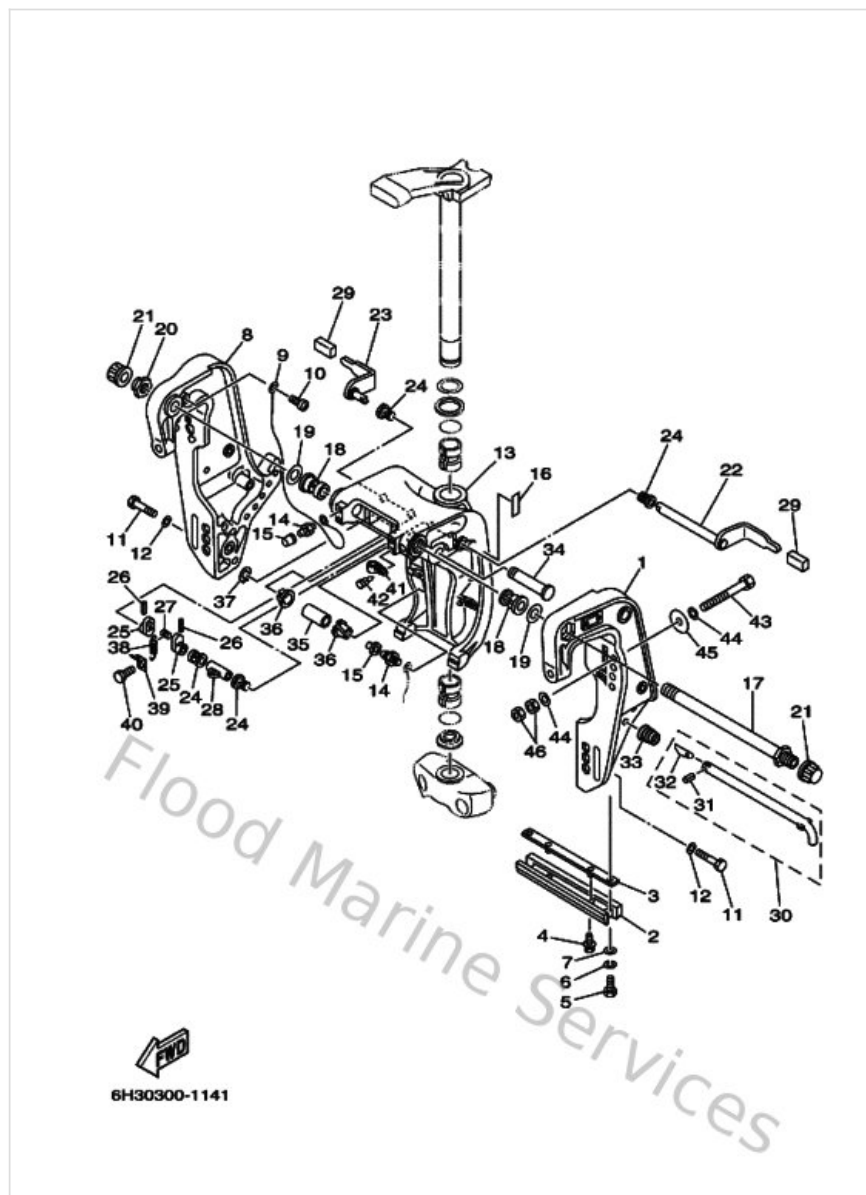
## Bracket 2



| Ref | Part  |                         |
|-----|---|-------------------------|
| 17  | <a href="#">688431310300</a><br>Bolt, clamp bracket | <a href="#">Buy now</a> |
| 18  | <a href="#">9038622M1500</a><br>Bushing (688)       | <a href="#">Buy now</a> |
| 19  | <a href="#">9020122M6700</a><br>Washer, plate (688) | <a href="#">Buy now</a> |
| 20  | <a href="#">901852204300</a><br>Nut, self-locking   | <a href="#">Buy now</a> |
| 21  | <a href="#">6G5431450100</a><br>Cap, clamp bracket  | <a href="#">Buy now</a> |
| 22  | <a href="#">688431811000</a><br>Lever, tilt stop 1  | <a href="#">Buy now</a> |
| 23  | <a href="#">688431851000</a><br>Lever, tilt stop 2  | <a href="#">Buy now</a> |
| 24  | <a href="#">9038610M1600</a><br>Bushing (688)       | <a href="#">Buy now</a> |
| 25  | <a href="#">6G5431480000</a><br>Collar, distance    | <a href="#">Buy now</a> |
| 26  | <a href="#">916903002000</a><br>Pin, spring (6h4)   | <a href="#">Buy now</a> |
| 27  | <a href="#">9024906M1900</a><br>Pin(6e5)            | <a href="#">Buy now</a> |
| 28  | <a href="#">9038710M0200</a><br>Collar(6e5)         | <a href="#">Buy now</a> |
| 29  | <a href="#">663433180000</a><br>Cover               | <a href="#">Buy now</a> |
| 30  | <a href="#">688431600100</a><br>Tilt rod ass'y      | <a href="#">Buy now</a> |
| 31  | <a href="#">916903001200</a><br>Pin, spring         | <a href="#">Buy now</a> |



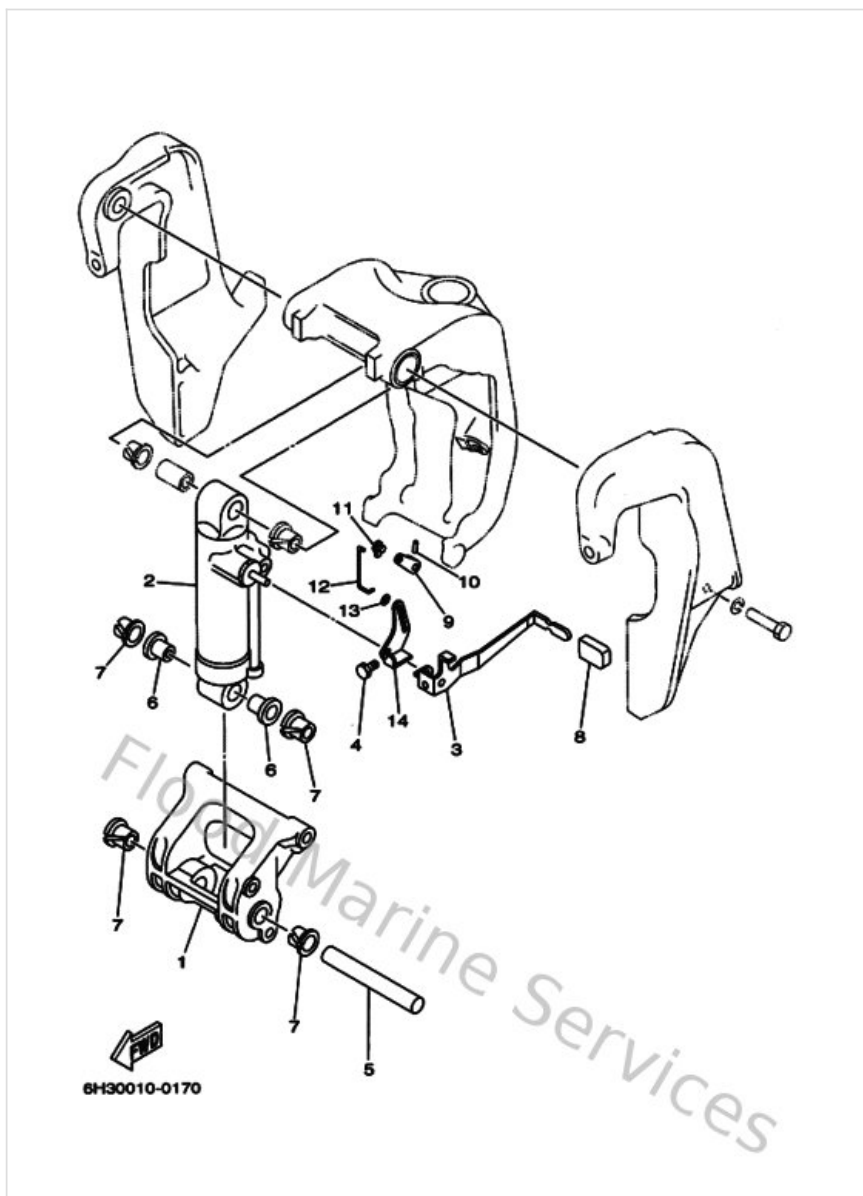
## Bracket 2



| Ref | Part   |                         |
|-----|--|-------------------------|
| 32  | <a href="#">688431650000</a><br>Stopper, tilt rod      | <a href="#">Buy now</a> |
| 33  | <a href="#">9050216M0200</a><br>Spring, conical (688)  | <a href="#">Buy now</a> |
| 34  | <a href="#">6E5431260200</a><br>Pin, upper shock mount | <a href="#">Buy now</a> |
| 35  | <a href="#">9038618M2100</a><br>Bushing (688)          | <a href="#">Buy now</a> |
| 36  | <a href="#">9038618M3500</a><br>Bush (688)             | <a href="#">Buy now</a> |
| 37  | <a href="#">9341018M0200</a><br>Circlip (6f2)          | <a href="#">Buy now</a> |
| 38  | <a href="#">9050614M2400</a><br>Spring, tension(6e5)   | <a href="#">Buy now</a> |
| 39  | <a href="#">6G5431440000</a><br>Hook, spring           | <a href="#">Buy now</a> |
| 40  | <a href="#">970950601000</a><br>Bolt                   | <a href="#">Buy now</a> |
| 41  | <a href="#">9046411M1800</a><br>Clamp(6e5)             | <a href="#">Buy now</a> |
| 42  | <a href="#">9033805M0300</a><br>Plug (6h1)             | <a href="#">Buy now</a> |
| 43  | <a href="#">9010112M6500</a><br>Bolt                   | <a href="#">Buy now</a> |
| 44  | <a href="#">929951220000</a><br>Ybs66-12 washer,plain  | <a href="#">Buy now</a> |
| 45  | <a href="#">902011242600</a><br>Washe, plate(663)      | <a href="#">Buy now</a> |
| 46  | <a href="#">953801260000</a><br>Nut (707)              | <a href="#">Buy now</a> |

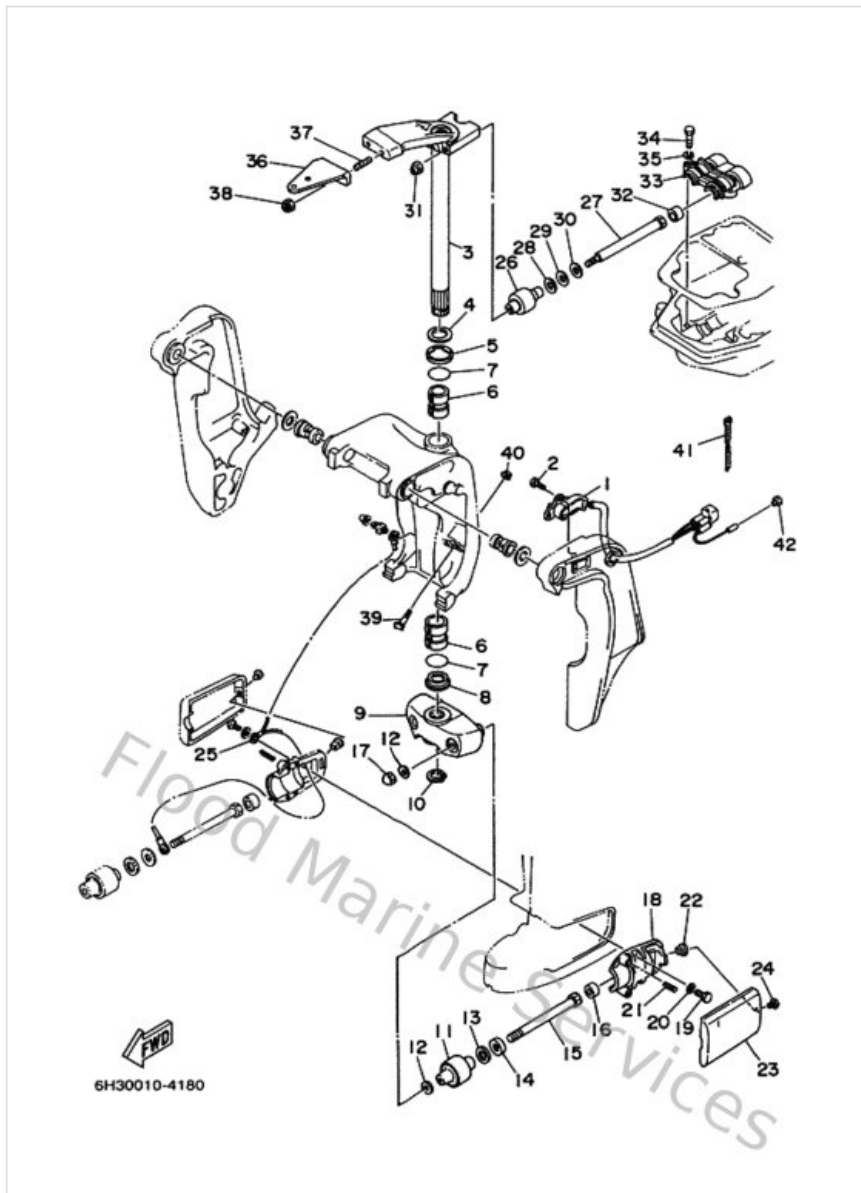


## Bracket 3



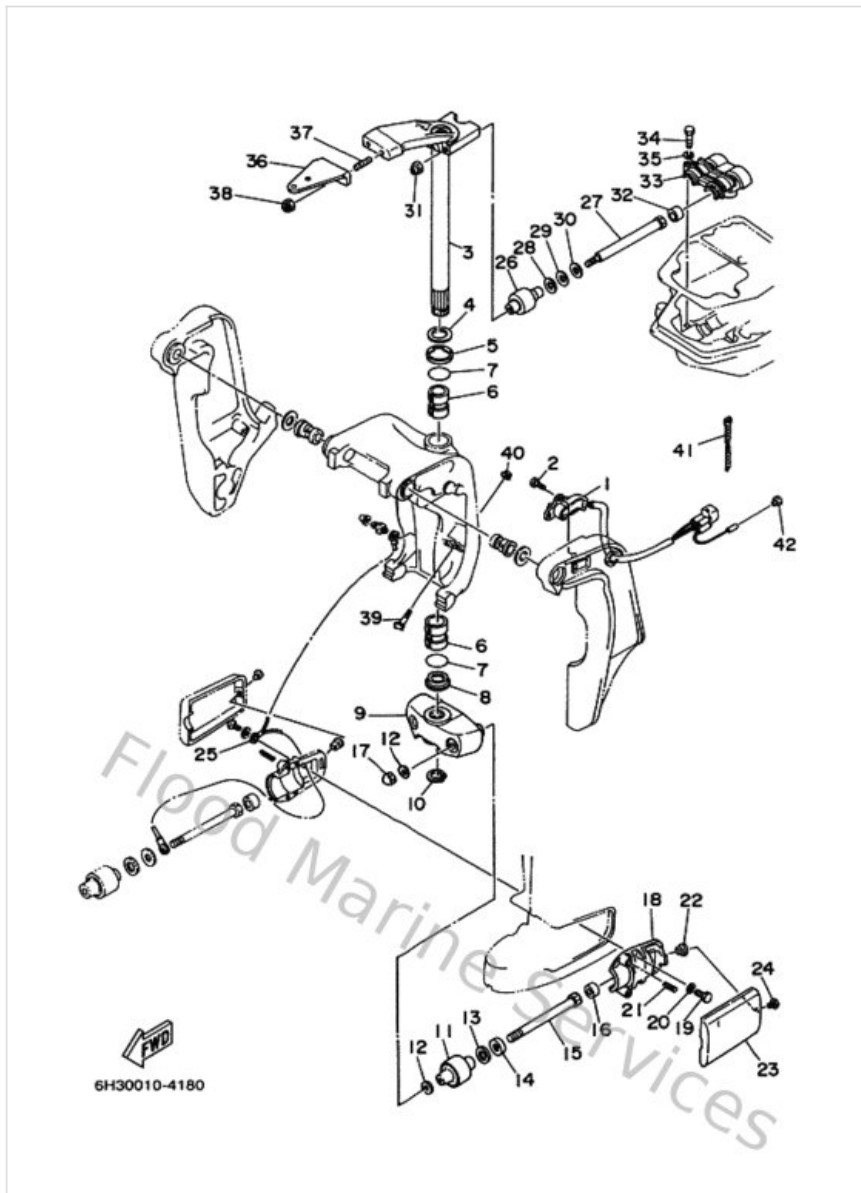
| Ref | Part  |                         |
|-----|---|-------------------------|
| 1   | <a href="#">68843128014D</a><br>Spacer, clamp bracket       | <a href="#">Buy now</a> |
| 2   | <a href="#">68843170044D</a><br>Shock absorber sub-assembly | <a href="#">Buy now</a> |
| 3   | <a href="#">688436311000</a><br>Lever, tilt                 | <a href="#">Buy now</a> |
| 4   | <a href="#">970800601000</a><br>Bolt                        | <a href="#">Buy now</a> |
| 5   | <a href="#">688431240200</a><br>Pin, lower shock mount      | <a href="#">Buy now</a> |
| 6   | <a href="#">9038618M6300</a><br>Bush(6e5)                   | <a href="#">Buy now</a> |
| 7   | <a href="#">9038618M3500</a><br>Bush (688)                  | <a href="#">Buy now</a> |
| 8   | <a href="#">682433180100</a><br>Cover                       | <a href="#">Buy now</a> |
| 9   | <a href="#">688431860000</a><br>Lever                       | <a href="#">Buy now</a> |
| 10  | <a href="#">916903002000</a><br>Pin, spring (6h4)           | <a href="#">Buy now</a> |
| 11  | <a href="#">6J8412620000</a><br>Joint, choke lever          | <a href="#">Buy now</a> |
| 12  | <a href="#">688436160000</a><br>Rod, tilt lock              | <a href="#">Buy now</a> |
| 13  | <a href="#">9020203M5100</a><br>Washer, plate(688)          | <a href="#">Buy now</a> |
| 14  | <a href="#">688436510000</a><br>Lever, reverse lock1        | <a href="#">Buy now</a> |

## Bracket 4



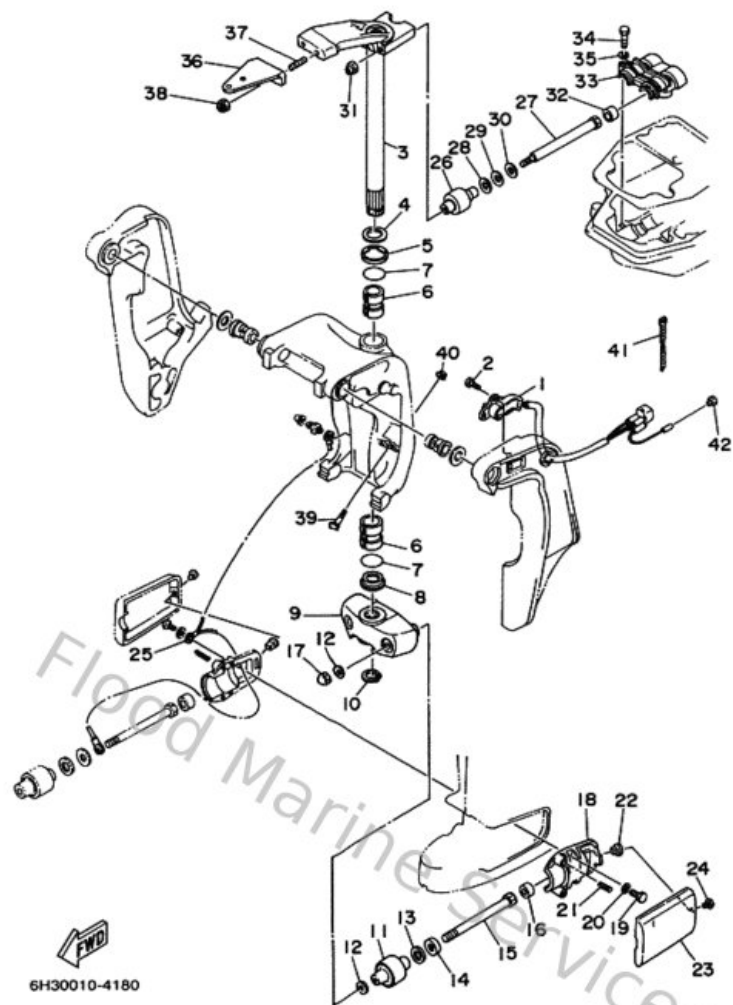
| Ref | Part  |                         |
|-----|---|-------------------------|
| 3   | <a href="#">6H342510124D</a><br>Steering bracket assembly     | <a href="#">Buy now</a> |
| 4   | <a href="#">9020130M0000</a><br>Washer, plate(6h1)            | <a href="#">Buy now</a> |
| 5   | <a href="#">9038630M7800</a><br>Bush(6h0)                     | <a href="#">Buy now</a> |
| 6   | <a href="#">9038630M7700</a><br>Bush(6h0)                     | <a href="#">Buy now</a> |
| 7   | <a href="#">9321029M9400</a><br>O-ring(6h1)                   | <a href="#">Buy now</a> |
| 8   | <a href="#">9038630M6000</a><br>Bush(6j8)                     | <a href="#">Buy now</a> |
| 9   | <a href="#">6H344551018D</a><br>Housing, lower mount rubber 1 | <a href="#">Buy now</a> |
| 10  | <a href="#">9341028M0600</a><br>Circlip (688)                 | <a href="#">Buy now</a> |
| 11  | <a href="#">687445550094</a><br>Mount damper, lower side      | <a href="#">Buy now</a> |
| 12  | <a href="#">9020112M1600</a><br>Washer, plate (679)           | <a href="#">Buy now</a> |
| 13  | <a href="#">9020225M0400</a><br>Washer, plate (663)           | <a href="#">Buy now</a> |
| 14  | <a href="#">9020113M1900</a><br>Washer, plate (663)           | <a href="#">Buy now</a> |
| 15  | <a href="#">9010912M2100</a><br>Bolt (6h3)                    | <a href="#">Buy now</a> |
| 16  | <a href="#">663445750000</a><br>Damper, lower mount rubber    | <a href="#">Buy now</a> |
| 17  | <a href="#">953801280000</a><br>Nut crown(663)                | <a href="#">Buy now</a> |

## Bracket 4



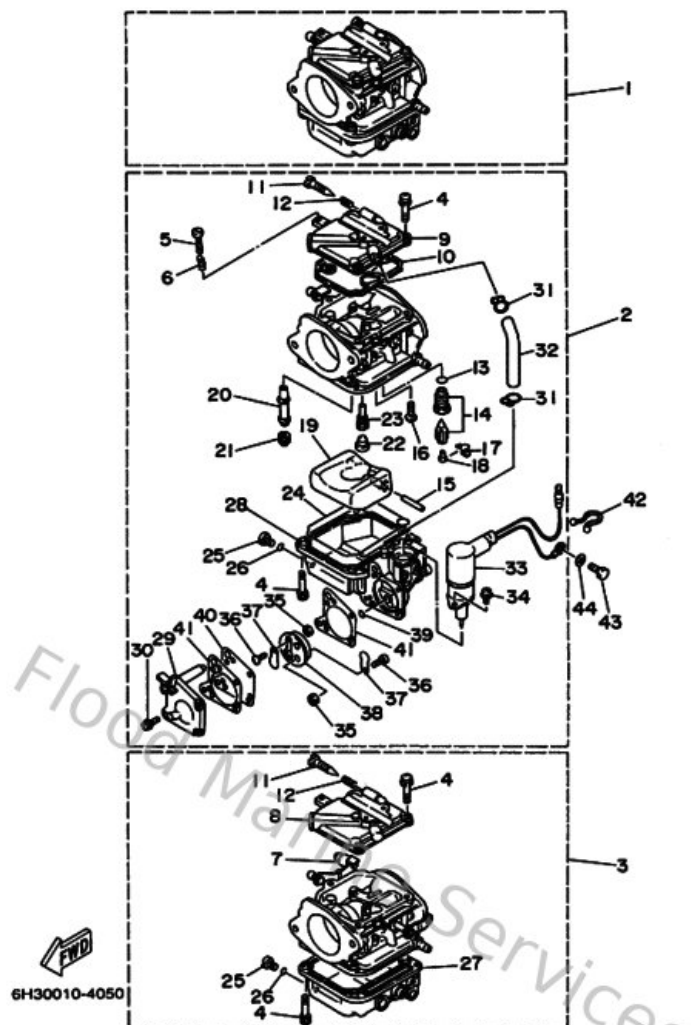
| Ref | Part  |                         |
|-----|---|-------------------------|
| 18  | <a href="#">6H3445520394</a><br>Housing, lower mount rubber | <a href="#">Buy now</a> |
| 19  | <a href="#">970750802500</a><br>Bolt, hexagon deep recess   | <a href="#">Buy now</a> |
| 20  | <a href="#">929900810000</a><br>Ybs67-8 washer, spring      | <a href="#">Buy now</a> |
| 21  | <a href="#">9050114M0800</a><br>Spring, compression(64j)    | <a href="#">Buy now</a> |
| 22  | <a href="#">901790606600</a><br>Nut(663)                    | <a href="#">Buy now</a> |
| 23  | <a href="#">6H344553014D</a><br>Cover, lower mount          | <a href="#">Buy now</a> |
| 24  | <a href="#">901570600900</a><br>Screw, pan head(6b0)        | <a href="#">Buy now</a> |
| 25  | <a href="#">688821270200</a><br>Wire, lead 2                | <a href="#">Buy now</a> |
| 26  | <a href="#">688445140094</a><br>Mount damper, upper side    | <a href="#">Buy now</a> |
| 27  | <a href="#">9010110M4900</a><br>Bolt                        | <a href="#">Buy now</a> |
| 28  | <a href="#">9020120M2100</a><br>Washer, plate (688)         | <a href="#">Buy now</a> |
| 29  | <a href="#">9020220M0600</a><br>Washer, plate (688)         | <a href="#">Buy now</a> |
| 30  | <a href="#">9020111M2200</a><br>Washer, plate (688)         | <a href="#">Buy now</a> |
| 31  | <a href="#">901851005100</a><br>Nut, self-locking           | <a href="#">Buy now</a> |
| 33  | <a href="#">688445110000</a><br>Cover, upper mount          | <a href="#">Buy now</a> |

## Bracket 4



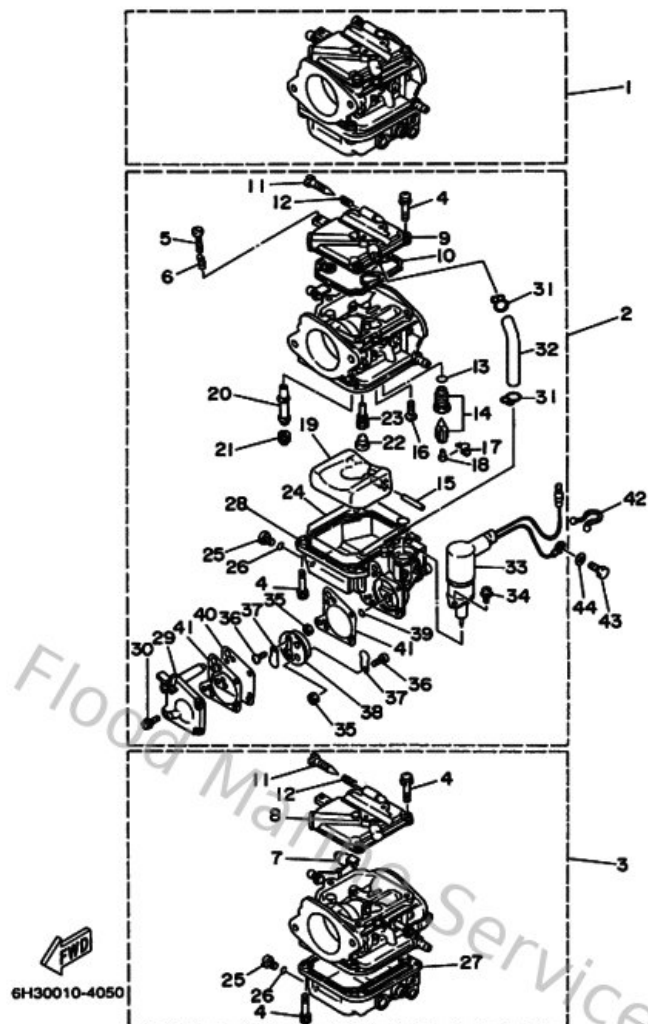
| Ref | Part   |                         |
|-----|--|-------------------------|
| 34  | <a href="#">970750803500</a><br>Bolt(70w)              | <a href="#">Buy now</a> |
| 35  | <a href="#">929950810000</a><br>Ybs67-8 washer, spring | <a href="#">Buy now</a> |
| 36  | <a href="#">6H3485115200</a><br>Hook, steering         | <a href="#">Buy now</a> |
| 37  | <a href="#">901161017500</a><br>Bolt, stud             | <a href="#">Buy now</a> |

# Carburetor



| Ref | Part   |                         |
|-----|--|-------------------------|
| 1   | <a href="#">6H3143010A00</a><br>Carburetor assembly 1  | <a href="#">Buy now</a> |
| 2   | <a href="#">6H3143020A00</a><br>Carburetor assembly 2  | <a href="#">Buy now</a> |
| 3   | <a href="#">6H3143030A00</a><br>Carburetor assembly 3  | <a href="#">Buy now</a> |
| 4   | <a href="#">979800411400</a><br>Screw, pan head(ga5)   | <a href="#">Buy now</a> |
| 5   | <a href="#">63V145230000</a><br>Screw, stop            | <a href="#">Buy now</a> |
| 6   | <a href="#">905011032600</a><br>Spring coil(663)(carb) | <a href="#">Buy now</a> |
| 7   | <a href="#">6H2145780000</a><br>Collar                 | <a href="#">Buy now</a> |
| 8   | <a href="#">6H4141460000</a><br>Plate                  | <a href="#">Buy now</a> |
| 9   | <a href="#">6H3141461000</a><br>Plate                  | <a href="#">Buy now</a> |
| 10  | <a href="#">6H4141470000</a><br>O-ring                 | <a href="#">Buy now</a> |
| 11  | <a href="#">692149230000</a><br>Screw, adjusting       | <a href="#">Buy now</a> |
| 12  | <a href="#">697145550000</a><br>Spring                 | <a href="#">Buy now</a> |
| 13  | <a href="#">932100422800</a><br>O-ring (371)           | <a href="#">Buy now</a> |
| 14  | <a href="#">6H3145900000</a><br>Needle valve assembly  | <a href="#">Buy now</a> |
| 15  | <a href="#">6H4145480000</a><br>Pin, float arm         | <a href="#">Buy now</a> |

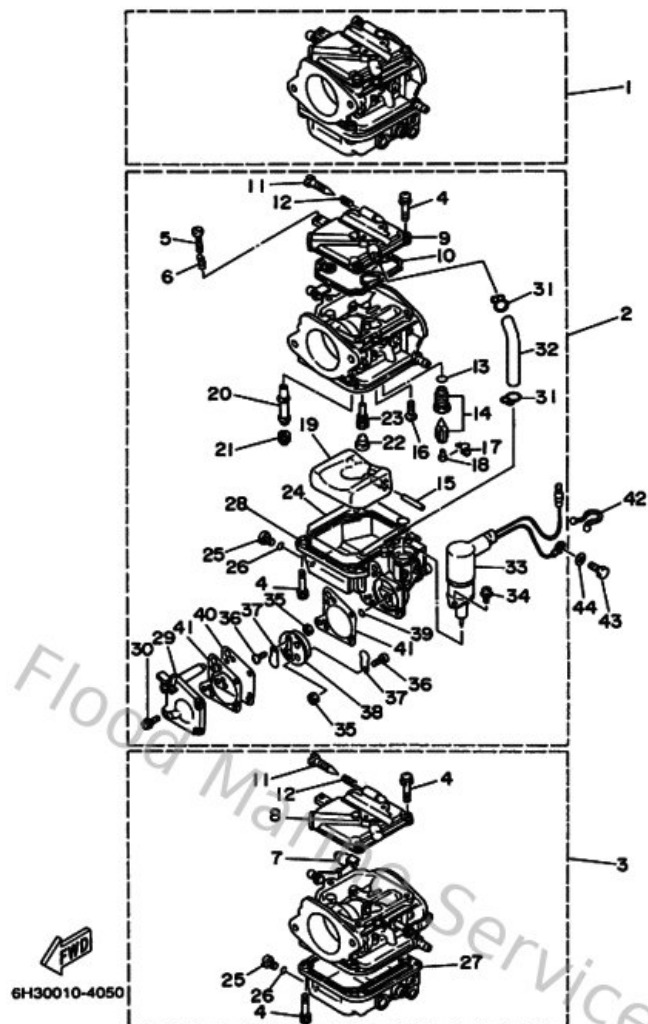
# Carburetor



| Ref | Part  |                         |
|-----|---|-------------------------|
| 16  | <a href="#">985800400800</a><br>Screw, pan head (713) | <a href="#">Buy now</a> |
| 17  | <a href="#">663141590000</a><br>Clip                  | <a href="#">Buy now</a> |
| 18  | <a href="#">676141860000</a><br>Pin, valve            | <a href="#">Buy now</a> |
| 19  | <a href="#">6H4149850100</a><br>Float                 | <a href="#">Buy now</a> |
| 20  | <a href="#">6H3149477100</a><br>Jet, needle           | <a href="#">Buy now</a> |
| 21  | <a href="#">6H3149433700</a><br>Jet, main (#150)      | <a href="#">Buy now</a> |
| 22  | <a href="#">676149660000</a><br>Rubber cap            | <a href="#">Buy now</a> |
| 23  | <a href="#">6H3149481700</a><br>Jet (#75)             | <a href="#">Buy now</a> |
| 24  | <a href="#">6H4149840000</a><br>Gasket, float chamber | <a href="#">Buy now</a> |
| 25  | <a href="#">6H3149920000</a><br>Screw, drain          | <a href="#">Buy now</a> |
| 26  | <a href="#">932100423000</a><br>O-ring (371)          | <a href="#">Buy now</a> |
| 27  | <a href="#">6H4149800000</a><br>Body, float chamber   | <a href="#">Buy now</a> |
| 28  | <a href="#">6H3149801000</a><br>Body, float chamber   | <a href="#">Buy now</a> |
| 29  | <a href="#">6H3244521000</a><br>Cover                 | <a href="#">Buy now</a> |
| 30  | <a href="#">6H4145670000</a><br>Screw                 | <a href="#">Buy now</a> |



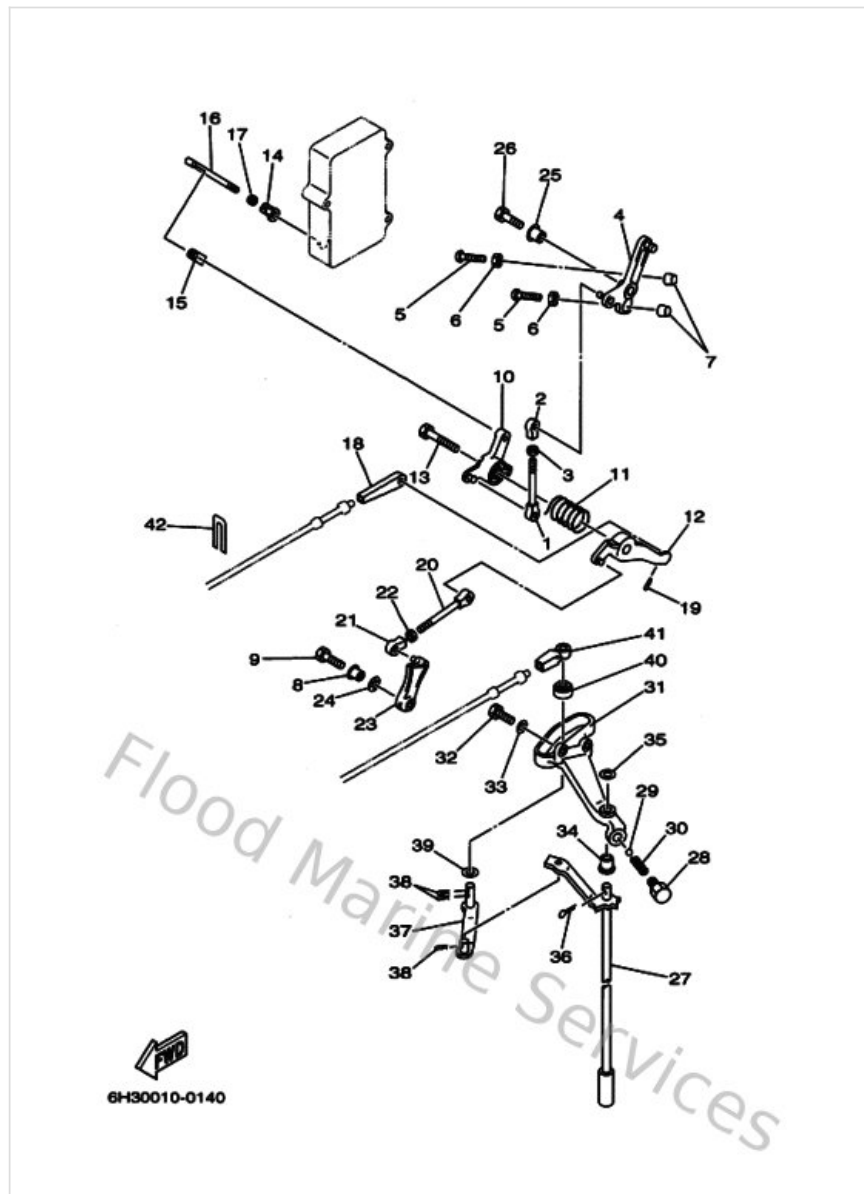
# Carburetor



| Ref | Part   |                         |
|-----|--|-------------------------|
| 31  | <a href="#">6H3141370000</a><br>Clip                   | <a href="#">Buy now</a> |
| 32  | <a href="#">6H3143490000</a><br>Pipe                   | <a href="#">Buy now</a> |
| 33  | <a href="#">6H3143800000</a><br>Prime starter assembly | <a href="#">Buy now</a> |
| 34  | <a href="#">978030401000</a><br>Screw, pan head (e56)  | <a href="#">Buy now</a> |
| 35  | <a href="#">953800360000</a><br>Nut (6g8)              | <a href="#">Buy now</a> |
| 36  | <a href="#">989800300600</a><br>Screw, bind(6g1)       | <a href="#">Buy now</a> |
| 37  | <a href="#">6L5244210000</a><br>Valve, check           | <a href="#">Buy now</a> |
| 38  | <a href="#">6H4244130000</a><br>Body 2                 | <a href="#">Buy now</a> |
| 39  | <a href="#">6H4244860000</a><br>O-ring                 | <a href="#">Buy now</a> |
| 40  | <a href="#">6H3244111000</a><br>Diaphragm              | <a href="#">Buy now</a> |
| 41  | <a href="#">6H3244341000</a><br>Gasket, body           | <a href="#">Buy now</a> |
| 42  | <a href="#">904651814700</a><br>Clamp                  | <a href="#">Buy now</a> |
| 43  | <a href="#">970130601200</a><br>Bolt(gh1)              | <a href="#">Buy now</a> |
| 44  | <a href="#">929030660000</a><br>Washer, plain (646)    | <a href="#">Buy now</a> |

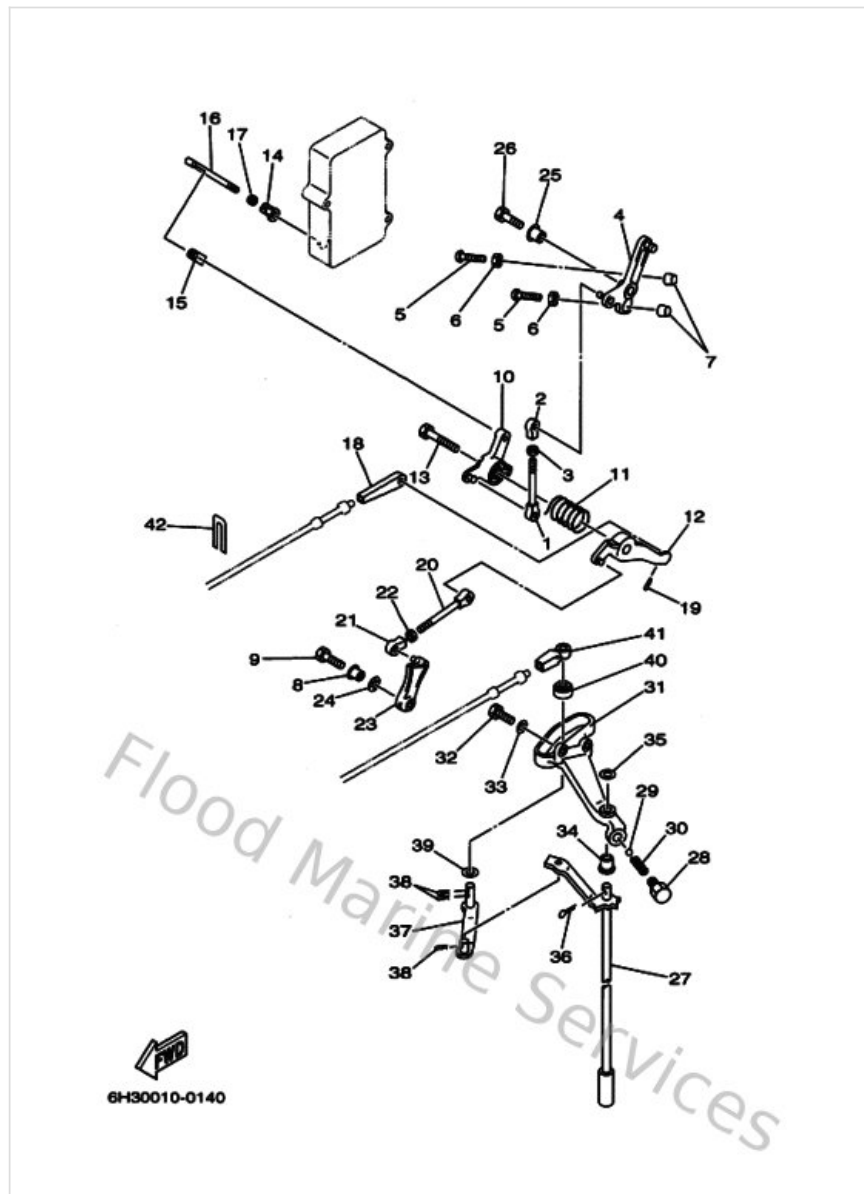


# Control



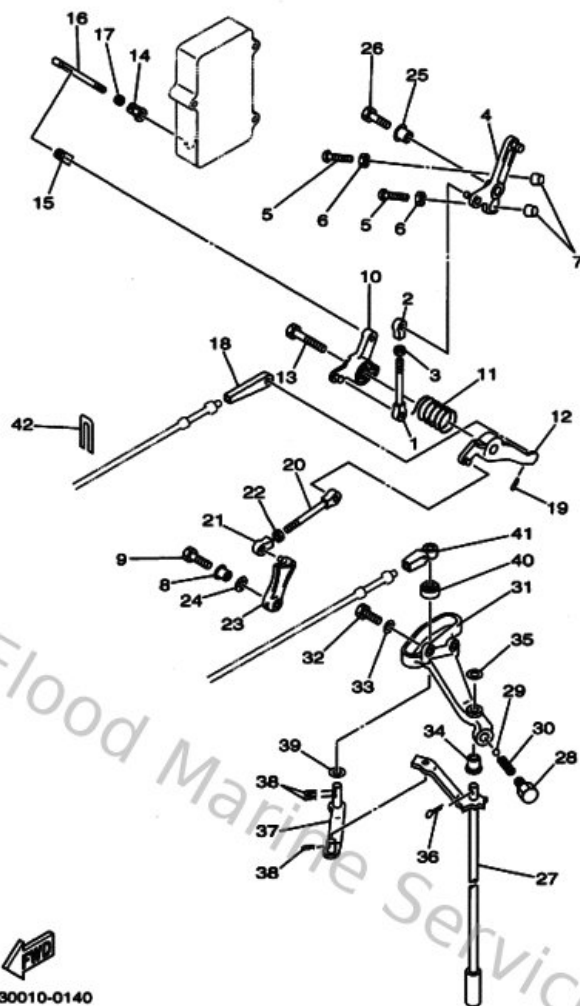
| Ref | Part   |                         |
|-----|--|-------------------------|
| 1   | <a href="#">689421690100</a><br>Joint                    | <a href="#">Buy now</a> |
| 2   | <a href="#">682412370000</a><br>Joint, link 2            | <a href="#">Buy now</a> |
| 3   | <a href="#">953800560000</a><br>Nut, hexagon (663)       | <a href="#">Buy now</a> |
| 4   | <a href="#">6H3416310000</a><br>Lever, magneto control 1 | <a href="#">Buy now</a> |
| 5   | <a href="#">9015706M1300</a><br>Screw, pan head(6h4)     | <a href="#">Buy now</a> |
| 6   | <a href="#">953800660000</a><br>Nut(661)                 | <a href="#">Buy now</a> |
| 7   | <a href="#">688441940000</a><br>Cap                      | <a href="#">Buy now</a> |
| 8   | <a href="#">9038706M6000</a><br>Collar (6h3)             | <a href="#">Buy now</a> |
| 9   | <a href="#">970950602500</a><br>Bolt                     | <a href="#">Buy now</a> |
| 10  | <a href="#">6H3416322000</a><br>Lever, magneto control   | <a href="#">Buy now</a> |
| 11  | <a href="#">905082611700</a><br>Spring, torsion          | <a href="#">Buy now</a> |
| 12  | <a href="#">6H3416331000</a><br>Lever, magneto control   | <a href="#">Buy now</a> |
| 13  | <a href="#">9010906M4300</a><br>Bolt(6h4)                | <a href="#">Buy now</a> |
| 14  | <a href="#">6H1412370000</a><br>Joint, link              | <a href="#">Buy now</a> |
| 15  | <a href="#">6F5412370000</a><br>Joint, link              | <a href="#">Buy now</a> |

## Control



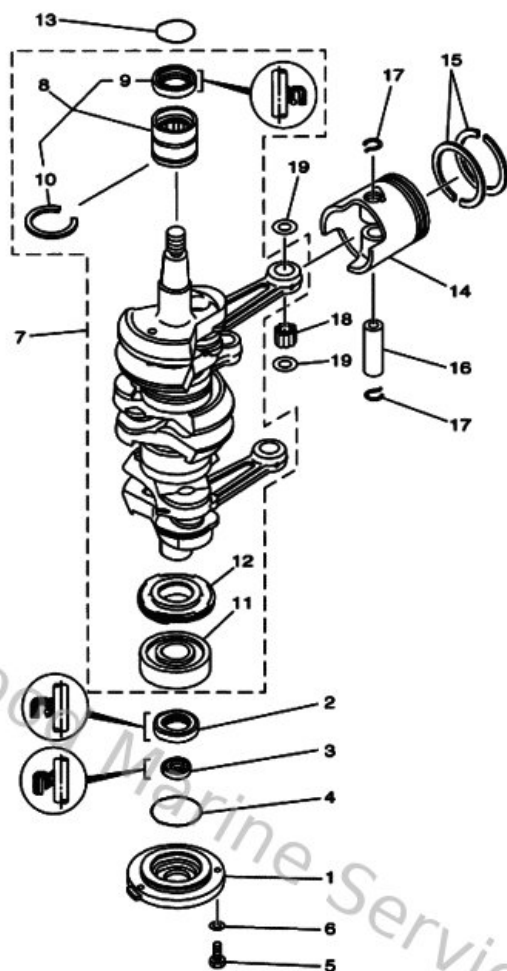
| Ref | Part   |                         |
|-----|--|-------------------------|
| 16  | <a href="#">6H3416361000</a><br>Rod, Magneto Control       | <a href="#">Buy now</a> |
| 18  | <a href="#">6H3483440000</a><br>Cable end, remote control  | <a href="#">Buy now</a> |
| 19  | <a href="#">904681800800</a><br>Clip 620436610000          | <a href="#">Buy now</a> |
| 21  | <a href="#">6H4412370000</a><br>Joint, link                | <a href="#">Buy now</a> |
| 23  | <a href="#">6H3412131000</a><br>Cam, accel.                | <a href="#">Buy now</a> |
| 24  | <a href="#">9020610M0400</a><br>Washer, wave (676)         | <a href="#">Buy now</a> |
| 27  | <a href="#">6H3441201300</a><br>Handle gear shift assembly | <a href="#">Buy now</a> |
| 28  | <a href="#">648427150000</a><br>Bushing 2                  | <a href="#">Buy now</a> |
| 29  | <a href="#">9350104M0200</a><br>Ball (697)                 | <a href="#">Buy now</a> |
| 30  | <a href="#">905011208200</a><br>Spring 6484411600          | <a href="#">Buy now</a> |
| 31  | <a href="#">6H3441170094</a><br>Bracket 1                  | <a href="#">Buy now</a> |
| 32  | <a href="#">970130602000</a><br>Bolt(62y)                  | <a href="#">Buy now</a> |
| 33  | <a href="#">929900660000</a><br>Washer, plain (646)        | <a href="#">Buy now</a> |
| 34  | <a href="#">9038607M5800</a><br>Bush(6h1)                  | <a href="#">Buy now</a> |
| 35  | <a href="#">929900820000</a><br>Ybs66-8 washer, plain      | <a href="#">Buy now</a> |

# Control



| Ref | Part  |                         |
|-----|---|-------------------------|
| 36  | <a href="#">914902001200</a><br>Pin, cotter (648)         | <a href="#">Buy now</a> |
| 37  | <a href="#">6H3441210100</a><br>Lever, shift rod          | <a href="#">Buy now</a> |
| 39  | <a href="#">9020207M0700</a><br>Washer, plate (688)       | <a href="#">Buy now</a> |
| 40  | <a href="#">688441220000</a><br>Bushing, shift rod lever  | <a href="#">Buy now</a> |
| 41  | <a href="#">663483440000</a><br>Cable end, remote control | <a href="#">Buy now</a> |
| 42  | <a href="#">6H3485380000</a><br>Clamp, cable              | <a href="#">Buy now</a> |

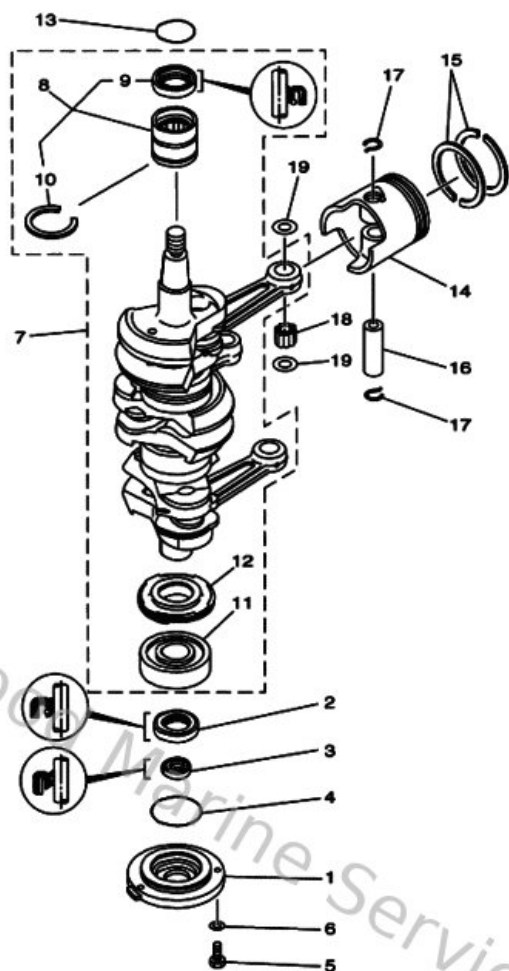
## Crankshaft & Piston



6H30010-9030

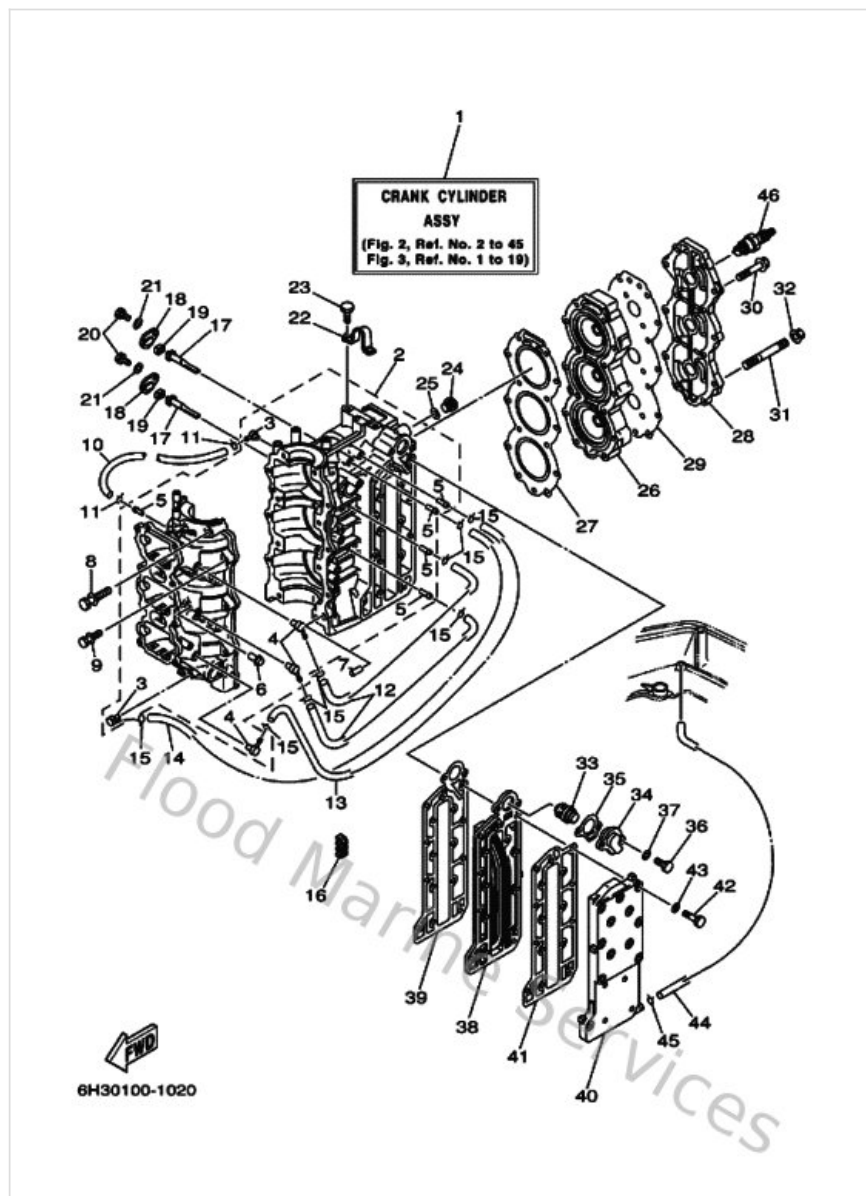
| Ref | Part  |                         |
|-----|---|-------------------------|
| 1   | <a href="#">6H3153590094</a><br>Housing, oil seal         | <a href="#">Buy now</a> |
| 2   | <a href="#">9310230M2300</a><br>Oil seal (6h3)            | <a href="#">Buy now</a> |
| 3   | <a href="#">9310618M0100</a><br>Oil seal (6h3)            | <a href="#">Buy now</a> |
| 4   | <a href="#">9321065M5000</a><br>O-ring                    | <a href="#">Buy now</a> |
| 5   | <a href="#">970950602000</a><br>Bolt(7u8)                 | <a href="#">Buy now</a> |
| 6   | <a href="#">929900660000</a><br>Washer, plain (646)       | <a href="#">Buy now</a> |
| 7   | <a href="#">6H3114001100</a><br>Crankshaft assembly       | <a href="#">Buy now</a> |
| 8   | <a href="#">93311636U600</a><br>Bearing, needle (6h3)     | <a href="#">Buy now</a> |
| 9   | <a href="#">9310236M2400</a><br>Oil seal(52w)             | <a href="#">Buy now</a> |
| 10  | <a href="#">9344049M0400</a><br>Circlip (6h3)             | <a href="#">Buy now</a> |
| 11  | <a href="#">93306306V100</a><br>Bearing(6h2)              | <a href="#">Buy now</a> |
| 13  | <a href="#">9321046M1600</a><br>O-ring (688)              | <a href="#">Buy now</a> |
| 14  | <a href="#">6H3116310196</a><br>Piston (std)              | <a href="#">Buy now</a> |
| 15  | <a href="#">6K5116012200</a><br>Piston ring set (2nd o/s) | <a href="#">Buy now</a> |
| 16  | <a href="#">6H3116330000</a><br>Pin, piston               | <a href="#">Buy now</a> |

## Crankshaft & Piston



| Ref | Part   |                         |
|-----|--|-------------------------|
| 17  | <a href="#">688116341000</a><br>Clip, piston pin   | <a href="#">Buy now</a> |
| 18  | <a href="#">9360318M0900</a><br>Pin, dowel b (6h3) | <a href="#">Buy now</a> |
| 19  | <a href="#">902012041700</a><br>Washer, plate(663) | <a href="#">Buy now</a> |

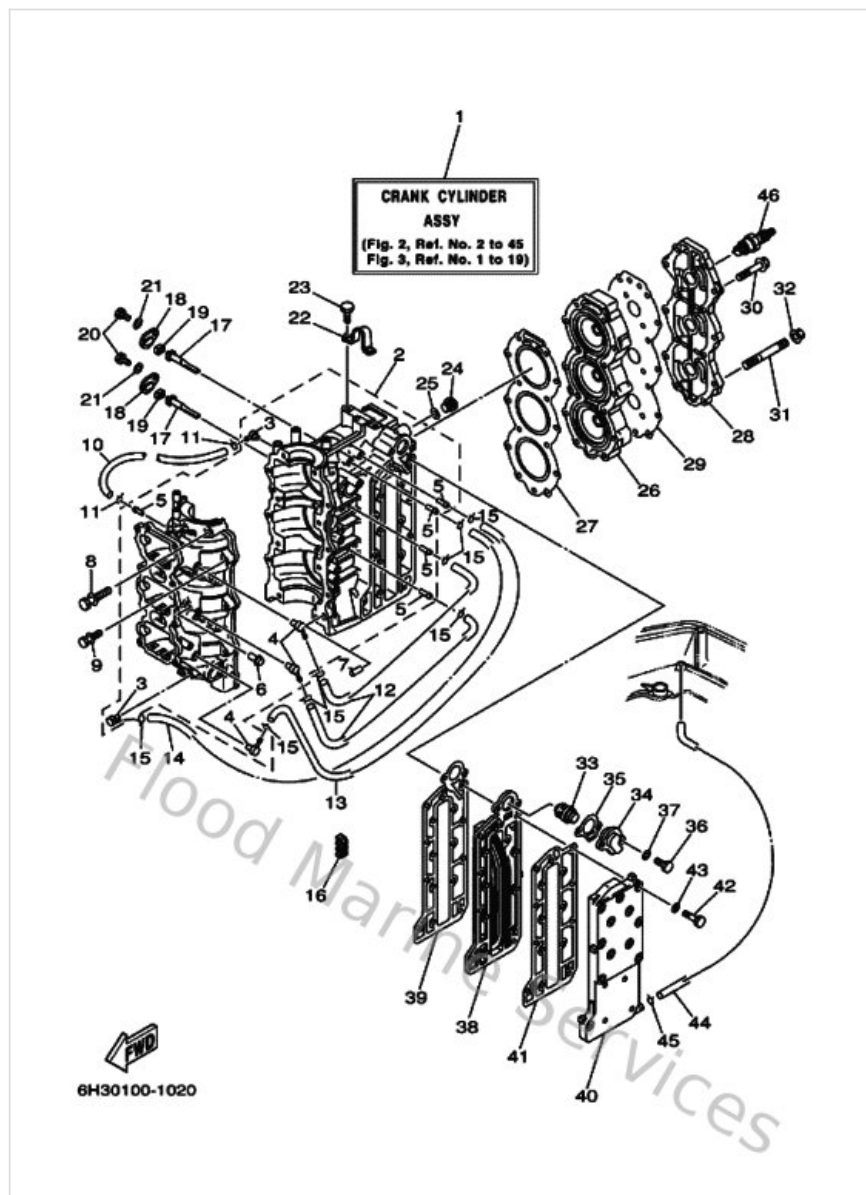
# Cylinder & Crankcase



| Ref | Part  |                         |
|-----|---|-------------------------|
| 1   | <a href="#">6H3W0090441S</a><br>Crank cylinder assembly | <a href="#">Buy now</a> |
| 2   | <a href="#">6H315100141S</a><br>Crankcase assembly      | <a href="#">Buy now</a> |
| 3   | <a href="#">688113700000</a><br>Check valve assembly    | <a href="#">Buy now</a> |
| 4   | <a href="#">650113700000</a><br>Check valve assembly    | <a href="#">Buy now</a> |
| 5   | <a href="#">624144850000</a><br>Pipe, joint             | <a href="#">Buy now</a> |
| 6   | <a href="#">6EEF43770000</a><br>Pipe, joint 2           | <a href="#">Buy now</a> |
| 7   | <a href="#">936081206300</a><br>Pin, dowel (626)        | <a href="#">Buy now</a> |
| 8   | <a href="#">9011910M0700</a><br>Bolt (6f5)              | <a href="#">Buy now</a> |
| 10  | <a href="#">9044507M4400</a><br>Hose (I390)             | <a href="#">Buy now</a> |
| 11  | <a href="#">904670601600</a><br>Clip (655)              | <a href="#">Buy now</a> |
| 12  | <a href="#">9044507M0200</a><br>Hose (I200)             | <a href="#">Buy now</a> |
| 13  | <a href="#">9044507M9000</a><br>Hose (I390)             | <a href="#">Buy now</a> |
| 14  | <a href="#">9044507M8200</a><br>Hose (I770)             | <a href="#">Buy now</a> |
| 16  | <a href="#">9046407M0500</a><br>Clamp (6g5)             | <a href="#">Buy now</a> |
| 17  | <a href="#">6H3113250100</a><br>Anode                   | <a href="#">Buy now</a> |



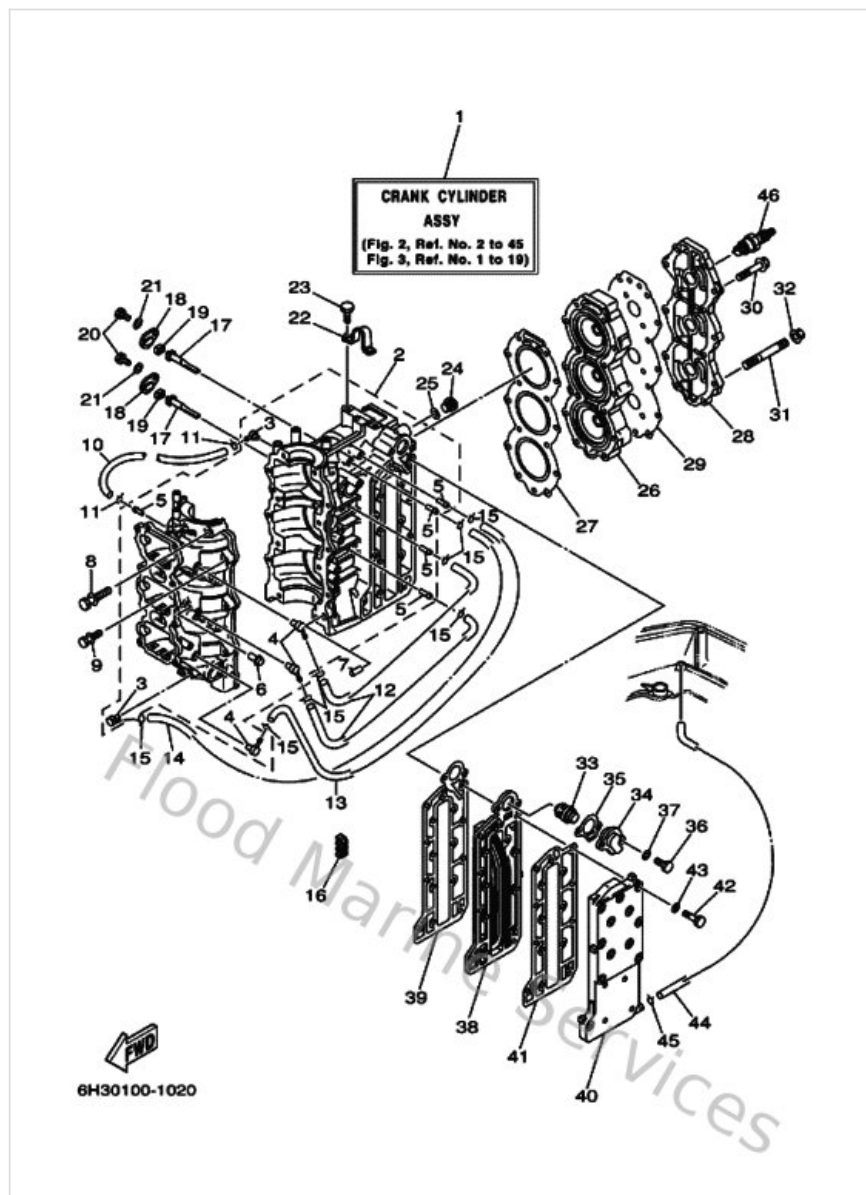
## Cylinder & Crankcase



| Ref | Part  |                         |
|-----|---|-------------------------|
| 18  | <a href="#">6H3113270094</a><br>Cover, anode              | <a href="#">Buy now</a> |
| 19  | <a href="#">6H3113280000</a><br>Grommet, anode            | <a href="#">Buy now</a> |
| 20  | <a href="#">970140601600</a><br>Bolt, hexagon deep recess | <a href="#">Buy now</a> |
| 21  | <a href="#">929030660000</a><br>Washer, plain (646)       | <a href="#">Buy now</a> |
| 22  | <a href="#">688111190000</a><br>Hanger, engine            | <a href="#">Buy now</a> |
| 23  | <a href="#">970130802000</a><br>Bolt(6td)                 | <a href="#">Buy now</a> |
| 24  | <a href="#">9034014M0600</a><br>Plug, straight screw(62y) | <a href="#">Buy now</a> |
| 25  | <a href="#">904301411500</a><br>Gasket (663)              | <a href="#">Buy now</a> |
| 26  | <a href="#">6H3111110194</a><br>Head, cylinder 1          | <a href="#">Buy now</a> |
| 27  | <a href="#">6H311181A100</a><br>Gasket, cylinder head 1   | <a href="#">Buy now</a> |
| 28  | <a href="#">6H311191009M</a><br>Cover, cylinder head 1    | <a href="#">Buy now</a> |
| 29  | <a href="#">6H311193A100</a><br>Gasket, head cover 1      | <a href="#">Buy now</a> |
| 30  | <a href="#">9011908M0900</a><br>Bolt (6f5)                | <a href="#">Buy now</a> |
| 31  | <a href="#">9011608M6900</a><br>Bolt, stud                | <a href="#">Buy now</a> |
| 32  | <a href="#">9017908M3400</a><br>Nut                       | <a href="#">Buy now</a> |

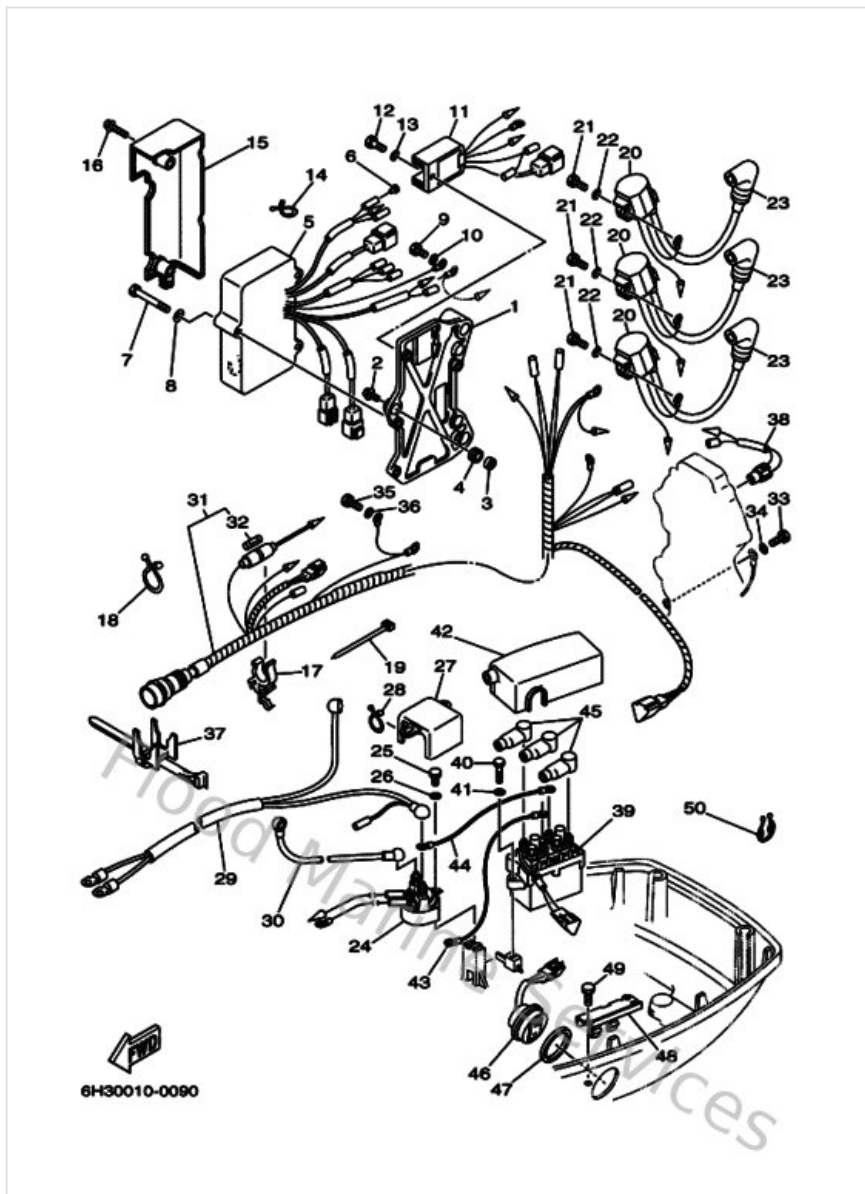


## Cylinder & Crankcase



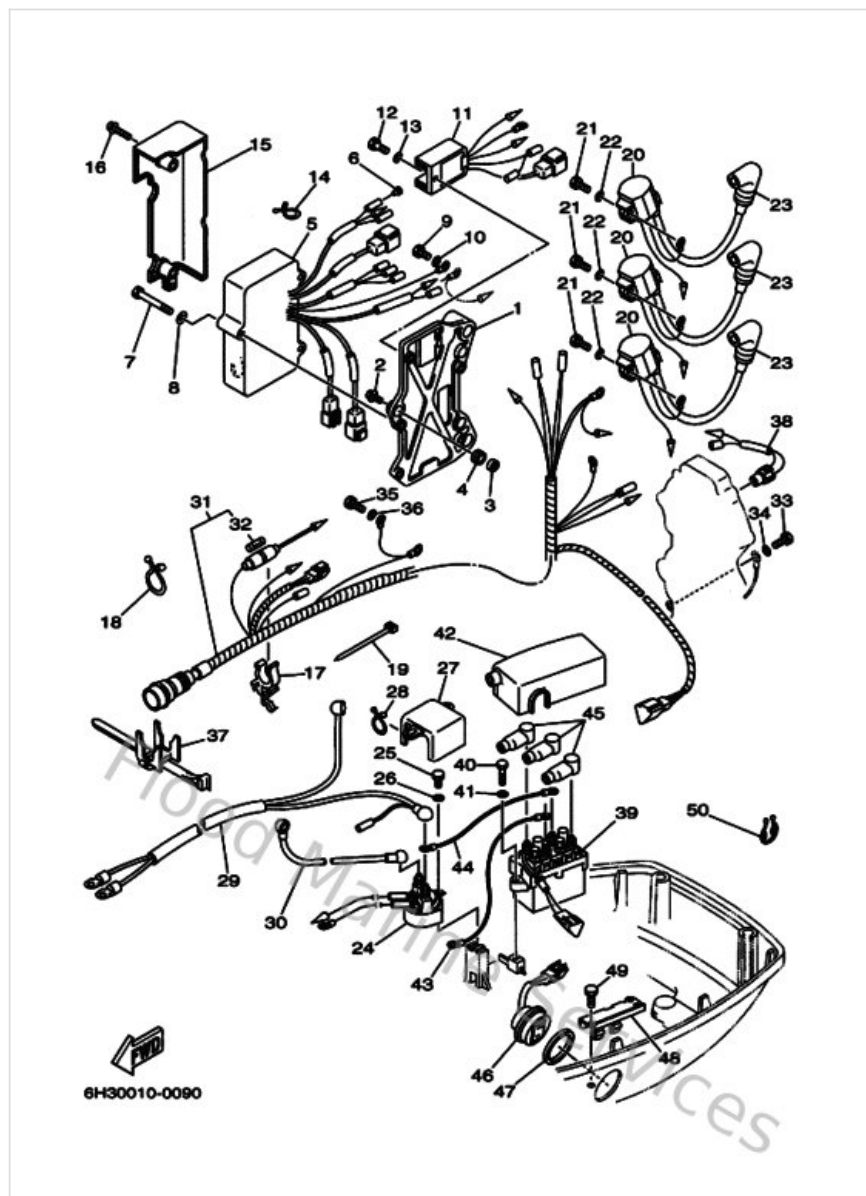
| Ref | Part  |                         |
|-----|---|-------------------------|
| 33  | <a href="#">6H3124111000</a><br>Thermostat                  | <a href="#">Buy now</a> |
| 34  | <a href="#">6H312413009M</a><br>Cover, thermostat           | <a href="#">Buy now</a> |
| 35  | <a href="#">6H312414A100</a><br>Gasket, cover               | <a href="#">Buy now</a> |
| 36  | <a href="#">970130602500</a><br>Bolt(62y)                   | <a href="#">Buy now</a> |
| 38  | <a href="#">6H341111019M</a><br>Inner cover, exhaust        | <a href="#">Buy now</a> |
| 39  | <a href="#">6H341112A000</a><br>Gasket, exhaust inner cover | <a href="#">Buy now</a> |
| 40  | <a href="#">6H341113029M</a><br>Outer cover, exhaust        | <a href="#">Buy now</a> |
| 41  | <a href="#">6H341114A000</a><br>Gasket, exhaust outer cover | <a href="#">Buy now</a> |
| 42  | <a href="#">970140603500</a><br>Bolt(3rv)                   | <a href="#">Buy now</a> |
| 44  | <a href="#">663243120100</a><br>Pipe 1                      | <a href="#">Buy now</a> |
| 45  | <a href="#">904670800400</a><br>Clip, pipe 6162435600       | <a href="#">Buy now</a> |
| 46  | <a href="#">947020024700</a><br>Plug, spark (br8hs-10)      | <a href="#">Buy now</a> |

# Electrical 1



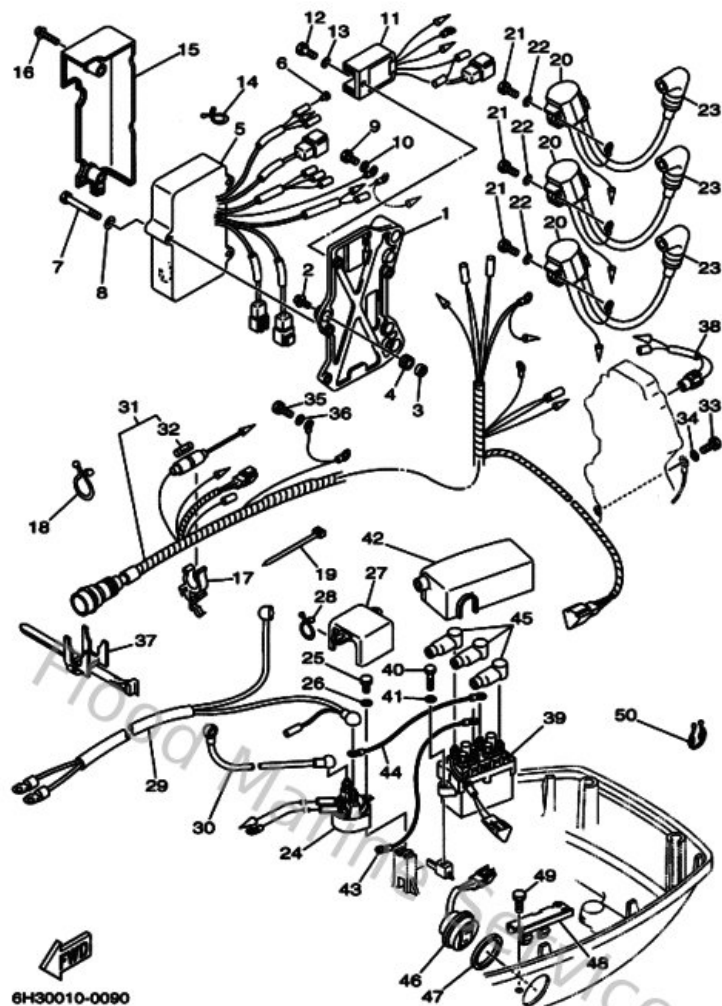
| Ref | Part   |                         |
|-----|--|-------------------------|
| 1   | <a href="#">6H3855421194</a><br>Bracket                        | <a href="#">Buy now</a> |
| 2   | <a href="#">9010506M1400</a><br>Bolt (6e0)                     | <a href="#">Buy now</a> |
| 3   | <a href="#">9038706M4300</a><br>Coller (6e9)                   | <a href="#">Buy now</a> |
| 4   | <a href="#">9048013M5400</a><br>Grommet(6h2)                   | <a href="#">Buy now</a> |
| 5   | <a href="#">6H2855401000</a><br>C.d.i. unit assembly           | <a href="#">Buy now</a> |
| 6   | <a href="#">703821190000</a><br>Cover, lead wire               | <a href="#">Buy now</a> |
| 7   | <a href="#">970950604500</a><br>Bolt, hexagon                  | <a href="#">Buy now</a> |
| 8   | <a href="#">929950660000</a><br>Washer, plain (646)            | <a href="#">Buy now</a> |
| 9   | <a href="#">970130601200</a><br>Bolt(gh1)                      | <a href="#">Buy now</a> |
| 10  | <a href="#">929900660000</a><br>Washer, plain (646)            | <a href="#">Buy now</a> |
| 11  | <a href="#">6H2819601000</a><br>Rectifier & regulator assembly | <a href="#">Buy now</a> |
| 12  | <a href="#">970950601600</a><br>Bolt, hexagon deep recess      | <a href="#">Buy now</a> |
| 14  | <a href="#">9046405M1600</a><br>Clamp(6j8)                     | <a href="#">Buy now</a> |
| 15  | <a href="#">6H3819161000</a><br>Cover, terminal                | <a href="#">Buy now</a> |
| 16  | <a href="#">9015906M0100</a><br>Screw, with washer (6f5)       | <a href="#">Buy now</a> |

# Electrical 1



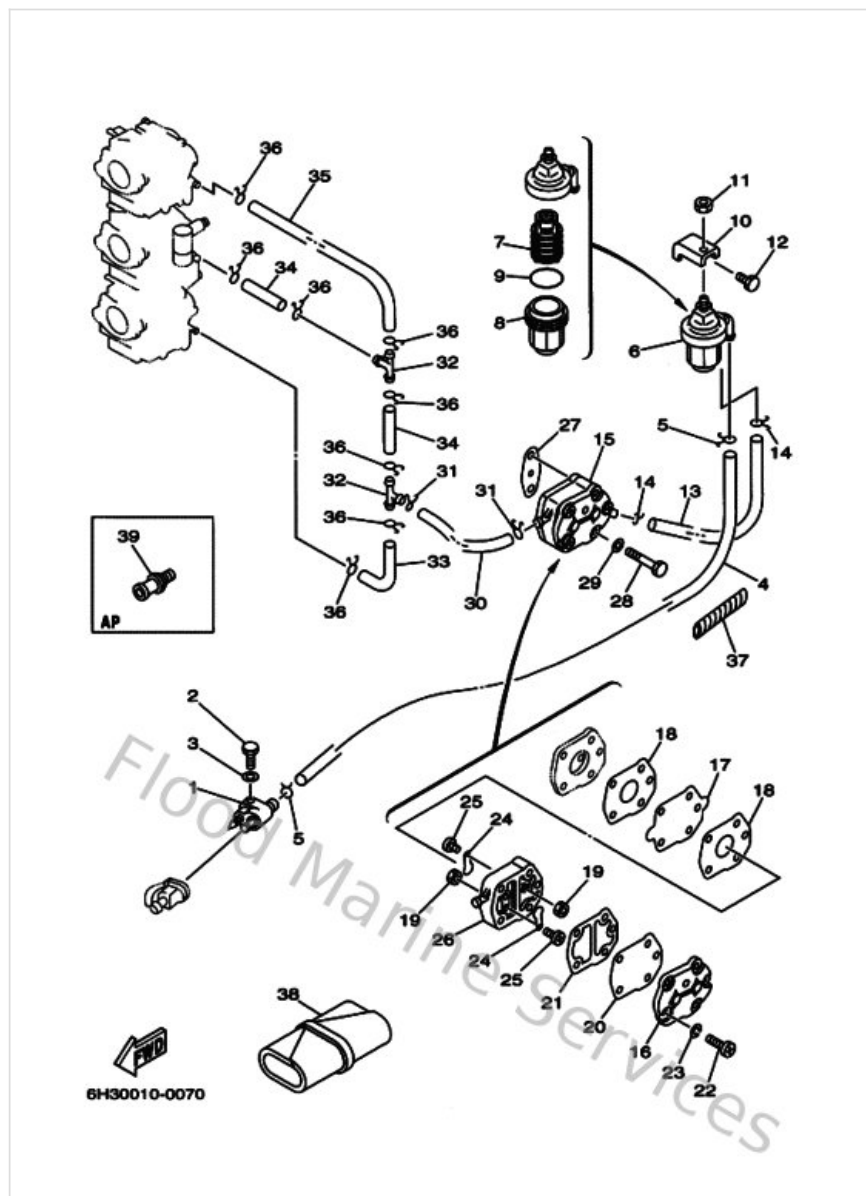
| Ref | Part  |                         |
|-----|---|-------------------------|
| 17  | <a href="#">6G5821520000</a><br>Holder, fuse              | <a href="#">Buy now</a> |
| 18  | <a href="#">9046423M2200</a><br>Clamp                     | <a href="#">Buy now</a> |
| 19  | <a href="#">9046513M1100</a><br>Clamp (6e5)               | <a href="#">Buy now</a> |
| 20  | <a href="#">697855700000</a><br>Ignition coil assembly    | <a href="#">Buy now</a> |
| 21  | <a href="#">970130602000</a><br>Bolt(62y)                 | <a href="#">Buy now</a> |
| 22  | <a href="#">929030660000</a><br>Washer, plain (646)       | <a href="#">Buy now</a> |
| 23  | <a href="#">6G1823702100</a><br>Plug cap assembly         | <a href="#">Buy now</a> |
| 24  | <a href="#">688819501000</a><br>Relay assembly            | <a href="#">Buy now</a> |
| 25  | <a href="#">970130601600</a><br>Bolt, hexagon deep recess | <a href="#">Buy now</a> |
| 27  | <a href="#">6H3821640000</a><br>Case 2                    | <a href="#">Buy now</a> |
| 28  | <a href="#">9046415M1100</a><br>Clamp (3y2)               | <a href="#">Buy now</a> |
| 29  | <a href="#">6H3821050100</a><br>Battery cable             | <a href="#">Buy now</a> |
| 30  | <a href="#">6H3821170000</a><br>Wire, lead                | <a href="#">Buy now</a> |
| 31  | <a href="#">6H2825903100</a><br>Wire harness assembly     | <a href="#">Buy now</a> |
| 32  | <a href="#">682821510000</a><br>Fuse                      | <a href="#">Buy now</a> |

# Electrical 1



| Ref | Part   |                         |
|-----|--|-------------------------|
| 37  | <a href="#">688825940000</a><br>Clamp                  | <a href="#">Buy now</a> |
| 38  | <a href="#">688825601000</a><br>Thermo switch assembly | <a href="#">Buy now</a> |

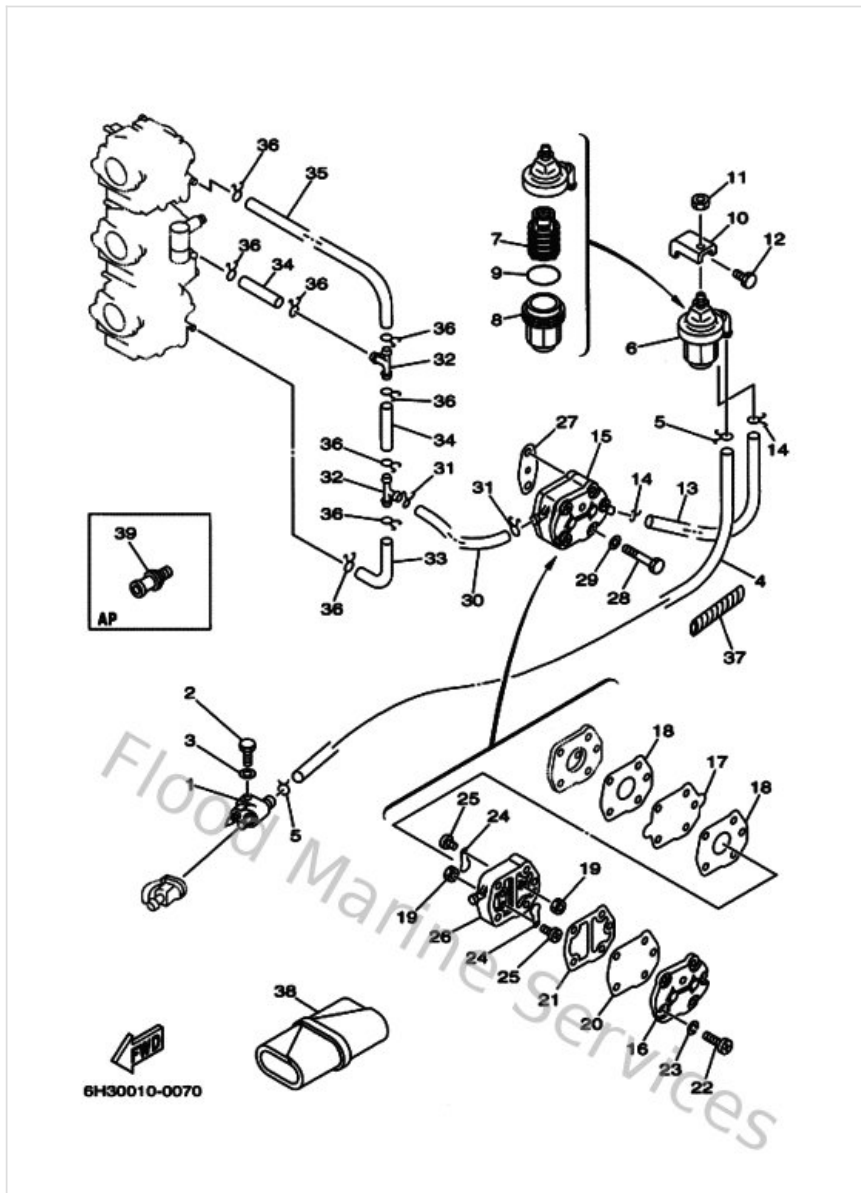
# Fuel



| Ref | Part  |                         |
|-----|---|-------------------------|
| 1   | <a href="#">6G1243040200</a><br>Fuel pipe joint comp. 1 | <a href="#">Buy now</a> |
| 2   | <a href="#">970950602500</a><br>Bolt                    | <a href="#">Buy now</a> |
| 3   | <a href="#">929950660000</a><br>Washer, plain (646)     | <a href="#">Buy now</a> |
| 4   | <a href="#">90445092K100</a><br>Hose (I420)             | <a href="#">Buy now</a> |
| 5   | <a href="#">904670800400</a><br>Clip, pipe 6162435600   | <a href="#">Buy now</a> |
| 6   | <a href="#">61N245600000</a><br>Filter assembly         | <a href="#">Buy now</a> |
| 7   | <a href="#">61N245630000</a><br>Element, filter         | <a href="#">Buy now</a> |
| 8   | <a href="#">61N245210000</a><br>Cup, filter             | <a href="#">Buy now</a> |
| 9   | <a href="#">932103273800</a><br>O-ring(1wg)             | <a href="#">Buy now</a> |
| 10  | <a href="#">648245660200</a><br>Bracket, filter         | <a href="#">Buy now</a> |
| 11  | <a href="#">953800860000</a><br>Nut (661)               | <a href="#">Buy now</a> |
| 12  | <a href="#">970130601400</a><br>Bolt(gj3)               | <a href="#">Buy now</a> |
| 15  | <a href="#">692244100000</a><br>Fuel pump assembly      | <a href="#">Buy now</a> |
| 16  | <a href="#">6A0244130000</a><br>Cover, pump             | <a href="#">Buy now</a> |
| 17  | <a href="#">692244110000</a><br>Diaphragm               | <a href="#">Buy now</a> |

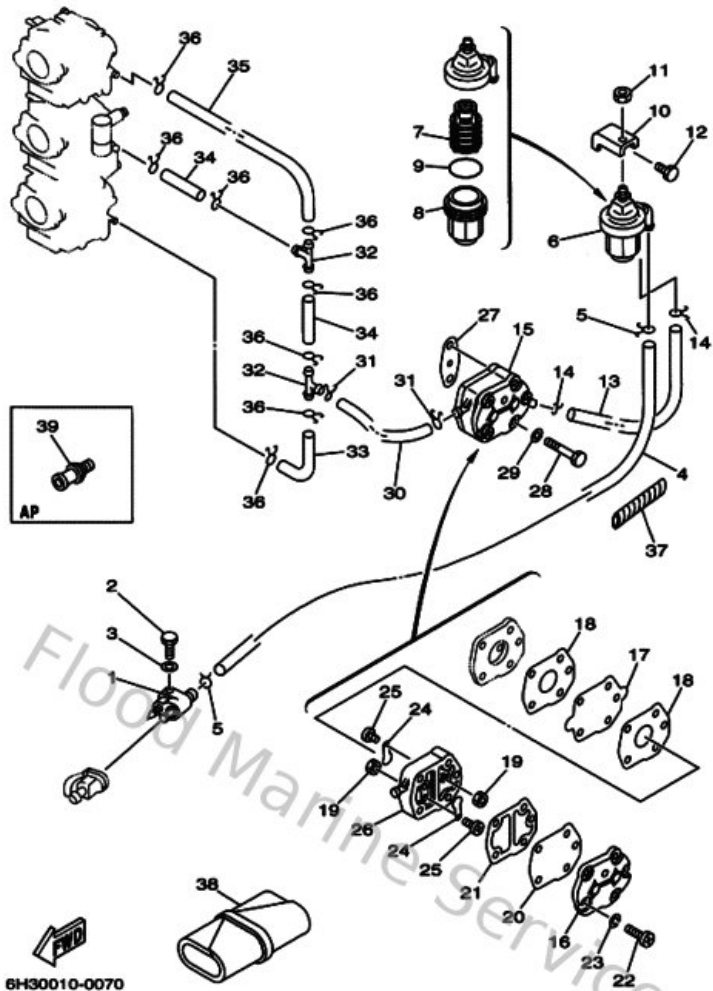


# Fuel



| Ref | Part  |                         |
|-----|---|-------------------------|
| 18  | <a href="#">648244340100</a><br>Gasket, body            | <a href="#">Buy now</a> |
| 19  | <a href="#">953800360000</a><br>Nut (6g8)               | <a href="#">Buy now</a> |
| 20  | <a href="#">663244110000</a><br>Diaphragm               | <a href="#">Buy now</a> |
| 21  | <a href="#">648244350200</a><br>Gasket, body 2          | <a href="#">Buy now</a> |
| 22  | <a href="#">985030502800</a><br>Ybs86-530 screw,panhead | <a href="#">Buy now</a> |
| 23  | <a href="#">929900510000</a><br>Ybs67-5 washer, spring  | <a href="#">Buy now</a> |
| 24  | <a href="#">62Y244210100</a><br>Valve, check            | <a href="#">Buy now</a> |
| 25  | <a href="#">6A0143250000</a><br>Screw, pan head         | <a href="#">Buy now</a> |
| 26  | <a href="#">6A0244120200</a><br>Body 1                  | <a href="#">Buy now</a> |
| 27  | <a href="#">65024431A000</a><br>Gasket,fuel pump        | <a href="#">Buy now</a> |
| 28  | <a href="#">970950604000</a><br>Bolt (682)              | <a href="#">Buy now</a> |
| 32  | <a href="#">688243780000</a><br>Pipe, joint             | <a href="#">Buy now</a> |
| 33  | <a href="#">6H3243130000</a><br>Pipe, fuel 2            | <a href="#">Buy now</a> |
| 34  | <a href="#">90445090F600</a><br>Hose (I1500)            | <a href="#">Buy now</a> |
| 35  | <a href="#">6H3243140000</a><br>Pipe 4                  | <a href="#">Buy now</a> |

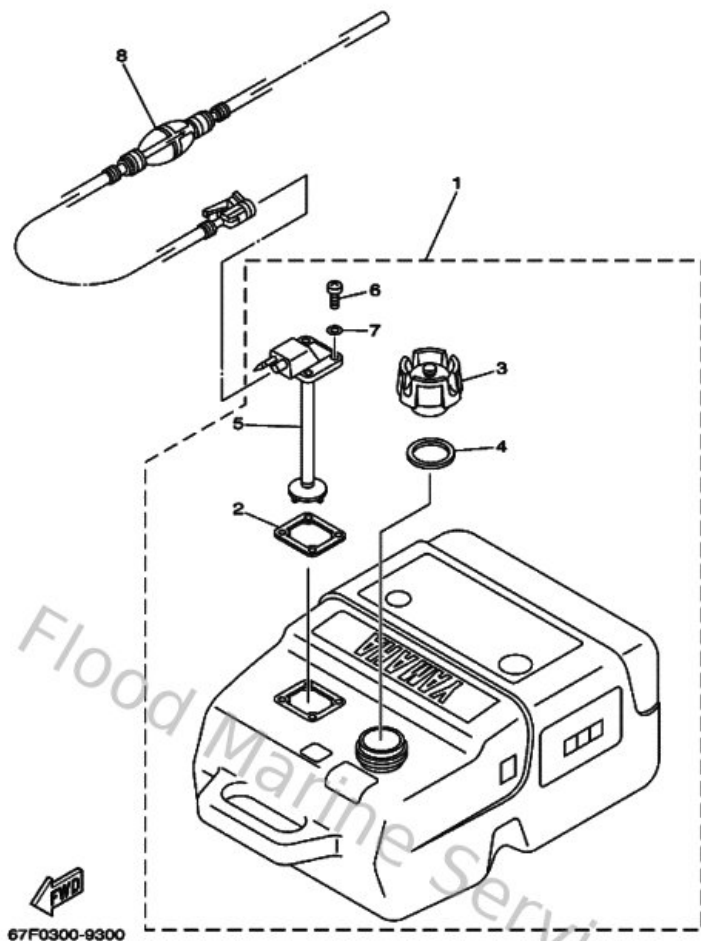
# Fuel



| Ref | Part  |                         |
|-----|---|-------------------------|
| 37  | <a href="#">9044610M0100</a><br>Tube (6e5)        | <a href="#">Buy now</a> |
| 38  | <a href="#">656W28100200</a><br>Tool kit          | <a href="#">Buy now</a> |
| 39  | <a href="#">6E0281930094</a><br>Plug, water check | <a href="#">Buy now</a> |

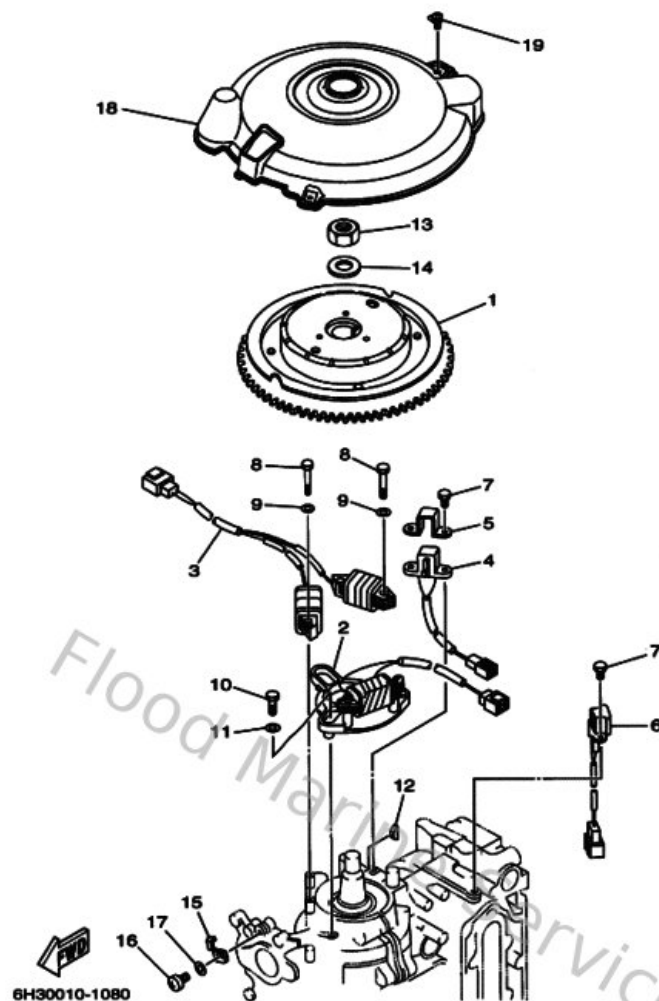


# Fuel Tank



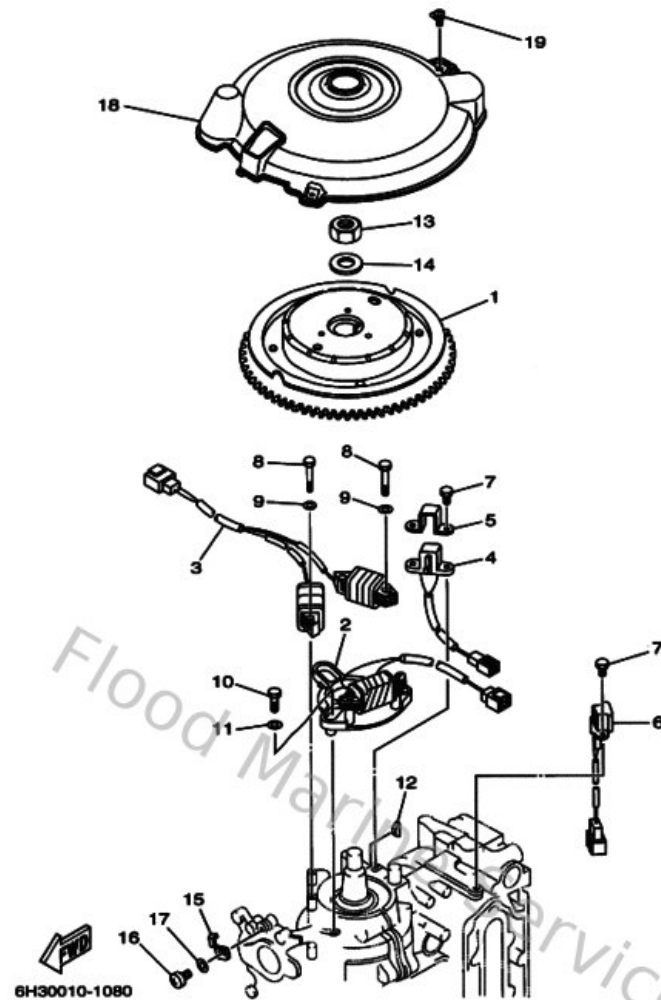
| Ref | Part   |                         |
|-----|--|-------------------------|
| 1   | <a href="#">6YK242010100</a><br>Fuel Tank assembly (25L) | <a href="#">Buy now</a> |
| 2   | <a href="#">6YL242680100</a><br>Gasket, fuel meter       | <a href="#">Buy now</a> |
| 3   | <a href="#">6YK246100000</a><br>Cap assembly             | <a href="#">Buy now</a> |
| 4   | <a href="#">6YL246410000</a><br>Gasket, cap 1            | <a href="#">Buy now</a> |
| 5   | <a href="#">6YK242600100</a><br>Fuel meter assembly      | <a href="#">Buy now</a> |
| 6   | <a href="#">9015705M1600</a><br>Screw, pan head          | <a href="#">Buy now</a> |
| 7   | <a href="#">6YL243290000</a><br>Seal                     | <a href="#">Buy now</a> |
| 8   | <a href="#">6YL243065200</a><br>Fuel pipe comp. 1        | <a href="#">Buy now</a> |

# Generator



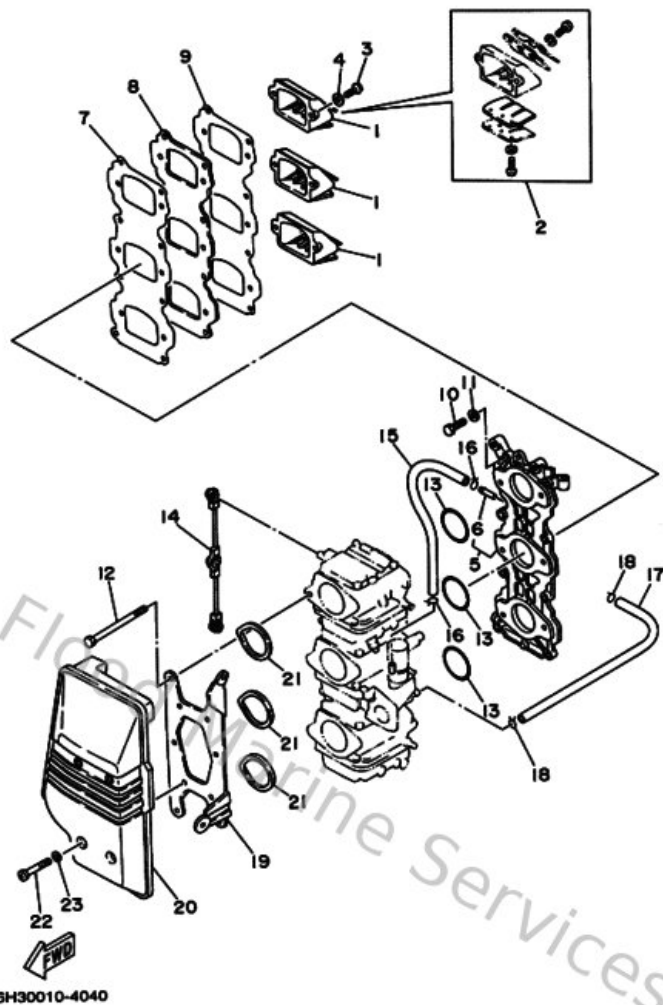
| Ref | Part  |                         |
|-----|---|-------------------------|
| 1   | <a href="#">6H2855500000</a><br>Rotor assembly        | <a href="#">Buy now</a> |
| 2   | <a href="#">6H2855200100</a><br>Coil, charge          | <a href="#">Buy now</a> |
| 3   | <a href="#">6H2855330100</a><br>Coil, lighting        | <a href="#">Buy now</a> |
| 4   | <a href="#">6H2855800100</a><br>Coil, pulser          | <a href="#">Buy now</a> |
| 5   | <a href="#">6H2855820000</a><br>Attachment, pulser    | <a href="#">Buy now</a> |
| 6   | <a href="#">6H2858950100</a><br>Crank position sender | <a href="#">Buy now</a> |
| 7   | <a href="#">970950501200</a><br>Bolt, hexagon         | <a href="#">Buy now</a> |
| 8   | <a href="#">970950603500</a><br>Bolt(j52)             | <a href="#">Buy now</a> |
| 9   | <a href="#">929950660000</a><br>Washer, plain (646)   | <a href="#">Buy now</a> |
| 10  | <a href="#">9010106M2700</a><br>Bolt                  | <a href="#">Buy now</a> |
| 12  | <a href="#">902800501500</a><br>Key, woodruff         | <a href="#">Buy now</a> |
| 13  | <a href="#">901702013700</a><br>Nut, hexagon(663)     | <a href="#">Buy now</a> |
| 14  | <a href="#">9020121M1800</a><br>Washer, plate (663)   | <a href="#">Buy now</a> |
| 15  | <a href="#">6E5813320000</a><br>Plate, timing         | <a href="#">Buy now</a> |
| 16  | <a href="#">978850601000</a><br>Screw pan head        | <a href="#">Buy now</a> |

# Generator



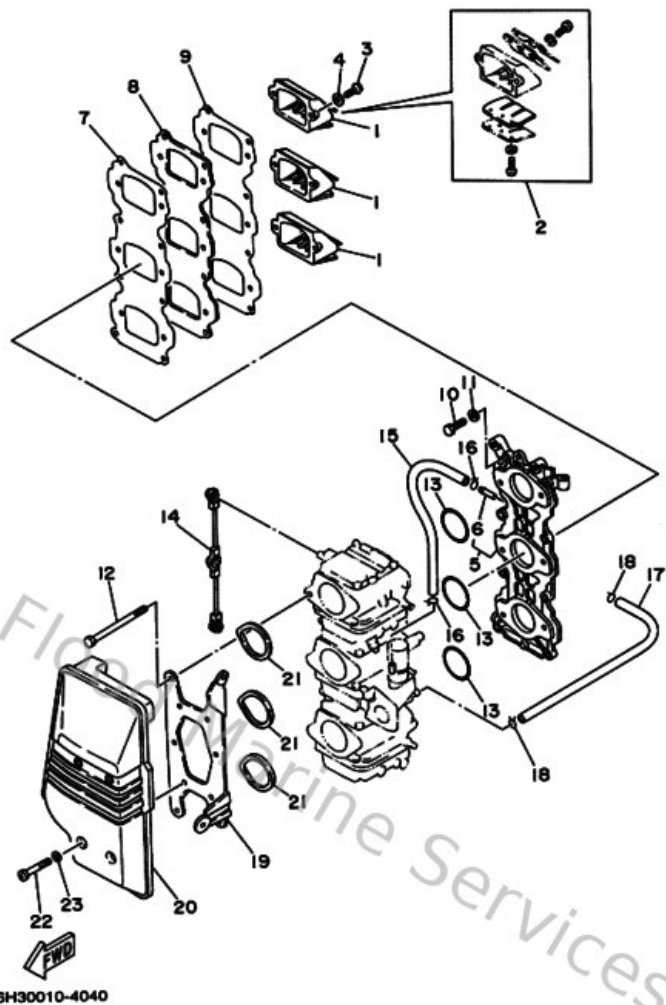
| Ref | Part  |                         |
|-----|---|-------------------------|
| 18  | <a href="#">6H3813370100</a><br>Cover, flywheel         | <a href="#">Buy now</a> |
| 19  | <a href="#">9015906M2300</a><br>Screw, with washer(6b0) | <a href="#">Buy now</a> |

# Intake



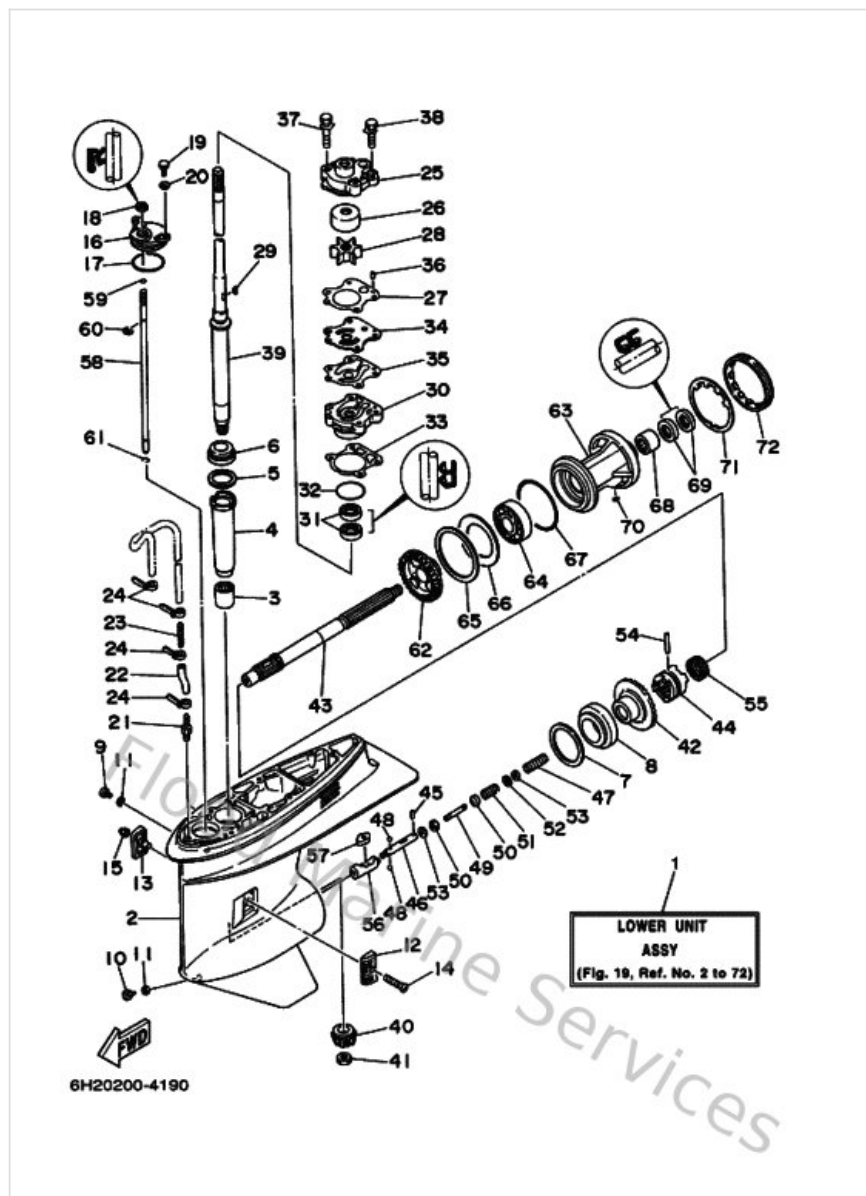
| Ref | Part  |                         |
|-----|---|-------------------------|
| 1   | <a href="#">6H3136100000</a><br>Reed valve assembly       | <a href="#">Buy now</a> |
| 2   | <a href="#">688W00040000</a><br>Reed set                  | <a href="#">Buy now</a> |
| 3   | <a href="#">978800501600</a><br>Screw, pan head(6b0)      | <a href="#">Buy now</a> |
| 4   | <a href="#">929900560000</a><br>Washer, plain (646)       | <a href="#">Buy now</a> |
| 5   | <a href="#">6H3136411300</a><br>Manifold 1                | <a href="#">Buy now</a> |
| 6   | <a href="#">6H1144850000</a><br>Pipe, joint               | <a href="#">Buy now</a> |
| 7   | <a href="#">6H313621A100</a><br>Gasket, valve seat        | <a href="#">Buy now</a> |
| 8   | <a href="#">6H3136240094</a><br>Plate, reed valve         | <a href="#">Buy now</a> |
| 9   | <a href="#">6H313622A100</a><br>Gasket, valve seat        | <a href="#">Buy now</a> |
| 10  | <a href="#">970130602500</a><br>Bolt(62y)                 | <a href="#">Buy now</a> |
| 11  | <a href="#">929900660000</a><br>Washer, plain (646)       | <a href="#">Buy now</a> |
| 12  | <a href="#">970950609500</a><br>Bolt, hexagon deep recess | <a href="#">Buy now</a> |
| 13  | <a href="#">9321039ME400</a><br>O-ring(6h2)               | <a href="#">Buy now</a> |
| 14  | <a href="#">6H3412170000</a><br>Rod, accel lever          | <a href="#">Buy now</a> |
| 15  | <a href="#">904450725500</a><br>Hose (I200)               | <a href="#">Buy now</a> |

# Intake



| Ref | Part  |                         |
|-----|---|-------------------------|
| 16  | <a href="#">904670601600</a><br>Clip (655)                | <a href="#">Buy now</a> |
| 17  | <a href="#">6H3143490000</a><br>Pipe                      | <a href="#">Buy now</a> |
| 18  | <a href="#">904670800400</a><br>Clip, pipe 6162435600     | <a href="#">Buy now</a> |
| 19  | <a href="#">6H3144131000</a><br>Stay                      | <a href="#">Buy now</a> |
| 20  | <a href="#">6H3144400200</a><br>Silencer assembly, intake | <a href="#">Buy now</a> |
| 21  | <a href="#">6H3144570100</a><br>Seal                      | <a href="#">Buy now</a> |
| 22  | <a href="#">978850604500</a><br>Screw, pan head(6b0)      | <a href="#">Buy now</a> |
| 23  | <a href="#">9020906M0500</a><br>Washer (688)              | <a href="#">Buy now</a> |

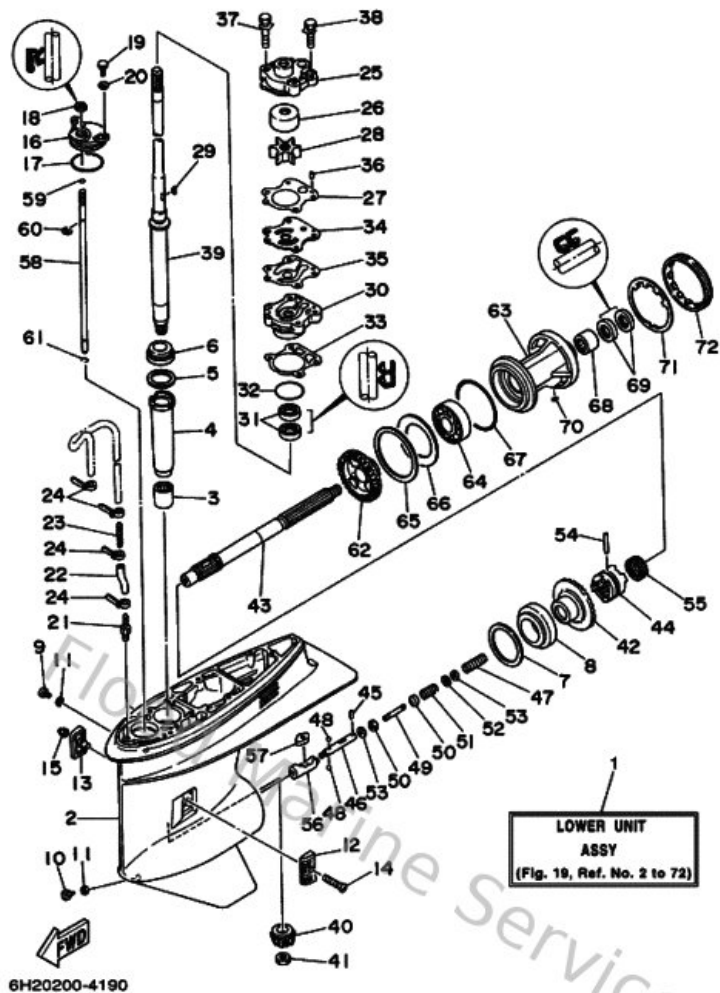
## Lower Casing & Drive 1



| Ref | Part  |                         |
|-----|---|-------------------------|
| 1   | <a href="#">6H345300154D</a><br>Lower unit assembly           | <a href="#">Buy now</a> |
| 2   | <a href="#">6H145301034D</a><br>Lower casing set              | <a href="#">Buy now</a> |
| 3   | <a href="#">93315325V100</a><br>Bearing, needle (688)         | <a href="#">Buy now</a> |
| 4   | <a href="#">688455360100</a><br>Sleeve, drive shaft           | <a href="#">Buy now</a> |
| 5   | <a href="#">688455870130</a><br>Shim (t:0.30mm)               | <a href="#">Buy now</a> |
| 6   | <a href="#">93332000U300</a><br>Brg,tapered roller 50mm (688) | <a href="#">Buy now</a> |
| 7   | <a href="#">688455676000</a><br>Shim (t:0.50mm)               | <a href="#">Buy now</a> |
| 8   | <a href="#">93332000W700</a><br>Bearing(6b0)                  | <a href="#">Buy now</a> |
| 9   | <a href="#">903400800200</a><br>Plug, straight screw          | <a href="#">Buy now</a> |
| 10  | <a href="#">688453410000</a><br>Plug, drain                   | <a href="#">Buy now</a> |
| 11  | <a href="#">904300802000</a><br>Gasket                        | <a href="#">Buy now</a> |
| 12  | <a href="#">6H1452140000</a><br>Cover, water inlet            | <a href="#">Buy now</a> |
| 13  | <a href="#">6H1452150000</a><br>Cover, water inlet            | <a href="#">Buy now</a> |
| 14  | <a href="#">9015105M0000</a><br>Screw, countersunk(692)       | <a href="#">Buy now</a> |
| 15  | <a href="#">901850590400</a><br>Nut nylon (sus)(ex4)          | <a href="#">Buy now</a> |



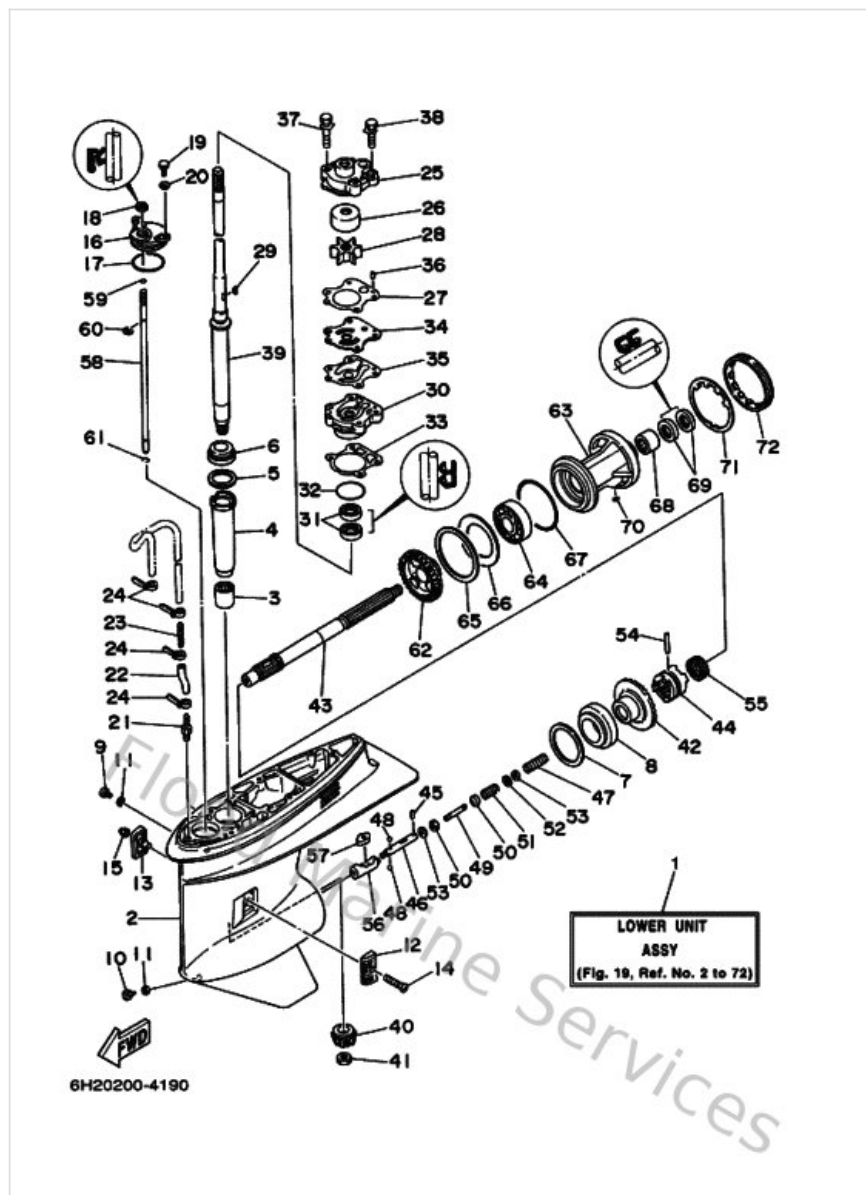
## Lower Casing & Drive 1



| Ref | Part  |                         |
|-----|---|-------------------------|
| 16  | <a href="#">688453210000</a><br>Plate                     | <a href="#">Buy now</a> |
| 17  | <a href="#">932104904600</a><br>O-ring (620)              | <a href="#">Buy now</a> |
| 18  | <a href="#">931060901400</a><br>Oil seal                  | <a href="#">Buy now</a> |
| 19  | <a href="#">970950601600</a><br>Bolt, hexagon deep recess | <a href="#">Buy now</a> |
| 20  | <a href="#">929950660000</a><br>Washer, plain (646)       | <a href="#">Buy now</a> |
| 21  | <a href="#">6E5453780000</a><br>Nipple, hose              | <a href="#">Buy now</a> |
| 22  | <a href="#">9044507MF200</a><br>Hose (1250)               | <a href="#">Buy now</a> |
| 23  | <a href="#">6E5835581000</a><br>End, nipple               | <a href="#">Buy now</a> |
| 24  | <a href="#">9046511M1000</a><br>Clamp                     | <a href="#">Buy now</a> |
| 25  | <a href="#">6H3443110000</a><br>Housing, water pump 1     | <a href="#">Buy now</a> |
| 26  | <a href="#">663443220000</a><br>Insert, cartridge         | <a href="#">Buy now</a> |
| 27  | <a href="#">6H344315A000</a><br>Gasket, water pump 1      | <a href="#">Buy now</a> |
| 28  | <a href="#">6H3443520000</a><br>Impellar                  | <a href="#">Buy now</a> |
| 29  | <a href="#">9028003M0300</a><br>Key, woodruff (697)       | <a href="#">Buy now</a> |
| 30  | <a href="#">6H3443410094</a><br>Housing, water pump set   | <a href="#">Buy now</a> |

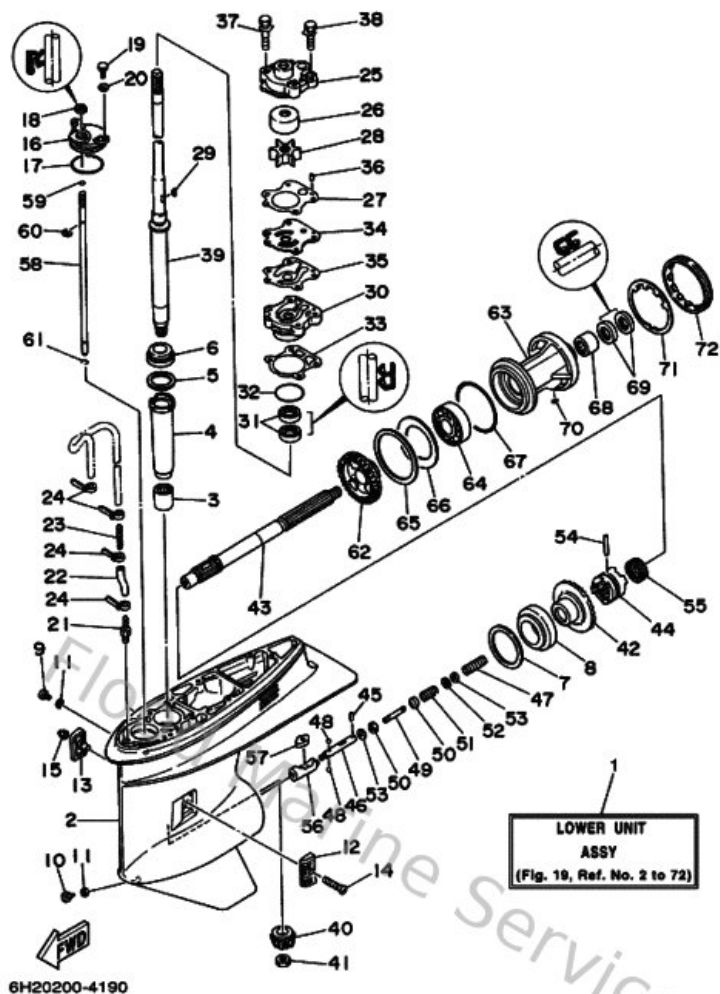


## Lower Casing & Drive 1



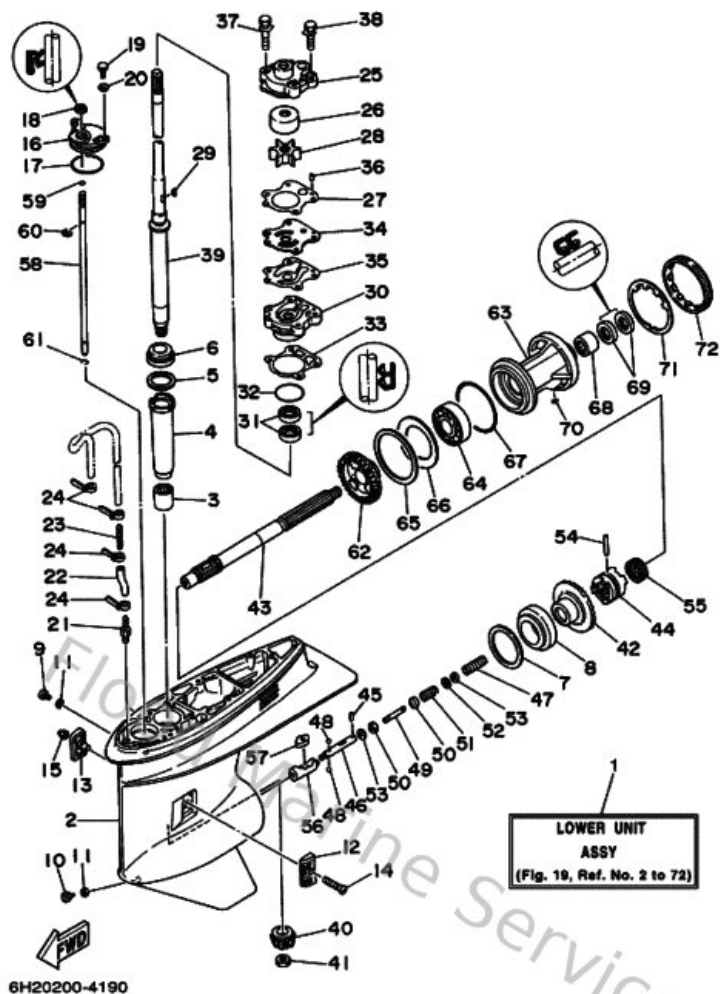
| Ref | Part   |                         |
|-----|--|-------------------------|
| 31  | <a href="#">931012307000</a><br>Oil seal (663)             | <a href="#">Buy now</a> |
| 32  | <a href="#">932104604400</a><br>O-ring                     | <a href="#">Buy now</a> |
| 33  | <a href="#">68844316A000</a><br>Gasket,water pump 2        | <a href="#">Buy now</a> |
| 34  | <a href="#">6H3443230000</a><br>Outer plate, cartridge     | <a href="#">Buy now</a> |
| 35  | <a href="#">6H344324A000</a><br>Gasket,cartridge Out,plate | <a href="#">Buy now</a> |
| 36  | <a href="#">9360410M0300</a><br>Pin, dowel (688)           | <a href="#">Buy now</a> |
| 37  | <a href="#">9011908M3300</a><br>Bolt, with washer(6b0)     | <a href="#">Buy now</a> |
| 38  | <a href="#">9011908M1400</a><br>Bolt, with washer          | <a href="#">Buy now</a> |
| 39  | <a href="#">6H3455011000</a><br>Drive Shaft Comp           | <a href="#">Buy now</a> |
| 40  | <a href="#">6K5455510000</a><br>Pinion                     | <a href="#">Buy now</a> |
| 41  | <a href="#">9017016M0100</a><br>Nut, hexagon (688)         | <a href="#">Buy now</a> |
| 42  | <a href="#">6K5455600000</a><br>Gear                       | <a href="#">Buy now</a> |
| 43  | <a href="#">6H1456110100</a><br>Shaft, propeller           | <a href="#">Buy now</a> |
| 44  | <a href="#">6H1456310100</a><br>Clutch, dog                | <a href="#">Buy now</a> |
| 45  | <a href="#">9360312M1100</a><br>Pin, dowel(6h1)            | <a href="#">Buy now</a> |

## Lower Casing & Drive 1



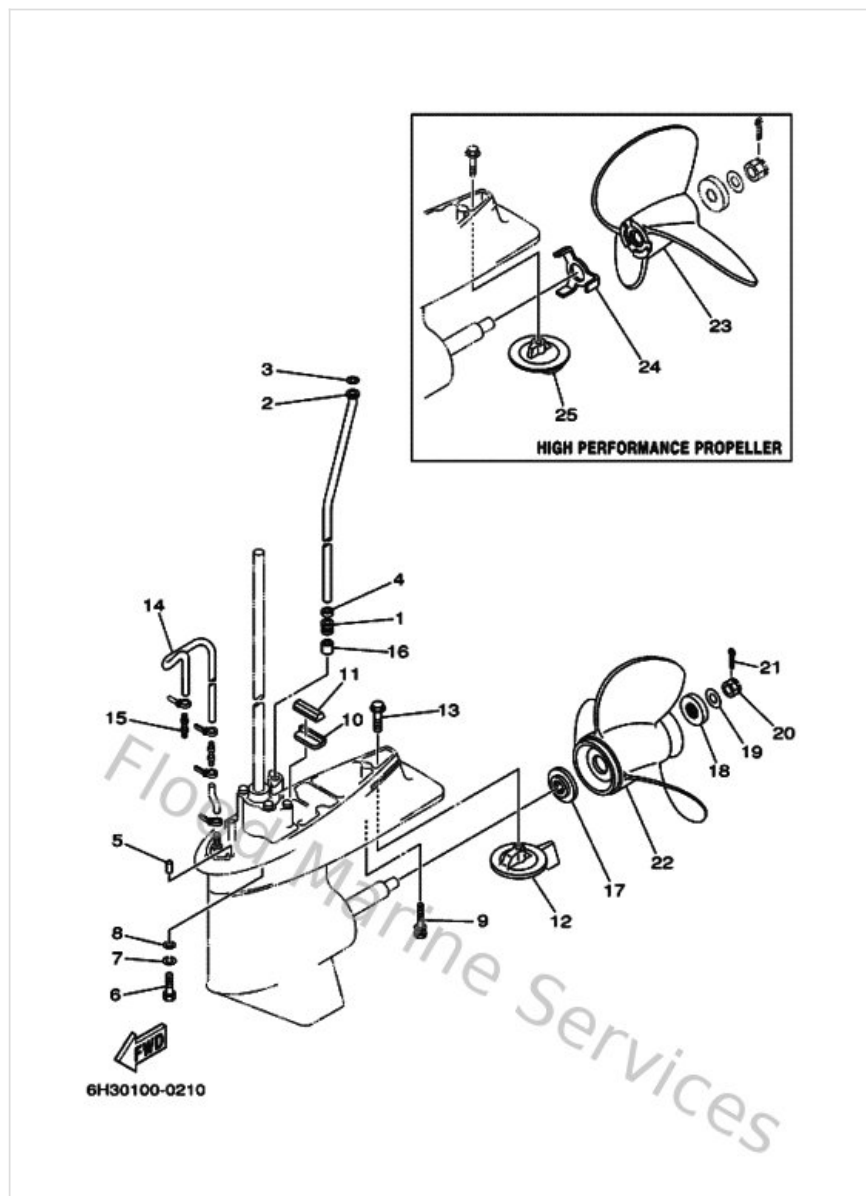
| Ref | Part   |                         |
|-----|--|-------------------------|
| 46  | <a href="#">6H1456340200</a><br>Slide, shift             | <a href="#">Buy now</a> |
| 47  | <a href="#">9050116M6500</a><br>Spring, compression(6h1) | <a href="#">Buy now</a> |
| 48  | <a href="#">935031600300</a><br>Ball                     | <a href="#">Buy now</a> |
| 49  | <a href="#">6H1456680000</a><br>Shaft, free 1            | <a href="#">Buy now</a> |
| 50  | <a href="#">6H1456350000</a><br>Plunger, shift           | <a href="#">Buy now</a> |
| 51  | <a href="#">9050112M4800</a><br>Spring (6h1)             | <a href="#">Buy now</a> |
| 52  | <a href="#">902010331300</a><br>Washer, plate 8077743700 | <a href="#">Buy now</a> |
| 53  | <a href="#">9018302M0300</a><br>Nut, spring (6h1)        | <a href="#">Buy now</a> |
| 54  | <a href="#">9025007M0200</a><br>Pin, straight (688)      | <a href="#">Buy now</a> |
| 55  | <a href="#">688456330000</a><br>Ping, cross pin          | <a href="#">Buy now</a> |
| 56  | <a href="#">6H1456410100</a><br>Shifter                  | <a href="#">Buy now</a> |
| 57  | <a href="#">6H1441510000</a><br>Cam, shift               | <a href="#">Buy now</a> |
| 58  | <a href="#">6H1441440000</a><br>Rod, shift 2             | <a href="#">Buy now</a> |
| 59  | <a href="#">932100754000</a><br>O-ring (11m)             | <a href="#">Buy now</a> |
| 60  | <a href="#">934300800600</a><br>Circlip(2r6)             | <a href="#">Buy now</a> |

## Lower Casing & Drive 1



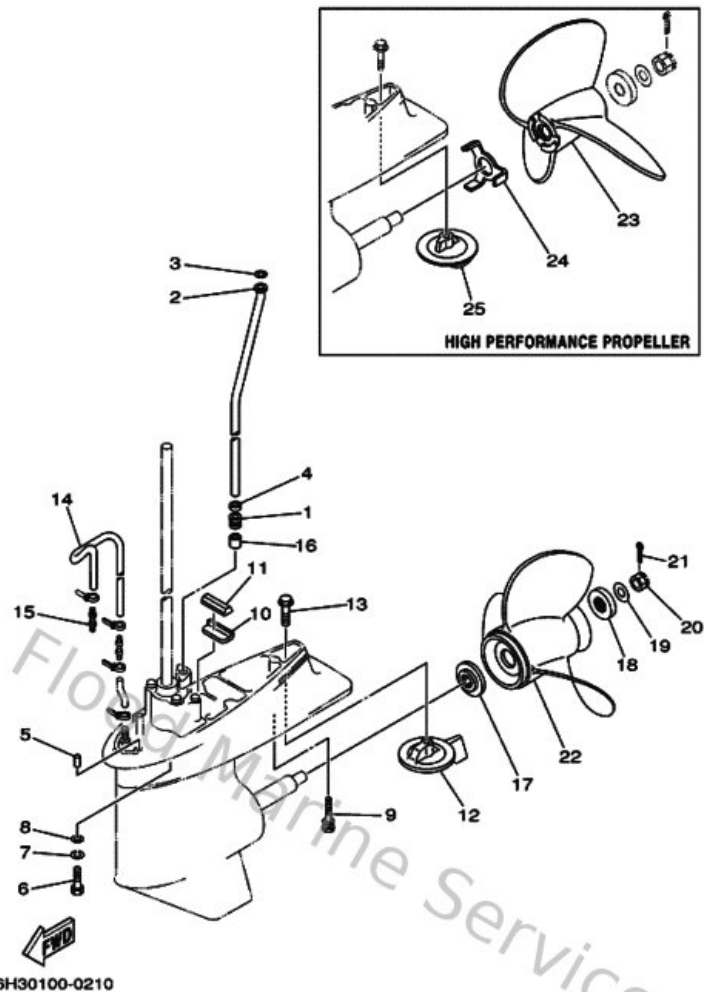
| Ref | Part   |                         |
|-----|--|-------------------------|
| 61  | <a href="#">9345007M0000</a><br>Circlip (6e5)                | <a href="#">Buy now</a> |
| 62  | <a href="#">6H3455710000</a><br>Gear 2                       | <a href="#">Buy now</a> |
| 63  | <a href="#">688453310094</a><br>Housing, bearing             | <a href="#">Buy now</a> |
| 64  | <a href="#">93306207U000</a><br>Brg,r-b 6207 72mm 280g (688) | <a href="#">Buy now</a> |
| 65  | <a href="#">688455776000</a><br>Shim (t:0.50mm)              | <a href="#">Buy now</a> |
| 66  | <a href="#">688455760000</a><br>Washer, thrust 2             | <a href="#">Buy now</a> |
| 67  | <a href="#">9321085M9700</a><br>O-ring(6h1)                  | <a href="#">Buy now</a> |
| 68  | <a href="#">93317325U000</a><br>Brg,needle                   | <a href="#">Buy now</a> |
| 69  | <a href="#">9310125M0300</a><br>Oil seal                     | <a href="#">Buy now</a> |
| 70  | <a href="#">902820401000</a><br>Key, strait(663)             | <a href="#">Buy now</a> |
| 71  | <a href="#">688453830200</a><br>Washer, claw                 | <a href="#">Buy now</a> |
| 72  | <a href="#">688453840000</a><br>Nut                          | <a href="#">Buy now</a> |

## Lower Casing & Drive 2



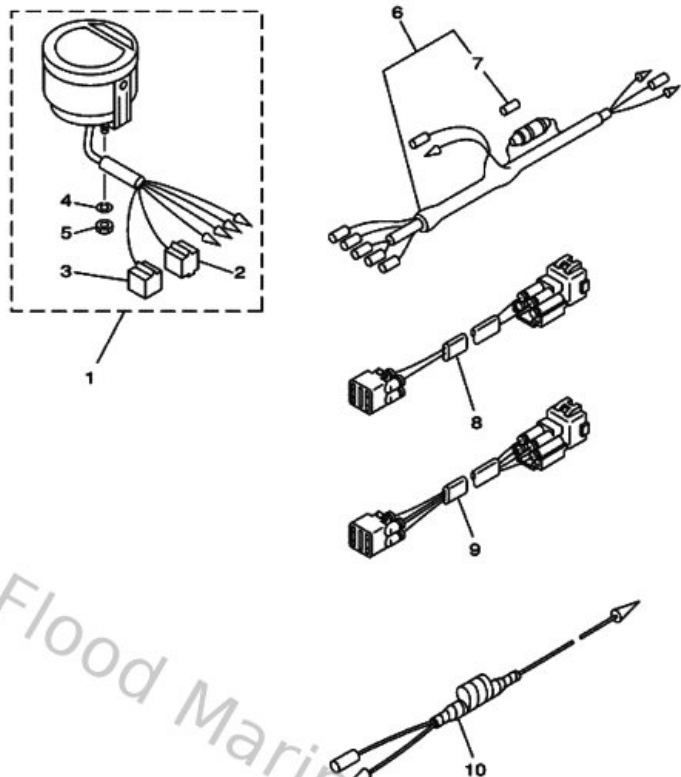
| Ref | Part  |                         |
|-----|---|-------------------------|
| 1   | <a href="#">663443670000</a><br>Damper, water seal 3      | <a href="#">Buy now</a> |
| 2   | <a href="#">6H3443611000</a><br>Tube, water               | <a href="#">Buy now</a> |
| 3   | <a href="#">902021206000</a><br>Washer, plate(663)        | <a href="#">Buy now</a> |
| 4   | <a href="#">904301207200</a><br>Gasket                    | <a href="#">Buy now</a> |
| 5   | <a href="#">936061201900</a><br>Pin, dowel (614)          | <a href="#">Buy now</a> |
| 6   | <a href="#">970751004000</a><br>Bolt, hexagon deep recess | <a href="#">Buy now</a> |
| 7   | <a href="#">929901010000</a><br>Ybs67-10 washer, spring   | <a href="#">Buy now</a> |
| 8   | <a href="#">929901060000</a><br>Washer, plate             | <a href="#">Buy now</a> |
| 9   | <a href="#">9011908M8400</a><br>Bolt, with washer         | <a href="#">Buy now</a> |
| 10  | <a href="#">663453760000</a><br>Guide, seal damper        | <a href="#">Buy now</a> |
| 11  | <a href="#">688453750000</a><br>Damper, seal 2            | <a href="#">Buy now</a> |
| 12  | <a href="#">688453710200</a><br>Tab-trim                  | <a href="#">Buy now</a> |
| 13  | <a href="#">9010510M0000</a><br>Bolt, hexagon (663)       | <a href="#">Buy now</a> |
| 14  | <a href="#">9044507MF100</a><br>Hose (I570)               | <a href="#">Buy now</a> |
| 15  | <a href="#">6E5835580000</a><br>End, nipple               | <a href="#">Buy now</a> |

## Lower Casing & Drive 2



| Ref | Part   |                         |
|-----|--|-------------------------|
| 16  | <a href="#">663443660000</a><br>Damper, water seal 2             | <a href="#">Buy now</a> |
| 17  | <a href="#">688459870100</a><br>Spacer                           | <a href="#">Buy now</a> |
| 18  | <a href="#">688459970100</a><br>Spacer 2                         | <a href="#">Buy now</a> |
| 19  | <a href="#">9020117M0000</a><br>Washer, plate(6h1)               | <a href="#">Buy now</a> |
| 20  | <a href="#">901711601100</a><br>Nut, castle (663)                | <a href="#">Buy now</a> |
| 21  | <a href="#">914904002500</a><br>Pin, cotter (663)                | <a href="#">Buy now</a> |
| 22  | <a href="#">688459720200</a><br>Propeller (3x13"x21"-k)          | <a href="#">Buy now</a> |
| 23  | <a href="#">6E5459781000</a><br>Propeller assembly (3x14"x26"-p) | <a href="#">Buy now</a> |
| 24  | <a href="#">6E5459941000</a><br>Plate, tooth                     | <a href="#">Buy now</a> |
| 25  | <a href="#">6E5453711000</a><br>Tab-trim                         | <a href="#">Buy now</a> |

# Meter

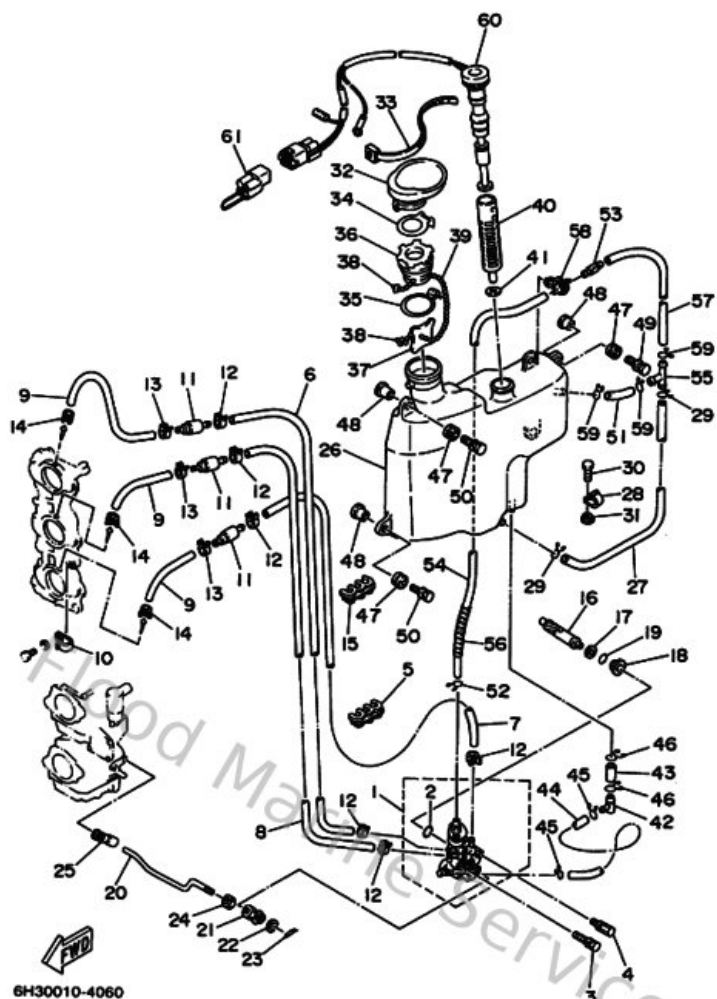


6H30100-0270

| Ref | Part   |                         |
|-----|--|-------------------------|
| 1   | <a href="#">6Y583500T200</a><br>Digital tachometer assembly    | <a href="#">Buy now</a> |
| 2   | <a href="#">9E4500443300</a><br>Housing, connector (m-4-w)     | <a href="#">Buy now</a> |
| 3   | <a href="#">9E4500453300</a><br>Housing, f-4-w(5pcs)           | <a href="#">Buy now</a> |
| 4   | <a href="#">929900410000</a><br>Ybs67-4 washer, spring         | <a href="#">Buy now</a> |
| 5   | <a href="#">953030460000</a><br>Nut, hexagon (663)             | <a href="#">Buy now</a> |
| 6   | <a href="#">6Y5835530000</a><br>Wire, lead (l=2.5m)            | <a href="#">Buy now</a> |
| 7   | <a href="#">1E6821510000</a><br>Fuse (10a)                     | <a href="#">Buy now</a> |
| 8   | <a href="#">6R3825217000</a><br>Wire, lead (for tach., 7m)     | <a href="#">Buy now</a> |
| 9   | <a href="#">6R3825537000</a><br>Extension, wire lead (for trim | <a href="#">Buy now</a> |
| 10  | <a href="#">6H4813151100</a><br>Lead wire assembly             | <a href="#">Buy now</a> |

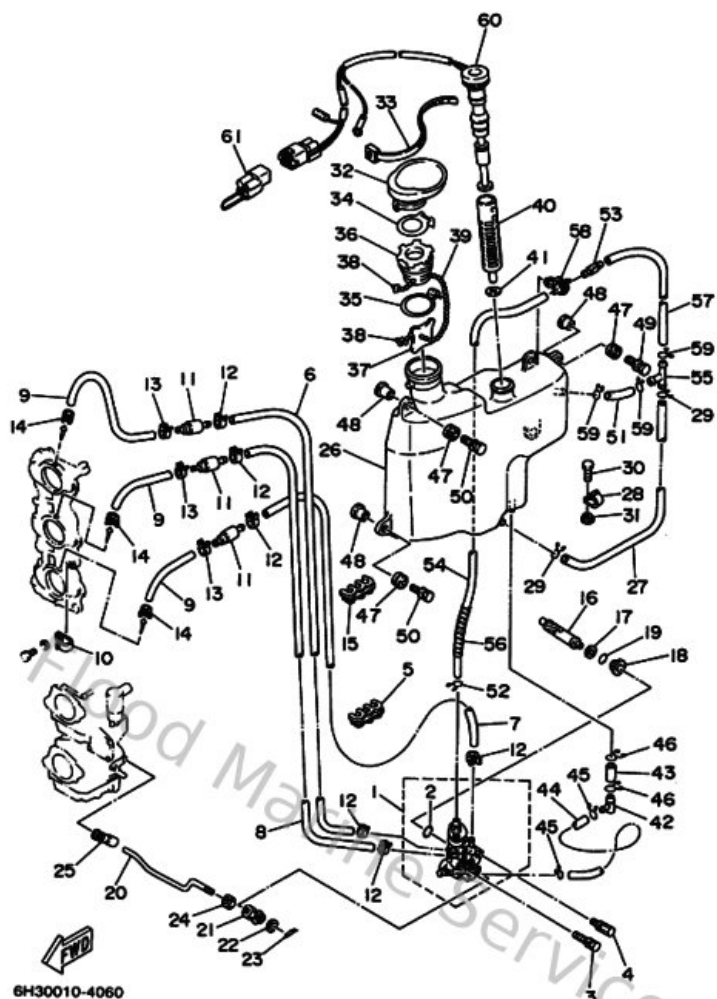


# Oil Pump



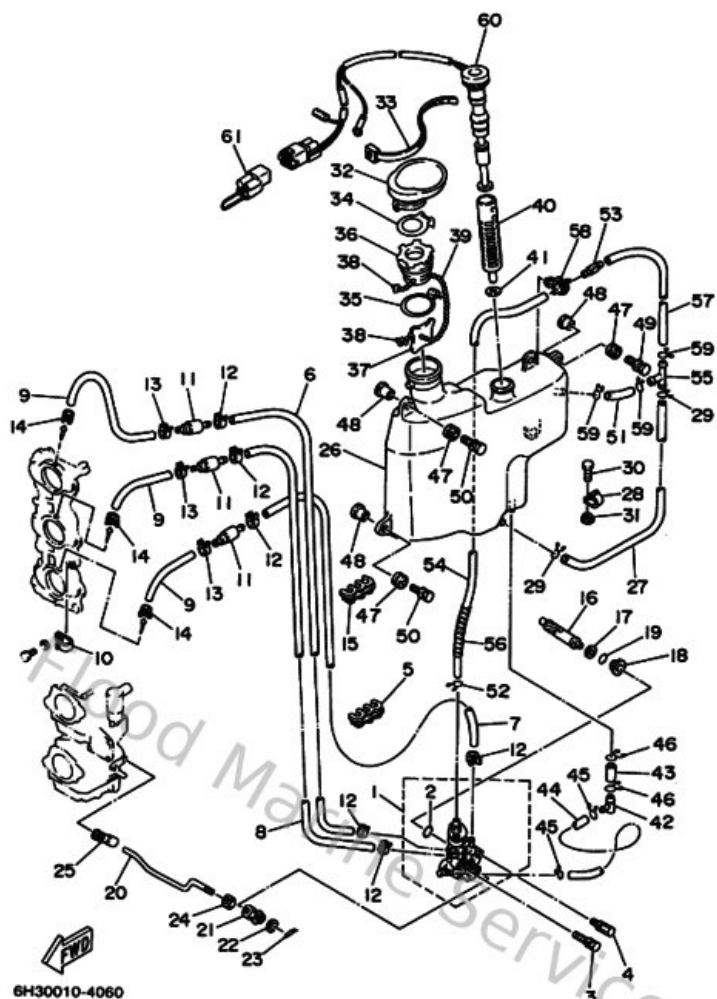
| Ref | Part  |                         |
|-----|---|-------------------------|
| 1   | <a href="#">6H3132000200</a><br>Oil injection pump assembly | <a href="#">Buy now</a> |
| 2   | <a href="#">9321019MA700</a><br>O-ring(6r0)                 | <a href="#">Buy now</a> |
| 3   | <a href="#">9010906M3900</a><br>Bolt(6h0)                   | <a href="#">Buy now</a> |
| 4   | <a href="#">9010906M4000</a><br>Bolt(6h0)                   | <a href="#">Buy now</a> |
| 5   | <a href="#">9046407M0500</a><br>Clamp (6g5)                 | <a href="#">Buy now</a> |
| 6   | <a href="#">9044507M9000</a><br>Hose (l390)                 | <a href="#">Buy now</a> |
| 7   | <a href="#">9044507M2300</a><br>Hose (l570)                 | <a href="#">Buy now</a> |
| 8   | <a href="#">9044507MA300</a><br>Hose (l200)                 | <a href="#">Buy now</a> |
| 9   | <a href="#">9044507M8700</a><br>Hose(62t)                   | <a href="#">Buy now</a> |
| 10  | <a href="#">9046506M8600</a><br>Clamp                       | <a href="#">Buy now</a> |
| 11  | <a href="#">6E9131837000</a><br>Valve check                 | <a href="#">Buy now</a> |
| 12  | <a href="#">9046807M0200</a><br>Clip (6e5)                  | <a href="#">Buy now</a> |
| 16  | <a href="#">6H3115370100</a><br>Gear, driven                | <a href="#">Buy now</a> |
| 17  | <a href="#">9020108M9300</a><br>Washer, plate (6g5)         | <a href="#">Buy now</a> |
| 18  | <a href="#">6H1131170100</a><br>Collar, distance            | <a href="#">Buy now</a> |

# Oil Pump



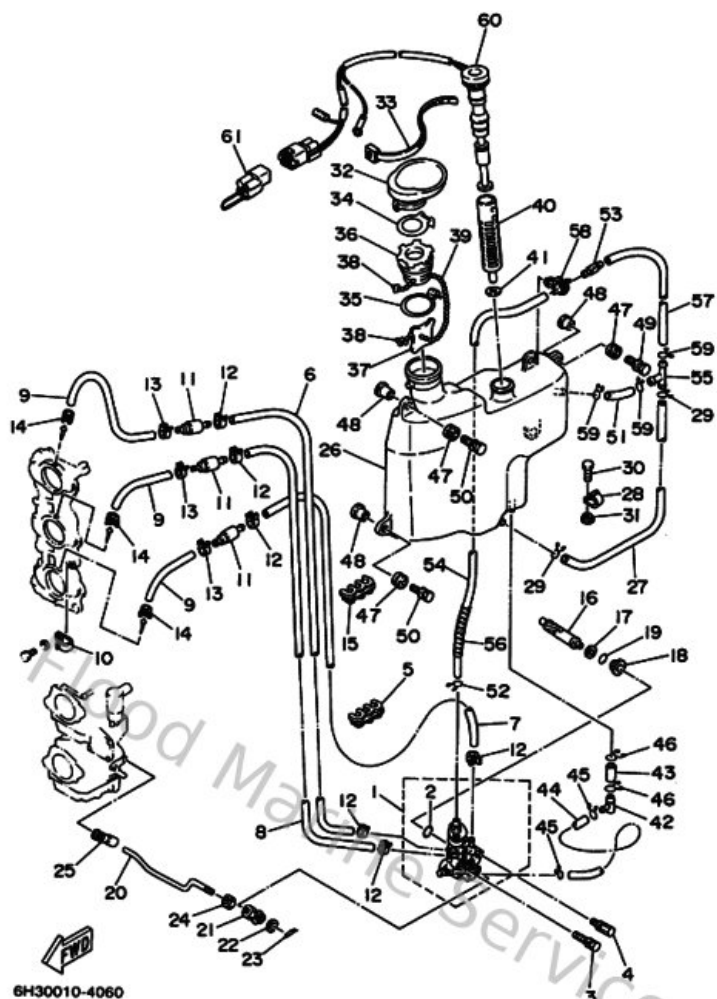
| Ref | Part  |                         |
|-----|---|-------------------------|
| 19  | <a href="#">9321013M0400</a><br>93210-13m04               | <a href="#">Buy now</a> |
| 20  | <a href="#">6H3412410100</a><br>Rod, link                 | <a href="#">Buy now</a> |
| 21  | <a href="#">6H1412370000</a><br>Joint, link               | <a href="#">Buy now</a> |
| 22  | <a href="#">902020508800</a><br>Washer, plate (666)       | <a href="#">Buy now</a> |
| 23  | <a href="#">9046805M0300</a><br>Clip(6j8)                 | <a href="#">Buy now</a> |
| 24  | <a href="#">953800560000</a><br>Nut, hexagon (663)        | <a href="#">Buy now</a> |
| 25  | <a href="#">6E9412370000</a><br>Joint, link               | <a href="#">Buy now</a> |
| 26  | <a href="#">6H3217070600</a><br>Oil tank comp.            | <a href="#">Buy now</a> |
| 27  | <a href="#">9044511M0300</a><br>Hose (l360)               | <a href="#">Buy now</a> |
| 28  | <a href="#">9046511M2700</a><br>Clamp(6h1)                | <a href="#">Buy now</a> |
| 29  | <a href="#">9046711M0800</a><br>Clip(72x)                 | <a href="#">Buy now</a> |
| 30  | <a href="#">970950601600</a><br>Bolt, hexagon deep recess | <a href="#">Buy now</a> |
| 31  | <a href="#">9038706M3100</a><br>Coller (6a0)              | <a href="#">Buy now</a> |
| 32  | <a href="#">6H3217520000</a><br>Tube, filler 1            | <a href="#">Buy now</a> |
| 33  | <a href="#">9046513M3000</a><br>Clamp                     | <a href="#">Buy now</a> |

# Oil Pump



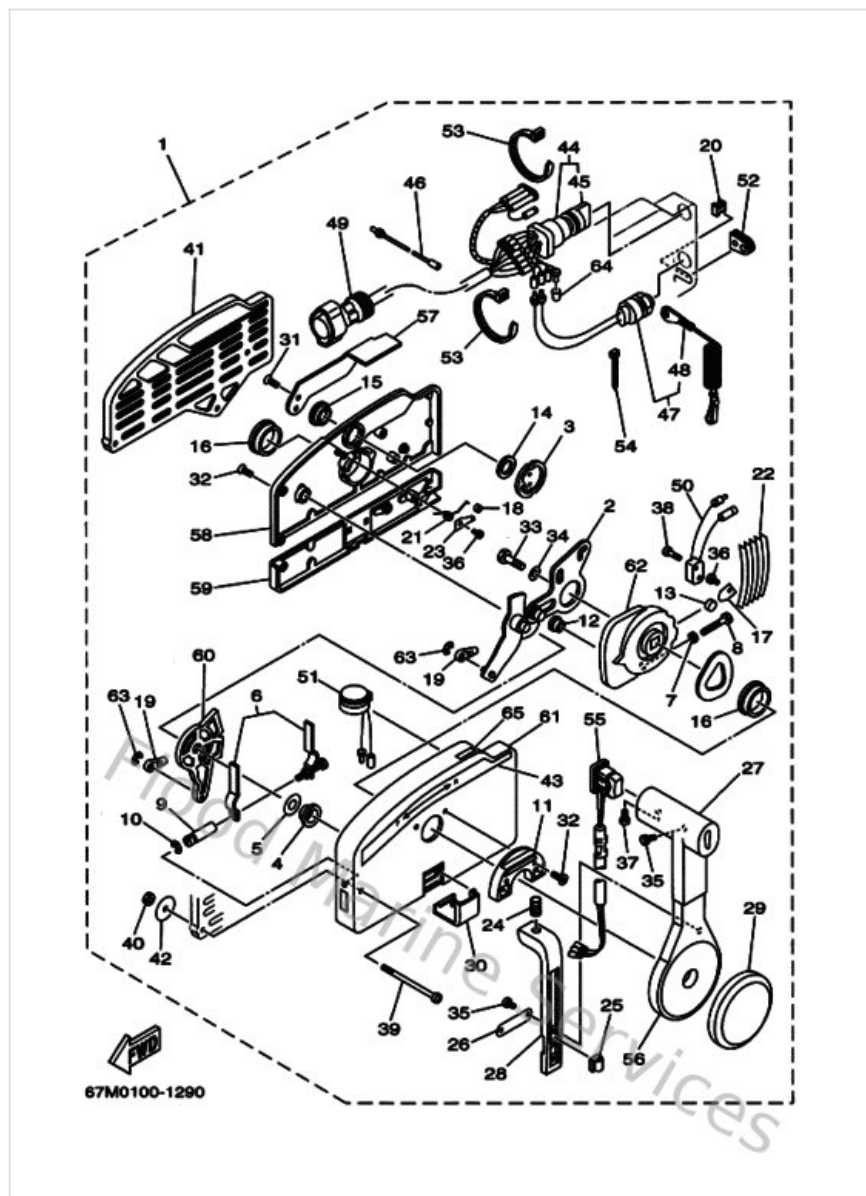
| Ref | Part   |                         |
|-----|--|-------------------------|
| 34  | <a href="#">63D2176M0000</a><br>Hook                   | <a href="#">Buy now</a> |
| 35  | <a href="#">63D2175R0000</a><br>Hook, band             | <a href="#">Buy now</a> |
| 36  | <a href="#">6H4217700000</a><br>Oil tank cap assembly  | <a href="#">Buy now</a> |
| 37  | <a href="#">6J8217580000</a><br>Washer, special 2      | <a href="#">Buy now</a> |
| 38  | <a href="#">6H1217570000</a><br>Washer, special 1      | <a href="#">Buy now</a> |
| 40  | <a href="#">6J8134110000</a><br>Strainer, oil          | <a href="#">Buy now</a> |
| 41  | <a href="#">6J8134140000</a><br>Gasket, strainer cover | <a href="#">Buy now</a> |
| 42  | <a href="#">6H1134350000</a><br>Nipple                 | <a href="#">Buy now</a> |
| 43  | <a href="#">9044508M0100</a><br>Hose (I30)             | <a href="#">Buy now</a> |
| 44  | <a href="#">6H1217660100</a><br>Pipe, oil              | <a href="#">Buy now</a> |
| 45  | <a href="#">904670800400</a><br>Clip, pipe 6162435600  | <a href="#">Buy now</a> |
| 46  | <a href="#">9046712M1100</a><br>Clip(6k8)              | <a href="#">Buy now</a> |
| 47  | <a href="#">6A0823170000</a><br>Damper, ignition coil  | <a href="#">Buy now</a> |
| 48  | <a href="#">903870611900</a><br>Collar                 | <a href="#">Buy now</a> |
| 49  | <a href="#">9011906M6500</a><br>Bolt, with washer      | <a href="#">Buy now</a> |

# Oil Pump



| Ref | Part   |                         |
|-----|--|-------------------------|
| 50  | <a href="#">9011906M8800</a><br>Bolt, with washer        | <a href="#">Buy now</a> |
| 51  | <a href="#">9044511M2100</a><br>Hose (l70)               | <a href="#">Buy now</a> |
| 52  | <a href="#">9046710M0400</a><br>Clip, pipe 1 (6e9)       | <a href="#">Buy now</a> |
| 53  | <a href="#">6J8217440000</a><br>Breather                 | <a href="#">Buy now</a> |
| 54  | <a href="#">9044511M1500</a><br>Hose (l360)              | <a href="#">Buy now</a> |
| 55  | <a href="#">6E5243780000</a><br>Pipe, joint 3            | <a href="#">Buy now</a> |
| 56  | <a href="#">9044610M0100</a><br>Tube (6e5)               | <a href="#">Buy now</a> |
| 57  | <a href="#">9044511M0200</a><br>Hose (l100)              | <a href="#">Buy now</a> |
| 58  | <a href="#">9046411M2300</a><br>Clamp(6h4)               | <a href="#">Buy now</a> |
| 60  | <a href="#">6H3857201600</a><br>Oil level gauge assembly | <a href="#">Buy now</a> |
| 61  | <a href="#">6R582582B000</a><br>Cover, wire harness      | <a href="#">Buy now</a> |

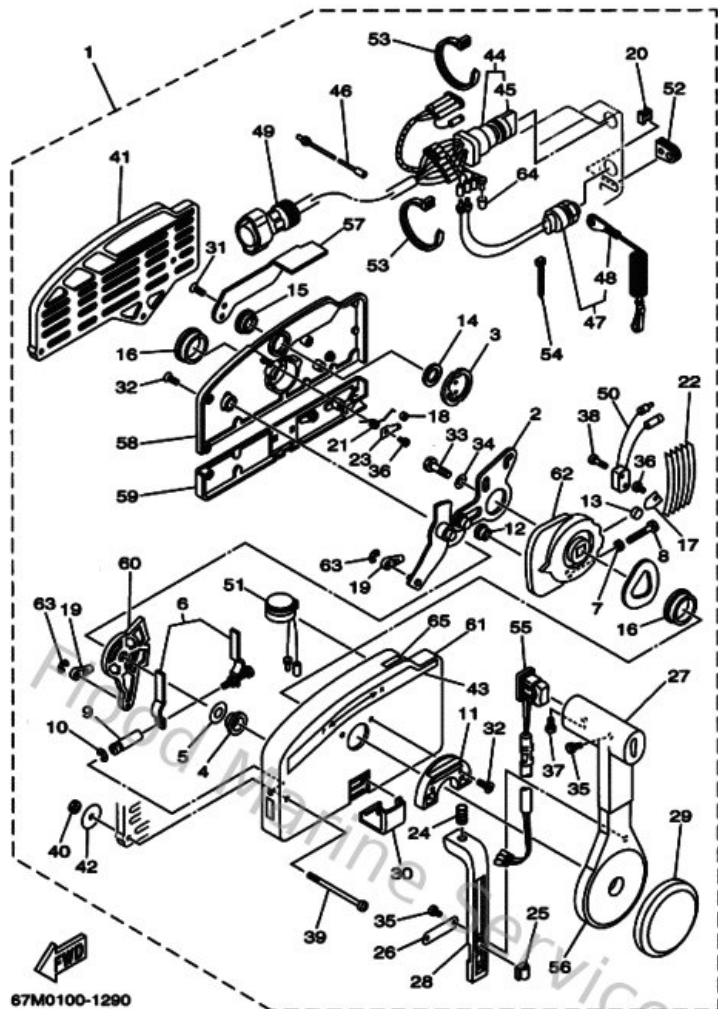
## Remote Control Assy 1



| Ref | Part  |                         |
|-----|---|-------------------------|
| 1   | <a href="#">70348201A100</a><br>Remote control assembly (10p) | <a href="#">Buy now</a> |
| 2   | <a href="#">703482610100</a><br>Arm, throttle                 | <a href="#">Buy now</a> |
| 3   | <a href="#">703481530000</a><br>Shaft, free accel.            | <a href="#">Buy now</a> |
| 4   | <a href="#">703482350000</a><br>Bushing                       | <a href="#">Buy now</a> |
| 5   | <a href="#">703482680000</a><br>Spacer 3                      | <a href="#">Buy now</a> |
| 6   | <a href="#">703482640000</a><br>Throttle, friction            | <a href="#">Buy now</a> |
| 7   | <a href="#">953800560000</a><br>Nut, hexagon (663)            | <a href="#">Buy now</a> |
| 9   | <a href="#">703482650000</a><br>Shaft Friction                | <a href="#">Buy now</a> |
| 10  | <a href="#">934300602400</a><br>Circlip (701)                 | <a href="#">Buy now</a> |
| 11  | <a href="#">703482450000</a><br>Plate, lock                   | <a href="#">Buy now</a> |
| 12  | <a href="#">703482520000</a><br>Roller, cam                   | <a href="#">Buy now</a> |
| 13  | <a href="#">701482480000</a><br>Roller, free accel            | <a href="#">Buy now</a> |
| 14  | <a href="#">703481980000</a><br>Washer, wave 3                | <a href="#">Buy now</a> |
| 15  | <a href="#">703482430000</a><br>Bushing 3                     | <a href="#">Buy now</a> |
| 16  | <a href="#">703482360000</a><br>Bushing                       | <a href="#">Buy now</a> |



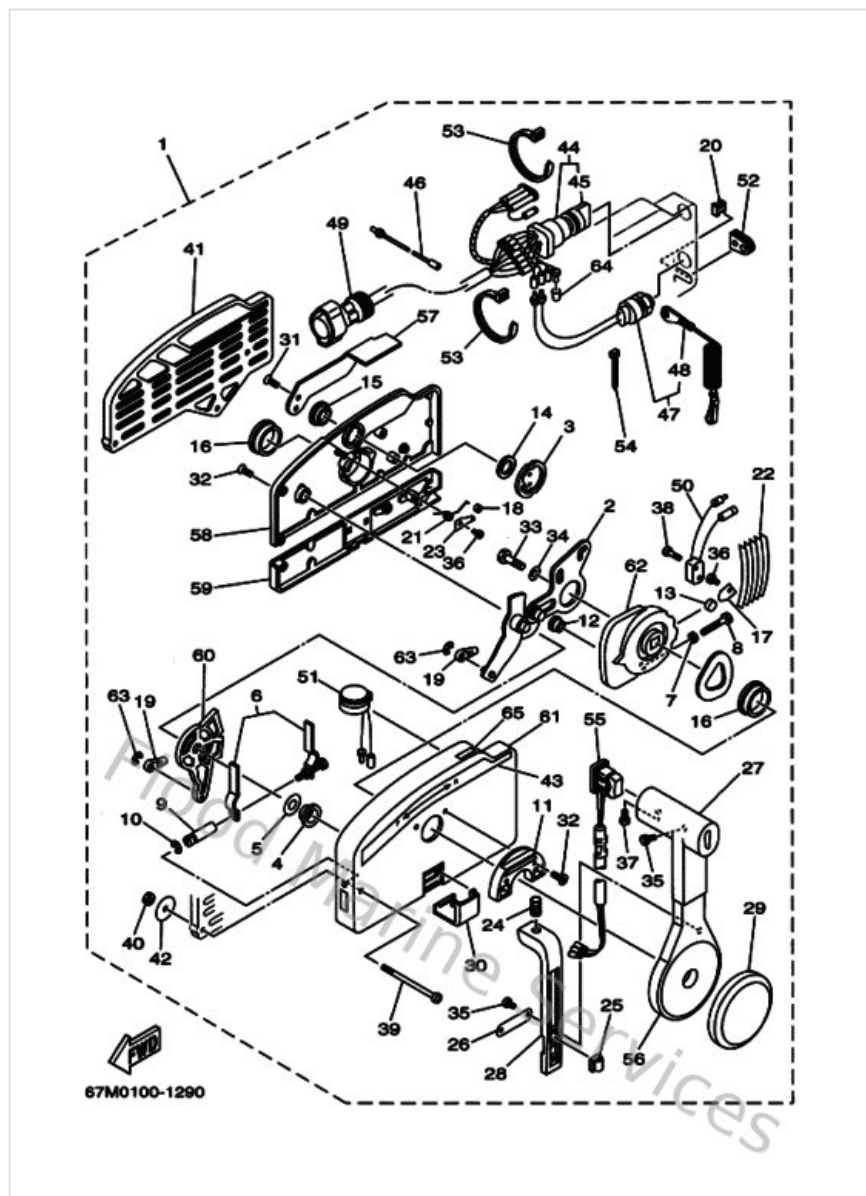
## Remote Control Assy 1



| Ref | Part  |                         |
|-----|---|-------------------------|
| 17  | <a href="#">703481890000</a><br>Retainer                    | <a href="#">Buy now</a> |
| 18  | <a href="#">703482340000</a><br>Roller, detent              | <a href="#">Buy now</a> |
| 19  | <a href="#">703483450100</a><br>Cable end, remote control 2 | <a href="#">Buy now</a> |
| 20  | <a href="#">703483580000</a><br>Anchor, cable               | <a href="#">Buy now</a> |
| 21  | <a href="#">703482440000</a><br>Spring, free accel.         | <a href="#">Buy now</a> |
| 22  | <a href="#">703482380000</a><br>Spring, detent              | <a href="#">Buy now</a> |
| 23  | <a href="#">703482460000</a><br>Spacer 1                    | <a href="#">Buy now</a> |
| 24  | <a href="#">703482270000</a><br>Spring, neutral lock        | <a href="#">Buy now</a> |
| 26  | <a href="#">703482260000</a><br>Plate, stopper              | <a href="#">Buy now</a> |
| 27  | <a href="#">703482220000</a><br>Grip, control lever         | <a href="#">Buy now</a> |
| 28  | <a href="#">703482230000</a><br>Lock, neutral               | <a href="#">Buy now</a> |
| 29  | <a href="#">703482250000</a><br>Cover                       | <a href="#">Buy now</a> |
| 30  | <a href="#">703482190000</a><br>Cover, lead                 | <a href="#">Buy now</a> |
| 31  | <a href="#">703482810000</a><br>Screw, flat head            | <a href="#">Buy now</a> |
| 32  | <a href="#">703482820000</a><br>Screw                       | <a href="#">Buy now</a> |

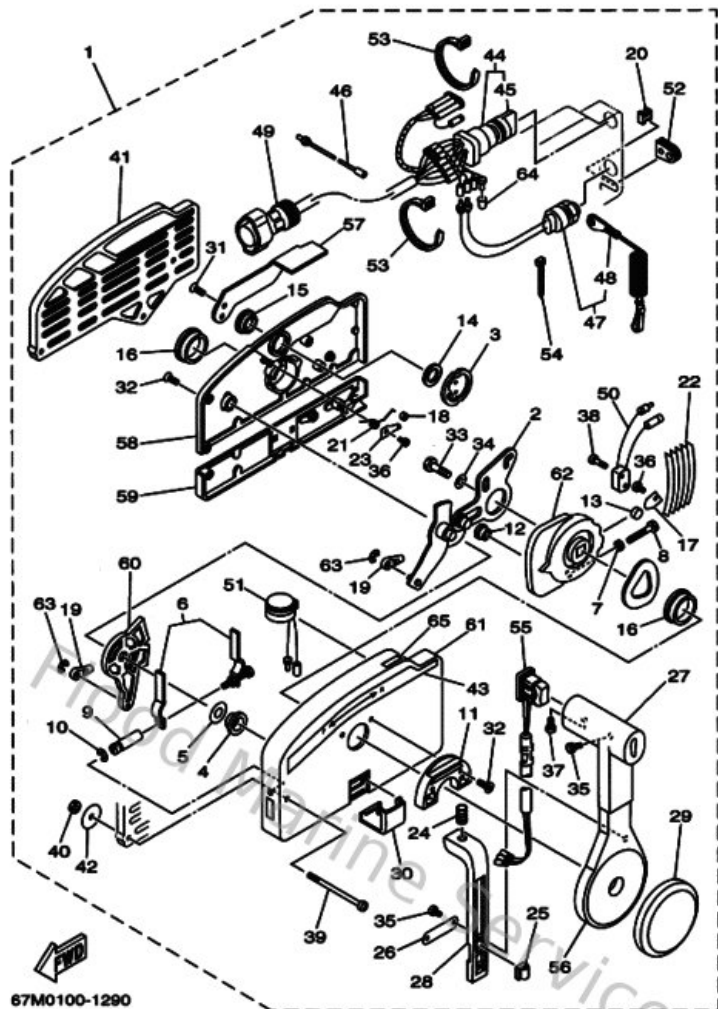


## Remote Control Assy 1



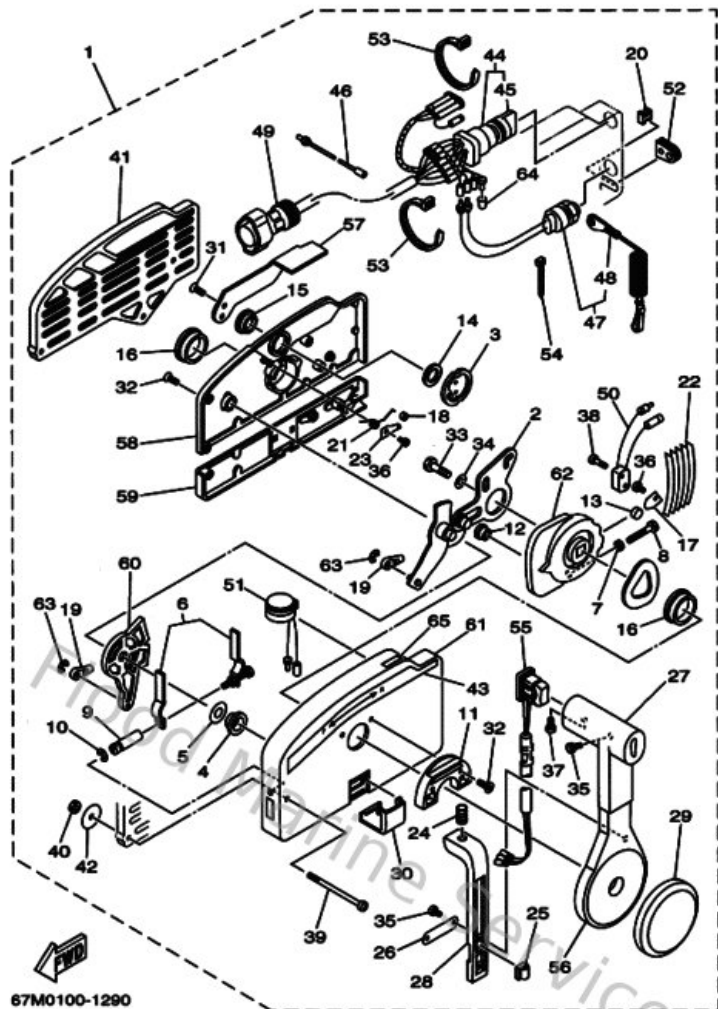
| Ref | Part  |                         |
|-----|---|-------------------------|
| 33  | <a href="#">970950803000</a><br>Bolt, hexagon (fj1)         | <a href="#">Buy now</a> |
| 34  | <a href="#">929900860000</a><br>Washer, plain (663)         | <a href="#">Buy now</a> |
| 35  | <a href="#">985800401000</a><br>Screw, pan head (e56)       | <a href="#">Buy now</a> |
| 36  | <a href="#">985800400600</a><br>Screw, pan head (7h3)       | <a href="#">Buy now</a> |
| 37  | <a href="#">978850501000</a><br>Screw, pan head(62x)        | <a href="#">Buy now</a> |
| 38  | <a href="#">985800301500</a><br>Screw, pan head (n151)      | <a href="#">Buy now</a> |
| 39  | <a href="#">703482911000</a><br>Screw                       | <a href="#">Buy now</a> |
| 40  | <a href="#">953800660000</a><br>Nut(661)                    | <a href="#">Buy now</a> |
| 41  | <a href="#">703482931000</a><br>Spacer, remote control      | <a href="#">Buy now</a> |
| 42  | <a href="#">701482870000</a><br>Washer 1                    | <a href="#">Buy now</a> |
| 43  | <a href="#">703482150000</a><br>Graphic                     | <a href="#">Buy now</a> |
| 44  | <a href="#">703825101300</a><br>Main switch assembly        | <a href="#">Buy now</a> |
| 45  | <a href="#">676825770000</a><br>Cap, key                    | <a href="#">Buy now</a> |
| 46  | <a href="#">703825310000</a><br>Wire, lead                  | <a href="#">Buy now</a> |
| 47  | <a href="#">688825750200</a><br>Engine stop switch assembly | <a href="#">Buy now</a> |

## Remote Control Assy 1



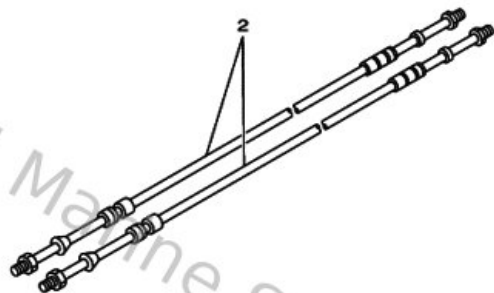
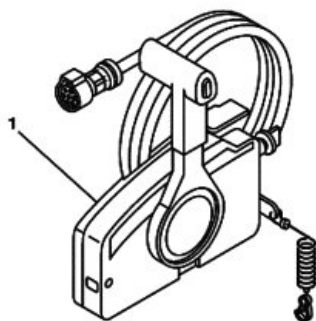
| Ref | Part  |                         |
|-----|---|-------------------------|
| 48  | <a href="#">682825560000</a><br>Lanyard, stop switch          | <a href="#">Buy now</a> |
| 49  | <a href="#">6888258A2000</a><br>10p main harness mec 2m (6ft) | <a href="#">Buy now</a> |
| 50  | <a href="#">703825400000</a><br>Neutral switch assembly       | <a href="#">Buy now</a> |
| 51  | <a href="#">70383383B000</a><br>Buzzer                        | <a href="#">Buy now</a> |
| 52  | <a href="#">703482840000</a><br>Grommet                       | <a href="#">Buy now</a> |
| 53  | <a href="#">904641308000</a><br>Band                          | <a href="#">Buy now</a> |
| 54  | <a href="#">703825920000</a><br>Band                          | <a href="#">Buy now</a> |
| 55  | <a href="#">703482240000</a><br>Cover, control lever          | <a href="#">Buy now</a> |
| 56  | <a href="#">703482210000</a><br>Grip                          | <a href="#">Buy now</a> |
| 57  | <a href="#">703481520000</a><br>Knob, free accel              | <a href="#">Buy now</a> |
| 58  | <a href="#">703482120000</a><br>Rear housing                  | <a href="#">Buy now</a> |
| 59  | <a href="#">703482130000</a><br>Back, panel                   | <a href="#">Buy now</a> |
| 60  | <a href="#">703482710000</a><br>Arm, shift                    | <a href="#">Buy now</a> |
| 61  | <a href="#">703482110100</a><br>Housing,1                     | <a href="#">Buy now</a> |
| 62  | <a href="#">703482320000</a><br>Drive gear                    | <a href="#">Buy now</a> |

## Remote Control Assy 1



| Ref | Part                                    |                         |
|-----|---|-------------------------|
| 64  | <a href="#">703825420000</a><br>Cap     | <a href="#">Buy now</a> |
| 65  | <a href="#">703482180000</a><br>Graphic | <a href="#">Buy now</a> |

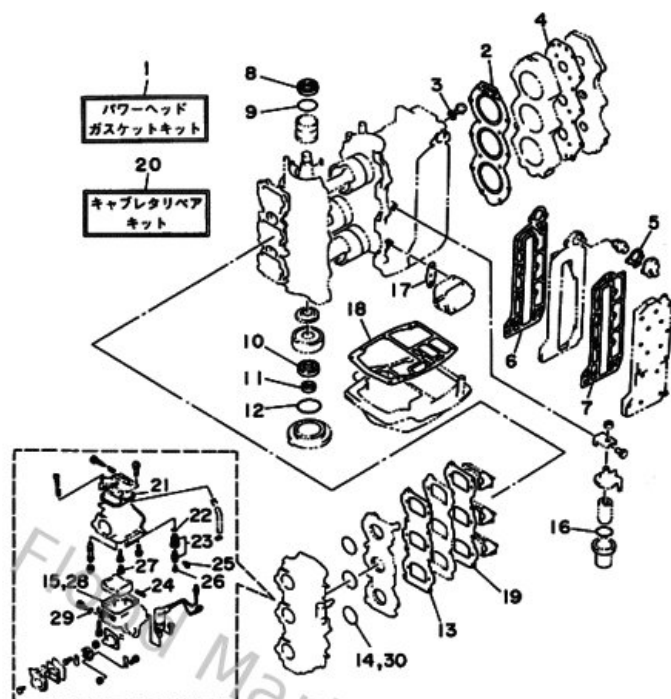
## Remote Control Box



67M0100-8280

| Ref | Part  |                         |
|-----|---|-------------------------|
| 1   | <a href="#">70348201A100</a><br>Remote control assembly (10p) | <a href="#">Buy now</a> |
| 2   | <a href="#">701483208000</a><br>Cable, Remote Control L=17F   | <a href="#">Buy now</a> |

# Repair Kit 1

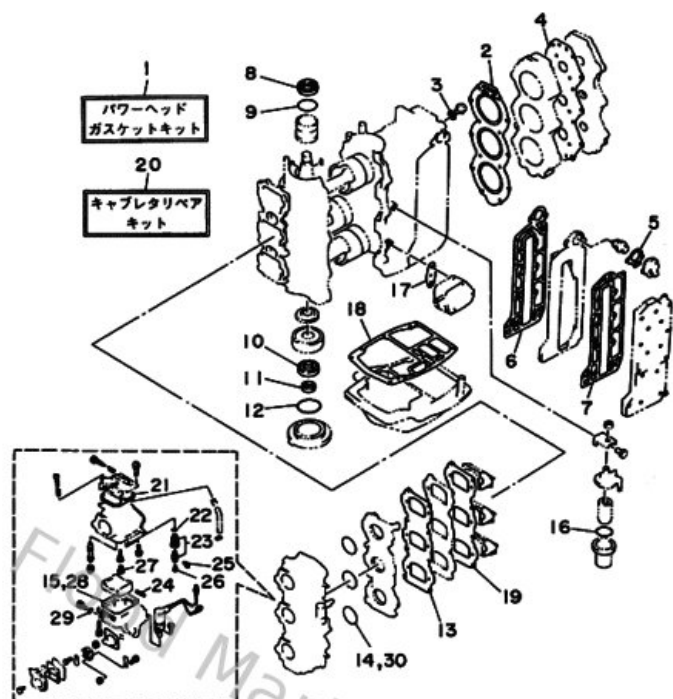


  
6H30010-4230

| Ref | Part  |                         |
|-----|---|-------------------------|
| 1   | <a href="#">6H3W00010200</a><br>Power head gasket kit       | <a href="#">Buy now</a> |
| 2   | <a href="#">6H311181A100</a><br>Gasket, cylinder head 1     | <a href="#">Buy now</a> |
| 3   | <a href="#">904301411500</a><br>Gasket (663)                | <a href="#">Buy now</a> |
| 4   | <a href="#">6H311193A100</a><br>Gasket, head cover 1        | <a href="#">Buy now</a> |
| 5   | <a href="#">62Y124140000</a><br>Gasket, cover               | <a href="#">Buy now</a> |
| 6   | <a href="#">6H341112A000</a><br>Gasket, exhaust inner cover | <a href="#">Buy now</a> |
| 7   | <a href="#">6H341114A000</a><br>Gasket, exhaust outer cover | <a href="#">Buy now</a> |
| 8   | <a href="#">931023635100</a><br>Oil seal(52w)               | <a href="#">Buy now</a> |
| 9   | <a href="#">9321046M1600</a><br>O-ring (688)                | <a href="#">Buy now</a> |
| 10  | <a href="#">9310230M2300</a><br>Oil seal (6h3)              | <a href="#">Buy now</a> |
| 11  | <a href="#">9310618M0100</a><br>Oil seal (6h3)              | <a href="#">Buy now</a> |
| 12  | <a href="#">9321065M5000</a><br>O-ring                      | <a href="#">Buy now</a> |
| 13  | <a href="#">6H313621A100</a><br>Gasket, valve seat          | <a href="#">Buy now</a> |
| 14  | <a href="#">9321039ME400</a><br>O-ring(6h2)                 | <a href="#">Buy now</a> |
| 15  | <a href="#">6H4149840000</a><br>Gasket, float chamber       | <a href="#">Buy now</a> |



# Repair Kit 1

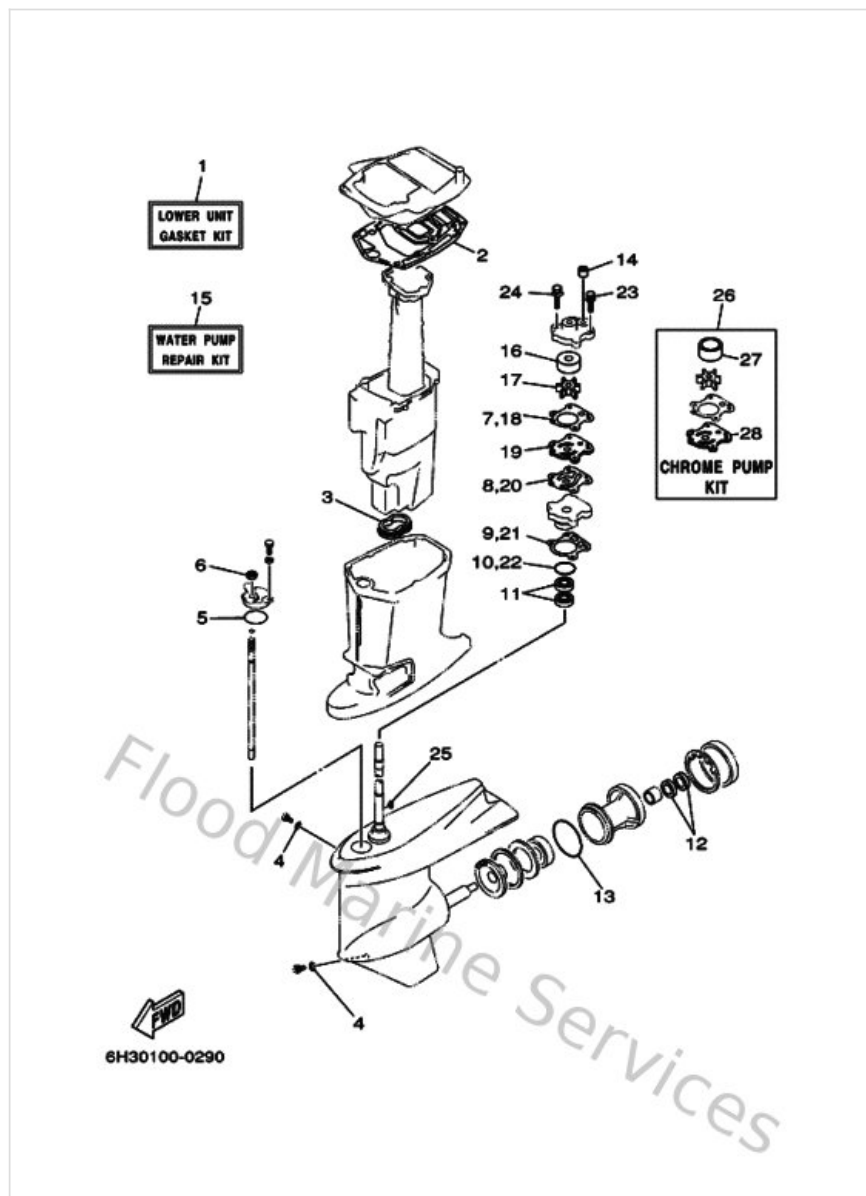


  
6H30010-4230

| Ref | Part  |                         |
|-----|---|-------------------------|
| 16  | <a href="#">932103273800</a><br>O-ring(1wg)           | <a href="#">Buy now</a> |
| 17  | <a href="#">65024431A000</a><br>Gasket,fuel pump      | <a href="#">Buy now</a> |
| 18  | <a href="#">6H345113A000</a><br>Gasket, upper casing  | <a href="#">Buy now</a> |
| 19  | <a href="#">6H313622A100</a><br>Gasket, valve seat    | <a href="#">Buy now</a> |
| 20  | <a href="#">6H2W00931000</a><br>Carburetor repair kit | <a href="#">Buy now</a> |
| 21  | <a href="#">6H4141470000</a><br>O-ring                | <a href="#">Buy now</a> |
| 22  | <a href="#">932100422800</a><br>O-ring (371)          | <a href="#">Buy now</a> |
| 23  | <a href="#">6H3145900000</a><br>Needle valve assembly | <a href="#">Buy now</a> |
| 24  | <a href="#">6H4145480000</a><br>Pin, float arm        | <a href="#">Buy now</a> |
| 25  | <a href="#">663141590000</a><br>Clip                  | <a href="#">Buy now</a> |
| 26  | <a href="#">676141860000</a><br>Pin, valve            | <a href="#">Buy now</a> |
| 27  | <a href="#">676149660000</a><br>Rubber cap            | <a href="#">Buy now</a> |
| 29  | <a href="#">932100423000</a><br>O-ring (371)          | <a href="#">Buy now</a> |

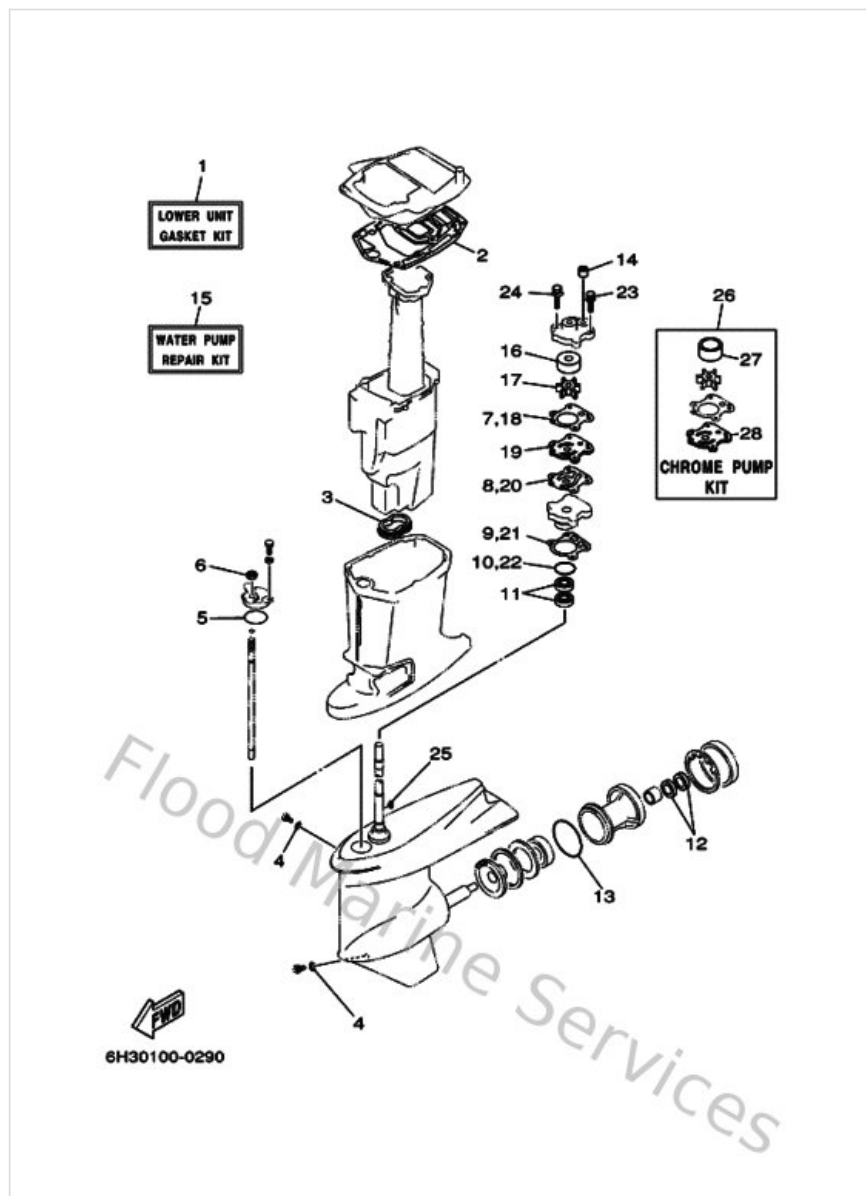


## Repair Kit 2



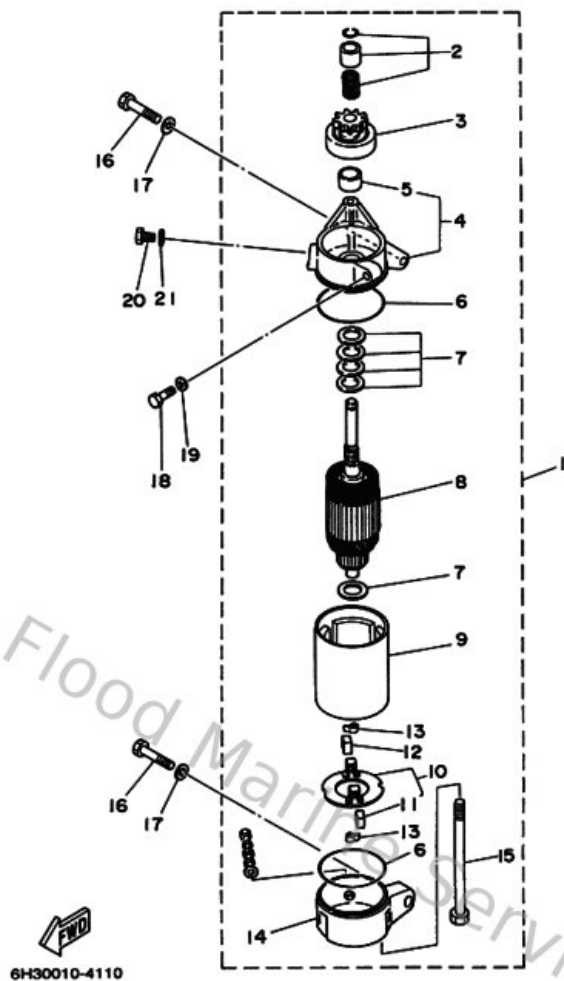
| Ref | Part   |                         |
|-----|--|-------------------------|
| 1   | <a href="#">6H3W00012200</a><br>Lower unit gasket kit        | <a href="#">Buy now</a> |
| 2   | <a href="#">6H345114A100</a><br>Gasket, upper casing         | <a href="#">Buy now</a> |
| 3   | <a href="#">6H3451230000</a><br>Gasket, muffler              | <a href="#">Buy now</a> |
| 4   | <a href="#">904300802000</a><br>Gasket                       | <a href="#">Buy now</a> |
| 5   | <a href="#">932104904600</a><br>O-ring (620)                 | <a href="#">Buy now</a> |
| 6   | <a href="#">931060901400</a><br>Oil seal                     | <a href="#">Buy now</a> |
| 7   | <a href="#">6H344315A000</a><br>Gasket, water pump 1         | <a href="#">Buy now</a> |
| 8   | <a href="#">6H344324A000</a><br>Gasket, cartridge Out, plate | <a href="#">Buy now</a> |
| 9   | <a href="#">68844316A000</a><br>Gasket, water pump 2         | <a href="#">Buy now</a> |
| 10  | <a href="#">932104604400</a><br>O-ring                       | <a href="#">Buy now</a> |
| 11  | <a href="#">931012307000</a><br>Oil seal (663)               | <a href="#">Buy now</a> |
| 12  | <a href="#">9310125M0300</a><br>Oil seal                     | <a href="#">Buy now</a> |
| 13  | <a href="#">9321085M9700</a><br>O-ring(6h1)                  | <a href="#">Buy now</a> |
| 14  | <a href="#">663443660000</a><br>Damper, water seal 2         | <a href="#">Buy now</a> |
| 15  | <a href="#">6H3W00780200</a><br>Water pump repair kit        | <a href="#">Buy now</a> |

## Repair Kit 2



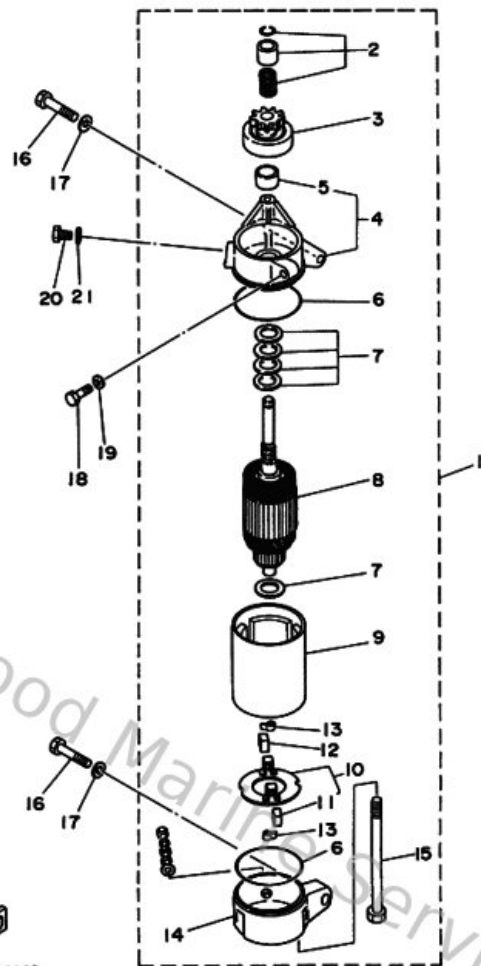
| Ref | Part   |                         |
|-----|--|-------------------------|
| 16  | <a href="#">663443220000</a><br>Insert, cartridge      | <a href="#">Buy now</a> |
| 17  | <a href="#">6H3443520000</a><br>Impellar               | <a href="#">Buy now</a> |
| 19  | <a href="#">6H3443230000</a><br>Outer plate, cartridge | <a href="#">Buy now</a> |
| 23  | <a href="#">9011908M1400</a><br>Bolt, with washer      | <a href="#">Buy now</a> |
| 24  | <a href="#">9011908M3300</a><br>Bolt, with washer(6b0) | <a href="#">Buy now</a> |
| 25  | <a href="#">9028003M0300</a><br>Key, woodruff (697)    | <a href="#">Buy now</a> |
| 26  | <a href="#">6H3W00781A00</a><br>Chrome pump kit        | <a href="#">Buy now</a> |
| 27  | <a href="#">663443224000</a><br>Insert, cartridge      | <a href="#">Buy now</a> |
| 28  | <a href="#">6H3443234000</a><br>Outer plate, cartridge | <a href="#">Buy now</a> |

# Starting Motor



| Ref | Part  |                         |
|-----|---|-------------------------|
| 1   | <a href="#">6H3818001100</a><br>Starting motor assembly | <a href="#">Buy now</a> |
| 2   | <a href="#">689818571100</a><br>Pinion stopper set      | <a href="#">Buy now</a> |
| 3   | <a href="#">6H3818071000</a><br>Pinion assembly         | <a href="#">Buy now</a> |
| 4   | <a href="#">6H3818301000</a><br>Front cover assembly    | <a href="#">Buy now</a> |
| 5   | <a href="#">689818310000</a><br>Metal, front            | <a href="#">Buy now</a> |
| 6   | <a href="#">689818471100</a><br>O-ring                  | <a href="#">Buy now</a> |
| 7   | <a href="#">689818091100</a><br>Washer kit              | <a href="#">Buy now</a> |
| 8   | <a href="#">689818501200</a><br>Armature assembly       | <a href="#">Buy now</a> |
| 9   | <a href="#">6H3818101000</a><br>Stator assembly         | <a href="#">Buy now</a> |
| 10  | <a href="#">689818401100</a><br>Brush holder assembly   | <a href="#">Buy now</a> |
| 11  | <a href="#">689818121100</a><br>Brush 2                 | <a href="#">Buy now</a> |
| 12  | <a href="#">689818111100</a><br>Brush 1                 | <a href="#">Buy now</a> |
| 13  | <a href="#">689818131000</a><br>Spring, brush           | <a href="#">Buy now</a> |
| 14  | <a href="#">6H3818201100</a><br>Rear cover assembly     | <a href="#">Buy now</a> |
| 15  | <a href="#">689818261000</a><br>Bolt                    | <a href="#">Buy now</a> |

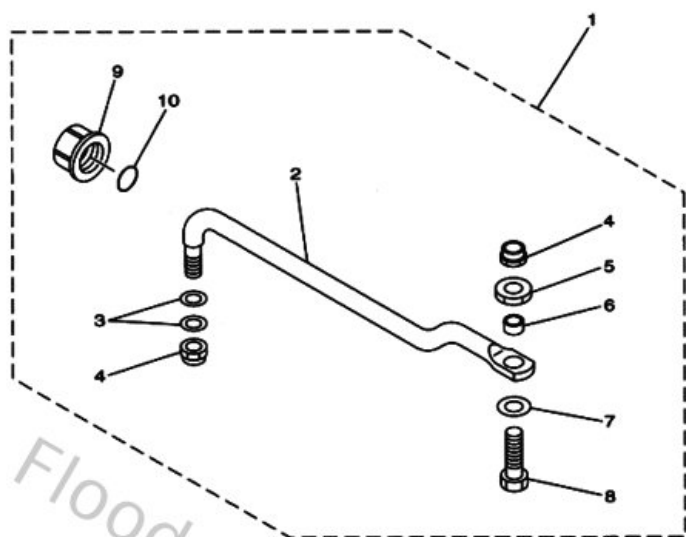
# Starting Motor



6H30010-4110

| Ref | Part  |                         |
|-----|---|-------------------------|
| 16  | <a href="#">970130803500</a><br>Bolt                | <a href="#">Buy now</a> |
| 17  | <a href="#">929030860000</a><br>Washer, plain (663) | <a href="#">Buy now</a> |
| 18  | <a href="#">970130602500</a><br>Bolt(62y)           | <a href="#">Buy now</a> |
| 19  | <a href="#">929900660000</a><br>Washer, plain (646) | <a href="#">Buy now</a> |
| 20  | <a href="#">970130801600</a><br>Bolt, hexagon       | <a href="#">Buy now</a> |

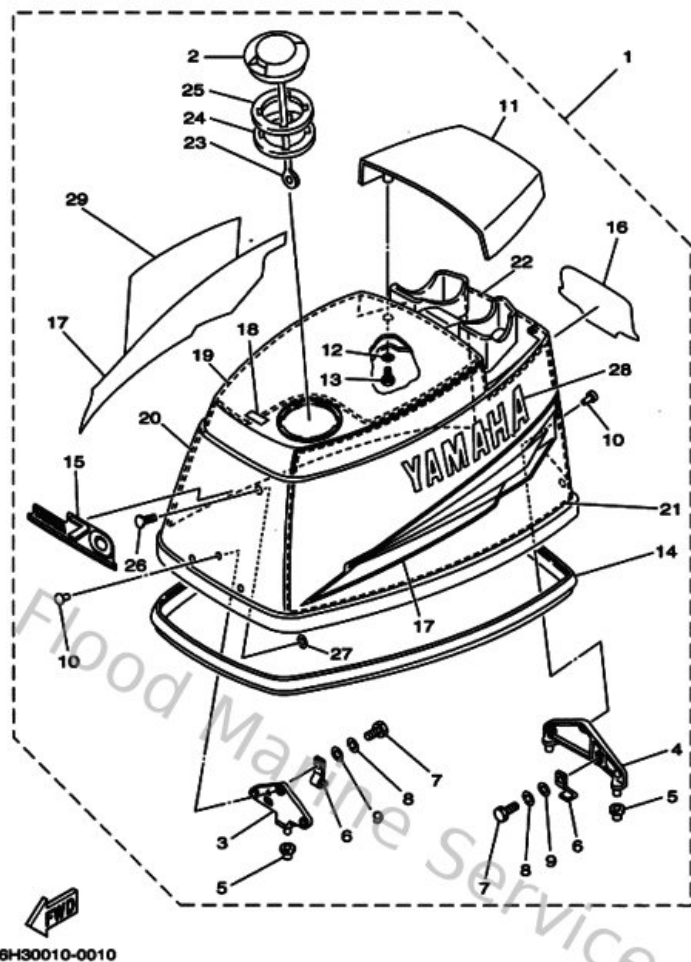
## Steering Guide



6880700-9190

| Ref | Part  |                         |
|-----|---|-------------------------|
| 1   | <a href="#">688613501000</a><br>Steering guide attachment kit | <a href="#">Buy now</a> |
| 2   | <a href="#">688613511000</a><br>Rod, steering link            | <a href="#">Buy now</a> |
| 3   | <a href="#">9020110M2000</a><br>Washer, plate (663)           | <a href="#">Buy now</a> |
| 4   | <a href="#">9018509M0100</a><br>Nut, nylon (663)              | <a href="#">Buy now</a> |
| 5   | <a href="#">9017009M0300</a><br>Nut (689)                     | <a href="#">Buy now</a> |
| 6   | <a href="#">9038710M4200</a><br>Coller (688)                  | <a href="#">Buy now</a> |
| 7   | <a href="#">9020110M6300</a><br>Washer, plate                 | <a href="#">Buy now</a> |
| 8   | <a href="#">6E5613550000</a><br>Bolt                          | <a href="#">Buy now</a> |
| 9   | <a href="#">6E5431450100</a><br>Cap, clamp bracket            | <a href="#">Buy now</a> |
| 10  | <a href="#">932101627500</a><br>O-ring                        | <a href="#">Buy now</a> |

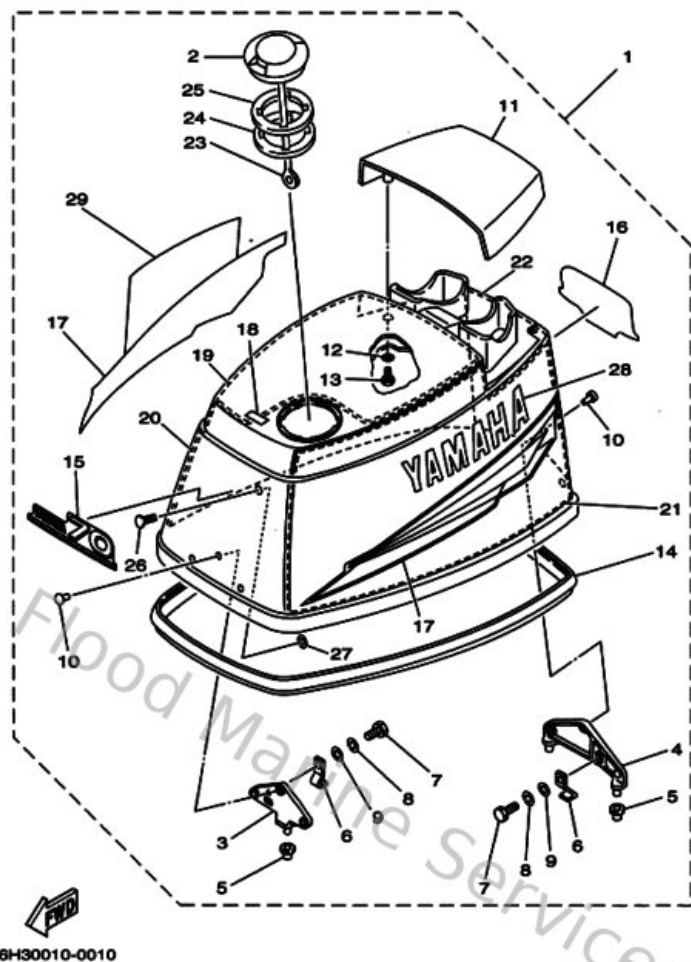
## Top Cowling



| Ref | Part  |                         |
|-----|---|-------------------------|
| 1   | <a href="#">6H342610304D</a><br>Top Cowling assembly      | <a href="#">Buy now</a> |
| 2   | <a href="#">63D2177H0000</a><br>Disk cap 2                | <a href="#">Buy now</a> |
| 3   | <a href="#">6H3426470000</a><br>Holder, clamp band        | <a href="#">Buy now</a> |
| 4   | <a href="#">6H3426490094</a><br>Holder, clamp band        | <a href="#">Buy now</a> |
| 5   | <a href="#">663426620000</a><br>Damper                    | <a href="#">Buy now</a> |
| 6   | <a href="#">6H3426520000</a><br>Hook 2                    | <a href="#">Buy now</a> |
| 7   | <a href="#">970950601600</a><br>Bolt, hexagon deep recess | <a href="#">Buy now</a> |
| 8   | <a href="#">929950610000</a><br>Washer(6a1)               | <a href="#">Buy now</a> |
| 9   | <a href="#">929950660000</a><br>Washer, plain (646)       | <a href="#">Buy now</a> |
| 10  | <a href="#">902660600900</a><br>Rivet (697)               | <a href="#">Buy now</a> |
| 11  | <a href="#">6H342613014D</a><br>Molding air duct          | <a href="#">Buy now</a> |
| 14  | <a href="#">6H3426150000</a><br>Seal                      | <a href="#">Buy now</a> |
| 15  | <a href="#">6H3426781000</a><br>Graphic, rear             | <a href="#">Buy now</a> |
| 16  | <a href="#">6H3426783000</a><br>Graphic, rear             | <a href="#">Buy now</a> |
| 17  | <a href="#">6H3W00703000</a><br>Graphic set               | <a href="#">Buy now</a> |

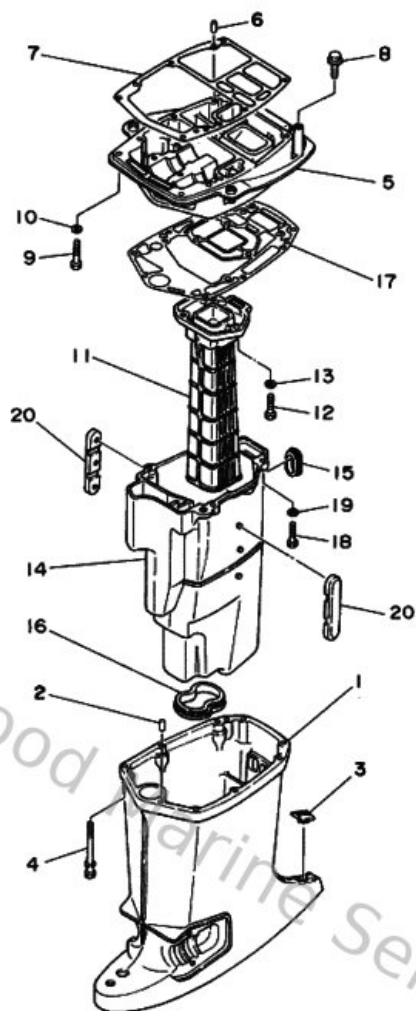


## Top Cowling



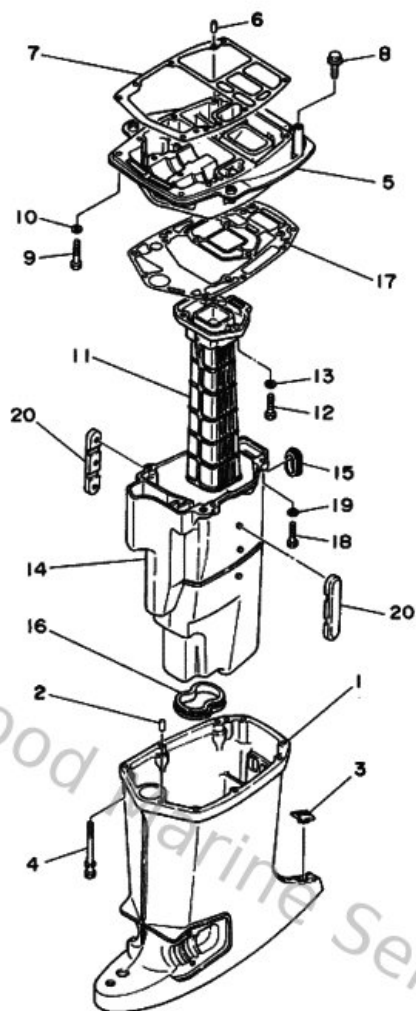
| Ref | Part   |                         |
|-----|--|-------------------------|
| 18  | <a href="#">6H3134360000</a><br>Mark             | <a href="#">Buy now</a> |
| 19  | <a href="#">689W42662000</a><br>Damper, Form     | <a href="#">Buy now</a> |
| 20  | <a href="#">6H3426190000</a><br>Damper (350x640) | <a href="#">Buy now</a> |
| 21  | <a href="#">689W42664000</a><br>Damper (350x640) | <a href="#">Buy now</a> |
| 22  | <a href="#">6H3426370000</a><br>Damper, Form     | <a href="#">Buy now</a> |
| 23  | <a href="#">6H1426940000</a><br>Band             | <a href="#">Buy now</a> |
| 24  | <a href="#">6H3217320000</a><br>Seal 1           | <a href="#">Buy now</a> |
| 25  | <a href="#">6H3217350000</a><br>Seal 2           | <a href="#">Buy now</a> |
| 26  | <a href="#">9033805M0300</a><br>Plug (6h1)       | <a href="#">Buy now</a> |
| 27  | <a href="#">9018305M0600</a><br>Nut, spring(6h4) | <a href="#">Buy now</a> |
| 28  | <a href="#">6H3426813000</a><br>Mark, cowling    | <a href="#">Buy now</a> |
| 29  | <a href="#">6H3426823000</a><br>Mark, cowling    | <a href="#">Buy now</a> |

## Upper Casing



| Ref | Part   |                         |
|-----|--|-------------------------|
| 1   | <a href="#">6H34511114D</a><br>Casing, upper           | <a href="#">Buy now</a> |
| 2   | <a href="#">936061201900</a><br>Pin, dowel (614)       | <a href="#">Buy now</a> |
| 3   | <a href="#">6H3451550000</a><br>Cap                    | <a href="#">Buy now</a> |
| 4   | <a href="#">9011908M8100</a><br>Bolt, with washer      | <a href="#">Buy now</a> |
| 5   | <a href="#">6H34113701CA</a><br>Guide, exhaust         | <a href="#">Buy now</a> |
| 7   | <a href="#">6H345113A000</a><br>Gasket, upper casing   | <a href="#">Buy now</a> |
| 8   | <a href="#">9011908M7900</a><br>Bolt, hexagon (fj1)    | <a href="#">Buy now</a> |
| 9   | <a href="#">970750803500</a><br>Bolt(70w)              | <a href="#">Buy now</a> |
| 10  | <a href="#">929900810000</a><br>Ybs67-8 washer, spring | <a href="#">Buy now</a> |
| 11  | <a href="#">6H341131005B</a><br>Manifold, ext          | <a href="#">Buy now</a> |
| 12  | <a href="#">970750803000</a><br>Bolt, hexagon (fj1)    | <a href="#">Buy now</a> |
| 13  | <a href="#">929950810000</a><br>Ybs67-8 washer, spring | <a href="#">Buy now</a> |
| 14  | <a href="#">6H31471111CA</a><br>Muffler 1              | <a href="#">Buy now</a> |
| 15  | <a href="#">6H3451270000</a><br>Seal 1                 | <a href="#">Buy now</a> |
| 16  | <a href="#">6H3451230000</a><br>Gasket, muffler        | <a href="#">Buy now</a> |

## Upper Casing



| Ref | Part   |                         |
|-----|--|-------------------------|
| 17  | <a href="#">6H345114A100</a><br>Gasket, upper casing | <a href="#">Buy now</a> |
| 20  | <a href="#">6H3147371000</a><br>Damper, muffler      | <a href="#">Buy now</a> |

# Disclaimer

This document is provided for convenience only. It is **not** an official Yamaha publication and is **not supplied, endorsed, or approved** by Yamaha Motor Co., Ltd.

Reasonable efforts are made to keep information accurate; however diagrams, part references, supersessions, descriptions, and applicability may contain errors or omissions. Specifications and part availability may change without notice.

You are responsible for confirming the correct parts for your engine (including model code, year, serial range, and any superseded part numbers) before ordering or fitting.