



# Yamaha F13.5AEP 2006

## Parts Manual

[www.floodmarine.co.uk](http://www.floodmarine.co.uk)

+44 2882 246 539

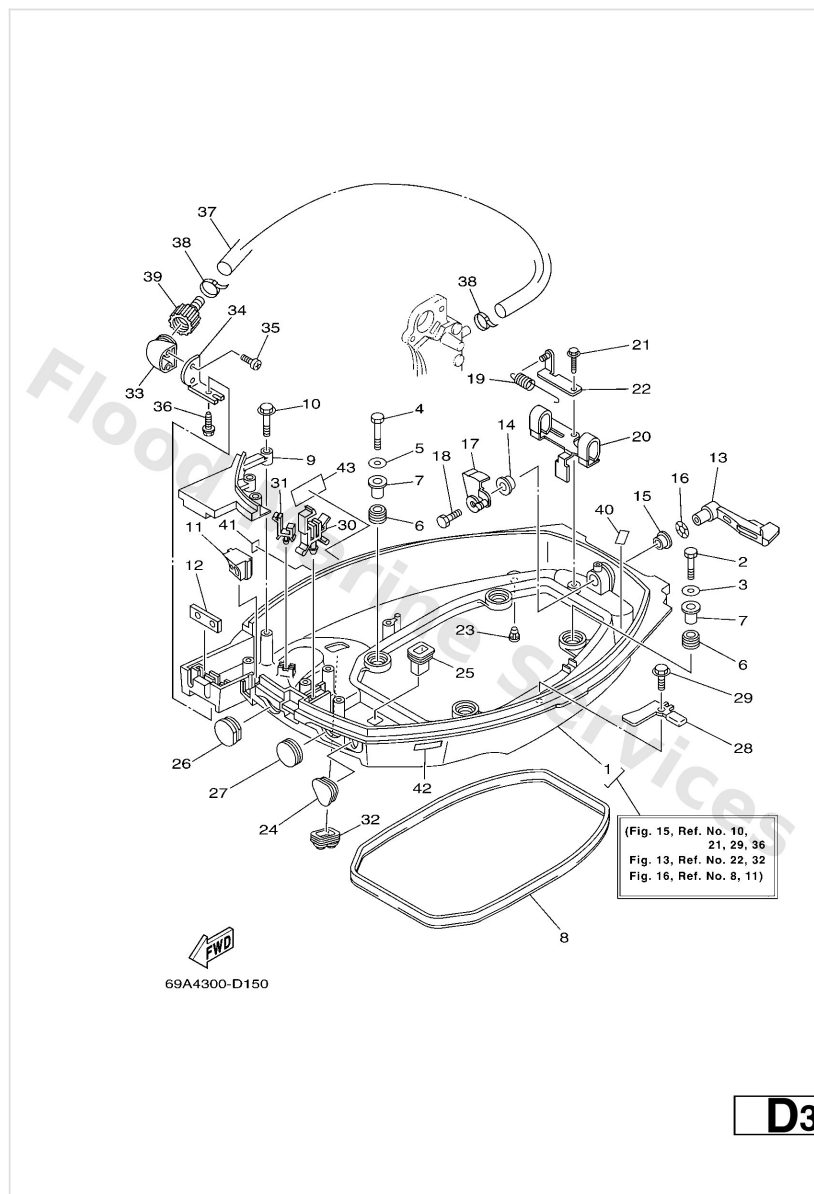
Authorised Yamaha Dealers



# Contents

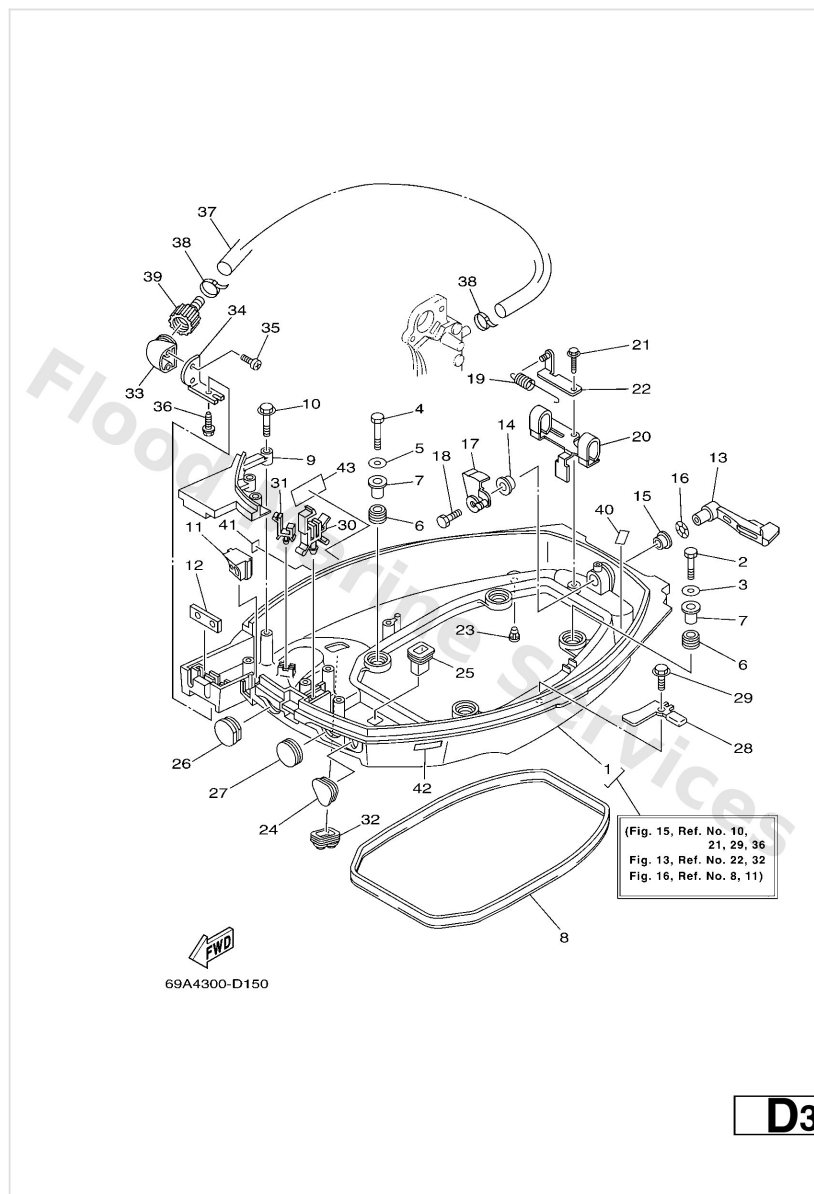
<b>BOTTOM COWLING</b>	3
<b>BRACKET 1</b>	6
<b>BRACKET 2</b>	9
<b>CARBURETOR</b>	12
<b>CONTROL</b>	15
<b>CRANKSHAFT &amp; PISTON</b>	18
<b>CYLINDER &amp; CRANKCASE 1</b>	20
<b>CYLINDER &amp; CRANKCASE 2</b>	23
<b>ELECTRICAL 1</b>	25
<b>ELECTRICAL 2</b>	27
<b>FUEL</b>	30
<b>FUEL TANK</b>	33
<b>GENERATOR</b>	34
<b>INTAKE</b>	35
<b>LOWER CASING &amp; DRIVE 1</b>	37
<b>LOWER CASING &amp; DRIVE 2</b>	42
<b>OIL PAN</b>	44
<b>OIL PUMP</b>	46
<b>POWER TILT ASSY</b>	48
<b>REMOTE CONTROL ASSY</b>	53
<b>REMOTE CONTROL BOX</b>	58
<b>REPAIR KIT 1</b>	59
<b>REPAIR KIT 2</b>	61
<b>REPAIR KIT 3</b>	62
<b>STARTER</b>	64
<b>STARTING MOTOR</b>	66
<b>STEERING GUIDE</b>	67
<b>TOP COWLING</b>	68
<b>UPPER CASING</b>	70
<b>VALVE</b>	71

# Bottom Cowling



Ref	Part	
1	<a href="#">69A42710134D</a> Bottom cowling assembly WITH TAPPING BOLT	<a href="#">Buy now</a>
2	<a href="#">9709506035</a> Bolt(j52)	<a href="#">Buy now</a>
3	<a href="#">9299506600</a> Washer, plain (646)	<a href="#">Buy now</a>
4	<a href="#">9709506025</a> Bolt	<a href="#">Buy now</a>
6	<a href="#">9048015M31</a> Grommet (6g1)	<a href="#">Buy now</a>
7	<a href="#">9038706034</a> Collar (6g1)	<a href="#">Buy now</a>
8	<a href="#">66M4271600</a> Rubber, seal 1	<a href="#">Buy now</a>
9	<a href="#">66M42738004D</a> Plate, fitting	<a href="#">Buy now</a>
10	<a href="#">9010906M82</a> Bolt	<a href="#">Buy now</a>
11	<a href="#">66M4272520</a> Grommet	<a href="#">Buy now</a>
12	<a href="#">62Y4272700</a> Grommet	<a href="#">Buy now</a>
13	<a href="#">6D442815004D</a> Lever, clamp 1	<a href="#">Buy now</a>
14	<a href="#">9038612M37</a> Bushing (6f5)	<a href="#">Buy now</a>
15	<a href="#">9038612MA2</a> Bush	<a href="#">Buy now</a>
16	<a href="#">9020612052</a> Washer, wave (666)	<a href="#">Buy now</a>

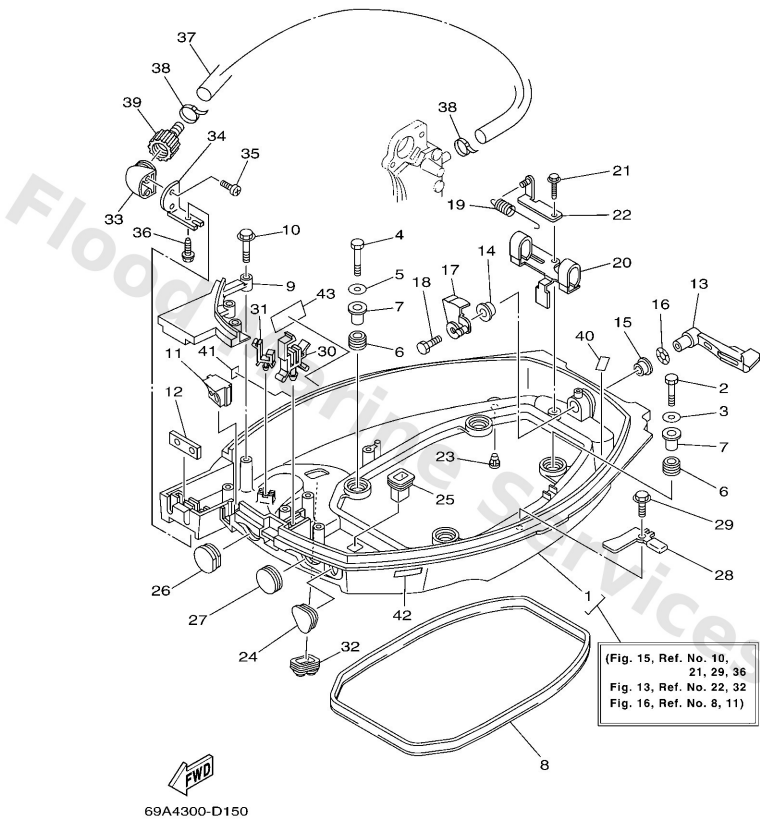
# Bottom Cowling



Ref	Part	
17	<a href="#">6D44281600</a> Lever, Clamp	<a href="#">Buy now</a>
18	<a href="#">9709506012</a> Bolt(gh1)	<a href="#">Buy now</a>
19	<a href="#">9050618010</a> Spring Tension	<a href="#">Buy now</a>
20	<a href="#">6D44276600</a> Bracket 2	<a href="#">Buy now</a>
21	<a href="#">9010906M81</a> Bolt	<a href="#">Buy now</a>
22	<a href="#">6D44314400</a> Hook Spring	<a href="#">Buy now</a>
23	<a href="#">6H34439101</a> Nipple, hose	<a href="#">Buy now</a>
24	<a href="#">65W2632610</a> Grommet	<a href="#">Buy now</a>
25	<a href="#">6824272700</a> Grommet	<a href="#">Buy now</a>
26	<a href="#">6824272400</a> Grommet	<a href="#">Buy now</a>
27	<a href="#">65W4272610</a> Grommet	<a href="#">Buy now</a>
28	<a href="#">66M4274300</a> Bracket	<a href="#">Buy now</a>
36	<a href="#">9010906M86</a> Bolt <b>FLUSHING KIT</b>	<a href="#">Buy now</a>
30	<a href="#">9046525M95</a> Clamp	<a href="#">Buy now</a>
31	<a href="#">9046409M13</a> Clamp (6h1)	<a href="#">Buy now</a>



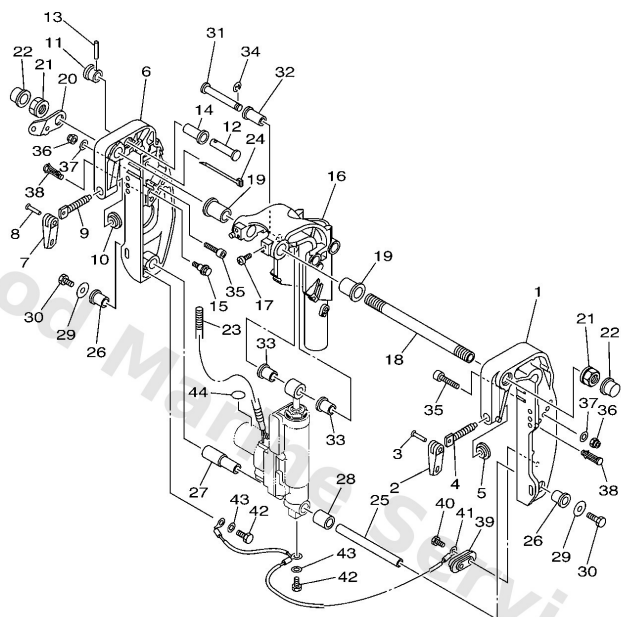
# Bottom Cowling



**D3**

Ref	Part	
32	<a href="#">6H14272621</a> Grommet FLUSHING KIT	<a href="#">Buy now</a>
33	<a href="#">68T1257200</a> Adapter FLUSHING KIT	<a href="#">Buy now</a>
34	<a href="#">69W1253500</a> Plate FLUSHING KIT	<a href="#">Buy now</a>
35	<a href="#">9016706002</a> Screw, tapping FLUSHING KIT	<a href="#">Buy now</a>
37	<a href="#">66M1248100</a> Pipe 1 FLUSHING KIT	<a href="#">Buy now</a>
38	<a href="#">9046511M10</a> Clamp FLUSHING KIT	<a href="#">Buy now</a>
39	<a href="#">6R31258000</a> Joint assembly FLUSHING KIT	<a href="#">Buy now</a>
40	<a href="#">62Y8237700</a> Label	<a href="#">Buy now</a>
41	<a href="#">6A12817600</a> Label Caution	<a href="#">Buy now</a>
42	<a href="#">6E38257H00</a> Plate Mark	<a href="#">Buy now</a>
43	<a href="#">6G81344451</a> Mark	<a href="#">Buy now</a>

# Bracket 1

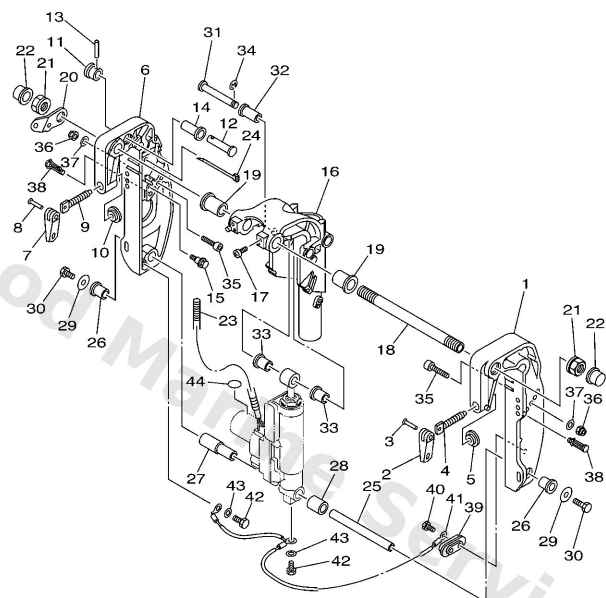


69A1300-2170

**D7**

Ref	Part	
1	<a href="#">69A43111004D</a> Bracket, clamp 1	<a href="#">Buy now</a>
2	<a href="#">6E04311801</a> Handle, transom clamp	<a href="#">Buy now</a>
3	<a href="#">9024304M01</a> Pin(6a1)	<a href="#">Buy now</a>
4	<a href="#">6E74311600</a> Screw, transom clamp	<a href="#">Buy now</a>
5	<a href="#">6484311401</a> Pad, transom clamp	<a href="#">Buy now</a>
6	<a href="#">69A43112004D</a> Bracket, clamp 2	<a href="#">Buy now</a>
11	<a href="#">65W4319200</a> Knob, stopper	<a href="#">Buy now</a>
12	<a href="#">65W4319100</a> Shaft, stopper	<a href="#">Buy now</a>
13	<a href="#">9169030018</a> 926-51502-00 pin, spring (700)	<a href="#">Buy now</a>
14	<a href="#">9038614MA1</a> Bush	<a href="#">Buy now</a>
15	<a href="#">9010906M04</a> Bolt	<a href="#">Buy now</a>
16	<a href="#">69A43311004D</a> Bracket, Swivel 1 S (17.4")	<a href="#">Buy now</a>
16	<a href="#">69A43311104D</a> Bracket, swivel 1 L (22.4")	<a href="#">Buy now</a>
17	<a href="#">9788508010</a> Rivet	<a href="#">Buy now</a>
18	<a href="#">69A4313100</a> Bolt, clamp bracket	<a href="#">Buy now</a>

# Bracket 1

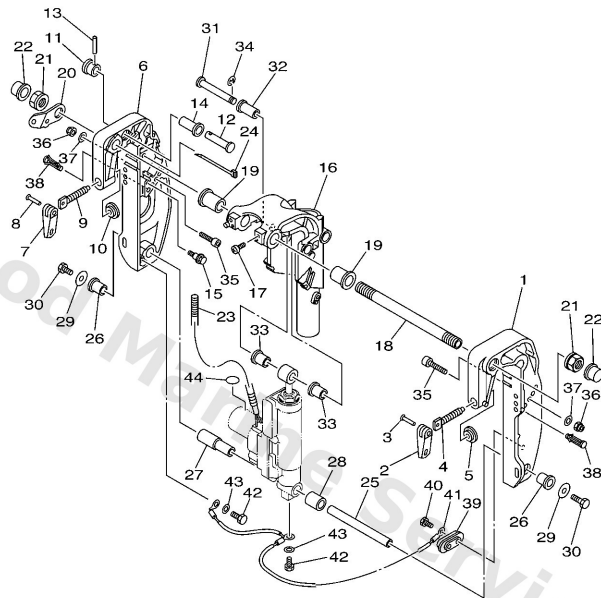


FWD  
69A1300-2170

**D7**

Ref	Part	
19	<a href="#">9038622MA4</a> Bush	<a href="#">Buy now</a>
20	<a href="#">69A4311300</a> Plate, clamp bracket	<a href="#">Buy now</a>
21	<a href="#">9018522043</a> Nut, self-locking	<a href="#">Buy now</a>
22	<a href="#">6G54314501</a> Cap, clamp bracket	<a href="#">Buy now</a>
23	<a href="#">9044614MH7</a> Hose	<a href="#">Buy now</a>
24	<a href="#">9046513M97</a> Clamp	<a href="#">Buy now</a>
25	<a href="#">69G4381800</a> Pin, lower shock mount	<a href="#">Buy now</a>
26	<a href="#">9038616MA7</a> Bush	<a href="#">Buy now</a>
27	<a href="#">9038616MA8</a> Bush	<a href="#">Buy now</a>
28	<a href="#">9038716M02</a> Collar	<a href="#">Buy now</a>
29	<a href="#">9020108M00</a> Washer, plate(6e0)	<a href="#">Buy now</a>
30	<a href="#">9708008016</a> Bolt	<a href="#">Buy now</a>
31	<a href="#">9024912M36</a> Pin	<a href="#">Buy now</a>
32	<a href="#">9038112M10</a> Bush, solid	<a href="#">Buy now</a>
33	<a href="#">9038112M11</a> Bush, solid	<a href="#">Buy now</a>

# Bracket 1

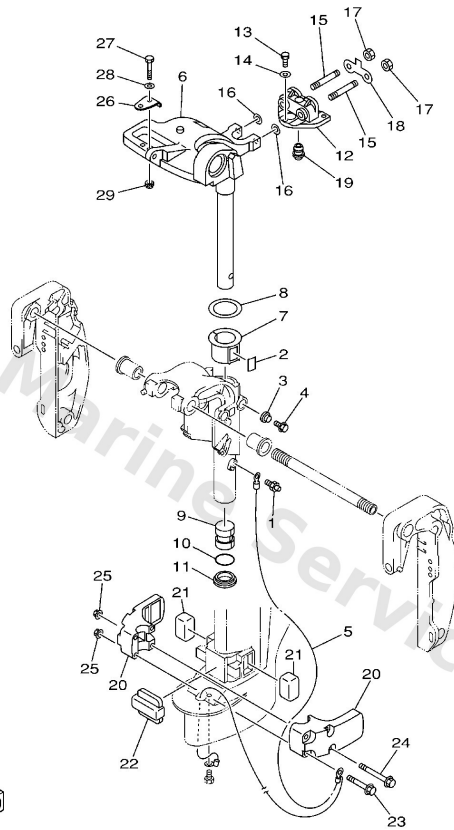


69A1300-2170

**D7**

Ref	Part	
34	<a href="#">9343010M00</a> Circlip	<a href="#">Buy now</a>
35	<a href="#">9011008M05</a> Bolt, hexagon socket head	<a href="#">Buy now</a>
36	<a href="#">9018508057</a> Nut, nylon (6j8)	<a href="#">Buy now</a>
37	<a href="#">9299008600</a> Washer, plain (663)	<a href="#">Buy now</a>
38	<a href="#">9033808M19</a> Plug S (17.4")	<a href="#">Buy now</a>
39	<a href="#">65W4525100</a> Anode	<a href="#">Buy now</a>
40	<a href="#">9010106020</a> Bolt	<a href="#">Buy now</a>
41	<a href="#">63V8212700</a> Wire, lead 2	<a href="#">Buy now</a>
42	<a href="#">9709506010</a> Bolt	<a href="#">Buy now</a>
43	<a href="#">9299506600</a> Washer, plain (646)	<a href="#">Buy now</a>
44	<a href="#">69A4315500</a> Mark 1	<a href="#">Buy now</a>

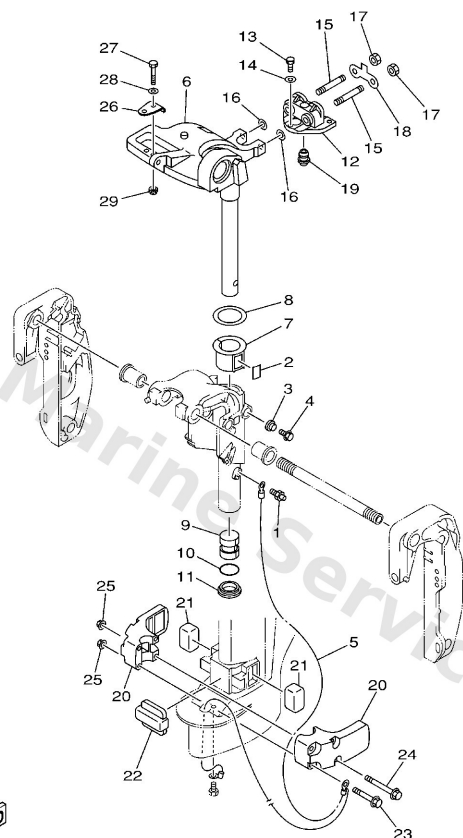
## Bracket 2



**E2**

Ref	Part	
1	<a href="#">9370006M03</a> Nipple, grease(6a1)	<a href="#">Buy now</a>
2	<a href="#">63V4252800</a> Plate, friction	<a href="#">Buy now</a>
3	<a href="#">6894337301</a> Seal, damper	<a href="#">Buy now</a>
4	<a href="#">9010506M07</a> Bolt (689)	<a href="#">Buy now</a>
5	<a href="#">66M8212700</a> Wire, Lead 2 S (17.4")	<a href="#">Buy now</a>
5	<a href="#">69A8212700</a> Wire Lead 2 L (22.4")	<a href="#">Buy now</a>
6	<a href="#">66M42511014D</a> Bracket Steering S (17.4")	<a href="#">Buy now</a>
6	<a href="#">66M42511114D</a> Bracket, steering L (22.4")	<a href="#">Buy now</a>
7	<a href="#">63V4253700</a> Bushing, pivot shaft	<a href="#">Buy now</a>
8	<a href="#">9020145M28</a> Washer, plate	<a href="#">Buy now</a>
9	<a href="#">9038630048</a> Bush	<a href="#">Buy now</a>
10	<a href="#">9321029M94</a> O-ring(6h1)	<a href="#">Buy now</a>
11	<a href="#">9038630M60</a> Bush(6j8)	<a href="#">Buy now</a>
12	<a href="#">66M44514004D</a> Mount damper, upper side	<a href="#">Buy now</a>
13	<a href="#">9707506025</a> Bolt	<a href="#">Buy now</a>

## Bracket 2

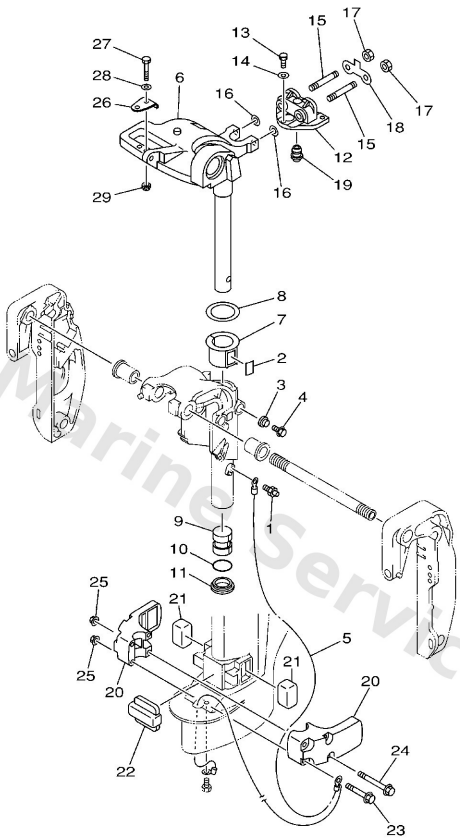


69A0100-0220

**E2**

Ref	Part	
14	<a href="#">9299506600</a> Washer, plain (646)	<a href="#">Buy now</a>
15	<a href="#">9011608M54</a> Bolt, stud(63v)	<a href="#">Buy now</a>
16	<a href="#">9020108M06</a> Washer, plate	<a href="#">Buy now</a>
17	<a href="#">9538008600</a> Nut (661)	<a href="#">Buy now</a>
18	<a href="#">66M4452600</a> Plate	<a href="#">Buy now</a>
19	<a href="#">66M4436600</a> Damper, water seal	<a href="#">Buy now</a>
20	<a href="#">66M44551004D</a> Housing, lower mount rubber 1	<a href="#">Buy now</a>
21	<a href="#">6824455530</a> Mount damper, lower side	<a href="#">Buy now</a>
22	<a href="#">66M4455700</a> Mount damper, lower front	<a href="#">Buy now</a>
23	<a href="#">9011908M45</a> Bolt, with washer	<a href="#">Buy now</a>
24	<a href="#">9011908M46</a> Bolt, with washer	<a href="#">Buy now</a>
25	<a href="#">9017908M34</a> Nut	<a href="#">Buy now</a>
26	<a href="#">63V4851101</a> Hook, steering	<a href="#">Buy now</a>
27	<a href="#">9707508035</a> Bolt(70w)	<a href="#">Buy now</a>
28	<a href="#">9299508600</a> Washer, plain (663)	<a href="#">Buy now</a>

# Bracket 2

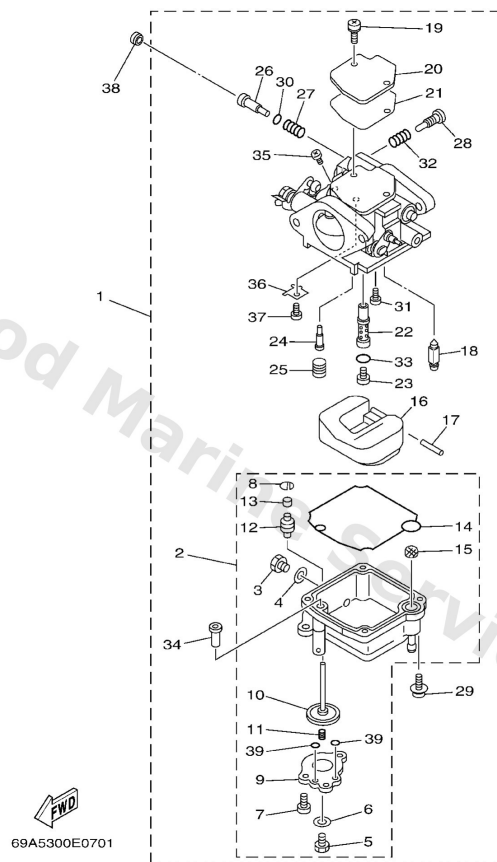


69A0100-0220

**E2**

Ref	Part	
29	<a href="#">9018508057</a> Nut, nylon (6j8)	<a href="#">Buy now</a>

# Carburetor

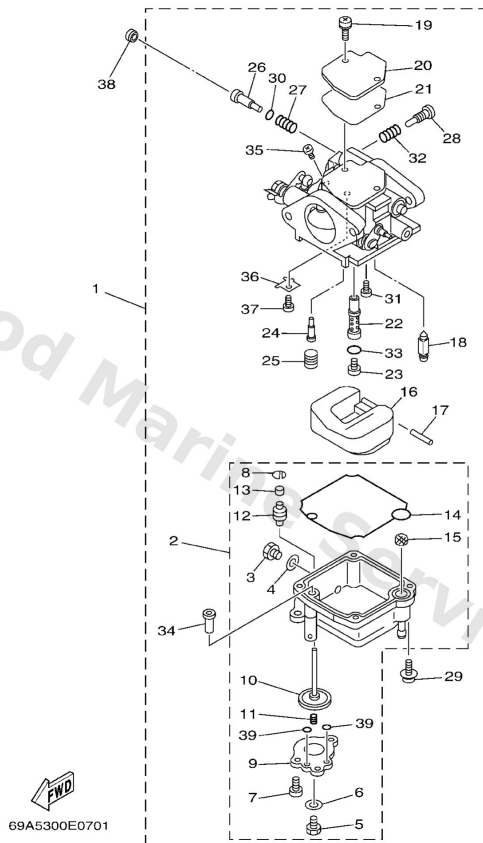


**B5**

Ref	Part	
1	<a href="#">66M1430100</a> Carburetor assembly 1 FOR STD	<a href="#">Buy now</a>
1	<a href="#">66M1430121</a> Carburetor assembly 1 FOR SAV	<a href="#">Buy now</a>
2	<a href="#">66M1438102</a> Body Float Chamber FOR STD	<a href="#">Buy now</a>
2	<a href="#">66M1438110</a> Body Float Chamber FOR SAV	<a href="#">Buy now</a>
3	<a href="#">62Y1438300</a> Screw, drain	<a href="#">Buy now</a>
4	<a href="#">66M1439800</a> Gasket	<a href="#">Buy now</a>
5	<a href="#">6771438301</a> Screw, drain	<a href="#">Buy now</a>
6	<a href="#">6L21439800</a> Gasket	<a href="#">Buy now</a>
7	<a href="#">66M1432500</a> Screw, pan head	<a href="#">Buy now</a>
8	<a href="#">66M1437700</a> Stopper	<a href="#">Buy now</a>
9	<a href="#">66M1495800</a> Cover, diaphragm	<a href="#">Buy now</a>
10	<a href="#">66M1436801</a> Diaphragm assembly 1	<a href="#">Buy now</a>
11	<a href="#">6G81427502</a> Spring	<a href="#">Buy now</a>
12	<a href="#">66M1423900</a> Seal	<a href="#">Buy now</a>
13	<a href="#">66M1422500</a> Cap	<a href="#">Buy now</a>



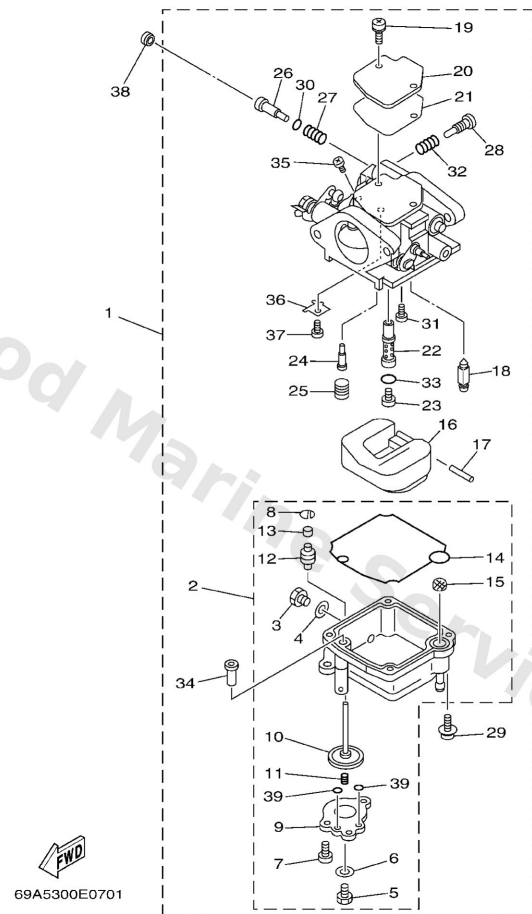
# Carburetor



**B5**

Ref	Part	
14	<a href="#">66M1438400</a> Gasket, float chamber	<a href="#">Buy now</a>
15	<a href="#">66M1482700</a> Filter	<a href="#">Buy now</a>
16	<a href="#">6L21438500</a> Float	<a href="#">Buy now</a>
17	<a href="#">6E51438601</a> Pin, float	<a href="#">Buy now</a>
18	<a href="#">6L21439200</a> Valve, needle	<a href="#">Buy now</a>
19	<a href="#">9798004110</a> Screw, pan head (e56)	<a href="#">Buy now</a>
20	<a href="#">6L21415700</a> Cover, mixing	<a href="#">Buy now</a>
21	<a href="#">62Y1439900</a> Gasket	<a href="#">Buy now</a>
22	<a href="#">66M1434100</a> Nozzle Main FOR STD	<a href="#">Buy now</a>
22	<a href="#">66M1434110</a> Nozzle Main FOR SAV	<a href="#">Buy now</a>
23	<a href="#">66M1434351</a> Jet, Main (#102) FOR SAV	<a href="#">Buy now</a>
23	<a href="#">66M1434352</a> Jet, main (#104) FOR STD	<a href="#">Buy now</a>
24	<a href="#">66M1434223</a> Jet, pilot (#45)	<a href="#">Buy now</a>
25	<a href="#">66M1435500</a> Plug	<a href="#">Buy now</a>
26	<a href="#">5H01432300</a> Pilot screw set FOR STD	<a href="#">Buy now</a>

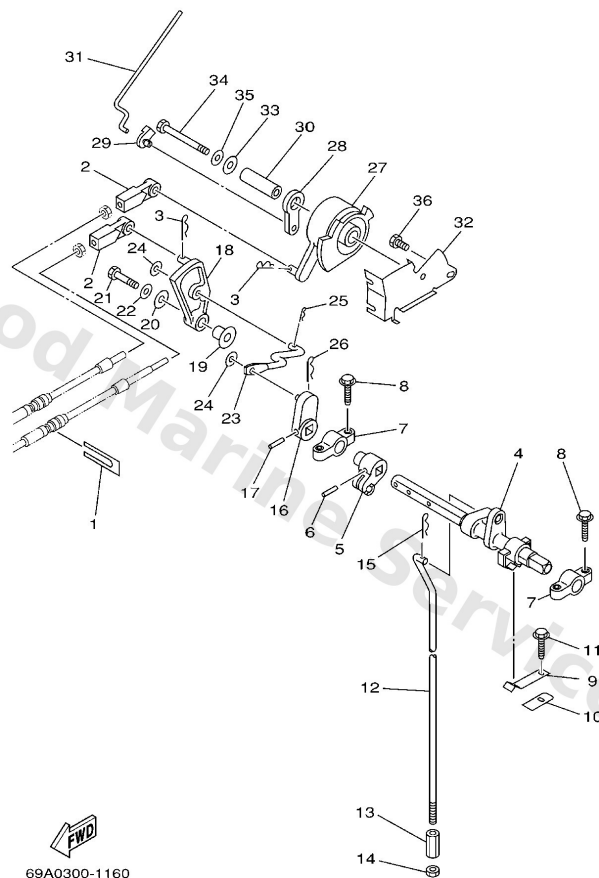
# Carburetor



**B5**

Ref	Part	
26	<a href="#">62Y1432310</a> Screw, Air Adjusting FOR SAV	<a href="#">Buy now</a>
27	<a href="#">30X1433400</a> Spring, air adjusting	<a href="#">Buy now</a>
28	<a href="#">62Y1452100</a> Screw, adjust	<a href="#">Buy now</a>
29	<a href="#">9798004112</a> Screw, pan head (686)	<a href="#">Buy now</a>
30	<a href="#">62Y1439700</a> O-ring	<a href="#">Buy now</a>
31	<a href="#">9898004006</a> Screw, bind(612)	<a href="#">Buy now</a>
32	<a href="#">6461421201</a> Spring, pilot adjusting	<a href="#">Buy now</a>
33	<a href="#">6F51439700</a> O-ring	<a href="#">Buy now</a>
34	<a href="#">66M1427200</a> Valve, check seat	<a href="#">Buy now</a>
35	<a href="#">9789004005</a> Screw, pan head(6g8)	<a href="#">Buy now</a>
36	<a href="#">66M1415700</a> Cover Mixing	<a href="#">Buy now</a>
37	<a href="#">9858003005</a> Screw, pan head(78g)	<a href="#">Buy now</a>
38	<a href="#">6G81445700</a> Plug FOR SAV	<a href="#">Buy now</a>
39	<a href="#">69M2453300</a> O-ring	<a href="#">Buy now</a>

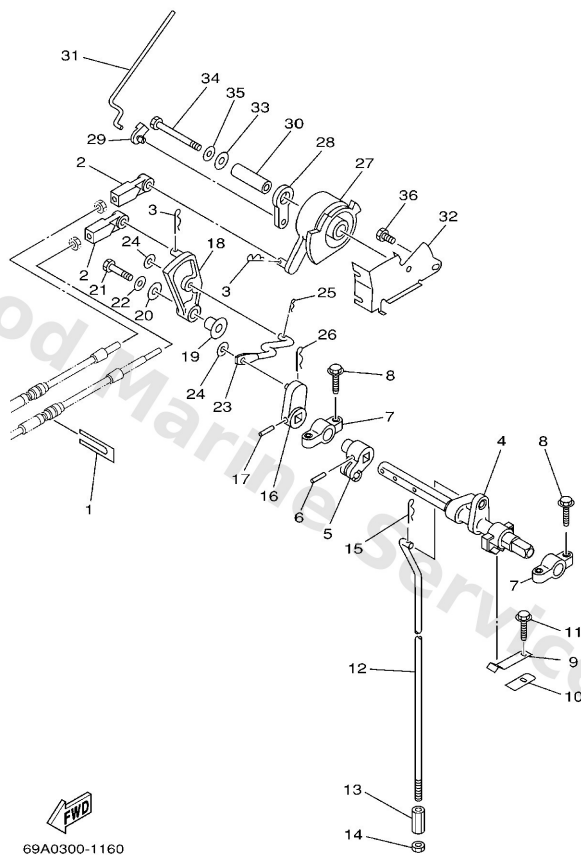
# Control



**D5**

Ref	Part	
1	<a href="#">6H34853800</a> Clamp, cable	<a href="#">Buy now</a>
2	<a href="#">6634834400</a> Cable end, remote control	<a href="#">Buy now</a>
3	<a href="#">9046818008</a> Clip 620436610000	<a href="#">Buy now</a>
4	<a href="#">65W4412100</a> Lever, shift rod	<a href="#">Buy now</a>
5	<a href="#">66M4412200</a> Bushing, shift rod lever	<a href="#">Buy now</a>
6	<a href="#">9025403M05</a> Pin, spring	<a href="#">Buy now</a>
7	<a href="#">6F54166200</a> Bracket 2	<a href="#">Buy now</a>
8	<a href="#">9010906M81</a> Bolt	<a href="#">Buy now</a>
9	<a href="#">65W4411600</a> Spring	<a href="#">Buy now</a>
10	<a href="#">66R4411400</a> Stopper	<a href="#">Buy now</a>
11	<a href="#">9010906M86</a> Bolt	<a href="#">Buy now</a>
12	<a href="#">66M4414300</a> Rod, shift S (17.4")	<a href="#">Buy now</a>
12	<a href="#">66M4414310</a> Rod, shift L (22.4")	<a href="#">Buy now</a>
13	<a href="#">9017006015</a> Connector, shift rod	<a href="#">Buy now</a>
14	<a href="#">9538006700</a> Nut	<a href="#">Buy now</a>

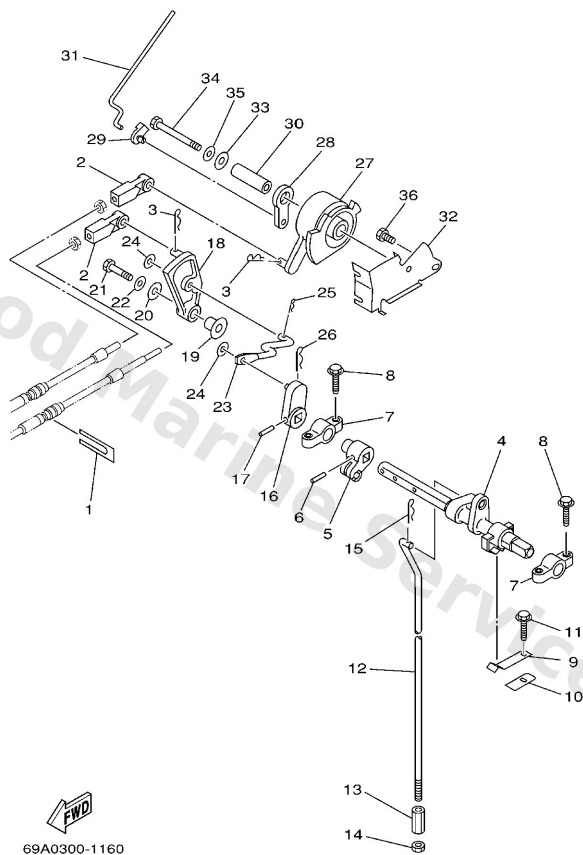
# Control



**D5**

Ref	Part	
16	<a href="#">65W4414200</a> Joint	<a href="#">Buy now</a>
18	<a href="#">65W4412500</a> Lever, shift rod	<a href="#">Buy now</a>
19	<a href="#">9038706M29</a> Collar (6a0)	<a href="#">Buy now</a>
20	<a href="#">9020106M31</a> Washer (6a0)	<a href="#">Buy now</a>
21	<a href="#">9709506025</a> Bolt	<a href="#">Buy now</a>
22	<a href="#">9299506600</a> Washer, plain (646)	<a href="#">Buy now</a>
23	<a href="#">66M4419200</a> Joint, rod 1	<a href="#">Buy now</a>
24	<a href="#">9020105M06</a> Washer, plate(61u)	<a href="#">Buy now</a>
25	<a href="#">9046810005</a> Pin, hair 6264123500	<a href="#">Buy now</a>
27	<a href="#">65W4163800</a> Pulley	<a href="#">Buy now</a>
28	<a href="#">65W4128300</a> Lever, free accel.	<a href="#">Buy now</a>
29	<a href="#">6614126202</a> Joint, choke lever	<a href="#">Buy now</a>
30	<a href="#">9038706064</a> Collar	<a href="#">Buy now</a>
31	<a href="#">66M4121100</a> Link, accel.	<a href="#">Buy now</a>
32	<a href="#">65W1449701</a> Stay, Throttle Wire	<a href="#">Buy now</a>

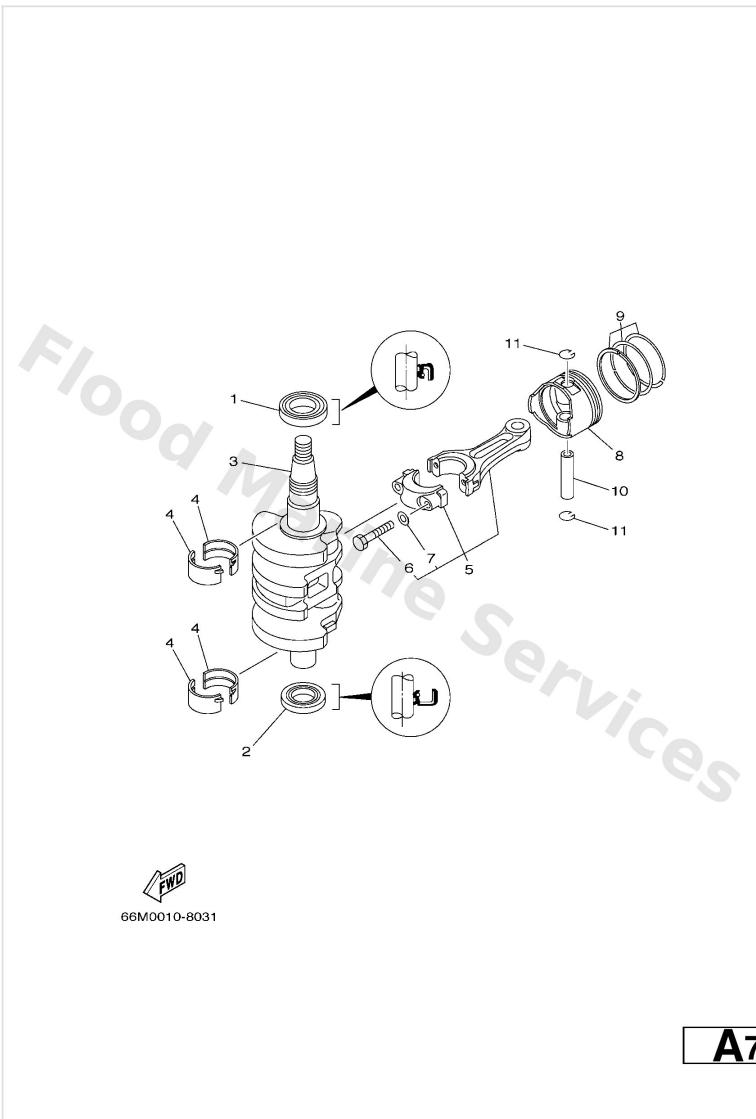
# Control



**D5**

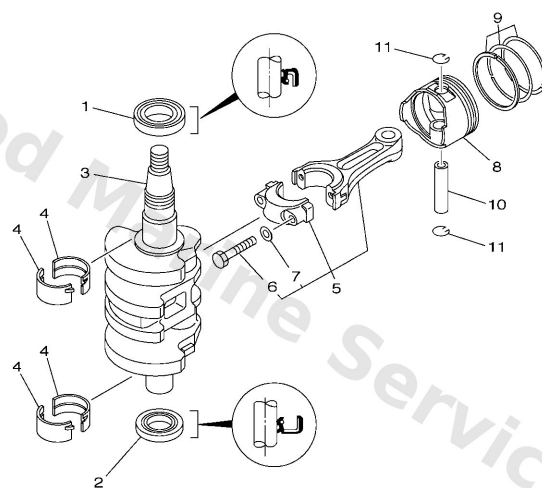
Ref	Part	
34	<a href="#">9709506055</a> Bolt, hexagon w/w deep recess	<a href="#">Buy now</a>
36	<a href="#">9709506010</a> Bolt	<a href="#">Buy now</a>

# Crankshaft & Piston



Ref	Part	
1	<a href="#">9310235M51</a> Oil seal	<a href="#">Buy now</a>
2	<a href="#">9310225M52</a> Oil seal	<a href="#">Buy now</a>
3	<a href="#">66M1141100</a> Crankshaft	<a href="#">Buy now</a>
4	<a href="#">66M1141600</a> Plane bearing, crankshaft 1 UR BROWN	<a href="#">Buy now</a>
4	<a href="#">66M1141610</a> Plane bearing, crankshaft 1 UR BLACK	<a href="#">Buy now</a>
4	<a href="#">66M1141620</a> Plane bearing, crankshaft 1 UR BLUE	<a href="#">Buy now</a>
5	<a href="#">66M1165000</a> Connecting rod kit	<a href="#">Buy now</a>
6	<a href="#">66M1165400</a> Bolt, connecting rod	<a href="#">Buy now</a>
7	<a href="#">9020107M01</a> Washer, plate	<a href="#">Buy now</a>
8	<a href="#">66M116310096</a> Piston (std)	<a href="#">Buy now</a>
8	<a href="#">66M1163500</a> Piston (0.25mm o/s) AP	<a href="#">Buy now</a>
8	<a href="#">66M1163600</a> Piston (0.50Mm O/S) AP	<a href="#">Buy now</a>
9	<a href="#">66N1160300</a> Piston ring set (std)	<a href="#">Buy now</a>
9	<a href="#">66N1160400</a> Piston ring set (0.25mm o/s) AP	<a href="#">Buy now</a>
9	<a href="#">66N1160500</a> Piston ring set (0.50mm o/s) AP	<a href="#">Buy now</a>

# Crankshaft & Piston

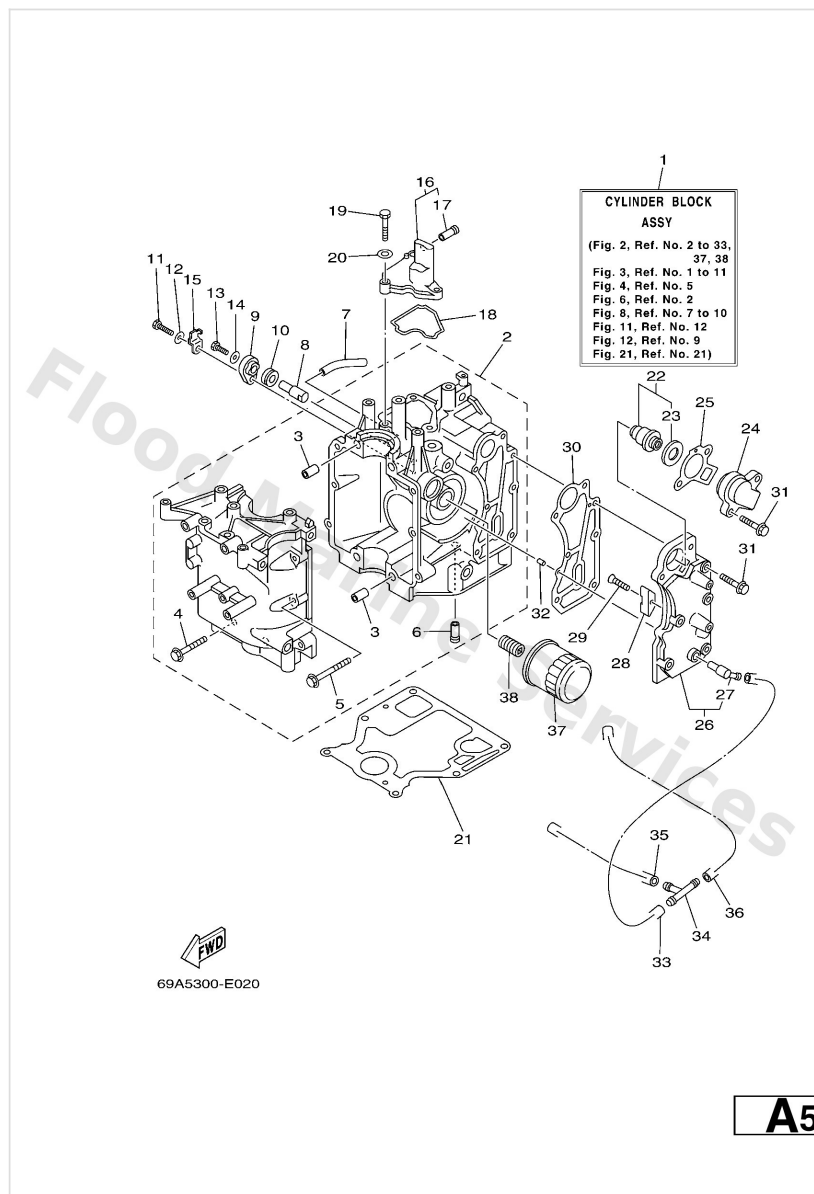


  
66M0010-8031

**A7**

Ref	Part	
10	<a href="#">6341163300</a> Pin, piston	<a href="#">Buy now</a>
11	<a href="#">9345015023</a> Circlip 131116340000	<a href="#">Buy now</a>

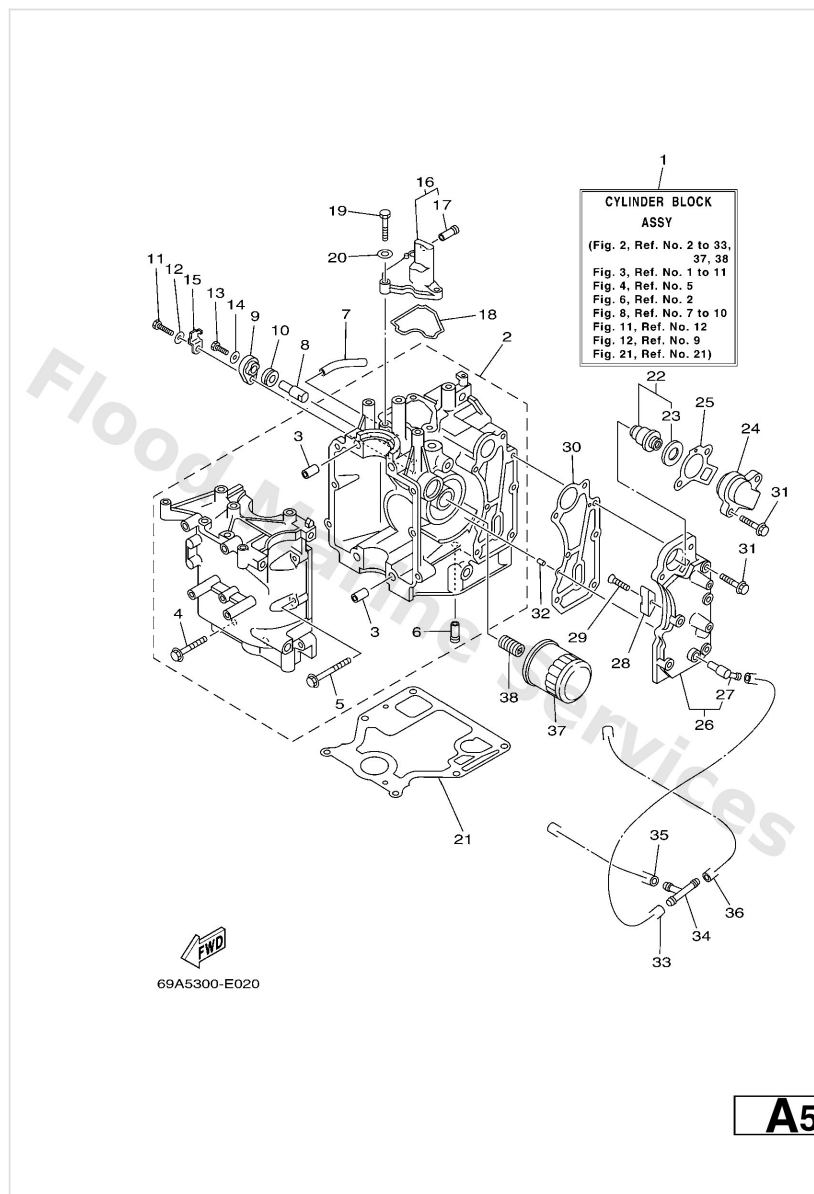
# Cylinder & Crankcase 1



Ref	Part	
1	<a href="#">66MW009B121S</a> Cylinder block assembly (with reli <b>FLUSHING KIT</b>	<a href="#">Buy now</a>
2	<a href="#">66M15100021S</a> Crankcase assembly	<a href="#">Buy now</a>
3	<a href="#">9951010114</a> Pin, dowel(3vd)	<a href="#">Buy now</a>
4	<a href="#">9011908M66</a> Bolt, with washer	<a href="#">Buy now</a>
5	<a href="#">9011906M14</a> Bolt, with washer (677)	<a href="#">Buy now</a>
6	<a href="#">6E52437700</a> Pipe, joint	<a href="#">Buy now</a>
7	<a href="#">9044510M46</a> Hose (I200)	<a href="#">Buy now</a>
8	<a href="#">66M1132500</a> Anode	<a href="#">Buy now</a>
9	<a href="#">66M113270094</a> Cover, anode	<a href="#">Buy now</a>
10	<a href="#">66M1132800</a> Grommet, anode	<a href="#">Buy now</a>
11	<a href="#">9709506020</a> Bolt(7u8)	<a href="#">Buy now</a>
12	<a href="#">9299506600</a> Washer, plain (646)	<a href="#">Buy now</a>
13	<a href="#">9709505012</a> Bolt, hexagon	<a href="#">Buy now</a>
14	<a href="#">9299505600</a> Washer, plain (646)	<a href="#">Buy now</a>
15	<a href="#">66M1253500</a> Plate	<a href="#">Buy now</a>

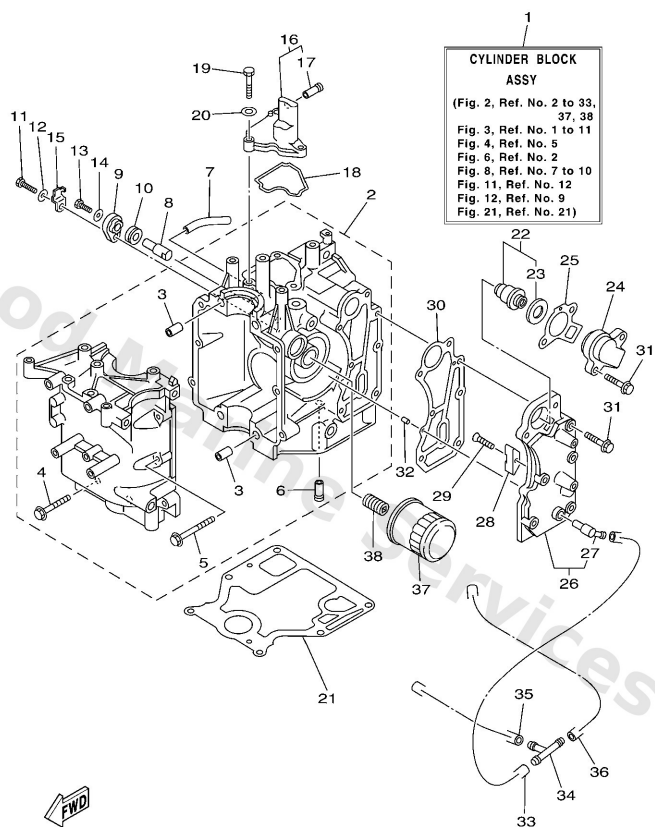


# Cylinder & Crankcase 1



Ref	Part	
16	<a href="#">66M11168001S</a> Cover Breather	<a href="#">Buy now</a>
18	<a href="#">66M1135700</a> Seal, cylinder 3	<a href="#">Buy now</a>
21	<a href="#">66M1135110</a> Gasket, cylinder	<a href="#">Buy now</a>
22	<a href="#">66M1241101</a> Thermostat	<a href="#">Buy now</a>
23	<a href="#">6881241200</a> Seal, thermostat	<a href="#">Buy now</a>
24	<a href="#">6H312413001S</a> Cover, thermostat	<a href="#">Buy now</a>
25	<a href="#">62Y1241400</a> Gasket, cover	<a href="#">Buy now</a>
26	<a href="#">66M41113301S</a> Outer Cover, Exhaust <b>FLUSHING KIT</b>	<a href="#">Buy now</a>
27	<a href="#">6761137200</a> Nipple, hose	<a href="#">Buy now</a>
28	<a href="#">6E51132500</a> Anode	<a href="#">Buy now</a>
29	<a href="#">9878004015</a> Screw, flat head(ga5)	<a href="#">Buy now</a>
30	<a href="#">66M4111401</a> Gasket, exhaust outer cover	<a href="#">Buy now</a>
31	<a href="#">9011906MA4</a> Bolt, with washer	<a href="#">Buy now</a>
32	<a href="#">9360412M07</a> Pin, dowel (688)	<a href="#">Buy now</a>
33	<a href="#">9044509061</a> Hose (L65)	<a href="#">Buy now</a>

# Cylinder & Crankcase 1

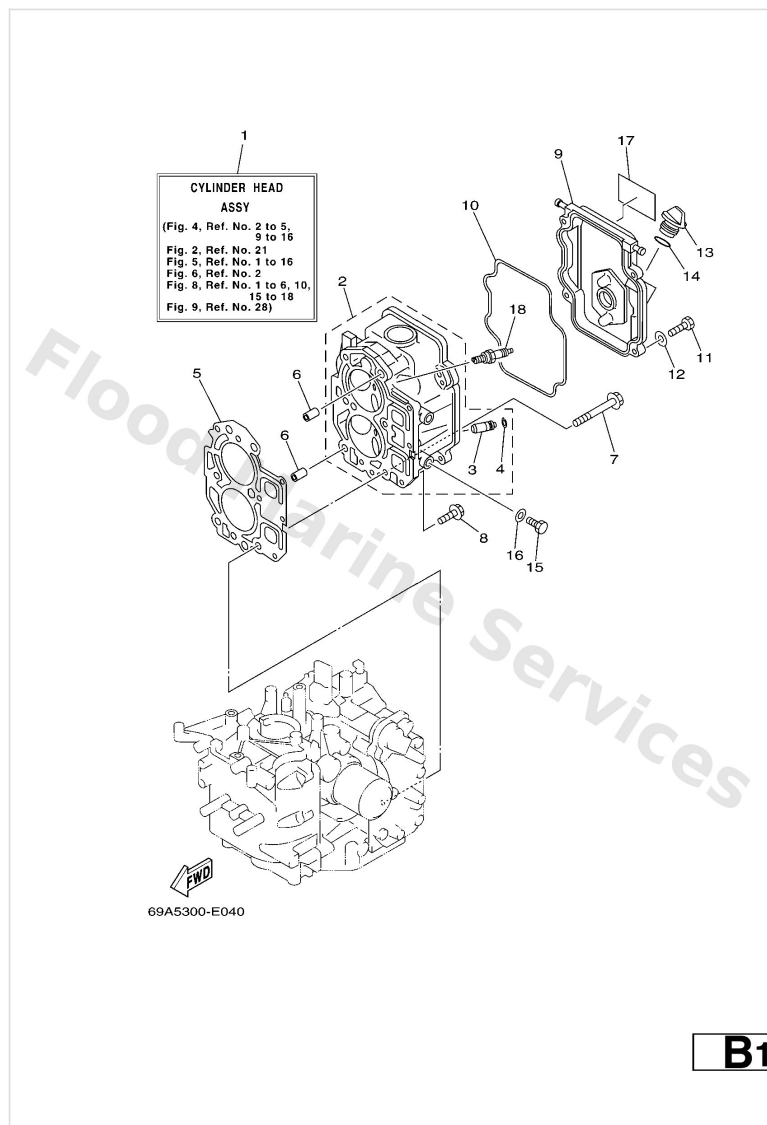


69A5300-E020

**A5**

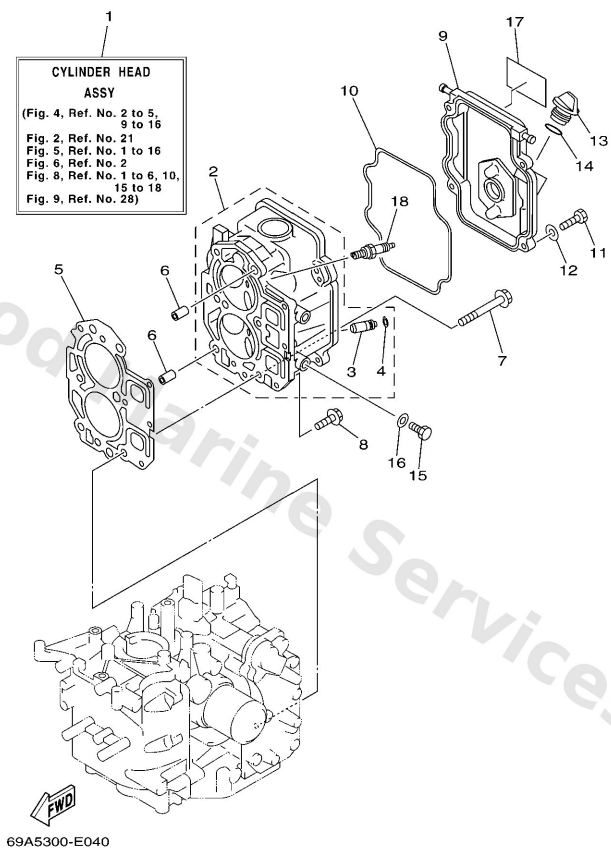
Ref	Part	
34	<a href="#">6882437800</a> Pipe, joint	<a href="#">Buy now</a>
35	<a href="#">9044509086</a> Hose (I1500)	<a href="#">Buy now</a>
36	<a href="#">9044509104</a> Hose (I1500)	<a href="#">Buy now</a>
37	<a href="#">5GH1344000</a> Element assembly, oil cleaner	<a href="#">Buy now</a>
38	<a href="#">9040120M00</a> Bolt, union(62y)	<a href="#">Buy now</a>

## Cylinder & Crankcase 2



Ref	Part	
1	<a href="#">66MW009A021S</a> Cylinder Head assembly FOR STD	<a href="#">Buy now</a>
1	<a href="#">66MW009A121S</a> Cylinder Head assembly FOR SAV	<a href="#">Buy now</a>
2	<a href="#">66M11111011S</a> Head, cylinder 1 FOR STD	<a href="#">Buy now</a>
2	<a href="#">66M11111111S</a> Head Cylinder 1 FOR SAV	<a href="#">Buy now</a>
3	<a href="#">66M1113329</a> Guide Valve 1	<a href="#">Buy now</a>
4	<a href="#">9345009M01</a> Circlip (6g8)	<a href="#">Buy now</a>
5	<a href="#">66M1118110</a> Gasket, cylinder head 1	<a href="#">Buy now</a>
6	<a href="#">9951010114</a> Pin, dowel(3vd)	<a href="#">Buy now</a>
7	<a href="#">9010508M78</a> Bolt, washer based	<a href="#">Buy now</a>
8	<a href="#">9011906MA3</a> Bolt, with washer	<a href="#">Buy now</a>
9	<a href="#">66M11191001S</a> Cover Cylinder Head 1	<a href="#">Buy now</a>
10	<a href="#">66M1135600</a> Seal, cylinder 2	<a href="#">Buy now</a>
11	<a href="#">9709506020</a> Bolt(7u8)	<a href="#">Buy now</a>
12	<a href="#">9299506600</a> Washer, plain (646)	<a href="#">Buy now</a>
13	<a href="#">6G81536300</a> Plug, oil	<a href="#">Buy now</a>

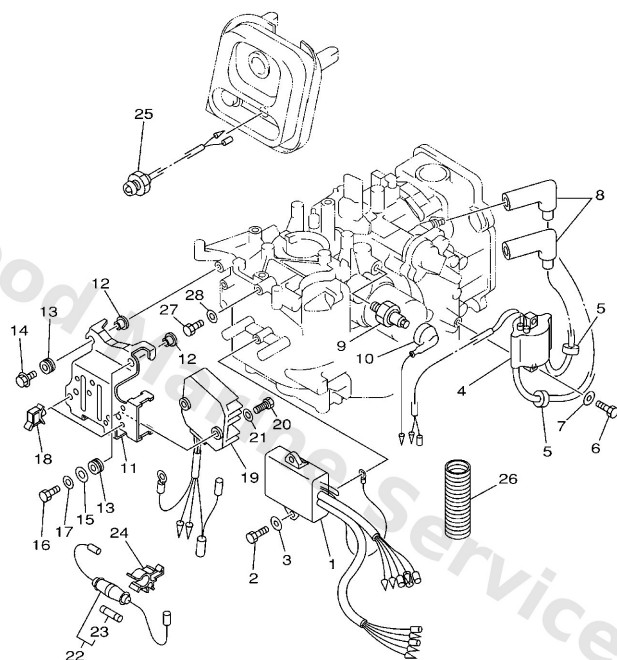
## Cylinder & Crankcase 2



**B1**

Ref	Part	
14	<a href="#">9321024M79</a> O-ring	<a href="#">Buy now</a>
15	<a href="#">9709508014</a> Bolt, hexagon deep recess FOR SAV	<a href="#">Buy now</a>
16	<a href="#">9043008143</a> Gasket (256-11198-00) FOR SAV	<a href="#">Buy now</a>
17	<a href="#">66M1213860</a> Mark Caution	<a href="#">Buy now</a>
18	<a href="#">9470100375</a> Plug, spark (dpr6ea-9)(62y)	<a href="#">Buy now</a>

# Electrical 1

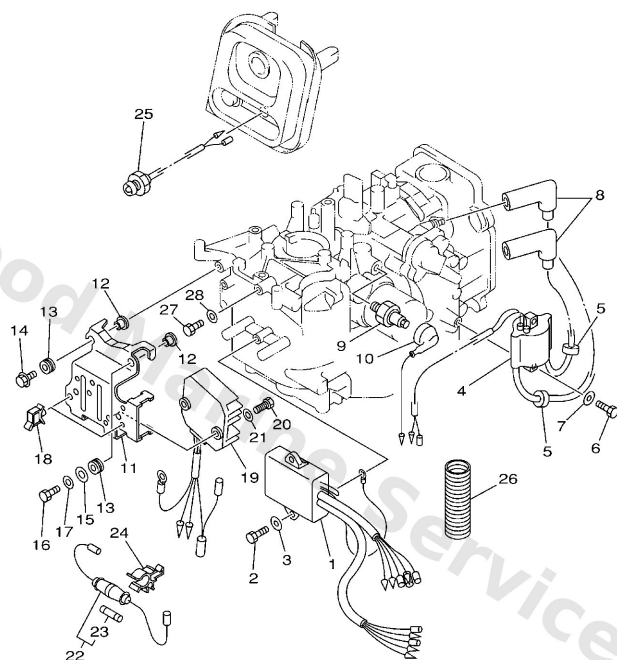


69B0010-1120

**C5**

Ref	Part	
1	<a href="#">66M8554001</a> C.d.i. Unit assembly	<a href="#">Buy now</a>
1	<a href="#">66M8554010</a> C.d.i. unit assembly	<a href="#">Buy now</a>
2	<a href="#">9709506020</a> Bolt(7u8)	<a href="#">Buy now</a>
3	<a href="#">9299506600</a> Washer, plain (646)	<a href="#">Buy now</a>
4	<a href="#">66M8557000</a> Ignition coil assembly	<a href="#">Buy now</a>
5	<a href="#">9048025161</a> Grommet(656)	<a href="#">Buy now</a>
8	<a href="#">6G88237030</a> Plug cap assembly	<a href="#">Buy now</a>
9	<a href="#">62Y8250410</a> Oil pressure switch assembly	<a href="#">Buy now</a>
10	<a href="#">66M8212710</a> Wire, lead 2	<a href="#">Buy now</a>
11	<a href="#">69A8554210</a> Bracket	<a href="#">Buy now</a>
12	<a href="#">9038706M05</a> Collar(6h4)	<a href="#">Buy now</a>
13	<a href="#">9048013M24</a> Grommet (6e9)	<a href="#">Buy now</a>
14	<a href="#">9589506020</a> Bolt, flange(jk3)	<a href="#">Buy now</a>
15	<a href="#">9020106M05</a> Washer, plate(6e3)	<a href="#">Buy now</a>
16	<a href="#">9709506025</a> Bolt	<a href="#">Buy now</a>

# Electrical 1

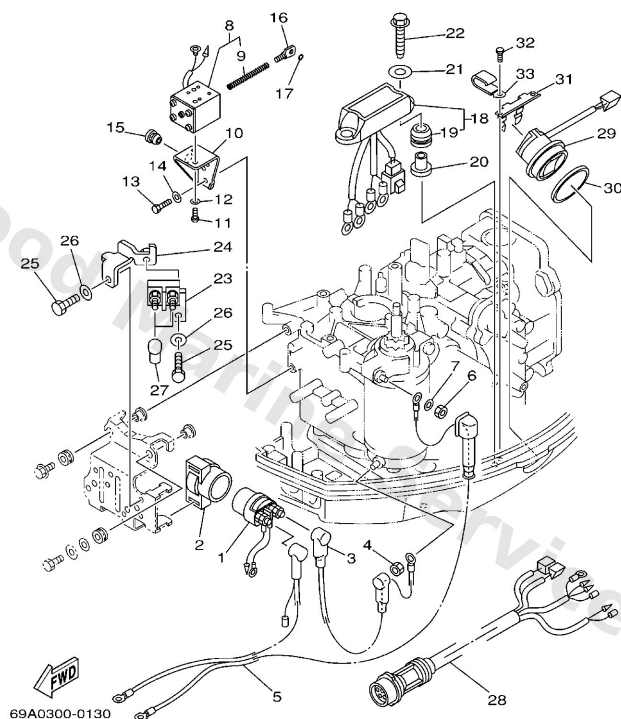


  
69B0010-1120

**C5**

Ref	Part	
18	<a href="#">9046409M13</a> Clamp (6h1)	<a href="#">Buy now</a>
19	<a href="#">6G881960A1</a> Rectifier & regulator assembly	<a href="#">Buy now</a>
20	<a href="#">9709506016</a> Bolt, hexagon deep recess	<a href="#">Buy now</a>
22	<a href="#">6G88215000</a> Fuse holder assembly	<a href="#">Buy now</a>
23	<a href="#">6638215100</a> Fuse	<a href="#">Buy now</a>
24	<a href="#">6G58215200</a> Holder, fuse	<a href="#">Buy now</a>
25	<a href="#">65W8541001</a> Emergency signal light assembly	<a href="#">Buy now</a>
26	<a href="#">6H18355700</a> Tube	<a href="#">Buy now</a>

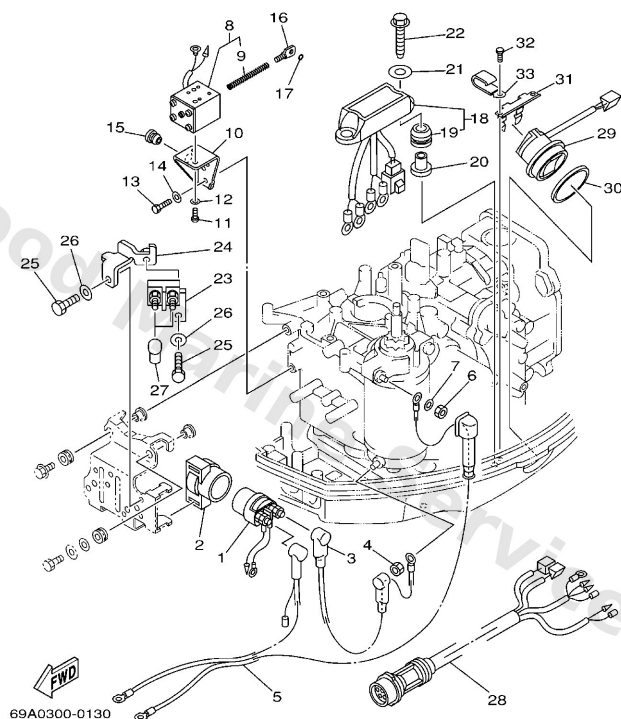
## Electrical 2



**C7**

Ref	Part	
1	<a href="#">6G18194110</a> Starter relay	<a href="#">Buy now</a>
2	<a href="#">6G18195200</a> Holder, relay	<a href="#">Buy now</a>
3	<a href="#">66M8211700</a> Wire, lead	<a href="#">Buy now</a>
4	<a href="#">65W8182B00</a> Nut, special	<a href="#">Buy now</a>
5	<a href="#">66M8210500</a> Battery cable	<a href="#">Buy now</a>
6	<a href="#">9538008700</a> Nut(661)	<a href="#">Buy now</a>
7	<a href="#">9299008600</a> Washer, plain (663)	<a href="#">Buy now</a>
8	<a href="#">66M8611100</a> Coil, solenoid	<a href="#">Buy now</a>
9	<a href="#">66M8611600</a> Wire, Pull	<a href="#">Buy now</a>
10	<a href="#">66M8611200</a> Stay Solenoid	<a href="#">Buy now</a>
11	<a href="#">9788005008</a> Screw, with washer	<a href="#">Buy now</a>
12	<a href="#">9299005600</a> Washer, plain (646)	<a href="#">Buy now</a>
13	<a href="#">9709506016</a> Bolt, hexagon deep recess	<a href="#">Buy now</a>
14	<a href="#">9299506600</a> Washer, plain (646)	<a href="#">Buy now</a>
15	<a href="#">9048010M13</a> Grommet (6e0)	<a href="#">Buy now</a>

## Electrical 2

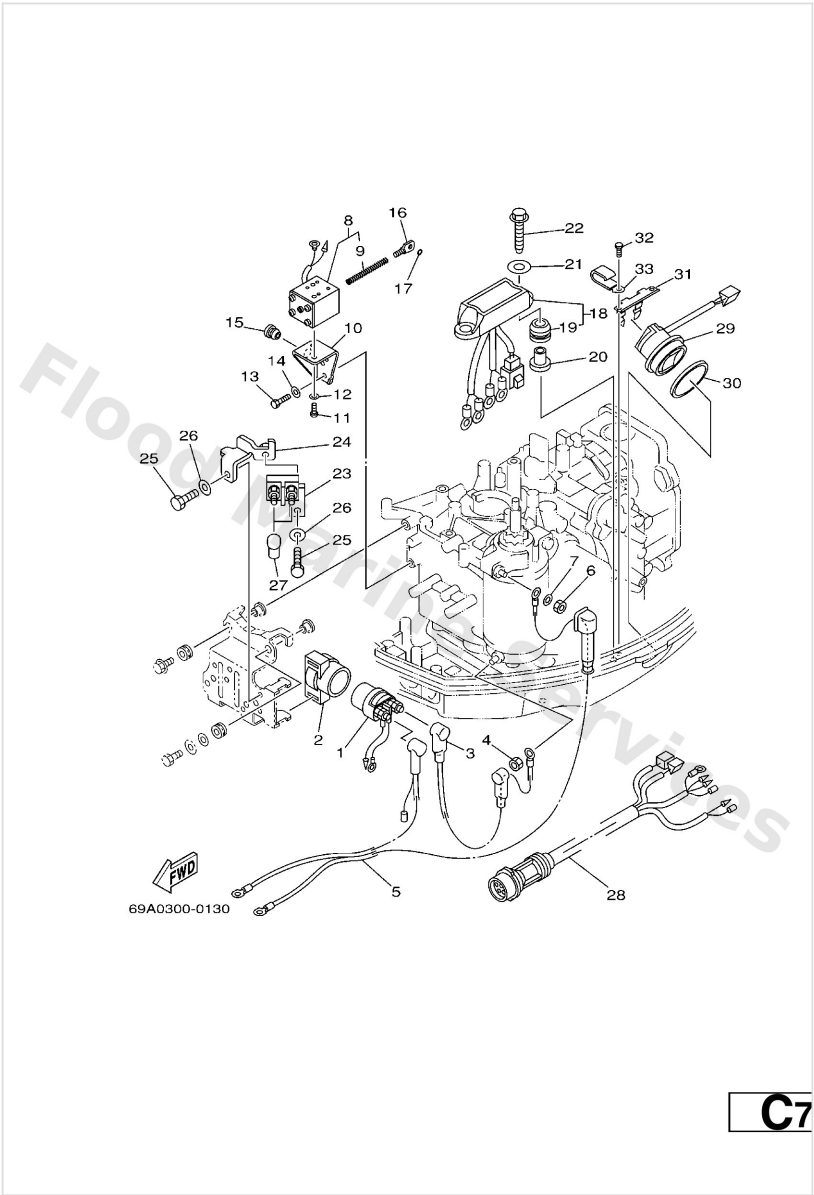


**C7**

Ref	Part	
16	<a href="#">66M8611700</a> Hook, wire pull	<a href="#">Buy now</a>
17	<a href="#">9321003261</a> O-ring (663)	<a href="#">Buy now</a>
18	<a href="#">69A8195000</a> Relay assembly	<a href="#">Buy now</a>
19	<a href="#">9048009M12</a> Grommet (6a0)	<a href="#">Buy now</a>
20	<a href="#">9038706M03</a> Collar (676)	<a href="#">Buy now</a>
21	<a href="#">9020106416</a> Washer, plate(663)	<a href="#">Buy now</a>
22	<a href="#">9010906MA2</a> Bolt	<a href="#">Buy now</a>
23	<a href="#">6H58192000</a> Terminal assembly	<a href="#">Buy now</a>
24	<a href="#">69A8192900</a> Bracket Terminal	<a href="#">Buy now</a>
25	<a href="#">9709506012</a> Bolt(gh1)	<a href="#">Buy now</a>
27	<a href="#">6G58211900</a> Cover, lead wire	<a href="#">Buy now</a>
28	<a href="#">69A8259000</a> Wire Harness assembly	<a href="#">Buy now</a>
29	<a href="#">63D8256310</a> Trim & tilt switch assembly	<a href="#">Buy now</a>
30	<a href="#">6E58258700</a> Gasket	<a href="#">Buy now</a>
31	<a href="#">69A8361400</a> Bracket	<a href="#">Buy now</a>

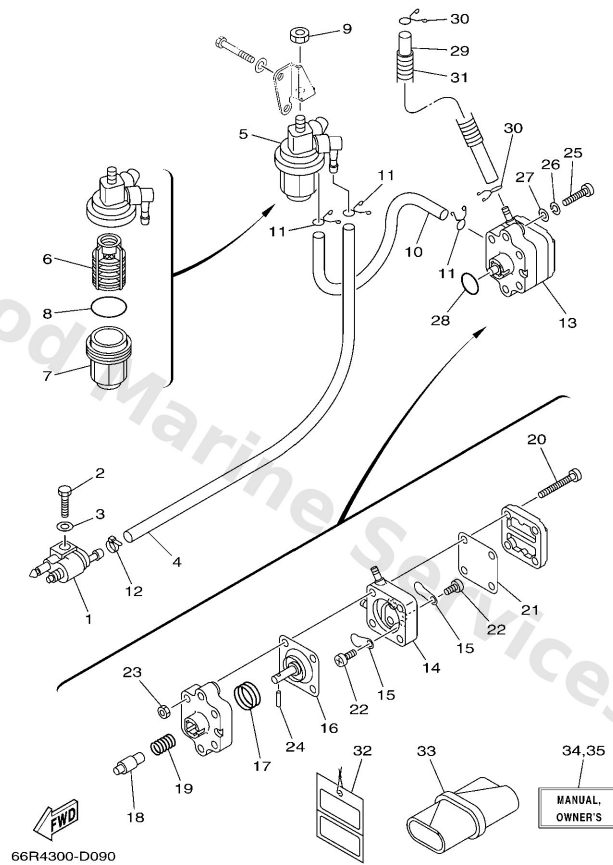


# Electrical 2



Ref	Part	
32	<a href="#">9010906M86</a> Bolt	<a href="#">Buy now</a>
33	<a href="#">9046506M88</a> Clamp	<a href="#">Buy now</a>

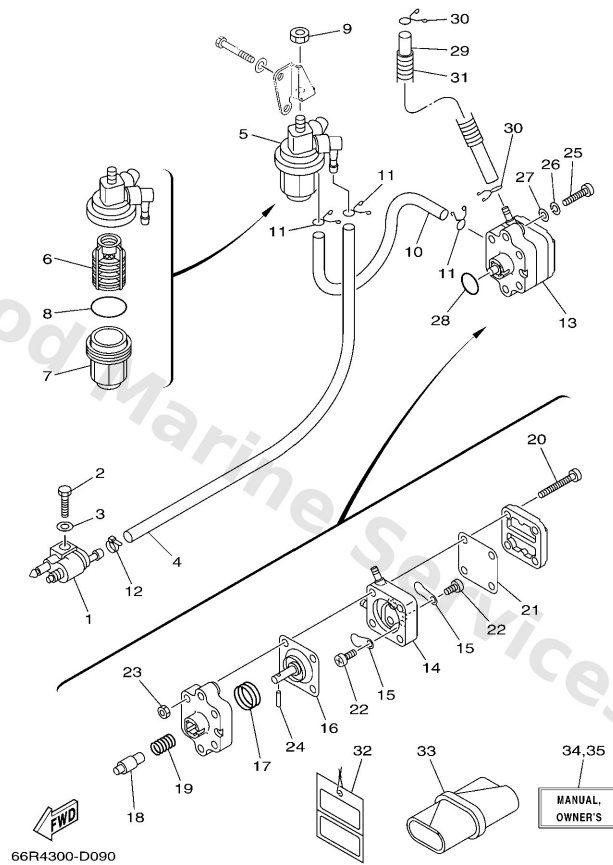
# Fuel



**C1**

Ref	Part	
1	<a href="#">6G12430402</a> Fuel pipe joint comp. 1	<a href="#">Buy now</a>
2	<a href="#">9709506020</a> Bolt(7u8)	<a href="#">Buy now</a>
3	<a href="#">9299506600</a> Washer, plain (646)	<a href="#">Buy now</a>
4	<a href="#">9044510M19</a> Hose (l590)	<a href="#">Buy now</a>
5	<a href="#">61N2456000</a> Filter assembly	<a href="#">Buy now</a>
6	<a href="#">61N2456300</a> Element, filter	<a href="#">Buy now</a>
7	<a href="#">61N2452100</a> Cup, filter	<a href="#">Buy now</a>
8	<a href="#">9321032738</a> O-ring(1wg)	<a href="#">Buy now</a>
9	<a href="#">9538008600</a> Nut (661)	<a href="#">Buy now</a>
10	<a href="#">9044510M15</a> Hose (l400)	<a href="#">Buy now</a>
11	<a href="#">9046709M17</a> Clip(6k8)	<a href="#">Buy now</a>
12	<a href="#">9046511M10</a> Clamp	<a href="#">Buy now</a>
13	<a href="#">66M2441010</a> Fuel pump assembly	<a href="#">Buy now</a>
14	<a href="#">66M2441301</a> Body 2	<a href="#">Buy now</a>
15	<a href="#">6A02442101</a> Valve, check	<a href="#">Buy now</a>

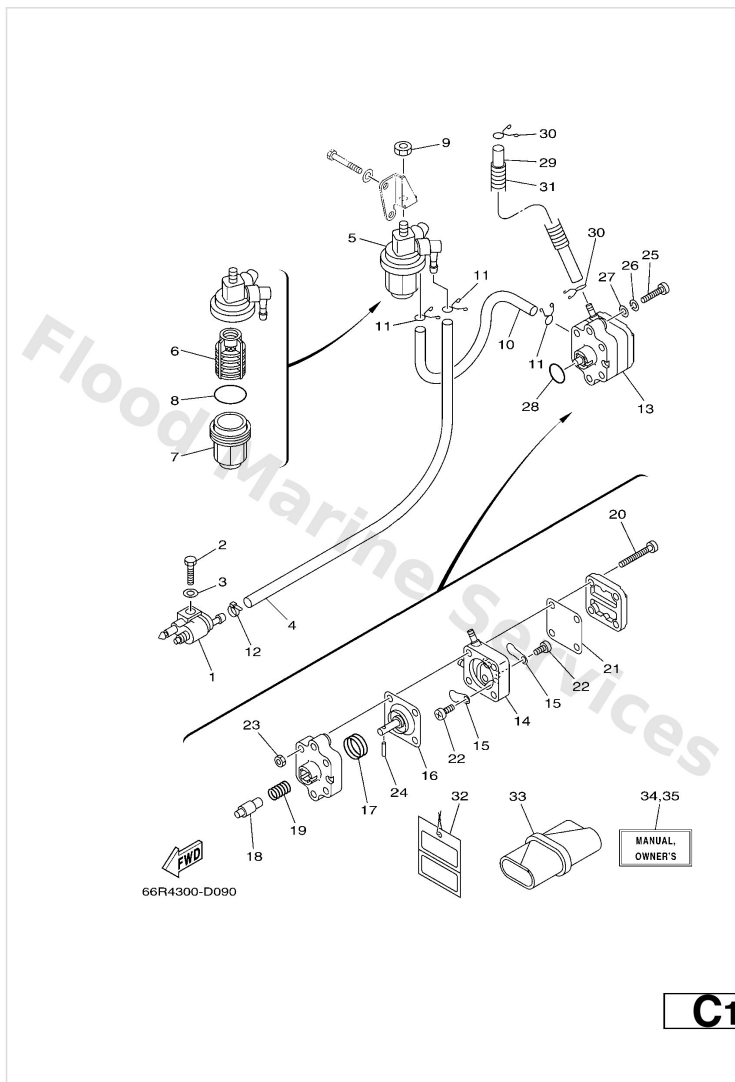
# Fuel



**C1**

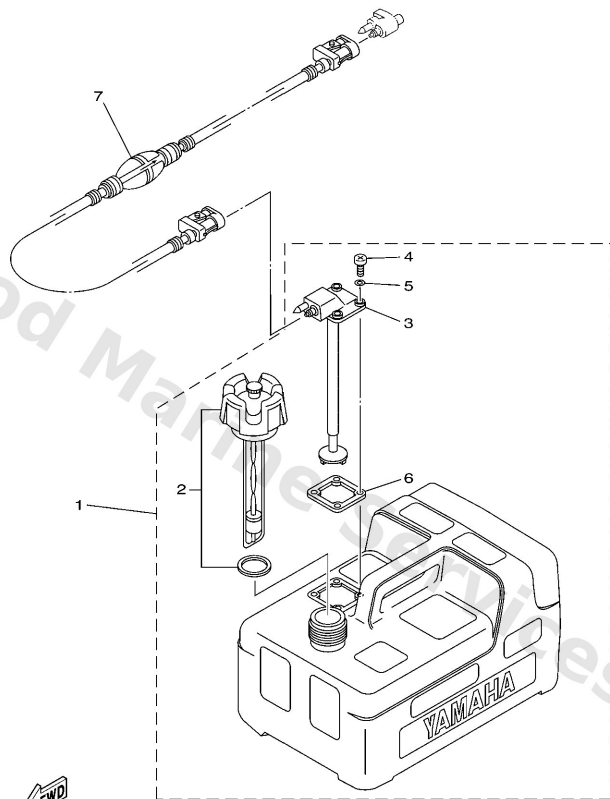
Ref	Part	
16	<a href="#">66M2441110</a> Diaphragm	<a href="#">Buy now</a>
17	<a href="#">66M2442300</a> Spring, diaphragm	<a href="#">Buy now</a>
18	<a href="#">66M1313110</a> Plunger	<a href="#">Buy now</a>
19	<a href="#">66M2445400</a> Spring	<a href="#">Buy now</a>
20	<a href="#">66M2444400</a> Screw	<a href="#">Buy now</a>
21	<a href="#">66M2447100</a> Diaphragm	<a href="#">Buy now</a>
22	<a href="#">6E71432500</a> Screw, pan head	<a href="#">Buy now</a>
23	<a href="#">9538004600</a> Nut, hex	<a href="#">Buy now</a>
24	<a href="#">66M2437400</a> Pin	<a href="#">Buy now</a>
25	<a href="#">9788006030</a> Screw, pan head(6e0)	<a href="#">Buy now</a>
26	<a href="#">9299006100</a> Washer(6a1)	<a href="#">Buy now</a>
27	<a href="#">9299006600</a> Washer, plain (646)	<a href="#">Buy now</a>
28	<a href="#">9321020M65</a> O-ring	<a href="#">Buy now</a>
29	<a href="#">9044510M93</a> Hose (I400)	<a href="#">Buy now</a>
31	<a href="#">9044614M51</a> Hose(6tc)	<a href="#">Buy now</a>

# Fuel



Ref	Part	
32	<a href="#">61H2819R31</a> Tag Warning	<a href="#">Buy now</a>
33	<a href="#">62Y2810000</a> Tool kit	<a href="#">Buy now</a>
34	<a href="#">66M281997AD0</a> Om f15a/f9.9c/ft9.9d/f13.5a'06 UR (NL)	<a href="#">Buy now</a>
34	<a href="#">66M281997AE0</a> Om f15a/f9.9c/ft9.9d/f13.5a'06 UR (E)	<a href="#">Buy now</a>
34	<a href="#">66M281997AF0</a> Om f15a/f9.9c/ft9.9d/f13.5a'06 UR (F)	<a href="#">Buy now</a>
34	<a href="#">66M281997AG0</a> Om f15a/f9.9c/ft9.9d/f13.5a'06 UR (D)	<a href="#">Buy now</a>
34	<a href="#">66M281997AH0</a> Om f15a/f9.9c/ft9.9d/f13.5a'06 UR (I)	<a href="#">Buy now</a>
34	<a href="#">66M281997AS0</a> Om f15a/f9.9c/ft9.9d/f13.5a'06 UR (ES)	<a href="#">Buy now</a>
35	<a href="#">66M281998BK0</a> Om f15a/f9.9c/ft9.9d/f13.5a'06 UR (DK)	<a href="#">Buy now</a>
35	<a href="#">66M281998BL0</a> Om f15a/f9.9c/ft9.9d/f13.5a'06 UR (SF)	<a href="#">Buy now</a>
35	<a href="#">66M281998BM0</a> Om f15a/f9.9c/ft9.9d/f13.5a'06 UR (S)	<a href="#">Buy now</a>
35	<a href="#">66M281998BN0</a> Om f15a/f9.9c/ft9.9d/f13.5a'06 UR (N)	<a href="#">Buy now</a>
35	<a href="#">66M281998BP0</a> Om f15a/f9.9c/ft9.9d/f13.5a'06 UR (P)	<a href="#">Buy now</a>
35	<a href="#">66M281998BR0</a> Om f15a/f9.9c/ft9.9d/f13.5a'06 UR (GR)	<a href="#">Buy now</a>

# Fuel Tank

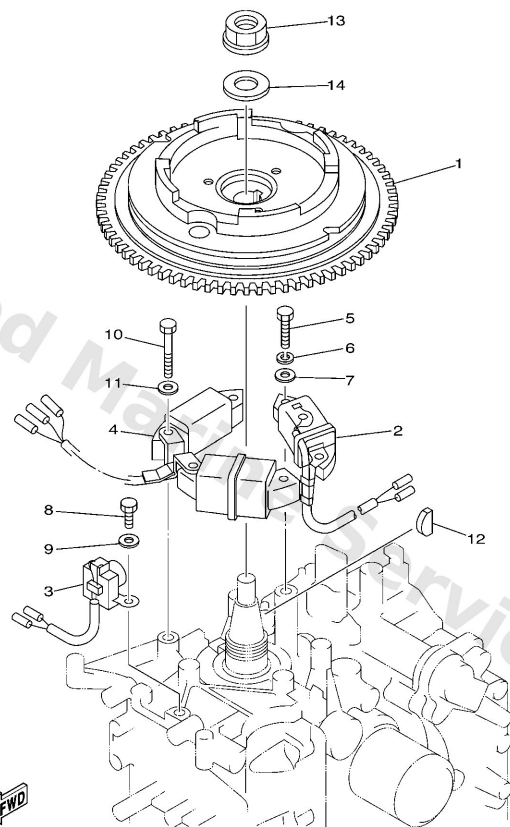


66M4100-D270

**F7**

Ref	Part	
1	<a href="#">6YL2420104</a> - AP	<a href="#">Buy now</a>
2	<a href="#">6YL2461001</a> Cap assembly	<a href="#">Buy now</a>
3	<a href="#">6YL2426001</a> Fuel meter assembly	<a href="#">Buy now</a>
4	<a href="#">9015705M16</a> Screw, pan head	<a href="#">Buy now</a>
5	<a href="#">6YL2432900</a> Seal	<a href="#">Buy now</a>
6	<a href="#">6YL2426801</a> Gasket, fuel meter	<a href="#">Buy now</a>
7	<a href="#">6YL2430654</a> Fuel pipe comp. 1 AP	<a href="#">Buy now</a>

# Generator

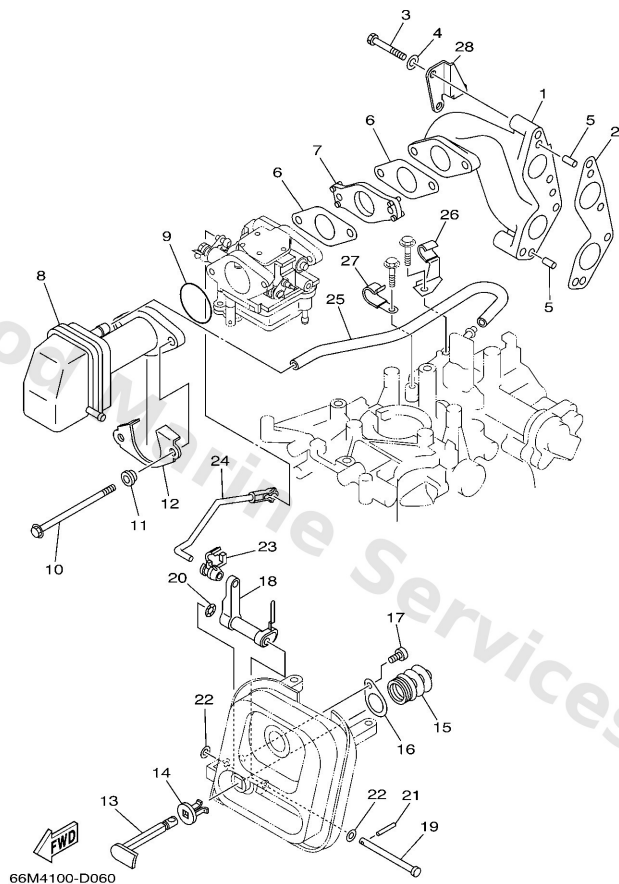


69B0010-0110

**C4**

Ref	Part	
1	<a href="#">66M8555010</a> Rotor assembly	<a href="#">Buy now</a>
2	<a href="#">66M8552000</a> Coil, charge	<a href="#">Buy now</a>
3	<a href="#">66M8558000</a> Coil, pulser	<a href="#">Buy now</a>
4	<a href="#">66M8553310</a> Coil, Lighting 10A	<a href="#">Buy now</a>
5	<a href="#">9709506025</a> Bolt	<a href="#">Buy now</a>
6	<a href="#">9299506100</a> Washer(6a1)	<a href="#">Buy now</a>
7	<a href="#">9299506600</a> Washer, plain (646)	<a href="#">Buy now</a>
8	<a href="#">9709506016</a> Bolt, hexagon deep recess	<a href="#">Buy now</a>
10	<a href="#">9709506040</a> Bolt (682)	<a href="#">Buy now</a>
12	<a href="#">9028005013</a> Key, woodruff	<a href="#">Buy now</a>
13	<a href="#">9017916M05</a> Nut (689)	<a href="#">Buy now</a>
14	<a href="#">9020116M44</a> Washer (689)	<a href="#">Buy now</a>

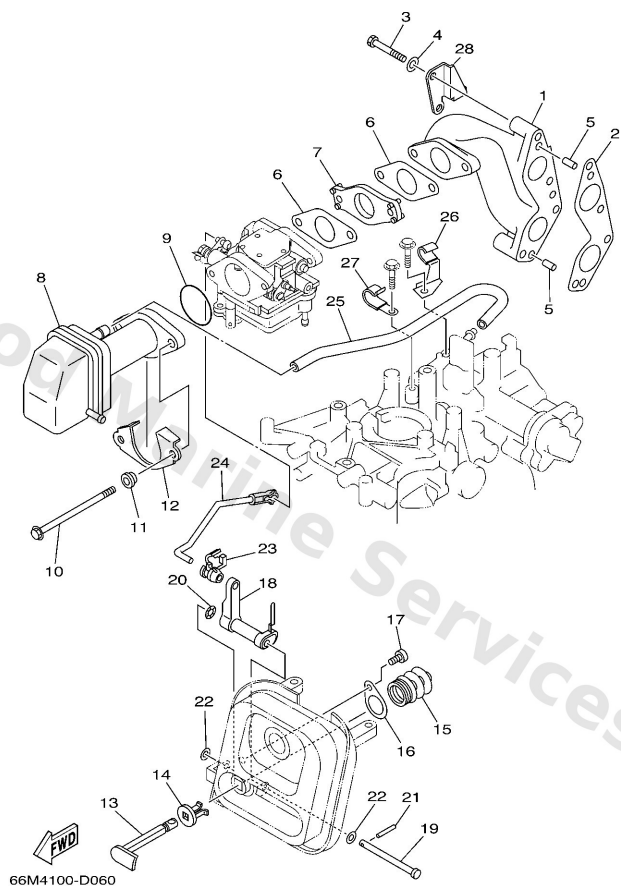
# Intake



**B3**

Ref	Part	
1	<a href="#">66M136411094</a> Manifold 1	<a href="#">Buy now</a>
2	<a href="#">66M1364500</a> Gasket, manifold 1	<a href="#">Buy now</a>
3	<a href="#">9709506040</a> Bolt (682)	<a href="#">Buy now</a>
4	<a href="#">9299506600</a> Washer, plain (646)	<a href="#">Buy now</a>
5	<a href="#">9360612019</a> Pin, dowel (614)	<a href="#">Buy now</a>
6	<a href="#">66M1364600</a> Gasket, manifold 2	<a href="#">Buy now</a>
7	<a href="#">66M1427100</a> Insulator	<a href="#">Buy now</a>
7	<a href="#">69V1427100</a> Insulator	<a href="#">Buy now</a>
8	<a href="#">66M1444000</a> Silencer assembly, intake	<a href="#">Buy now</a>
9	<a href="#">9321035M86</a> O-ring(6l2)	<a href="#">Buy now</a>
10	<a href="#">9011906M76</a> Bolt, with washer	<a href="#">Buy now</a>
11	<a href="#">9038706M79</a> Collar	<a href="#">Buy now</a>
12	<a href="#">66M1447700</a> Plate	<a href="#">Buy now</a>
13	<a href="#">66M4127100</a> Knob, choke	<a href="#">Buy now</a>
14	<a href="#">6894127300</a> Grommet	<a href="#">Buy now</a>

# Intake

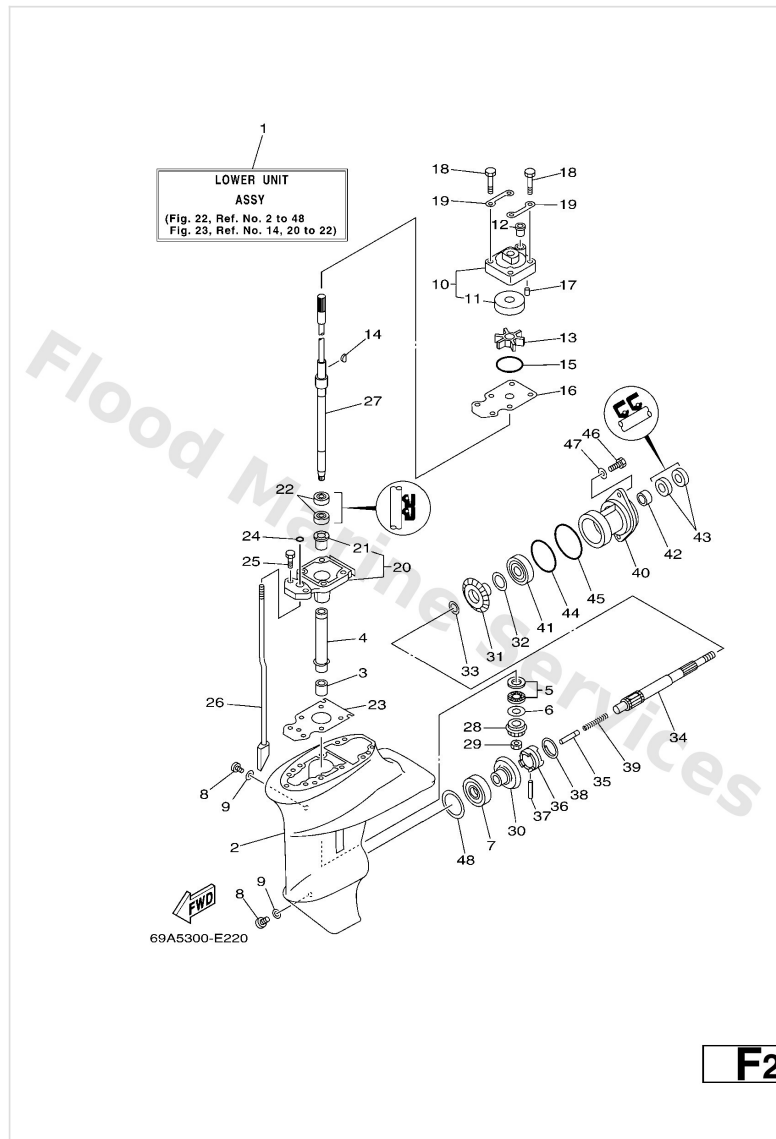


**B3**

Ref	Part	
15	<a href="#">66M4129200</a> Bush 2	<a href="#">Buy now</a>
16	<a href="#">66M4129800</a> Washer 2	<a href="#">Buy now</a>
17	<a href="#">9778050510</a> Screw, tapping(6u1)	<a href="#">Buy now</a>
18	<a href="#">66M4125200</a> Lever, choke 1	<a href="#">Buy now</a>
19	<a href="#">9024005M20</a> Pin, clevis	<a href="#">Buy now</a>
20	<a href="#">9020605005</a> Washer, wave(656)	<a href="#">Buy now</a>
21	<a href="#">9169020016</a> Pin, spring (677)	<a href="#">Buy now</a>
22	<a href="#">9020205088</a> Washer, plate (666)	<a href="#">Buy now</a>
23	<a href="#">6R54123700</a> Joint, link	<a href="#">Buy now</a>
24	<a href="#">66M4125600</a> Rod, choke 1	<a href="#">Buy now</a>
25	<a href="#">66M1537300</a> Pipe, breather	<a href="#">Buy now</a>
26	<a href="#">9046508M82</a> Clamp	<a href="#">Buy now</a>
27	<a href="#">9046508M83</a> Clamp	<a href="#">Buy now</a>
28	<a href="#">6D42456600</a> Bracket Filter	<a href="#">Buy now</a>

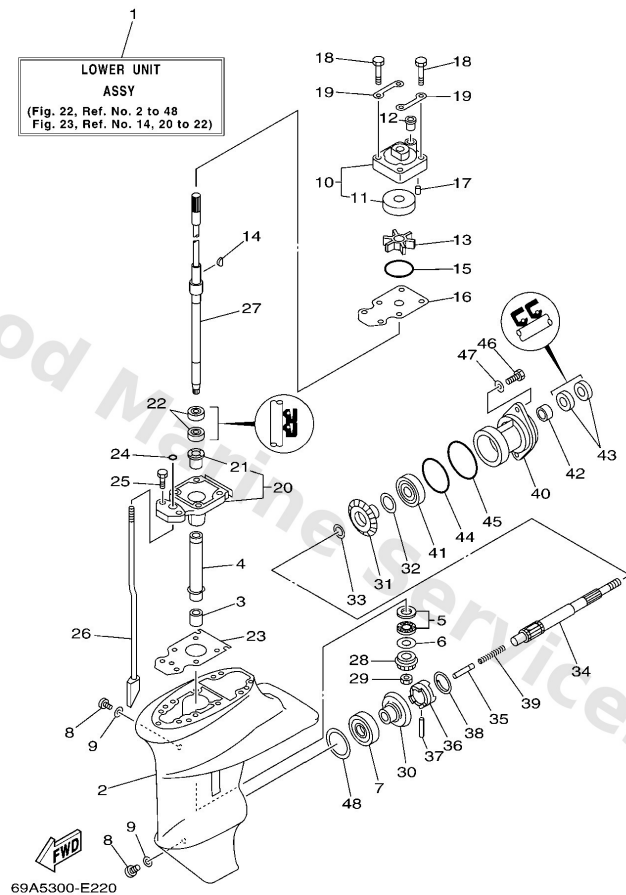


# Lower Casing & Drive 1



Ref	Part	
1	<a href="#">69A45300024D</a> Lower Unit assembly S (17.4")	<a href="#">Buy now</a>
1	<a href="#">69A45300114D</a> Lower Unit assembly L (22.4")	<a href="#">Buy now</a>
2	<a href="#">63V45311014D</a> Casing, lower L (22.4")	<a href="#">Buy now</a>
2	<a href="#">66M45311014D</a> Casing, lower S (17.4")	<a href="#">Buy now</a>
3	<a href="#">93315314V8</a> Bearing, needle (6e7)	<a href="#">Buy now</a>
4	<a href="#">63V4553600</a> Sleeve, drive shaft	<a href="#">Buy now</a>
5	<a href="#">9334141414</a> Bearing	<a href="#">Buy now</a>
6	<a href="#">6E84558710</a> Shim (t:1.13mm) UR	<a href="#">Buy now</a>
6	<a href="#">6E84558730</a> Shim (t:1.20mm) UR	<a href="#">Buy now</a>
7	<a href="#">9333200005</a> Brg,cyl-cal roller 0.19g nt	<a href="#">Buy now</a>
8	<a href="#">9034008002</a> Plug, straight screw	<a href="#">Buy now</a>
9	<a href="#">9043008020</a> Gasket	<a href="#">Buy now</a>
10	<a href="#">63V4430100</a> Water pump housing comp.	<a href="#">Buy now</a>
11	<a href="#">63V4432200</a> Insert, cartridge	<a href="#">Buy now</a>
12	<a href="#">6474436600</a> Damper, water seal 2	<a href="#">Buy now</a>

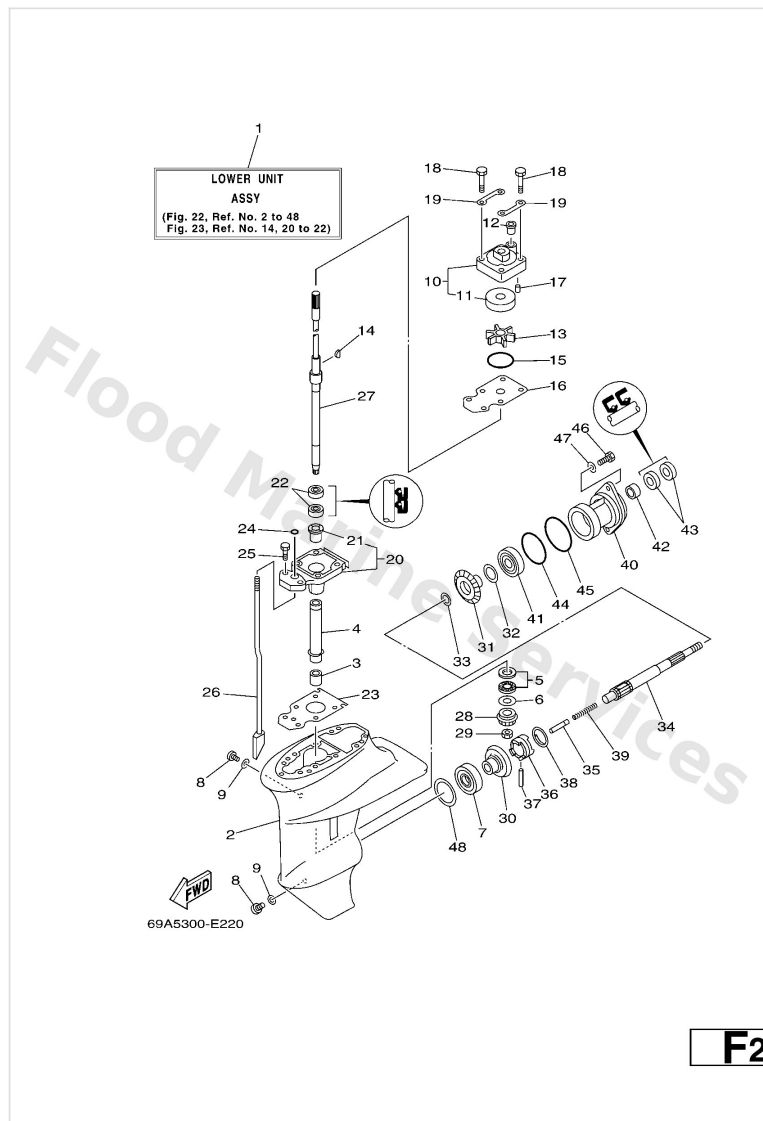
# Lower Casing & Drive 1



**F2**

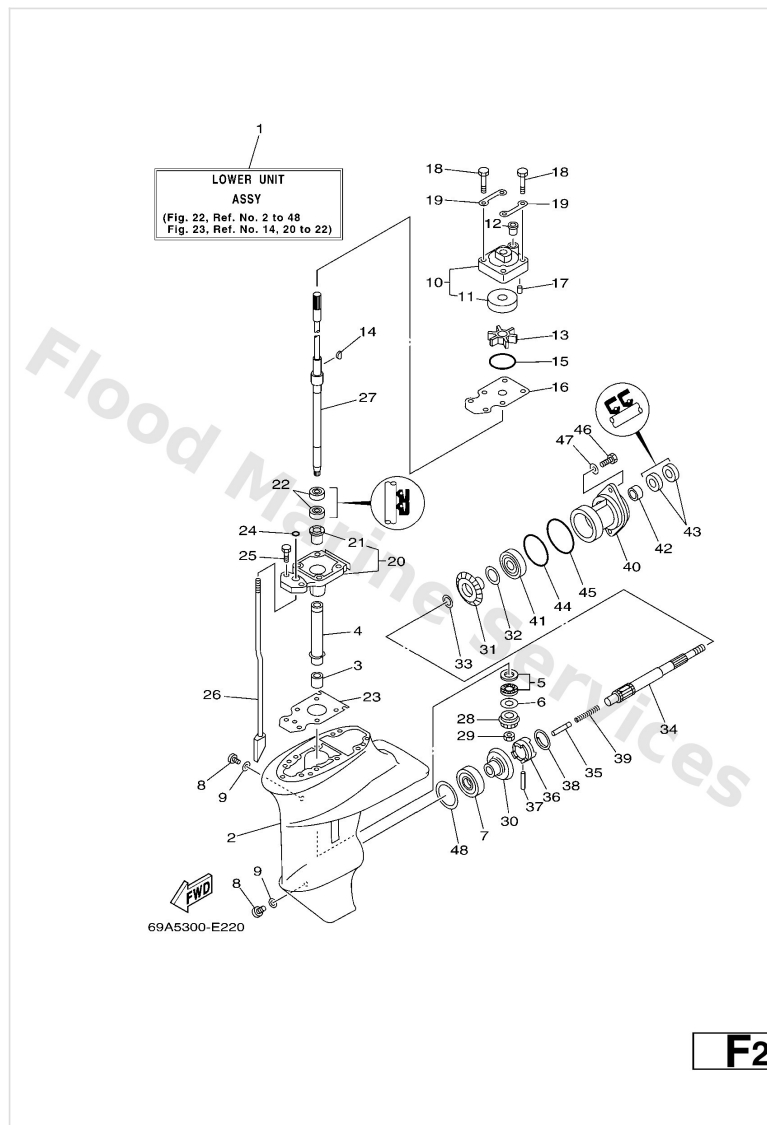
Ref	Part	
13	<a href="#">63V4435201</a> Impeller	<a href="#">Buy now</a>
14	<a href="#">6644433800</a> Key, woodruff	<a href="#">Buy now</a>
15	<a href="#">9321044398</a> O-ring(55x)	<a href="#">Buy now</a>
16	<a href="#">63V4432300</a> Outer plate, cartridge	<a href="#">Buy now</a>
17	<a href="#">9360412M07</a> Pin, dowel (688)	<a href="#">Buy now</a>
18	<a href="#">9708008045</a> Bolt, hexagon	<a href="#">Buy now</a>
19	<a href="#">63V4432800</a> Plate	<a href="#">Buy now</a>
20	<a href="#">63V45331005B</a> Housing, bearing	<a href="#">Buy now</a>
21	<a href="#">6264531609</a> Bushing, drive shaft 1	<a href="#">Buy now</a>
22	<a href="#">9310120001</a> Oil seal	<a href="#">Buy now</a>
23	<a href="#">63V45315A0</a> Packing, lower casing	<a href="#">Buy now</a>
24	<a href="#">9321006ME6</a> O-ring	<a href="#">Buy now</a>
25	<a href="#">9708008025</a> Screw, bind(j36)	<a href="#">Buy now</a>
26	<a href="#">63V4415000</a> Shift cam assembly S (17.4")	<a href="#">Buy now</a>
26	<a href="#">66M4415010</a> Shift cam assembly L (22.4")	<a href="#">Buy now</a>

# Lower Casing & Drive 1



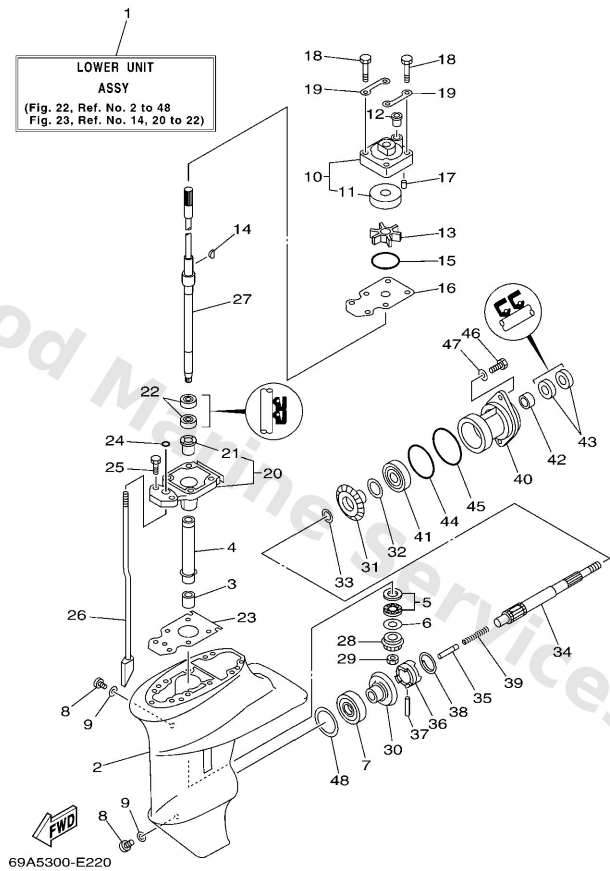
Ref	Part	
27	<a href="#">69A4551000</a> Drive Shaft assembly S (17.4")	<a href="#">Buy now</a>
27	<a href="#">69A4551010</a> Drive Shaft assembly L (22.4")	<a href="#">Buy now</a>
28	<a href="#">63V4555100</a> Pinion	<a href="#">Buy now</a>
29	<a href="#">9017908M06</a> Nut (6e7)	<a href="#">Buy now</a>
30	<a href="#">6E74556001</a> Gear	<a href="#">Buy now</a>
31	<a href="#">6E74557100</a> Gear 2	<a href="#">Buy now</a>
32	<a href="#">6264557700</a> Shim (t:0.10mm) UR	<a href="#">Buy now</a>
32	<a href="#">6264557710</a> Shim (t:0.20mm) UR	<a href="#">Buy now</a>
32	<a href="#">6264557720</a> Shim (t:0.30mm) UR	<a href="#">Buy now</a>
32	<a href="#">6264557730</a> Shim (t:0.40mm) UR	<a href="#">Buy now</a>
32	<a href="#">6264557740</a> Shim (t:0.50mm) UR	<a href="#">Buy now</a>
33	<a href="#">9020117682</a> Washer, plate (2k7)	<a href="#">Buy now</a>
34	<a href="#">6834561100</a> Shaft propeller	<a href="#">Buy now</a>
35	<a href="#">6504563500</a> Plunger, shift	<a href="#">Buy now</a>
36	<a href="#">6824563100</a> Clutch, dog	<a href="#">Buy now</a>

# Lower Casing & Drive 1



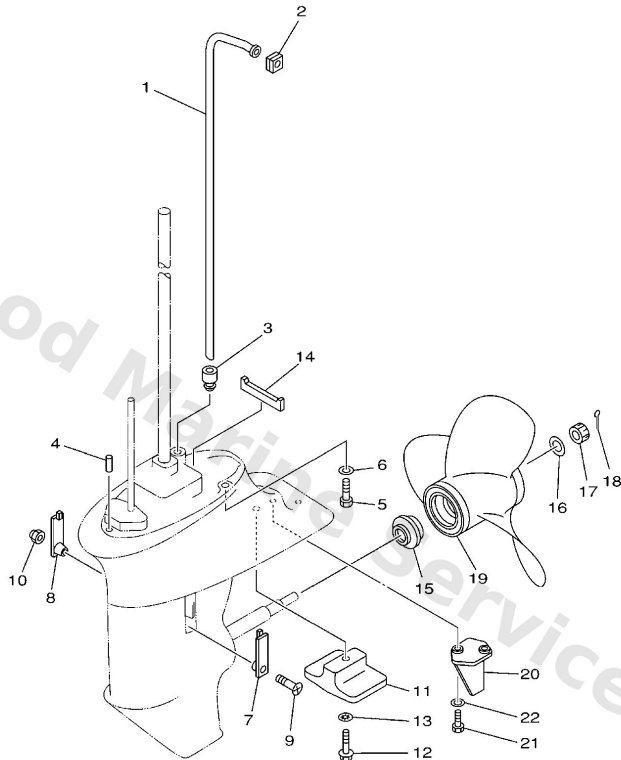
Ref	Part	
37	<a href="#">9025005010</a> Pin straight 648456320000	<a href="#">Buy now</a>
38	<a href="#">6484563300</a> Ring, cross pin	<a href="#">Buy now</a>
39	<a href="#">9050114M06</a> Spring, compression	<a href="#">Buy now</a>
40	<a href="#">68345361024D</a> Cap, lower casing	<a href="#">Buy now</a>
41	<a href="#">9330600501</a> Bearing(1ff)	<a href="#">Buy now</a>
42	<a href="#">93315317U2</a> Brg,cyl-cal roller 14g (683)	<a href="#">Buy now</a>
43	<a href="#">9310117054</a> Oil seal (17x30x6-650)	<a href="#">Buy now</a>
44	<a href="#">9321057M09</a> O-ring (683)	<a href="#">Buy now</a>
45	<a href="#">9321056M80</a> O-ring(6j8)	<a href="#">Buy now</a>
46	<a href="#">9709506020</a> Bolt(7u8)	<a href="#">Buy now</a>
47	<a href="#">9299506600</a> Washer, plain (646)	<a href="#">Buy now</a>
48	<a href="#">6644556701</a> Shim (t:0.10mm) UR	<a href="#">Buy now</a>
48	<a href="#">6644556710</a> Shim (t:0.12mm) UR	<a href="#">Buy now</a>
48	<a href="#">6644556720</a> Shim (t:0.15mm) UR	<a href="#">Buy now</a>
48	<a href="#">6644556730</a> Shim (t:0.18mm) UR	<a href="#">Buy now</a>

# Lower Casing & Drive 1



Ref	Part	
48	<a href="#">6644556740</a> Shim (t:0.30mm) UR	<a href="#">Buy now</a>
48	<a href="#">6644556750</a> Shim (t:0.40mm) UR	<a href="#">Buy now</a>
48	<a href="#">6644556760</a> Shim (t:0.50mm) UR	<a href="#">Buy now</a>

## Lower Casing & Drive 2

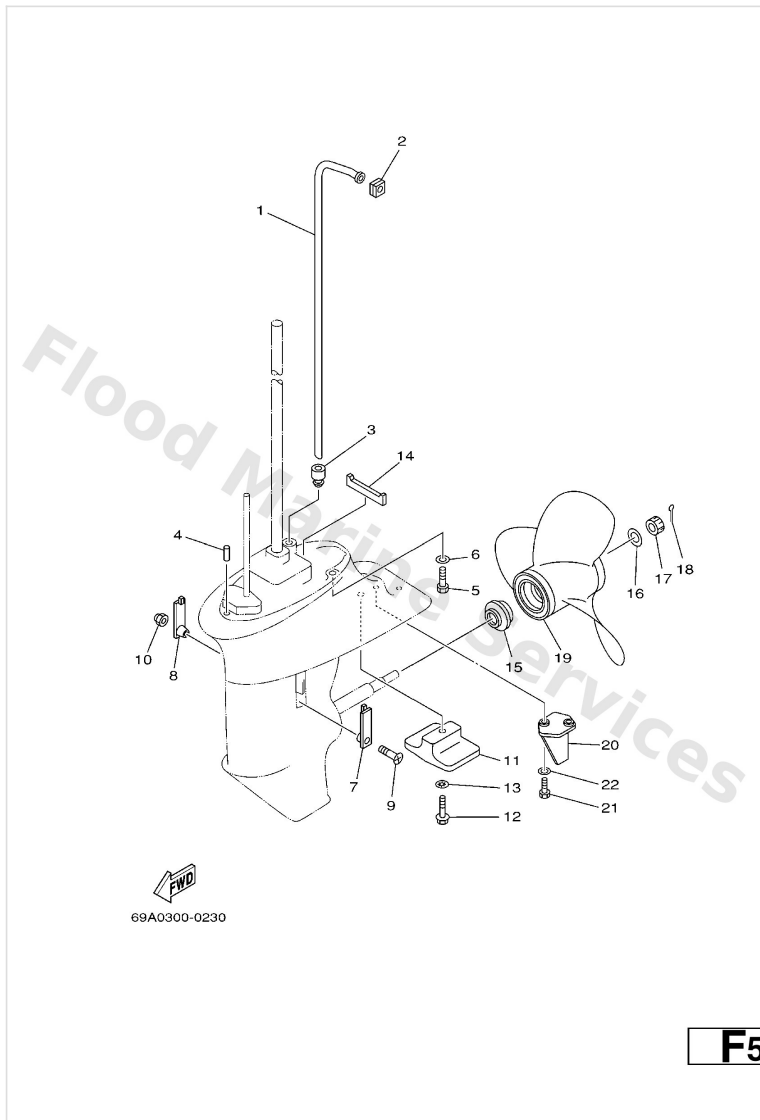


69A0300-0230

**F5**

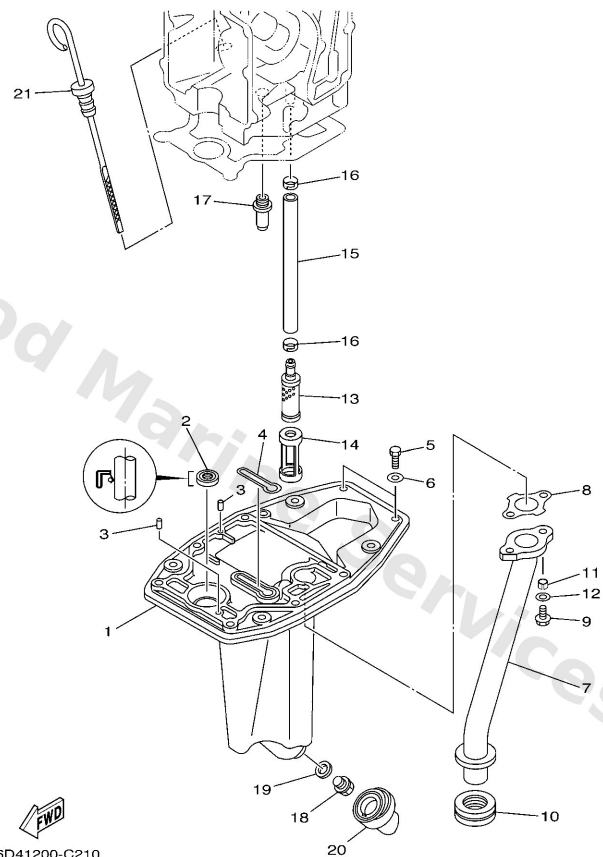
Ref	Part	
1	<a href="#">66M4436100</a> Tube, Water 1 S (17.4")	<a href="#">Buy now</a>
1	<a href="#">66M4436110</a> Tube, water L (22.4")	<a href="#">Buy now</a>
2	<a href="#">63V4436510</a> Damper, water seal 1	<a href="#">Buy now</a>
3	<a href="#">63V4436800</a> Rubber, water seal 4	<a href="#">Buy now</a>
4	<a href="#">9360412M07</a> Pin, dowel (688)	<a href="#">Buy now</a>
5	<a href="#">9707508030</a> Bolt, hexagon (fj1)	<a href="#">Buy now</a>
6	<a href="#">9299508600</a> Washer, plain (663)	<a href="#">Buy now</a>
7	<a href="#">6G14521400</a> Cover, water inlet	<a href="#">Buy now</a>
8	<a href="#">63V4521500</a> Cover, water inlet	<a href="#">Buy now</a>
9	<a href="#">9015205M04</a> Screw, countersunk	<a href="#">Buy now</a>
10	<a href="#">9018505002</a> Nut nylon (sus)(ex4)	<a href="#">Buy now</a>
11	<a href="#">61N4525101</a> Anode	<a href="#">Buy now</a>
12	<a href="#">9589506030</a> Bolt, flange deep recess	<a href="#">Buy now</a>
13	<a href="#">9299006300</a> Washer, tooth	<a href="#">Buy now</a>
14	<a href="#">63V4537500</a> Damper, seal	<a href="#">Buy now</a>

## Lower Casing & Drive 2



Ref	Part	
15	<a href="#">6E74598701</a> Spacer	<a href="#">Buy now</a>
16	<a href="#">9020110M01</a> Washer, plate(6m7)	<a href="#">Buy now</a>
17	<a href="#">9017110M01</a> Nut castle (683)	<a href="#">Buy now</a>
18	<a href="#">9149030020</a> Pin cotter	<a href="#">Buy now</a>
19	<a href="#">63V4594300EL</a> Propeller (3x9-1/4 x11 -j1) UR	<a href="#">Buy now</a>
19	<a href="#">63V4594500EL</a> Propeller (3x9-1/4 x9 -j1) UR	<a href="#">Buy now</a>
19	<a href="#">63V4594700EL</a> Propeller (3x9-1/4 x8 -j) UR	<a href="#">Buy now</a>
19	<a href="#">63V4595200EL</a> Propeller (3x9-1/4 x10 -j1) UR	<a href="#">Buy now</a>
19	<a href="#">6834594100EL</a> Propeller (3x9-1/4"x12"-j) UR	<a href="#">Buy now</a>
19	<a href="#">6834594500EL</a> Propeller (3X9-1/4"X9"-j) UR	<a href="#">Buy now</a>
19	<a href="#">6834595200EL</a> Propeller (3X9-1/4"x9-3/4"-j) UR	<a href="#">Buy now</a>
20	<a href="#">66M4537100</a> Tab-trim S (17.4")	<a href="#">Buy now</a>
21	<a href="#">9709506016</a> Bolt, hexagon deep recess S (17.4")	<a href="#">Buy now</a>
22	<a href="#">9299506600</a> Washer, plain (646) S (17.4")	<a href="#">Buy now</a>

# Oil Pan

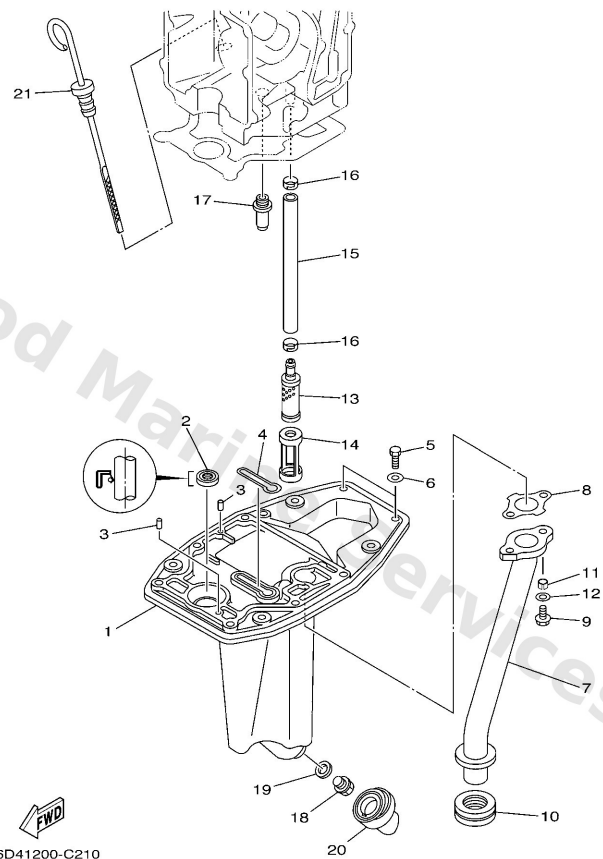


**F1**

Ref	Part	
1	<a href="#">66M41137005B</a> Guide, exhaust	<a href="#">Buy now</a>
2	<a href="#">9310112M63</a> Oil seal	<a href="#">Buy now</a>
3	<a href="#">9360612019</a> Pin, dowel (614)	<a href="#">Buy now</a>
4	<a href="#">66M1135500</a> Seal, cylinder 1	<a href="#">Buy now</a>
5	<a href="#">9709506020</a> Bolt(7u8)	<a href="#">Buy now</a>
6	<a href="#">9299506600</a> Washer, plain (646)	<a href="#">Buy now</a>
7	<a href="#">6D4411310094</a> Manifold, Ext. 1	<a href="#">Buy now</a>
8	<a href="#">66M4113301</a> Gasket, exhaust manifold 1	<a href="#">Buy now</a>
9	<a href="#">9011906090</a> Bolt, With Washer	<a href="#">Buy now</a>
10	<a href="#">6D44113800</a> Seal, ext. 1	<a href="#">Buy now</a>
11	<a href="#">9038705008</a> -	<a href="#">Buy now</a>
12	<a href="#">9020106015</a> Washer, plate	<a href="#">Buy now</a>
13	<a href="#">66M1342100</a> Strainer 2	<a href="#">Buy now</a>
14	<a href="#">66M1341700</a> Cover, Strainer	<a href="#">Buy now</a>
15	<a href="#">66M1341600</a> Pipe Oil 1	<a href="#">Buy now</a>



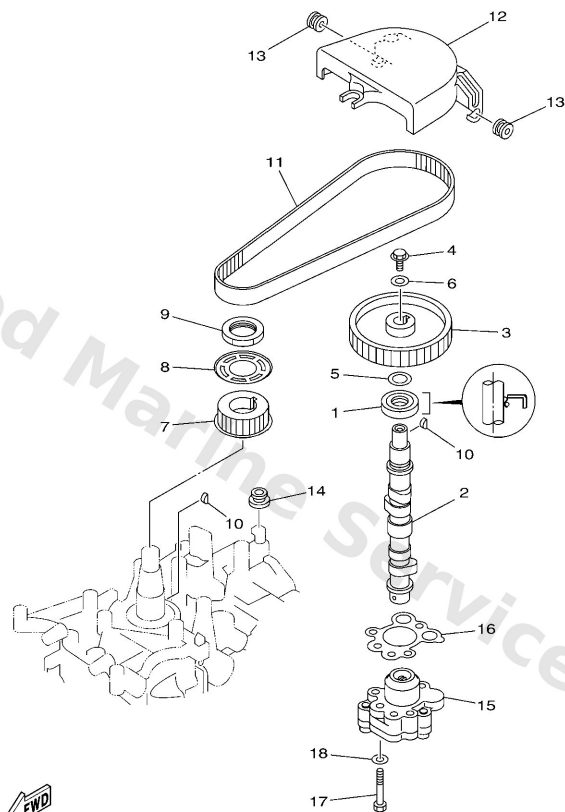
# Oil Pan



**F1**

Ref	Part	
16	<a href="#">66M2435100</a> Band 1	<a href="#">Buy now</a>
17	<a href="#">6G81157500</a> Relief valve ass'y	<a href="#">Buy now</a>
18	<a href="#">9034014M06</a> Plug, straight screw(62y)	<a href="#">Buy now</a>
19	<a href="#">9043014M09</a> Gasket	<a href="#">Buy now</a>
20	<a href="#">66M1531600</a> Damper 1	<a href="#">Buy now</a>
21	<a href="#">66M1536200</a> Plug, Oil Level	<a href="#">Buy now</a>

# Oil Pump

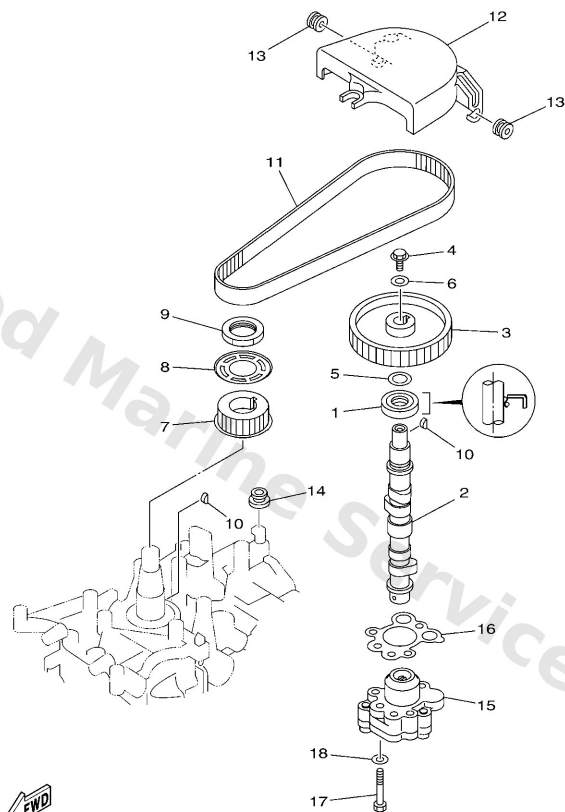


66R4300-D080

**B7**

Ref	Part	
1	<a href="#">9310218M21</a> Oil seal (6g8)	<a href="#">Buy now</a>
2	<a href="#">66M1217110</a> Camshaft 1	<a href="#">Buy now</a>
3	<a href="#">66M115370094</a> Gear, driven	<a href="#">Buy now</a>
4	<a href="#">9010506M14</a> Bolt (6e0)	<a href="#">Buy now</a>
5	<a href="#">9020113201</a> Washer 6474283300	<a href="#">Buy now</a>
6	<a href="#">9020106M94</a> Washer (6g8)	<a href="#">Buy now</a>
7	<a href="#">66M1153610</a> Gear, drive	<a href="#">Buy now</a>
8	<a href="#">66M1155700</a> Washer 1	<a href="#">Buy now</a>
9	<a href="#">9017028M37</a> Nut	<a href="#">Buy now</a>
10	<a href="#">9028003M01</a> Key woodruff 146115450000	<a href="#">Buy now</a>
11	<a href="#">66M4624100</a> Belt	<a href="#">Buy now</a>
12	<a href="#">66M4629700</a> Cover, dust	<a href="#">Buy now</a>
13	<a href="#">9048010M16</a> Grommet(6j8)	<a href="#">Buy now</a>
14	<a href="#">9048012072</a> Grommet(53y)	<a href="#">Buy now</a>
15	<a href="#">66M1330010</a> Oil Pump assembly	<a href="#">Buy now</a>

# Oil Pump

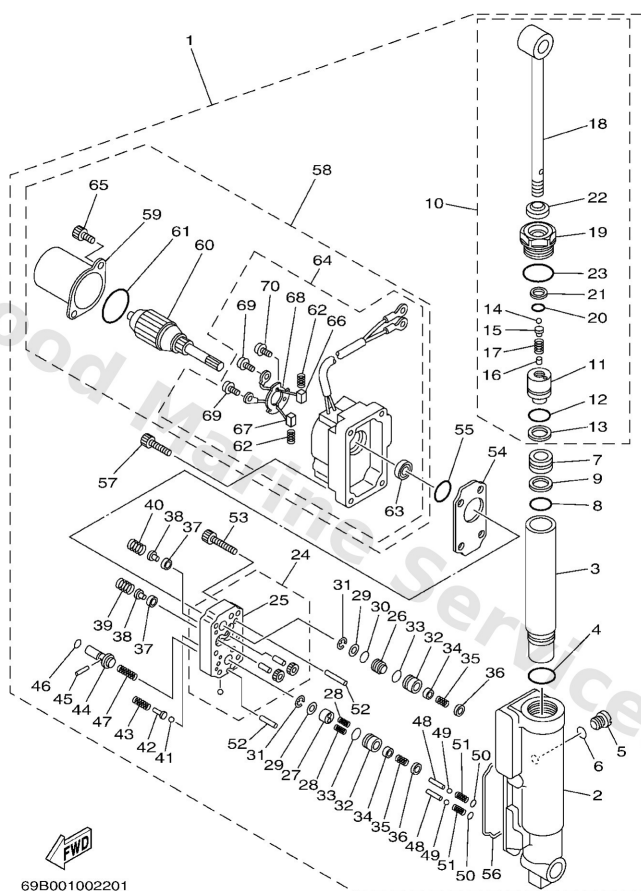


66R4300-D080

**B7**

Ref	Part	
16	<a href="#">66M1332910</a> Gasket, pump cover	<a href="#">Buy now</a>
17	<a href="#">9709506035</a> Bolt(j52)	<a href="#">Buy now</a>
18	<a href="#">9299506600</a> Washer, plain (646)	<a href="#">Buy now</a>

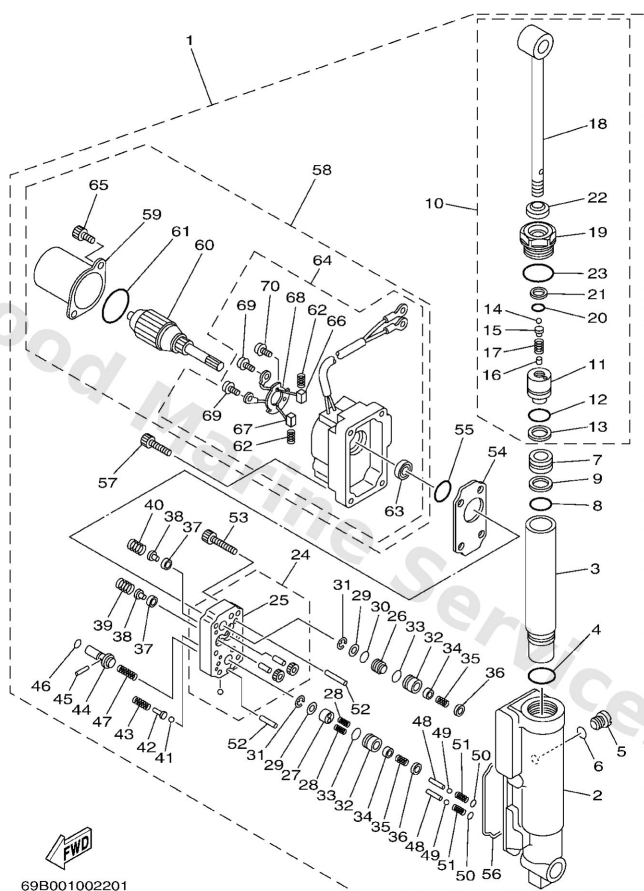
# Power Tilt Assy



**E4**

Ref	Part	
1	<a href="#">69A43840004D</a> Power tilt assembly	<a href="#">Buy now</a>
2	<a href="#">69A4380K00</a> Cylinder, tilt sub assembly	<a href="#">Buy now</a>
3	<a href="#">69A2247100</a> Case, cylinder	<a href="#">Buy now</a>
4	<a href="#">9321027666</a> O-ring(47x)	<a href="#">Buy now</a>
5	<a href="#">6H14388E11</a> Plug, tapper screw	<a href="#">Buy now</a>
6	<a href="#">9321007003</a> O-ring (11m)	<a href="#">Buy now</a>
7	<a href="#">69A4381400</a> Piston, free	<a href="#">Buy now</a>
8	<a href="#">9321021276</a> O-ring	<a href="#">Buy now</a>
9	<a href="#">69A4387200</a> Ring, back up	<a href="#">Buy now</a>
10	<a href="#">69A4381000</a> Piston sub assembly	<a href="#">Buy now</a>
11	<a href="#">69A4380D00</a> Piston comp.	<a href="#">Buy now</a>
14	<a href="#">9350532038</a> Ball(7fk)	<a href="#">Buy now</a>
15	<a href="#">65W4386A00</a> Pin, absorber valve	<a href="#">Buy now</a>
16	<a href="#">9360406136</a> Pin, dowel	<a href="#">Buy now</a>
17	<a href="#">69A4385700</a> Spring, absorber valve	<a href="#">Buy now</a>

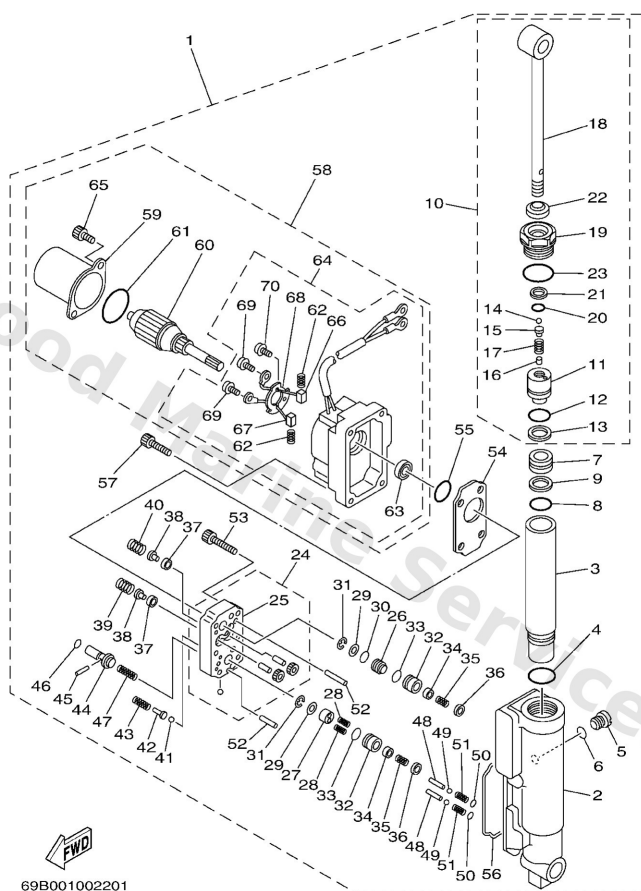
# Power Tilt Assy



**E4**

Ref	Part	
18	<a href="#">69A4380100</a> Rod	<a href="#">Buy now</a>
19	<a href="#">69A4381101</a> Screw, cylinder end	<a href="#">Buy now</a>
20	<a href="#">6H14386600</a> O-ring	<a href="#">Buy now</a>
21	<a href="#">69A4387100</a> Ring, back up	<a href="#">Buy now</a>
22	<a href="#">69A4381200</a> Seal, dust	<a href="#">Buy now</a>
23	<a href="#">69A4386900</a> O-ring	<a href="#">Buy now</a>
24	<a href="#">69A4383000</a> Gear pump assembly	<a href="#">Buy now</a>
25	<a href="#">69A4380C00</a> Gear housing assembly	<a href="#">Buy now</a>
26	<a href="#">69A4384100</a> Piston, shuttle	<a href="#">Buy now</a>
27	<a href="#">69A4384M00</a> Piston, shuttle 2	<a href="#">Buy now</a>
28	<a href="#">62Y4389400</a> Spring, shuttle return	<a href="#">Buy now</a>
29	<a href="#">69A4384F00</a> Seal, main valve	<a href="#">Buy now</a>
30	<a href="#">6H14388300</a> O-ring	<a href="#">Buy now</a>
31	<a href="#">9900103600</a> Circlip(6I5)	<a href="#">Buy now</a>
32	<a href="#">69A4382G00</a> Valve Seat	<a href="#">Buy now</a>

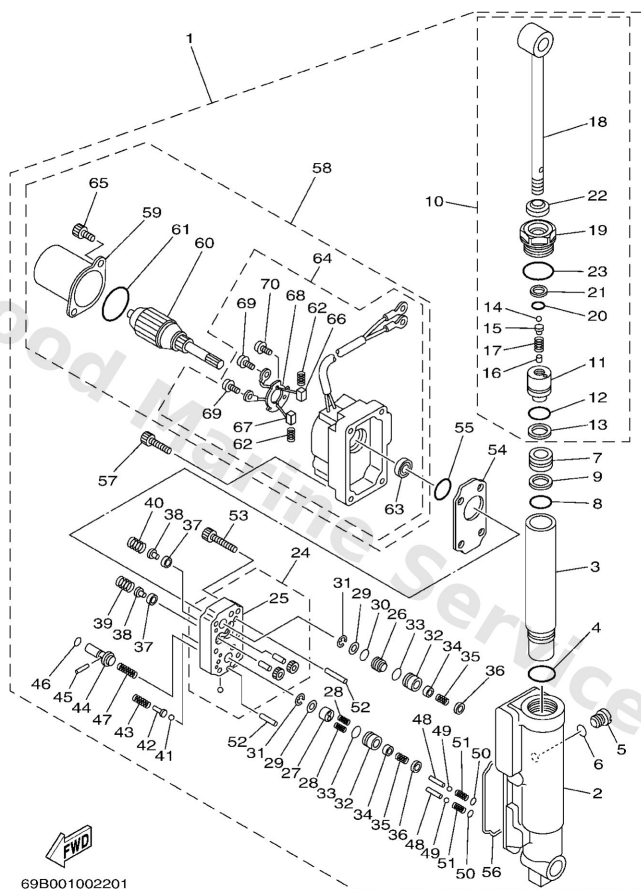
# Power Tilt Assy



**E4**

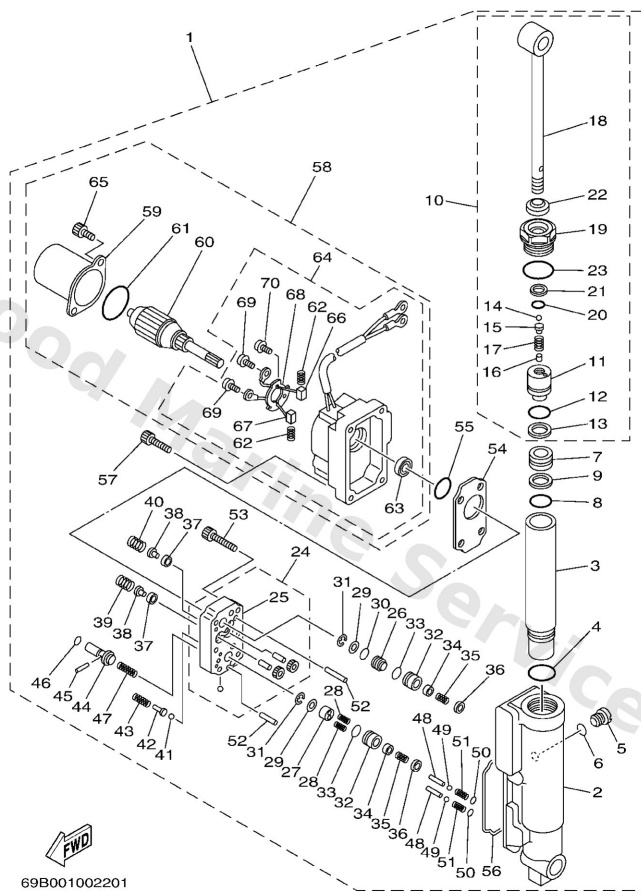
Ref	Part	
33	<a href="#">9321012N52</a> O-ring	<a href="#">Buy now</a>
34	<a href="#">6T44380800</a> Seat valve comp. 1	<a href="#">Buy now</a>
35	<a href="#">6T44385300</a> Spring, main valve	<a href="#">Buy now</a>
36	<a href="#">6H14381600</a> Filter 1	<a href="#">Buy now</a>
37	<a href="#">6H14384G11</a> Seal, relief valve	<a href="#">Buy now</a>
38	<a href="#">6H14384410</a> Pin, valve support	<a href="#">Buy now</a>
39	<a href="#">69A4385500</a> Spring, up relief	<a href="#">Buy now</a>
40	<a href="#">6H14385610</a> Spring, down relief	<a href="#">Buy now</a>
41	<a href="#">9350108001</a> Ball	<a href="#">Buy now</a>
42	<a href="#">69A4386A00</a> Pin, absorber valve	<a href="#">Buy now</a>
43	<a href="#">69A4382400</a> Spring, down relief 2	<a href="#">Buy now</a>
44	<a href="#">69A4384800</a> Rod, manual release	<a href="#">Buy now</a>
45	<a href="#">9360215250</a> Pin, dowel	<a href="#">Buy now</a>
46	<a href="#">9321006001</a> O-ring (26h)	<a href="#">Buy now</a>
47	<a href="#">69A4385400</a> Spring, manual release	<a href="#">Buy now</a>

# Power Tilt Assy



Ref	Part	
48	<a href="#">69A4381G00</a> Pin 1	<a href="#">Buy now</a>
51	<a href="#">69A4384H00</a> Spring	<a href="#">Buy now</a>
52	<a href="#">9360614081</a> Pin,dowel(296)	<a href="#">Buy now</a>
53	<a href="#">9131705025</a> Bolt, socket	<a href="#">Buy now</a>
54	<a href="#">69A4381601</a> Filter 1	<a href="#">Buy now</a>
55	<a href="#">N354386210</a> O-ring	<a href="#">Buy now</a>
56	<a href="#">69A2312900</a> Gasket, drain plug	<a href="#">Buy now</a>
57	<a href="#">69A4387800</a> Bolt, socket	<a href="#">Buy now</a>
58	<a href="#">69A4388000</a> Motor assembly	<a href="#">Buy now</a>
59	<a href="#">65W4380400</a> Stator assembly	<a href="#">Buy now</a>
60	<a href="#">65W4380500</a> Armature assembly	<a href="#">Buy now</a>
61	<a href="#">65W4386900</a> O-ring	<a href="#">Buy now</a>
62	<a href="#">65W4386K00</a> Spring, brush	<a href="#">Buy now</a>
63	<a href="#">65W4388200</a> Oil seal	<a href="#">Buy now</a>
64	<a href="#">69A4388100</a> Frame, End	<a href="#">Buy now</a>

## Power Tilt Assy

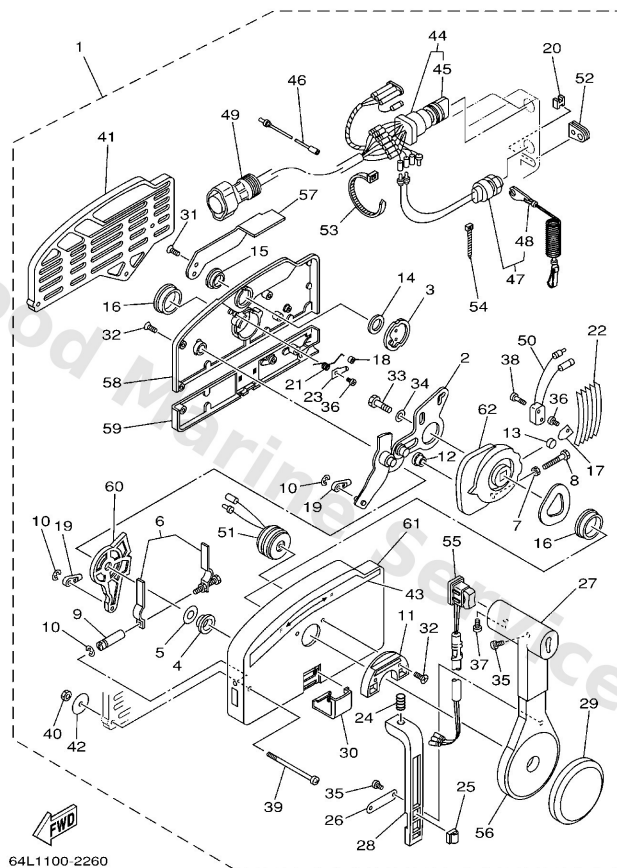


**E4**

Ref	Part	
65	<a href="#">65W4388700</a> Bolt, screw	<a href="#">Buy now</a>
66	<a href="#">65W4389200</a> Brush 2	<a href="#">Buy now</a>
67	<a href="#">65W4389100</a> Brush 1	<a href="#">Buy now</a>
68	<a href="#">65W4380F00</a> Plate, brush holder	<a href="#">Buy now</a>
69	<a href="#">65W4387900</a> Screw, with washer	<a href="#">Buy now</a>
70	<a href="#">65W4388E00</a> Bolt	<a href="#">Buy now</a>



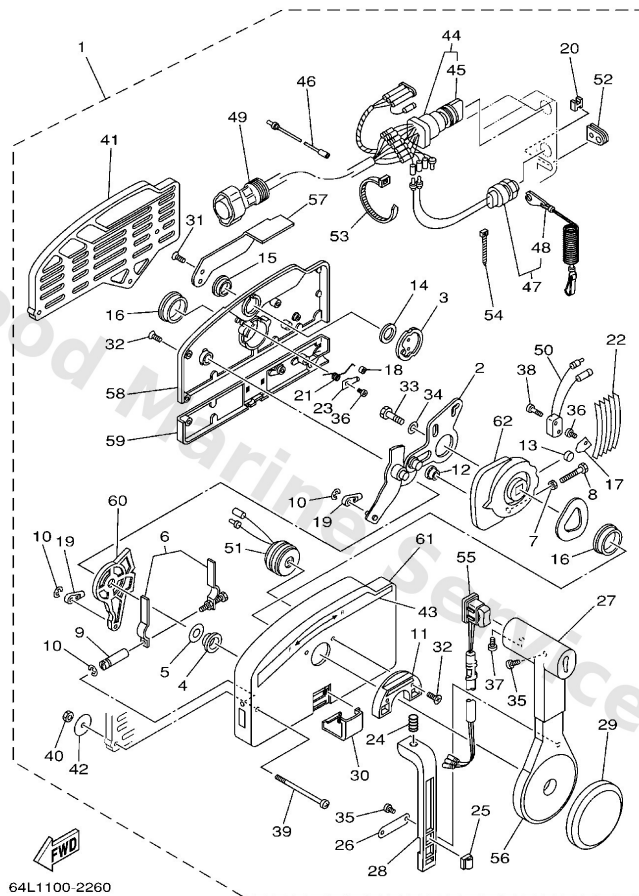
# Remote Control Assy



**A6**

Ref	Part	
1	<a href="#">7034820517</a> Remote control assembly (10p, ptt) AP WITH PT/T SW.	<a href="#">Buy now</a>
2	<a href="#">7034826101</a> Arm, throttle	<a href="#">Buy now</a>
3	<a href="#">7034815300</a> Shaft, free accel.	<a href="#">Buy now</a>
4	<a href="#">7034823500</a> Bushing	<a href="#">Buy now</a>
5	<a href="#">7034826800</a> Spacer 3	<a href="#">Buy now</a>
6	<a href="#">7034826400</a> Throttle, friction	<a href="#">Buy now</a>
7	<a href="#">9538005600</a> Nut, hexagon (663)	<a href="#">Buy now</a>
8	<a href="#">9738005025</a> Bolt	<a href="#">Buy now</a>
9	<a href="#">7034826500</a> Shaft Friction	<a href="#">Buy now</a>
10	<a href="#">9343006024</a> Circlip (701)	<a href="#">Buy now</a>
11	<a href="#">7034824500</a> Plate, lock	<a href="#">Buy now</a>
12	<a href="#">7034825200</a> Roller, cam	<a href="#">Buy now</a>
13	<a href="#">7014824800</a> Roller, free accel	<a href="#">Buy now</a>
14	<a href="#">7034819800</a> Washer, wave 3	<a href="#">Buy now</a>
15	<a href="#">7034824300</a> Bushing 3	<a href="#">Buy now</a>

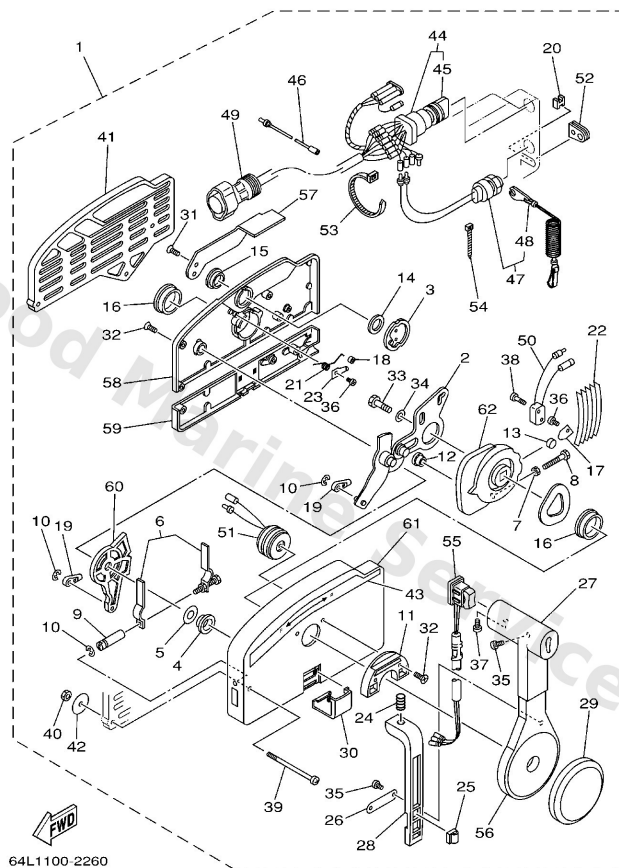
# Remote Control Assy



**A6**

Ref	Part	
16	<a href="#">7034823600</a> Bushing	<a href="#">Buy now</a>
17	<a href="#">7034818900</a> Retainer	<a href="#">Buy now</a>
18	<a href="#">7034823400</a> Roller, detent	<a href="#">Buy now</a>
19	<a href="#">7034834501</a> Cable end, remote control 2	<a href="#">Buy now</a>
20	<a href="#">7034835800</a> Anchor, cable	<a href="#">Buy now</a>
21	<a href="#">7034824400</a> Spring, free accel.	<a href="#">Buy now</a>
22	<a href="#">7034823800</a> Spring, detent	<a href="#">Buy now</a>
23	<a href="#">7034824600</a> Spacer 1	<a href="#">Buy now</a>
24	<a href="#">7034822700</a> Spring, neutral lock	<a href="#">Buy now</a>
25	<a href="#">7038259400</a> Clamp WITH PT/T SW.	<a href="#">Buy now</a>
26	<a href="#">7034822600</a> Plate, stopper	<a href="#">Buy now</a>
27	<a href="#">7034822200</a> Grip, control lever SINGLE	<a href="#">Buy now</a>
28	<a href="#">7034822300</a> Lock, neutral	<a href="#">Buy now</a>
29	<a href="#">7034822500</a> Cover	<a href="#">Buy now</a>
30	<a href="#">7034821900</a> Cover, lead	<a href="#">Buy now</a>

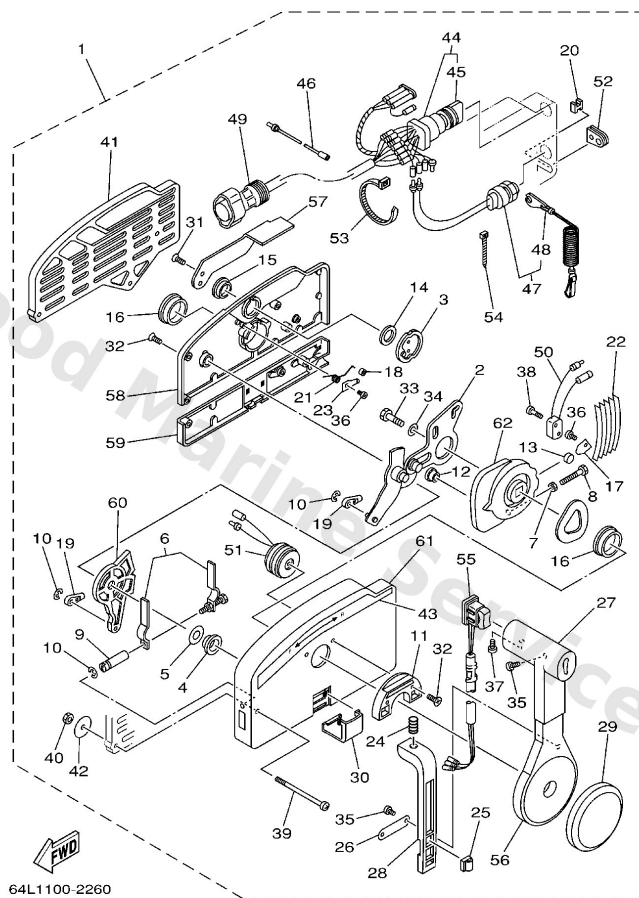
# Remote Control Assy



**A6**

Ref	Part	
31	<a href="#">7034828100</a> Screw, flat head	<a href="#">Buy now</a>
32	<a href="#">7034828200</a> Screw	<a href="#">Buy now</a>
33	<a href="#">9738008030</a> Bolt, hexagon (fj1)	<a href="#">Buy now</a>
34	<a href="#">9299008600</a> Washer, plain (663)	<a href="#">Buy now</a>
35	<a href="#">9858004010</a> Screw, pan head (e56)	<a href="#">Buy now</a>
36	<a href="#">9858004006</a> Screw, pan head (7h3)	<a href="#">Buy now</a>
37	<a href="#">9858005010</a> Screw, pan head(62x)	<a href="#">Buy now</a>
38	<a href="#">9858003015</a> Screw, pan head (n151)	<a href="#">Buy now</a>
39	<a href="#">7034829110</a> Screw	<a href="#">Buy now</a>
40	<a href="#">9538006600</a> Nut(661)	<a href="#">Buy now</a>
41	<a href="#">7034829310</a> Spacer, remote control <b>SINGLE</b>	<a href="#">Buy now</a>
42	<a href="#">7014828700</a> Washer 1	<a href="#">Buy now</a>
43	<a href="#">7034821500</a> Graphic	<a href="#">Buy now</a>
44	<a href="#">7038251043</a> Main switch assembly	<a href="#">Buy now</a>
45	<a href="#">7038257700</a> Cap, key	<a href="#">Buy now</a>

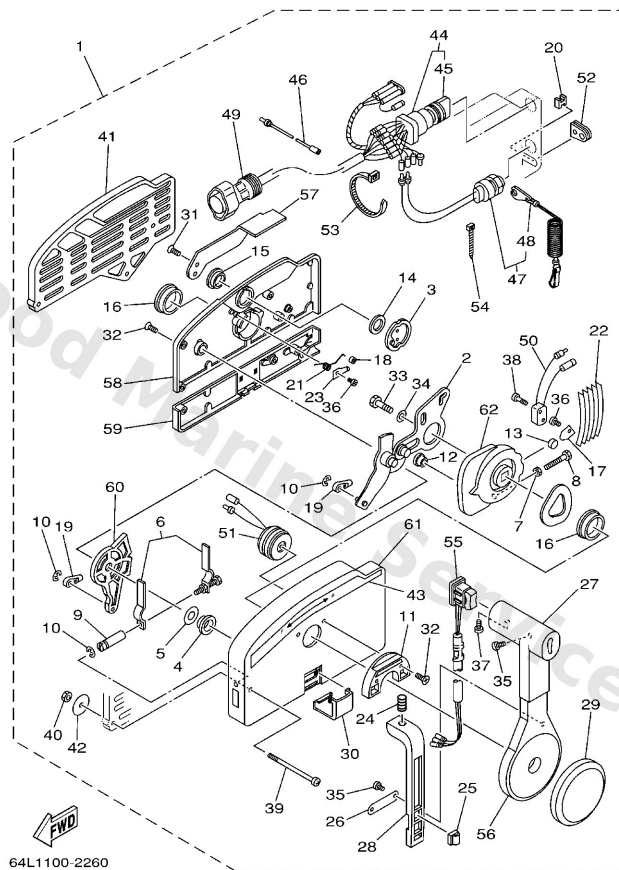
# Remote Control Assy



**A6**

Ref	Part	
46	<a href="#">7038253100</a> Wire, lead	<a href="#">Buy now</a>
47	<a href="#">6888257501</a> Engine stop switch assembly	<a href="#">Buy now</a>
48	<a href="#">6828255600</a> Lanyard, stop switch	<a href="#">Buy now</a>
49	<a href="#">6888258A20</a> 10p main harness mec 2m (6ft) L)5M (10P)	<a href="#">Buy now</a>
50	<a href="#">7038254000</a> Neutral switch assembly	<a href="#">Buy now</a>
51	<a href="#">7038338302</a> Buzzer	<a href="#">Buy now</a>
52	<a href="#">7034828400</a> Grommet	<a href="#">Buy now</a>
53	<a href="#">7038259100</a> Band	<a href="#">Buy now</a>
54	<a href="#">7038259200</a> Band	<a href="#">Buy now</a>
55	<a href="#">7038256302</a> Trim & tilt switch assembly WITH PT/T SW.	<a href="#">Buy now</a>
56	<a href="#">7034822100</a> Grip	<a href="#">Buy now</a>
57	<a href="#">7034815200</a> Knob, free accel	<a href="#">Buy now</a>
58	<a href="#">7034821200</a> Rear housing	<a href="#">Buy now</a>
59	<a href="#">7034821300</a> Back, panel	<a href="#">Buy now</a>
60	<a href="#">7034827100</a> Arm, shift	<a href="#">Buy now</a>

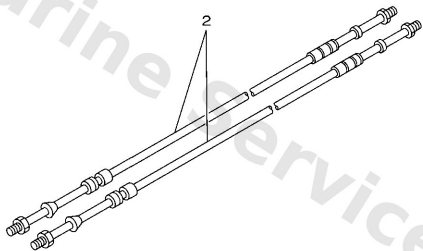
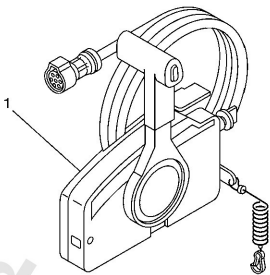
# Remote Control Assy



**A6**

Ref	Part	
61	<a href="#">7034821101</a> Housing,1	<a href="#">Buy now</a>
62	<a href="#">7034823200</a> Drive gear	<a href="#">Buy now</a>

# Remote Control Box

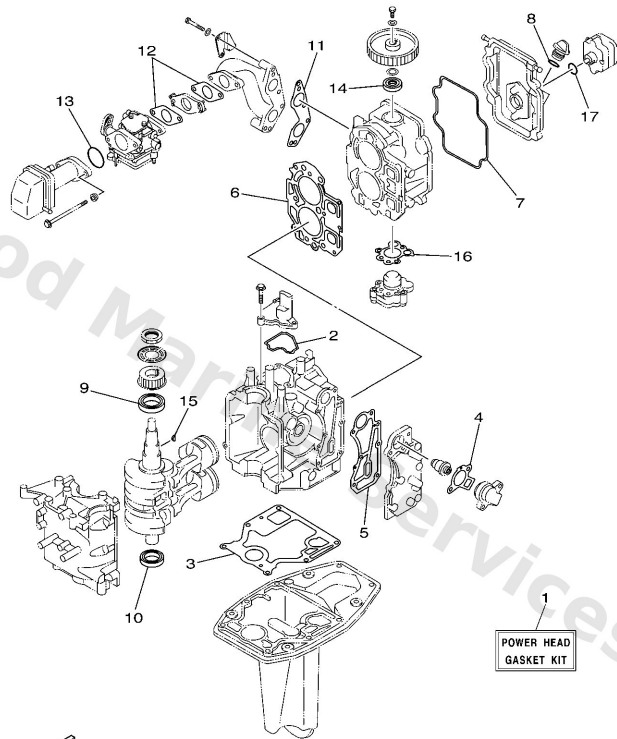


  
67M0100-8280

**A5**

Ref	Part	
1	<a href="#">7034820517</a> Remote control assembly (10p, ptt) AP WITH PT/T SW.	<a href="#">Buy now</a>
2	<a href="#">7014831080</a> Cable, Remote Control L=10F UR	<a href="#">Buy now</a>
2	<a href="#">7014831090</a> Cable, Remote Control L=11F UR	<a href="#">Buy now</a>
2	<a href="#">7014832000</a> Cable, Remote Control L=12F UR	<a href="#">Buy now</a>

## Repair Kit 1

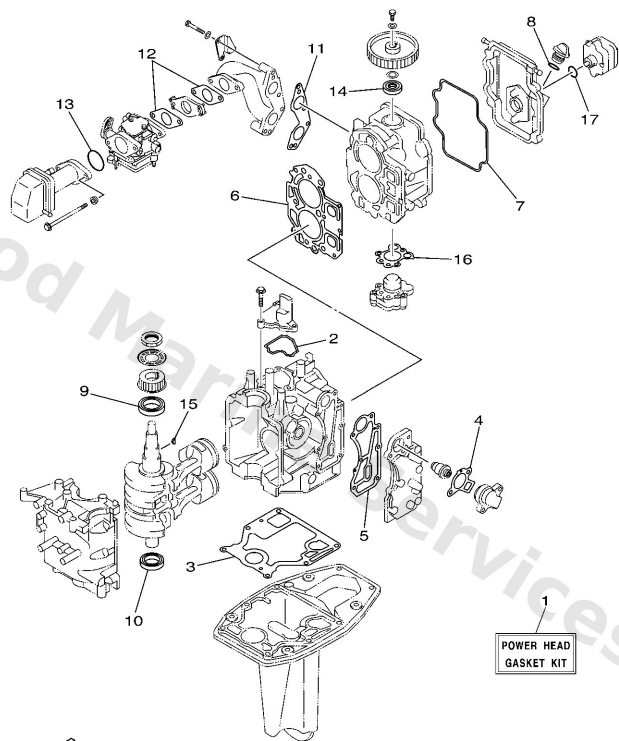


6D41200-C280

**B2**

Ref	Part	
1	<a href="#">66MW000102</a> Power head gasket kit	<a href="#">Buy now</a>
2	<a href="#">66M1135700</a> Seal, cylinder 3	<a href="#">Buy now</a>
3	<a href="#">66M1135110</a> Gasket, cylinder	<a href="#">Buy now</a>
4	<a href="#">62Y1241400</a> Gasket, cover	<a href="#">Buy now</a>
5	<a href="#">66M4111401</a> Gasket, exhaust outer cover	<a href="#">Buy now</a>
6	<a href="#">66M1118110</a> Gasket, cylinder head 1	<a href="#">Buy now</a>
7	<a href="#">66M1135600</a> Seal, cylinder 2	<a href="#">Buy now</a>
8	<a href="#">9321024M79</a> O-ring	<a href="#">Buy now</a>
9	<a href="#">9310235M51</a> Oil seal	<a href="#">Buy now</a>
10	<a href="#">9310225M52</a> Oil seal	<a href="#">Buy now</a>
11	<a href="#">66M1364500</a> Gasket, manifold 1	<a href="#">Buy now</a>
12	<a href="#">66M1364600</a> Gasket, manifold 2	<a href="#">Buy now</a>
13	<a href="#">9321035M86</a> O-ring(6I2)	<a href="#">Buy now</a>
14	<a href="#">9310218M21</a> Oil seal (6g8)	<a href="#">Buy now</a>
15	<a href="#">9028003M01</a> Key woodruff 146115450000	<a href="#">Buy now</a>

## Repair Kit 1



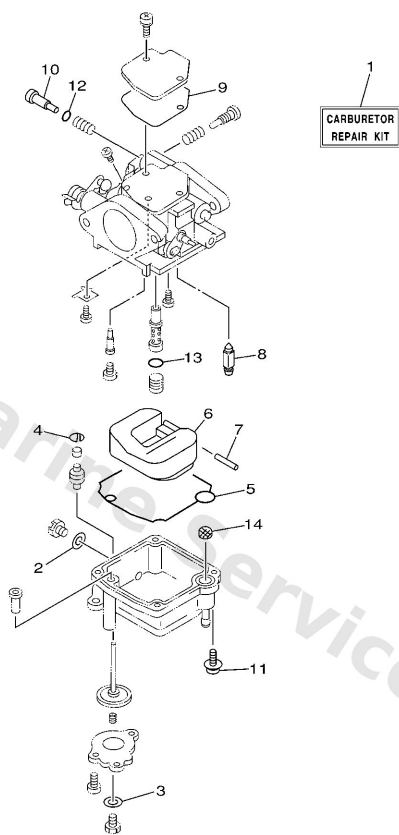
  
6D41200-C280

**B2**

Ref	Part	
16	<a href="#">66M1332910</a> Gasket, pump cover	<a href="#">Buy now</a>
17	<a href="#">9321020M65</a> O-ring	<a href="#">Buy now</a>



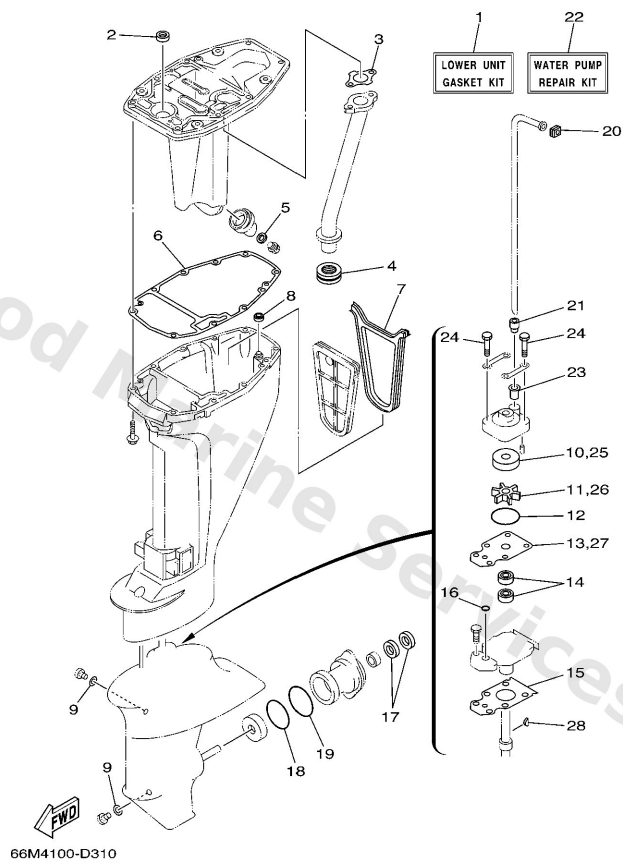
## Repair Kit 2



**B3**

Ref	Part	
1	<a href="#">66MW009301</a> Carburetor repair kit	<a href="#">Buy now</a>
2	<a href="#">66M1439800</a> Gasket	<a href="#">Buy now</a>
3	<a href="#">6L21439800</a> Gasket	<a href="#">Buy now</a>
4	<a href="#">66M1437700</a> Stopper	<a href="#">Buy now</a>
5	<a href="#">66M1438400</a> Gasket, float chamber	<a href="#">Buy now</a>
6	<a href="#">6L21438500</a> Float	<a href="#">Buy now</a>
7	<a href="#">6E51438601</a> Pin, float	<a href="#">Buy now</a>
8	<a href="#">6L21439200</a> Valve, needle	<a href="#">Buy now</a>
9	<a href="#">62Y1439900</a> Gasket	<a href="#">Buy now</a>
10	<a href="#">5H01432300</a> Pilot screw set	<a href="#">Buy now</a>
11	<a href="#">9798004112</a> Screw, pan head (686)	<a href="#">Buy now</a>
12	<a href="#">62Y1439700</a> O-ring	<a href="#">Buy now</a>
13	<a href="#">6F51439700</a> O-ring	<a href="#">Buy now</a>
14	<a href="#">66M1482700</a> Filter	<a href="#">Buy now</a>

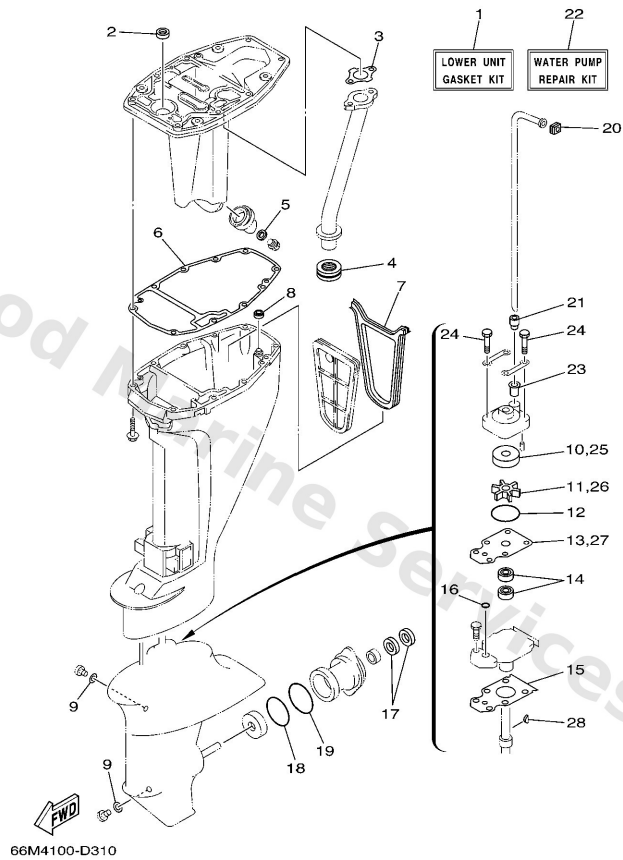
## Repair Kit 3



**B4**

Ref	Part	
1	<a href="#">66MW000121</a> Lower unit gasket kit	<a href="#">Buy now</a>
2	<a href="#">9310112M63</a> Oil seal	<a href="#">Buy now</a>
3	<a href="#">66M4113301</a> Gasket, exhaust manifold 1	<a href="#">Buy now</a>
4	<a href="#">6D44113800</a> Seal, ext. 1	<a href="#">Buy now</a>
5	<a href="#">9043014M09</a> Gasket	<a href="#">Buy now</a>
6	<a href="#">66M4511300</a> Gasket, upper casing	<a href="#">Buy now</a>
7	<a href="#">66M4511500</a> Gasket, upper casing	<a href="#">Buy now</a>
8	<a href="#">66M4512800</a> Seal 2	<a href="#">Buy now</a>
9	<a href="#">9043008020</a> Gasket	<a href="#">Buy now</a>
10	<a href="#">63V4432200</a> Insert, cartridge	<a href="#">Buy now</a>
11	<a href="#">63V4435201</a> Impeller	<a href="#">Buy now</a>
12	<a href="#">9321044398</a> O-ring(55x)	<a href="#">Buy now</a>
13	<a href="#">63V4432300</a> Outer plate, cartridge	<a href="#">Buy now</a>
14	<a href="#">9310120001</a> Oil seal	<a href="#">Buy now</a>
15	<a href="#">63V45315A0</a> Packing, lower casing	<a href="#">Buy now</a>

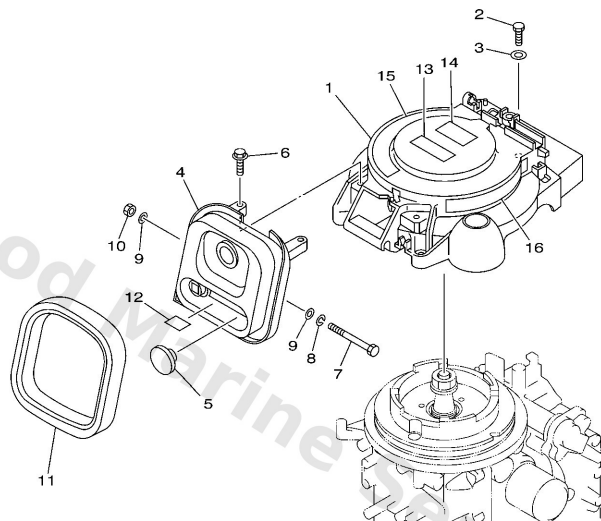
## Repair Kit 3



**B4**

Ref	Part	
16	<a href="#">9321006ME6</a> O-ring	<a href="#">Buy now</a>
17	<a href="#">9310117054</a> Oil seal (17x30x6-650)	<a href="#">Buy now</a>
18	<a href="#">9321057M09</a> O-ring (683)	<a href="#">Buy now</a>
19	<a href="#">9321056M80</a> O-ring(6j8)	<a href="#">Buy now</a>
20	<a href="#">63V4436510</a> Damper, water seal 1	<a href="#">Buy now</a>
21	<a href="#">63V4436800</a> Rubber, water seal 4	<a href="#">Buy now</a>
22	<a href="#">63VW007800</a> Water pump repair kit	<a href="#">Buy now</a>
23	<a href="#">6474436600</a> Damper, water seal 2	<a href="#">Buy now</a>
24	<a href="#">9708008045</a> Bolt, hexagon	<a href="#">Buy now</a>
28	<a href="#">6644433800</a> Key, woodruff	<a href="#">Buy now</a>

# Starter

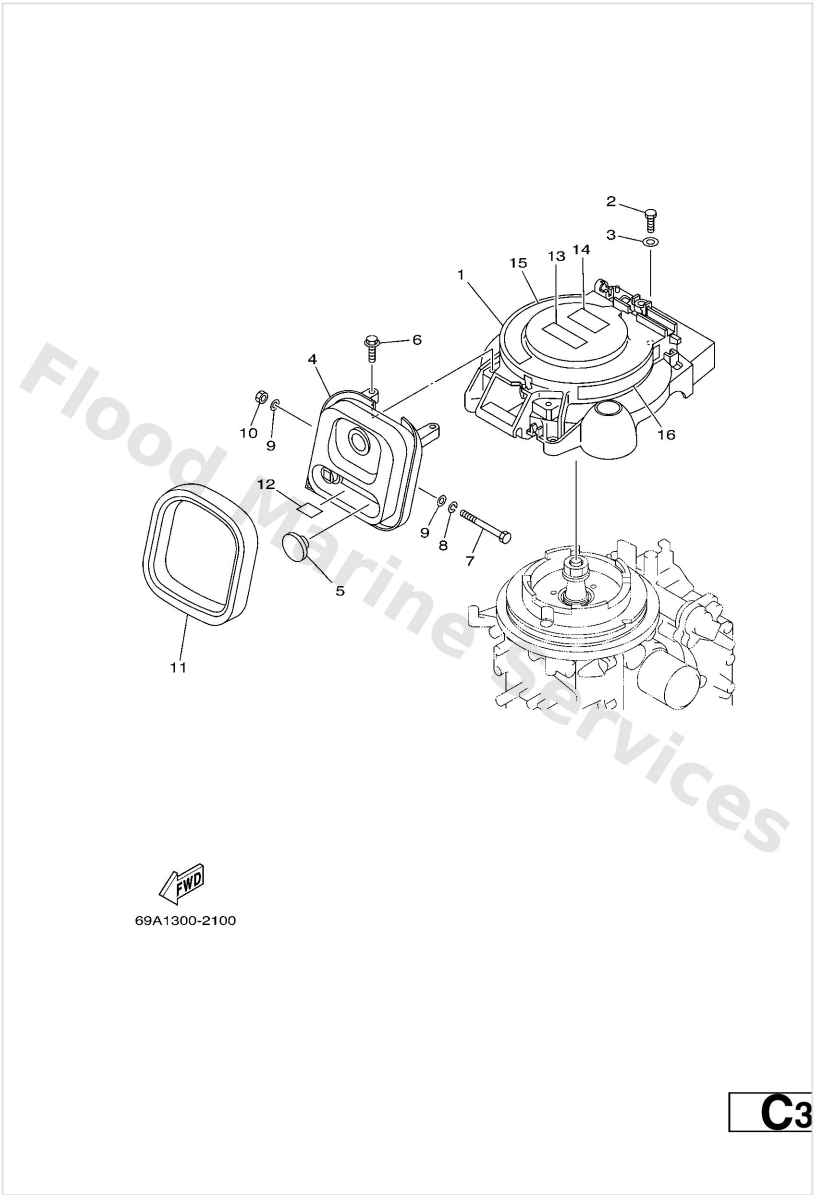


69A1300-2100

**C3**

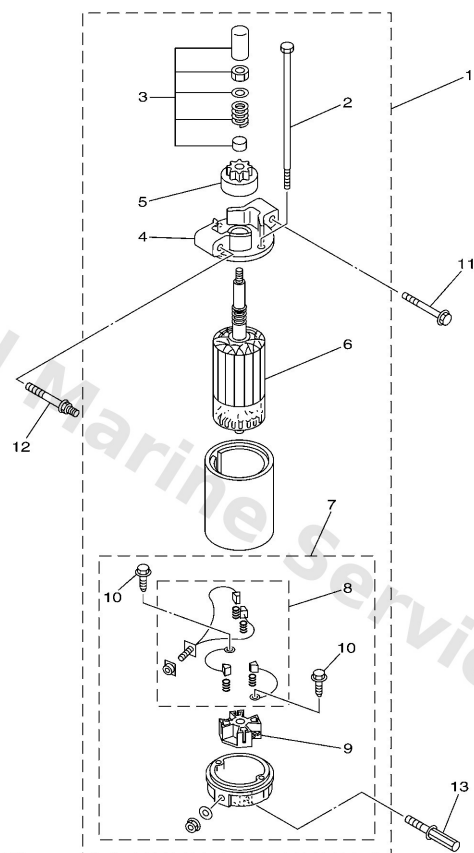
Ref	Part	
1	<a href="#">66M1571110</a> Case, starter	<a href="#">Buy now</a>
2	<a href="#">9709506020</a> Bolt(7u8)	<a href="#">Buy now</a>
3	<a href="#">9299506600</a> Washer, plain (646)	<a href="#">Buy now</a>
4	<a href="#">66M1575810</a> Guide, Rope	<a href="#">Buy now</a>
5	<a href="#">6G14272500</a> Grommet	<a href="#">Buy now</a>
6	<a href="#">9011906M59</a> Bolt, with washer	<a href="#">Buy now</a>
7	<a href="#">9709506090</a> Bolt(62y)	<a href="#">Buy now</a>
8	<a href="#">9299506100</a> Washer(6a1)	<a href="#">Buy now</a>
9	<a href="#">9020106M05</a> Washer, plate(6e3)	<a href="#">Buy now</a>
10	<a href="#">9538006700</a> Nut	<a href="#">Buy now</a>
11	<a href="#">66M1576200</a> Seal Rubber 2	<a href="#">Buy now</a>
12	<a href="#">66M8434200</a> Seat, Emblem	<a href="#">Buy now</a>
13	<a href="#">6A18362541</a> Mark 5	<a href="#">Buy now</a>
14	<a href="#">6A18362551</a> Mark 5	<a href="#">Buy now</a>
15	<a href="#">66M1442760</a> Label Instruction	<a href="#">Buy now</a>

Starter



Ref	Part	
16	<a href="#">6G81343765</a> Mark Caution	<a href="#">Buy now</a>

# Starting Motor

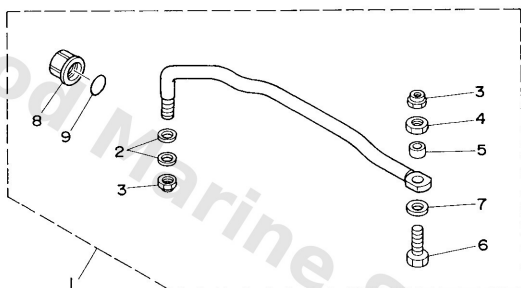


66M0010-0140

**D2**

Ref	Part	
1	<a href="#">66M8180001</a> Starting motor assembly	<a href="#">Buy now</a>
2	<a href="#">65W8182600</a> Bolt	<a href="#">Buy now</a>
3	<a href="#">65W8185701</a> Retainer	<a href="#">Buy now</a>
4	<a href="#">66M8183000</a> Front bracket assembly	<a href="#">Buy now</a>
5	<a href="#">65W8180700</a> Gear assembly, starting motor	<a href="#">Buy now</a>
6	<a href="#">65W8185001</a> Armature assembly	<a href="#">Buy now</a>
7	<a href="#">66M8182000</a> Rear bracket assembly	<a href="#">Buy now</a>
8	<a href="#">65W8180100</a> Brush set	<a href="#">Buy now</a>
9	<a href="#">65W8184000</a> Brush holder assembly	<a href="#">Buy now</a>
10	<a href="#">65W8182S00</a> Screw	<a href="#">Buy now</a>
11	<a href="#">9011908M39</a> Bolt, with washer	<a href="#">Buy now</a>
12	<a href="#">9010908M78</a> Bolt	<a href="#">Buy now</a>
13	<a href="#">9010908M85</a> Bolt	<a href="#">Buy now</a>

# Steering Guide

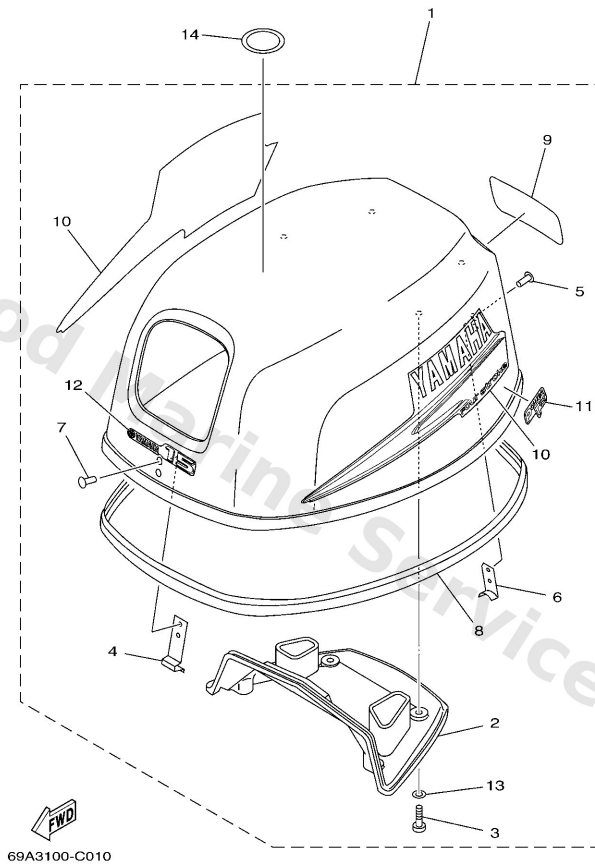


63V0100-5210

**A4**

Ref	Part	
1	<a href="#">63V6135000</a> Steering guide attachment kit AP	<a href="#">Buy now</a>
2	<a href="#">9020110M20</a> Washer, plate (663)	<a href="#">Buy now</a>
3	<a href="#">9018509M01</a> Nut, nylon (663)	<a href="#">Buy now</a>
4	<a href="#">9017009M03</a> Nut (689)	<a href="#">Buy now</a>
5	<a href="#">9038710M42</a> Coller (688)	<a href="#">Buy now</a>
6	<a href="#">6E56135500</a> Bolt	<a href="#">Buy now</a>
7	<a href="#">9020110M63</a> Washer, plate	<a href="#">Buy now</a>
8	<a href="#">6E54314501</a> Cap, clamp bracket	<a href="#">Buy now</a>
9	<a href="#">9321016275</a> O-ring	<a href="#">Buy now</a>

# Top Cowling

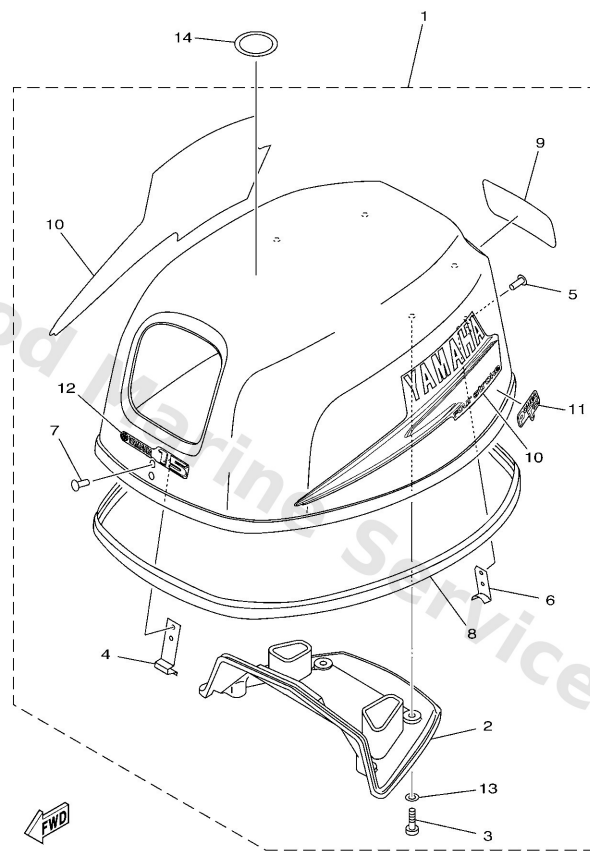


**A4**

Ref	Part	
1	<a href="#">69A42610124D</a> Top Cowling assembly	<a href="#">Buy now</a>
1	<a href="#">6P742610004D</a> Top Cowling assembly	<a href="#">Buy now</a>
2	<a href="#">66M4261300</a> Molding Air Duct	<a href="#">Buy now</a>
3	<a href="#">9778060520</a> Screw, tapping(6k8)	<a href="#">Buy now</a>
4	<a href="#">65W4265101</a> Hook	<a href="#">Buy now</a>
5	<a href="#">9026606M02</a> Rivet (697)	<a href="#">Buy now</a>
6	<a href="#">66M4265200</a> Hook	<a href="#">Buy now</a>
8	<a href="#">6D44261500</a> Seal	<a href="#">Buy now</a>
9	<a href="#">66M4267820</a> Graphic Front	<a href="#">Buy now</a>
9	<a href="#">69V4267820</a> Graphic Rear	<a href="#">Buy now</a>
10	<a href="#">66MW007020</a> Graphic set	<a href="#">Buy now</a>
11	<a href="#">69A4267500</a> Graphic, side 1	<a href="#">Buy now</a>
12	<a href="#">66M4267700</a> Graphic, front	<a href="#">Buy now</a>
12	<a href="#">69V4267700</a> Graphic Rear	<a href="#">Buy now</a>
13	<a href="#">9020205M38</a> Washer, plate(612)	<a href="#">Buy now</a>



# Top Cowling

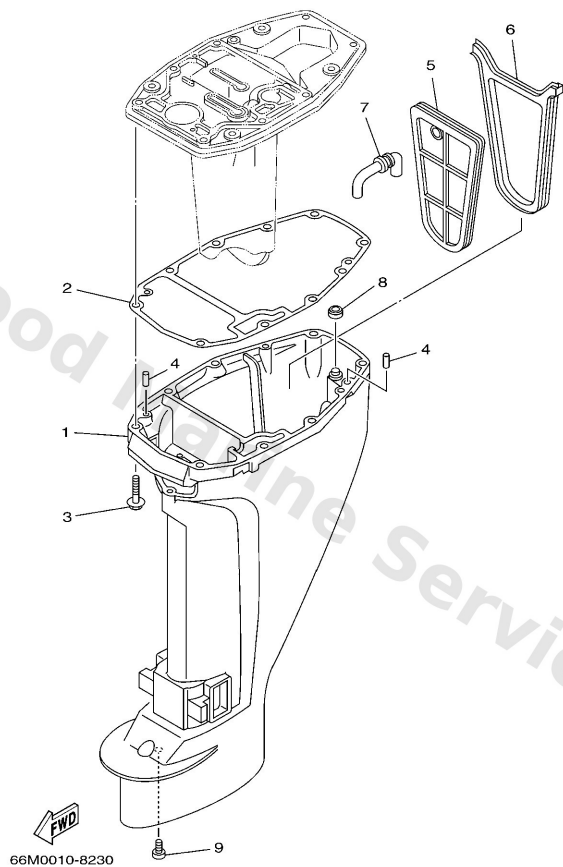


69A3100-C010

**A4**

Ref	Part	
14	<a href="#">67F1343403</a> □□□ , □□□□□	<a href="#">Buy now</a>

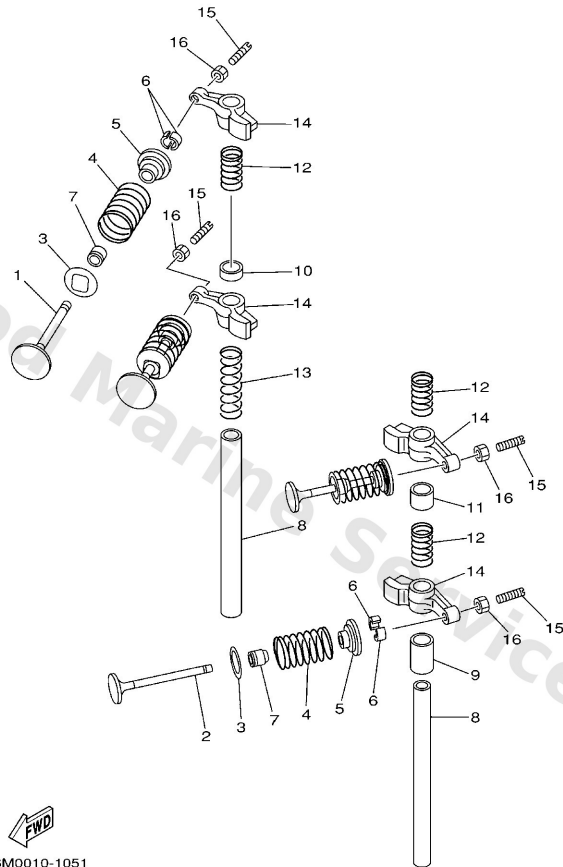
## Upper Casing



**E7**

Ref	Part	
1	<a href="#">66M45111004D</a> Casing, upper S (17.4")	<a href="#">Buy now</a>
1	<a href="#">66M45111104D</a> Casing, upper L (22.4")	<a href="#">Buy now</a>
2	<a href="#">66M4511300</a> Gasket, upper casing	<a href="#">Buy now</a>
3	<a href="#">9757508545</a> Bolt, hexagon w/w deep recess	<a href="#">Buy now</a>
4	<a href="#">9360612019</a> Pin, dowel (614)	<a href="#">Buy now</a>
5	<a href="#">66M4512600</a> Plate, Seal Damper	<a href="#">Buy now</a>
6	<a href="#">66M4511500</a> Gasket, upper casing	<a href="#">Buy now</a>
7	<a href="#">66M4513600</a> Pipe	<a href="#">Buy now</a>
8	<a href="#">66M4512800</a> Seal 2	<a href="#">Buy now</a>
9	<a href="#">9015706M06</a> Screw, pan head(6m7)	<a href="#">Buy now</a>

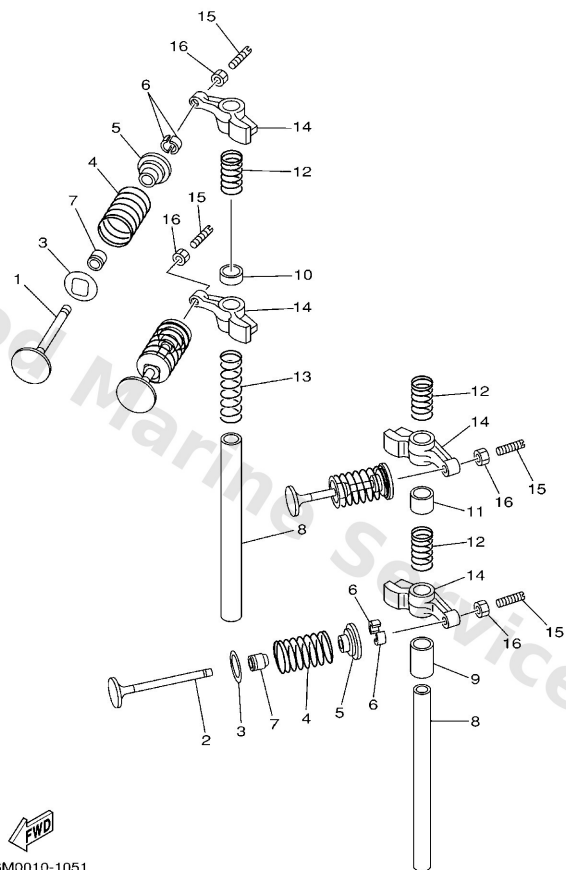
# Valve



**B2**

Ref	Part	
1	<a href="#">66M1211100</a> Valve, intake	<a href="#">Buy now</a>
2	<a href="#">66M1212100</a> Valve, exhaust	<a href="#">Buy now</a>
3	<a href="#">66M1211600</a> Seat, valve spring	<a href="#">Buy now</a>
4	<a href="#">66M1211300</a> Spring, valve inner	<a href="#">Buy now</a>
5	<a href="#">30X1211700</a> Retainer, valve spring	<a href="#">Buy now</a>
6	<a href="#">30X1211800</a> Cotter, valve	<a href="#">Buy now</a>
7	<a href="#">51Y1211900</a> Seal, valve stem	<a href="#">Buy now</a>
8	<a href="#">66M1214600</a> Shaft, rocker	<a href="#">Buy now</a>
9	<a href="#">9038713M56</a> Collar (6g8)	<a href="#">Buy now</a>
10	<a href="#">9038713001</a> Collar	<a href="#">Buy now</a>
11	<a href="#">9038713002</a> Collar	<a href="#">Buy now</a>
12	<a href="#">9050112M40</a> Spring, compression (6g8)	<a href="#">Buy now</a>
13	<a href="#">9050112M41</a> Spring Compression (6G8)	<a href="#">Buy now</a>
14	<a href="#">66M1215110</a> Arm, Valve Rocker	<a href="#">Buy now</a>
15	<a href="#">62Y1215900</a> Screw Valve Adjusting	<a href="#">Buy now</a>

# Valve



Ref	Part	
16	<a href="#">62Y1215800</a> Nut, lock	<a href="#">Buy now</a>

# Disclaimer

This document is provided for convenience only. It is **not** an official Yamaha publication and is **not supplied, endorsed, or approved** by Yamaha Motor Co., Ltd.

Reasonable efforts are made to keep information accurate; however diagrams, part references, supersessions, descriptions, and applicability may contain errors or omissions. Specifications and part availability may change without notice.

You are responsible for confirming the correct parts for your engine (including model code, year, serial range, and any superseded part numbers) before ordering or fitting.