



Yamaha F15AEP 2001

Parts Manual

www.floodmarine.co.uk

+44 2882 246 539

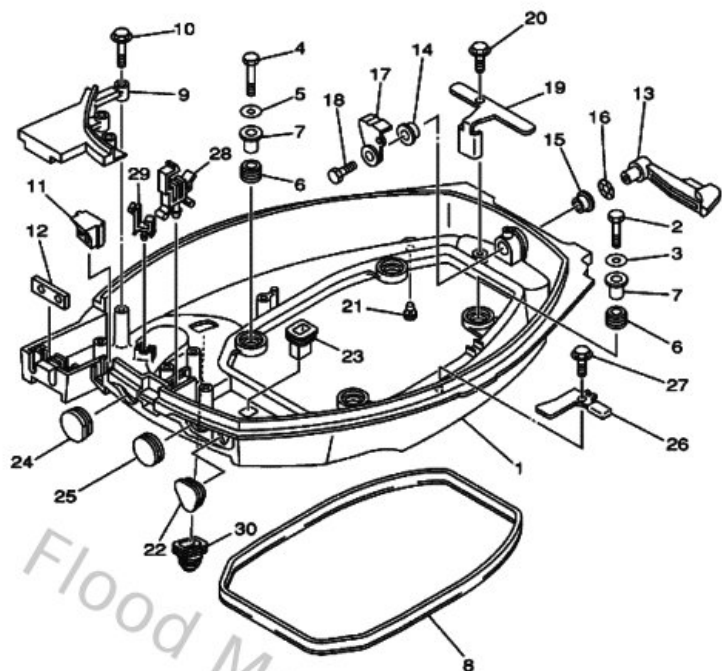
Authorised Yamaha Dealers



Contents

| | |
|-------------------------------------|----|
| Bottom Cowling | 3 |
| Bracket 1 | 5 |
| Bracket 2 | 8 |
| Carburetor | 10 |
| Control | 13 |
| Crankshaft & Piston | 16 |
| Cylinder & Crankcase | 17 |
| Cylinder & Crankcase 2 | 20 |
| Electrical 1 | 21 |
| Electrical 2 | 23 |
| Fuel | 26 |
| Fuel Tank | 28 |
| Generator | 29 |
| Intake | 30 |
| Lower Casing & Drive 1 | 32 |
| Lower Casing & Drive 2 | 36 |
| Oil Pan | 38 |
| Oil Pump | 40 |
| Power Trim & Tilt Assy 1 | 42 |
| Remote Control Assy 1 | 47 |
| Remote Control Box | 52 |
| Repair Kit 1 | 53 |
| Repair Kit 2 | 55 |
| Repair Kit 3 | 56 |
| Starter | 58 |
| Starting Motor | 59 |
| Steering Guide | 60 |
| Top Cowling | 61 |
| Upper Casing | 62 |
| Valve | 63 |

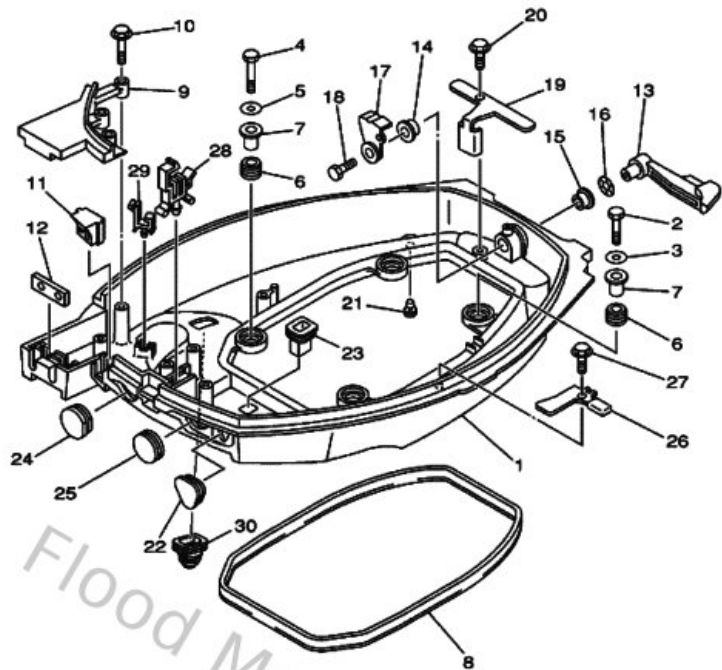
Bottom Cowling



69A0300-1150

| Ref | Part | |
|-----|---|-------------------------|
| 1 | 69A42710114D Bottom cowling assembly | Buy now |
| 2 | 970950603500 Bolt(j52) | Buy now |
| 3 | 929950660000 Washer, plain (646) | Buy now |
| 4 | 970950602500 Bolt | Buy now |
| 5 | 929900660000 Washer, plain (646) | Buy now |
| 6 | 9048015M3100 Grommet (6g1) | Buy now |
| 7 | 9038706M5200 Collar (6g1) | Buy now |
| 8 | 66M427160000 Rubber, seal 1 | Buy now |
| 9 | 66M42738004D Plate, fitting | Buy now |
| 10 | 9010906M8200 Bolt | Buy now |
| 11 | 66M427252000 Grommet | Buy now |
| 12 | 62Y427270000 Grommet | Buy now |
| 13 | 66M42815004D Lever, clamp 1 | Buy now |
| 14 | 9038612M3700 Bushing (6f5) | Buy now |
| 15 | 9038612MA200 Bush | Buy now |

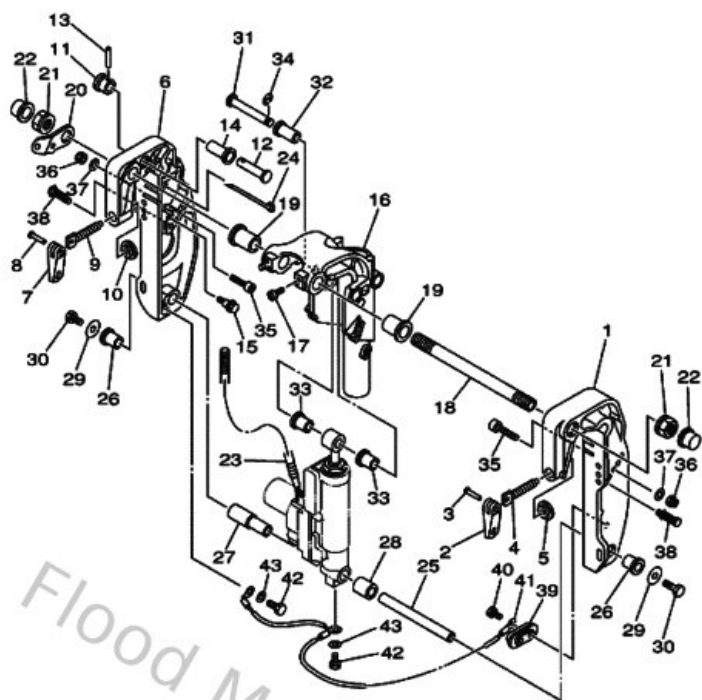
Bottom Cowling



FWD
69A0300-1150

| Ref | Part | |
|-----|--|-------------------------|
| 16 | 902061205200 Washer, wave (666) | Buy now |
| 17 | 6L2428160000 Lever, clamp | Buy now |
| 18 | 970950601200 Bolt(gh1) | Buy now |
| 19 | 66M427660000 Bracket 2 | Buy now |
| 20 | 9010906M8600 Bolt | Buy now |
| 21 | 6H3443910100 Nipple, hose | Buy now |
| 22 | 65W263261000 Grommet | Buy now |
| 23 | 682427270000 Grommet | Buy now |
| 24 | 682427240000 Grommet | Buy now |
| 25 | 65W427261000 Grommet | Buy now |
| 26 | 66M427430000 Bracket | Buy now |
| 28 | 9046525M9500 Clamp | Buy now |
| 29 | 9046409M1300 Clamp (6h1) | Buy now |
| 30 | 688427261000 Grommet | Buy now |

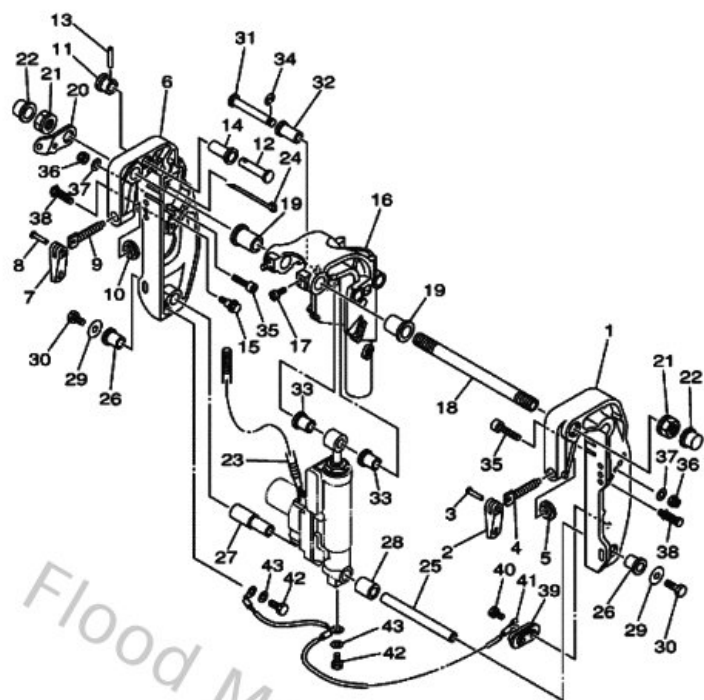
Bracket 1




69A0100-0210

| Ref | Part | |
|-----|--|-------------------------|
| 1 | 69A43111004D Bracket, clamp 1 | Buy now |
| 2 | 6E0431180100 Handle, transom clamp | Buy now |
| 3 | 9024304M0100 Pin(6a1) | Buy now |
| 4 | 9014914M0300 Screw(6j8) | Buy now |
| 5 | 648431140100 Pad, transom clamp | Buy now |
| 6 | 69A43112004D Bracket, clamp 2 | Buy now |
| 11 | 65W431920000 Knob, stopper | Buy now |
| 12 | 65W431910000 Shaft, stopper | Buy now |
| 13 | 916903001800 926-51502-00 pin, spring (700) | Buy now |
| 14 | 9038614MA100 Bush | Buy now |
| 15 | 9010906MA100 Bolt | Buy now |
| 16 | 69A43311004D Bracket, Swivel 1 | Buy now |
| 17 | 978850801000 Rivet | Buy now |
| 18 | 69A431310000 Bolt, clamp bracket | Buy now |
| 19 | 9038622MA400 Bush | Buy now |

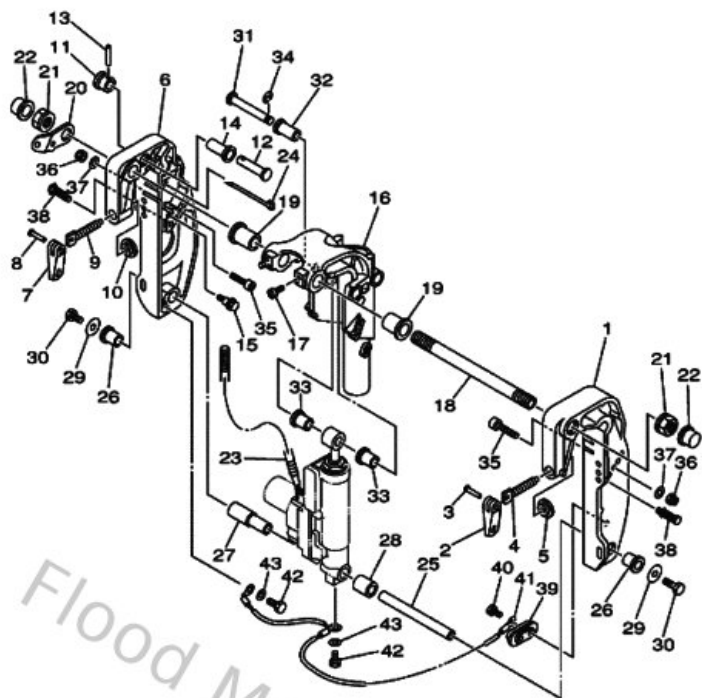
Bracket 1



FWD
69A0100-0210

| Ref | Part | |
|-----|--|-------------------------|
| 20 | 69A431130000 Plate, clamp bracket | Buy now |
| 21 | 63V431450000 Nut, self-locking | Buy now |
| 22 | 6G5431450000 Cap, clamp bracket | Buy now |
| 23 | 9044614MH700 Hose | Buy now |
| 24 | 9046513M9700 Clamp | Buy now |
| 25 | 69A438180000 Pin, lower shock mount | Buy now |
| 26 | 9038616MA700 Bush | Buy now |
| 27 | 9038616MA800 Bush | Buy now |
| 28 | 9038716M0200 Collar | Buy now |
| 29 | 9020108M0000 Washer, plate(6e0) | Buy now |
| 30 | 970800801600 Bolt | Buy now |
| 31 | 9024912M3600 Pin | Buy now |
| 32 | 9038112M1000 Bush, solid | Buy now |
| 33 | 9038112M1100 Bush, solid | Buy now |
| 34 | 9343010M0000 Circlip | Buy now |

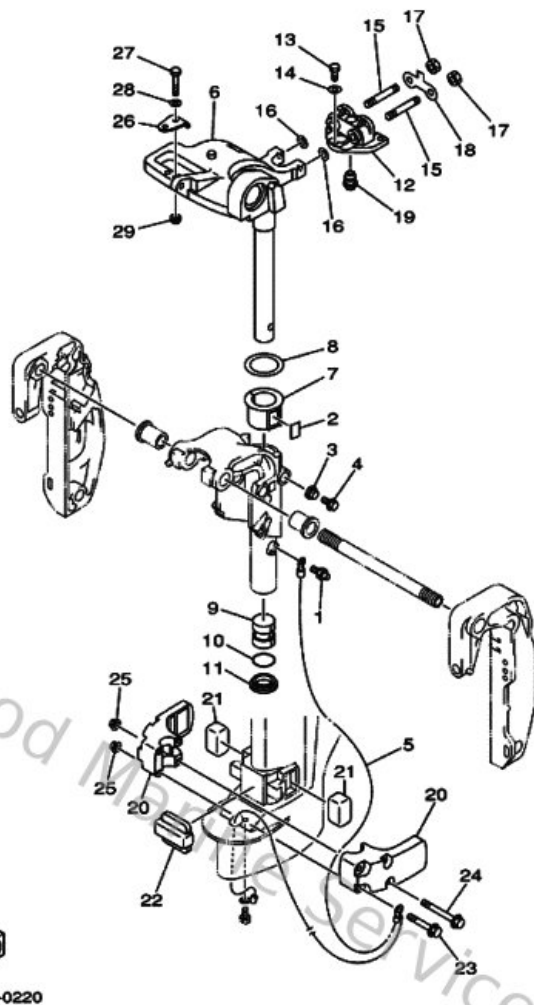
Bracket 1




69A0100-0210

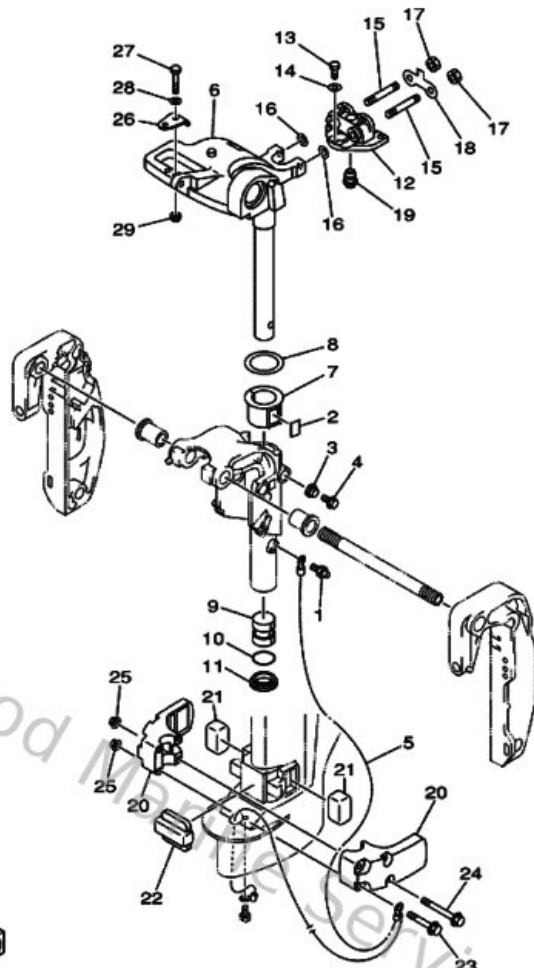
| Ref | Part | |
|-----|---|-------------------------|
| 35 | 9011008M0500 Bolt, hexagon socket head | Buy now |
| 36 | 901850805700 Nut, nylon (6j8) | Buy now |
| 37 | 929900860000 Washer, plain (663) | Buy now |
| 38 | 9033808M1900 Plug | Buy now |
| 39 | 65W452510000 Anode | Buy now |
| 40 | 901010602000 Bolt | Buy now |
| 41 | 63V821270000 Wire, lead 2 | Buy now |
| 42 | 970950601000 Bolt | Buy now |
| 43 | 929950660000 Washer, plain (646) | Buy now |

Bracket 2



| Ref | Part | |
|-----|--|-------------------------|
| 1 | 9370006M0300 Nipple, grease(6a1) | Buy now |
| 2 | 63V425280000 Plate, friction | Buy now |
| 3 | 689433730100 Seal, damper | Buy now |
| 4 | 9010506M0700 Bolt (689) | Buy now |
| 5 | 69A821270100 Wire Lead 2 | Buy now |
| 6 | 66M42511014D Bracket Steering | Buy now |
| 7 | 63V425370000 Bushing, pivot shaft | Buy now |
| 8 | 9020145M2800 Washer, plate | Buy now |
| 9 | 903863004800 Bush | Buy now |
| 10 | 9321029M9400 O-ring(6h1) | Buy now |
| 11 | 9038630M6000 Bush(6j8) | Buy now |
| 12 | 66M44514004D Mount damper, upper side | Buy now |
| 13 | 970750602500 Bolt | Buy now |
| 14 | 929950660000 Washer, plain (646) | Buy now |
| 15 | 9011608M5400 Bolt, stud(63v) | Buy now |

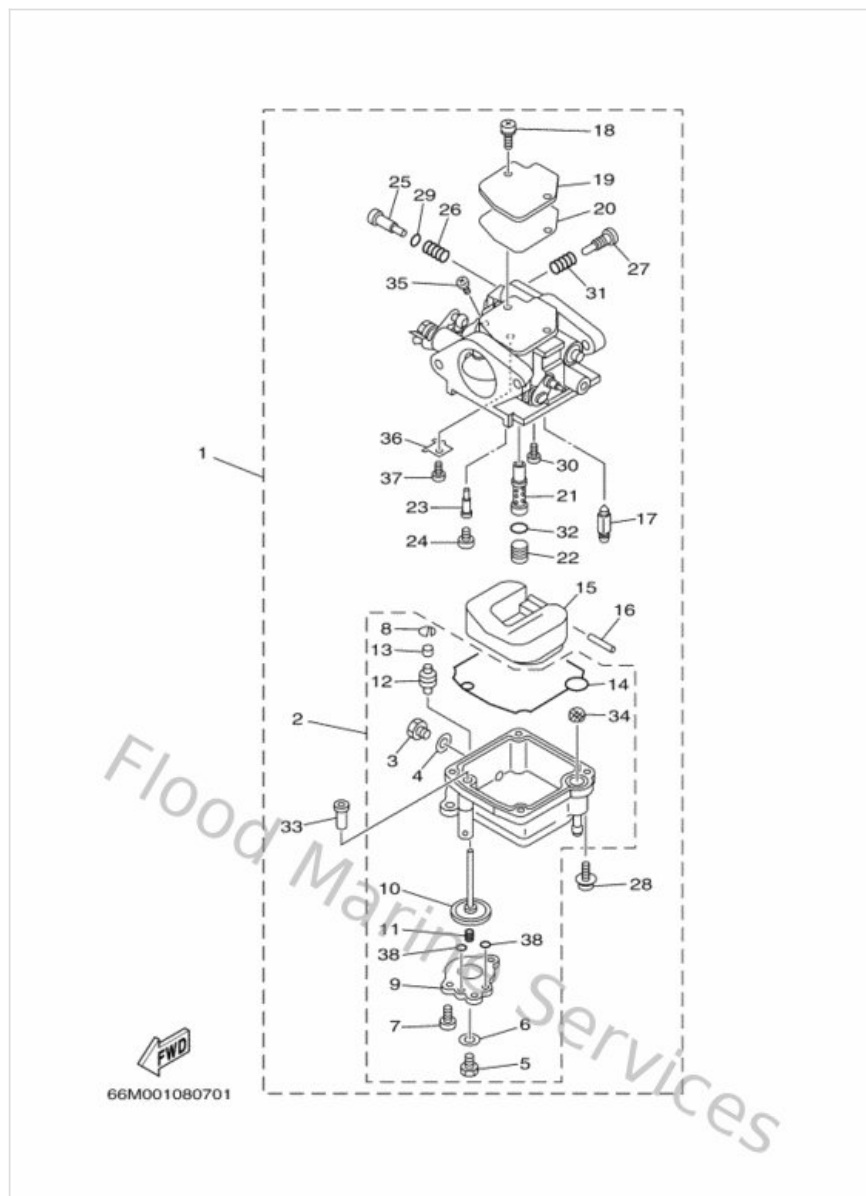
Bracket 2



69A0100-0220

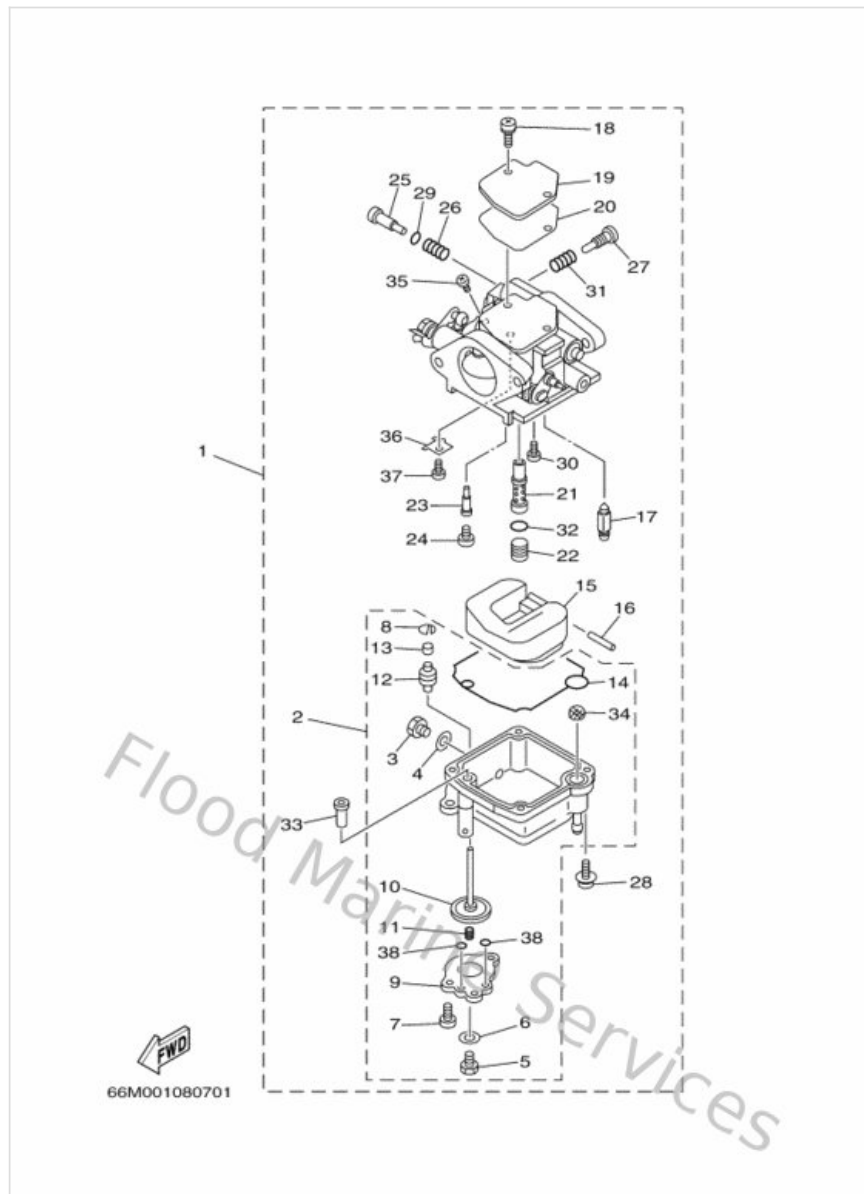
| Ref | Part | |
|-----|---|-------------------------|
| 16 | 9020108M0600 Washer, plate | Buy now |
| 17 | 953800860000 Nut (661) | Buy now |
| 18 | 66M445260000 Plate | Buy now |
| 19 | 66M443660000 Damper, water seal | Buy now |
| 20 | 66M44551004D Housing, lower mount rubber 1 | Buy now |
| 21 | 682445553000 Mount damper, lower side | Buy now |
| 22 | 66M445570000 Mount damper, lower front | Buy now |
| 23 | 9011908M4500 Bolt, with washer | Buy now |
| 24 | 9011908M4600 Bolt, with washer | Buy now |
| 25 | 9017908M3400 Nut | Buy now |
| 26 | 63V485110100 Hook, steering | Buy now |
| 27 | 970750803500 Bolt(70w) | Buy now |
| 28 | 929950860000 Washer, plain (663) | Buy now |
| 29 | 901850805700 Nut, nylon (6j8) | Buy now |

Carburetor



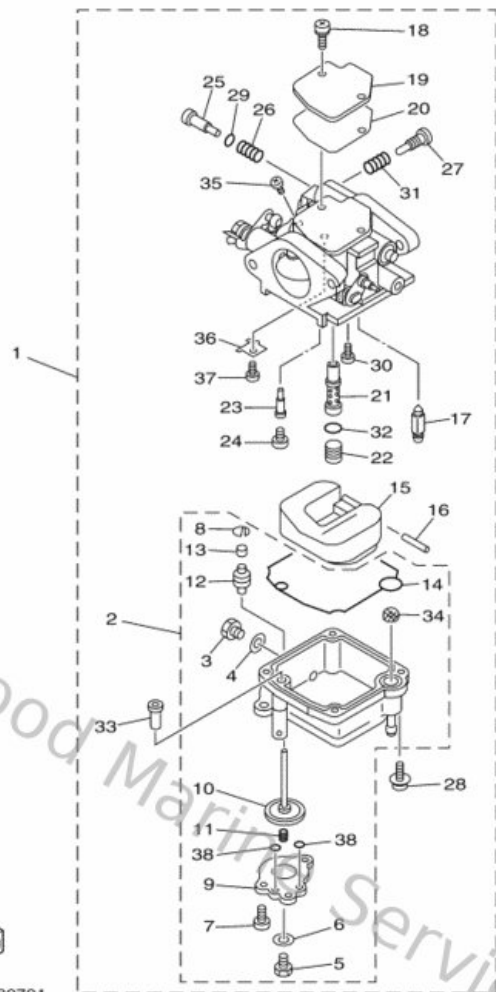
| Ref | Part | |
|-----|---|-------------------------|
| 1 | 66M143010000 Carburetor assembly 1 | Buy now |
| 2 | 66M143810200 Body Float Chamber | Buy now |
| 3 | 62Y143830000 Screw, drain | Buy now |
| 4 | 66M143980000 Gasket | Buy now |
| 5 | 677143830100 Screw, drain | Buy now |
| 6 | 6L2143980000 Gasket | Buy now |
| 7 | 66M143250000 Screw, pan head | Buy now |
| 8 | 66M143770000 Stopper | Buy now |
| 9 | 66M149580000 Cover, diaphragm | Buy now |
| 10 | 66M143680100 Diaphragm assembly 1 | Buy now |
| 11 | 6G8142750200 Spring | Buy now |
| 12 | 66M142390000 Seal | Buy now |
| 13 | 66M142250000 Cap | Buy now |
| 14 | 66M143840000 Gasket, float chamber | Buy now |
| 15 | 6L2143850000 Float | Buy now |

Carburetor



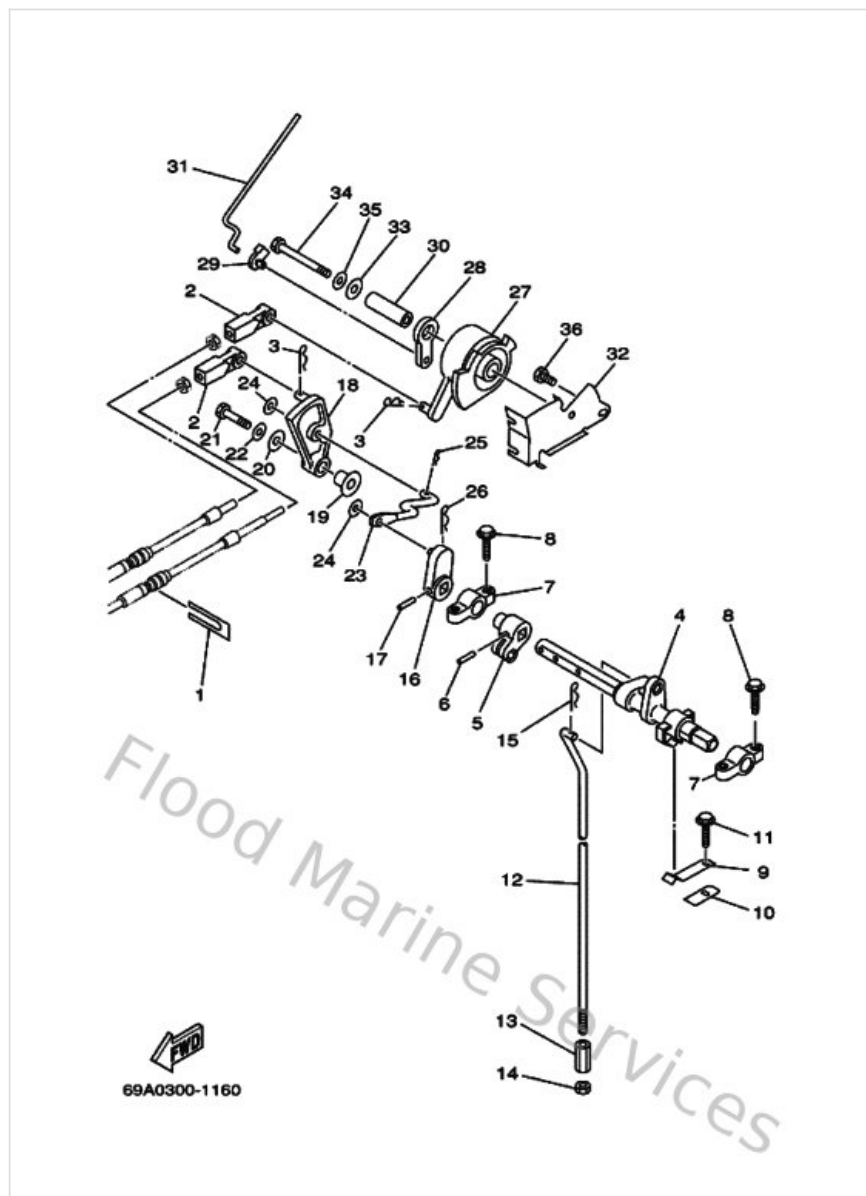
| Ref | Part | |
|-----|---|-------------------------|
| 16 | 6E5143860100 Pin, float | Buy now |
| 17 | 6L2143920000 Valve, needle | Buy now |
| 18 | 979800411000 Screw, pan head (e56) | Buy now |
| 19 | 6L2141570000 Cover, mixing | Buy now |
| 20 | 62Y143990000 Gasket | Buy now |
| 21 | 66M143410000 Nozzle Main | Buy now |
| 22 | 66M143435200 Jet, main (#104) | Buy now |
| 23 | 66M143422300 Jet, pilot (#45) | Buy now |
| 24 | 66M143550000 Plug | Buy now |
| 25 | 5H0143230000 Pilot screw set | Buy now |
| 26 | 30X143340000 Spring, air adjusting | Buy now |
| 27 | 62Y143210000 Screw, throttle | Buy now |
| 28 | 979800411200 Screw, pan head (686) | Buy now |
| 29 | 5H0143970000 O-ring | Buy now |
| 30 | 989800400600 Screw, bind(612) | Buy now |

Carburetor



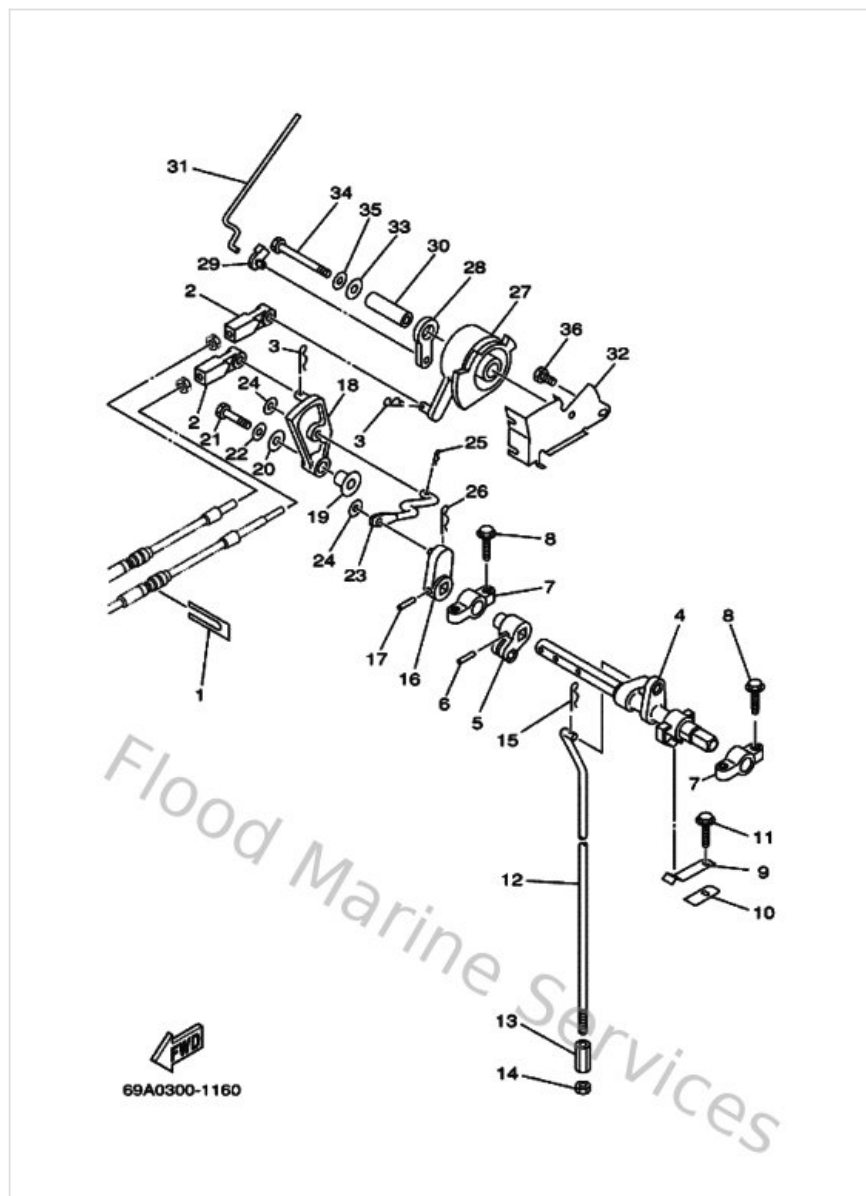
| Ref | Part | |
|-----|---|-------------------------|
| 31 | 646142120100 Spring, pilot adjusting | Buy now |
| 32 | 6F5143970000 O-ring | Buy now |
| 33 | 66M142720000 Valve, check seat | Buy now |
| 34 | 66M148270000 Filter | Buy now |
| 36 | 66M141570000 Cover Mixing | Buy now |
| 37 | 985800300500 Screw, pan head(78g) | Buy now |
| 38 | 69M245330000 O-ring | Buy now |

Control



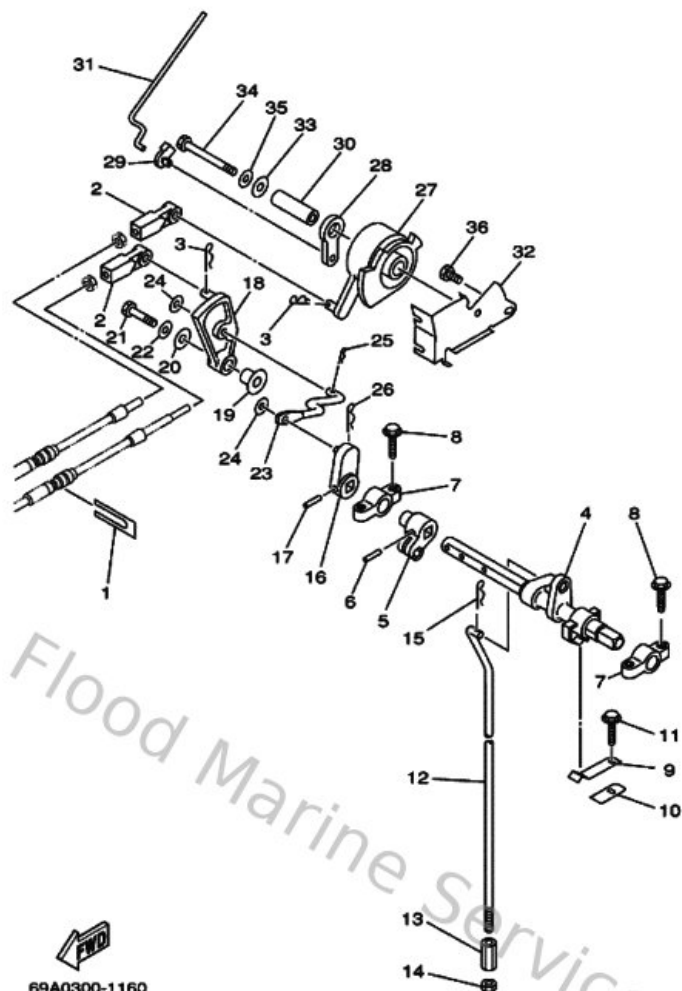
| Ref | Part | |
|-----|---|-------------------------|
| 1 | 6H3485380000 Clamp, cable | Buy now |
| 2 | 663483440000 Cable end, remote control | Buy now |
| 3 | 904681800800 Clip 620436610000 | Buy now |
| 4 | 65W441210000 Lever, shift rod | Buy now |
| 5 | 66M441220000 Bushing, shift rod lever | Buy now |
| 6 | 9025403M0500 Pin, spring | Buy now |
| 7 | 6F5416620000 Bracket 2 | Buy now |
| 8 | 9010906M8100 Bolt | Buy now |
| 9 | 65W441160000 Spring | Buy now |
| 10 | 66R441140000 Stopper | Buy now |
| 11 | 9010906M8600 Bolt | Buy now |
| 12 | 66M441430000 Rod, shift | Buy now |
| 13 | 901700601500 Connector, shift rod | Buy now |
| 14 | 9538R0670000 Nut | Buy now |
| 16 | 65W441420000 Joint | Buy now |

Control



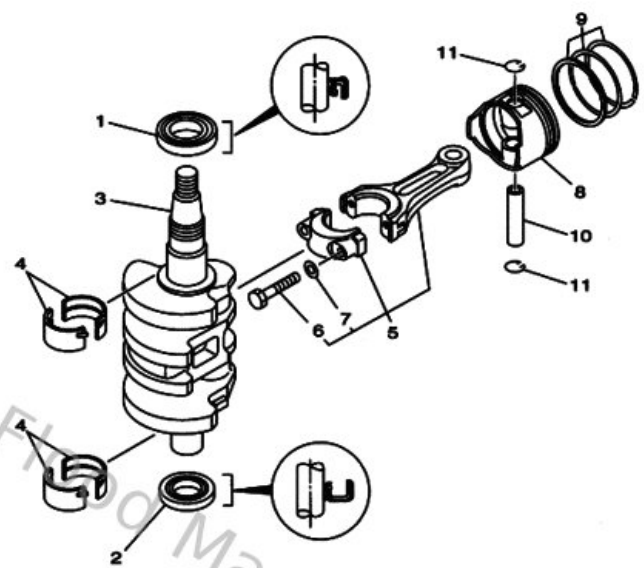
| Ref | Part | |
|-----|---|-------------------------|
| 18 | 65W441250000 Lever, shift rod | Buy now |
| 19 | 9038706M2900 Collar (6a0) | Buy now |
| 20 | 9020106M3100 Washer (6a0) | Buy now |
| 21 | 970950602500 Bolt | Buy now |
| 22 | 929950660000 Washer, plain (646) | Buy now |
| 23 | 66M441920000 Joint, rod 1 | Buy now |
| 24 | 9020105M0600 Washer, plate(61u) | Buy now |
| 25 | 904681000500 Pin, hair 6264123500 | Buy now |
| 27 | 65W416380000 Pulley | Buy now |
| 28 | 65W412830000 Lever, free accel. | Buy now |
| 29 | 661412620200 Joint, choke lever | Buy now |
| 30 | 903870606400 Collar | Buy now |
| 31 | 66M412110000 Link, accel. | Buy now |
| 32 | 65W144970100 Stay, Throttle Wire | Buy now |
| 34 | 975950655500 Bolt, hexagon w/w deep recess | Buy now |

Control



| Ref | Part | |
|-----|--------------------------------------|-------------------------|
| 36 | 970950601000 Bolt | Buy now |

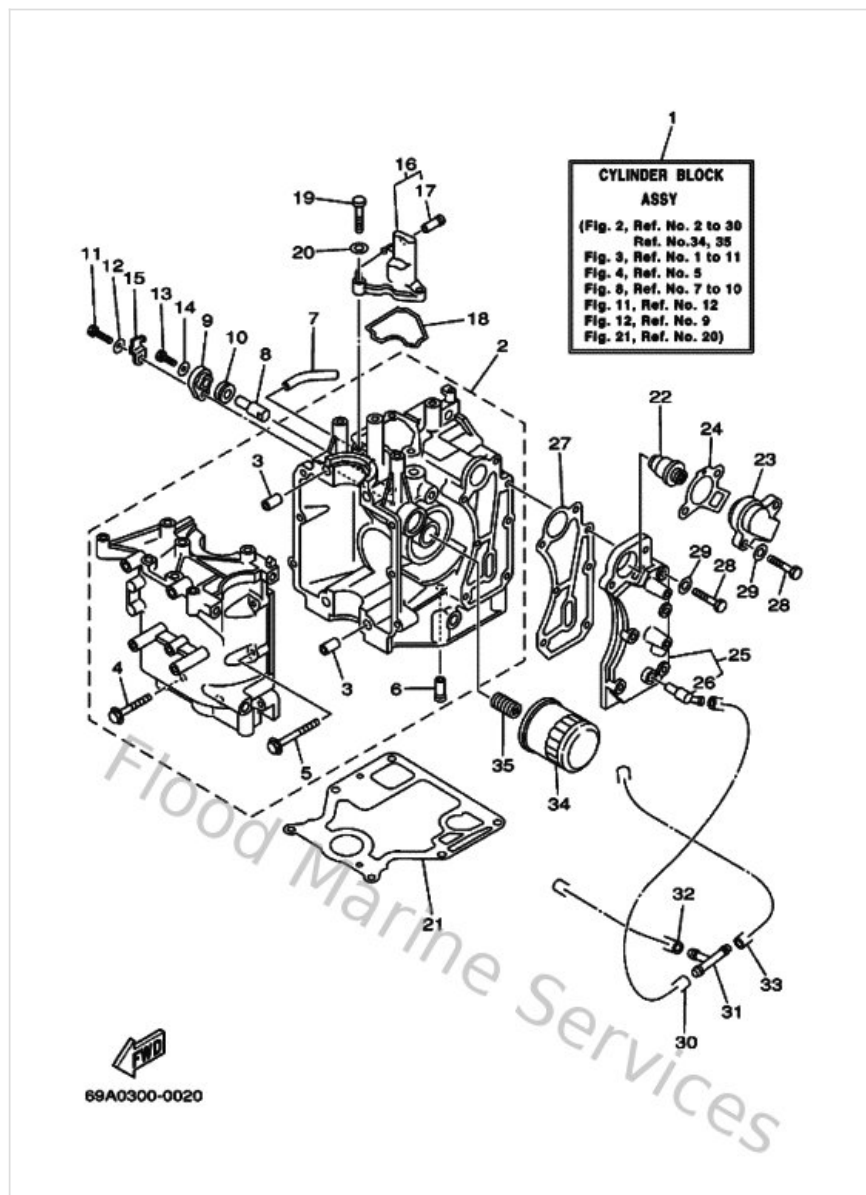
Crankshaft & Piston



66M0010-8030

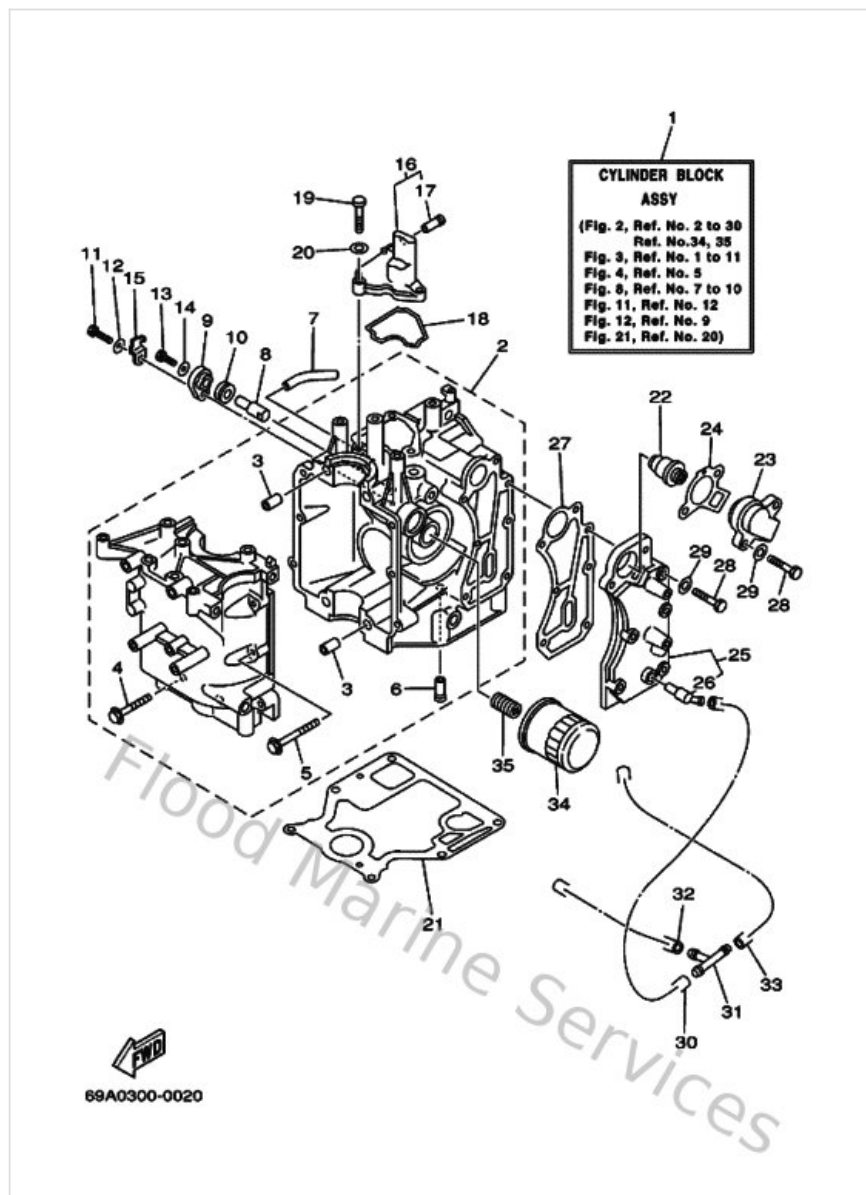
| Ref | Part | |
|-----|---|-------------------------|
| 1 | 9310235M5100 Oil seal | Buy now |
| 2 | 9310225M5200 Oil seal | Buy now |
| 3 | 66M114110000 Crankshaft | Buy now |
| 4 | 66M114162000 Plane bearing, crankshaft 1 | Buy now |
| 5 | 66M116500000 Connecting rod kit | Buy now |
| 6 | 66M116540000 Bolt, connecting rod | Buy now |
| 7 | 9020107M0100 Washer, plate | Buy now |
| 8 | 66M116360000 Piston (0.50Mm O/S) | Buy now |
| 9 | 66M116030000 Piston ring set (std) | Buy now |
| 10 | 634116330000 Pin, piston | Buy now |
| 11 | 934501502300 Circlip 131116340000 | Buy now |

Cylinder & Crankcase



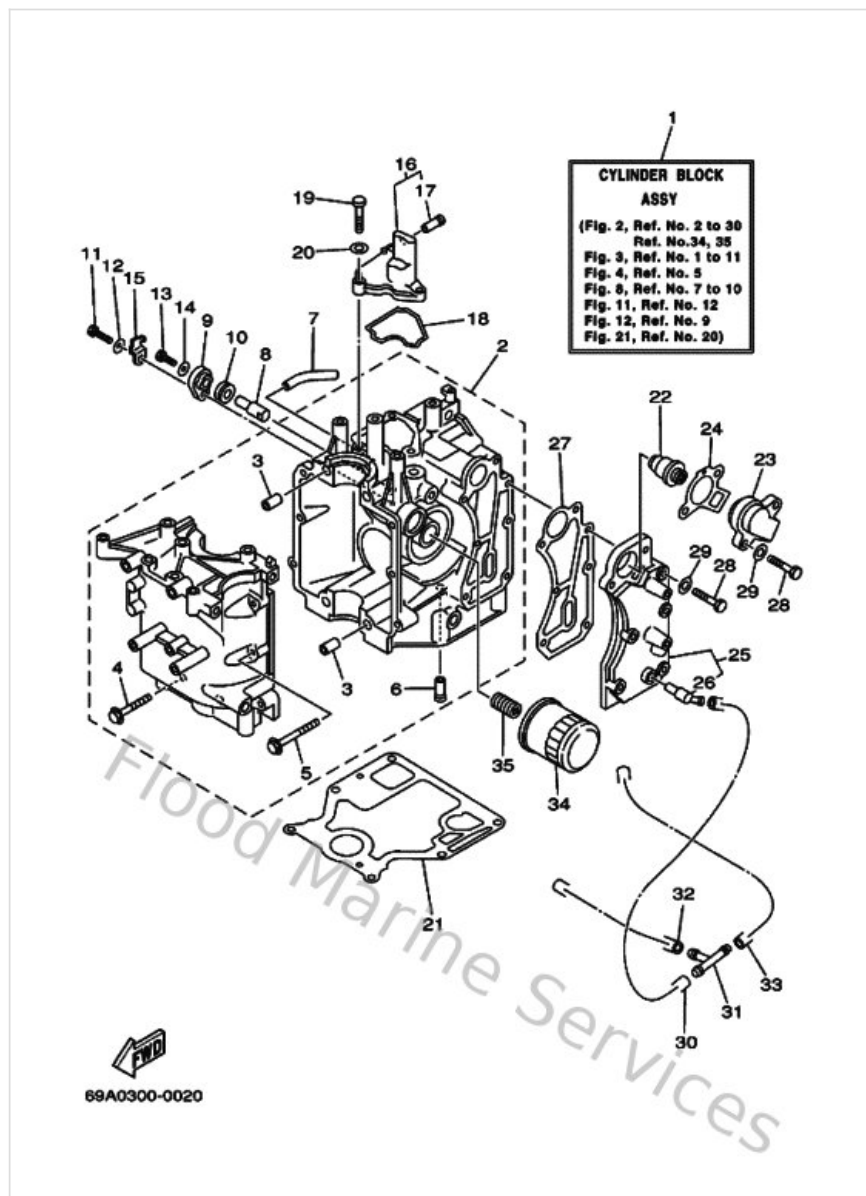
| Ref | Part | |
|-----|--|-------------------------|
| 1 | 66MW009B021S Cylinder Block assembly (With Reli | Buy now |
| 2 | 66M15100011S Crankcase assembly | Buy now |
| 3 | 995101011400 Pin, dowel(3vd) | Buy now |
| 4 | 9011908M6600 Bolt, with washer | Buy now |
| 5 | 9011906M1400 Bolt, with washer (677) | Buy now |
| 6 | 6E5243770000 Pipe, joint | Buy now |
| 7 | 9044510M4600 Hose (I200) | Buy now |
| 8 | 66M113250000 Anode | Buy now |
| 9 | 66M113270094 Cover, anode | Buy now |
| 10 | 66M113280000 Grommet, anode | Buy now |
| 11 | 970950602000 Bolt(7u8) | Buy now |
| 12 | 929950660000 Washer, plain (646) | Buy now |
| 13 | 970950501200 Bolt, hexagon | Buy now |
| 14 | 929950560000 Washer, plain (646) | Buy now |
| 15 | 66M125350000 Plate | Buy now |

Cylinder & Crankcase



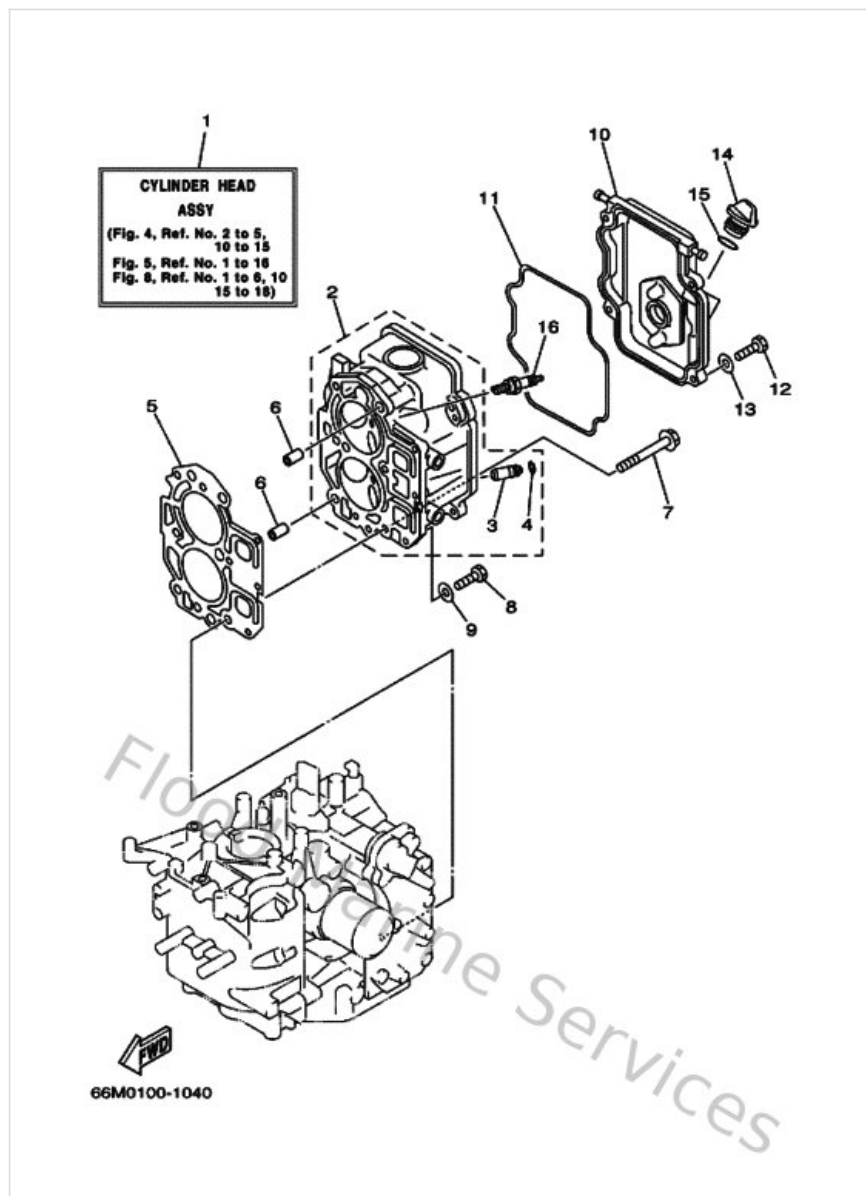
| Ref | Part | |
|-----|---|-------------------------|
| 16 | 66M11168001S Cover Breather | Buy now |
| 18 | 66M113570000 Seal, cylinder 3 | Buy now |
| 20 | 929900660000 Washer, plain (646) | Buy now |
| 21 | 66M113510000 Gasket, cylinder | Buy now |
| 22 | 66M124110000 Thermostat | Buy now |
| 23 | 6H312413001S Cover, thermostat | Buy now |
| 24 | 62Y124140000 Gasket, cover | Buy now |
| 25 | 66M41113201S Outer Cover Exhaust | Buy now |
| 26 | 676113720000 Nipple, hose | Buy now |
| 27 | 66M411140000 Gasket, exhaust outer cover | Buy now |
| 28 | 970130603000 Bolt | Buy now |
| 30 | 904450906100 Hose (L65) | Buy now |
| 31 | 688243780000 Pipe, joint | Buy now |
| 32 | 90445092K100 Hose (I420) | Buy now |
| 33 | 904450910500 Hose (I420) | Buy now |

Cylinder & Crankcase



| Ref | Part | |
|-----|---|-------------------------|
| 34 | 5GH134400000 Element assembly, oil cleaner | Buy now |
| 35 | 9040120M0000 Bolt, union(62y) | Buy now |

Cylinder & Crankcase 2



| Ref | Part | |
|-----|---|-------------------------|
| 1 | 66MW009A011S Cylinder Head Complete | Buy now |
| 2 | 66M11111011S Head, cylinder 1 | Buy now |
| 3 | 66M111331000 Guide Valve 1 | Buy now |
| 4 | 9345009M0100 Circlip (6g8) | Buy now |
| 5 | 66M111811000 Gasket, cylinder head 1 | Buy now |
| 6 | 995101011400 Pin, dowel(3vd) | Buy now |
| 7 | 9010508M7800 Bolt, washer based | Buy now |
| 8 | 970130602500 Bolt(62y) | Buy now |
| 9 | 929900660000 Washer, plain (646) | Buy now |
| 10 | 66M11191001S Cover Cylinder Head 1 | Buy now |
| 11 | 66M113560000 Seal, cylinder 2 | Buy now |
| 12 | 970950602000 Bolt(7u8) | Buy now |
| 14 | 6G8153630000 Plug, oil | Buy now |
| 15 | 9321024M7900 O-ring | Buy now |
| 16 | 947010037500 Plug, spark (dpr6ea-9)(62y) | Buy now |

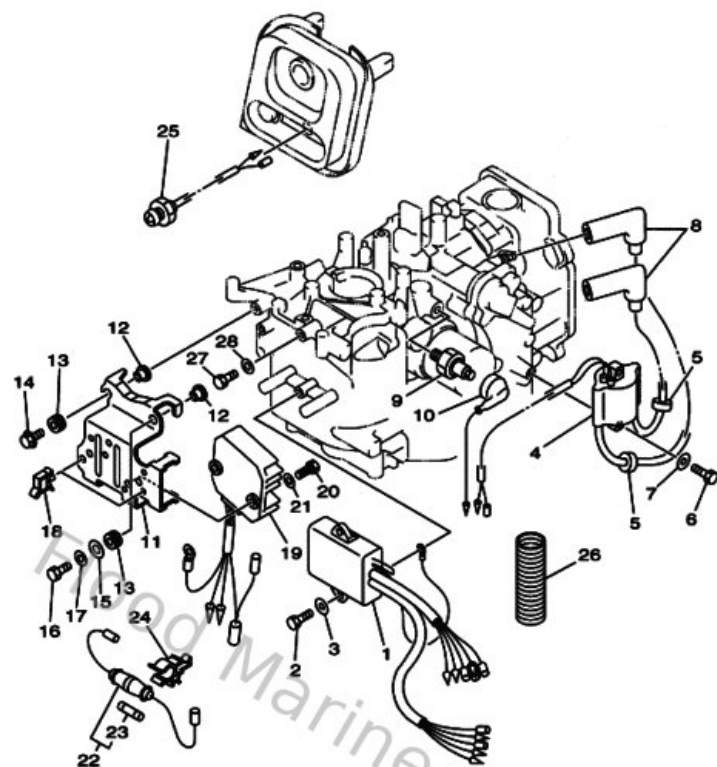
Electrical 1



This diagram illustrates the engine wiring harness assembly. It shows a central control unit with multiple wires extending from it. The wires are labeled with numbers: 1, 2, 3, 19, and 26. Wire 1 is a thick cable that branches into several thinner wires. Wire 2 is a single wire, and wire 3 is a small component. Wire 19 is a bundle of wires. Wire 26 is a thick, braided cable. The diagram also shows a battery symbol and a ground symbol.

| Ref | Part | |
|-----|--|-------------------------|
| 1 | 66M855400100 C.d.i. Unit assembly | Buy now |
| 2 | 970950602000 Bolt(7u8) | Buy now |
| 3 | 929950660000 Washer, plain (646) | Buy now |
| 4 | 66M855700000 Ignition coil assembly | Buy now |
| 5 | 904802516100 Grommet(656) | Buy now |
| 7 | 929900660000 Washer, plain (646) | Buy now |
| 8 | 6G8823703000 Plug cap assembly | Buy now |
| 9 | 62Y825041000 Oil pressure switch assembly | Buy now |
| 10 | 66M821271000 Wire, lead 2 | Buy now |
| 11 | 69A855421000 Bracket | Buy now |
| 12 | 9038706M0500 Collar(6h4) | Buy now |
| 13 | 9048013M2400 Grommet (6e9) | Buy now |
| 14 | 958950602000 Bolt, flange(jk3) | Buy now |
| 15 | 9020106M0800 Washer, plate(6e3) | Buy now |
| 16 | 970950602500 Bolt | Buy now |

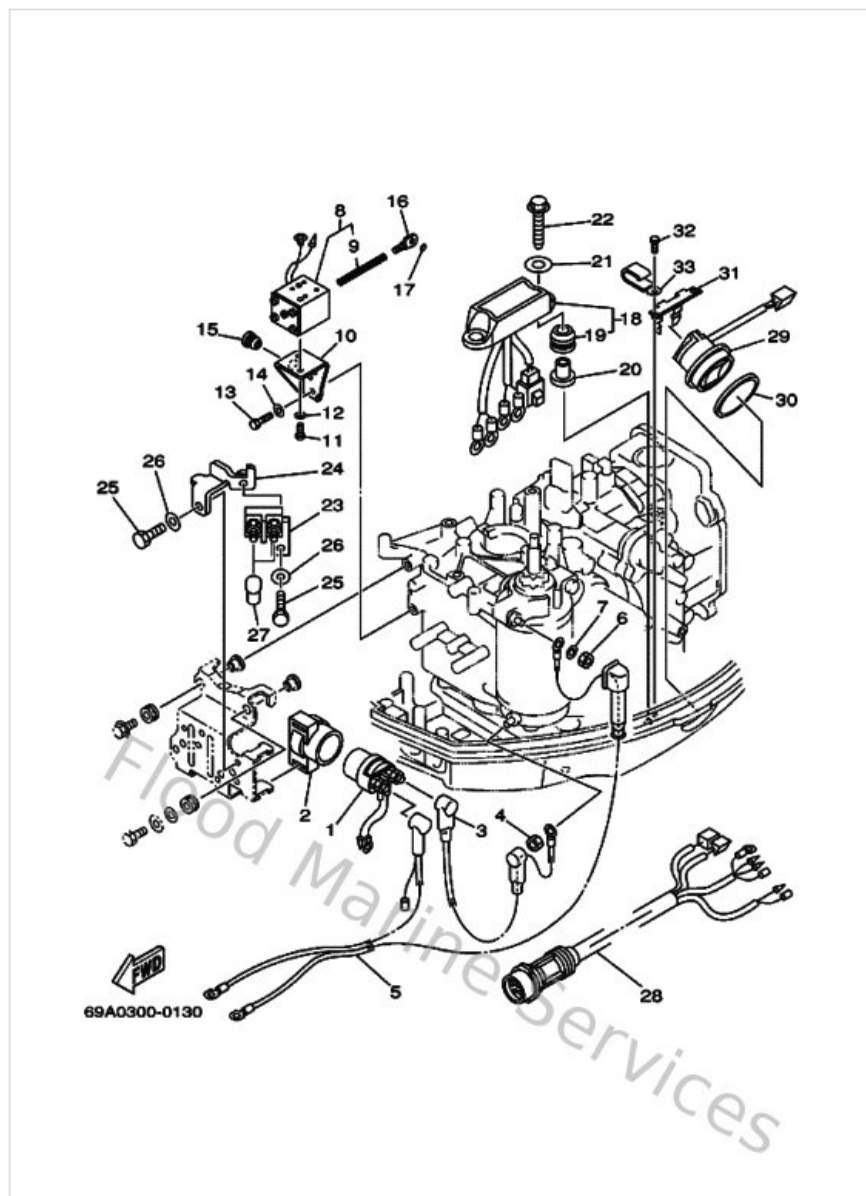
Electrical 1



69B0010-1120

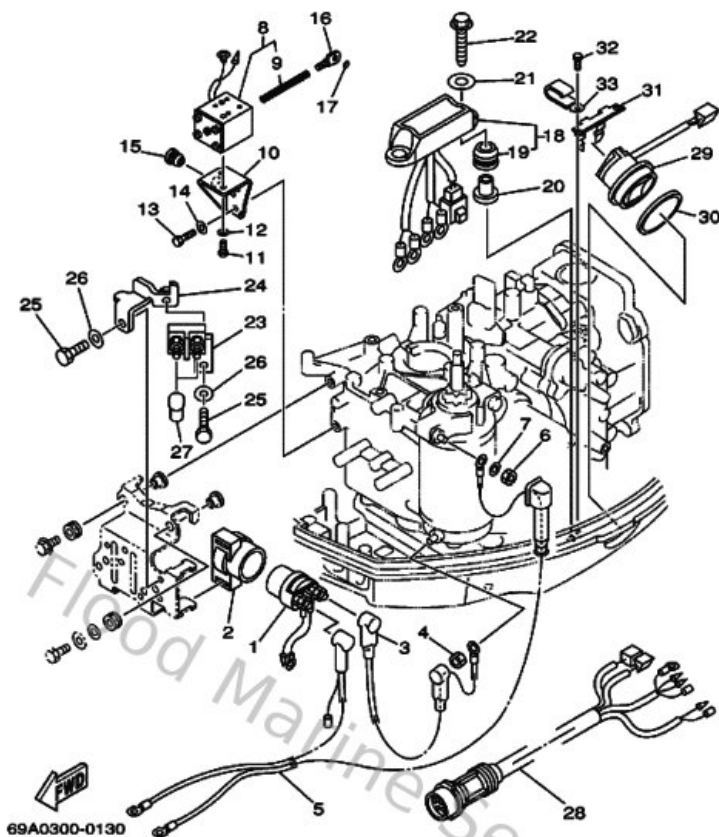
| Ref | Part | |
|-----|---|-------------------------|
| 18 | 9046415M0800 Clamp (6h1) | Buy now |
| 19 | 6G881960A100 Rectifier & regulator assembly | Buy now |
| 20 | 970950601600 Bolt, hexagon deep recess | Buy now |
| 22 | 6G8821500000 Fuse holder assembly | Buy now |
| 23 | 663821510000 Fuse | Buy now |
| 24 | 6G5821520000 Holder, fuse | Buy now |
| 25 | 65W854100100 Emergency signal light assembly | Buy now |
| 26 | 6H1835570000 Tube | Buy now |

Electrical 2



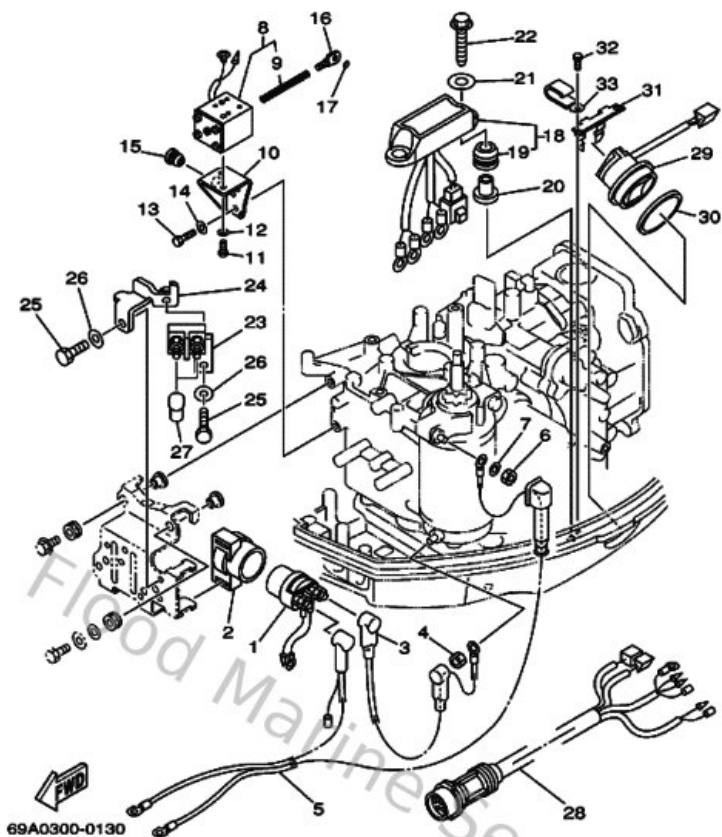
| Ref | Part | |
|-----|---|-------------------------|
| 1 | 6G1819411000 Starter relay | Buy now |
| 2 | 6G1819520000 Holder, relay | Buy now |
| 3 | 66M821170000 Wire, lead | Buy now |
| 4 | 65W8182B0000 Nut, special | Buy now |
| 5 | 66T82105J100 Battery cable | Buy now |
| 6 | 953800870000 Nut(661) | Buy now |
| 7 | 929900860000 Washer, plain (663) | Buy now |
| 8 | 66M861110000 Coil, solenoid | Buy now |
| 9 | 66M861160000 Wire, Pull | Buy now |
| 10 | 66M861120000 Stay Solenoid | Buy now |
| 11 | 978800500800 Screw, with washer | Buy now |
| 12 | 929900560000 Washer, plain (646) | Buy now |
| 13 | 970950601600 Bolt, hexagon deep recess | Buy now |
| 14 | 929950660000 Washer, plain (646) | Buy now |
| 15 | 9048010M1300 Grommet (6e0) | Buy now |

Electrical 2



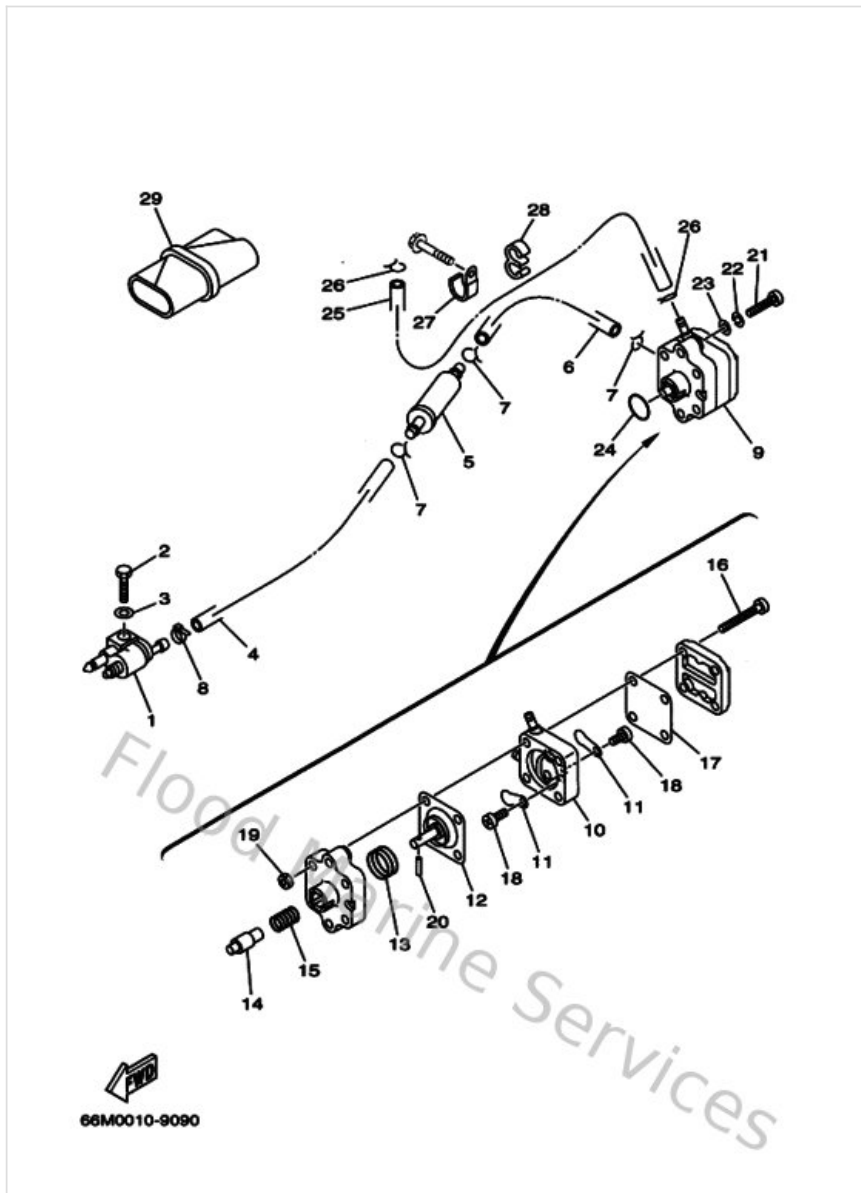
| Ref | Part | |
|-----|---|-------------------------|
| 16 | 66M861170000 Hook, wire pull | Buy now |
| 17 | 932100326100 O-ring (663) | Buy now |
| 18 | 69A819500000 Relay assembly | Buy now |
| 19 | 9048009M1200 Grommet (6a0) | Buy now |
| 20 | 9038706M0300 Collar (676) | Buy now |
| 21 | 902010641600 Washer, plate(663) | Buy now |
| 22 | 9010906MA200 Bolt | Buy now |
| 23 | 6H5819200000 Terminal assembly | Buy now |
| 24 | 69A819290000 Bracket Terminal | Buy now |
| 25 | 970950601200 Bolt(gh1) | Buy now |
| 27 | 6G5821191000 Cover, lead wire | Buy now |
| 28 | 69A825900000 Wire Harness assembly | Buy now |
| 29 | 63D825631000 Trim & tilt switch assembly | Buy now |
| 30 | 6E5825870000 Gasket | Buy now |
| 31 | 69A836140000 Bracket | Buy now |

Electrical 2



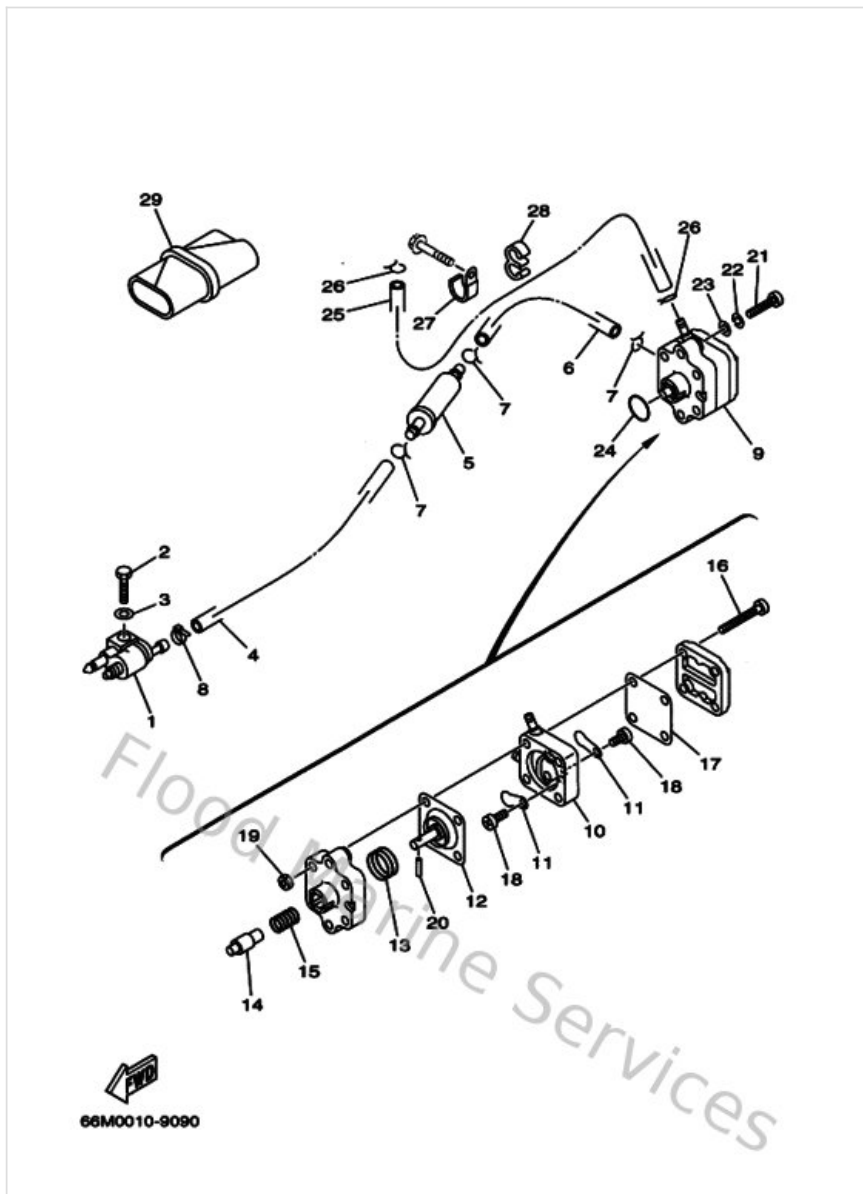
| Ref | Part | |
|-----|---------------------------------------|-------------------------|
| 32 | 9010906M8600 Bolt | Buy now |
| 33 | 9046506M8800 Clamp | Buy now |

Fuel



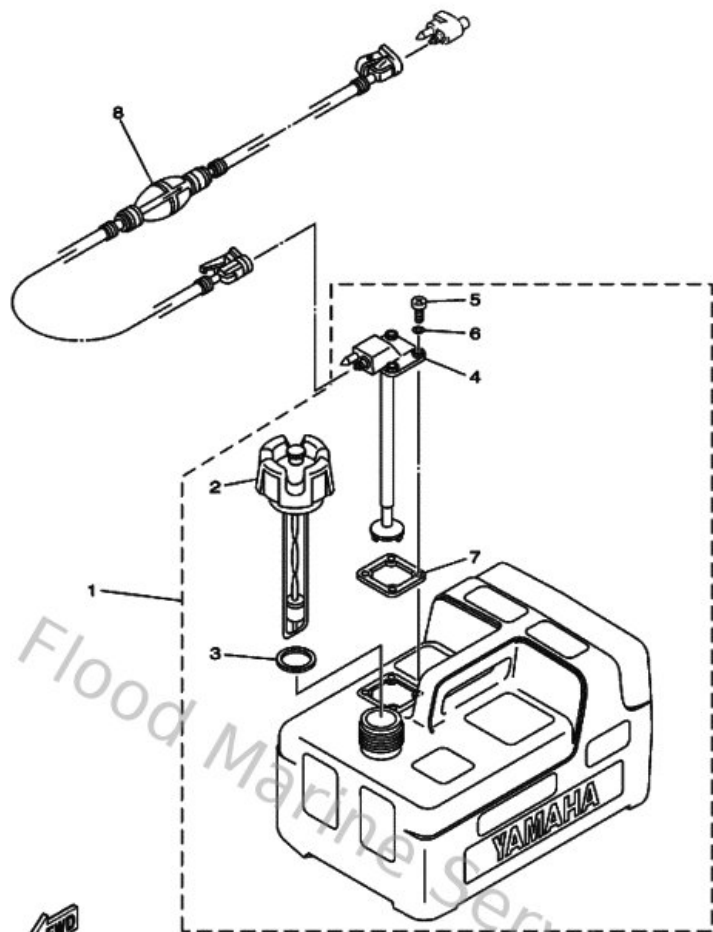
| Ref | Part | |
|-----|---|-------------------------|
| 1 | 6G1243040200 Fuel pipe joint comp. 1 | Buy now |
| 2 | 970950602000 Bolt(7u8) | Buy now |
| 3 | 929900660000 Washer, plain (646) | Buy now |
| 4 | 9044510M4000 Hose (I400) | Buy now |
| 5 | 65W242510000 Strainer 1 | Buy now |
| 6 | 9044510M4300 Hose (I400) | Buy now |
| 7 | 9046709M0300 Clip(6k8) | Buy now |
| 8 | 9046511M1000 Clamp | Buy now |
| 9 | 66M244101100 Fuel pump assembly | Buy now |
| 10 | 66M244130100 Body 2 | Buy now |
| 11 | 6A0244210100 Valve, check | Buy now |
| 12 | 66M244110100 Diaphragm | Buy now |
| 13 | 66M244230000 Spring, diaphragm | Buy now |
| 14 | 66M131310000 Plunger | Buy now |
| 15 | 66M244540000 Spring | Buy now |

Fuel



| Ref | Part | |
|-----|--|-------------------------|
| 16 | 66M244440000 Screw | Buy now |
| 17 | 66M244710100 Diaphragm | Buy now |
| 18 | 6E7143250000 Screw, pan head | Buy now |
| 19 | 953800560000 Nut, hexagon (663) | Buy now |
| 20 | 66M243740000 Pin | Buy now |
| 21 | 978800603000 Screw, pan head(6e0) | Buy now |
| 22 | 929950610000 Washer(6a1) | Buy now |
| 24 | 9321020M6500 O-ring | Buy now |
| 27 | 9046506M8600 Clamp | Buy now |
| 28 | 9046409M3100 Clamp(6m7) | Buy now |
| 29 | 62Y281000000 Tool kit | Buy now |

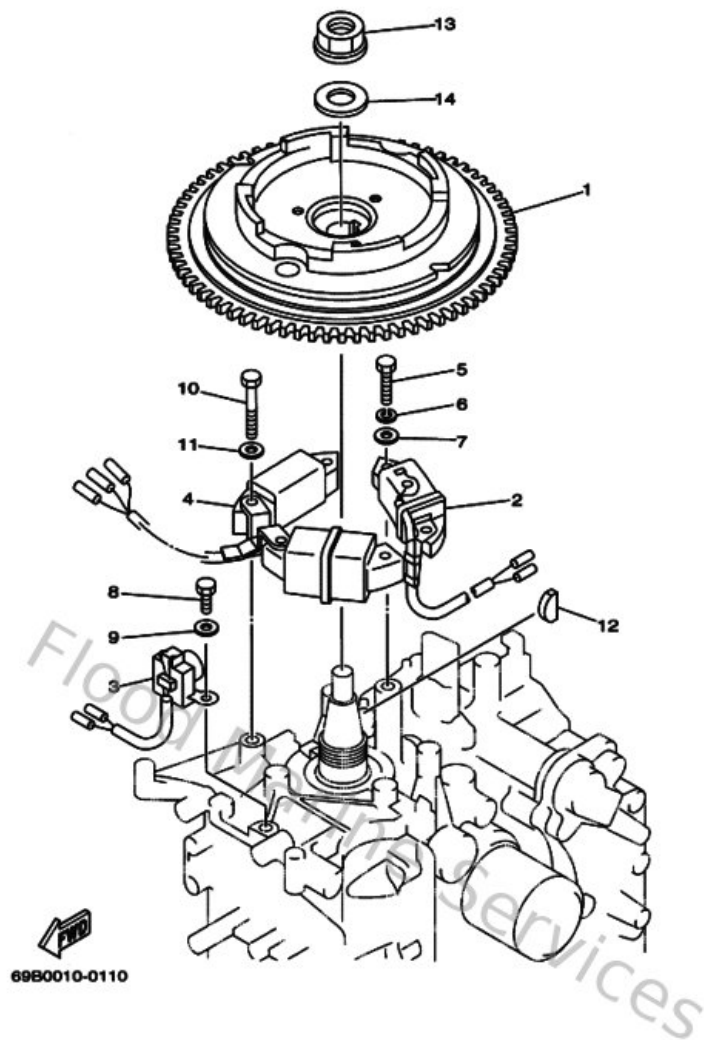
Fuel Tank



66R0700-9260

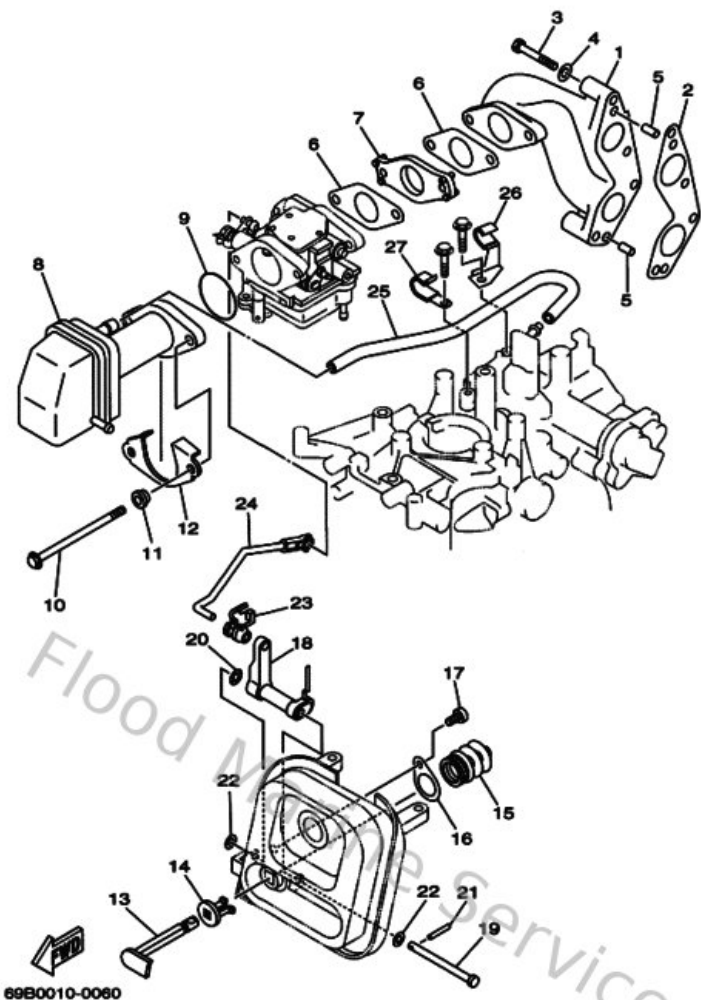
| Ref | Part | |
|-----|--|-------------------------|
| 1 | 6YL242010100 Fuel Tank assembly (12L) | Buy now |
| 2 | 6YL246100000 Cap Assembly | Buy now |
| 3 | 6YL246410000 Gasket, cap 1 | Buy now |
| 4 | 6YL242600100 Fuel meter assembly | Buy now |
| 5 | 9015705M1600 Screw, pan head | Buy now |
| 6 | 6YL243290000 Seal | Buy now |
| 7 | 6YL242680100 Gasket, fuel meter | Buy now |
| 8 | 6YL243065200 Fuel pipe comp. 1 | Buy now |

Generator



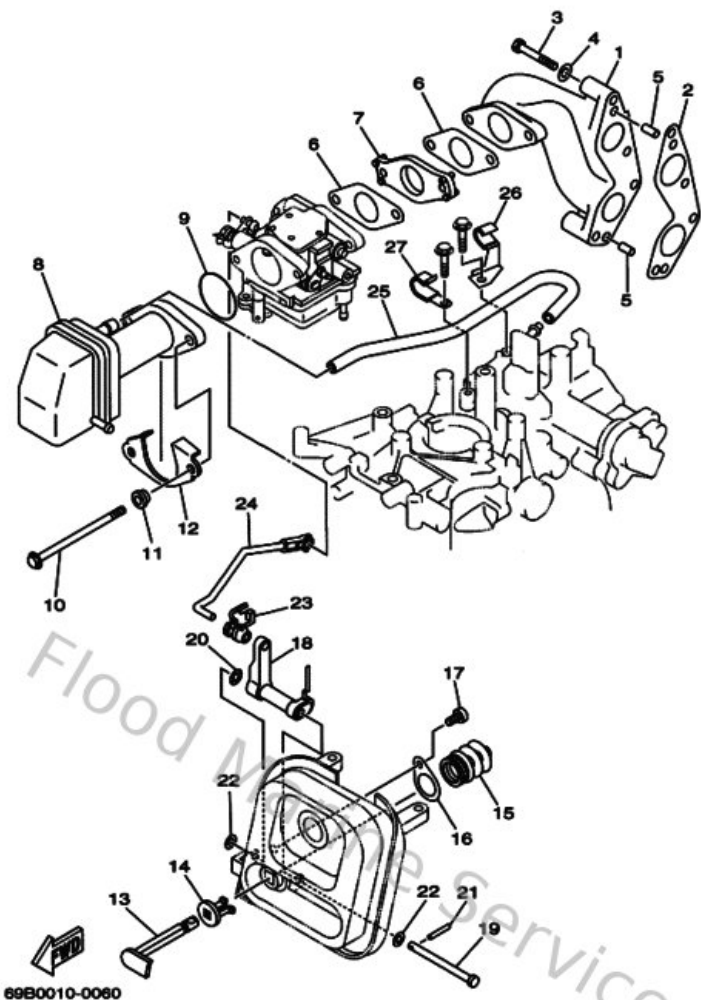
| Ref | Part | |
|-----|---|-------------------------|
| 1 | 66M855501000 Rotor assembly | Buy now |
| 2 | 66M855200000 Coil, charge | Buy now |
| 3 | 66M855800000 Coil, pulser | Buy now |
| 4 | 66M855331000 Coil, Lighting | Buy now |
| 5 | 970950602500 Bolt | Buy now |
| 6 | 929950610000 Washer(6a1) | Buy now |
| 7 | 929950660000 Washer, plain (646) | Buy now |
| 8 | 970950601600 Bolt, hexagon deep recess | Buy now |
| 10 | 970950604000 Bolt (682) | Buy now |
| 12 | 902800501300 Key, woodruff | Buy now |
| 13 | 9017916M0500 Nut (689) | Buy now |
| 14 | 9020116M4400 Washer (689) | Buy now |

Intake



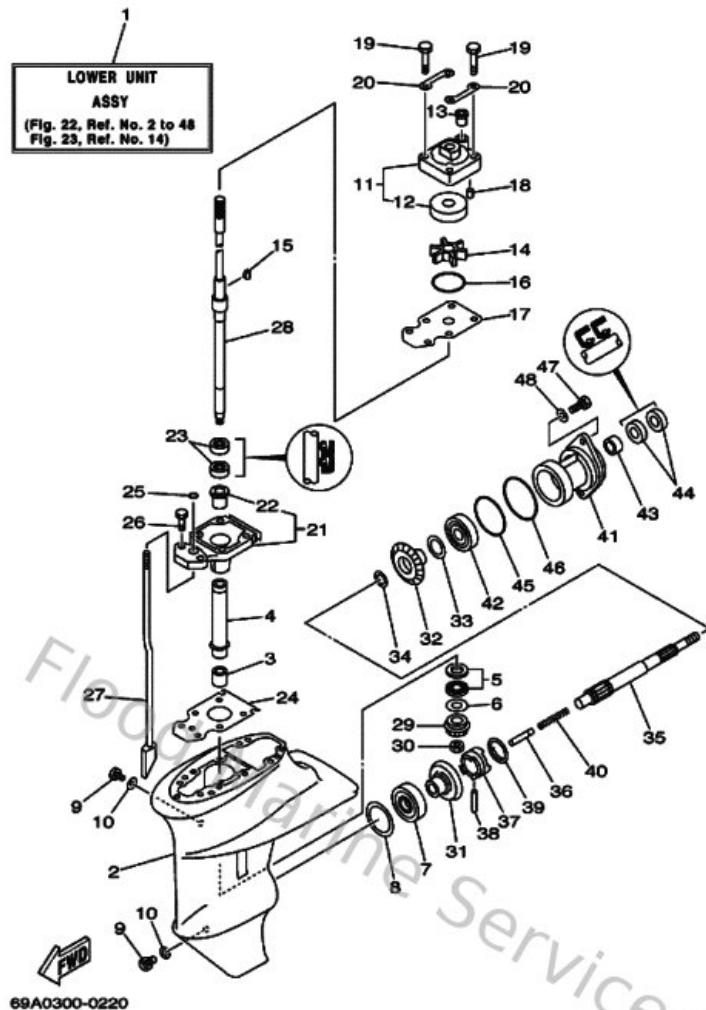
| Ref | Part | |
|-----|---|-------------------------|
| 1 | 66M136410094 Manifold 1 | Buy now |
| 2 | 66M136450000 Gasket, manifold 1 | Buy now |
| 3 | 970950604000 Bolt (682) | Buy now |
| 4 | 929950660000 Washer, plain (646) | Buy now |
| 5 | 936061201900 Pin, dowel (614) | Buy now |
| 6 | 66M136460000 Gasket, manifold 2 | Buy now |
| 7 | 66M142710000 Insulator | Buy now |
| 8 | 66M144400000 Silencer assembly, intake | Buy now |
| 9 | 9321035M8600 O-ring(612) | Buy now |
| 10 | 9011906M7600 Bolt, with washer | Buy now |
| 11 | 9038706M7900 Collar | Buy now |
| 12 | 66M144770000 Plate | Buy now |
| 13 | 66M412710000 Knob, choke | Buy now |
| 14 | 689412730000 Grommet | Buy now |
| 15 | 66M412920000 Bush 2 | Buy now |

Intake



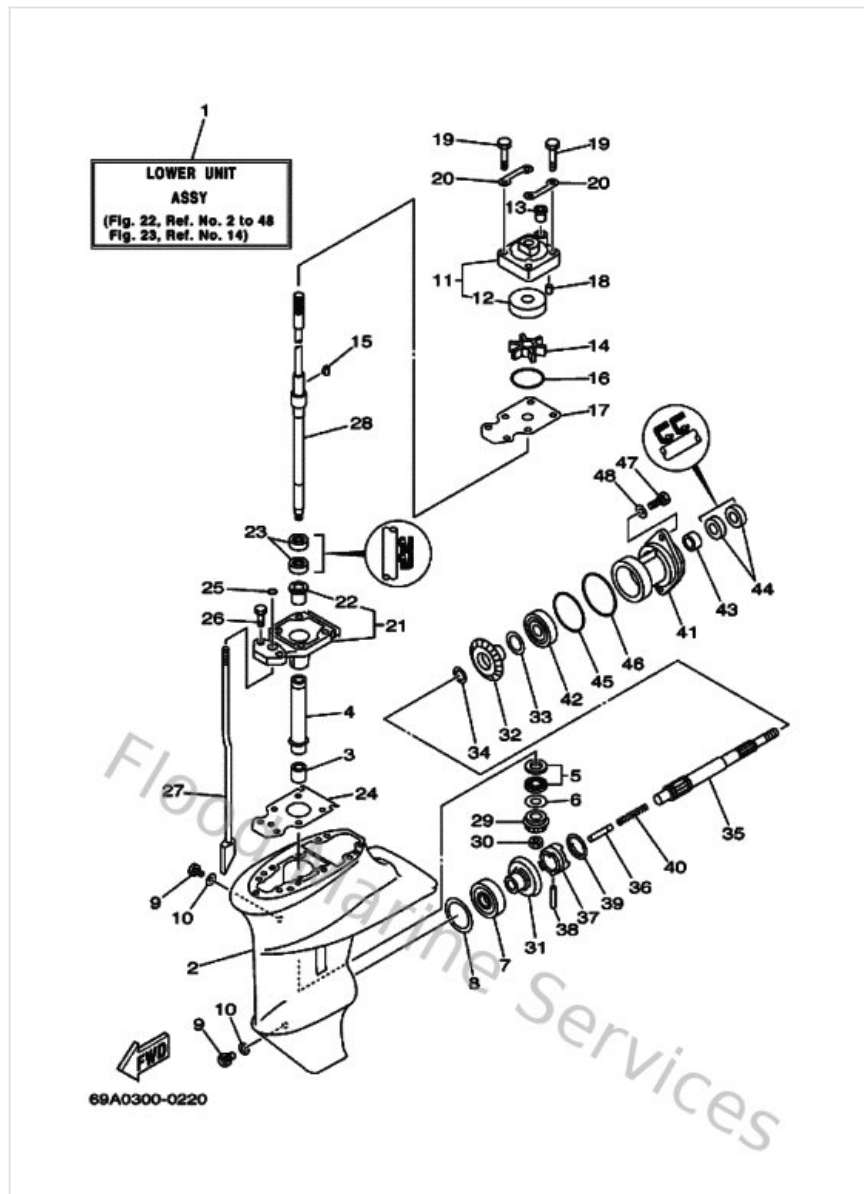
| Ref | Part | |
|-----|---|-------------------------|
| 16 | 66M412980000 Washer 2 | Buy now |
| 17 | 977805051000 Screw, tapping(6u1) | Buy now |
| 18 | 66M412520000 Lever, choke 1 | Buy now |
| 19 | 9024005M2000 Pin, clevis | Buy now |
| 20 | 902060500500 Washer, wave(656) | Buy now |
| 21 | 916902001600 Pin, spring (677) | Buy now |
| 22 | 902020508800 Washer, plate (666) | Buy now |
| 23 | 6R5412370000 Joint, link | Buy now |
| 24 | 66M412560000 Rod, choke 1 | Buy now |
| 25 | 66M153730000 Pipe, breather | Buy now |
| 26 | 9046508M8200 Clamp | Buy now |
| 27 | 9046508M8300 Clamp | Buy now |

Lower Casing & Drive 1



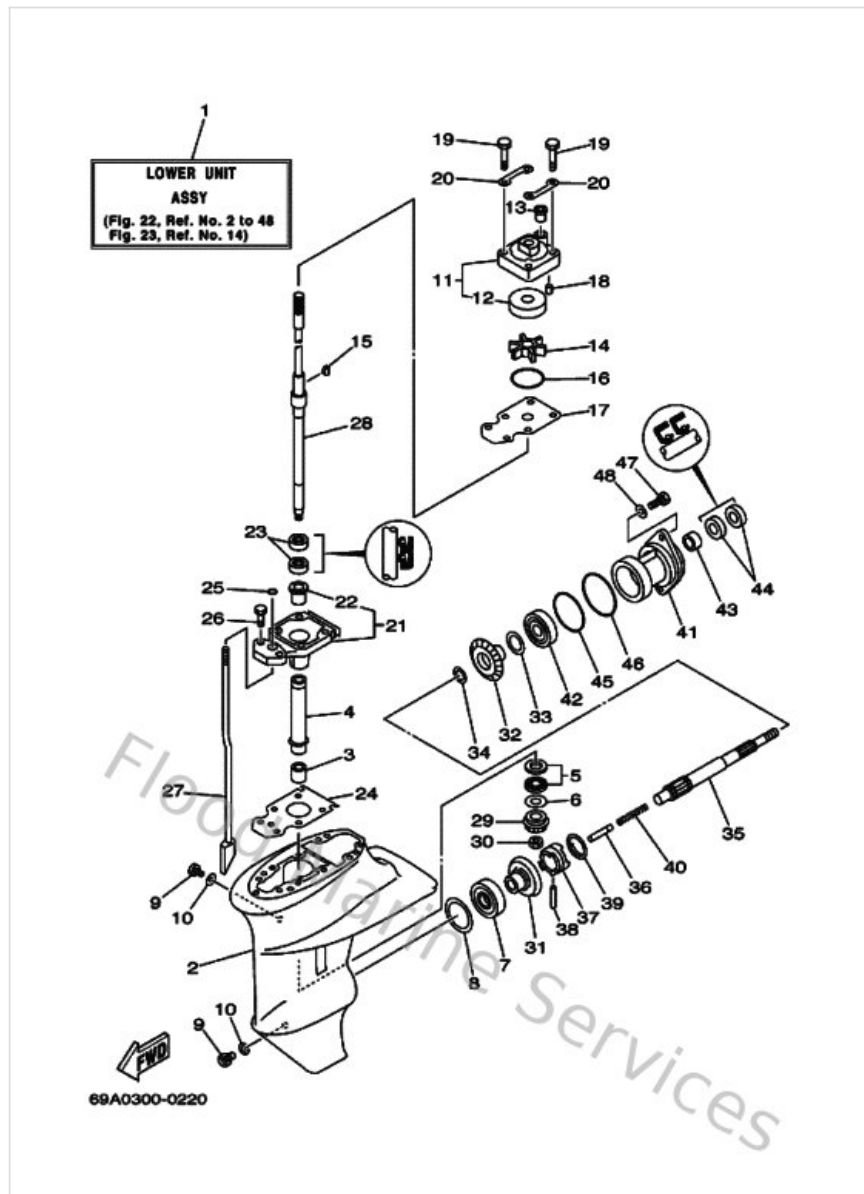
| Ref | Part | |
|-----|---|-------------------------|
| 1 | 69A45300114D Lower Unit assembly | Buy now |
| 2 | 63V45311018D Casing, lower | Buy now |
| 3 | 93315314V800 Bearing, needle (6e7) | Buy now |
| 4 | 63V455360000 Sleeve, drive shaft | Buy now |
| 5 | 933414141400 Bearing | Buy now |
| 6 | 6E8455873000 Shim (t:1.20mm) | Buy now |
| 7 | 933320000500 Brg,cyl-cal roller 0.19g nt | Buy now |
| 8 | 664455670130 Shim (t:0.30mm) | Buy now |
| 9 | 9034008M0400 Plug, straight screw | Buy now |
| 10 | 904300802000 Gasket | Buy now |
| 11 | 63V443010000 Water pump housing comp. | Buy now |
| 12 | 63V443220000 Insert, cartridge | Buy now |
| 13 | 647443660000 Damper, water seal 2 | Buy now |
| 14 | 63V443520100 Impeller | Buy now |
| 15 | 664443380000 Key, woodruff | Buy now |

Lower Casing & Drive 1



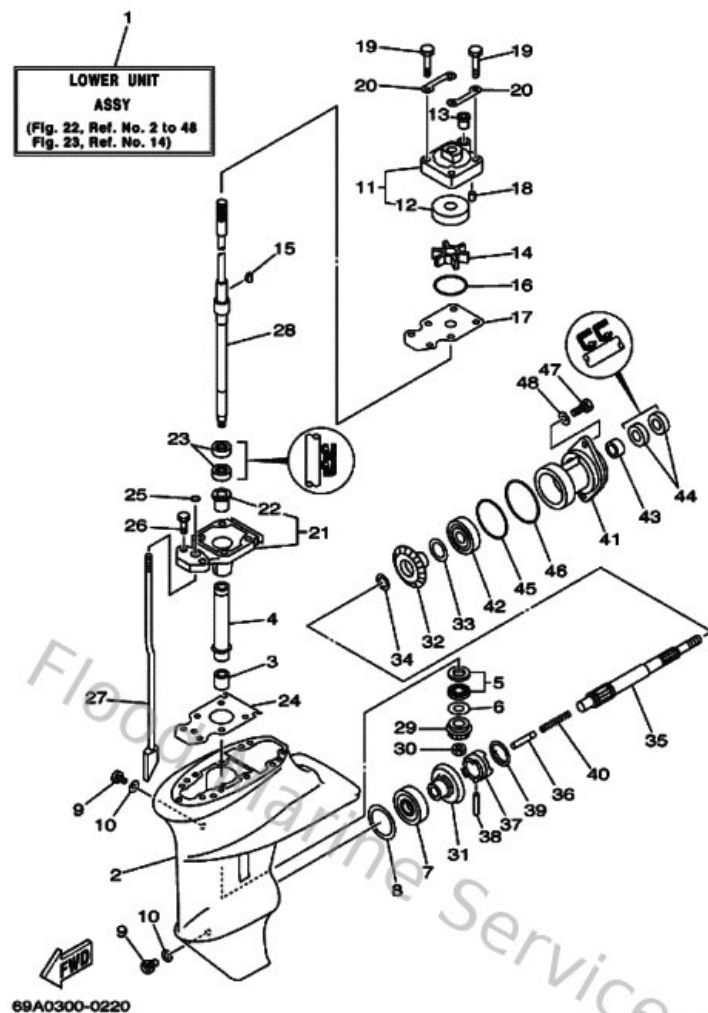
| Ref | Part | |
|-----|--|-------------------------|
| 16 | 932104439800 O-ring(55x) | Buy now |
| 17 | 63V443230000 Outer plate, cartridge | Buy now |
| 18 | 9360410M0300 Pin, dowel (688) | Buy now |
| 19 | 970800804500 Bolt, hexagon | Buy now |
| 20 | 63V443280000 Plate | Buy now |
| 21 | 63V4533100CA Housing, bearing | Buy now |
| 22 | 903811402000 Bushing, drive shaft 1 | Buy now |
| 23 | 931012004800 Oil seal (20x30x6-648) | Buy now |
| 24 | 63V45315A000 Packing, lower casing | Buy now |
| 25 | 9321006ME600 O-ring | Buy now |
| 26 | 970800802500 Screw, bind(j36) | Buy now |
| 27 | 66M441501000 Shift cam assembly | Buy now |
| 28 | 69A455100000 Drive Shaft assembly | Buy now |
| 29 | 63V455510000 Pinion | Buy now |
| 30 | 9017908M0600 Nut (6e7) | Buy now |

Lower Casing & Drive 1



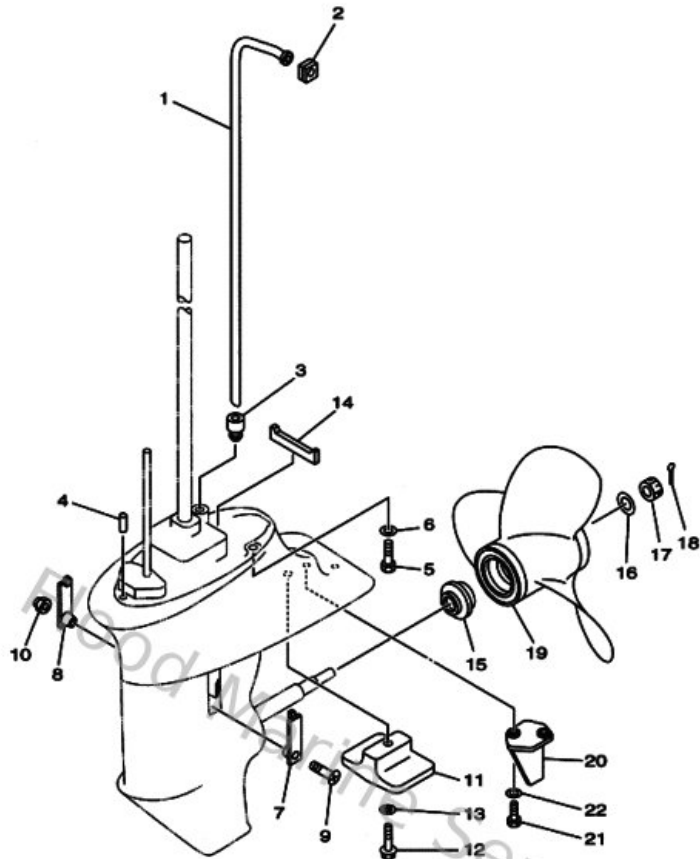
| Ref | Part | |
|-----|--|-------------------------|
| 31 | 6E7455600100 Gear | Buy now |
| 32 | 6E7455710000 Gear 2 | Buy now |
| 33 | 626455774000 Shim (t:0.50mm) | Buy now |
| 34 | 902011768200 Washer, plate (2k7) | Buy now |
| 35 | 683456110000 Shaft propeller | Buy now |
| 36 | 650456350000 Plunger, shift | Buy now |
| 37 | 682456310000 Clutch, dog | Buy now |
| 38 | 902500501000 Pin straight 648456320000 | Buy now |
| 39 | 648456330000 Ring, cross pin | Buy now |
| 40 | 9050114M0600 Spring, compression | Buy now |
| 41 | 68345361028D Cap, lower casing | Buy now |
| 42 | 933060050100 Bearing(1ff) | Buy now |
| 43 | 93315317U200 Brg,cyl-cal roller 14g (683) | Buy now |
| 44 | 931011705400 Oil seal (17x30x6-650) | Buy now |
| 45 | 9321057M0900 O-ring (683) | Buy now |

Lower Casing & Drive 1



| Ref | Part | |
|-----|---|-------------------------|
| 46 | 9321056M8000 O-ring(6j8) | Buy now |
| 47 | 970950602000 Bolt(7u8) | Buy now |
| 48 | 929950660000 Washer, plain (646) | Buy now |

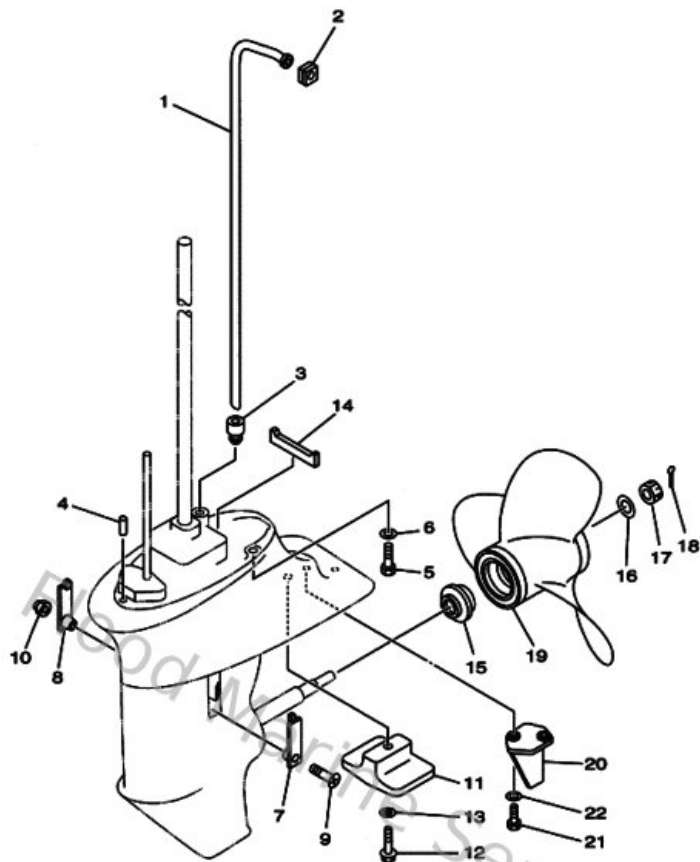
Lower Casing & Drive 2



69A0300-0230

| Ref | Part | |
|-----|--|-------------------------|
| 1 | 66M443610000 Tube, Water 1 | Buy now |
| 2 | 63V443651000 Damper, water seal 1 | Buy now |
| 3 | 63V443680000 Rubber, water seal 4 | Buy now |
| 4 | 9360412M0700 Pin, dowel (688) | Buy now |
| 5 | 970750803000 Bolt, hexagon (fj1) | Buy now |
| 6 | 929900860000 Washer, plain (663) | Buy now |
| 7 | 6G1452140000 Cover, water inlet | Buy now |
| 8 | 63V452150000 Cover, water inlet | Buy now |
| 9 | 9015205M0400 Screw, countersunk | Buy now |
| 10 | 901850590400 Nut nylon (sus)(ex4) | Buy now |
| 11 | 61N452510000 Anode | Buy now |
| 12 | 958950603000 Bolt, flange deep recess | Buy now |
| 13 | 929900630000 Washer, tooth | Buy now |
| 14 | 63V453750000 Damper, seal | Buy now |
| 15 | 6E7459870100 Spacer | Buy now |

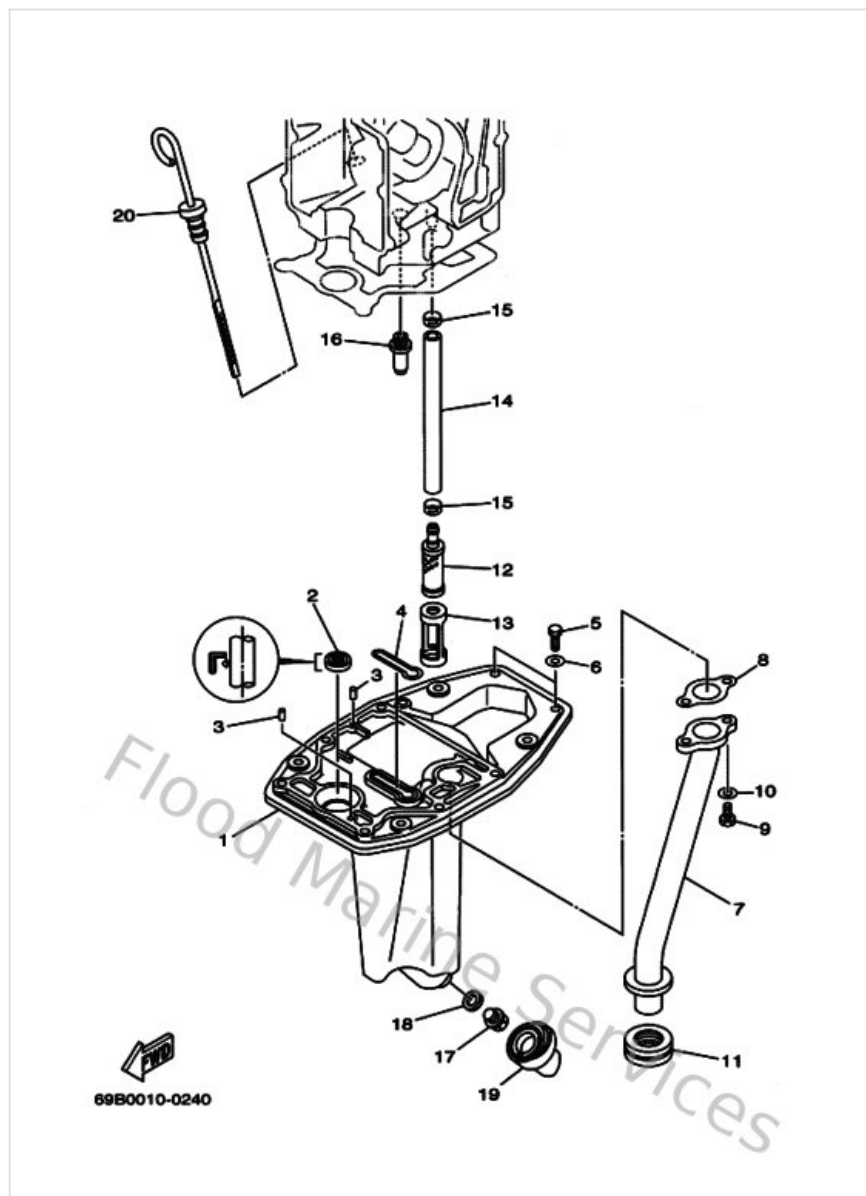
Lower Casing & Drive 2



69A0300-0230

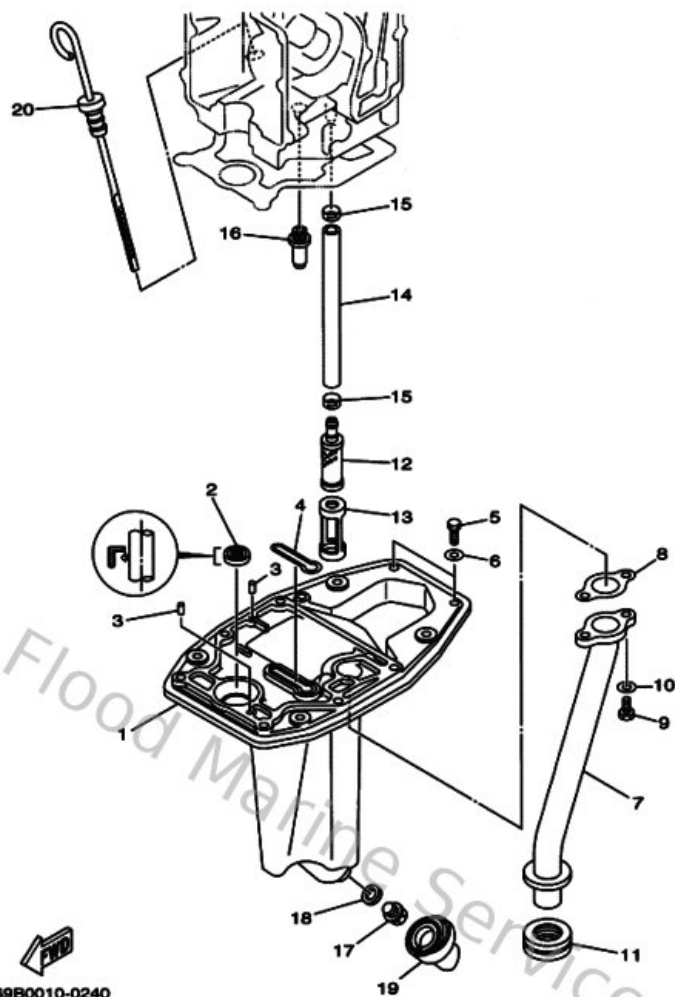
| Ref | Part | |
|-----|---|-------------------------|
| 16 | 9020110M0100 Washer, plate(6m7) | Buy now |
| 17 | 9017110M0100 Nut castle (683) | Buy now |
| 18 | 914903002000 Pin cotter | Buy now |
| 19 | 6834595200EL Propeller (3X9-1/4"x9-3/4"-J) | Buy now |
| 20 | 66M453710000 Tab-trim | Buy now |
| 21 | 970950601600 Bolt, hexagon deep recess | Buy now |
| 22 | 929950660000 Washer, plain (646) | Buy now |

Oil Pan



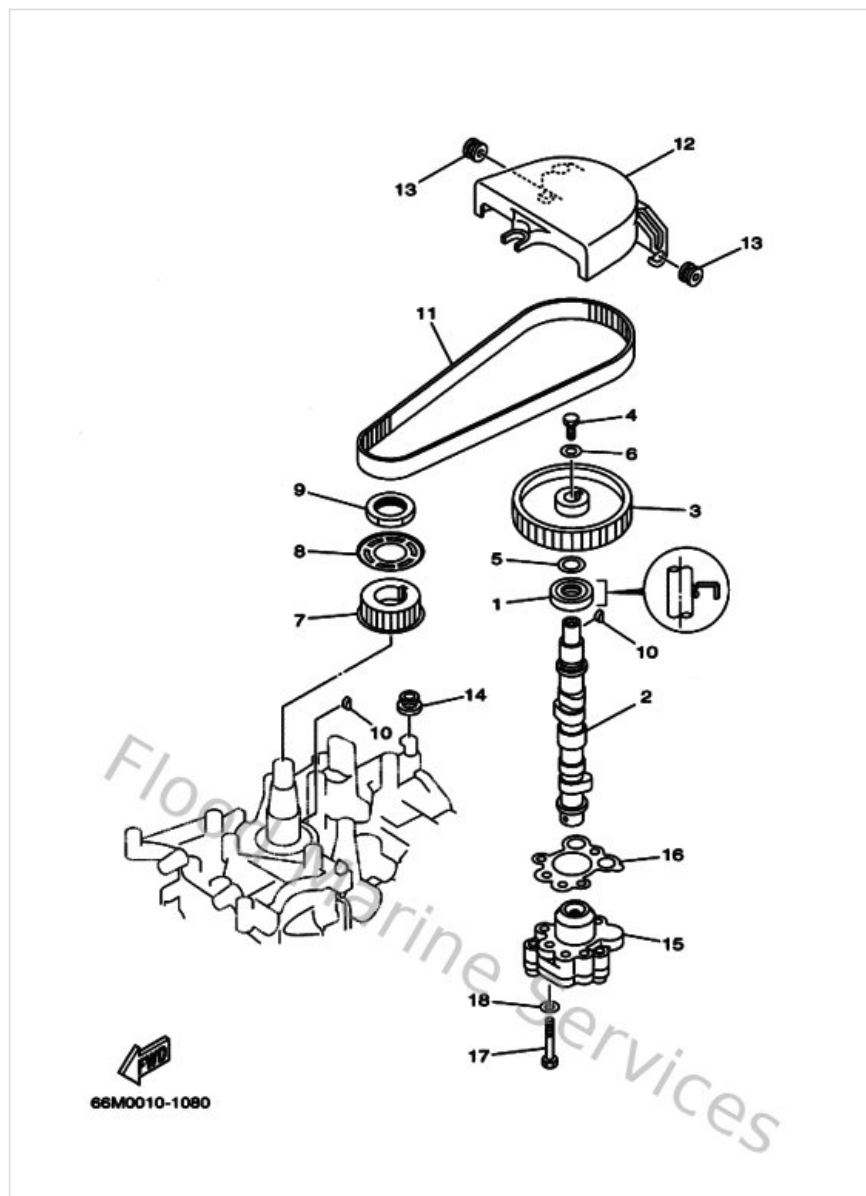
| Ref | Part | |
|-----|--|-------------------------|
| 1 | 66M41137005B Guide, exhaust | Buy now |
| 2 | 9310112M6300 Oil seal | Buy now |
| 3 | 936061201900 Pin, dowel (614) | Buy now |
| 4 | 66M113550000 Seal, cylinder 1 | Buy now |
| 5 | 970950602000 Bolt(7u8) | Buy now |
| 6 | 929900660000 Washer, plain (646) | Buy now |
| 7 | 66M411310194 Manifold, Ext. 1 | Buy now |
| 8 | 66M411330000 Gasket, exhaust manifold 1 | Buy now |
| 9 | 970950601600 Bolt, hexagon deep recess | Buy now |
| 11 | 66M411380000 Seal, ext. 1 | Buy now |
| 12 | 66M134210000 Strainer 2 | Buy now |
| 13 | 66M134170000 Cover, Strainer | Buy now |
| 14 | 66M134160000 Pipe Oil 1 | Buy now |
| 15 | 66M243510000 Band 1 | Buy now |
| 16 | 6G8115750000 Relief valve ass'y | Buy now |

Oil Pan



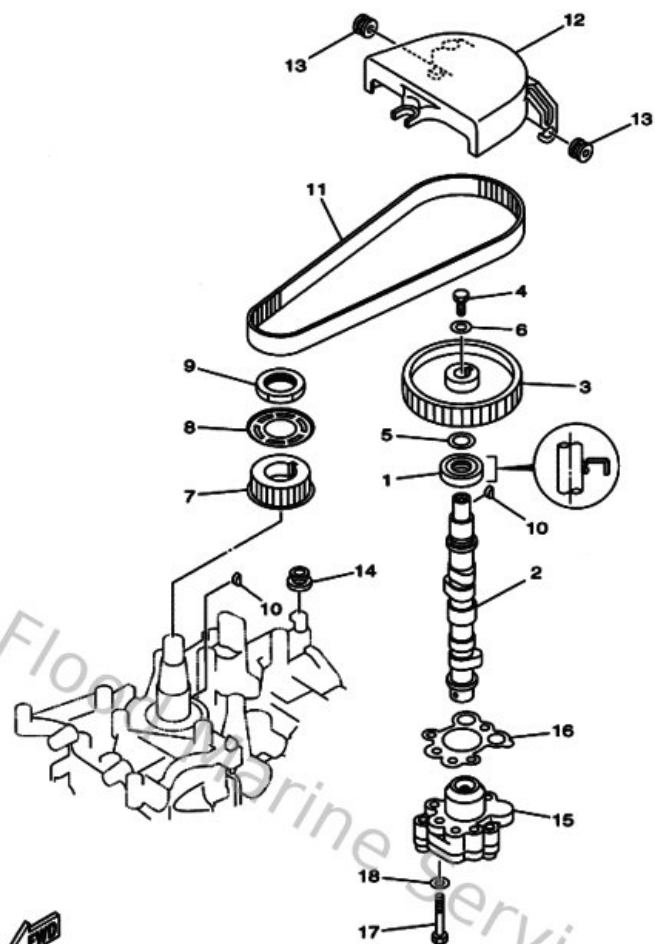
| Ref | Part | |
|-----|---|-------------------------|
| 17 | 9034014M0600 Plug, straight screw(62y) | Buy now |
| 18 | 9043014M0900 Gasket | Buy now |
| 19 | 66M153160000 Damper 1 | Buy now |
| 20 | 66M153620000 Plug, Oil Level | Buy now |

Oil Pump



| Ref | Part | |
|-----|---|-------------------------|
| 1 | 9310218M2100 Oil seal (6g8) | Buy now |
| 2 | 66M121711000 Camshaft 1 | Buy now |
| 3 | 66M115370094 Gear, driven | Buy now |
| 4 | 970140601600 Bolt, hexagon deep recess | Buy now |
| 5 | 902011320100 Washer 6474283300 | Buy now |
| 6 | 9020106M9400 Washer (6g8) | Buy now |
| 7 | 66M115361000 Gear, drive | Buy now |
| 8 | 66M115570000 Washer 1 | Buy now |
| 9 | 9017028M3700 Nut | Buy now |
| 10 | 902800301700 Key woodruff 146115450000 | Buy now |
| 11 | 66M462410000 Belt | Buy now |
| 12 | 66M462970000 Cover, dust | Buy now |
| 13 | 9048010M1600 Grommet(6j8) | Buy now |
| 14 | 904801207200 Grommet(53y) | Buy now |
| 15 | 66M133001000 Oil Pump assembly | Buy now |

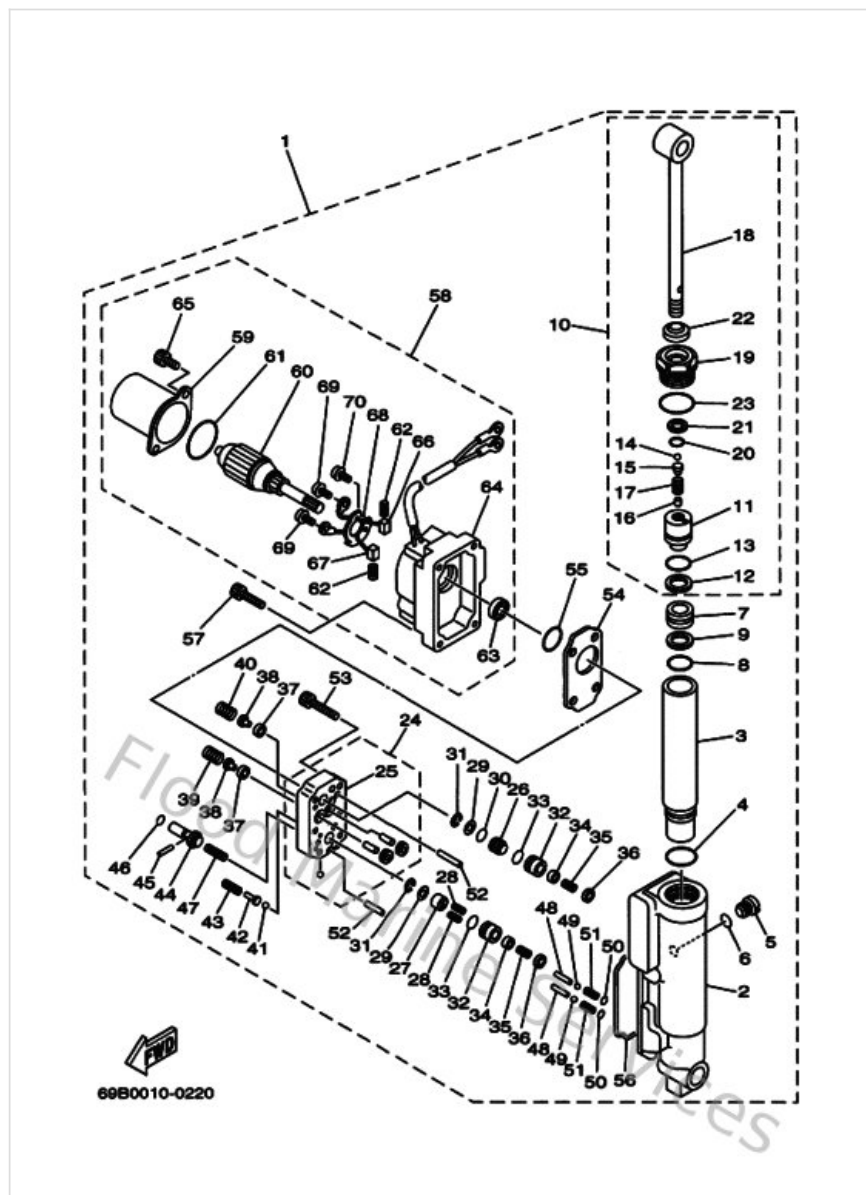
Oil Pump



66M0010-1080

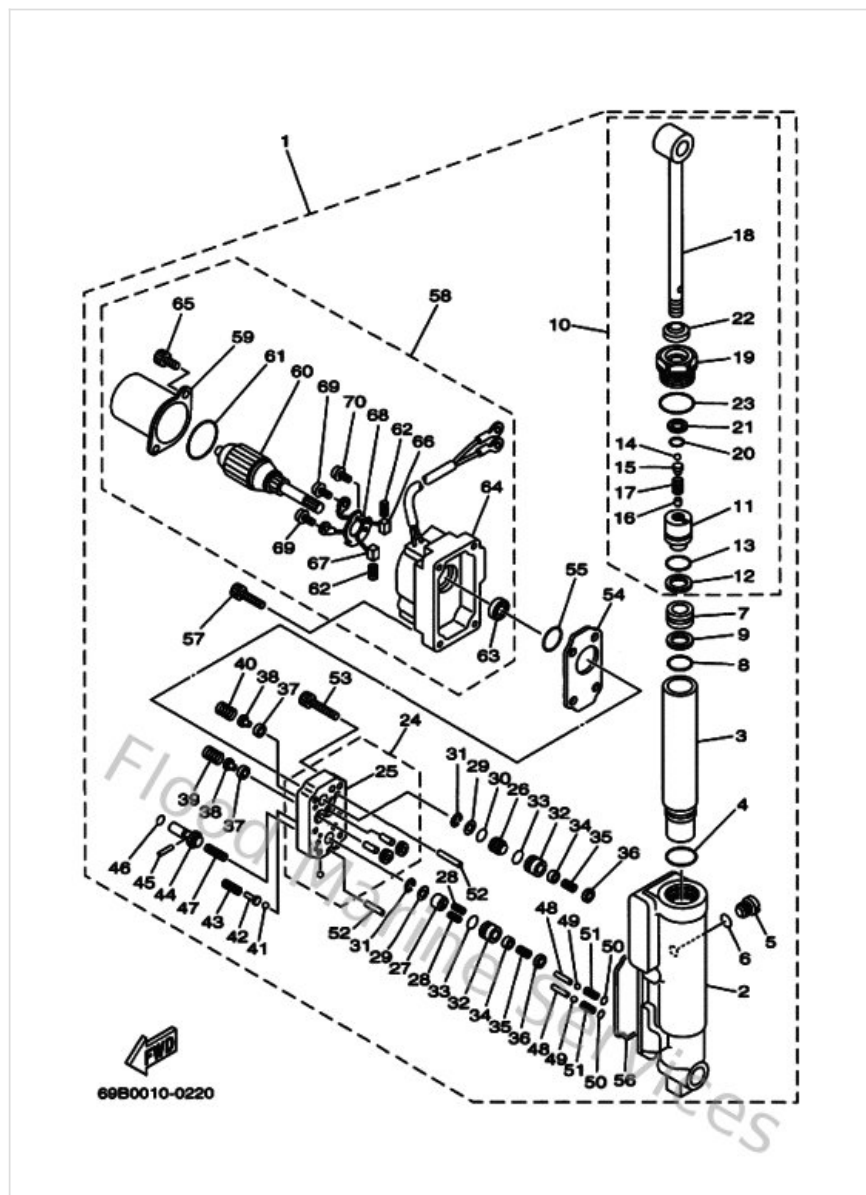
| Ref | Part | |
|-----|---|-------------------------|
| 16 | 66M133291000 Gasket, pump cover | Buy now |
| 17 | 970950603500 Bolt(j52) | Buy now |
| 18 | 929950660000 Washer, plain (646) | Buy now |

Power Trim & Tilt Assy 1



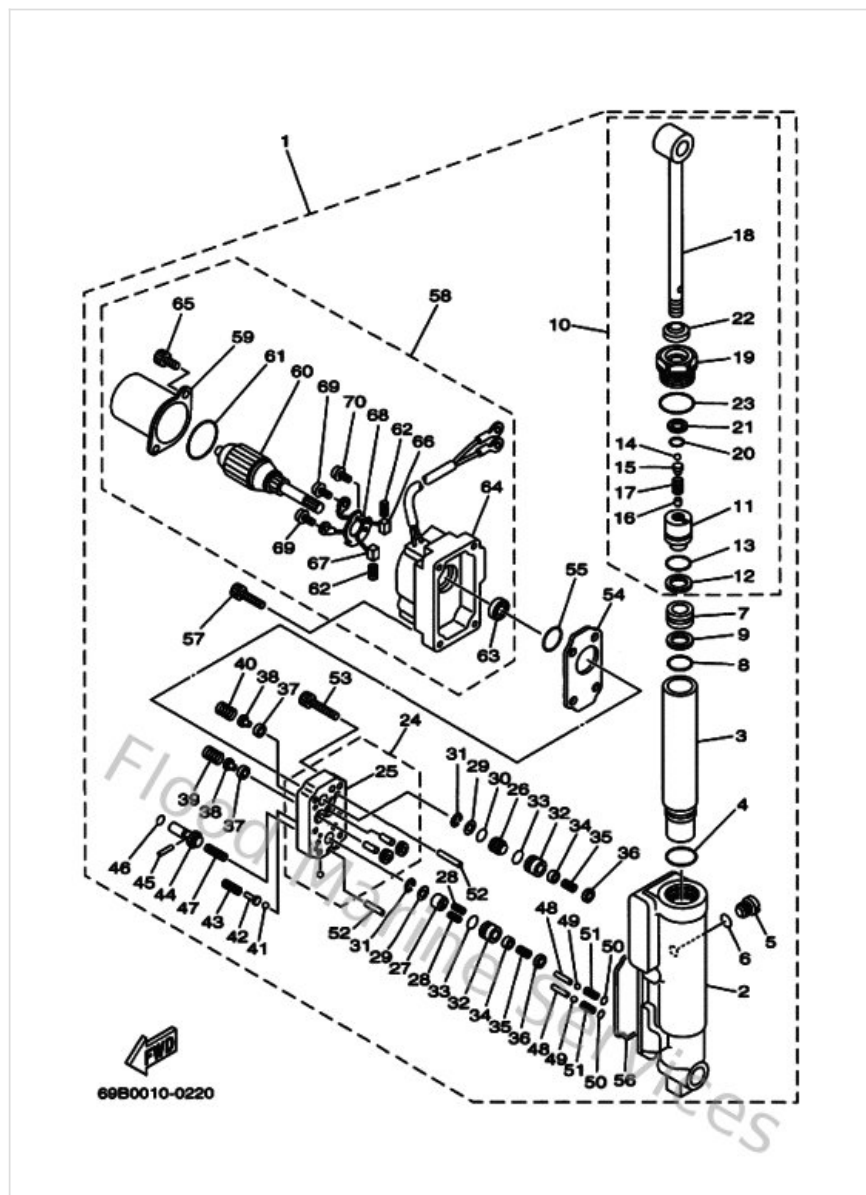
| Ref | Part | |
|-----|---|-------------------------|
| 1 | 69A43840004D Power tilt assembly | Buy now |
| 2 | 69A4380K0000 Cylinder, tilt sub assembly | Buy now |
| 3 | 69A224710000 Case, cylinder | Buy now |
| 4 | 932102766600 O-ring(47x) | Buy now |
| 5 | 6H14388E1100 Plug, tapper screw | Buy now |
| 6 | 932100700300 O-ring (11m) | Buy now |
| 7 | 69A438140000 Piston, free | Buy now |
| 8 | 932102100100 O-ring | Buy now |
| 9 | 69A438720000 Ring, back up | Buy now |
| 10 | 69A438100000 Piston sub assembly | Buy now |
| 11 | 69A4380D0000 Piston comp. | Buy now |
| 14 | 935053203800 Ball(7fk) | Buy now |
| 15 | 65W4386A0000 Pin, absorber valve | Buy now |
| 16 | 936040613600 Pin, dowel | Buy now |
| 17 | 69A438570000 Spring, absorber valve | Buy now |

Power Trim & Tilt Assy 1



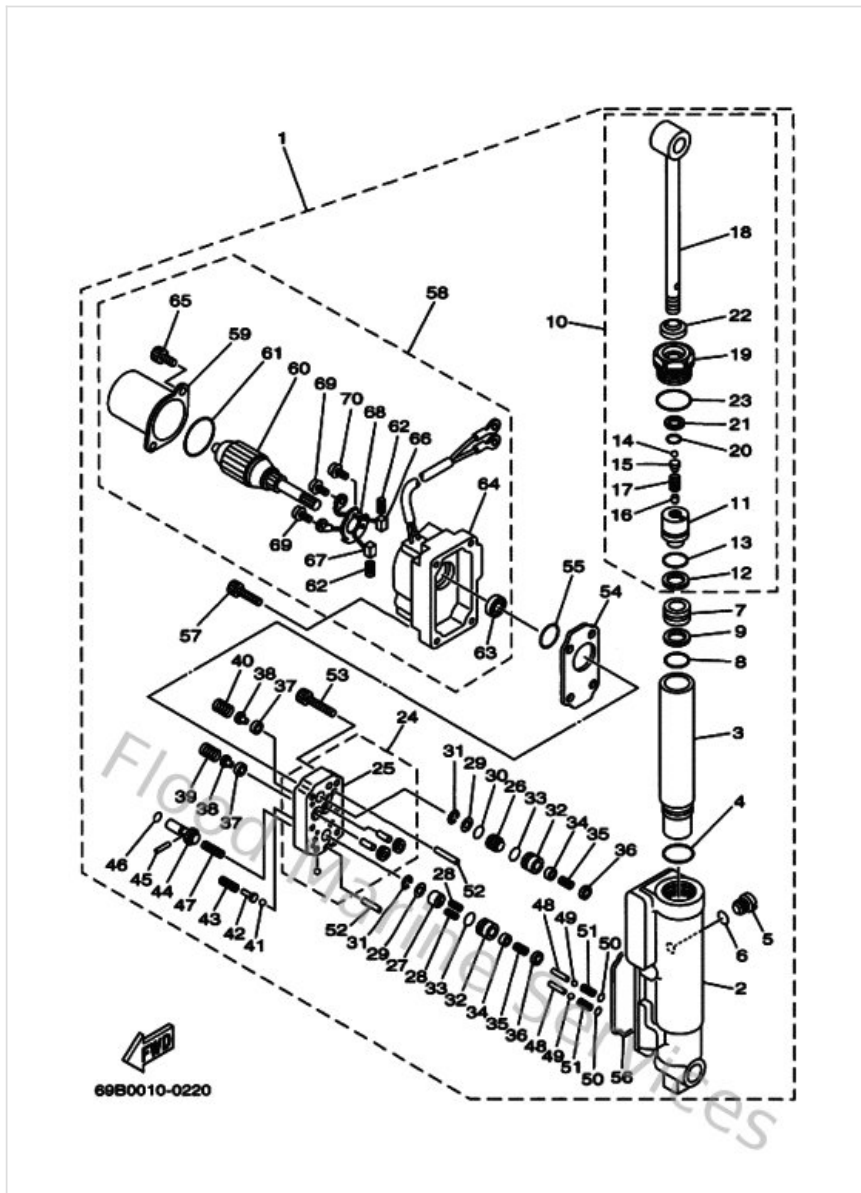
| Ref | Part | |
|-----|--|-------------------------|
| 18 | 69A438010000 Rod | Buy now |
| 19 | 69A438110000 Screw, cylinder end | Buy now |
| 20 | 6H1438660000 O-ring | Buy now |
| 21 | 69A438710000 Ring, back up | Buy now |
| 22 | 69A438120000 Seal, dust | Buy now |
| 23 | 69A438690000 O-ring | Buy now |
| 24 | 69A438300000 Gear pump assembly | Buy now |
| 25 | 69A4380C0000 Gear housing assembly | Buy now |
| 26 | 69A438410000 Piston, shuttle | Buy now |
| 27 | 69A4384M0000 Piston, shuttle 2 | Buy now |
| 28 | 62Y438940000 Spring, shuttle return | Buy now |
| 29 | 69A4384F0000 Seal, main valve | Buy now |
| 30 | 6H1438830000 O-ring | Buy now |
| 31 | 990010360000 Circlip(6I5) | Buy now |
| 32 | 69A4382G0000 Valve Seat | Buy now |

Power Trim & Tilt Assy 1



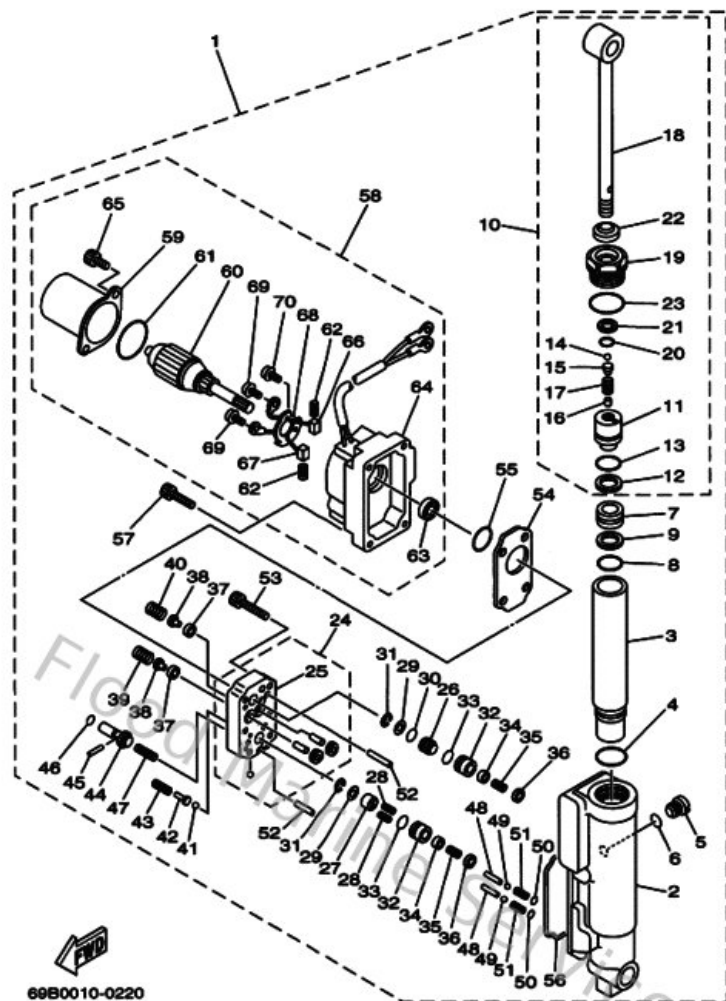
| Ref | Part | |
|-----|--|-------------------------|
| 33 | 9321012N5200 O-ring | Buy now |
| 34 | 6T4438080000 Seat valve comp. 1 | Buy now |
| 35 | 6T4438530000 Spring, main valve | Buy now |
| 36 | 6H1438160000 Filter 1 | Buy now |
| 37 | 6H14384G1100 Seal, relief valve | Buy now |
| 38 | 6H1438441000 Pin, valve support | Buy now |
| 39 | 69A438550000 Spring, up relief | Buy now |
| 40 | 6H1438561000 Spring, down relief | Buy now |
| 41 | 935010800100 Ball | Buy now |
| 42 | 69A4386A0000 Pin, absorber valve | Buy now |
| 43 | 69A438240000 Spring, down relief 2 | Buy now |
| 44 | 69A438480000 Rod, manual release | Buy now |
| 45 | 936021525000 Pin, dowel | Buy now |
| 46 | 932100600100 O-ring (26h) | Buy now |
| 47 | 69A438540000 Spring, manual release | Buy now |

Power Trim & Tilt Assy 1



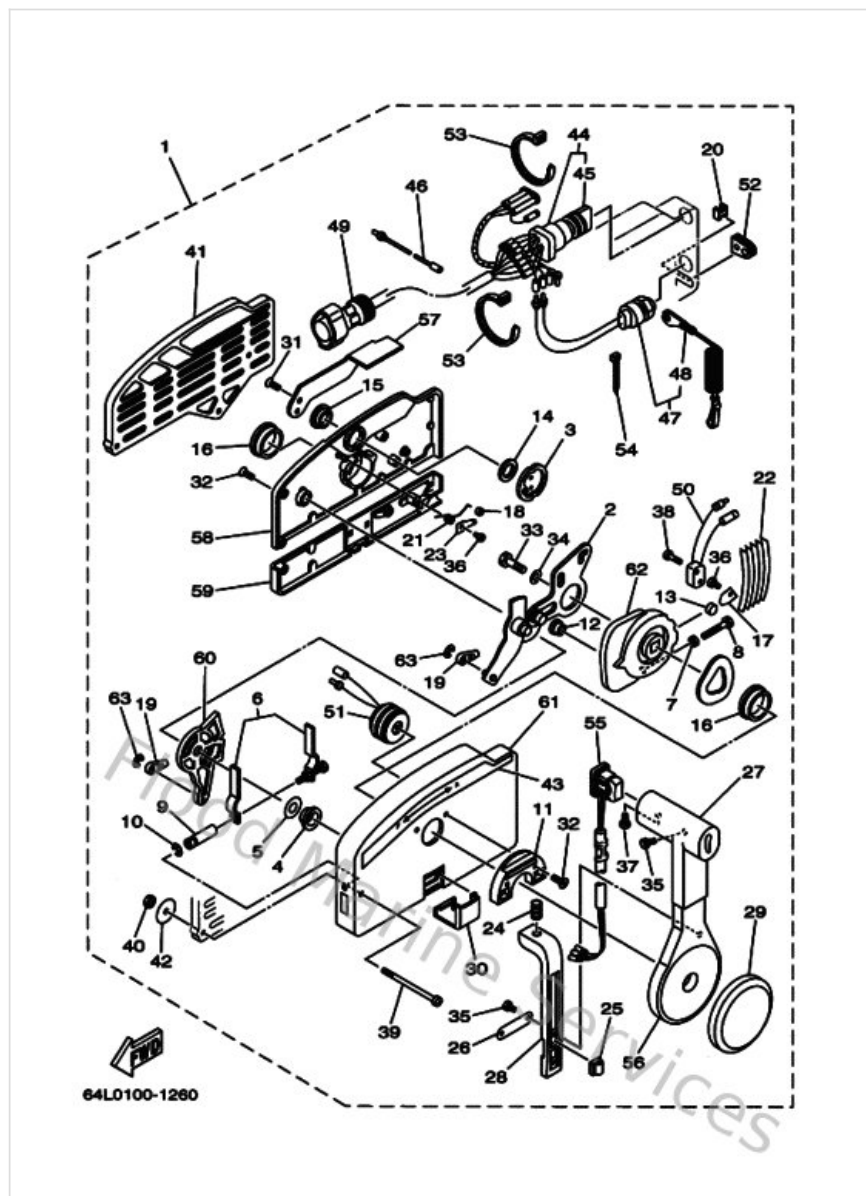
| Ref | Part | |
|-----|--|-------------------------|
| 48 | 69A4381G0000 Pin 1 | Buy now |
| 51 | 69A4384H0000 Spring | Buy now |
| 52 | 936061408100 Pin,dowel(296) | Buy now |
| 53 | 913170502500 Bolt, socket | Buy now |
| 54 | 69A438160000 Filter 1 | Buy now |
| 55 | N35438621000 O-ring | Buy now |
| 56 | 69A231290000 Gasket, drain plug | Buy now |
| 57 | 69A438780000 Bolt, socket | Buy now |
| 58 | 69A438800000 Motor assembly | Buy now |
| 59 | 65W438040000 Stator assembly | Buy now |
| 60 | 65W438050000 Armature assembly | Buy now |
| 61 | 65W438690000 O-ring | Buy now |
| 62 | 65W4386K0000 Spring, brush | Buy now |
| 63 | 65W438820000 Oil seal | Buy now |
| 64 | 69A438810000 Frame, End | Buy now |

Power Trim & Tilt Assy 1



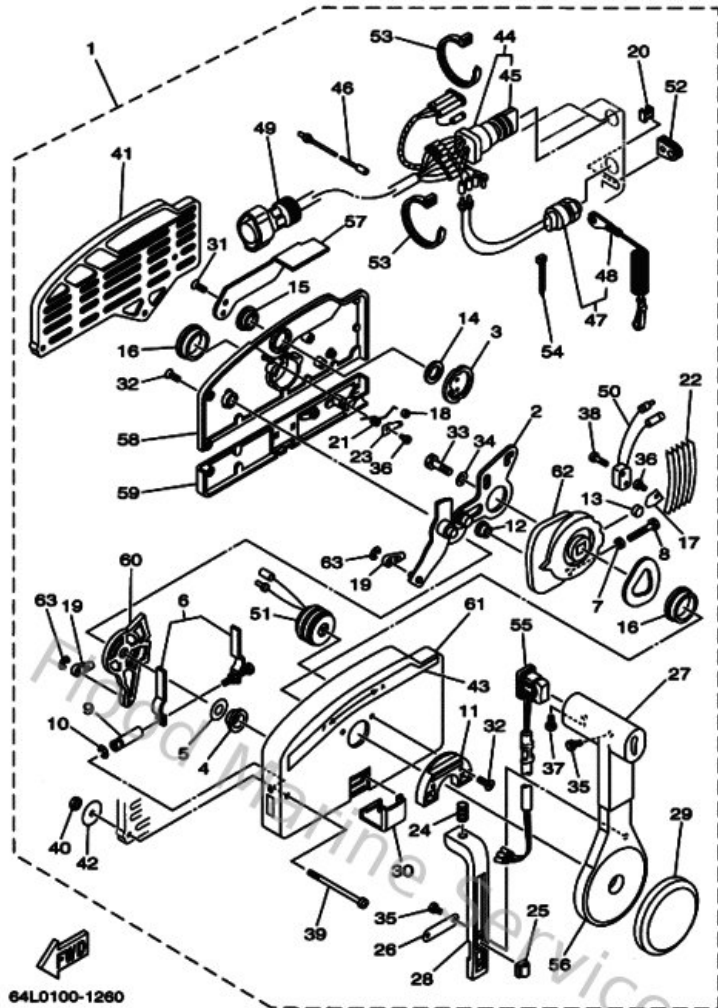
| Ref | Part | |
|-----|---|-------------------------|
| 65 | 65W438870000 Bolt, screw | Buy now |
| 66 | 65W438920000 Brush 2 | Buy now |
| 67 | 65W438910000 Brush 1 | Buy now |
| 68 | 65W4380F0000 Plate, brush holder | Buy now |
| 69 | 65W438790000 Screw, with washer | Buy now |
| 70 | 65W4388E0000 Bolt | Buy now |

Remote Control Assy 1



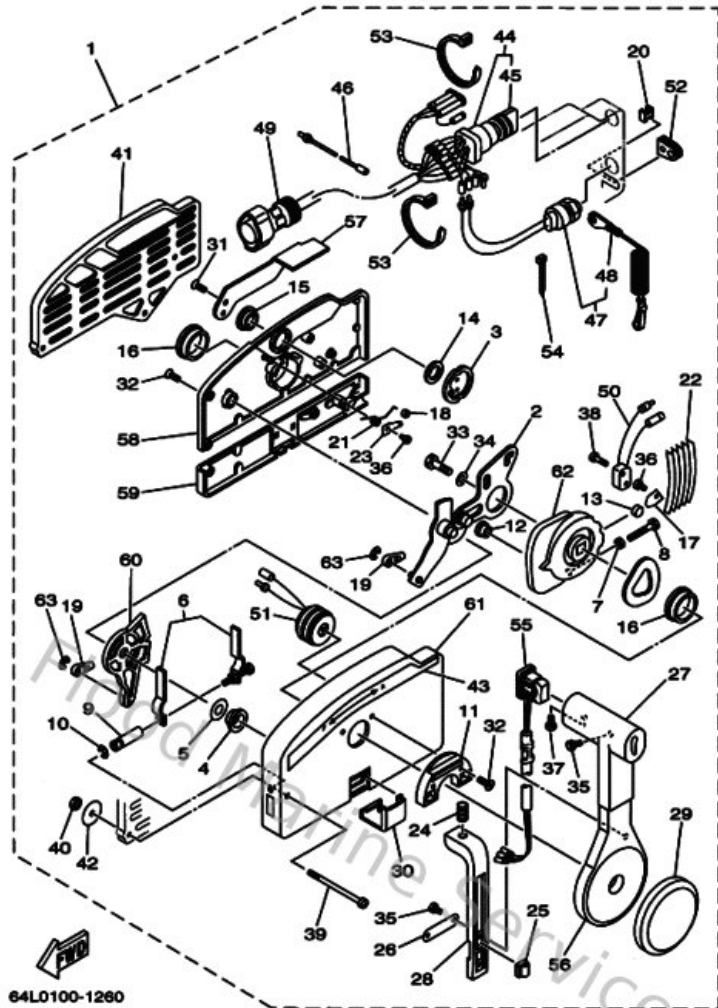
| Ref | Part | |
|-----|--|-------------------------|
| 1 | 703482051600 Remote control assembly (10p, ptt) | Buy now |
| 2 | 703482610100 Arm, throttle | Buy now |
| 3 | 703481530000 Shaft, free accel. | Buy now |
| 4 | 703482350000 Bushing | Buy now |
| 5 | 703482680000 Spacer 3 | Buy now |
| 6 | 703482640000 Throttle, friction | Buy now |
| 7 | 953800560000 Nut, hexagon (663) | Buy now |
| 9 | 703482650000 Shaft Friction | Buy now |
| 10 | 934300602400 Circlip (701) | Buy now |
| 11 | 703482450000 Plate, lock | Buy now |
| 12 | 703482520000 Roller, cam | Buy now |
| 13 | 701482480000 Roller, free accel | Buy now |
| 14 | 703481980000 Washer, wave 3 | Buy now |
| 15 | 703482430000 Bushing 3 | Buy now |
| 16 | 703482360000 Bushing | Buy now |

Remote Control Assy 1



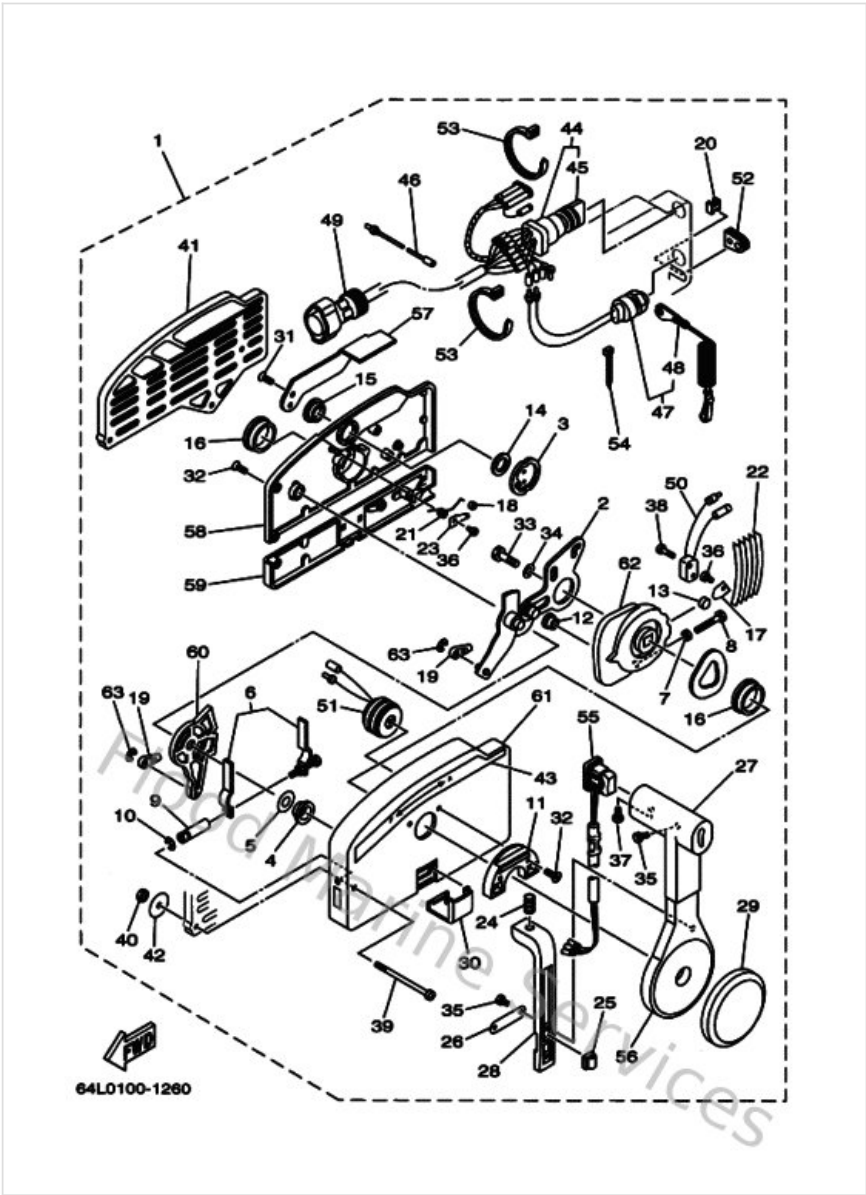
| Ref | Part | |
|-----|---|-------------------------|
| 17 | 703481890000 Retainer | Buy now |
| 18 | 703482340000 Roller, detent | Buy now |
| 19 | 703483450100 Cable end, remote control 2 | Buy now |
| 20 | 703483580000 Anchor, cable | Buy now |
| 21 | 703482440000 Spring, free accel. | Buy now |
| 22 | 703482380000 Spring, detent | Buy now |
| 23 | 703482460000 Spacer 1 | Buy now |
| 24 | 703482270000 Spring, neutral lock | Buy now |
| 25 | 703825940000 Clamp | Buy now |
| 26 | 703482260000 Plate, stopper | Buy now |
| 27 | 703482220000 Grip, control lever | Buy now |
| 28 | 703482230000 Lock, neutral | Buy now |
| 29 | 703482250000 Cover | Buy now |
| 30 | 703482190000 Cover, lead | Buy now |
| 31 | 703482810000 Screw, flat head | Buy now |

Remote Control Assy 1



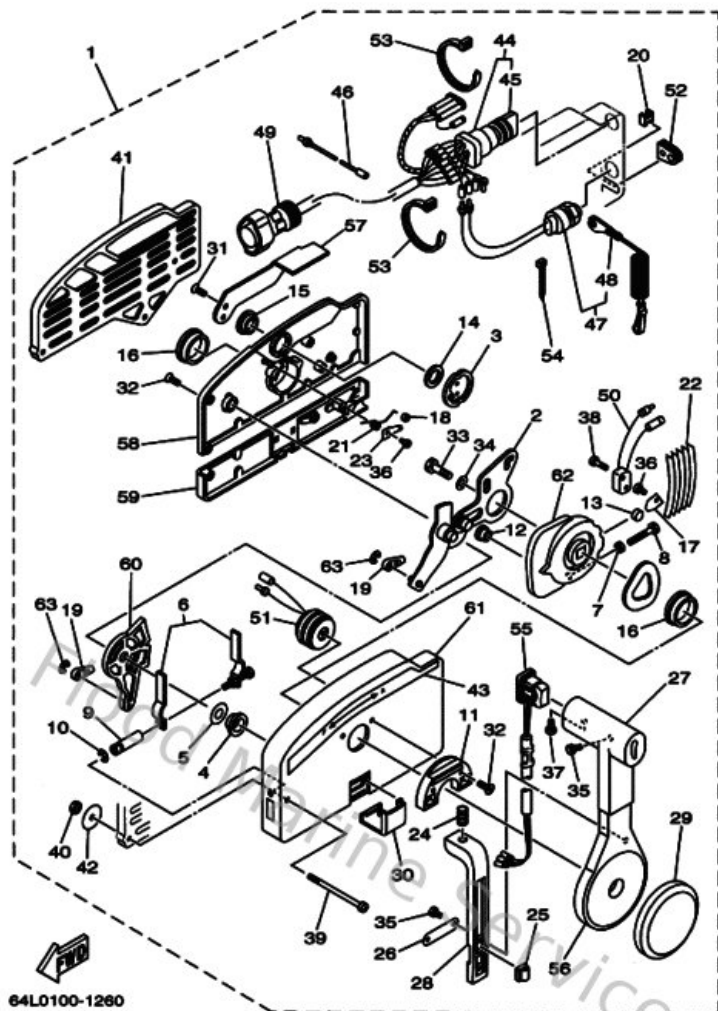
| Ref | Part | |
|-----|--|-------------------------|
| 32 | 703482820000 Screw | Buy now |
| 33 | 970950803000 Bolt, hexagon (fj1) | Buy now |
| 34 | 929900860000 Washer, plain (663) | Buy now |
| 35 | 985800401000 Screw, pan head (e56) | Buy now |
| 36 | 985800400600 Screw, pan head (7h3) | Buy now |
| 37 | 985800501000 Screw, pan head (62x) | Buy now |
| 38 | 985800301500 Screw, pan head (n151) | Buy now |
| 39 | 703482911000 Screw | Buy now |
| 40 | 953800660000 Nut (661) | Buy now |
| 41 | 703482931000 Spacer, remote control | Buy now |
| 42 | 701482870000 Washer 1 | Buy now |
| 43 | 703482150000 Graphic | Buy now |
| 44 | 703825104200 Main switch assembly | Buy now |
| 45 | 676825770000 Cap, key | Buy now |
| 46 | 703825310000 Wire, lead | Buy now |

Remote Control Assy 1



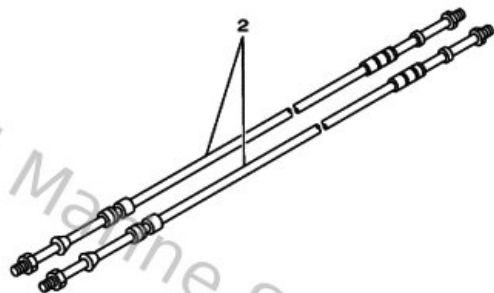
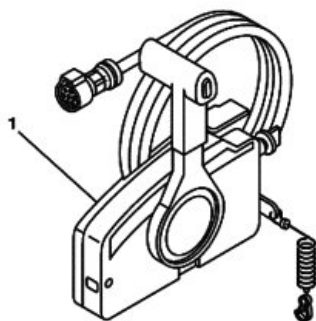
| Ref | Part | |
|-----|---|-------------------------|
| 47 | 688825750100 Engine stop switch assembly | Buy now |
| 48 | 682825560000 Lanyard, stop switch | Buy now |
| 49 | 6888258A2000 10p main harness mec 2m (6ft) | Buy now |
| 50 | 703825400000 Neutral switch assembly | Buy now |
| 51 | 703833830200 Buzzer | Buy now |
| 52 | 703482840000 Grommet | Buy now |
| 53 | 703825910000 Band | Buy now |
| 54 | 703825920000 Band | Buy now |
| 55 | 703825630200 Trim & tilt switch assembly | Buy now |
| 56 | 703482210000 Grip | Buy now |
| 57 | 703481520000 Knob, free accel | Buy now |
| 58 | 703482120000 Rear housing | Buy now |
| 59 | 703482130000 Back, panel | Buy now |
| 60 | 703482710000 Arm, shift | Buy now |
| 61 | 703482110100 Housing,1 | Buy now |

Remote Control Assy 1



| Ref | Part | |
|-----|--|-------------------------|
| 62 | 703482320000 Drive gear | Buy now |

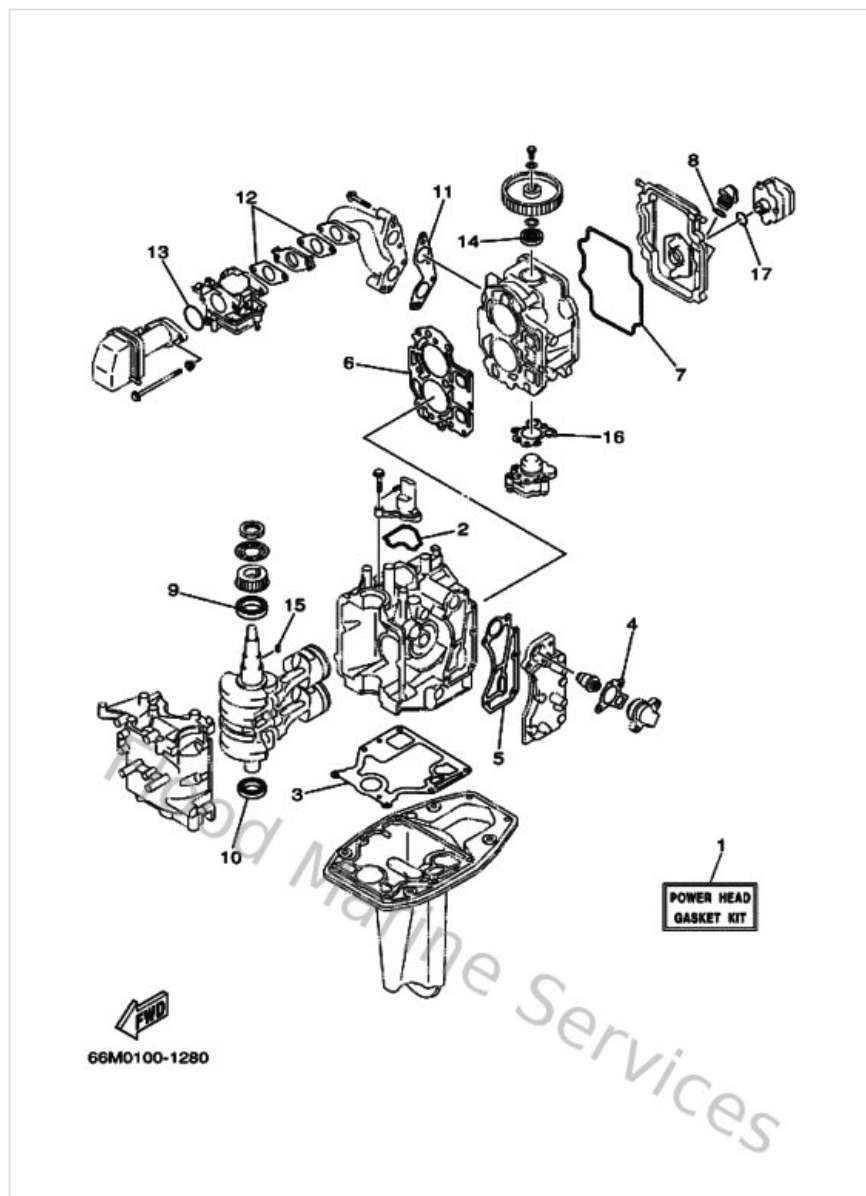
Remote Control Box



67M0100-8280

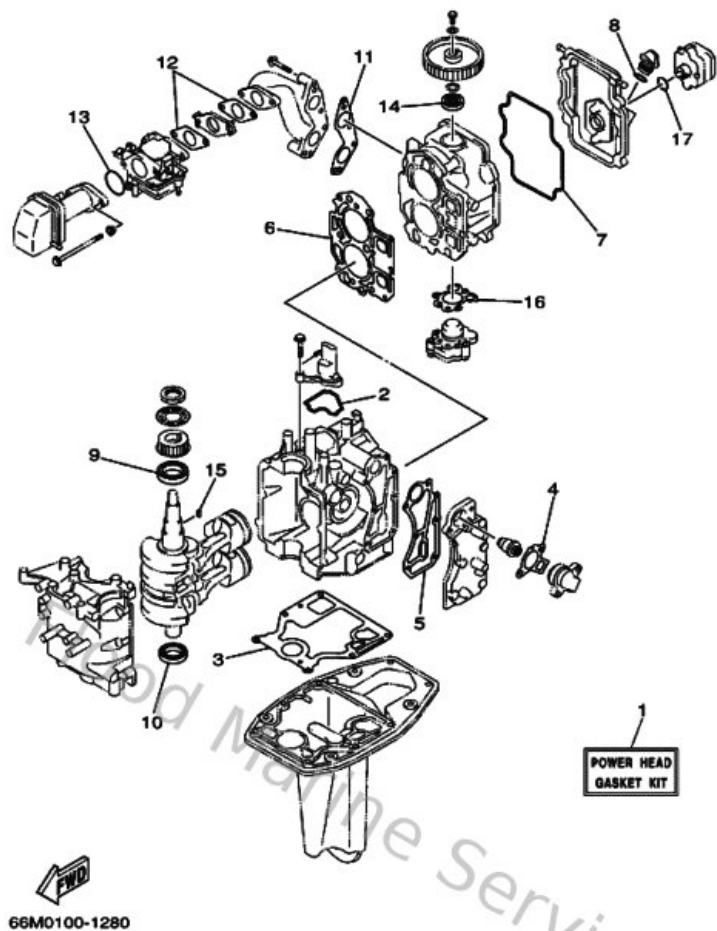
| Ref | Part | |
|-----|--|-------------------------|
| 1 | 703482051600 Remote control assembly (10p, ptt) | Buy now |
| 2 | 701483108000 Cable, Remote Control L=10F | Buy now |

Repair Kit 1



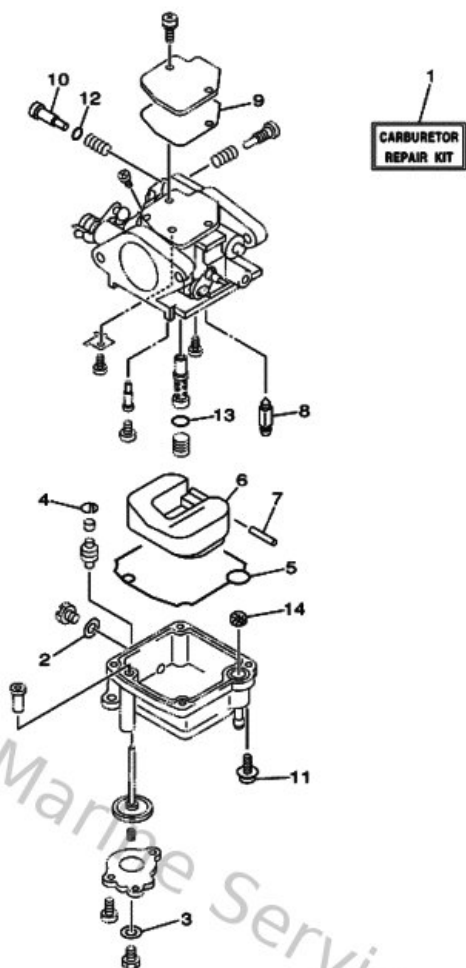
| Ref | Part | |
|-----|---|-------------------------|
| 1 | 66MW00010100 Power head gasket kit | Buy now |
| 2 | 66M113570000 Seal, cylinder 3 | Buy now |
| 3 | 66M113510000 Gasket, cylinder | Buy now |
| 4 | 62Y124140000 Gasket, cover | Buy now |
| 5 | 66M411140100 Gasket, exhaust outer cover | Buy now |
| 6 | 66M111810000 Gasket, cylinder head 1 | Buy now |
| 7 | 66M113560000 Seal, cylinder 2 | Buy now |
| 8 | 932102480000 O-ring | Buy now |
| 9 | 9310235M5100 Oil seal | Buy now |
| 10 | 9310225M5200 Oil seal | Buy now |
| 11 | 66M136450000 Gasket, manifold 1 | Buy now |
| 12 | 66M136460000 Gasket, manifold 2 | Buy now |
| 13 | 9321035M8600 O-ring(612) | Buy now |
| 14 | 9310218M2100 Oil seal (6g8) | Buy now |
| 15 | 9028003M0100 Key woodruff 146115450000 | Buy now |

Repair Kit 1



| Ref | Part | |
|-----|--|-------------------------|
| 16 | 66M133291000 Gasket, pump cover | Buy now |
| 17 | 9321020M6500 O-ring | Buy now |

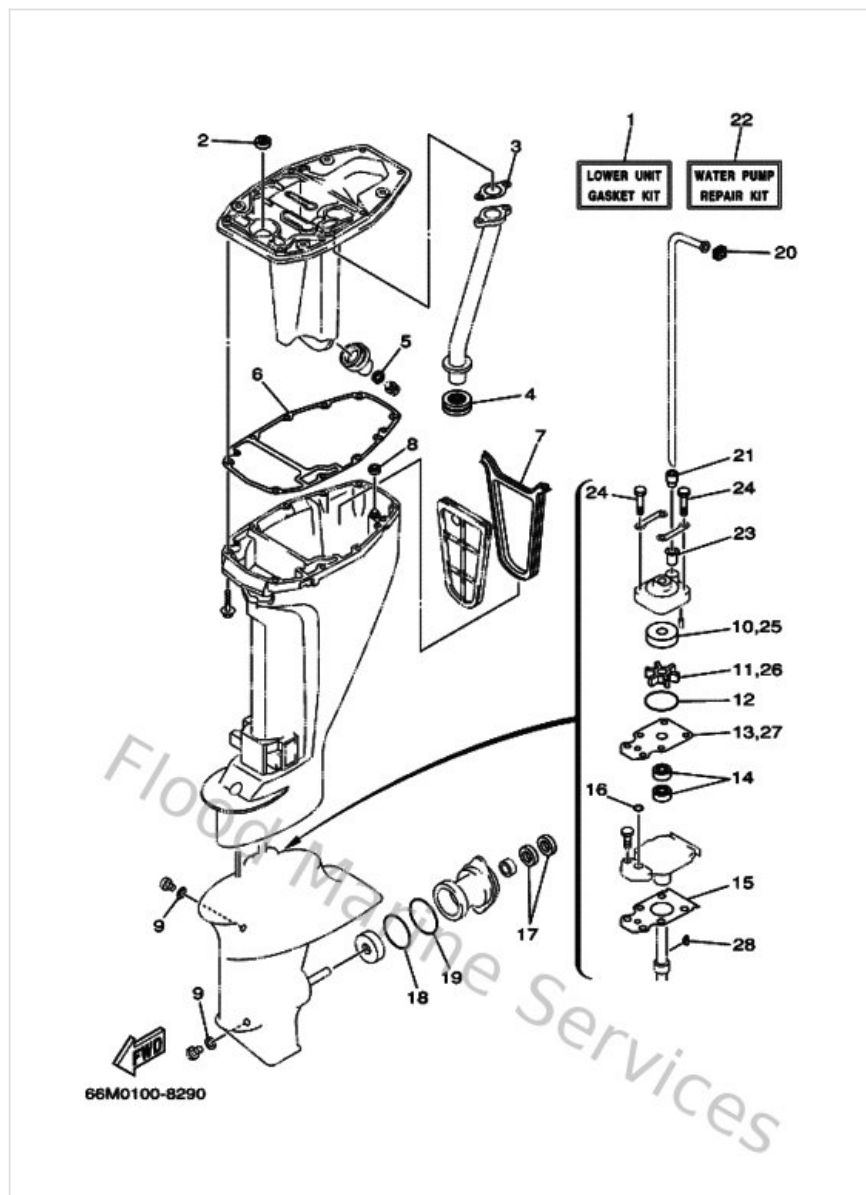
Repair Kit 2



66M0100-8280

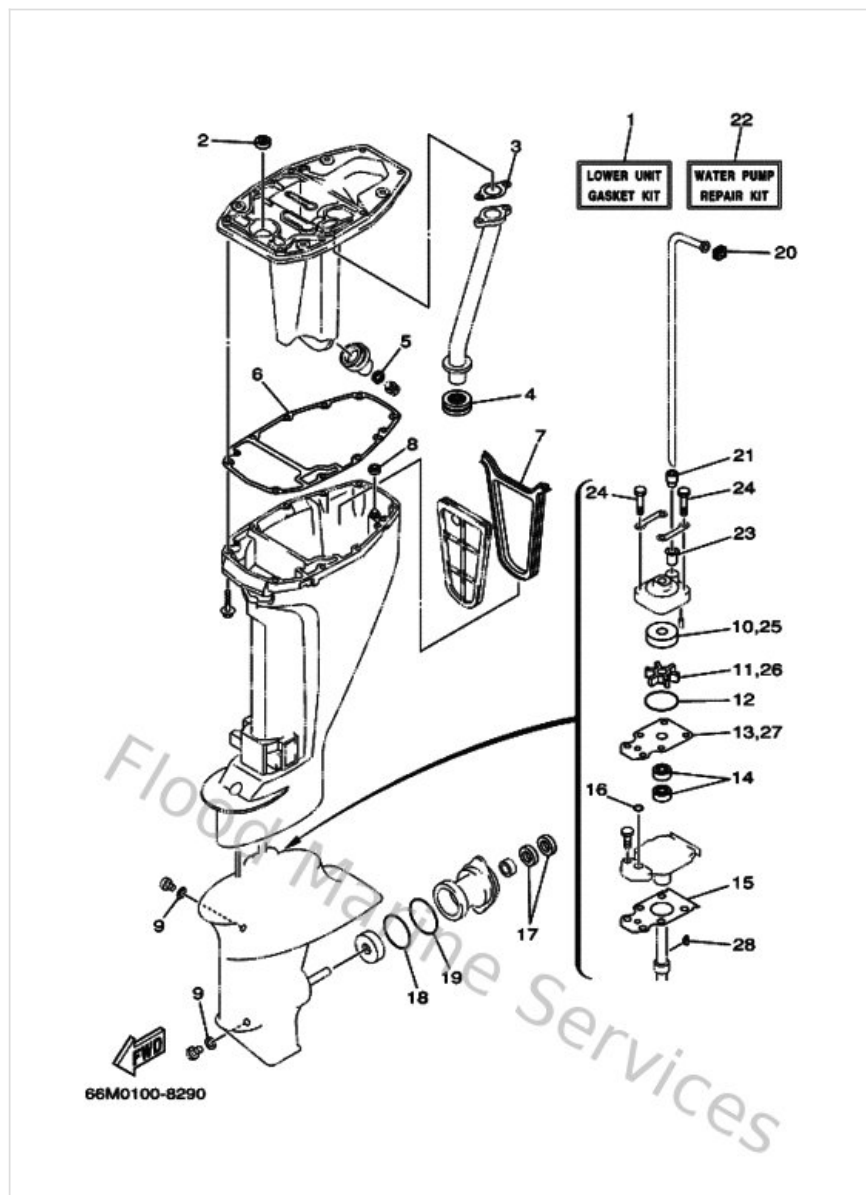
| Ref | Part | |
|-----|---|-------------------------|
| 1 | 66MW00930000 Carburetor repair kit | Buy now |
| 2 | 66M143980000 Gasket | Buy now |
| 3 | 6L2143980000 Gasket | Buy now |
| 4 | 66M143770000 Stopper | Buy now |
| 5 | 66M143840000 Gasket, float chamber | Buy now |
| 6 | 6L2143850000 Float | Buy now |
| 7 | 6E5143860100 Pin, float | Buy now |
| 8 | 6L2143920000 Valve, needle | Buy now |
| 9 | 62Y143990000 Gasket | Buy now |
| 10 | 5H0143230000 Pilot screw set | Buy now |
| 11 | 979800411200 Screw, pan head (686) | Buy now |
| 12 | 62Y143970000 O-ring | Buy now |
| 13 | 6F5143970000 O-ring | Buy now |
| 14 | 66M148270000 Filter | Buy now |

Repair Kit 3



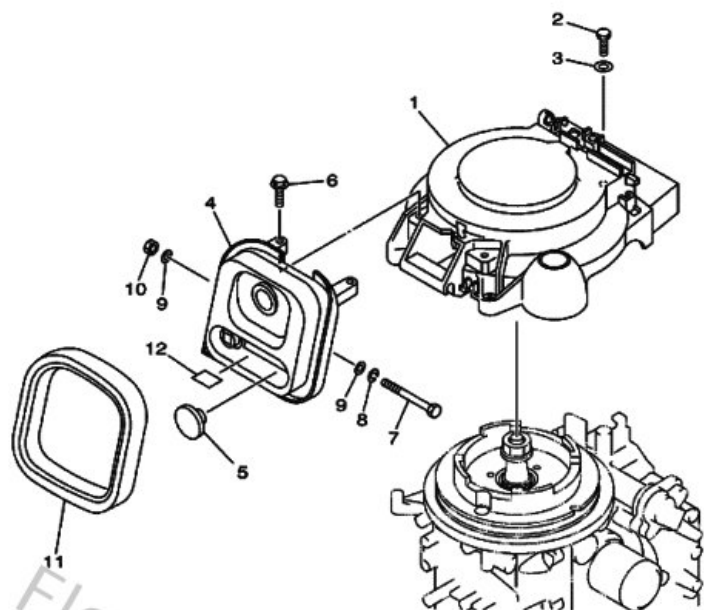
| Ref | Part | |
|-----|--|-------------------------|
| 1 | 66MW00012000 Lower Unit Gasket Kit | Buy now |
| 2 | 9310112M6300 Oil seal | Buy now |
| 3 | 66M411330000 Gasket, exhaust manifold 1 | Buy now |
| 4 | 66M411380000 Seal, ext. 1 | Buy now |
| 5 | 9043014M0900 Gasket | Buy now |
| 6 | 66M451130000 Gasket, upper casing | Buy now |
| 7 | 66M451150000 Gasket, upper casing | Buy now |
| 8 | 66M451280000 Seal 2 | Buy now |
| 9 | 904300802000 Gasket | Buy now |
| 10 | 63V443220000 Insert, cartridge | Buy now |
| 11 | 63V443520100 Impeller | Buy now |
| 12 | 932104439800 O-ring(55x) | Buy now |
| 13 | 63V443230000 Outer plate, cartridge | Buy now |
| 14 | 931022048400 Oil seal | Buy now |
| 15 | 63V45315A000 Packing, lower casing | Buy now |

Repair Kit 3



| Ref | Part | |
|-----|--|-------------------------|
| 16 | 9321006ME600 O-ring | Buy now |
| 17 | 931011705400 Oil seal (17x30x6-650) | Buy now |
| 18 | 9321057M0900 O-ring (683) | Buy now |
| 19 | 9321056M8000 O-ring(6j8) | Buy now |
| 20 | 63V443651000 Damper, water seal 1 | Buy now |
| 21 | 63V443680000 Rubber, water seal 4 | Buy now |
| 22 | 63VW00780200 Water pump repair kit | Buy now |
| 23 | 647443660000 Damper, water seal 2 | Buy now |
| 24 | 970800804500 Bolt, hexagon | Buy now |
| 28 | 664443380000 Key, woodruff | Buy now |

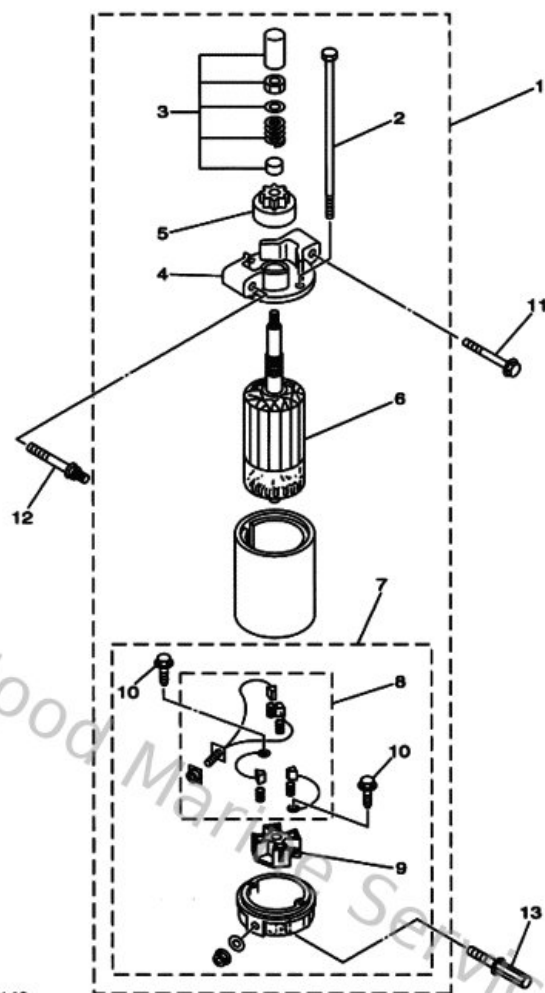
Starter



FWD
69A0100-0110

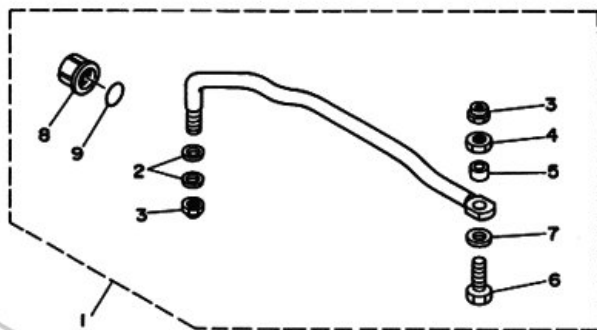
| Ref | Part | |
|-----|---|-------------------------|
| 1 | 66M157111000 Case, starter | Buy now |
| 2 | 970950602000 Bolt(7u8) | Buy now |
| 3 | 929950660000 Washer, plain (646) | Buy now |
| 4 | 66M157581000 Guide, Rope | Buy now |
| 5 | 6G1427250000 Grommet | Buy now |
| 6 | 9011906M5900 Bolt, with washer | Buy now |
| 7 | 970950609000 Bolt(62y) | Buy now |
| 8 | 929950610000 Washer(6a1) | Buy now |
| 9 | 9020106M0500 Washer, plate(6e3) | Buy now |
| 10 | 953800670000 Nut | Buy now |
| 11 | 66M157620000 Seal Rubber 2 | Buy now |
| 12 | 66M843420000 Seat, Emblem | Buy now |

Starting Motor



| Ref | Part | |
|-----|---|-------------------------|
| 1 | 66M818000100 Starting motor assembly | Buy now |
| 2 | 65W818260000 Bolt | Buy now |
| 3 | 65W818570100 Retainer | Buy now |
| 4 | 66M818300000 Front bracket assembly | Buy now |
| 5 | 65W818070000 Gear assembly, starting motor | Buy now |
| 6 | 65W818500100 Armature assembly | Buy now |
| 7 | 66M818200000 Rear bracket assembly | Buy now |
| 8 | 65W818010000 Brush set | Buy now |
| 9 | 65W818400000 Brush holder assembly | Buy now |
| 10 | 65W818250000 Screw | Buy now |
| 11 | 9011908M3900 Bolt, with washer | Buy now |
| 12 | 9010908M7800 Bolt | Buy now |
| 13 | 9010908M8500 Bolt | Buy now |

Steering Guide

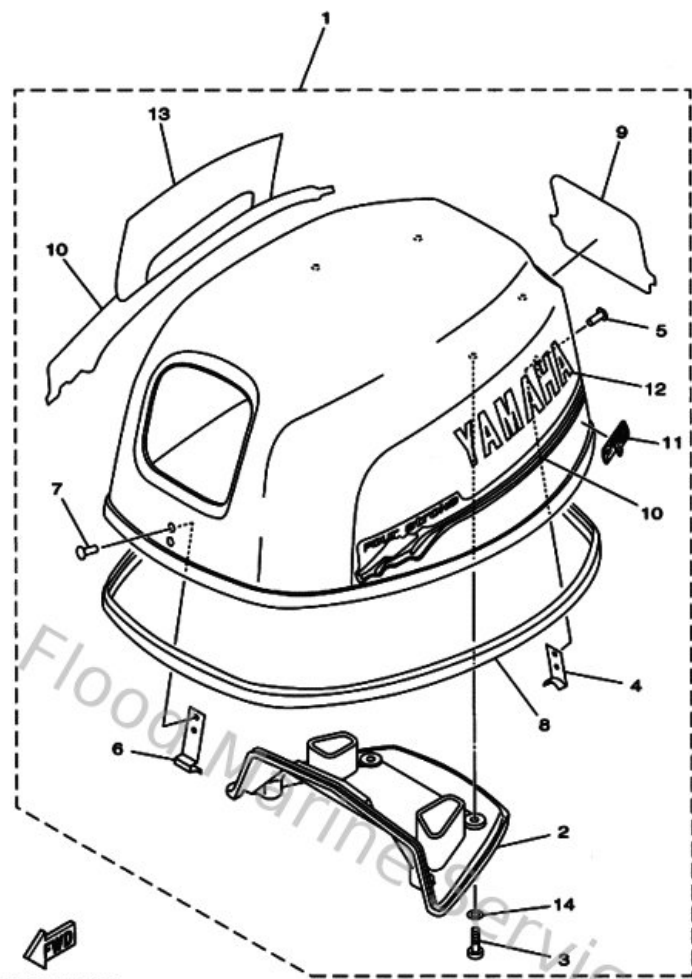


63V0100-5210

Flood Marine Services

| Ref | Part | |
|-----|---|-------------------------|
| 1 | 63V613500000 Steering guide attachment kit | Buy now |
| 2 | 9020110M2000 Washer, plate (663) | Buy now |
| 3 | 9018509M0100 Nut, nylon (663) | Buy now |
| 4 | 9017009M0300 Nut (689) | Buy now |
| 5 | 9038710M4200 Coller (688) | Buy now |
| 6 | 6E5613550000 Bolt | Buy now |
| 7 | 9020110M6300 Washer, plate | Buy now |
| 8 | 6E5431450100 Cap, clamp bracket | Buy now |
| 9 | 932101627500 O-ring | Buy now |

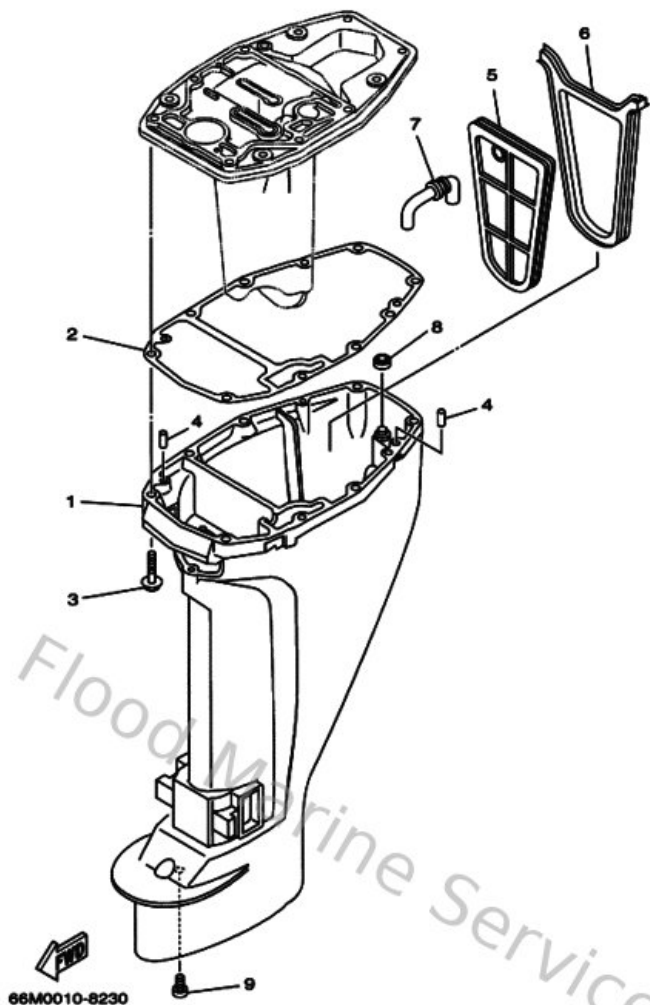
Top Cowling



69B0010-0010

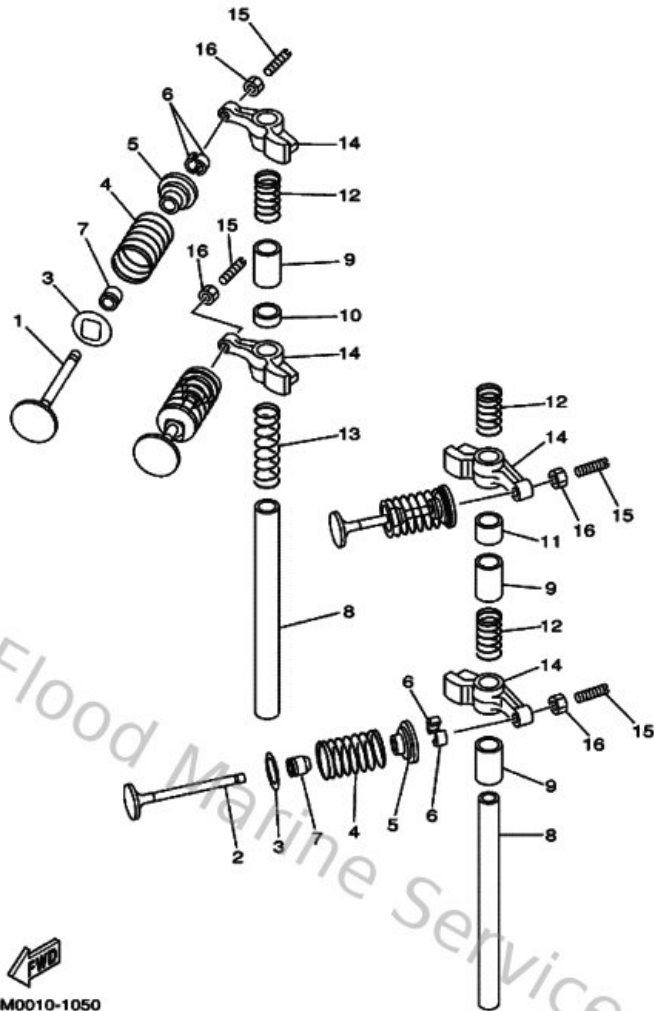
| Ref | Part | |
|-----|---|-------------------------|
| 2 | 66M426130000 Molding Air Duct | Buy now |
| 3 | 977806052000 Screw, tapping(6k8) | Buy now |
| 4 | 6E0426510200 Hook | Buy now |
| 5 | 9026604M0400 Rivet(6e7) | Buy now |
| 6 | 6E7426520000 Hook | Buy now |
| 8 | 66M426150000 Seal | Buy now |
| 9 | 6AG426772000 Graphic, front | Buy now |
| 11 | 69A426750000 Graphic, side 1 | Buy now |
| 12 | 66M426811000 Emblem, yamaha | Buy now |
| 13 | 66M426821000 Emblem, yamaha | Buy now |
| 14 | 9020205M3800 Washer, plate(6l2) | Buy now |

Upper Casing



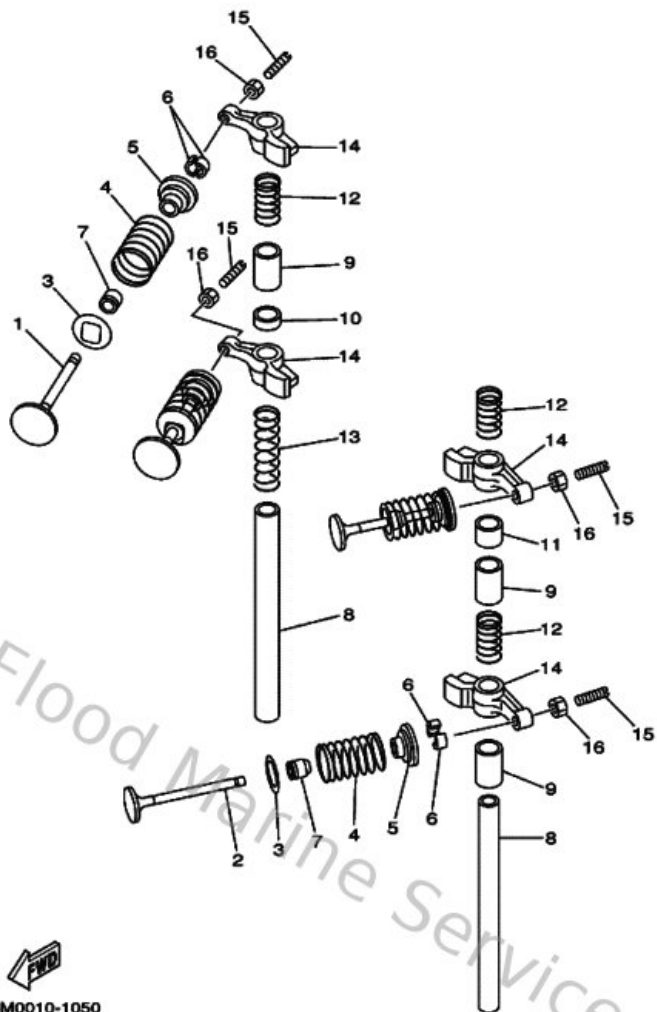
| Ref | Part | |
|-----|---|-------------------------|
| 1 | 66M45111004D Casing, upper | Buy now |
| 2 | 66M451130000 Gasket, upper casing | Buy now |
| 3 | 975750854500 Bolt, hexagon w/w deep recess | Buy now |
| 4 | 936061201900 Pin, dowel (614) | Buy now |
| 5 | 66M451260000 Plate, Seal Damper | Buy now |
| 6 | 66M451150000 Gasket, upper casing | Buy now |
| 7 | 66M451360000 Pipe | Buy now |
| 8 | 66M451280000 Seal 2 | Buy now |
| 9 | 9015706M0600 Screw, pan head(6m7) | Buy now |

Valve



| Ref | Part | |
|-----|---|-------------------------|
| 1 | 66M121110000 Valve, intake | Buy now |
| 2 | 66M121210000 Valve, exhaust | Buy now |
| 3 | 66M121160000 Seat, valve spring | Buy now |
| 4 | 66M121130000 Spring, valve inner | Buy now |
| 5 | 30X121170000 Retainer, valve spring | Buy now |
| 6 | 30X121180000 Cotter, valve | Buy now |
| 7 | 6EEE21190000 Seal, valve stem | Buy now |
| 8 | 66M121460000 Shaft, rocker | Buy now |
| 9 | 9038713M5600 Collar (6g8) | Buy now |
| 10 | 903871300100 Collar | Buy now |
| 11 | 903871300200 Collar | Buy now |
| 12 | 9050112M4000 Spring, compression (6g8) | Buy now |
| 13 | 9050112M4100 Spring Compression (6G8) | Buy now |
| 14 | 66M121511000 Arm, Valve Rocker | Buy now |
| 15 | 62Y121590000 Screw Valve Adjusting | Buy now |

Valve



| Ref | Part | |
|-----|---|-------------------------|
| 16 | 62Y121580000 Nut, lock | Buy now |

Disclaimer

This document is provided for convenience only. It is **not** an official Yamaha publication and is **not supplied, endorsed, or approved** by Yamaha Motor Co., Ltd.

Reasonable efforts are made to keep information accurate; however diagrams, part references, supersessions, descriptions, and applicability may contain errors or omissions. Specifications and part availability may change without notice.

You are responsible for confirming the correct parts for your engine (including model code, year, serial range, and any superseded part numbers) before ordering or fitting.