



# Yamaha F15AMH 2003

## Parts Manual

[www.floodmarine.co.uk](http://www.floodmarine.co.uk)

+44 2882 246 539

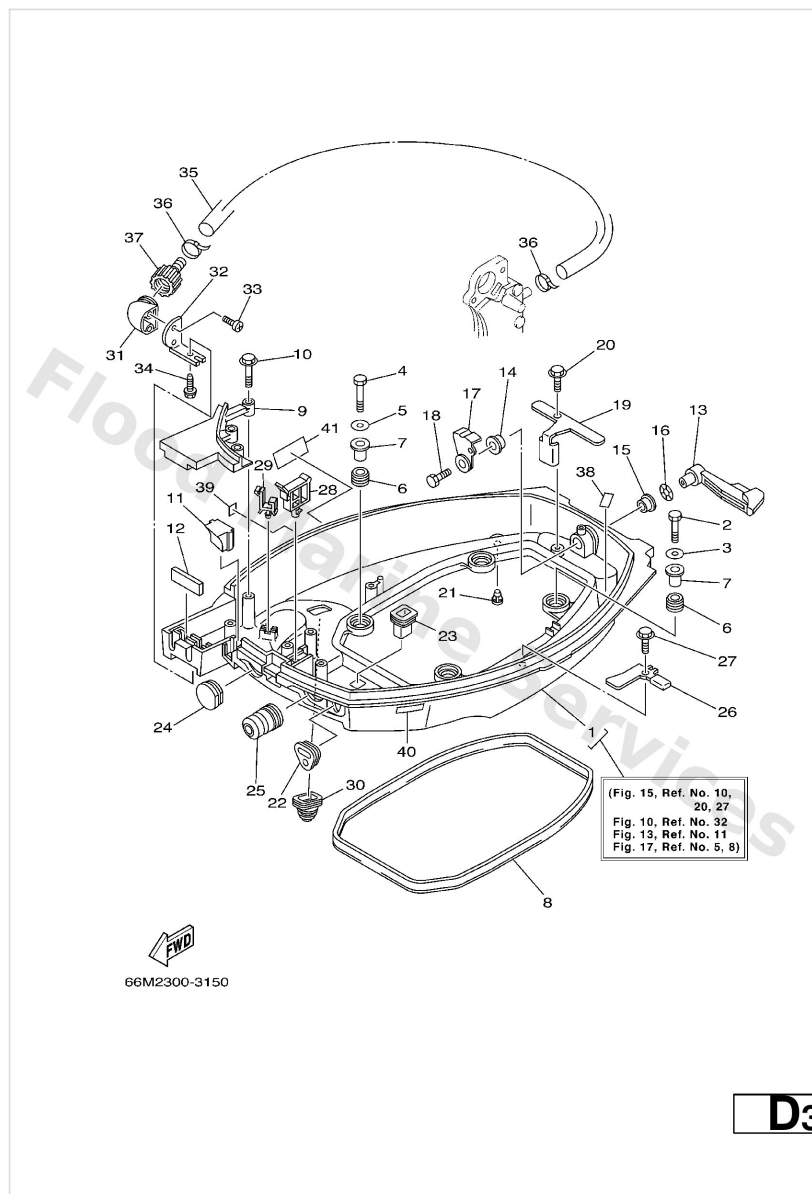
Authorised Yamaha Dealers



# Contents

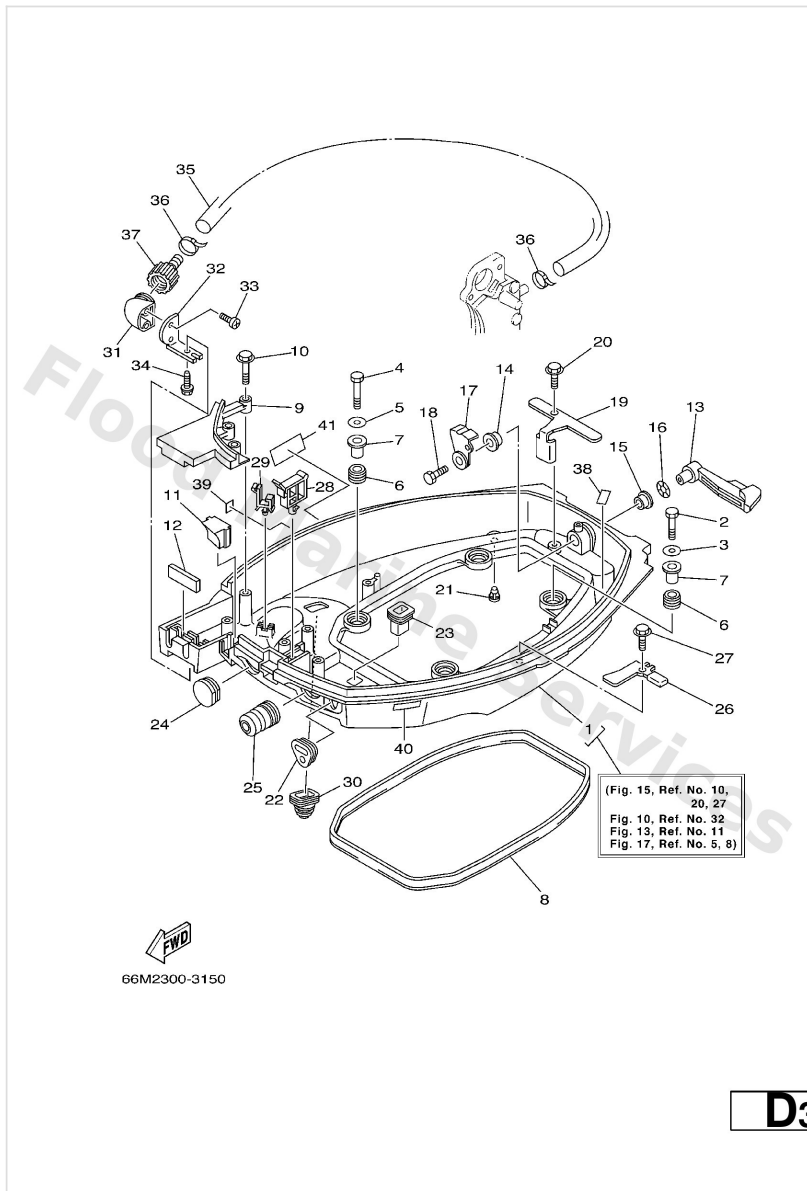
<b>BOTTOM COWLING</b>	3
<b>BRACKET 1</b>	6
<b>BRACKET 2</b>	10
<b>CARBURETOR</b>	12
<b>CONTROL</b>	16
<b>CRANKSHAFT. PISTON</b>	19
<b>CYLINDER. CRANKCASE 1</b>	21
<b>CYLINDER. CRANKCASE 2</b>	23
<b>ELECTRICAL 1</b>	24
<b>ELECTRICAL 2</b>	26
<b>FUEL</b>	28
<b>FUEL TANK 1</b>	31
<b>FUEL TANK 2</b>	32
<b>GENERATOR</b>	33
<b>INTAKE</b>	34
<b>LOWER CASING. DRIVE 1</b>	36
<b>LOWER CASING. DRIVE 2</b>	41
<b>OIL PAN</b>	43
<b>OIL PUMP</b>	45
<b>REMOTE CONTROL ASSY</b>	47
<b>REMOTE CONTROL ATTACHMENT</b>	52
<b>REMOTE CONTROL BOX</b>	54
<b>REPAIR KIT 1</b>	55
<b>REPAIR KIT 2</b>	57
<b>REPAIR KIT 3</b>	58
<b>STARTER</b>	60
<b>STARTING MOTOR</b>	63
<b>STEERING</b>	64
<b>STEERING GUIDE</b>	67
<b>TOP COWLING</b>	68
<b>UPPER CASING</b>	70
<b>VALVE</b>	71

# Bottom Cowling



Ref	Part	
1	<a href="#">66M-42710-04-4D</a> Bottom Cowling assembly WITH TAPPING BOLT	<a href="#">Buy now</a>
2	<a href="#">97095-06035</a> Bolt(j52)	<a href="#">Buy now</a>
3	<a href="#">92995-06600</a> Washer, plain (646)	<a href="#">Buy now</a>
4	<a href="#">97095-06025</a> Bolt	<a href="#">Buy now</a>
6	<a href="#">90480-15M31</a> Grommet (6g1)	<a href="#">Buy now</a>
7	<a href="#">90387-06034</a> Collar (6g1)	<a href="#">Buy now</a>
8	<a href="#">66M-42716-00</a> Rubber, seal 1	<a href="#">Buy now</a>
9	<a href="#">66M-42738-00-4D</a> Plate, fitting	<a href="#">Buy now</a>
10	<a href="#">90109-06M82</a> Bolt	<a href="#">Buy now</a>
11	<a href="#">66M-42725-00</a> Grommet	<a href="#">Buy now</a>
11	<a href="#">66M-42725-10</a> Grommet	<a href="#">Buy now</a>
11	<a href="#">66M-42725-20</a> Grommet	<a href="#">Buy now</a>
12	<a href="#">62Y-42727-00</a> Grommet	<a href="#">Buy now</a>
12	<a href="#">65W-42727-00</a> Grommet	<a href="#">Buy now</a>
13	<a href="#">66M-42815-00-4D</a> Lever, clamp 1	<a href="#">Buy now</a>

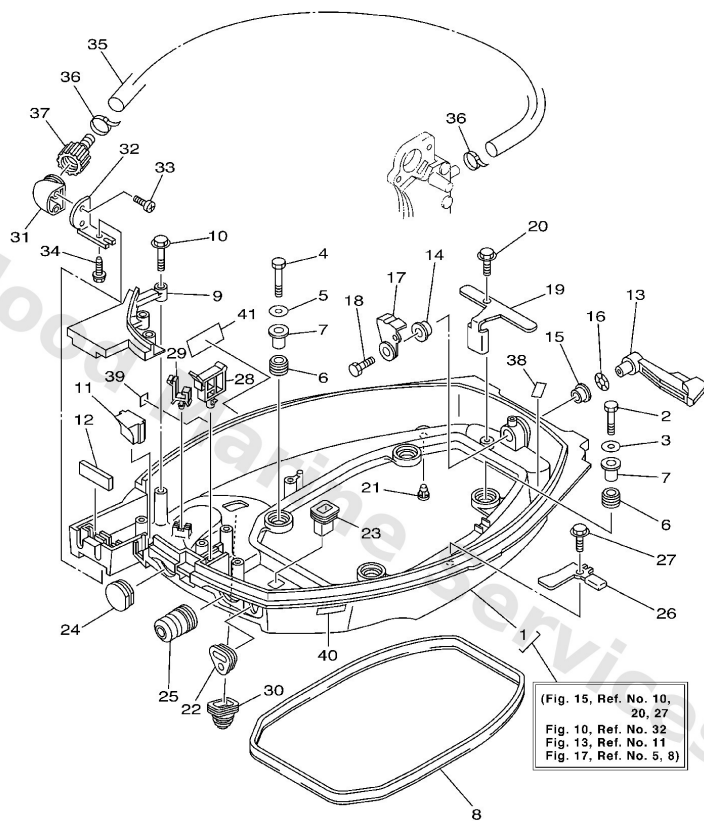
# Bottom Cowling



Ref	Part	
14	<a href="#">90386-12M37</a> Bushing (6f5)	<a href="#">Buy now</a>
15	<a href="#">90386-12MA2</a> Bush	<a href="#">Buy now</a>
16	<a href="#">90206-12052</a> Washer, wave (666)	<a href="#">Buy now</a>
17	<a href="#">6L2-42816-00</a> Lever, clamp	<a href="#">Buy now</a>
18	<a href="#">97095-06012</a> Bolt(gh1)	<a href="#">Buy now</a>
19	<a href="#">66M-42766-00</a> Bracket 2	<a href="#">Buy now</a>
34	<a href="#">90109-06M86</a> Bolt FLUSHING KIT	<a href="#">Buy now</a>
21	<a href="#">6H3-44391-01</a> Nipple, hose	<a href="#">Buy now</a>
22	<a href="#">65W-26326-10</a> Grommet	<a href="#">Buy now</a>
22	<a href="#">66M-26326-00</a> Grommet	<a href="#">Buy now</a>
23	<a href="#">682-42727-00</a> Grommet	<a href="#">Buy now</a>
24	<a href="#">682-42724-00</a> Grommet	<a href="#">Buy now</a>
25	<a href="#">65W-42726-00</a> Grommet	<a href="#">Buy now</a>
25	<a href="#">65W-42726-10</a> Grommet	<a href="#">Buy now</a>
26	<a href="#">66M-42743-00</a> Bracket	<a href="#">Buy now</a>



## Bottom Cowling

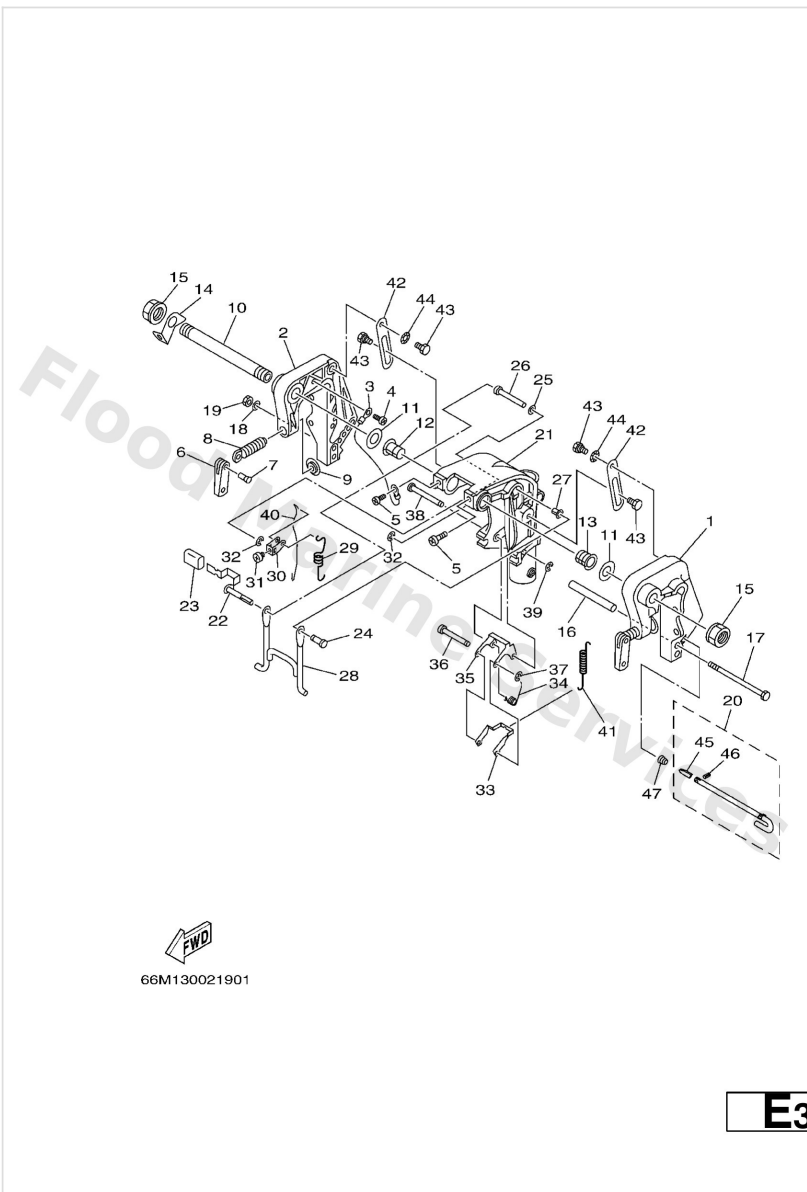


66M2300-3150

D3

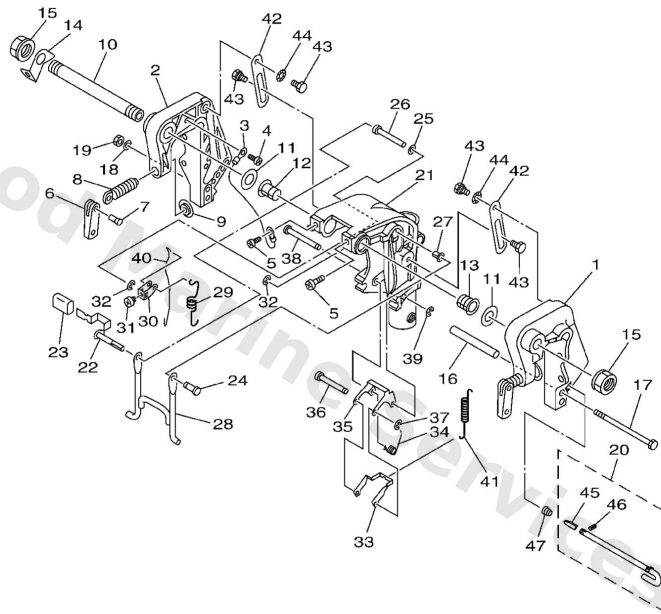
Ref	Part	
28	<a href="#">90465-25M57</a> Clamp(63v)	<a href="#">Buy now</a>
29	<a href="#">90464-09M13</a> Clamp (6h1)	<a href="#">Buy now</a>
30	<a href="#">688-42726-10</a> Grommet FOR FLUSHING KIT	<a href="#">Buy now</a>
31	<a href="#">68T-12572-00</a> Adapter FLUSHING KIT	<a href="#">Buy now</a>
32	<a href="#">69W-12535-00</a> Plate FLUSHING KIT	<a href="#">Buy now</a>
33	<a href="#">90167-06002</a> Screw, tapping FLUSHING KIT	<a href="#">Buy now</a>
35	<a href="#">66M-12481-00</a> Pipe 1 FLUSHING KIT	<a href="#">Buy now</a>
36	<a href="#">90465-11M10</a> Clamp FLUSHING KIT	<a href="#">Buy now</a>
37	<a href="#">6R3-12580-00</a> Joint assembly FLUSHING KIT	<a href="#">Buy now</a>
38	<a href="#">62Y-82377-00</a> Label	<a href="#">Buy now</a>
39	<a href="#">6A1-28176-00</a> Label Caution	<a href="#">Buy now</a>
40	<a href="#">6E3-8257H-00</a> Plate Mark	<a href="#">Buy now</a>
41	<a href="#">6G8-13444-51</a> Mark	<a href="#">Buy now</a>

# Bracket 1



Ref	Part	
1	<a href="#">63V-43111-05-4D</a> Bracket, clamp 1	<a href="#">Buy now</a>
2	<a href="#">63V-43112-06-4D</a> Bracket, clamp 2	<a href="#">Buy now</a>
3	<a href="#">66M-82148-00</a> Wire, lead 4	<a href="#">Buy now</a>
4	<a href="#">97885-06008</a> Screw, pan head(6a3)	<a href="#">Buy now</a>
5	<a href="#">97885-08010</a> Rivet	<a href="#">Buy now</a>
6	<a href="#">6E0-43118-01</a> Handle, transom clamp	<a href="#">Buy now</a>
7	<a href="#">90243-04M01</a> Pin(6a1)	<a href="#">Buy now</a>
8	<a href="#">6E7-43116-00</a> Screw, transom clamp	<a href="#">Buy now</a>
9	<a href="#">648-43114-01</a> Pad, transom clamp	<a href="#">Buy now</a>
10	<a href="#">63W-43131-10</a> Bolt, clamp bracket <b>FOR RIDE GUIDE</b>	<a href="#">Buy now</a>
11	<a href="#">90202-22M54</a> Washer, plate(63v)	<a href="#">Buy now</a>
12	<a href="#">90386-22M94</a> Bush(63v)	<a href="#">Buy now</a>
14	<a href="#">66R-43113-00</a> Plate, clamp bracket	<a href="#">Buy now</a>
15	<a href="#">90185-22043</a> Nut, self-locking	<a href="#">Buy now</a>
16	<a href="#">90387-06M13</a> Collar(6h6)	<a href="#">Buy now</a>

# Bracket 1

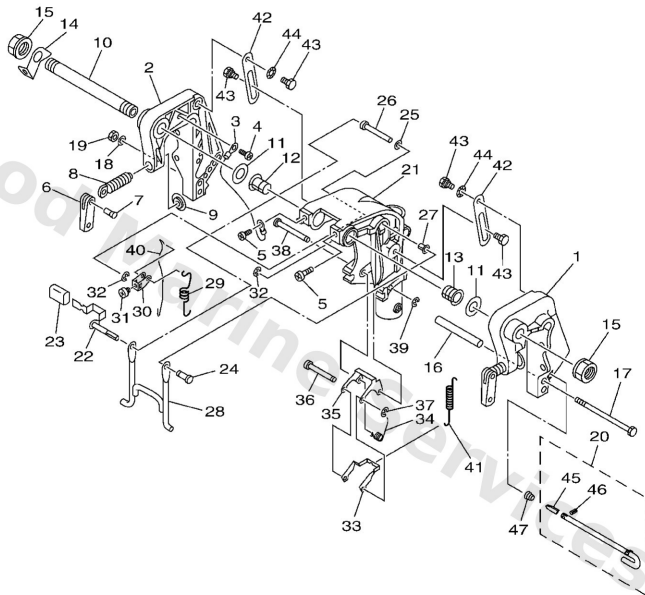


66M130021901

E3

Ref	Part	
17	<a href="#">90101-06M29</a> Bolt, hexagon (682)	<a href="#">Buy now</a>
18	<a href="#">92995-06600</a> Washer, plain (646)	<a href="#">Buy now</a>
19	<a href="#">4316001</a> Tilt Rod assembly	<a href="#">Buy now</a>
19	<a href="#">95380-06700</a> Nut	<a href="#">Buy now</a>
21	<a href="#">63V-43311-03-4D</a> Bracket, swivel 1 S	<a href="#">Buy now</a>
21	<a href="#">66M-43311-10-4D</a> Bracket, swivel 1 L	<a href="#">Buy now</a>
22	<a href="#">66M-43630-01</a> Tilt lever assembly	<a href="#">Buy now</a>
23	<a href="#">682-43318-01</a> Cover	<a href="#">Buy now</a>
24	<a href="#">63V-43191-00</a> Shaft, stopper	<a href="#">Buy now</a>
25	<a href="#">90202-07M60</a> Washer, plate	<a href="#">Buy now</a>
26	<a href="#">90387-07M07</a> Collar	<a href="#">Buy now</a>
27	<a href="#">90386-07M95</a> Bush(63v)	<a href="#">Buy now</a>
28	<a href="#">66M-43350-01</a> Receiver assembly	<a href="#">Buy now</a>
29	<a href="#">90507-20M00</a> Spring, tension(63v)	<a href="#">Buy now</a>
30	<a href="#">63V-43641-01</a> Lever, tilt	<a href="#">Buy now</a>

# Bracket 1



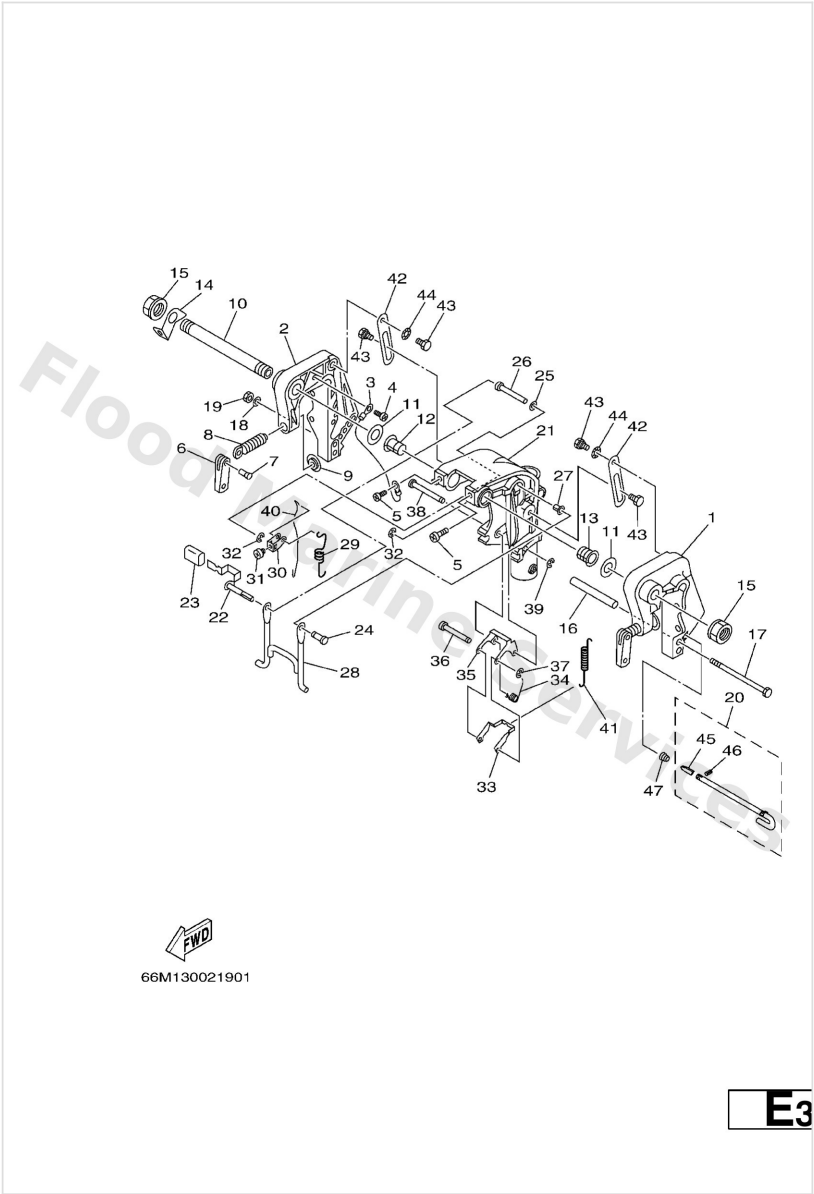
66M130021901

E3

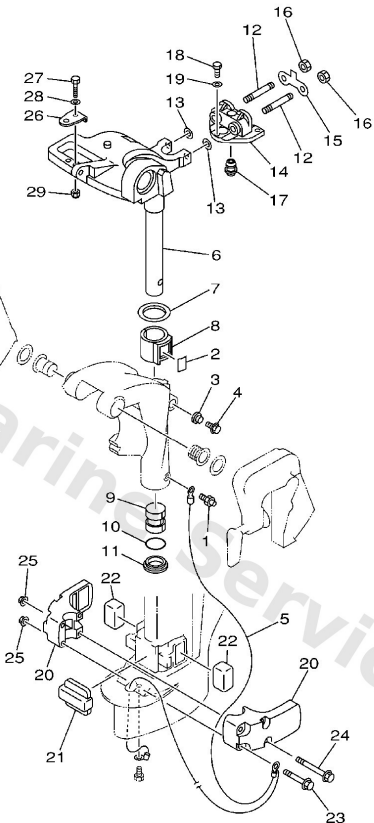
Ref	Part	
31	<a href="#">90157-05014</a> Screw, pan head	<a href="#">Buy now</a>
32	<a href="#">99080-05600</a> Circlip(22k)	<a href="#">Buy now</a>
33	<a href="#">63V-43614-10</a> Plate, tilt lock	<a href="#">Buy now</a>
34	<a href="#">90508-18M41</a> Spring, torsion	<a href="#">Buy now</a>
35	<a href="#">66R-43615-00</a> Plate, tilt lock	<a href="#">Buy now</a>
36	<a href="#">66R-43611-00</a> Shaft, tilt lock	<a href="#">Buy now</a>
37	<a href="#">93430-04M03</a> Circlip (eu0)	<a href="#">Buy now</a>
38	<a href="#">63V-43659-00</a> Shaft, reverse lock	<a href="#">Buy now</a>
40	<a href="#">66R-43617-00</a> Rod, tilt lock	<a href="#">Buy now</a>
41	<a href="#">63V-43656-00</a> Spring, reverse lock 1	<a href="#">Buy now</a>
42	<a href="#">63V-43181-00</a> Lever, tilt stop 1	<a href="#">Buy now</a>
43	<a href="#">90109-06M84</a> Bolt	<a href="#">Buy now</a>
44	<a href="#">90206-10M24</a> Washer, wave	<a href="#">Buy now</a>
45	<a href="#">6894316500</a> Plate, tilt lock	<a href="#">Buy now</a>
46	<a href="#">9169030008</a> Pin. spring(656)	<a href="#">Buy now</a>

# Bracket 1

Ref	Part	
47	<a href="#">9050210M07</a> Spring, conical(6k3)	<a href="#">Buy now</a>



## Bracket 2

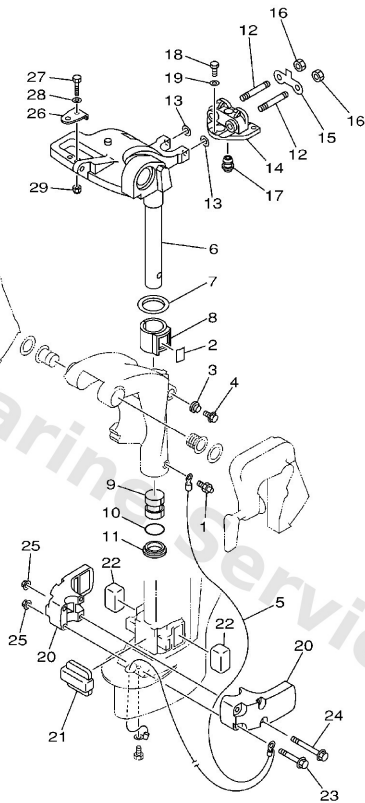


  
66MG300-1200

**E5**

Ref	Part	
1	<a href="#">93700-06M03</a> Nipple, grease(6a1)	<a href="#">Buy now</a>
2	<a href="#">63V-42528-00</a> Plate, friction	<a href="#">Buy now</a>
3	<a href="#">689-43373-01</a> Seal, damper	<a href="#">Buy now</a>
4	<a href="#">90105-06M07</a> Bolt (689)	<a href="#">Buy now</a>
5	<a href="#">66M-82127-00</a> Wire, Lead 2	<a href="#">Buy now</a>
6	<a href="#">66M-42511-01-4D</a> Bracket Steering S	<a href="#">Buy now</a>
6	<a href="#">66M-42511-11-4D</a> Bracket, steering L	<a href="#">Buy now</a>
7	<a href="#">90209-40008</a> Washer	<a href="#">Buy now</a>
8	<a href="#">65F-42537-00</a> Bushing, pivot shaft	<a href="#">Buy now</a>
9	<a href="#">90386-30048</a> Bush	<a href="#">Buy now</a>
10	<a href="#">93210-29M94</a> O-ring(6h1)	<a href="#">Buy now</a>
11	<a href="#">90386-30M60</a> Bush(6j8)	<a href="#">Buy now</a>
12	<a href="#">90116-08M54</a> Bolt, stud(63v)	<a href="#">Buy now</a>
13	<a href="#">90201-08M06</a> Washer, plate	<a href="#">Buy now</a>
14	<a href="#">66M-44514-00-4D</a> Mount damper, upper side	<a href="#">Buy now</a>

## Bracket 2

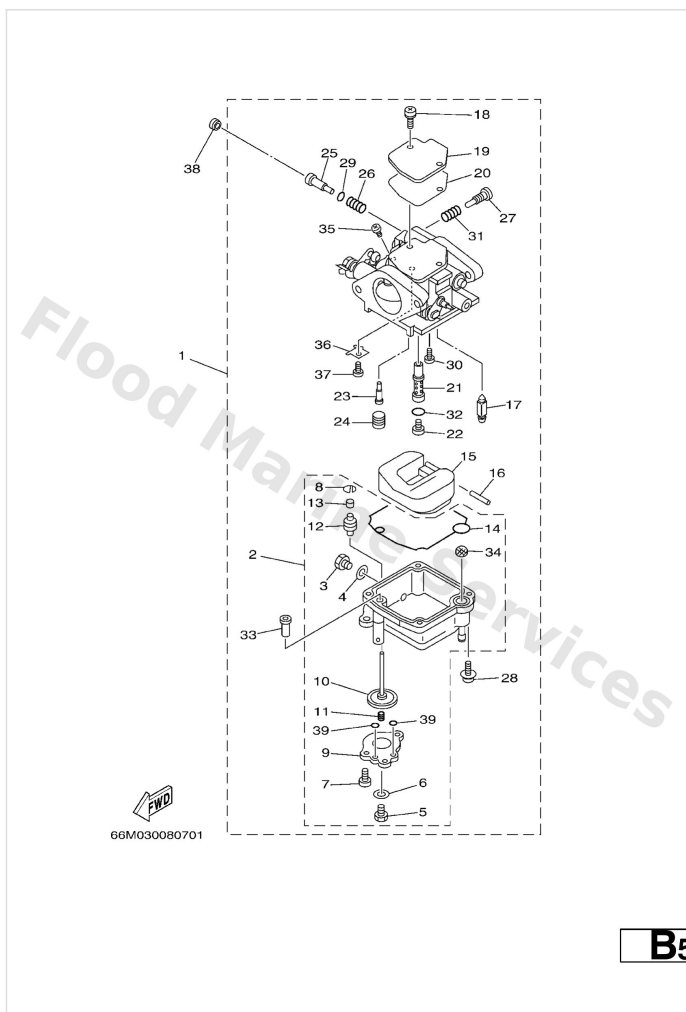


  
66M0300-1200

**E5**

Ref	Part	
15	<a href="#">66M-44526-00</a> Plate	<a href="#">Buy now</a>
16	<a href="#">95380-08600</a> Nut (661)	<a href="#">Buy now</a>
17	<a href="#">66M-44366-00</a> Damper, water seal	<a href="#">Buy now</a>
18	<a href="#">97075-06025</a> Bolt	<a href="#">Buy now</a>
19	<a href="#">92995-06600</a> Washer, plain (646)	<a href="#">Buy now</a>
20	<a href="#">66M-44551-00-4D</a> Housing, lower mount rubber 1	<a href="#">Buy now</a>
21	<a href="#">66M-44557-00</a> Mount damper, lower front	<a href="#">Buy now</a>
22	<a href="#">682-44555-30</a> Mount damper, lower side	<a href="#">Buy now</a>
23	<a href="#">90119-08M45</a> Bolt, with washer	<a href="#">Buy now</a>
24	<a href="#">90119-08M46</a> Bolt, with washer	<a href="#">Buy now</a>
25	<a href="#">90179-08M34</a> Nut	<a href="#">Buy now</a>
26	<a href="#">63V-48511-01</a> Hook, steering	<a href="#">Buy now</a>
27	<a href="#">97075-08035</a> Bolt(70w)	<a href="#">Buy now</a>
28	<a href="#">92995-08600</a> Washer, plain (663)	<a href="#">Buy now</a>
29	<a href="#">90185-08057</a> Nut, nylon (6j8)	<a href="#">Buy now</a>

# Carburetor

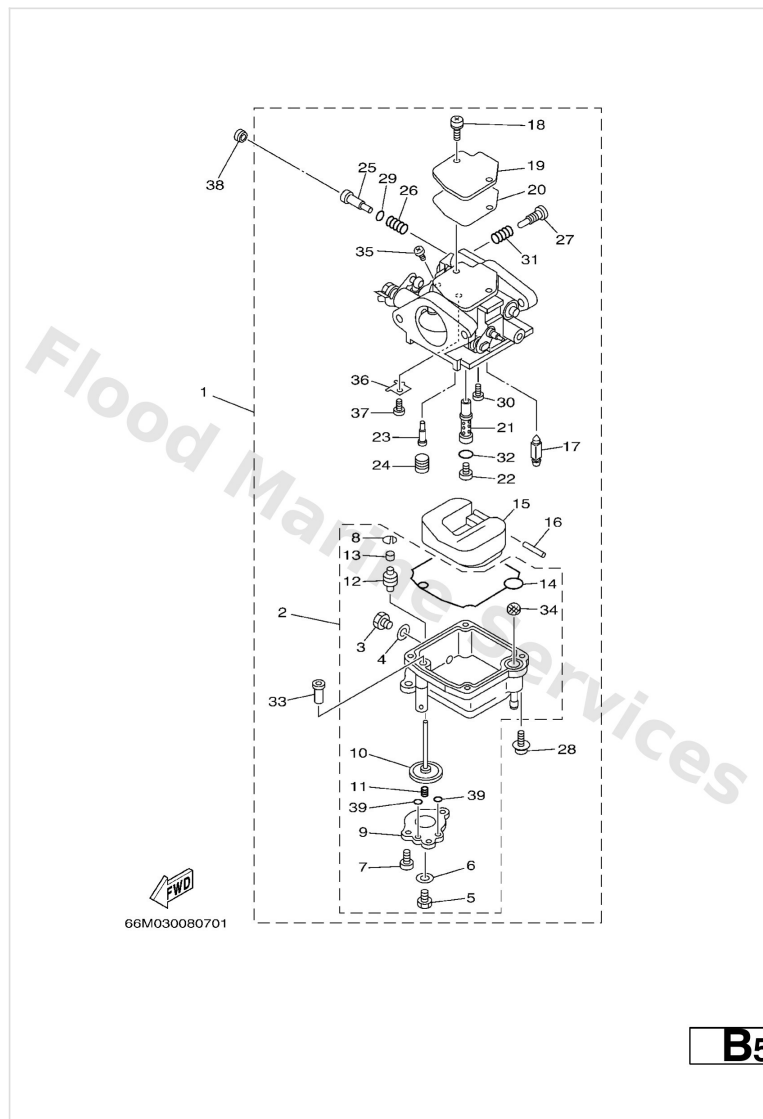


**B5**

Ref	Part	
1	<a href="#">66M-14301-00</a> Carburetor assembly 1 F13.5A,F15A-FOR STD	<a href="#">Buy now</a>
1	<a href="#">66M-14301-20</a> Carburetor assembly 1 *ECM-"F15A ONLY"	<a href="#">Buy now</a>
1	<a href="#">66N-14301-00</a> Carburetor assembly 1 F9.9C	<a href="#">Buy now</a>
2	<a href="#">66M-14381-02</a> Body Float Chamber F13.5A,F15A	<a href="#">Buy now</a>
2	<a href="#">66N-14381-00</a> Body, Float Chamber F9.9C	<a href="#">Buy now</a>
3	<a href="#">62Y-14383-00</a> Screw, drain	<a href="#">Buy now</a>
4	<a href="#">66M-14398-00</a> Gasket	<a href="#">Buy now</a>
5	<a href="#">677-14383-01</a> Screw, drain F13.5A,F15A	<a href="#">Buy now</a>
6	<a href="#">6L2-14398-00</a> Gasket F13.5A,F15A	<a href="#">Buy now</a>
7	<a href="#">66M-14325-00</a> Screw, pan head F13.5A,F15A	<a href="#">Buy now</a>
8	<a href="#">66M-14377-00</a> Stopper F13.5A,F15A	<a href="#">Buy now</a>
9	<a href="#">66M-14958-00</a> Cover, diaphragm F13.5A,F15A	<a href="#">Buy now</a>
10	<a href="#">66M-14368-01</a> Diaphragm assembly 1 F13.5A,F15A	<a href="#">Buy now</a>
11	<a href="#">6G8-14275-02</a> Spring F13.5A,F15A	<a href="#">Buy now</a>
12	<a href="#">66M-14239-00</a> Seal F13.5A,F15A	<a href="#">Buy now</a>

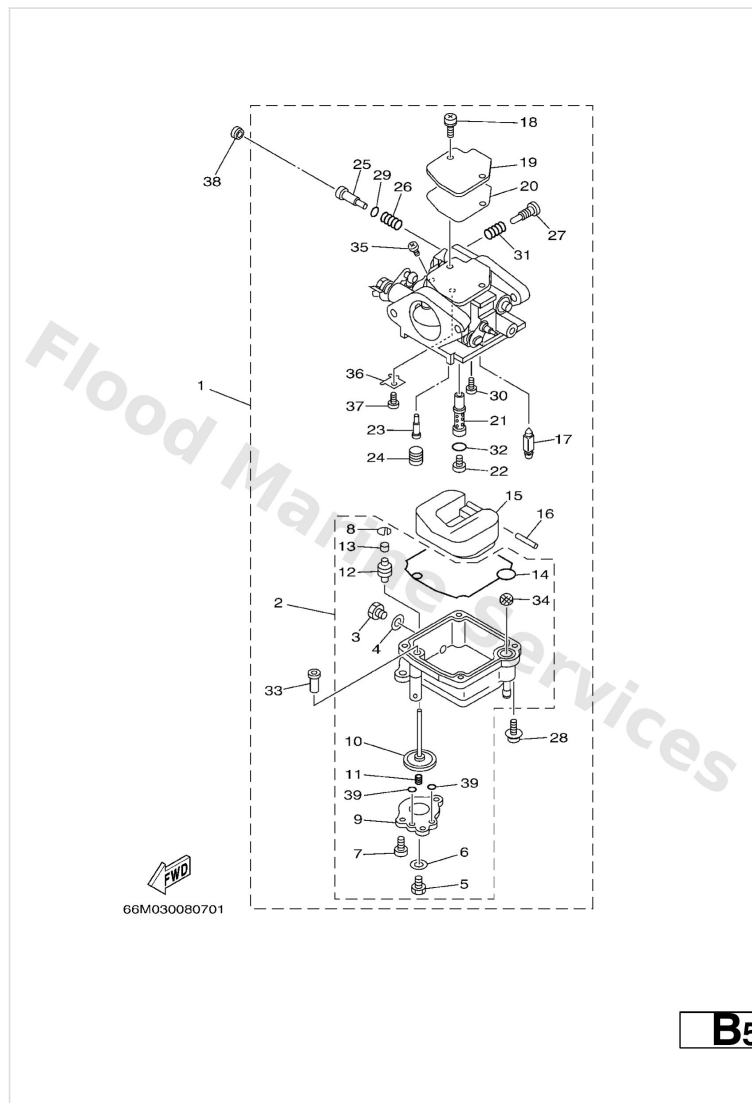


# Carburetor



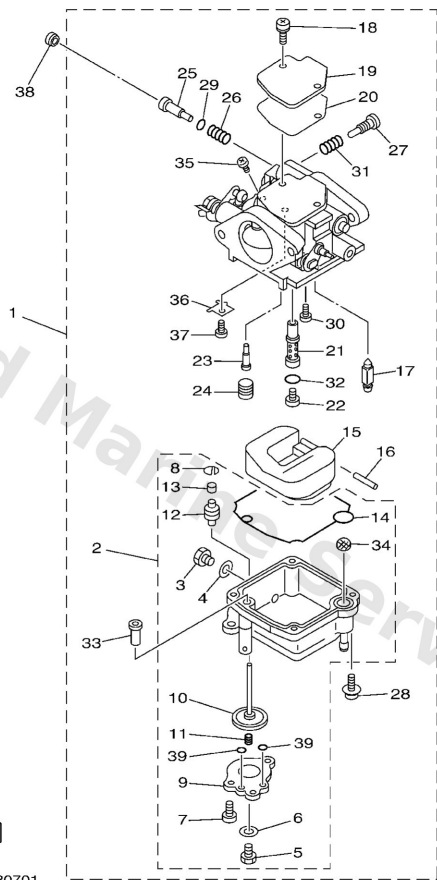
Ref	Part	
13	<a href="#">66M-14225-00</a> Cap F13.5A,F15A	<a href="#">Buy now</a>
14	<a href="#">66M-14384-00</a> Gasket, float chamber	<a href="#">Buy now</a>
15	<a href="#">6L2-14385-00</a> Float	<a href="#">Buy now</a>
16	<a href="#">6E5-14386-01</a> Pin, float	<a href="#">Buy now</a>
17	<a href="#">6L2-14392-00</a> Valve, needle	<a href="#">Buy now</a>
18	<a href="#">97980-04110</a> Screw, pan head (e56)	<a href="#">Buy now</a>
19	<a href="#">6L2-14157-00</a> Cover, mixing	<a href="#">Buy now</a>
20	<a href="#">62Y-14399-00</a> Gasket	<a href="#">Buy now</a>
21	<a href="#">66M-14341-00</a> Nozzle Main F13.5A,F15A-FOR STD	<a href="#">Buy now</a>
21	<a href="#">66M-14341-10</a> Nozzle Main *ECM-"F15A ONLY"	<a href="#">Buy now</a>
21	<a href="#">66N-14341-00</a> Nozzle, main F9.9C	<a href="#">Buy now</a>
22	<a href="#">66M-14343-51</a> Jet, Main (#102) *ECM-"F15A ONLY"	<a href="#">Buy now</a>
22	<a href="#">66M-14343-52</a> Jet, main (#104) F13.5A,F15A-FOR STD	<a href="#">Buy now</a>
22	<a href="#">66N-14343-34</a> Jet, main (#68) F9.9C	<a href="#">Buy now</a>
23	<a href="#">66M-14342-23</a> Jet, pilot (#45)	<a href="#">Buy now</a>

# Carburetor



Ref	Part	
24	<a href="#">62Y-14355-00</a> Plug F9.9C	<a href="#">Buy now</a>
24	<a href="#">66M-14355-00</a> Plug F13.5A,F15A	<a href="#">Buy now</a>
25	<a href="#">5H0-14323-00</a> Pilot screw set FOR STD	<a href="#">Buy now</a>
25	<a href="#">62Y-14323-10</a> Screw, Air Adjusting FOR *ECM	<a href="#">Buy now</a>
26	<a href="#">30X-14334-00</a> Spring, air adjusting	<a href="#">Buy now</a>
26	<a href="#">521-00</a> Screw, Throttle	<a href="#">Buy now</a>
28	<a href="#">97980-04112</a> Screw, pan head (686)	<a href="#">Buy now</a>
29	<a href="#">62Y-14397-00</a> O-ring	<a href="#">Buy now</a>
30	<a href="#">98980-04006</a> Screw, bind(612)	<a href="#">Buy now</a>
31	<a href="#">646-14212-01</a> Spring, pilot adjusting	<a href="#">Buy now</a>
32	<a href="#">6F5-14397-00</a> O-ring	<a href="#">Buy now</a>
33	<a href="#">66M-14272-00</a> Valve, check seat F13.5A,F15A	<a href="#">Buy now</a>
34	<a href="#">66M-14827-00</a> Filter	<a href="#">Buy now</a>
35	<a href="#">97890-04005</a> Screw, pan head(6g8)	<a href="#">Buy now</a>
36	<a href="#">66M-14157-00</a> Cover Mixing	<a href="#">Buy now</a>

# Carburetor

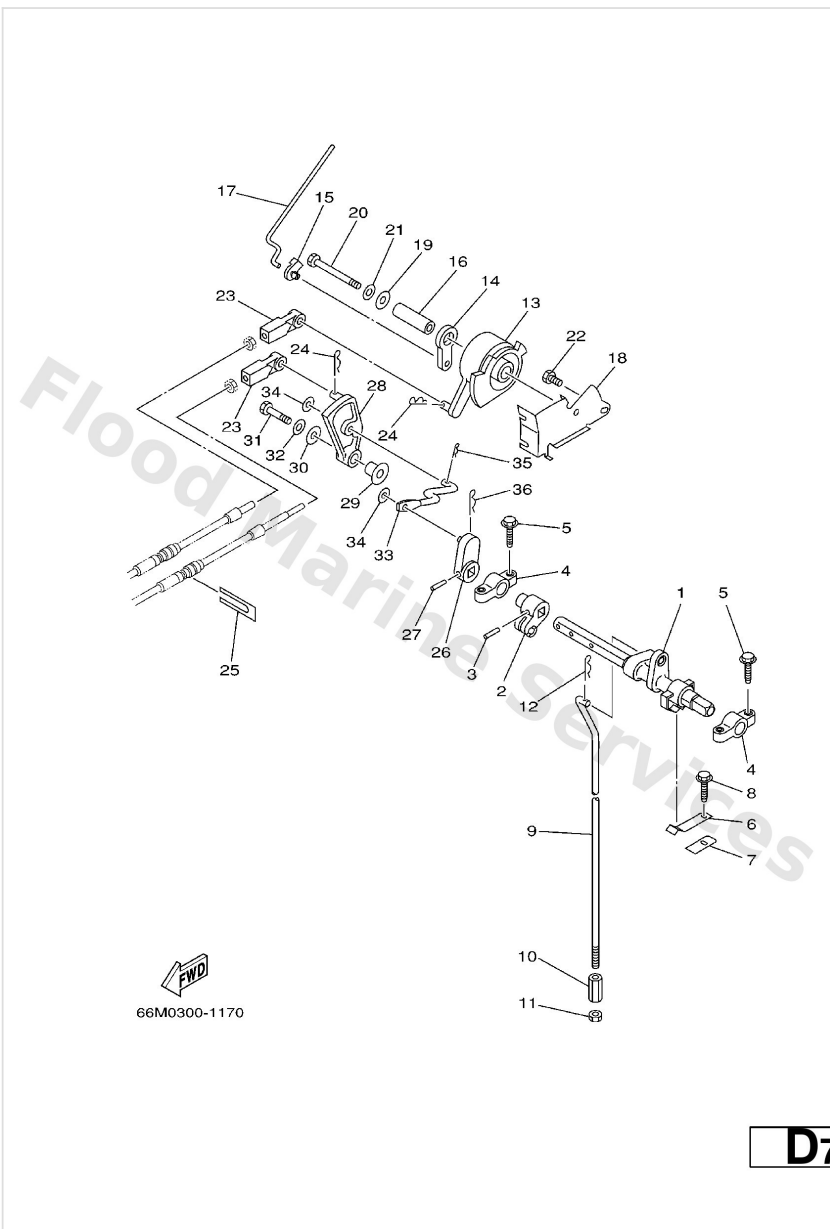


66M030080701

**B5**

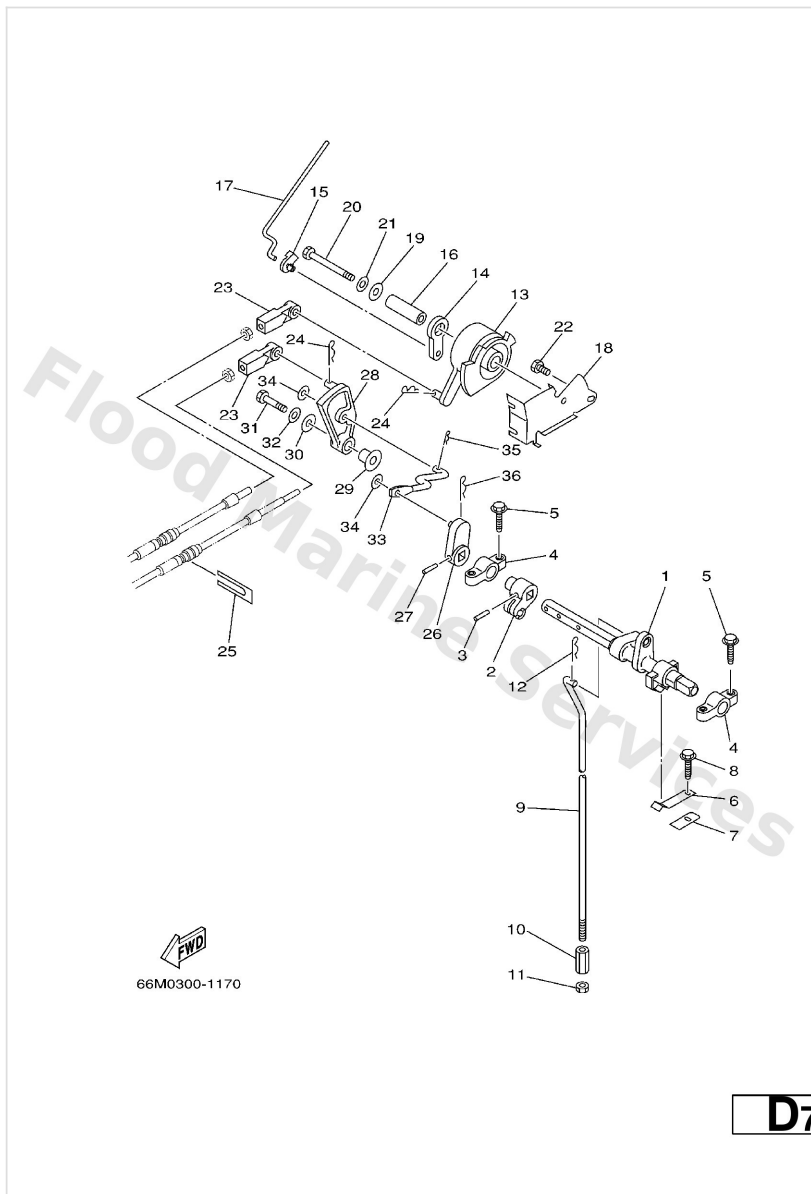
Ref	Part	
37	<a href="#">98580-03005</a> Screw, pan head(78g)	<a href="#">Buy now</a>
38	<a href="#">6G8-14457-00</a> Plug FOR *ECM	<a href="#">Buy now</a>
39	<a href="#">69M-24533-00</a> O-ring F13.5A,F15A	<a href="#">Buy now</a>

# Control



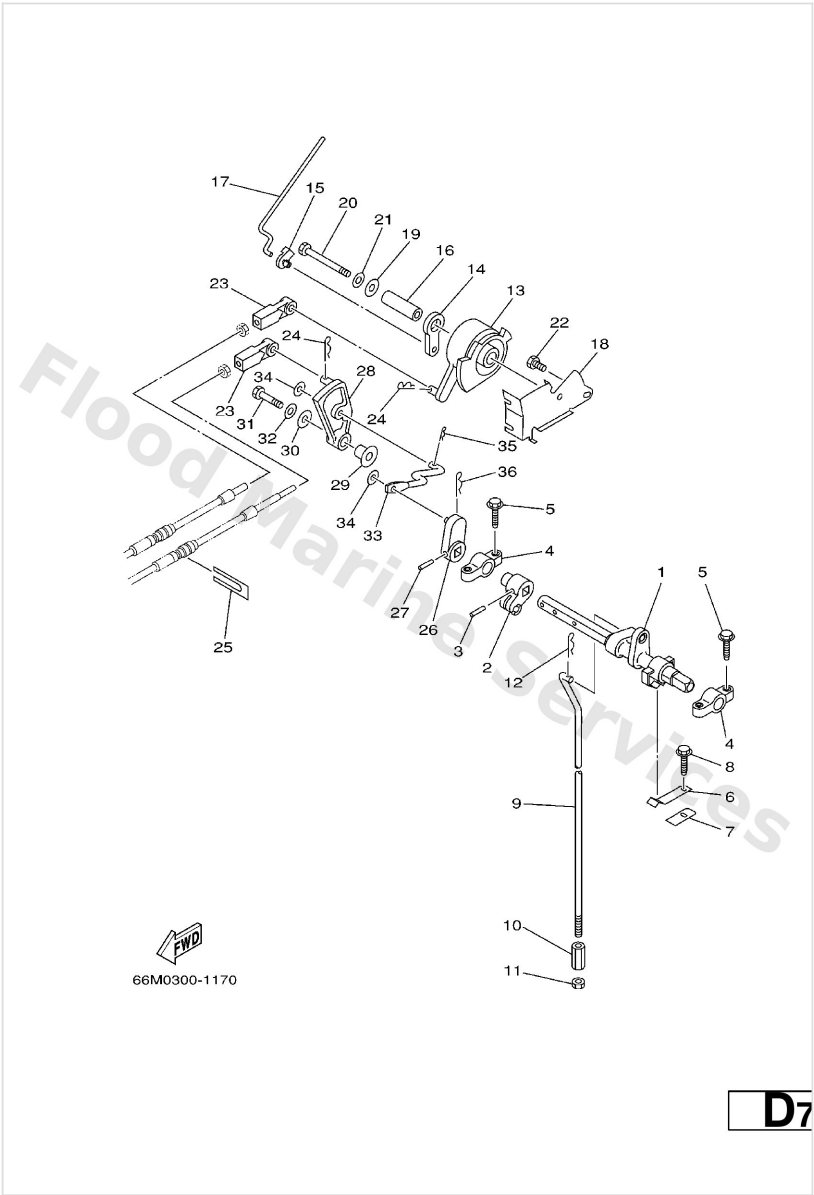
Ref	Part	
1	<a href="#">65W-44121-00</a> Lever, shift rod	<a href="#">Buy now</a>
2	<a href="#">66M-44122-00</a> Bushing, shift rod lever	<a href="#">Buy now</a>
3	<a href="#">90254-03M05</a> Pin, spring	<a href="#">Buy now</a>
4	<a href="#">6F5-41662-00</a> Bracket 2	<a href="#">Buy now</a>
5	<a href="#">90109-06M81</a> Bolt	<a href="#">Buy now</a>
6	<a href="#">65W-44116-00</a> Spring	<a href="#">Buy now</a>
7	<a href="#">66R-44114-00</a> Stopper	<a href="#">Buy now</a>
8	<a href="#">90109-06M86</a> Bolt	<a href="#">Buy now</a>
9	<a href="#">66M-44143-00</a> Rod, shift S	<a href="#">Buy now</a>
9	<a href="#">66M-44143-10</a> Rod, shift L	<a href="#">Buy now</a>
10	<a href="#">90170-06015</a> Connector, shift rod	<a href="#">Buy now</a>
11	<a href="#">95380-06700</a> Nut	<a href="#">Buy now</a>
12	<a href="#">90468-18008</a> Clip 620436610000	<a href="#">Buy now</a>
13	<a href="#">65W-41638-00</a> Pulley	<a href="#">Buy now</a>
14	<a href="#">65W-41283-00</a> Lever, free accel.	<a href="#">Buy now</a>

# Control



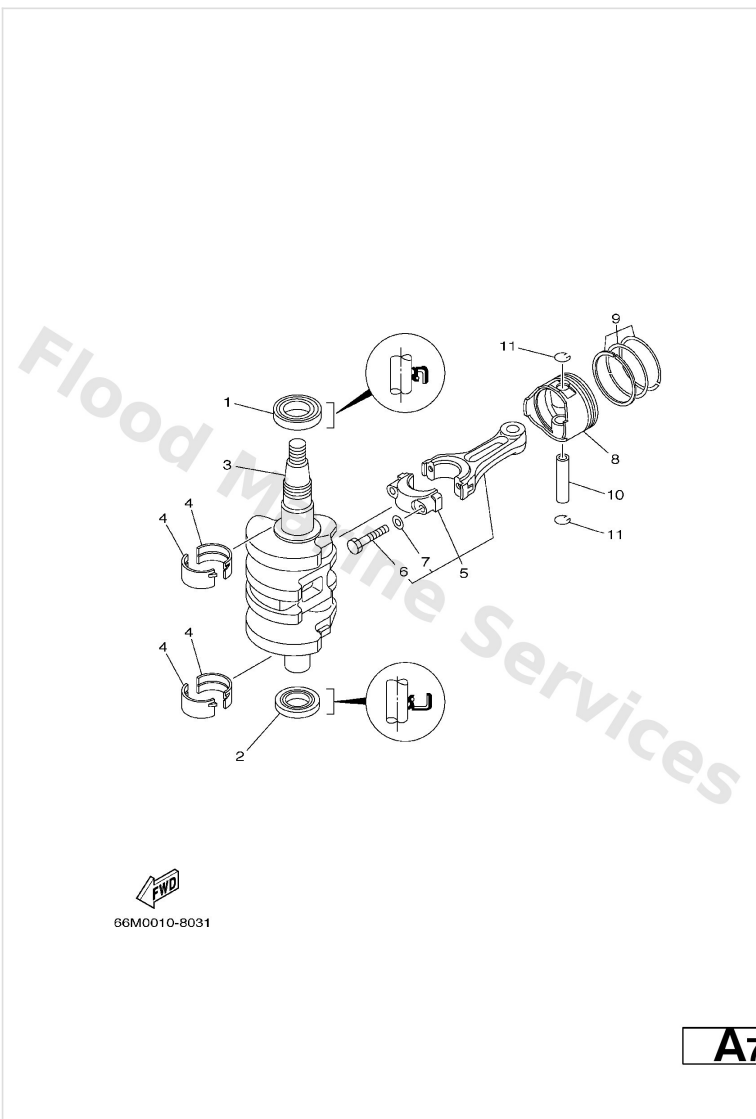
Ref	Part	
15	<a href="#">661-41262-02</a> Joint, choke lever	<a href="#">Buy now</a>
16	<a href="#">90387-06M08</a> Collar	<a href="#">Buy now</a>
17	<a href="#">66M-41211-00</a> Link, accel.	<a href="#">Buy now</a>
18	<a href="#">65W-14497-01</a> Stay, Throttle Wire	<a href="#">Buy now</a>
19	<a href="#">90201-06M31</a> Washer (6a0)	<a href="#">Buy now</a>
20	<a href="#">97095-06055</a> Bolt, hexagon w/w deep recess	<a href="#">Buy now</a>
21	<a href="#">92995-06600</a> Washer, plain (646)	<a href="#">Buy now</a>
22	<a href="#">97095-06010</a> Bolt	<a href="#">Buy now</a>
23	<a href="#">663-48344-00</a> Cable end, remote control	<a href="#">Buy now</a>
25	<a href="#">6H3-48538-00</a> Clamp, cable	<a href="#">Buy now</a>
26	<a href="#">65W-44142-00</a> Joint	<a href="#">Buy now</a>
28	<a href="#">65W-44125-00</a> Lever, shift rod	<a href="#">Buy now</a>
29	<a href="#">90387-06M29</a> Collar (6a0)	<a href="#">Buy now</a>
31	<a href="#">97095-06025</a> Bolt	<a href="#">Buy now</a>
33	<a href="#">66M-44192-00</a> Joint, rod 1	<a href="#">Buy now</a>

Control



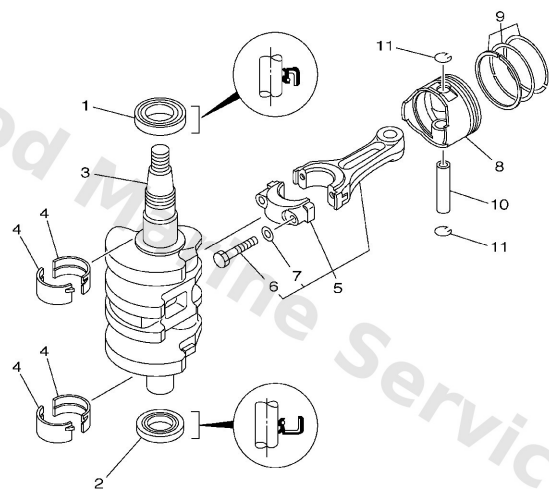
Ref	Part	
34	<a href="#">90201-05M06</a> Washer, plate(61u)	<a href="#">Buy now</a>
35	<a href="#">90468-10005</a> Pin, hair 6264123500	<a href="#">Buy now</a>

# Crankshaft. Piston



Ref	Part	
1	<a href="#">93102-35M51</a> Oil seal	<a href="#">Buy now</a>
2	<a href="#">93102-25M52</a> Oil seal	<a href="#">Buy now</a>
3	<a href="#">66M-11411-00</a> Crankshaft	<a href="#">Buy now</a>
4	<a href="#">66M-11416-00</a> Plane bearing, crankshaft 1 UR BROWN	<a href="#">Buy now</a>
4	<a href="#">66M-11416-10</a> Plane bearing, crankshaft 1 UR BLACK	<a href="#">Buy now</a>
4	<a href="#">66M-11416-20</a> Plane bearing, crankshaft 1 UR BLUE	<a href="#">Buy now</a>
5	<a href="#">66M-11650-00</a> Connecting rod kit	<a href="#">Buy now</a>
6	<a href="#">66M-11654-00</a> Bolt, connecting rod	<a href="#">Buy now</a>
7	<a href="#">90201-07M01</a> Washer, plate	<a href="#">Buy now</a>
8	<a href="#">66M-11631-00-96</a> Piston (std)	<a href="#">Buy now</a>
8	<a href="#">66M-11635-00</a> Piston (0.25mm o/s) AP	<a href="#">Buy now</a>
8	<a href="#">66M-11636-00</a> Piston (0.50Mm O/S) AP	<a href="#">Buy now</a>
9	<a href="#">66M-11603-00</a> Piston ring set (std)	<a href="#">Buy now</a>
9	<a href="#">66M-11604-00</a> Piston ring set (0.25mm o/s) AP	<a href="#">Buy now</a>
9	<a href="#">66M-11605-00</a> Piston ring set (0.50mm o/s) AP	<a href="#">Buy now</a>

## Crankshaft. Piston



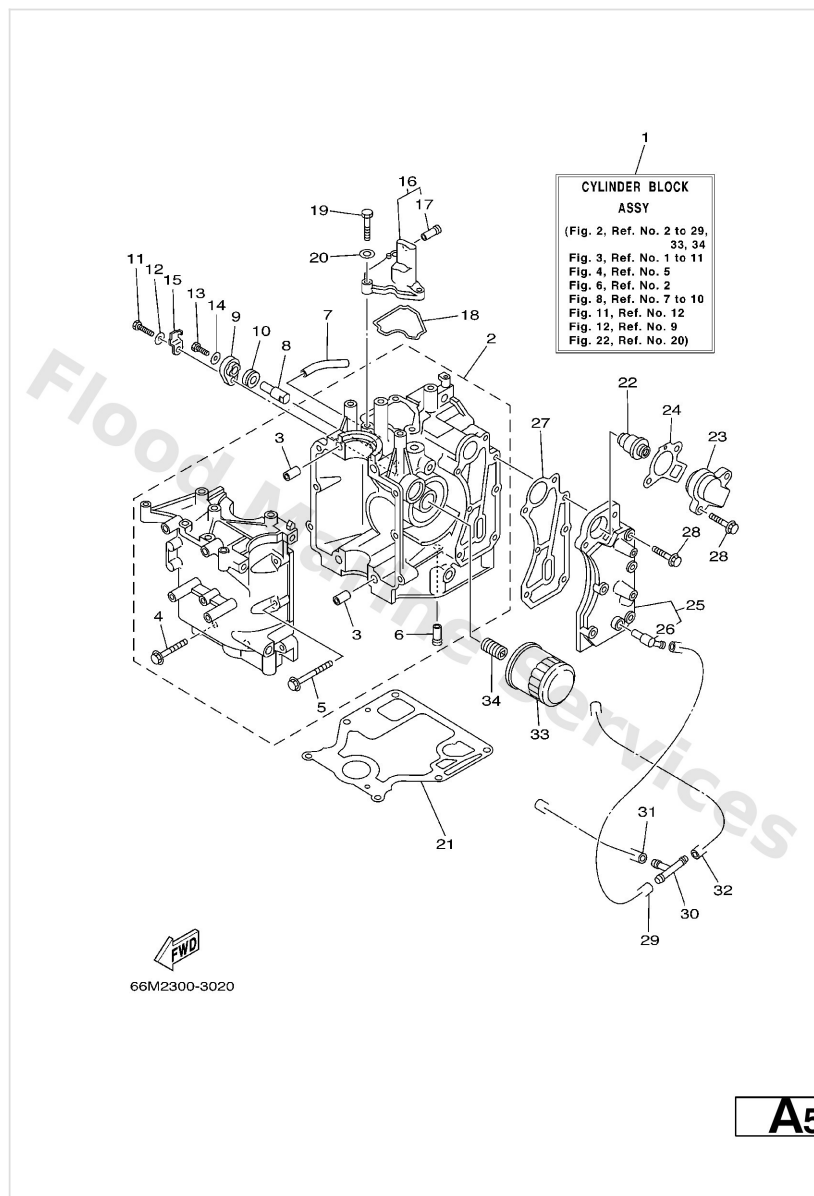
  
66M0010-8031

**A7**

Ref	Part	
10	<a href="#">634-11633-00</a> Pin, piston	<a href="#">Buy now</a>
11	<a href="#">93450-15023</a> Circlip 131116340000	<a href="#">Buy now</a>

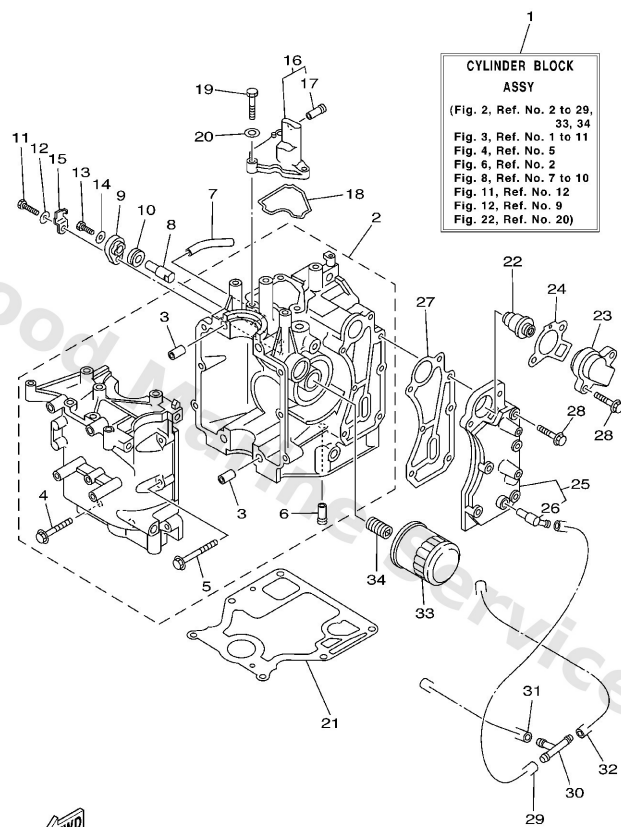


# Cylinder. Crankcase 1



Ref	Part	
3	<a href="#">99510-10114</a> Pin, dowel(3vd)	<a href="#">Buy now</a>
4	<a href="#">90119-08M66</a> Bolt, with washer	<a href="#">Buy now</a>
5	<a href="#">90119-06M14</a> Bolt, with washer (677)	<a href="#">Buy now</a>
6	<a href="#">6E5-24377-00</a> Pipe, joint	<a href="#">Buy now</a>
7	<a href="#">90445-10M46</a> Hose (I200)	<a href="#">Buy now</a>
8	<a href="#">66M-11325-00</a> Anode	<a href="#">Buy now</a>
10	<a href="#">66M-11328-00</a> Grommet, anode	<a href="#">Buy now</a>
11	<a href="#">97095-06020</a> Bolt(7u8)	<a href="#">Buy now</a>
12	<a href="#">92995-06600</a> Washer, plain (646)	<a href="#">Buy now</a>
13	<a href="#">97095-05012</a> Bolt, hexagon	<a href="#">Buy now</a>
14	<a href="#">92995-05600</a> Washer, plain (646)	<a href="#">Buy now</a>
15	<a href="#">66M-12535-00</a> Plate	<a href="#">Buy now</a>
18	<a href="#">66M-11357-00</a> Seal, cylinder 3	<a href="#">Buy now</a>
21	<a href="#">66M-11351-00</a> Gasket, cylinder	<a href="#">Buy now</a>
22	<a href="#">66M-12411-00</a> Thermostat	<a href="#">Buy now</a>

# Cylinder. Crankcase 1

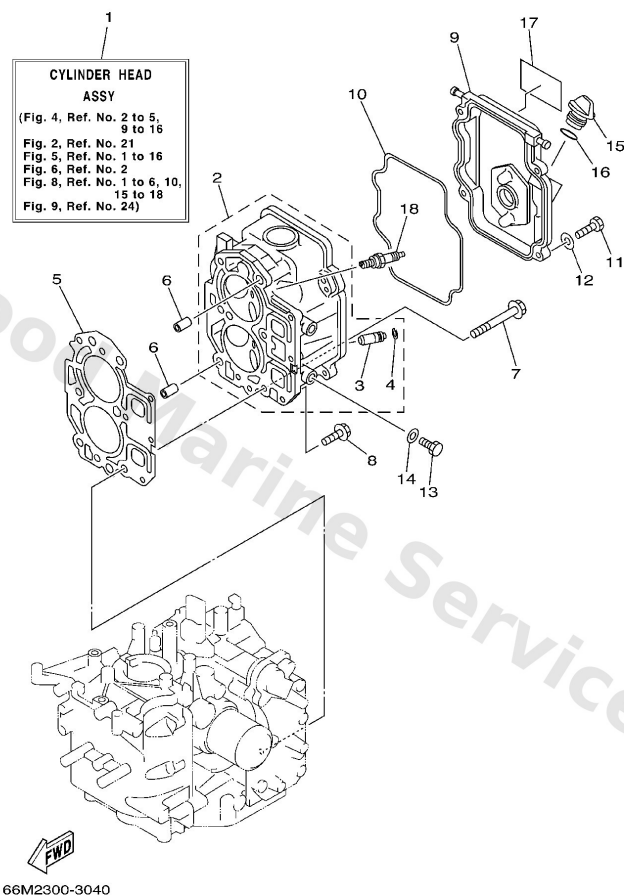


**FWD**  
 66M2300-3020

**A5**

Ref	Part	
24	<a href="#">62Y-12414-00</a> Gasket, cover	<a href="#">Buy now</a>
26	<a href="#">676-11372-00</a> Nipple, hose	<a href="#">Buy now</a>
27	<a href="#">66M-41114-00</a> Gasket, exhaust outer cover	<a href="#">Buy now</a>
28	<a href="#">90119-06MA4</a> Bolt, with washer	<a href="#">Buy now</a>
29	<a href="#">90445-09061</a> Hose (L65)	<a href="#">Buy now</a>
30	<a href="#">688-24378-00</a> Pipe, joint	<a href="#">Buy now</a>
31	<a href="#">90445-09086</a> Hose (I1500)	<a href="#">Buy now</a>
32	<a href="#">90445-09105</a> Hose (I420)	<a href="#">Buy now</a>
33	<a href="#">5GH-13440-00</a> Element assembly, oil cleaner	<a href="#">Buy now</a>
34	<a href="#">90401-20M00</a> Bolt, union(62y)	<a href="#">Buy now</a>

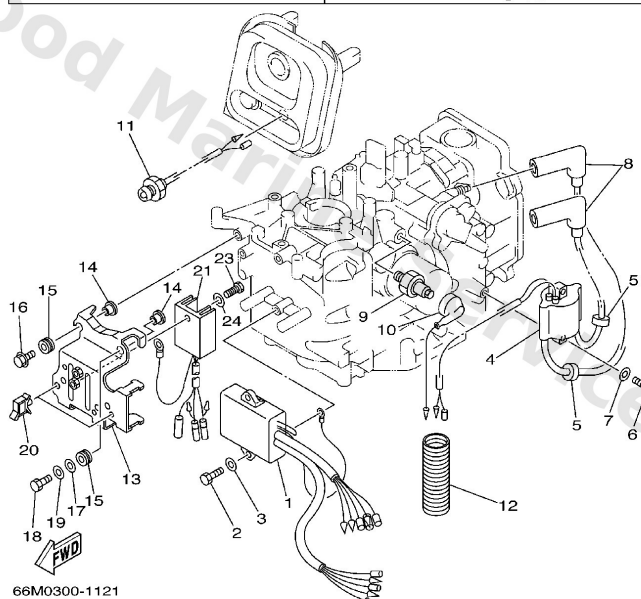
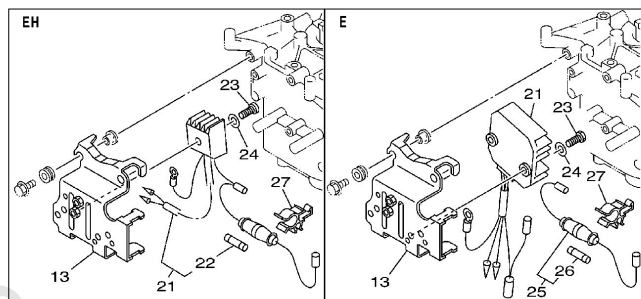
## Cylinder. Crankcase 2



**B1**

Ref	Part	
3	<a href="#">66M-11133-10</a> Guide Valve 1	<a href="#">Buy now</a>
4	<a href="#">93450-09M01</a> Circlip (6g8)	<a href="#">Buy now</a>
5	<a href="#">66M-11181-00</a> Gasket, cylinder head 1	<a href="#">Buy now</a>
6	<a href="#">99510-10114</a> Pin, dowel(3vd)	<a href="#">Buy now</a>
7	<a href="#">90105-08M78</a> Bolt, washer based	<a href="#">Buy now</a>
8	<a href="#">90119-06MA3</a> Bolt, with washer	<a href="#">Buy now</a>
10	<a href="#">66M-11356-00</a> Seal, cylinder 2	<a href="#">Buy now</a>
11	<a href="#">97095-06020</a> Bolt(7u8)	<a href="#">Buy now</a>
12	<a href="#">92995-06600</a> Washer, plain (646)	<a href="#">Buy now</a>
13	<a href="#">97095-08014</a> Bolt, hexagon deep recess <i>*ECM-"F15A ONLY"</i>	<a href="#">Buy now</a>
14	<a href="#">90430-08143</a> Gasket (256-11198-00) <i>*ECM-"F15A ONLY"</i>	<a href="#">Buy now</a>
15	<a href="#">6G8-15363-00</a> Plug, oil	<a href="#">Buy now</a>
16	<a href="#">93210-24M79</a> O-ring	<a href="#">Buy now</a>
17	<a href="#">66M-12138-60</a> Mark Caution	<a href="#">Buy now</a>
18	<a href="#">94701-00375</a> Plug, spark (dpr6ea-9)(62y)	<a href="#">Buy now</a>

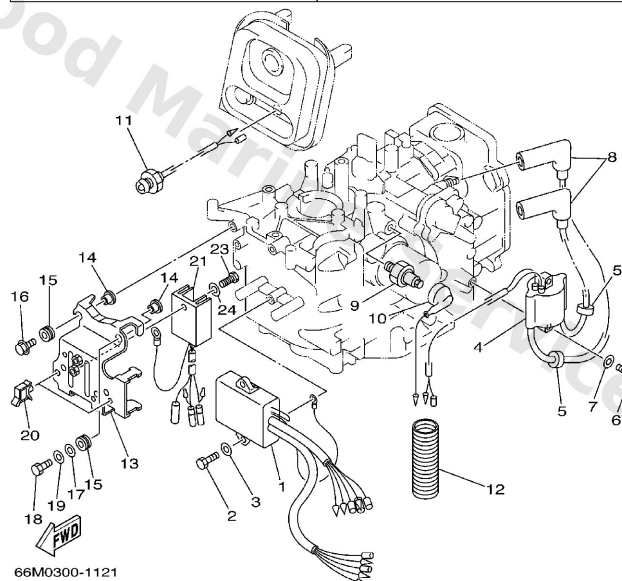
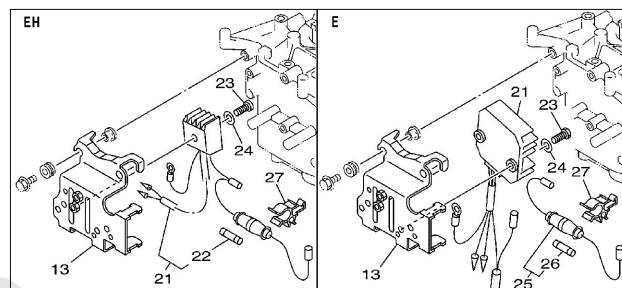
# Electrical 1



C6

Ref	Part	
1	<a href="#">66M-85540-01</a> C.d.i. Unit assembly F9.9C,F13.5A	<a href="#">Buy now</a>
1	<a href="#">66M-85540-10</a> C.d.i. unit assembly F15A	<a href="#">Buy now</a>
2	<a href="#">97095-06020</a> Bolt(7u8)	<a href="#">Buy now</a>
3	<a href="#">92995-06600</a> Washer, plain (646)	<a href="#">Buy now</a>
4	<a href="#">66M-85570-00</a> Ignition coil assembly	<a href="#">Buy now</a>
5	<a href="#">90480-25161</a> Grommet(656)	<a href="#">Buy now</a>
8	<a href="#">6G8-82370-30</a> Plug cap assembly	<a href="#">Buy now</a>
9	<a href="#">62Y-82504-10</a> Oil pressure switch assembly	<a href="#">Buy now</a>
10	<a href="#">66M-82127-10</a> Wire, lead 2	<a href="#">Buy now</a>
11	<a href="#">65W-85410-01</a> Emergency signal light assembly	<a href="#">Buy now</a>
12	<a href="#">6H1-83557-00</a> Tube	<a href="#">Buy now</a>
13	<a href="#">66M-85542-00</a> Bracket	<a href="#">Buy now</a>
13	<a href="#">66M-85542-10</a> Bracket	<a href="#">Buy now</a>
14	<a href="#">90387-06M05</a> Collar(6h4)	<a href="#">Buy now</a>
15	<a href="#">90480-13M24</a> Grommet (6e9)	<a href="#">Buy now</a>

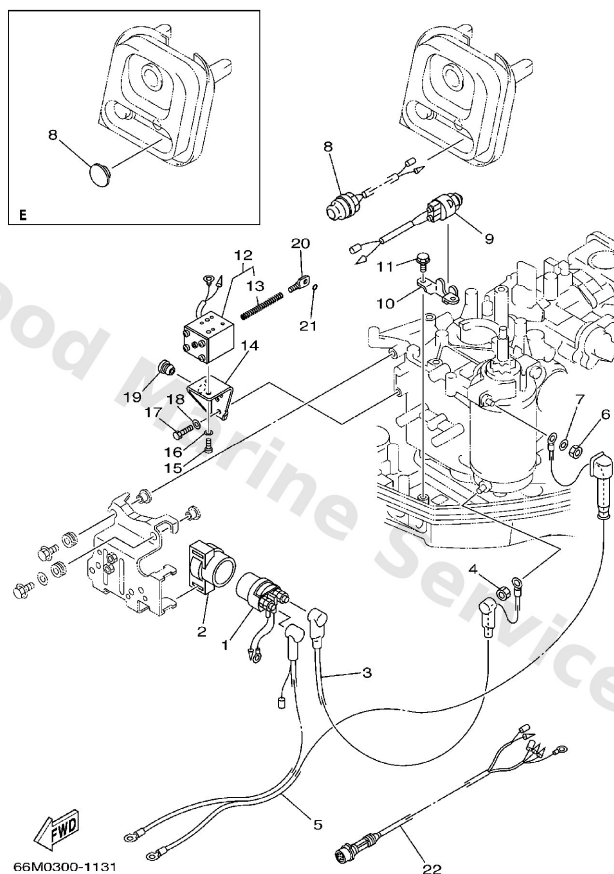
# Electrical 1



**C6**

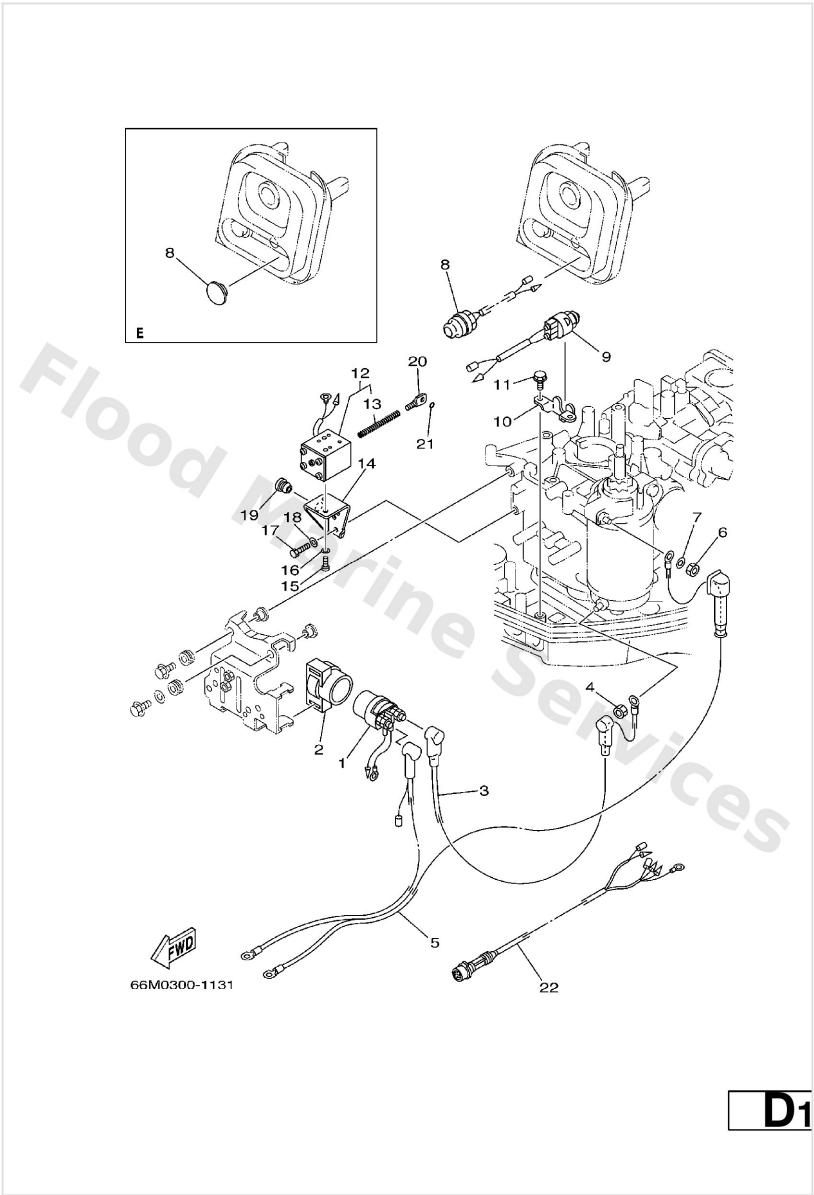
Ref	Part	
16	<a href="#">95895-06020</a> Bolt, flange(jk3)	<a href="#">Buy now</a>
17	<a href="#">90201-06M05</a> Washer, plate(6e3)	<a href="#">Buy now</a>
18	<a href="#">97095-06025</a> Bolt	<a href="#">Buy now</a>
20	<a href="#">90464-09M13</a> Clamp (6h1)	<a href="#">Buy now</a>
21	<a href="#">6G1-81970-61</a> Rectifier assembly	<a href="#">Buy now</a>
21	<a href="#">6G8-81960-A1</a> Rectifier & regulator assembly	<a href="#">Buy now</a>
21	<a href="#">6J8-81960-00</a> Rectifier & regulator assembly	<a href="#">Buy now</a>
22	<a href="#">6G1-82151-00</a> Fuse (10a) <b>FOR 6G1-81970-61</b>	<a href="#">Buy now</a>
23	<a href="#">97095-06016</a> Bolt, hexagon deep recess	<a href="#">Buy now</a>
23	<a href="#">97880-05025</a> Screw, panhead (a93)	<a href="#">Buy now</a>
24	<a href="#">92990-05600</a> Washer, plain (646)	<a href="#">Buy now</a>
25	<a href="#">6G8-82150-00</a> Fuse holder assembly	<a href="#">Buy now</a>
26	<a href="#">663-82151-00</a> Fuse	<a href="#">Buy now</a>
27	<a href="#">6G5-82152-00</a> Holder, fuse	<a href="#">Buy now</a>

## Electrical 2



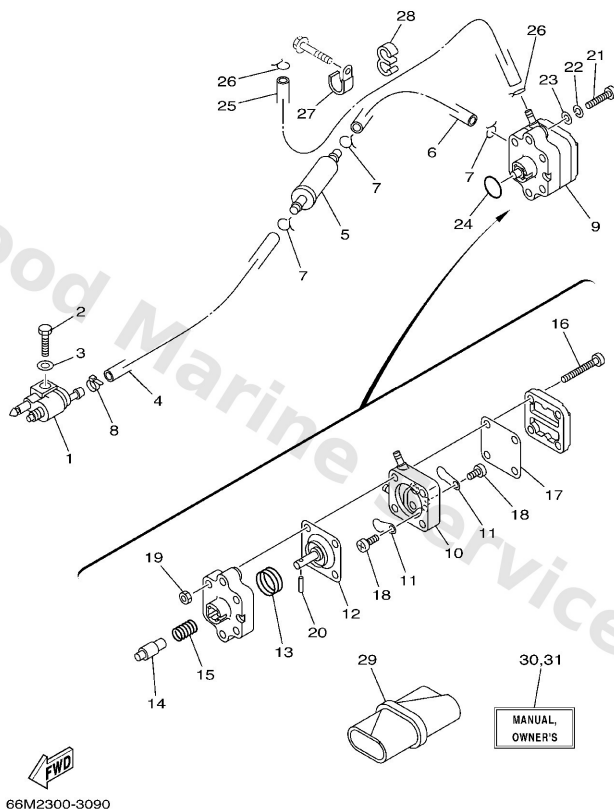
Ref	Part	
1	<a href="#">6G1-81941-10</a> Starter relay	<a href="#">Buy now</a>
2	<a href="#">6G1-81952-00</a> Holder, relay	<a href="#">Buy now</a>
3	<a href="#">66M-82117-00</a> Wire, lead	<a href="#">Buy now</a>
4	<a href="#">65W-8182B-00</a> Nut, special	<a href="#">Buy now</a>
5	<a href="#">66M-82105-00</a> Battery cable	<a href="#">Buy now</a>
6	<a href="#">95380-08700</a> Nut(661)	<a href="#">Buy now</a>
7	<a href="#">92990-08600</a> Washer, plain (663)	<a href="#">Buy now</a>
8	<a href="#">65W-81870-00</a> Starting switch assembly	<a href="#">Buy now</a>
8	<a href="#">6G1-42725-00</a> Grommet	<a href="#">Buy now</a>
9	<a href="#">6H3-82540-00</a> Neutral switch assembly	<a href="#">Buy now</a>
10	<a href="#">6J8-82554-00</a> Stay, neutral switch	<a href="#">Buy now</a>
11	<a href="#">90109-06M86</a> Bolt	<a href="#">Buy now</a>
12	<a href="#">66M-86111-00</a> Coil, solenoid	<a href="#">Buy now</a>
13	<a href="#">66M-86116-00</a> Wire, Pull	<a href="#">Buy now</a>
14	<a href="#">66M-86112-00</a> Stay Solenoid	<a href="#">Buy now</a>

## Electrical 2



Ref	Part	
15	<a href="#">97880-05008</a> Screw, with washer	<a href="#">Buy now</a>
16	<a href="#">92990-05600</a> Washer, plain (646)	<a href="#">Buy now</a>
17	<a href="#">97095-06016</a> Bolt, hexagon deep recess	<a href="#">Buy now</a>
18	<a href="#">92995-06600</a> Washer, plain (646)	<a href="#">Buy now</a>
19	<a href="#">90480-10M13</a> Grommet (6e0)	<a href="#">Buy now</a>
20	<a href="#">66M-86117-00</a> Hook, wire pull	<a href="#">Buy now</a>
21	<a href="#">93210-03261</a> O-ring (663)	<a href="#">Buy now</a>
22	<a href="#">66M-82590-00</a> Wire Harness assembly	<a href="#">Buy now</a>

# Fuel



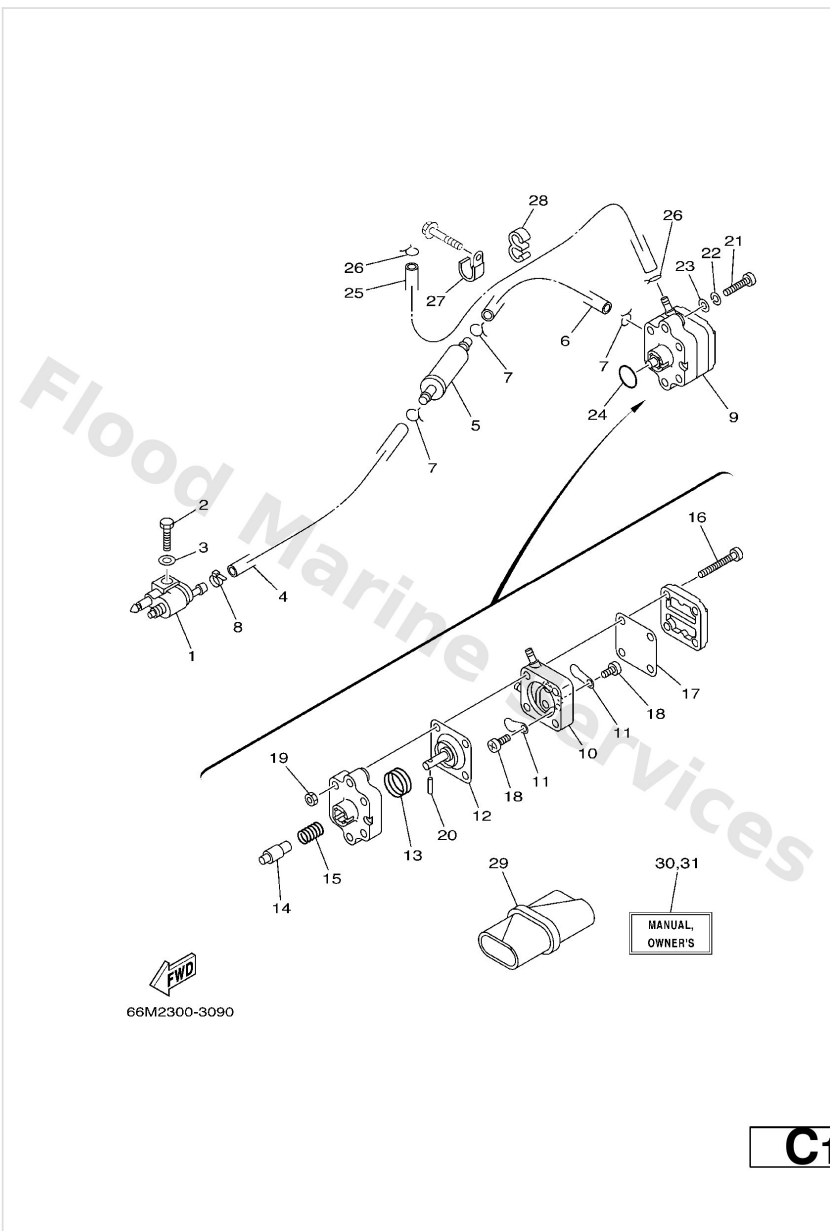
66M2300-3090

**C1**

Ref	Part	
1	<a href="#">6G1-24304-02</a> Fuel pipe joint comp. 1	<a href="#">Buy now</a>
2	<a href="#">97095-06020</a> Bolt(7u8)	<a href="#">Buy now</a>
3	<a href="#">92995-06600</a> Washer, plain (646)	<a href="#">Buy now</a>
4	<a href="#">90445-10M40</a> Hose (I400)	<a href="#">Buy now</a>
5	<a href="#">65W-24251-00</a> Strainer 1	<a href="#">Buy now</a>
6	<a href="#">90445-10M20</a> Hose (I400)	<a href="#">Buy now</a>
7	<a href="#">90467-09M03</a> Clip(6k8)	<a href="#">Buy now</a>
8	<a href="#">90465-11M10</a> Clamp	<a href="#">Buy now</a>
9	<a href="#">66M-24410-10</a> Fuel pump assembly	<a href="#">Buy now</a>
10	<a href="#">66M-24413-01</a> Body 2	<a href="#">Buy now</a>
11	<a href="#">6A0-24421-01</a> Valve, check	<a href="#">Buy now</a>
12	<a href="#">66M-24411-10</a> Diaphragm	<a href="#">Buy now</a>
13	<a href="#">66M-24423-00</a> Spring, diaphragm	<a href="#">Buy now</a>
14	<a href="#">66M-13131-10</a> Plunger	<a href="#">Buy now</a>
15	<a href="#">66M-24454-00</a> Spring	<a href="#">Buy now</a>

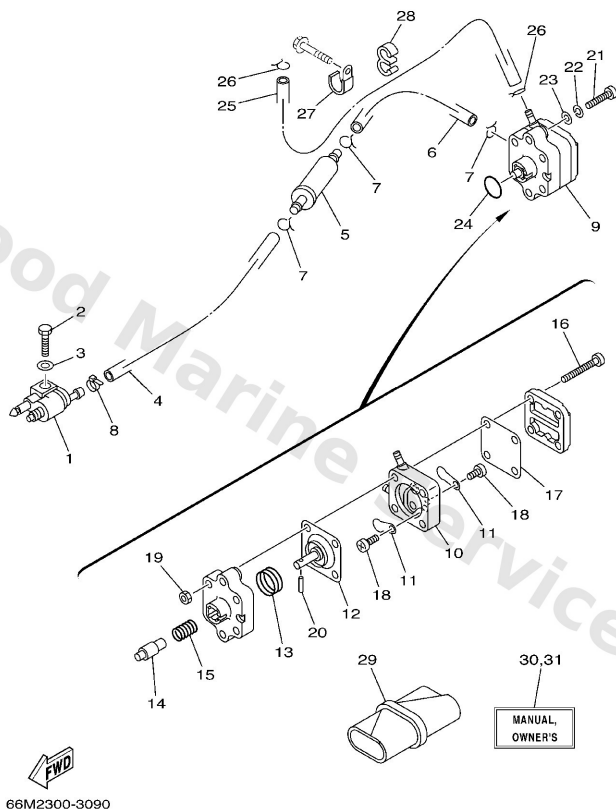


# Fuel



Ref	Part	
16	<a href="#">66M-24444-00</a> Screw	<a href="#">Buy now</a>
17	<a href="#">66M-24471-00</a> Diaphragm	<a href="#">Buy now</a>
18	<a href="#">6E7-14325-00</a> Screw, pan head	<a href="#">Buy now</a>
19	<a href="#">95380-05600</a> Nut, hexagon (663)	<a href="#">Buy now</a>
20	<a href="#">66M-24374-00</a> Pin	<a href="#">Buy now</a>
21	<a href="#">97880-06030</a> Screw, pan head(6e0)	<a href="#">Buy now</a>
22	<a href="#">92990-06100</a> Washer(6a1)	<a href="#">Buy now</a>
23	<a href="#">92990-06600</a> Washer, plain (646)	<a href="#">Buy now</a>
24	<a href="#">93210-20M65</a> O-ring	<a href="#">Buy now</a>
25	<a href="#">90445-10M93</a> Hose (l400)	<a href="#">Buy now</a>
27	<a href="#">90465-06M86</a> Clamp	<a href="#">Buy now</a>
28	<a href="#">90464-09M31</a> Clamp(6m7)	<a href="#">Buy now</a>
29	<a href="#">62Y-28100-00</a> Tool kit	<a href="#">Buy now</a>
30	<a href="#">66M-28199-76-A0</a> O/m f9.9cmh/ce/t9.9dmh/de/ '03 UR (E,F,S)	<a href="#">Buy now</a>
30	<a href="#">66M-28199-76-B0</a> O/m f9.9cmh/ce/t9.9dmh/de/ '03 UR (D,NL,I)	<a href="#">Buy now</a>

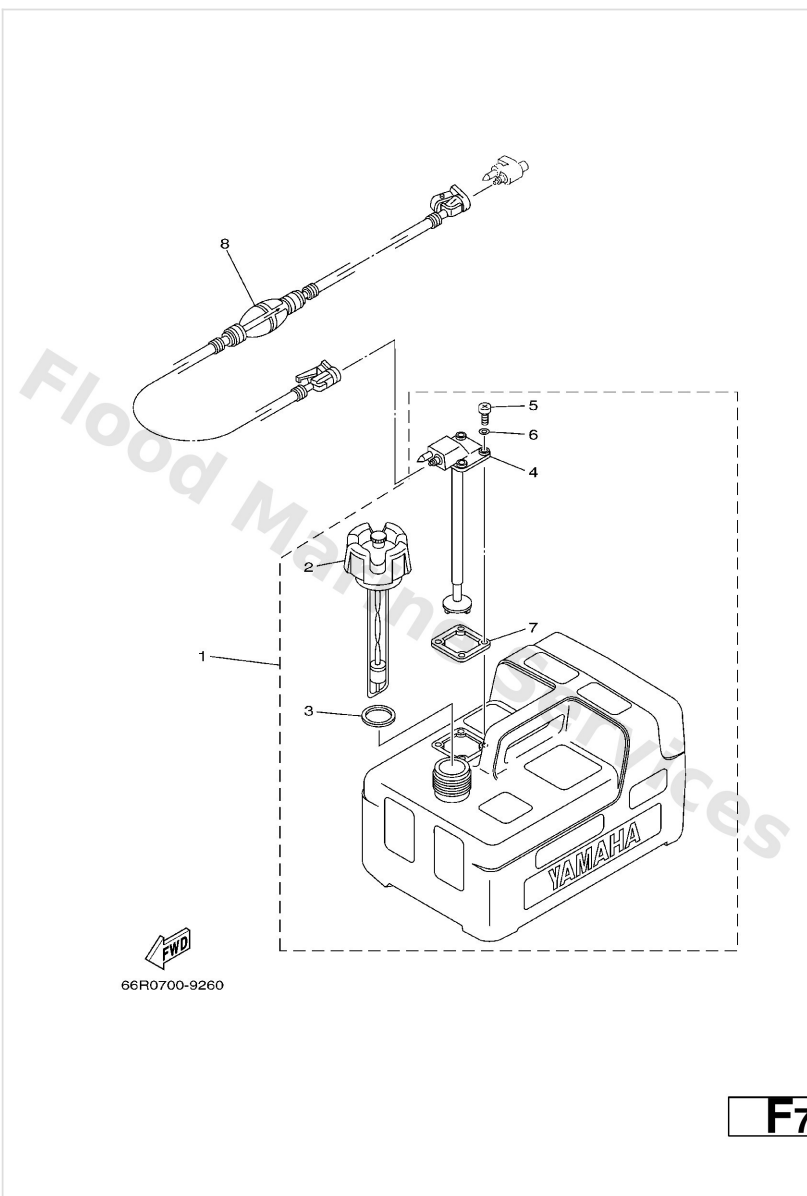
# Fuel



**C1**

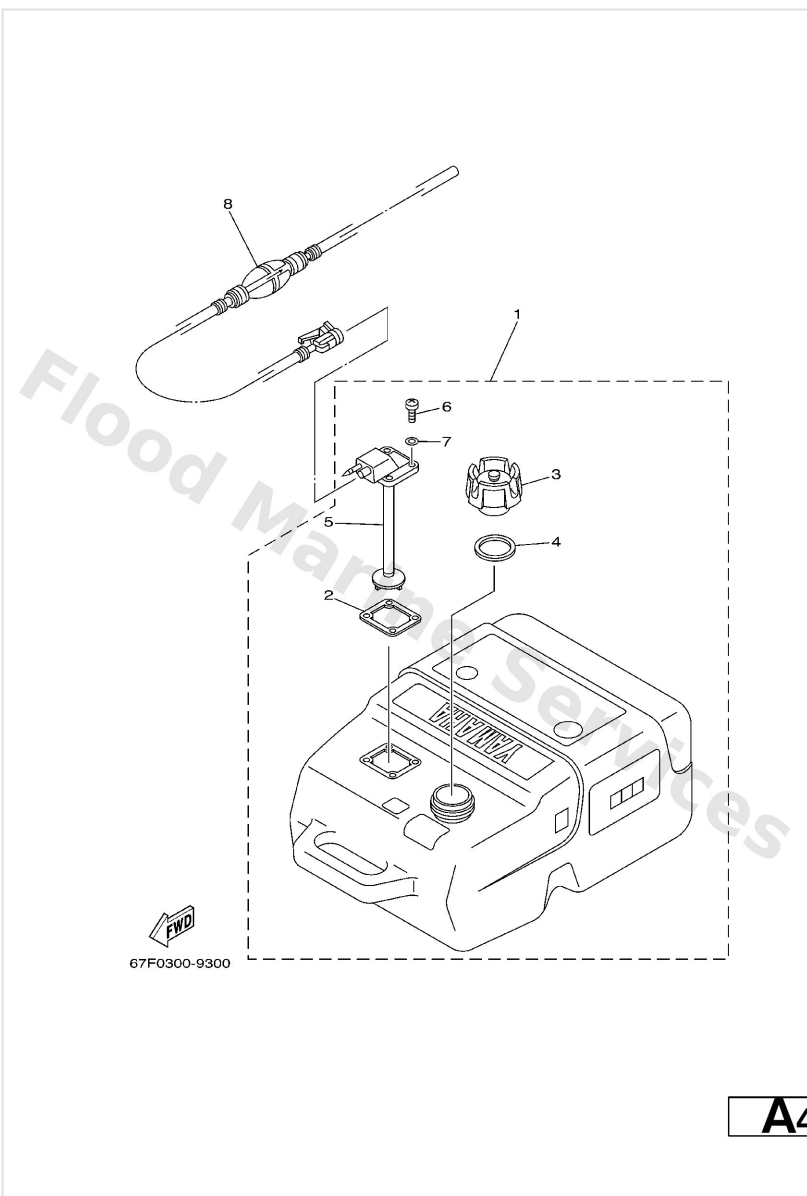
Ref	Part	
31	<a href="#">66M-28199-86-A0</a> O/m f13.5amh/f15ae/aeh/ehw '03 UR (DK,P,GR)	<a href="#">Buy now</a>
31	<a href="#">66M-28199-86-B0</a> O/m f13.5amh/f15ae/aeh/ehw '03 UR (N,S,SS)	<a href="#">Buy now</a>

# Fuel Tank 1



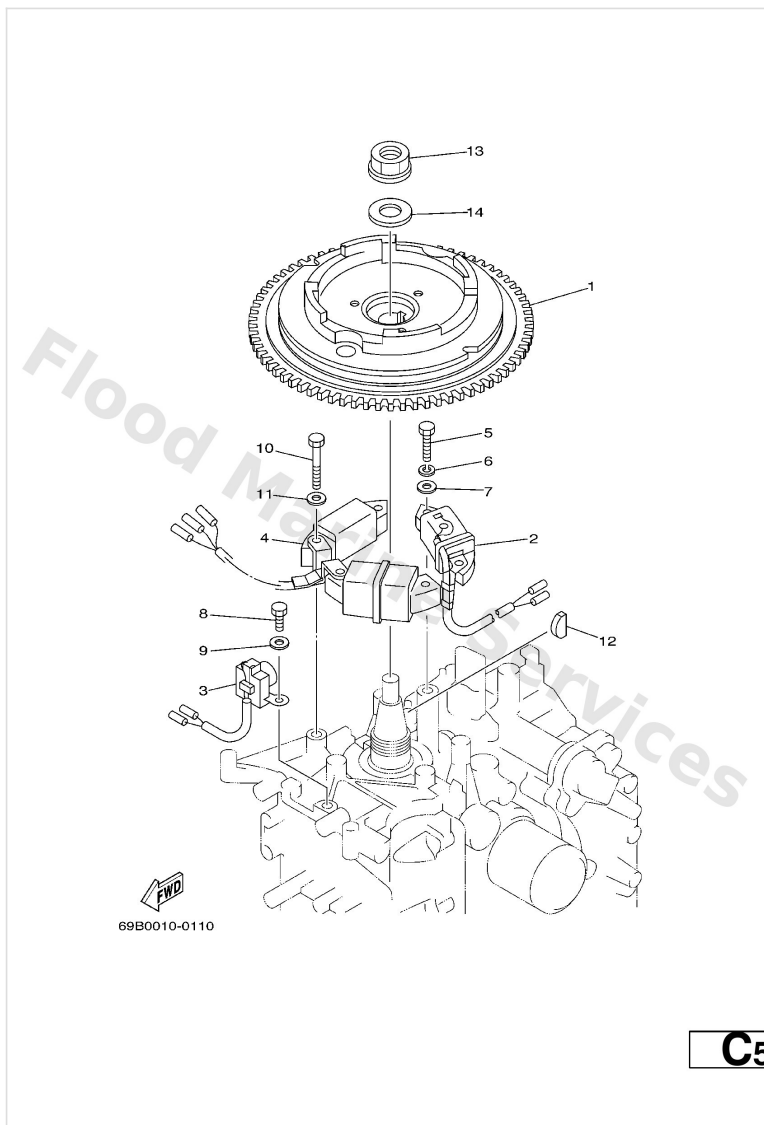
Ref	Part	
1	<a href="#">6YL-24201-02</a> Fuel Tank assembly AP	<a href="#">Buy now</a>
2	<a href="#">6YL-24610-00</a> Cap Assembly	<a href="#">Buy now</a>
3	<a href="#">6YL-24641-00</a> Gasket, cap 1	<a href="#">Buy now</a>
4	<a href="#">6YL-24260-01</a> Fuel meter assembly	<a href="#">Buy now</a>
5	<a href="#">90157-05M16</a> Screw, pan head	<a href="#">Buy now</a>
6	<a href="#">6YL-24329-00</a> Seal	<a href="#">Buy now</a>
7	<a href="#">6YL-24268-01</a> Gasket, fuel meter	<a href="#">Buy now</a>
8	<a href="#">6YL-24306-52</a> Fuel pipe comp. 1 AP	<a href="#">Buy now</a>

## Fuel Tank 2



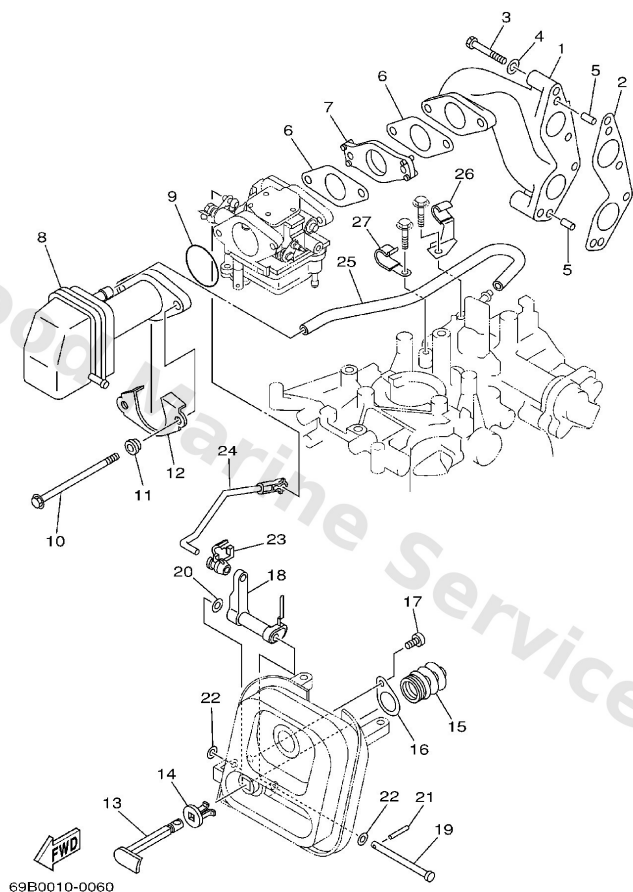
Ref	Part	
1	<a href="#">6YK-24201-10</a> Fuel Tank assembly (25L) AP *ECM-"F15A ONLY"	<a href="#">Buy now</a>
2	<a href="#">6YL-24268-01</a> Gasket, fuel meter	<a href="#">Buy now</a>
3	<a href="#">6YK-24610-10</a> Cap assembly WITHOUT INDICATOR	<a href="#">Buy now</a>
4	<a href="#">6YL-24641-00</a> Gasket, cap 1	<a href="#">Buy now</a>
5	<a href="#">6YK-24260-01</a> Fuel meter assembly	<a href="#">Buy now</a>
6	<a href="#">90157-05M16</a> Screw, pan head	<a href="#">Buy now</a>
7	<a href="#">6YL-24329-00</a> Seal	<a href="#">Buy now</a>
8	<a href="#">6YL-24306-52</a> Fuel pipe comp. 1 AP *ECM-"F15A ONLY"	<a href="#">Buy now</a>

# Generator



Ref	Part	
1	<a href="#">66M-85550-00</a> Rotor assembly WITHOUT RING GEAR	<a href="#">Buy now</a>
1	<a href="#">66M-85550-10</a> Rotor assembly WITH RING GEAR	<a href="#">Buy now</a>
2	<a href="#">66M-85520-00</a> Coil, charge	<a href="#">Buy now</a>
3	<a href="#">66M-85580-00</a> Coil, pulser	<a href="#">Buy now</a>
4	<a href="#">66M-85533-00</a> Coil, Lighting 6A	<a href="#">Buy now</a>
4	<a href="#">66M-85533-10</a> Coil, Lighting 10A	<a href="#">Buy now</a>
5	<a href="#">97095-06025</a> Bolt	<a href="#">Buy now</a>
6	<a href="#">92995-06100</a> Washer(6a1)	<a href="#">Buy now</a>
7	<a href="#">92995-06600</a> Washer, plain (646)	<a href="#">Buy now</a>
8	<a href="#">97095-06016</a> Bolt, hexagon deep recess	<a href="#">Buy now</a>
10	<a href="#">97095-06030</a> Bolt(jf7)	<a href="#">Buy now</a>
10	<a href="#">97095-06040</a> Bolt (682)	<a href="#">Buy now</a>
12	<a href="#">90280-05013</a> Key, woodruff	<a href="#">Buy now</a>
13	<a href="#">90179-16M05</a> Nut (689)	<a href="#">Buy now</a>
14	<a href="#">90201-16M44</a> Washer (689)	<a href="#">Buy now</a>

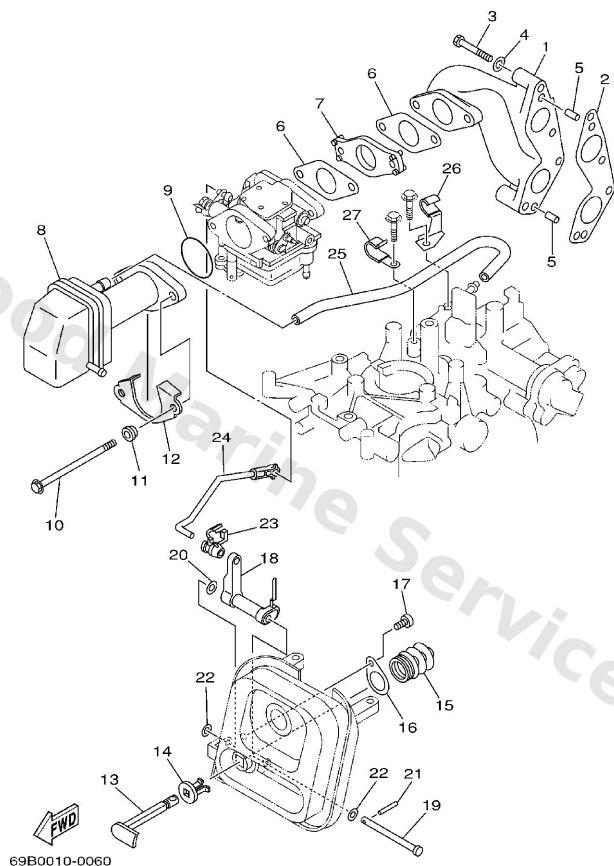
# Intake



**B3**

Ref	Part	
1	<a href="#">66M-13641-00-94</a> Manifold 1	<a href="#">Buy now</a>
2	<a href="#">66M-13645-00</a> Gasket, manifold 1	<a href="#">Buy now</a>
3	<a href="#">97095-06040</a> Bolt (682)	<a href="#">Buy now</a>
4	<a href="#">92995-06600</a> Washer, plain (646)	<a href="#">Buy now</a>
5	<a href="#">93606-12019</a> Pin, dowel (614)	<a href="#">Buy now</a>
6	<a href="#">66M-13646-00</a> Gasket, manifold 2	<a href="#">Buy now</a>
7	<a href="#">66M-14271-00</a> Insulator F9.9C,F15A	<a href="#">Buy now</a>
7	<a href="#">69V-14271-00</a> Insulator F13.5A	<a href="#">Buy now</a>
8	<a href="#">66M-14440-00</a> Silencer assembly, intake	<a href="#">Buy now</a>
9	<a href="#">93210-35M86</a> O-ring(6I2)	<a href="#">Buy now</a>
10	<a href="#">90119-06M76</a> Bolt, with washer	<a href="#">Buy now</a>
11	<a href="#">90387-06M79</a> Collar	<a href="#">Buy now</a>
12	<a href="#">66M-14477-00</a> Plate	<a href="#">Buy now</a>
13	<a href="#">66M-41271-00</a> Knob, choke	<a href="#">Buy now</a>
14	<a href="#">689-41273-00</a> Grommet	<a href="#">Buy now</a>

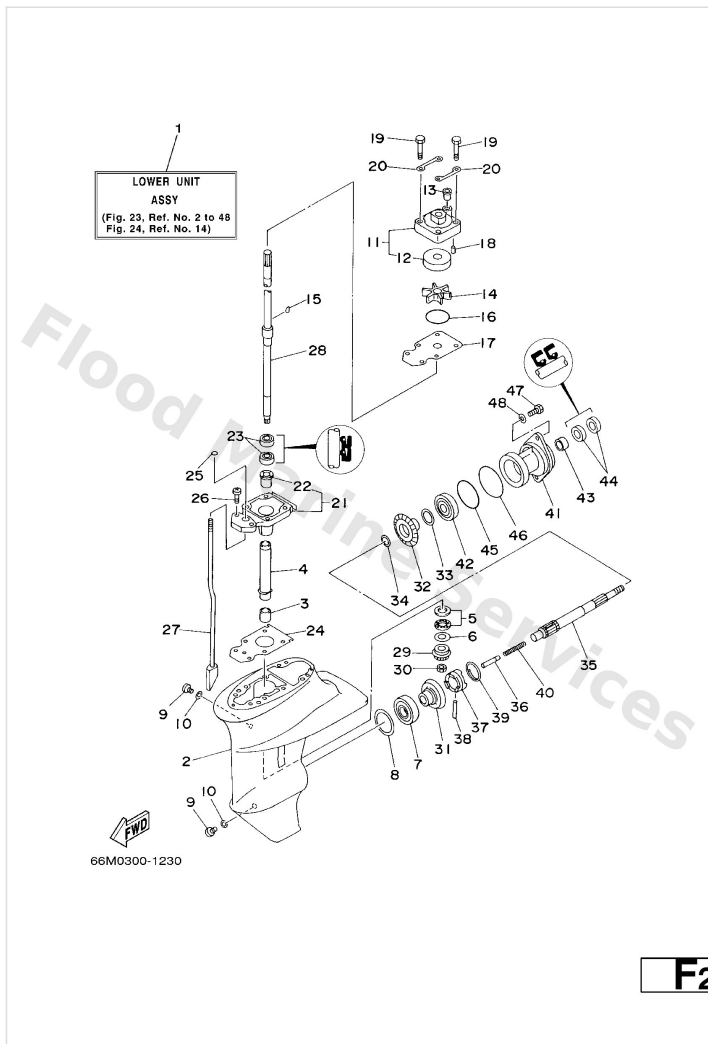
# Intake



**B3**

Ref	Part	
15	<a href="#">66M-41292-00</a> Bush 2	<a href="#">Buy now</a>
16	<a href="#">66M-41298-00</a> Washer 2	<a href="#">Buy now</a>
17	<a href="#">97780-50510</a> Screw, tapping(6u1)	<a href="#">Buy now</a>
18	<a href="#">66M-41252-00</a> Lever, choke 1	<a href="#">Buy now</a>
19	<a href="#">90240-05M20</a> Pin, clevis	<a href="#">Buy now</a>
20	<a href="#">90206-05005</a> Washer, wave(656)	<a href="#">Buy now</a>
21	<a href="#">91690-20016</a> Pin, spring (677)	<a href="#">Buy now</a>
22	<a href="#">90202-05088</a> Washer, plate (666)	<a href="#">Buy now</a>
23	<a href="#">6R5-41237-00</a> Joint, link	<a href="#">Buy now</a>
24	<a href="#">66M-41256-00</a> Rod, choke 1	<a href="#">Buy now</a>
25	<a href="#">66M-15373-00</a> Pipe, breather	<a href="#">Buy now</a>
26	<a href="#">90465-08M82</a> Clamp	<a href="#">Buy now</a>
27	<a href="#">90465-08M83</a> Clamp	<a href="#">Buy now</a>

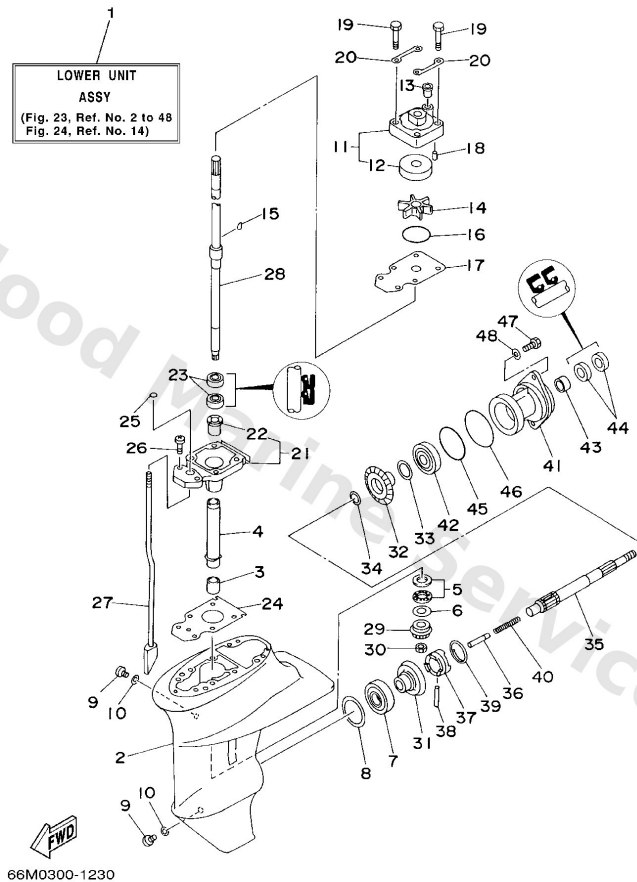
## Lower Casing. Drive 1



Ref	Part	
1	<a href="#">66M-45300-01-4D</a> Lower unit assembly S	<a href="#">Buy now</a>
1	<a href="#">66M-45300-11-4D</a> Lower unit assembly L	<a href="#">Buy now</a>
2	<a href="#">63V-45311-01-4D</a> Casing, lower L	<a href="#">Buy now</a>
2	<a href="#">66M-45311-00-4D</a> Casing, lower S	<a href="#">Buy now</a>
3	<a href="#">93315-314V8</a> Bearing, needle (6e7)	<a href="#">Buy now</a>
4	<a href="#">63V-45536-00</a> Sleeve, drive shaft	<a href="#">Buy now</a>
5	<a href="#">93341-41414</a> Bearing	<a href="#">Buy now</a>
6	<a href="#">6E8-45587-10-13</a> Shim (t:1.13mm) UR	<a href="#">Buy now</a>
6	<a href="#">6E8-45587-10-20</a> Shim (t:1.20mm) UR	<a href="#">Buy now</a>
7	<a href="#">93332-00005</a> Brg,cyl-cal roller 0.19g nt	<a href="#">Buy now</a>
8	<a href="#">664-45567-01-10</a> Shim (t:0.10mm) UR	<a href="#">Buy now</a>
8	<a href="#">664-45567-01-12</a> Shim (t:0.12mm) UR	<a href="#">Buy now</a>
8	<a href="#">664-45567-01-15</a> Shim (t:0.15mm) UR	<a href="#">Buy now</a>
8	<a href="#">664-45567-01-18</a> Shim (t:0.18mm) UR	<a href="#">Buy now</a>
8	<a href="#">664-45567-01-30</a> Shim (t:0.30mm) UR	<a href="#">Buy now</a>

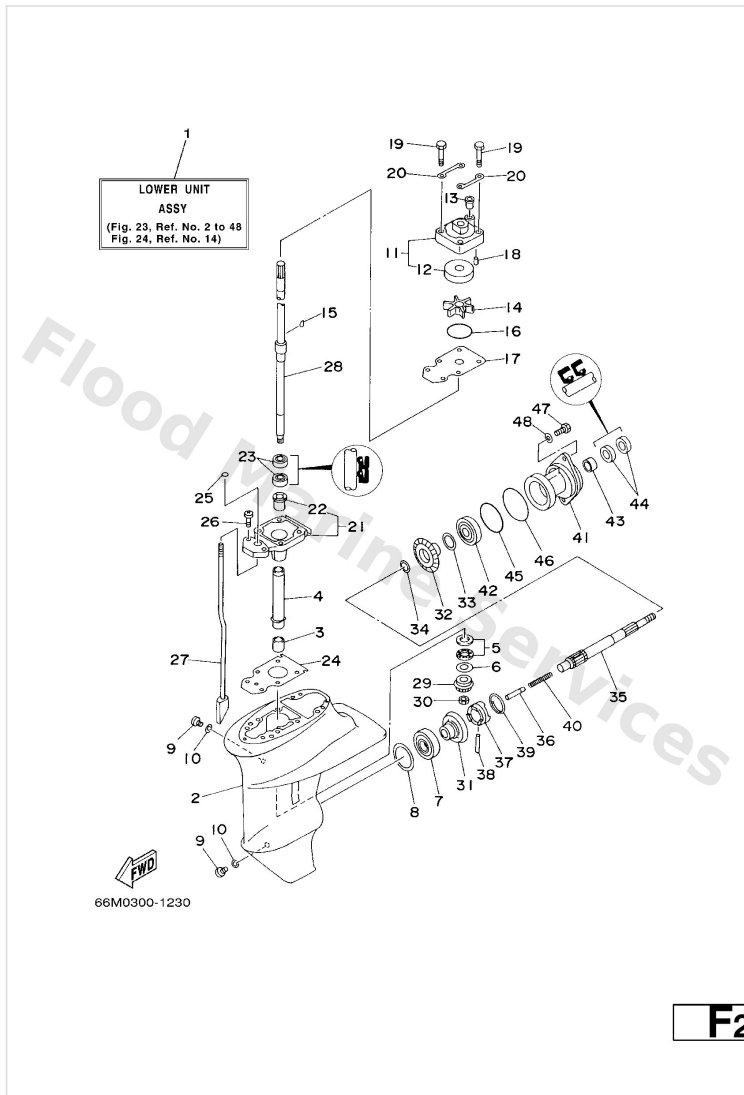


## Lower Casing. Drive 1



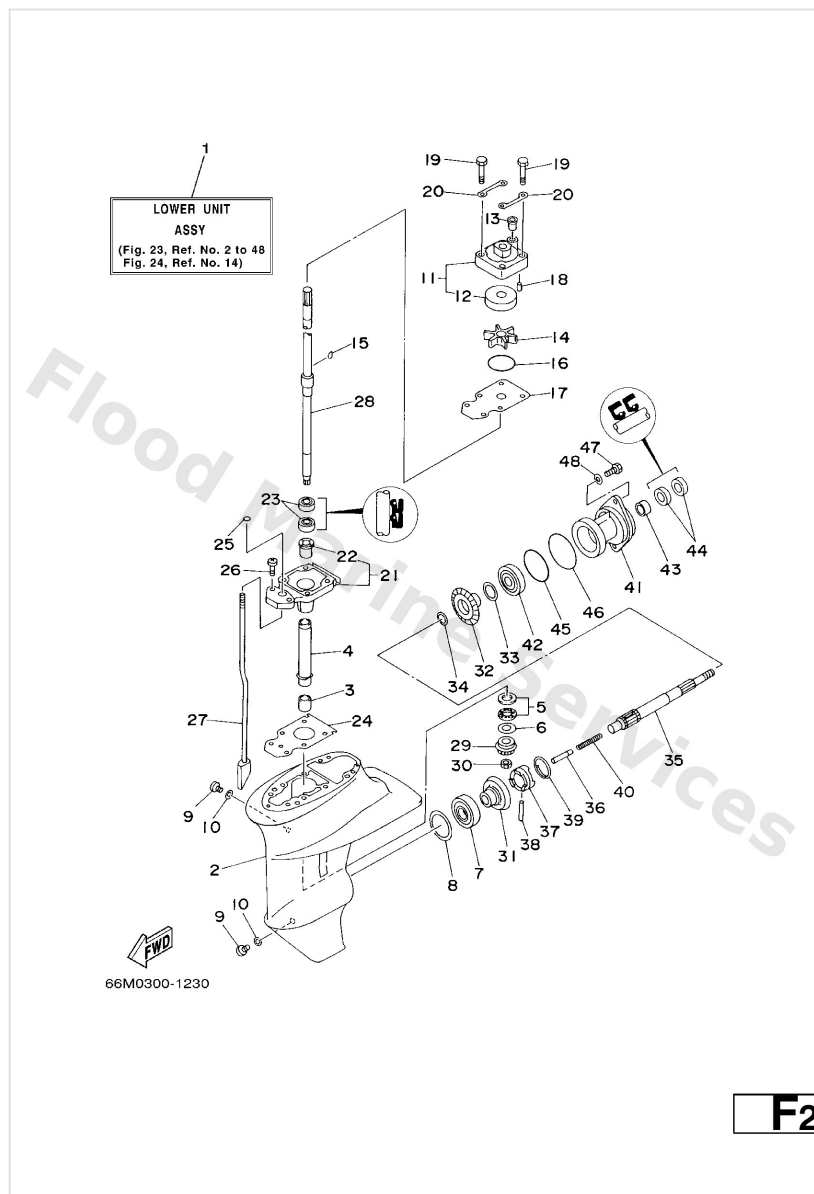
Ref	Part	
8	<a href="#">664-45567-01-40</a> Shim (t:0.40mm) UR	<a href="#">Buy now</a>
8	<a href="#">664-45567-01-50</a> Shim (t:0.50mm) UR	<a href="#">Buy now</a>
9	<a href="#">90340-08002</a> Plug, straight screw	<a href="#">Buy now</a>
10	<a href="#">90430-08020</a> Gasket	<a href="#">Buy now</a>
11	<a href="#">63V-44301-00</a> Water pump housing comp.	<a href="#">Buy now</a>
12	<a href="#">63V-44322-00</a> Insert, cartridge	<a href="#">Buy now</a>
13	<a href="#">647-44366-00</a> Damper, water seal 2	<a href="#">Buy now</a>
14	<a href="#">63V-44352-01</a> Impeller	<a href="#">Buy now</a>
15	<a href="#">664-44338-00</a> Key, woodruff	<a href="#">Buy now</a>
16	<a href="#">93210-44398</a> O-ring(55x)	<a href="#">Buy now</a>
17	<a href="#">63V-44323-00</a> Outer plate, cartridge	<a href="#">Buy now</a>
18	<a href="#">93604-12M07</a> Pin, dowel (688)	<a href="#">Buy now</a>
19	<a href="#">97080-08045</a> Bolt, hexagon	<a href="#">Buy now</a>
20	<a href="#">63V-44328-00</a> Plate	<a href="#">Buy now</a>
21	<a href="#">63V-45331-00-5B</a> Housing, bearing	<a href="#">Buy now</a>

## Lower Casing. Drive 1



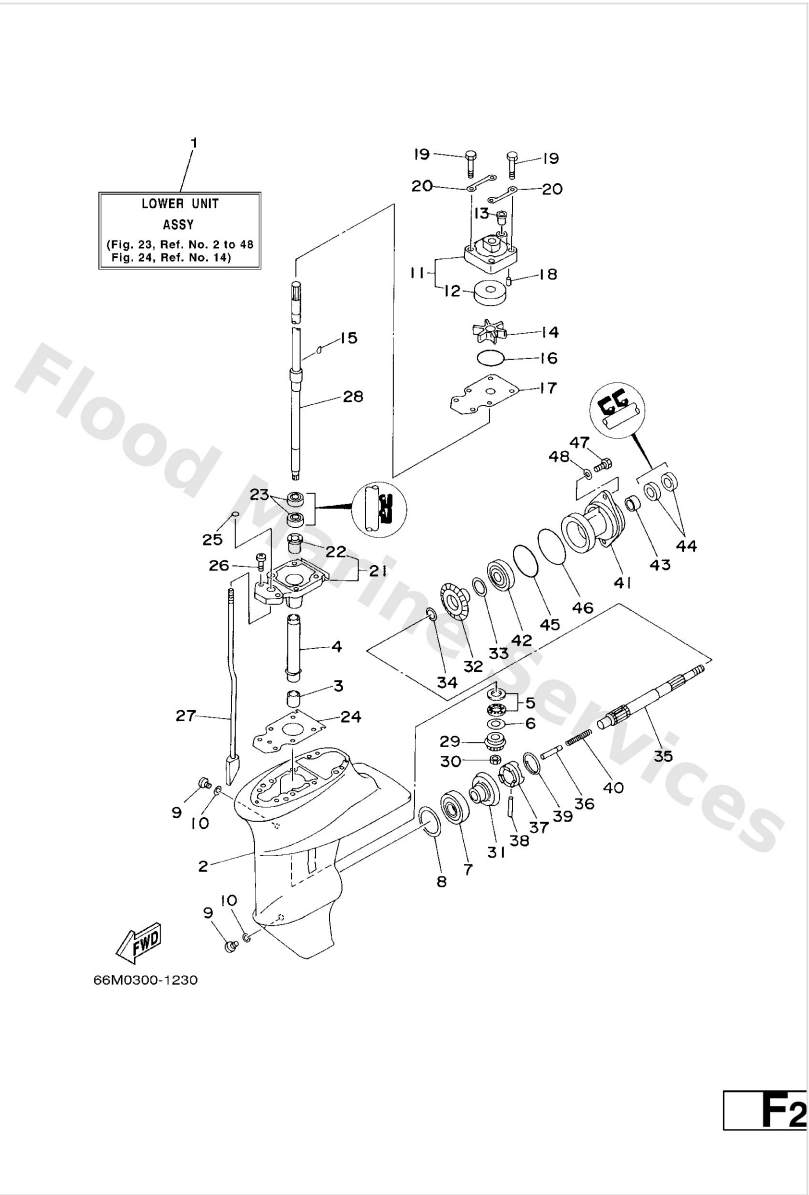
Ref	Part	
22	<a href="#">90381-14020</a> Bushing, drive shaft 1	<a href="#">Buy now</a>
23	<a href="#">93101-20048</a> Oil seal (20x30x6-648)	<a href="#">Buy now</a>
24	<a href="#">63V-45315-A0</a> Packing, lower casing	<a href="#">Buy now</a>
25	<a href="#">93210-06ME6</a> O-ring	<a href="#">Buy now</a>
26	<a href="#">97080-08025</a> Screw, bind(j36)	<a href="#">Buy now</a>
27	<a href="#">63V-44150-00</a> Shift cam assembly S	<a href="#">Buy now</a>
27	<a href="#">66M-44150-10</a> Shift cam assembly L	<a href="#">Buy now</a>
28	<a href="#">63V-45510-01</a> Drive shaft assembly S	<a href="#">Buy now</a>
28	<a href="#">63V-45510-11</a> Drive shaft assembly L	<a href="#">Buy now</a>
29	<a href="#">63V-45551-00</a> Pinion	<a href="#">Buy now</a>
30	<a href="#">90179-08M06</a> Nut (6e7)	<a href="#">Buy now</a>
31	<a href="#">6E7-45560-01</a> Gear	<a href="#">Buy now</a>
32	<a href="#">6E7-45571-00</a> Gear 2	<a href="#">Buy now</a>
33	<a href="#">626-45577-00-01</a> Shim (t:0.10mm) UR	<a href="#">Buy now</a>
33	<a href="#">626-45577-00-03</a> Shim (t:0.30mm) UR	<a href="#">Buy now</a>

## Lower Casing. Drive 1



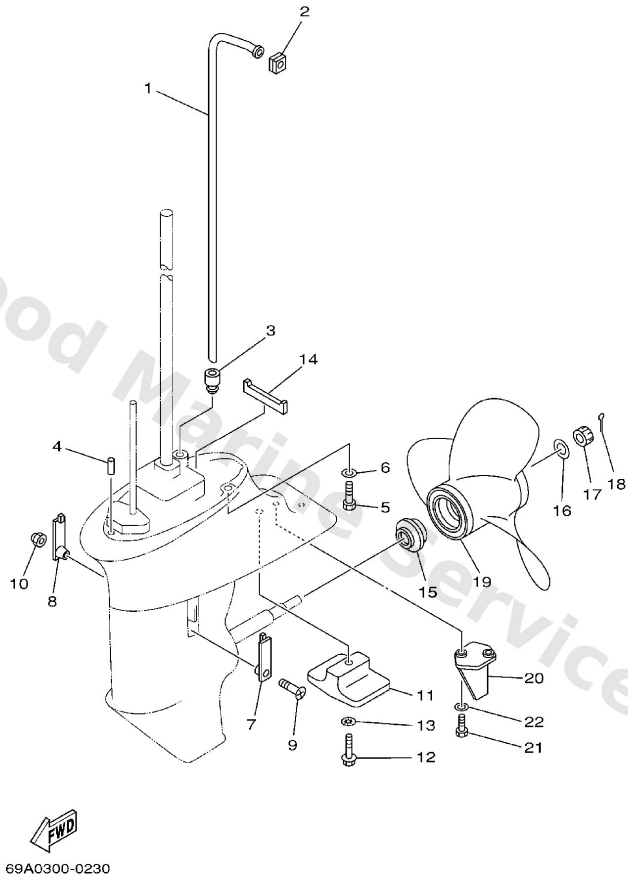
Ref	Part	
33	<a href="#">626-45577-00-05</a> Shim (t:0.50mm) UR	<a href="#">Buy now</a>
34	<a href="#">90201-17682</a> Washer, plate (2k7)	<a href="#">Buy now</a>
35	<a href="#">683-45611-00</a> Shaft propeller	<a href="#">Buy now</a>
36	<a href="#">650-45635-00</a> Plunger, shift	<a href="#">Buy now</a>
37	<a href="#">682-45631-00</a> Clutch, dog	<a href="#">Buy now</a>
38	<a href="#">90250-05010</a> Pin straight 648456320000	<a href="#">Buy now</a>
39	<a href="#">648-45633-00</a> Ring, cross pin	<a href="#">Buy now</a>
40	<a href="#">90501-14M06</a> Spring, compression	<a href="#">Buy now</a>
41	<a href="#">683-45361-02-4D</a> Cap, lower casing	<a href="#">Buy now</a>
42	<a href="#">93306-00501</a> Bearing(1ff)	<a href="#">Buy now</a>
43	<a href="#">93315-317U2</a> Brg,cyl-cal roller 14g (683)	<a href="#">Buy now</a>
44	<a href="#">93101-17054</a> Oil seal (17x30x6-650)	<a href="#">Buy now</a>
45	<a href="#">93210-57M09</a> O-ring (683)	<a href="#">Buy now</a>
46	<a href="#">93210-56M80</a> O-ring(6j8)	<a href="#">Buy now</a>
47	<a href="#">97095-06020</a> Bolt(7u8)	<a href="#">Buy now</a>

# Lower Casing. Drive 1



Ref	Part	
48	<a href="#">92995-06600</a> Washer, plain (646)	<a href="#">Buy now</a>

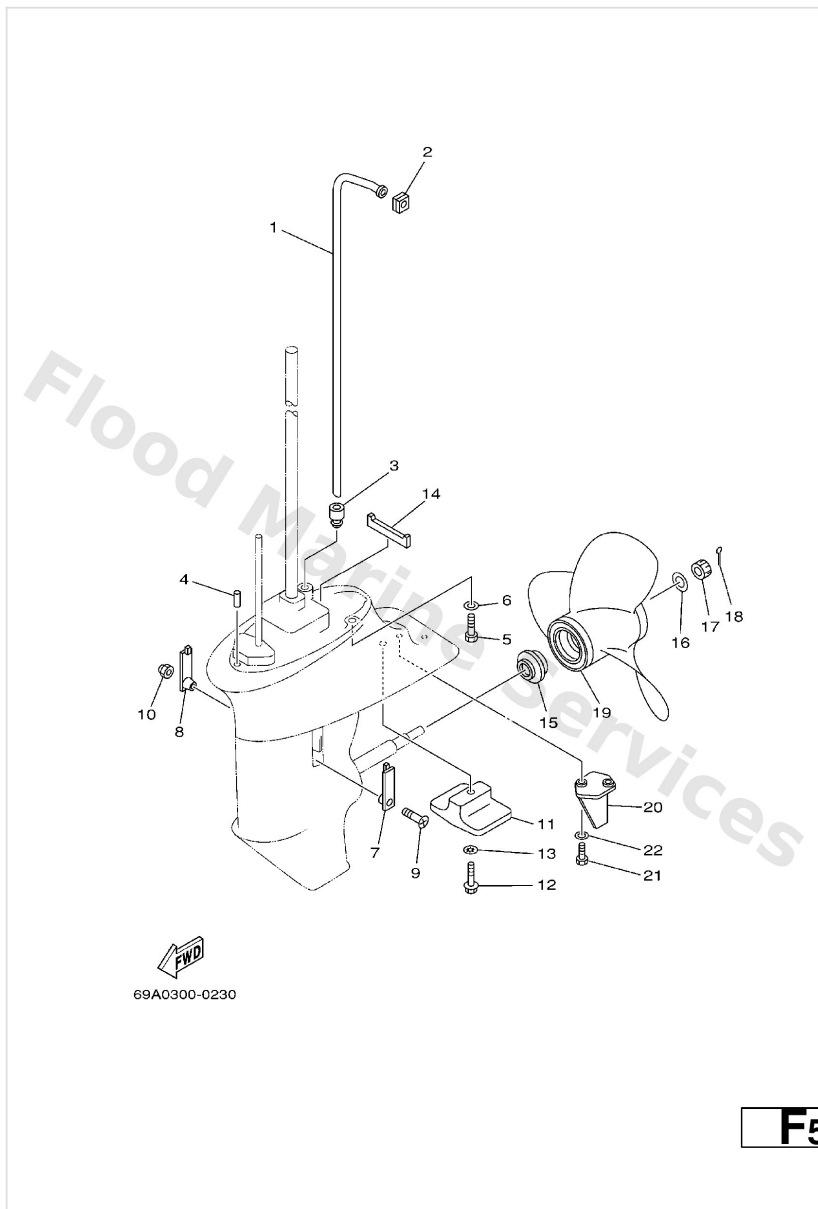
## Lower Casing. Drive 2



**F5**

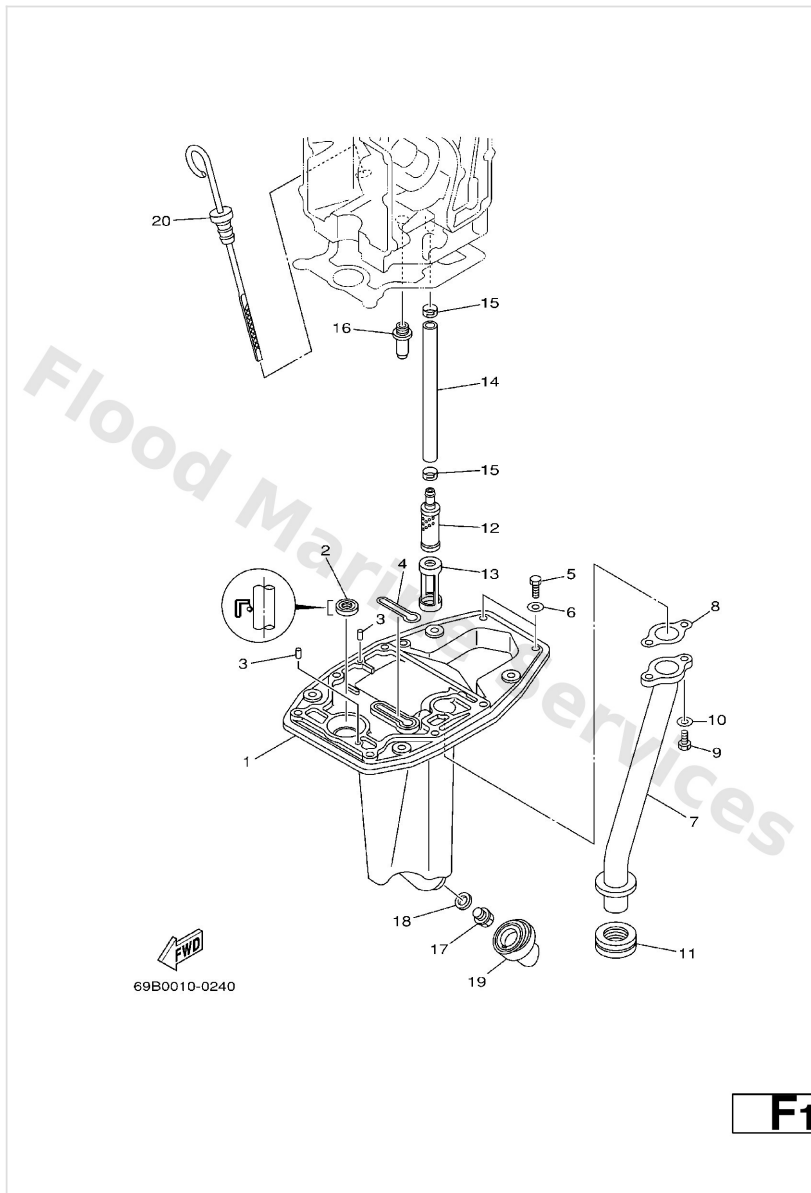
Ref	Part	
1	<a href="#">66M-44361-00</a> Tube, Water 1 S	<a href="#">Buy now</a>
1	<a href="#">66M-44361-10</a> Tube, water L	<a href="#">Buy now</a>
2	<a href="#">63V-44365-10</a> Damper, water seal 1	<a href="#">Buy now</a>
3	<a href="#">63V-44368-00</a> Rubber, water seal 4	<a href="#">Buy now</a>
4	<a href="#">93604-12M07</a> Pin, dowel (688)	<a href="#">Buy now</a>
5	<a href="#">97075-08030</a> Bolt, hexagon (fj1)	<a href="#">Buy now</a>
6	<a href="#">92995-08600</a> Washer, plain (663)	<a href="#">Buy now</a>
7	<a href="#">6G1-45214-00</a> Cover, water inlet	<a href="#">Buy now</a>
8	<a href="#">63V-45215-00</a> Cover, water inlet	<a href="#">Buy now</a>
9	<a href="#">90152-05M04</a> Screw, countersunk	<a href="#">Buy now</a>
10	<a href="#">90185-05002</a> Nut nylon (sus)(ex4)	<a href="#">Buy now</a>
11	<a href="#">61N-45251-01</a> Anode	<a href="#">Buy now</a>
12	<a href="#">95895-06030</a> Bolt, flange deep recess	<a href="#">Buy now</a>
13	<a href="#">92990-06300</a> Washer, tooth	<a href="#">Buy now</a>
14	<a href="#">63V-45375-00</a> Damper, seal	<a href="#">Buy now</a>

## Lower Casing. Drive 2



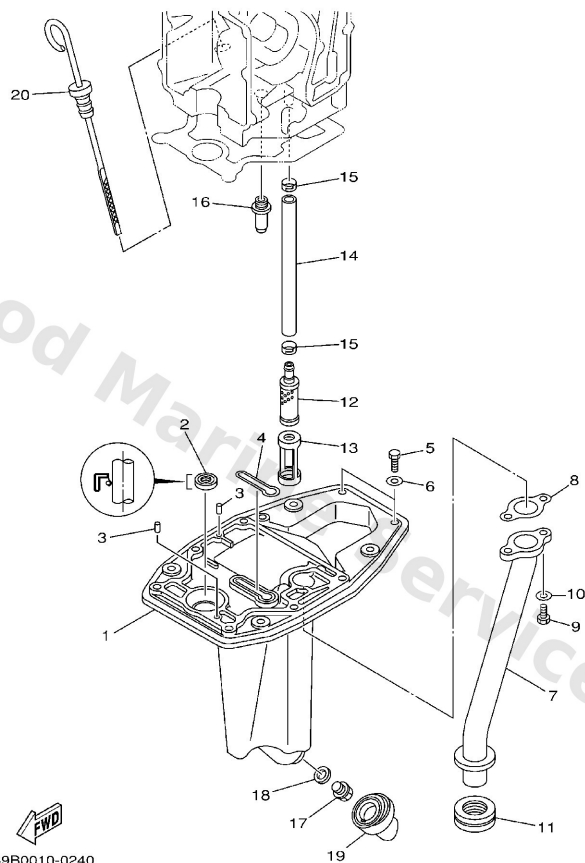
Ref	Part	
15	<a href="#">6E7-45987-01</a> Spacer	<a href="#">Buy now</a>
16	<a href="#">90201-10M01</a> Washer, plate(6m7)	<a href="#">Buy now</a>
17	<a href="#">90171-10M01</a> Nut castle (683)	<a href="#">Buy now</a>
18	<a href="#">91490-30020</a> Pin cotter	<a href="#">Buy now</a>
19	<a href="#">63V-45945-00-EL</a> Propeller (3x9-1/4 x9 -j1) UR	<a href="#">Buy now</a>
19	<a href="#">63V-45947-00-EL</a> Propeller (3x9-1/4 x8 -j) UR	<a href="#">Buy now</a>
19	<a href="#">683-45941-00-EL</a> Propeller (3x9-1/4"x12"-j) UR	<a href="#">Buy now</a>
19	<a href="#">683-45943-00-EL</a> Propeller (3x9-1/4"x10-1/2"-j) UR	<a href="#">Buy now</a>
19	<a href="#">683-45945-00-EL</a> Propeller (3X9-1/4"X9"-j) UR	<a href="#">Buy now</a>
19	<a href="#">683-45952-00-EL</a> Propeller (3X9-1/4"x9-3/4"-j) UR	<a href="#">Buy now</a>
20	<a href="#">66M-45371-00</a> Tab-trim S	<a href="#">Buy now</a>
21	<a href="#">97095-06016</a> Bolt, hexagon deep recess S	<a href="#">Buy now</a>
22	<a href="#">92995-06600</a> Washer, plain (646) S	<a href="#">Buy now</a>

# Oil Pan



Ref	Part	
1	<a href="#">66M-41137-00-5B</a> Guide, exhaust	<a href="#">Buy now</a>
2	<a href="#">93101-12M63</a> Oil seal	<a href="#">Buy now</a>
3	<a href="#">93606-12019</a> Pin, dowel (614)	<a href="#">Buy now</a>
4	<a href="#">66M-11355-00</a> Seal, cylinder 1	<a href="#">Buy now</a>
5	<a href="#">97095-06020</a> Bolt(7u8)	<a href="#">Buy now</a>
6	<a href="#">92995-06600</a> Washer, plain (646)	<a href="#">Buy now</a>
7	<a href="#">66M-41131-01-94</a> Manifold, Ext. 1	<a href="#">Buy now</a>
8	<a href="#">66M-41133-00</a> Gasket, exhaust manifold 1	<a href="#">Buy now</a>
9	<a href="#">97095-06016</a> Bolt, hexagon deep recess	<a href="#">Buy now</a>
11	<a href="#">66M-41138-00</a> Seal, ext. 1	<a href="#">Buy now</a>
12	<a href="#">66M-13421-00</a> Strainer 2	<a href="#">Buy now</a>
13	<a href="#">66M-13417-00</a> Cover, Strainer	<a href="#">Buy now</a>
14	<a href="#">66M-13416-00</a> Pipe Oil 1	<a href="#">Buy now</a>
15	<a href="#">66M-24351-00</a> Band 1	<a href="#">Buy now</a>
16	<a href="#">6G8-11575-00</a> Relief valve ass'y	<a href="#">Buy now</a>

# Oil Pan

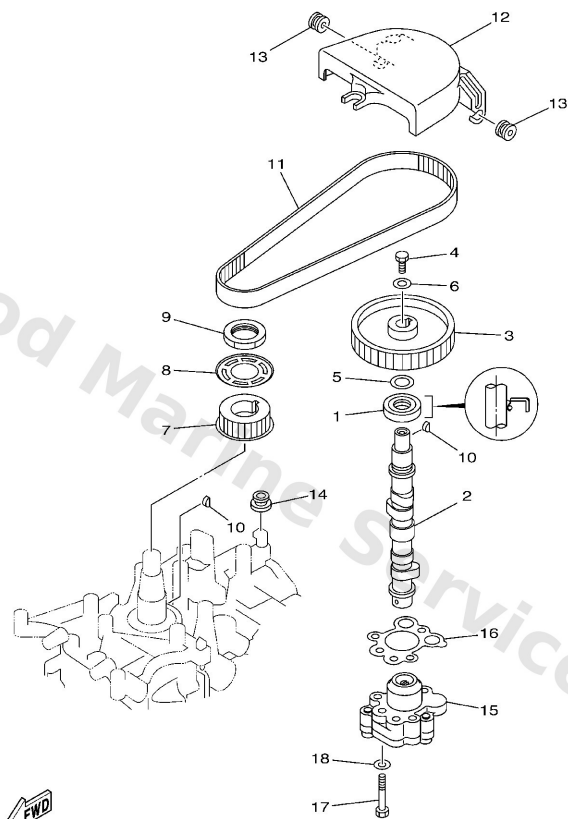


**F1**

Ref	Part	
17	<a href="#">90340-14M06</a> Plug, straight screw(62y)	<a href="#">Buy now</a>
18	<a href="#">90430-14M09</a> Gasket	<a href="#">Buy now</a>
19	<a href="#">66M-15316-00</a> Damper 1	<a href="#">Buy now</a>
20	<a href="#">66M-15362-00</a> Plug, Oil Level	<a href="#">Buy now</a>



# Oil Pump

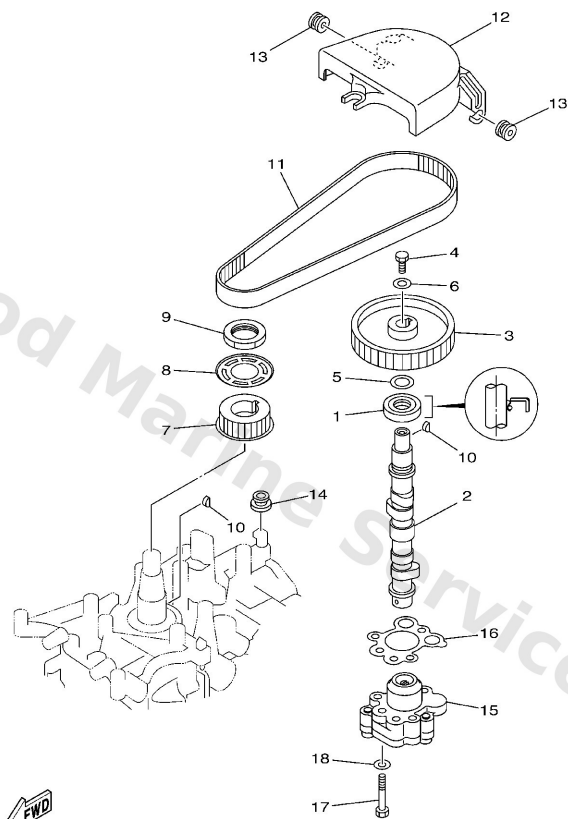


69A1300-2080

**B7**

Ref	Part	
1	<a href="#">93102-18M21</a> Oil seal (6g8)	<a href="#">Buy now</a>
2	<a href="#">66M-12170-00</a> Camshaft assembly 1	<a href="#">Buy now</a>
2	<a href="#">66M-12171-10</a> Camshaft 1	<a href="#">Buy now</a>
3	<a href="#">66M-11537-00-94</a> Gear, driven	<a href="#">Buy now</a>
4	<a href="#">97013-06016</a> Bolt, hexagon deep recess	<a href="#">Buy now</a>
5	<a href="#">90201-13201</a> Washer 6474283300	<a href="#">Buy now</a>
6	<a href="#">90201-06M94</a> Washer (6g8)	<a href="#">Buy now</a>
7	<a href="#">66M-11536-10</a> Gear, drive	<a href="#">Buy now</a>
8	<a href="#">66M-11557-00</a> Washer 1	<a href="#">Buy now</a>
9	<a href="#">90170-28M37</a> Nut	<a href="#">Buy now</a>
10	<a href="#">90280-03M01</a> Key woodruff 146115450000	<a href="#">Buy now</a>
11	<a href="#">66M-46241-00</a> Belt	<a href="#">Buy now</a>
12	<a href="#">66M-46297-00</a> Cover, dust	<a href="#">Buy now</a>
13	<a href="#">90480-10M16</a> Grommet(6j8)	<a href="#">Buy now</a>
14	<a href="#">90480-12072</a> Grommet(53y)	<a href="#">Buy now</a>

# Oil Pump

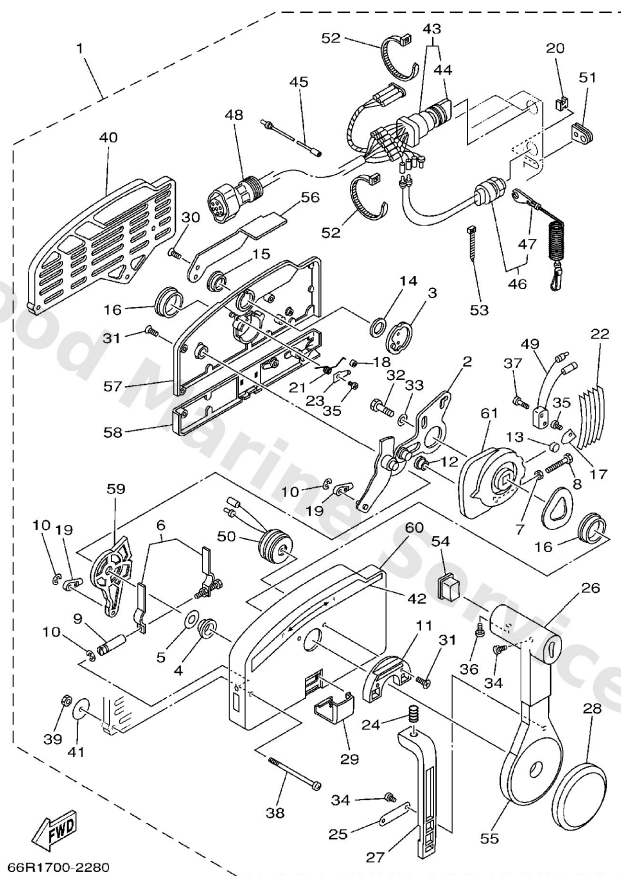


69A1300-2080

**B7**

Ref	Part	
15	<a href="#">66M-13300-10</a> Oil Pump assembly	<a href="#">Buy now</a>
16	<a href="#">66M-13329-10</a> Gasket, pump cover	<a href="#">Buy now</a>
17	<a href="#">97095-06035</a> Bolt(j52)	<a href="#">Buy now</a>
18	<a href="#">92995-06600</a> Washer, plain (646)	<a href="#">Buy now</a>

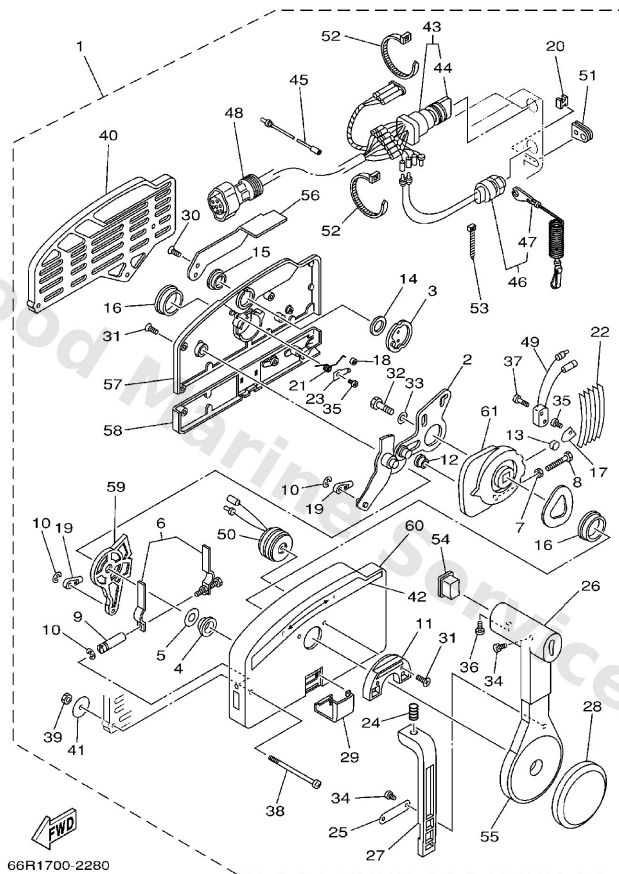
# Remote Control Assy



**A7**

Ref	Part	
1	<a href="#">703-48203-15</a> Remote control assembly (7p) AP	<a href="#">Buy now</a>
2	<a href="#">703-48261-01</a> Arm, throttle	<a href="#">Buy now</a>
3	<a href="#">703-48153-00</a> Shaft, free accel.	<a href="#">Buy now</a>
4	<a href="#">703-48235-00</a> Bushing	<a href="#">Buy now</a>
5	<a href="#">703-48268-00</a> Spacer 3	<a href="#">Buy now</a>
6	<a href="#">703-48264-00</a> Throttle, friction	<a href="#">Buy now</a>
7	<a href="#">95380-05600</a> Nut, hexagon (663)	<a href="#">Buy now</a>
8	<a href="#">97380-05025</a> Bolt	<a href="#">Buy now</a>
9	<a href="#">703-48265-00</a> Shaft Friction	<a href="#">Buy now</a>
10	<a href="#">93430-06024</a> Circlip (701)	<a href="#">Buy now</a>
11	<a href="#">703-48245-00</a> Plate, lock	<a href="#">Buy now</a>
12	<a href="#">703-48252-00</a> Roller, cam	<a href="#">Buy now</a>
13	<a href="#">701-48248-00</a> Roller, free accel	<a href="#">Buy now</a>
14	<a href="#">703-48198-00</a> Washer, wave 3	<a href="#">Buy now</a>
15	<a href="#">703-48243-00</a> Bushing 3	<a href="#">Buy now</a>

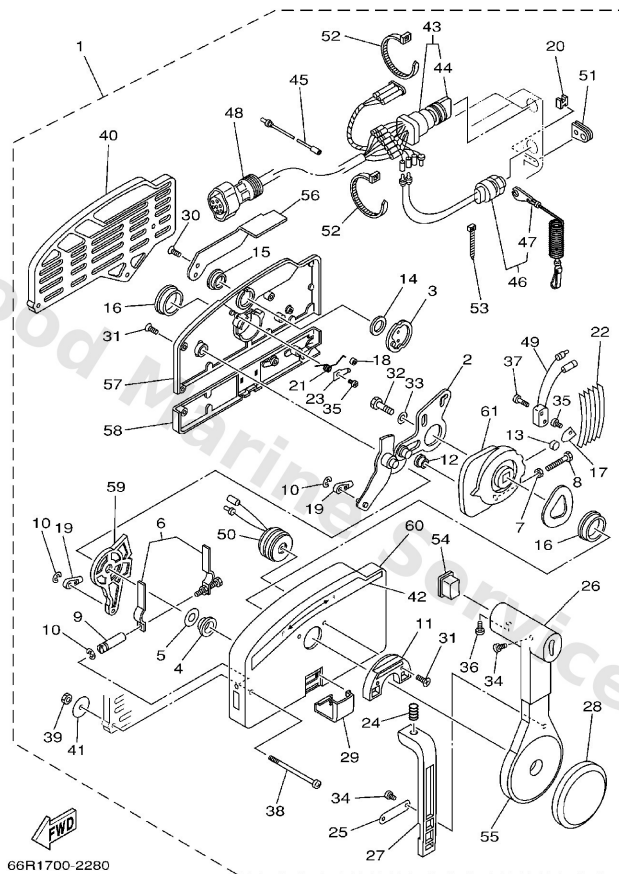
# Remote Control Assy



**A7**

Ref	Part	
16	<a href="#">703-48236-00</a> Bushing	<a href="#">Buy now</a>
17	<a href="#">703-48189-00</a> Retainer	<a href="#">Buy now</a>
18	<a href="#">703-48234-00</a> Roller, detent	<a href="#">Buy now</a>
19	<a href="#">703-48345-01</a> Cable end, remote control 2	<a href="#">Buy now</a>
20	<a href="#">703-48358-00</a> Anchor, cable	<a href="#">Buy now</a>
21	<a href="#">703-48244-00</a> Spring, free accel.	<a href="#">Buy now</a>
22	<a href="#">703-48238-00</a> Spring, detent	<a href="#">Buy now</a>
23	<a href="#">703-48246-00</a> Spacer 1	<a href="#">Buy now</a>
24	<a href="#">703-48227-00</a> Spring, neutral lock	<a href="#">Buy now</a>
25	<a href="#">703-48226-00</a> Plate, stopper	<a href="#">Buy now</a>
26	<a href="#">703-48222-00</a> Grip, control lever <b>SINGLE</b>	<a href="#">Buy now</a>
27	<a href="#">703-48223-00</a> Lock, neutral	<a href="#">Buy now</a>
28	<a href="#">703-48225-00</a> Cover	<a href="#">Buy now</a>
29	<a href="#">703-48219-00</a> Cover, lead	<a href="#">Buy now</a>
30	<a href="#">703-48281-00</a> Screw, flat head	<a href="#">Buy now</a>

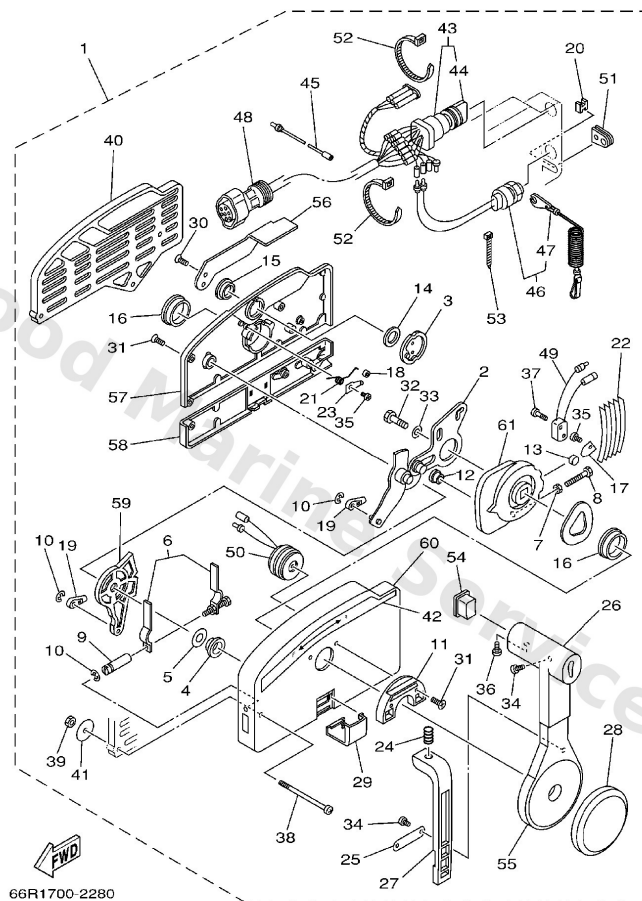
# Remote Control Assy



**A7**

Ref	Part	
31	<a href="#">703-48282-00</a> Screw	<a href="#">Buy now</a>
32	<a href="#">97380-08030</a> Bolt, hexagon (fj1)	<a href="#">Buy now</a>
33	<a href="#">92990-08600</a> Washer, plain (663)	<a href="#">Buy now</a>
34	<a href="#">98580-04010</a> Screw, pan head (e56)	<a href="#">Buy now</a>
35	<a href="#">98580-04006</a> Screw, pan head (7h3)	<a href="#">Buy now</a>
36	<a href="#">98580-05010</a> Screw, pan head(62x)	<a href="#">Buy now</a>
37	<a href="#">98580-03015</a> Screw, pan head (n151)	<a href="#">Buy now</a>
38	<a href="#">703-48291-10</a> Screw	<a href="#">Buy now</a>
39	<a href="#">95380-06600</a> Nut(661)	<a href="#">Buy now</a>
40	<a href="#">703-48293-10</a> Spacer, remote control <b>SINGLE</b>	<a href="#">Buy now</a>
41	<a href="#">701-48287-00</a> Washer 1	<a href="#">Buy now</a>
42	<a href="#">703-48215-00</a> Graphic	<a href="#">Buy now</a>
43	<a href="#">703-82510-33</a> Main switch assembly	<a href="#">Buy now</a>
44	<a href="#">703-82577-00</a> Cap, key	<a href="#">Buy now</a>
45	<a href="#">703-82531-00</a> Wire, lead	<a href="#">Buy now</a>

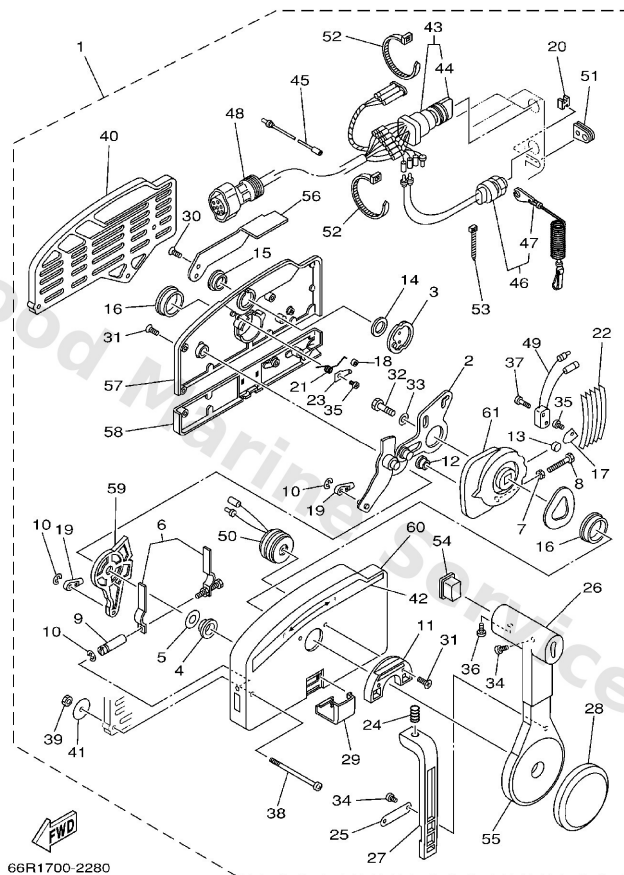
# Remote Control Assy



**A7**

Ref	Part	
46	<a href="#">688-82575-01</a> Engine stop switch assembly	<a href="#">Buy now</a>
47	<a href="#">682-82556-00</a> Lanyard, stop switch	<a href="#">Buy now</a>
48	<a href="#">688-82586-21</a> Extension, wire harness L)5M (7P)	<a href="#">Buy now</a>
49	<a href="#">703-82540-00</a> Neutral switch assembly	<a href="#">Buy now</a>
50	<a href="#">703-83383-02</a> Buzzer	<a href="#">Buy now</a>
51	<a href="#">703-48284-00</a> Grommet	<a href="#">Buy now</a>
52	<a href="#">703-82591-00</a> Band	<a href="#">Buy now</a>
53	<a href="#">703-82592-00</a> Band	<a href="#">Buy now</a>
54	<a href="#">703-48224-00</a> Cover, control lever WITHOUT PT/T SW.	<a href="#">Buy now</a>
55	<a href="#">703-48221-00</a> Grip	<a href="#">Buy now</a>
56	<a href="#">703-48152-00</a> Knob, free accel	<a href="#">Buy now</a>
57	<a href="#">703-48212-00</a> Rear housing	<a href="#">Buy now</a>
58	<a href="#">703-48213-00</a> Back, panel	<a href="#">Buy now</a>
59	<a href="#">703-48271-00</a> Arm, shift	<a href="#">Buy now</a>
60	<a href="#">703-48211-01</a> Housing,1	<a href="#">Buy now</a>

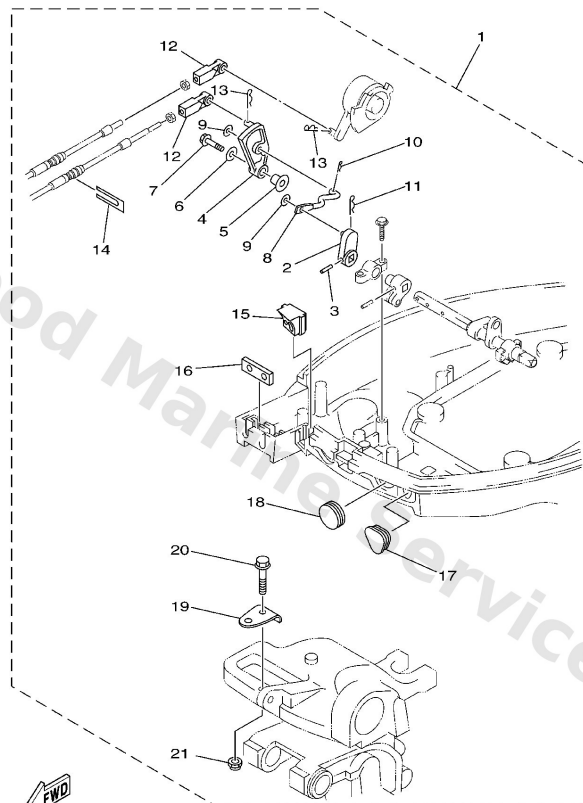
# Remote Control Assy



**A7**

Ref	Part	
61	<a href="#">703-48232-00</a> Drive gear	<a href="#">Buy now</a>

## Remote Control Attachment



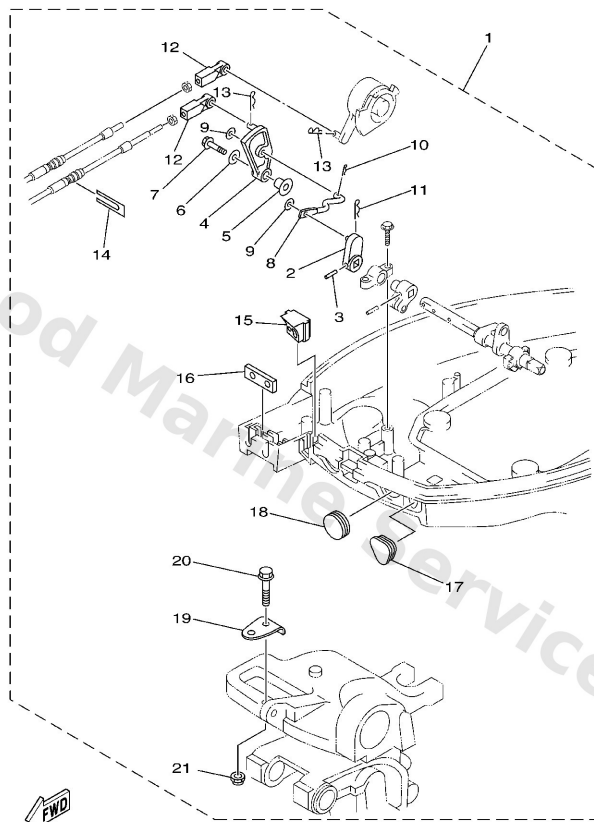
66M0010-9190

**E2**

Ref	Part	
1	<a href="#">66M-48501-00</a> Remote cont. attachment assembly. AP	<a href="#">Buy now</a>
2	<a href="#">65W-44142-00</a> Joint	<a href="#">Buy now</a>
3	<a href="#">90254-03M05</a> Pin, spring	<a href="#">Buy now</a>
4	<a href="#">65W-44125-00</a> Lever, shift rod	<a href="#">Buy now</a>
5	<a href="#">90387-06M29</a> Collar (6a0)	<a href="#">Buy now</a>
6	<a href="#">90201-06M31</a> Washer (6a0)	<a href="#">Buy now</a>
7	<a href="#">97595-06525</a> Bolt, hexagon w/w deep recess	<a href="#">Buy now</a>
8	<a href="#">66M-44192-00</a> Joint, rod 1	<a href="#">Buy now</a>
9	<a href="#">90201-05M06</a> Washer, plate(61u)	<a href="#">Buy now</a>
10	<a href="#">90468-10005</a> Pin, hair 6264123500	<a href="#">Buy now</a>
11	<a href="#">90468-18008</a> Clip 620436610000	<a href="#">Buy now</a>
12	<a href="#">663-48344-00</a> Cable end, remote control	<a href="#">Buy now</a>
14	<a href="#">6H3-48538-00</a> Clamp, cable	<a href="#">Buy now</a>
15	<a href="#">66M-42725-20</a> Grommet	<a href="#">Buy now</a>
16	<a href="#">62Y-42727-00</a> Grommet	<a href="#">Buy now</a>



## Remote Control Attachment

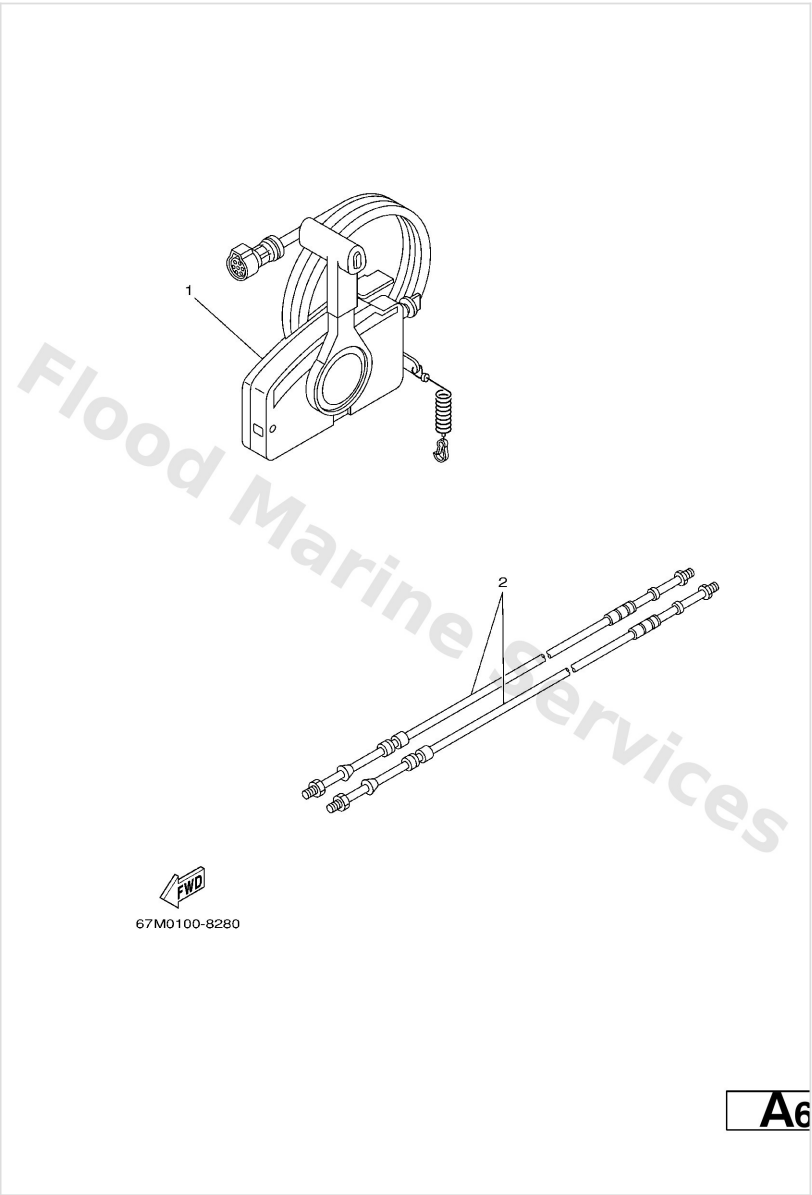


66M0010-9190

**E2**

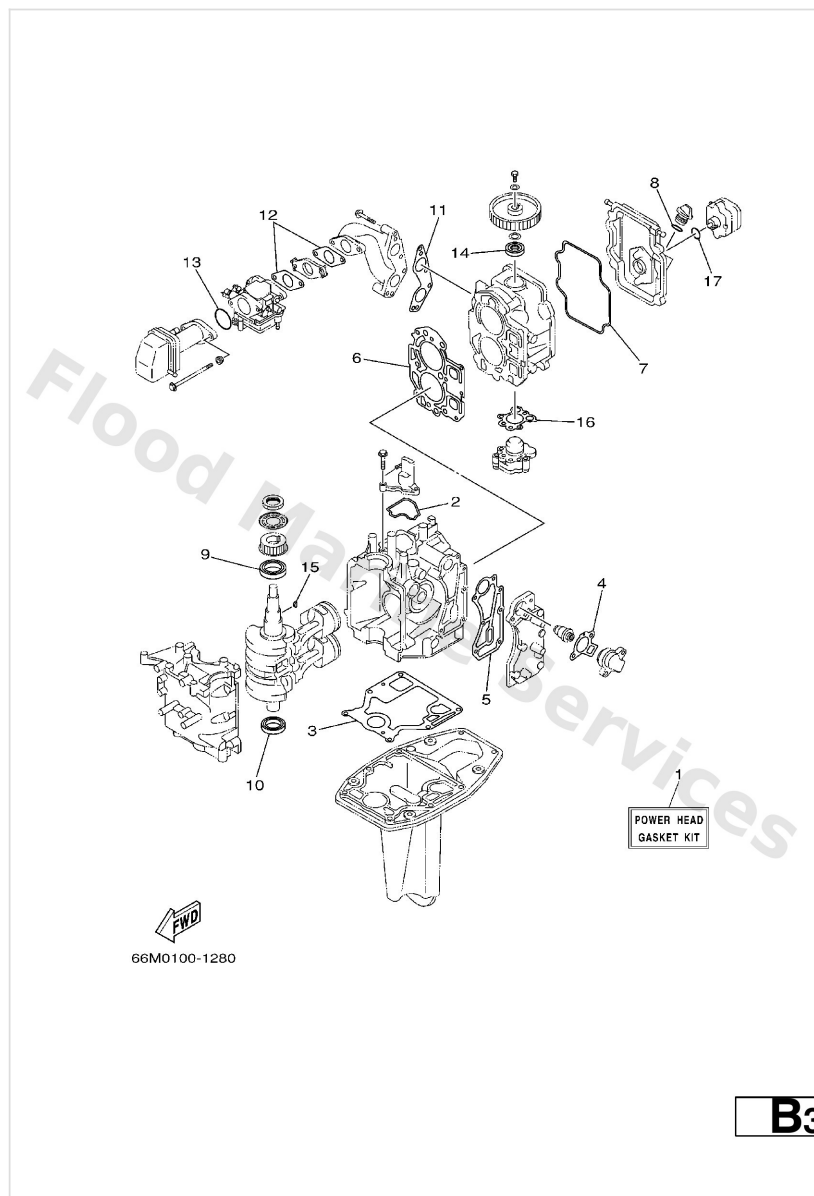
Ref	Part	
17	<a href="#">65W-26326-10</a> Grommet	<a href="#">Buy now</a>
18	<a href="#">65W-42726-10</a> Grommet	<a href="#">Buy now</a>
19	<a href="#">63V-48511-01</a> Hook, steering	<a href="#">Buy now</a>
20	<a href="#">97575-08535</a> Bolt(70w)	<a href="#">Buy now</a>
21	<a href="#">90185-08057</a> Nut, nylon (6j8)	<a href="#">Buy now</a>

# Remote Control Box



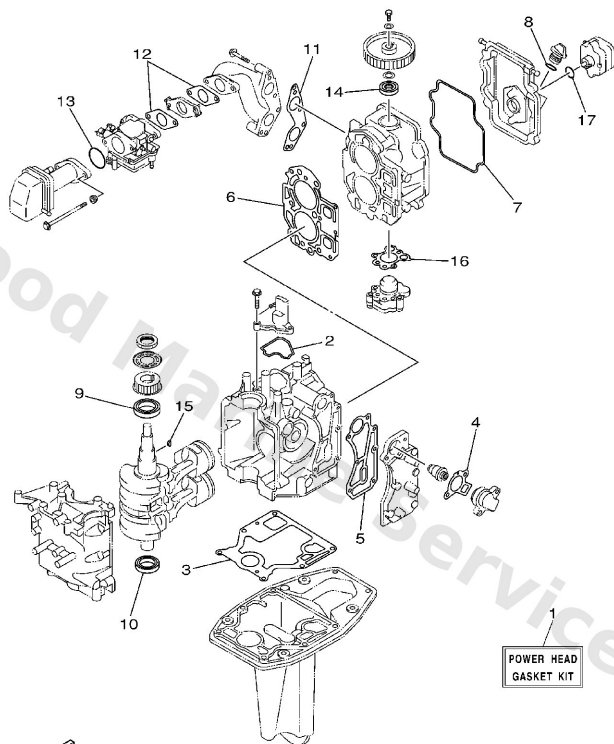
Ref	Part	
1	<a href="#">703-48203-15</a> Remote control assembly (7p) AP	<a href="#">Buy now</a>
2	<a href="#">701-48310-80</a> Cable, Remote Control L=10F UR	<a href="#">Buy now</a>
2	<a href="#">701-48310-90</a> Cable, Remote Control L=11F UR	<a href="#">Buy now</a>
2	<a href="#">701-48320-00</a> Cable, Remote Control L=12F UR	<a href="#">Buy now</a>

# Repair Kit 1



Ref	Part	
1	<a href="#">66M-W0001-01</a> Power head gasket kit	<a href="#">Buy now</a>
2	<a href="#">66M-11357-00</a> Seal, cylinder 3	<a href="#">Buy now</a>
3	<a href="#">66M-11351-00</a> Gasket, cylinder	<a href="#">Buy now</a>
4	<a href="#">62Y-12414-00</a> Gasket, cover	<a href="#">Buy now</a>
5	<a href="#">66M-41114-00</a> Gasket, exhaust outer cover	<a href="#">Buy now</a>
6	<a href="#">66M-11181-00</a> Gasket, cylinder head 1	<a href="#">Buy now</a>
7	<a href="#">66M-11356-00</a> Seal, cylinder 2	<a href="#">Buy now</a>
8	<a href="#">93210-24M79</a> O-ring	<a href="#">Buy now</a>
9	<a href="#">93102-35M51</a> Oil seal	<a href="#">Buy now</a>
10	<a href="#">93102-25M52</a> Oil seal	<a href="#">Buy now</a>
11	<a href="#">66M-13645-00</a> Gasket, manifold 1	<a href="#">Buy now</a>
12	<a href="#">66M-13646-00</a> Gasket, manifold 2	<a href="#">Buy now</a>
13	<a href="#">93210-35M86</a> O-ring(6I2)	<a href="#">Buy now</a>
14	<a href="#">93102-18M21</a> Oil seal (6g8)	<a href="#">Buy now</a>
15	<a href="#">90280-03M01</a> Key woodruff 146115450000	<a href="#">Buy now</a>

## Repair Kit 1

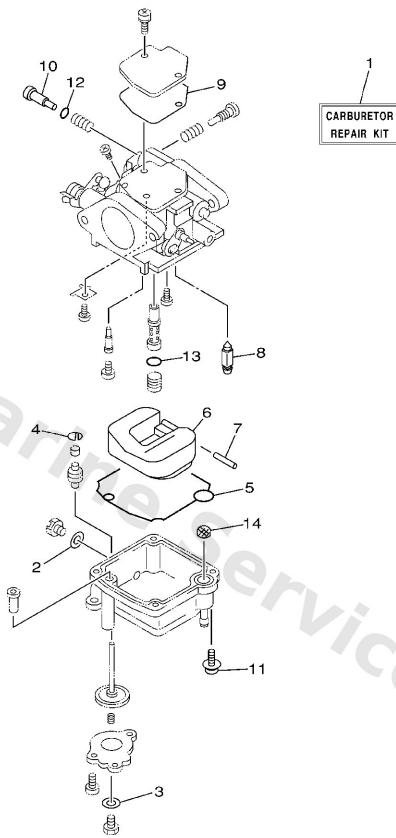


66M0100-1280

**B3**

Ref	Part	
16	<a href="#">66M-13329-10</a> Gasket, pump cover	<a href="#">Buy now</a>
17	<a href="#">93210-20M65</a> O-ring	<a href="#">Buy now</a>

## Repair Kit 2

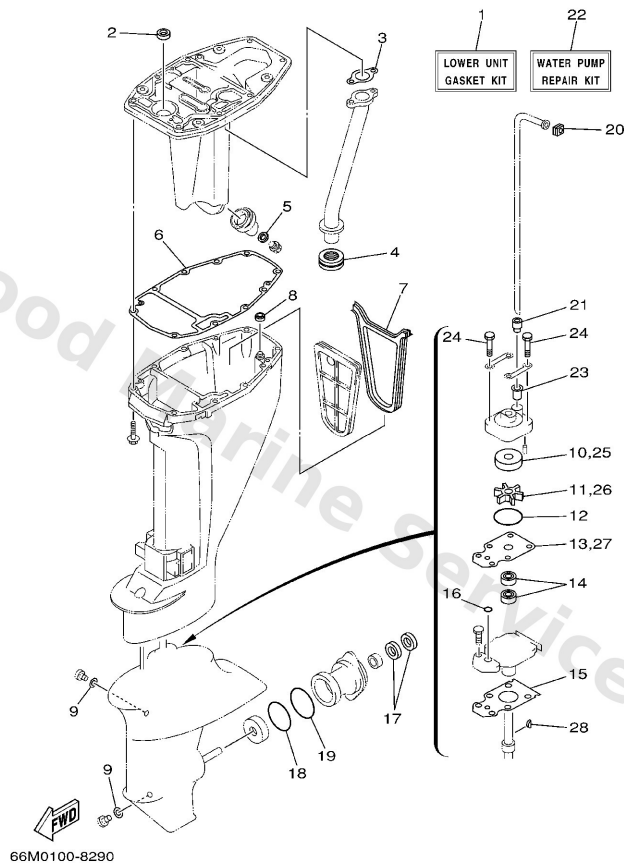


66M0100-8280

**B4**

Ref	Part	
1	<a href="#">66M-W0093-01</a> Carburetor repair kit	<a href="#">Buy now</a>
2	<a href="#">66M-14398-00</a> Gasket	<a href="#">Buy now</a>
3	<a href="#">6L2-14398-00</a> Gasket	<a href="#">Buy now</a>
4	<a href="#">66M-14377-00</a> Stopper	<a href="#">Buy now</a>
5	<a href="#">66M-14384-00</a> Gasket, float chamber	<a href="#">Buy now</a>
6	<a href="#">6L2-14385-00</a> Float	<a href="#">Buy now</a>
7	<a href="#">6E5-14386-01</a> Pin, float	<a href="#">Buy now</a>
8	<a href="#">6L2-14392-00</a> Valve, needle	<a href="#">Buy now</a>
9	<a href="#">62Y-14399-00</a> Gasket	<a href="#">Buy now</a>
10	<a href="#">5H0-14323-00</a> Pilot screw set	<a href="#">Buy now</a>
11	<a href="#">97980-04112</a> Screw, pan head (686)	<a href="#">Buy now</a>
12	<a href="#">62Y-14397-00</a> O-ring	<a href="#">Buy now</a>
13	<a href="#">6F5-14397-00</a> O-ring	<a href="#">Buy now</a>
14	<a href="#">66M-14827-00</a> Filter	<a href="#">Buy now</a>

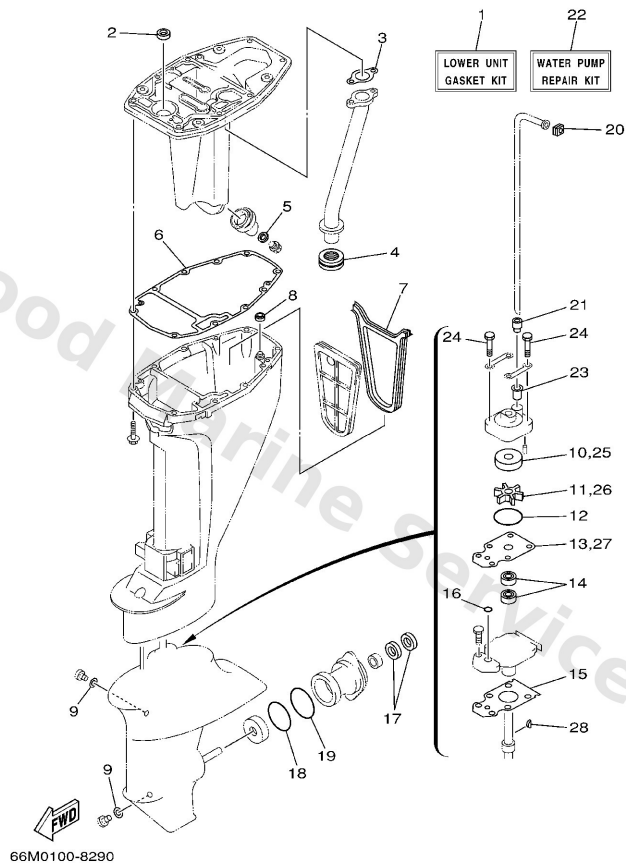
## Repair Kit 3



**B5**

Ref	Part	
1	<a href="#">66M-W0001-20</a> Lower Unit Gasket Kit	<a href="#">Buy now</a>
2	<a href="#">93101-12M63</a> Oil seal	<a href="#">Buy now</a>
3	<a href="#">66M-41133-00</a> Gasket, exhaust manifold 1	<a href="#">Buy now</a>
4	<a href="#">66M-41138-00</a> Seal, ext. 1	<a href="#">Buy now</a>
5	<a href="#">90430-14M09</a> Gasket	<a href="#">Buy now</a>
6	<a href="#">66M-45113-00</a> Gasket, upper casing	<a href="#">Buy now</a>
7	<a href="#">66M-45115-00</a> Gasket, upper casing	<a href="#">Buy now</a>
8	<a href="#">66M-45128-00</a> Seal 2	<a href="#">Buy now</a>
9	<a href="#">90430-08020</a> Gasket	<a href="#">Buy now</a>
10	<a href="#">63V-44322-00</a> Insert, cartridge	<a href="#">Buy now</a>
11	<a href="#">63V-44352-01</a> Impeller	<a href="#">Buy now</a>
12	<a href="#">93210-44398</a> O-ring(55x)	<a href="#">Buy now</a>
13	<a href="#">63V-44323-00</a> Outer plate, cartridge	<a href="#">Buy now</a>
14	<a href="#">93101-20048</a> Oil seal (20x30x6-648)	<a href="#">Buy now</a>
15	<a href="#">63V-45315-A0</a> Packing, lower casing	<a href="#">Buy now</a>

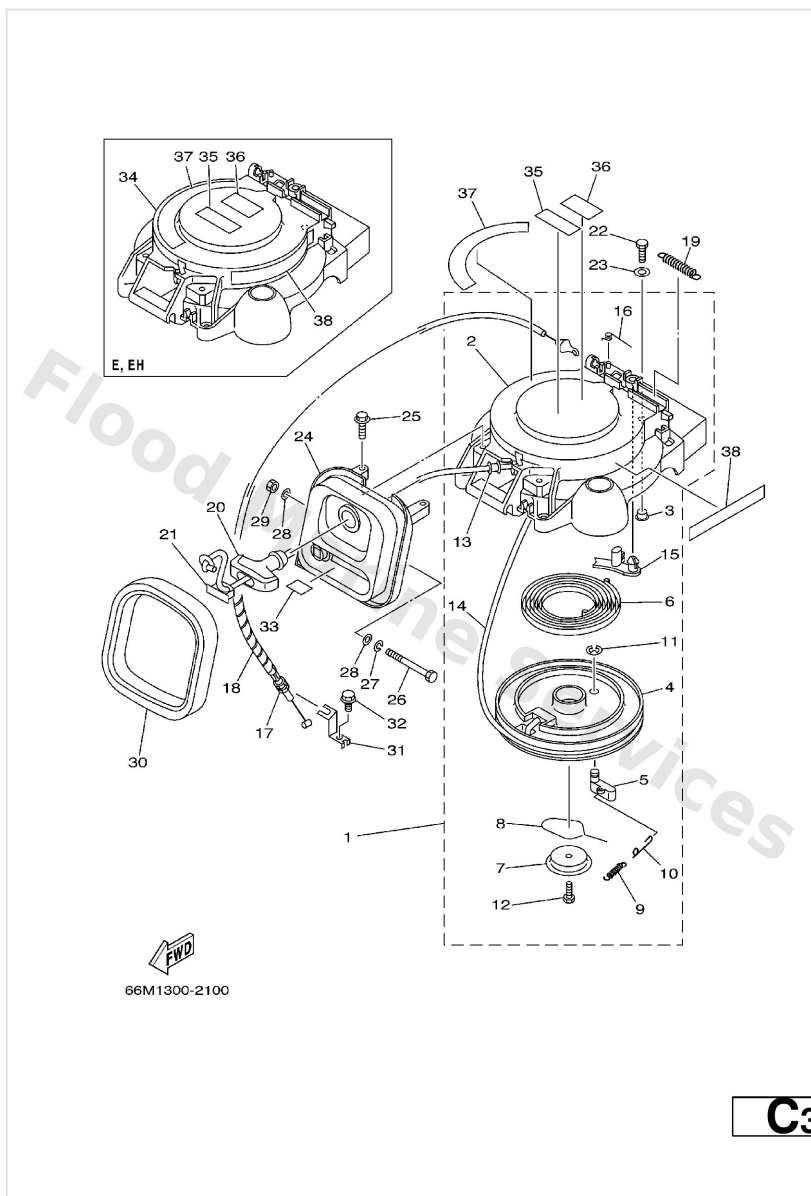
## Repair Kit 3



**B5**

Ref	Part	
16	<a href="#">93210-06ME6</a> O-ring	<a href="#">Buy now</a>
17	<a href="#">93101-17054</a> Oil seal (17x30x6-650)	<a href="#">Buy now</a>
18	<a href="#">93210-57M09</a> O-ring (683)	<a href="#">Buy now</a>
19	<a href="#">93210-56M80</a> O-ring(6j8)	<a href="#">Buy now</a>
20	<a href="#">63V-44365-10</a> Damper, water seal 1	<a href="#">Buy now</a>
21	<a href="#">63V-44368-00</a> Rubber, water seal 4	<a href="#">Buy now</a>
22	<a href="#">63V-W0078-00</a> Water pump repair kit	<a href="#">Buy now</a>
23	<a href="#">647-44366-00</a> Damper, water seal 2	<a href="#">Buy now</a>
24	<a href="#">97080-08045</a> Bolt, hexagon	<a href="#">Buy now</a>
28	<a href="#">664-44338-00</a> Key, woodruff	<a href="#">Buy now</a>

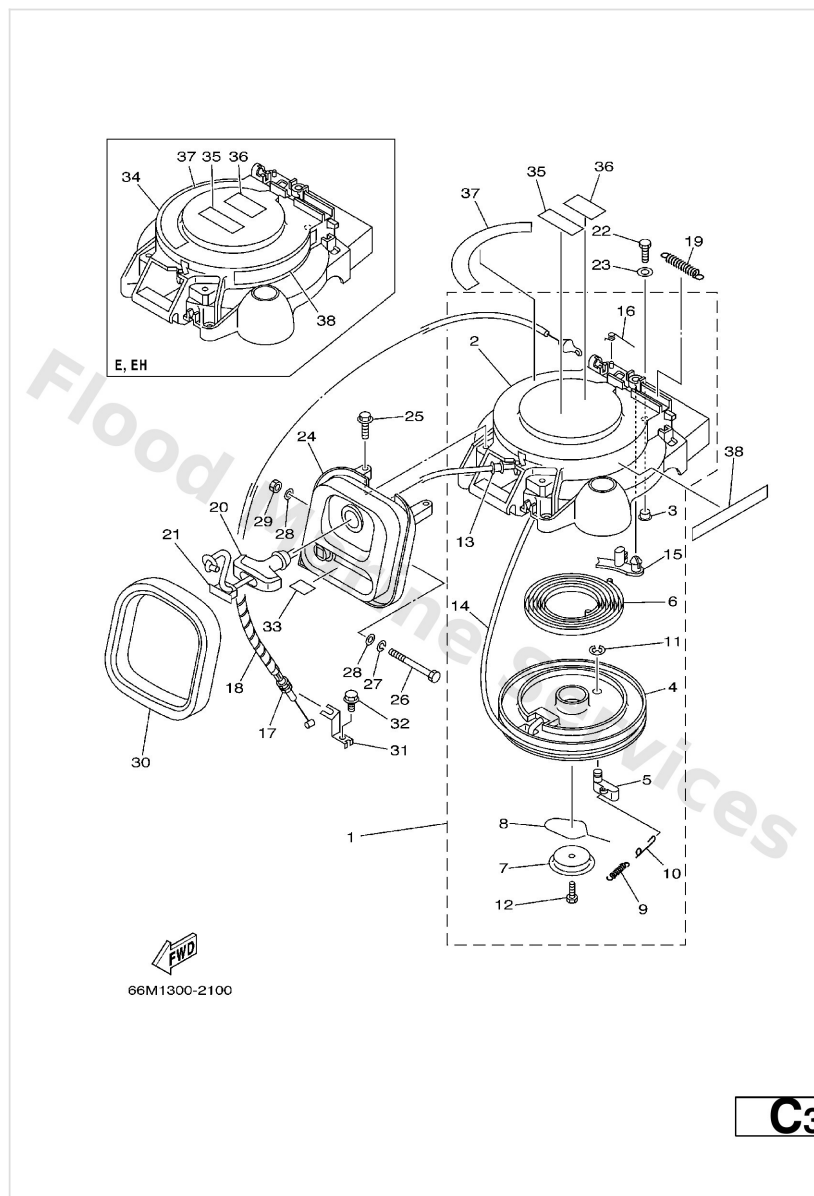
# Starter



Ref	Part	
1	<a href="#">66M-15710-01</a> Starter assembly	<a href="#">Buy now</a>
2	<a href="#">66M-15711-01</a> Case, starter	<a href="#">Buy now</a>
3	<a href="#">90387-06M05</a> Collar(6h4)	<a href="#">Buy now</a>
4	<a href="#">63V-15714-00</a> Drum, sheave	<a href="#">Buy now</a>
5	<a href="#">63V-15741-00</a> Pawl, drive	<a href="#">Buy now</a>
6	<a href="#">63V-15713-00</a> Spring, starter	<a href="#">Buy now</a>
7	<a href="#">63V-15716-00</a> Plate, drive	<a href="#">Buy now</a>
8	<a href="#">63V-15705-01</a> Spring, drive pawl	<a href="#">Buy now</a>
9	<a href="#">63V-15767-01</a> Spring	<a href="#">Buy now</a>
10	<a href="#">63V-15784-01</a> Spring, return	<a href="#">Buy now</a>
11	<a href="#">63V-15744-00</a> Circlip	<a href="#">Buy now</a>
12	<a href="#">63V-15768-00</a> Screw	<a href="#">Buy now</a>
13	<a href="#">63V-15764-00</a> Collar 1	<a href="#">Buy now</a>
14	<a href="#">*</a> item_description	<a href="#">Buy now</a>
15	<a href="#">66T-15794-00</a> Stopper	<a href="#">Buy now</a>

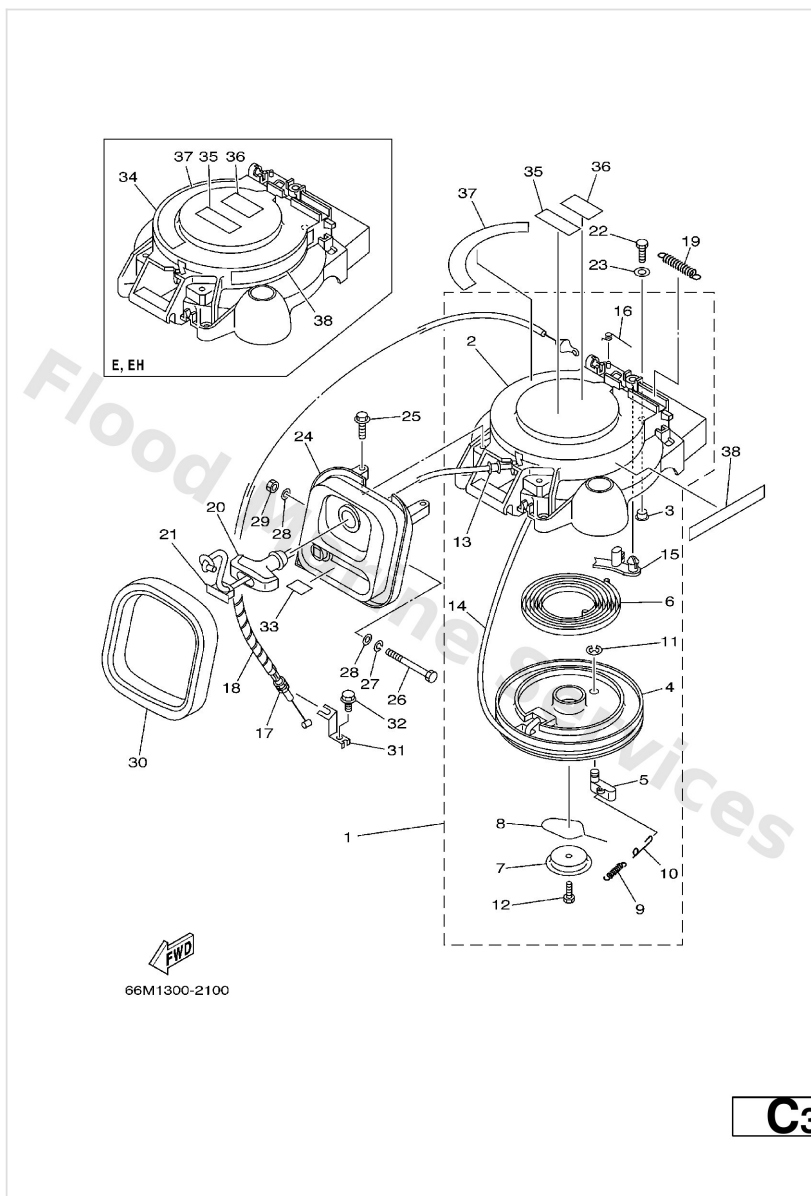


# Starter



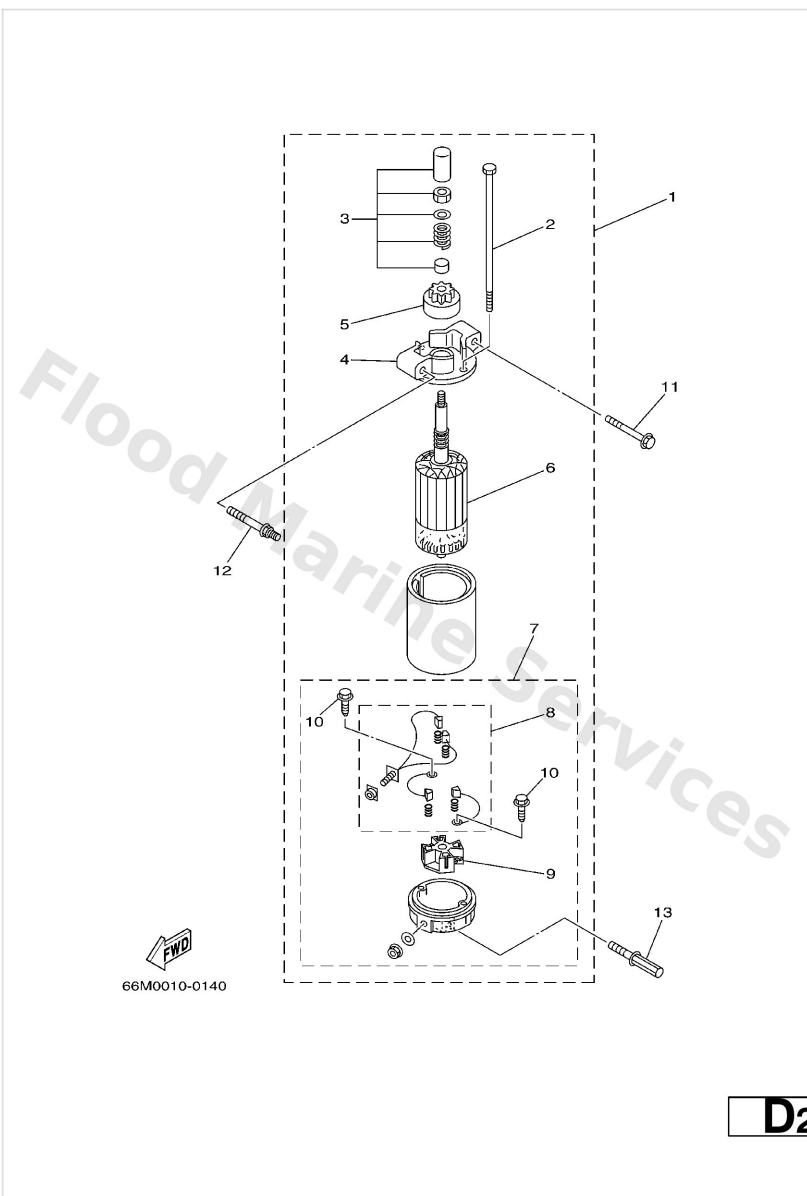
Ref	Part	
16	<a href="#">66T-15734-00</a> Spring, return	<a href="#">Buy now</a>
17	<a href="#">66M-15770-00</a> Cable comp., starter stop	<a href="#">Buy now</a>
18	<a href="#">90446-06M90</a> Hose	<a href="#">Buy now</a>
19	<a href="#">66T-15731-00</a> Retainer, spring	<a href="#">Buy now</a>
20	<a href="#">6G1-15755-00</a> Handle, starter	<a href="#">Buy now</a>
21	<a href="#">6G1-15779-00</a> Cover	<a href="#">Buy now</a>
22	<a href="#">97095-06020</a> Bolt(7u8)	<a href="#">Buy now</a>
23	<a href="#">92995-06600</a> Washer, plain (646)	<a href="#">Buy now</a>
24	<a href="#">66M-15758-00</a> Guide, Rope	<a href="#">Buy now</a>
24	<a href="#">66M-15758-10</a> Guide, Rope	<a href="#">Buy now</a>
25	<a href="#">90119-06M59</a> Bolt, with washer	<a href="#">Buy now</a>
26	<a href="#">97095-06090</a> Bolt(62y)	<a href="#">Buy now</a>
27	<a href="#">92995-06100</a> Washer(6a1)	<a href="#">Buy now</a>
28	<a href="#">90201-06M05</a> Washer, plate(6e3)	<a href="#">Buy now</a>
29	<a href="#">95380-06700</a> Nut	<a href="#">Buy now</a>

# Starter



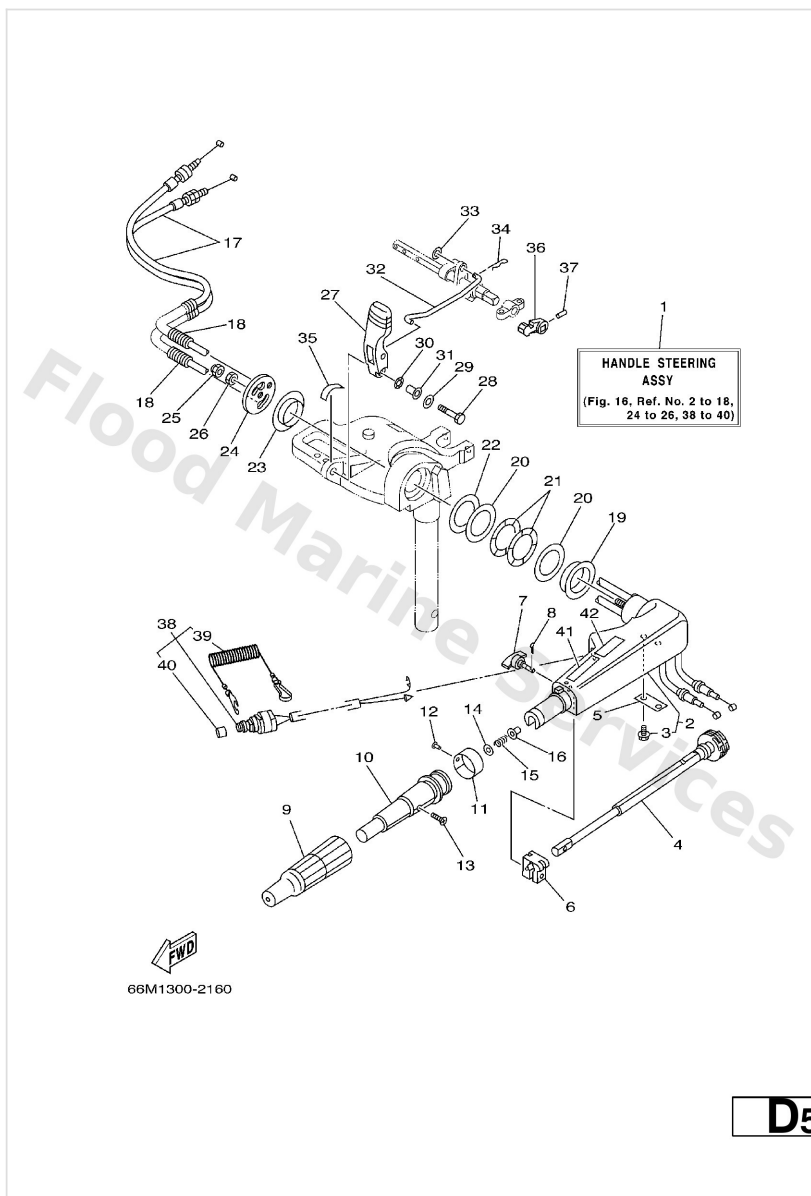
Ref	Part	
30	<a href="#">66M-15762-00</a> Seal Rubber 2	<a href="#">Buy now</a>
31	<a href="#">66M-15774-00</a> Stay 4	<a href="#">Buy now</a>
32	<a href="#">90109-06M86</a> Bolt	<a href="#">Buy now</a>
33	<a href="#">66M-84342-00</a> Seat, Emblem	<a href="#">Buy now</a>
34	<a href="#">66M-15711-10</a> Case, starter	<a href="#">Buy now</a>
35	<a href="#">6A1-83625-41</a> Mark 5	<a href="#">Buy now</a>
36	<a href="#">6A1-83625-51</a> Mark 5	<a href="#">Buy now</a>
37	<a href="#">66M-14427-60</a> Label Instruction	<a href="#">Buy now</a>
38	<a href="#">6G8-13437-64</a> Mark, caution	<a href="#">Buy now</a>

# Starting Motor



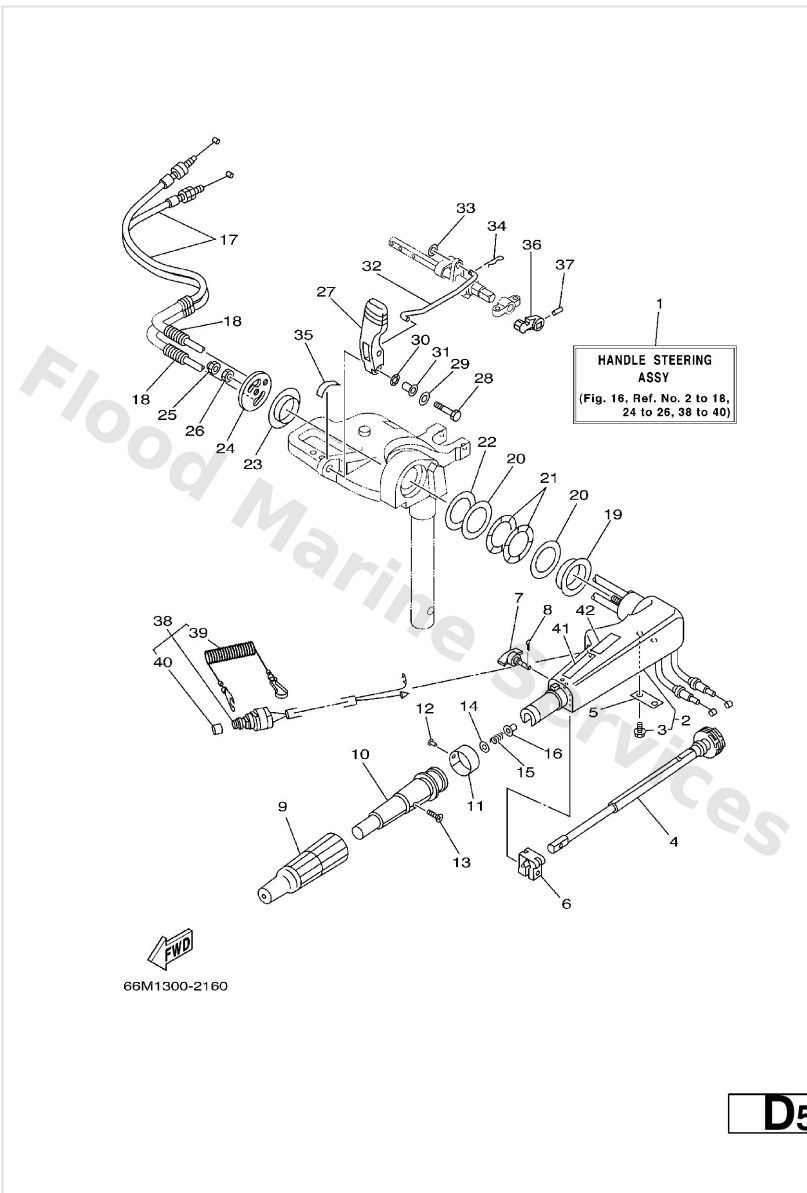
Ref	Part	
1	<a href="#">66M-81800-01</a> Starting motor assembly	<a href="#">Buy now</a>
2	<a href="#">65W-81826-00</a> Bolt	<a href="#">Buy now</a>
3	<a href="#">65W-81857-01</a> Retainer	<a href="#">Buy now</a>
4	<a href="#">66M-81830-00</a> Front bracket assembly	<a href="#">Buy now</a>
5	<a href="#">65W-81807-00</a> Gear assembly, starting motor	<a href="#">Buy now</a>
6	<a href="#">65W-81850-01</a> Armature assembly	<a href="#">Buy now</a>
7	<a href="#">66M-81820-00</a> Rear bracket assembly	<a href="#">Buy now</a>
8	<a href="#">65W-81801-00</a> Brush set	<a href="#">Buy now</a>
9	<a href="#">65W-81840-00</a> Brush holder assembly	<a href="#">Buy now</a>
10	<a href="#">65W-81825-00</a> Screw	<a href="#">Buy now</a>
11	<a href="#">90119-08M39</a> Bolt, with washer	<a href="#">Buy now</a>
12	<a href="#">90109-08M78</a> Bolt	<a href="#">Buy now</a>
13	<a href="#">90109-08M85</a> Bolt	<a href="#">Buy now</a>

# Steering



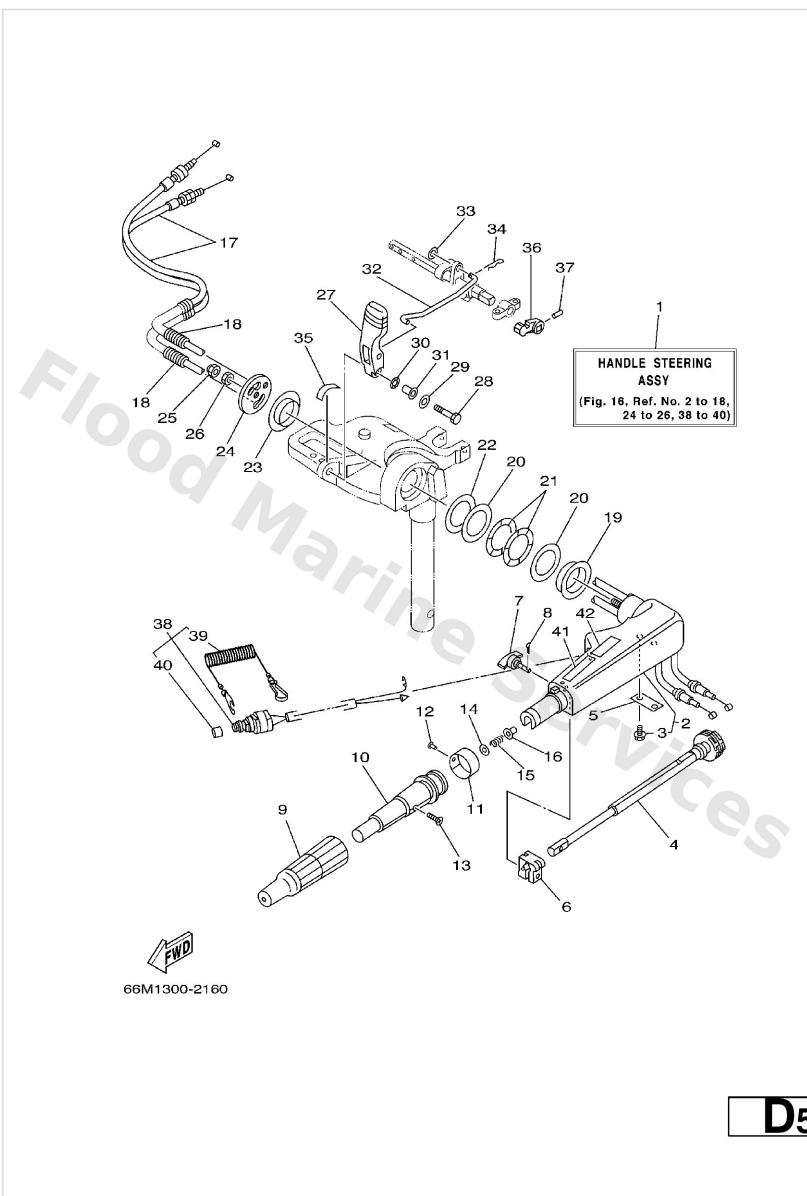
Ref	Part	
3	<a href="#">90109-06M86</a> Bolt	<a href="#">Buy now</a>
4	<a href="#">65W-42138-00</a> Lever, throttle	<a href="#">Buy now</a>
5	<a href="#">65W-42159-00</a> Stay	<a href="#">Buy now</a>
6	<a href="#">6G1-42126-00</a> Piece, friction	<a href="#">Buy now</a>
7	<a href="#">65W-42125-00</a> Bolt, friction adjusting	<a href="#">Buy now</a>
8	<a href="#">91490-16010</a> Pin, cotter	<a href="#">Buy now</a>
9	<a href="#">66M-42177-00</a> Rubber, handle	<a href="#">Buy now</a>
10	<a href="#">66M-42119-00</a> Grip, steering handle	<a href="#">Buy now</a>
11	<a href="#">689-42137-20</a> Indicator, Throttle	<a href="#">Buy now</a>
12	<a href="#">90269-02M09</a> Rivet(6I5)	<a href="#">Buy now</a>
13	<a href="#">90149-05M13</a> Screw, countersunk	<a href="#">Buy now</a>
14	<a href="#">92903-10600</a> Washer, plate	<a href="#">Buy now</a>
15	<a href="#">90501-23215</a> Spring (655)	<a href="#">Buy now</a>
16	<a href="#">90386-08032</a> Bushing (650)	<a href="#">Buy now</a>
17	<a href="#">66M-26311-00</a> Cable, throttle 1	<a href="#">Buy now</a>

# Steering



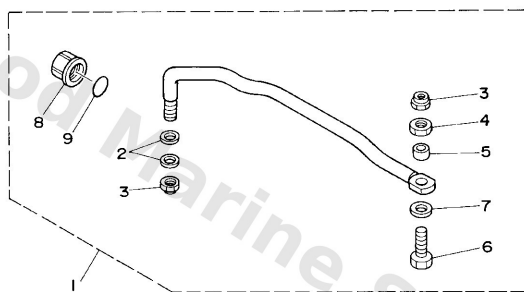
Ref	Part	
18	<a href="#">90446-10M87</a> Hose	<a href="#">Buy now</a>
19	<a href="#">90386-40MA0</a> Bushing	<a href="#">Buy now</a>
20	<a href="#">90201-43M00</a> Washer, plate	<a href="#">Buy now</a>
21	<a href="#">90206-43M22</a> Washer, wave	<a href="#">Buy now</a>
22	<a href="#">90202-43M57</a> Washer, plate	<a href="#">Buy now</a>
23	<a href="#">90386-40M99</a> Bush	<a href="#">Buy now</a>
24	<a href="#">66M-42131-01</a> Cover, handle steering	<a href="#">Buy now</a>
25	<a href="#">95780-10300</a> Nut, nylon (6e5)	<a href="#">Buy now</a>
26	<a href="#">95380-10700</a> Nut (682)	<a href="#">Buy now</a>
27	<a href="#">66M-44111-01</a> Handle, gear shift	<a href="#">Buy now</a>
28	<a href="#">97095-06030</a> Bolt(jf7)	<a href="#">Buy now</a>
29	<a href="#">92995-06600</a> Washer, plain (646)	<a href="#">Buy now</a>
30	<a href="#">90206-10M04</a> Washer, wave (676)	<a href="#">Buy now</a>
31	<a href="#">90387-06M78</a> Collar	<a href="#">Buy now</a>
32	<a href="#">66M-44124-00</a> Link, shift rod	<a href="#">Buy now</a>

# Steering



Ref	Part	
33	<a href="#">92990-06200</a> Ybs66-6 washer, plain	<a href="#">Buy now</a>
34	<a href="#">90468-18008</a> Clip 620436610000	<a href="#">Buy now</a>
35	<a href="#">6E0-44191-11</a> Indicator, shift	<a href="#">Buy now</a>
36	<a href="#">65W-44173-00</a> Lever, shift control FOR NEWTRAL SW.	<a href="#">Buy now</a>
37	<a href="#">90254-03M05</a> Pin, spring FOR NEWTRAL SW.	<a href="#">Buy now</a>
38	<a href="#">65W-82575-01</a> Engine stop switch assembly	<a href="#">Buy now</a>
39	<a href="#">682-82556-00</a> Lanyard, stop switch	<a href="#">Buy now</a>
40	<a href="#">689-8257Y-00</a> Cap	<a href="#">Buy now</a>
41	<a href="#">6E0-83627-41</a> Label, caution 7	<a href="#">Buy now</a>
42	<a href="#">6E0-83627-51</a> Label, Caution 7	<a href="#">Buy now</a>

# Steering Guide

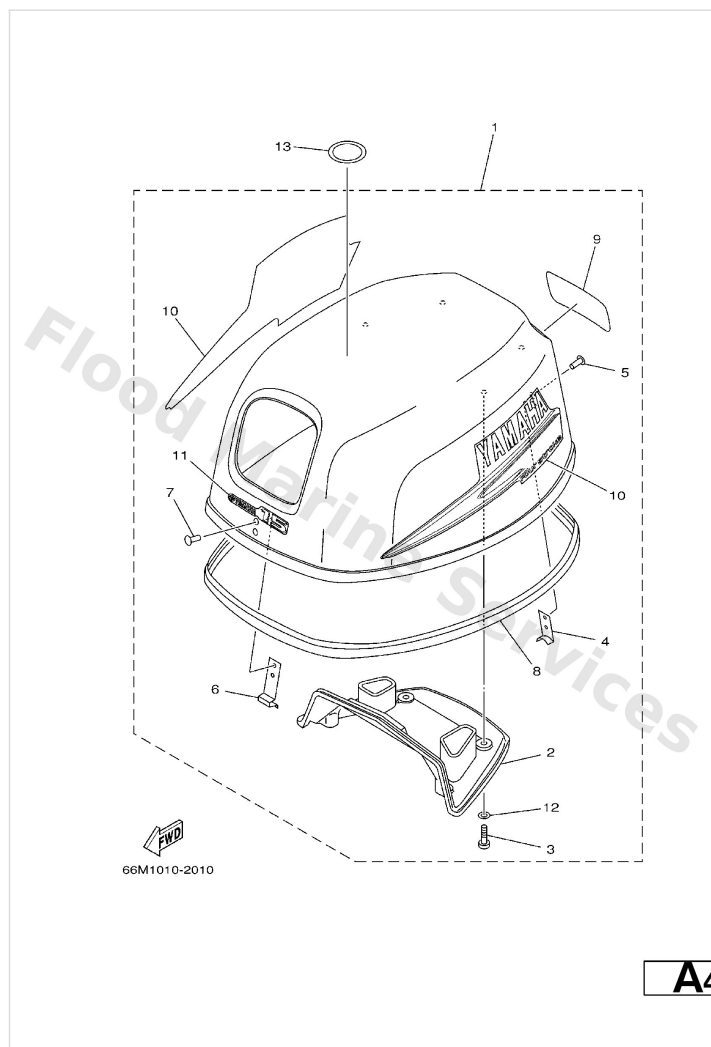


63V0100-5210

**A5**

Ref	Part	
1	<a href="#">63V-61350-00</a> Steering guide attachment kit AP	<a href="#">Buy now</a>
2	<a href="#">90201-10M20</a> Washer, plate (663)	<a href="#">Buy now</a>
3	<a href="#">90185-09M01</a> Nut, nylon (663)	<a href="#">Buy now</a>
4	<a href="#">90170-09M03</a> Nut (689)	<a href="#">Buy now</a>
5	<a href="#">90387-10M42</a> Coller (688)	<a href="#">Buy now</a>
6	<a href="#">6E5-61355-00</a> Bolt	<a href="#">Buy now</a>
7	<a href="#">90201-10M63</a> Washer, plate	<a href="#">Buy now</a>
8	<a href="#">6E5-43145-01</a> Cap, clamp bracket	<a href="#">Buy now</a>
9	<a href="#">93210-16275</a> O-ring	<a href="#">Buy now</a>

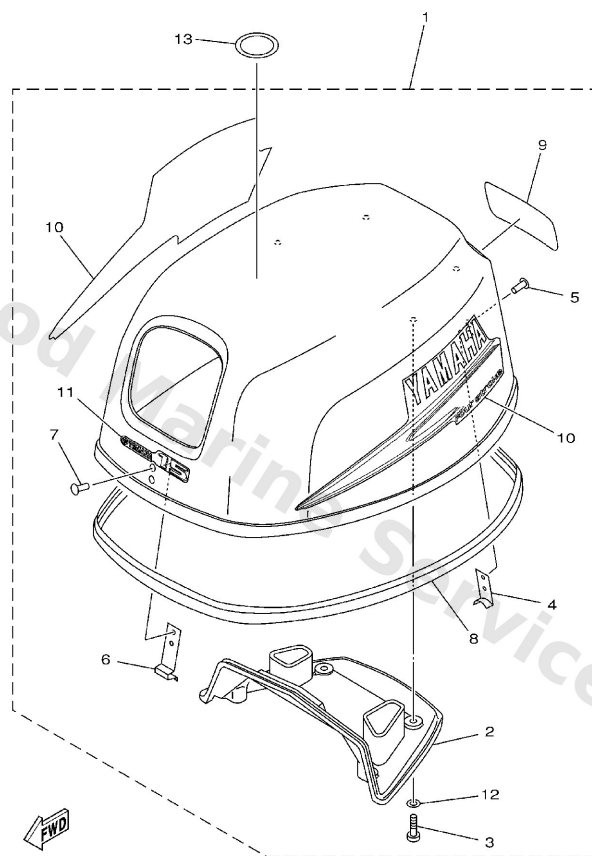
# Top Cowling



Ref	Part	
1	<a href="#">66M-42610-10-4D</a> Top Cowling assembly F15A	<a href="#">Buy now</a>
1	<a href="#">66N-42610-10-4D</a> Top Cowling assembly F9.9C	<a href="#">Buy now</a>
1	<a href="#">69V-42610-10-4D</a> Top Cowling assembly F13.5A	<a href="#">Buy now</a>
2	<a href="#">66M-42613-00</a> Molding Air Duct	<a href="#">Buy now</a>
3	<a href="#">97780-60520</a> Screw, tapping(6k8)	<a href="#">Buy now</a>
4	<a href="#">6E0-42651-02</a> Hook	<a href="#">Buy now</a>
5	<a href="#">90266-04M04</a> Rivet(6e7)	<a href="#">Buy now</a>
6	<a href="#">6E7-42652-00</a> Hook	<a href="#">Buy now</a>
8	<a href="#">66M-42615-00</a> Seal	<a href="#">Buy now</a>
9	<a href="#">66M-42678-20</a> Graphic Front F15A	<a href="#">Buy now</a>
9	<a href="#">66N-42678-20</a> Graphic, rear F9.9C	<a href="#">Buy now</a>
9	<a href="#">69V-42678-20</a> Graphic Rear F13.5A	<a href="#">Buy now</a>
10	<a href="#">66M-W0070-20</a> Graphic set	<a href="#">Buy now</a>
11	<a href="#">66M-42677-00</a> Graphic, front F15A	<a href="#">Buy now</a>
11	<a href="#">66N-42677-00</a> Graphic, Front F9.9C	<a href="#">Buy now</a>



# Top Cowling

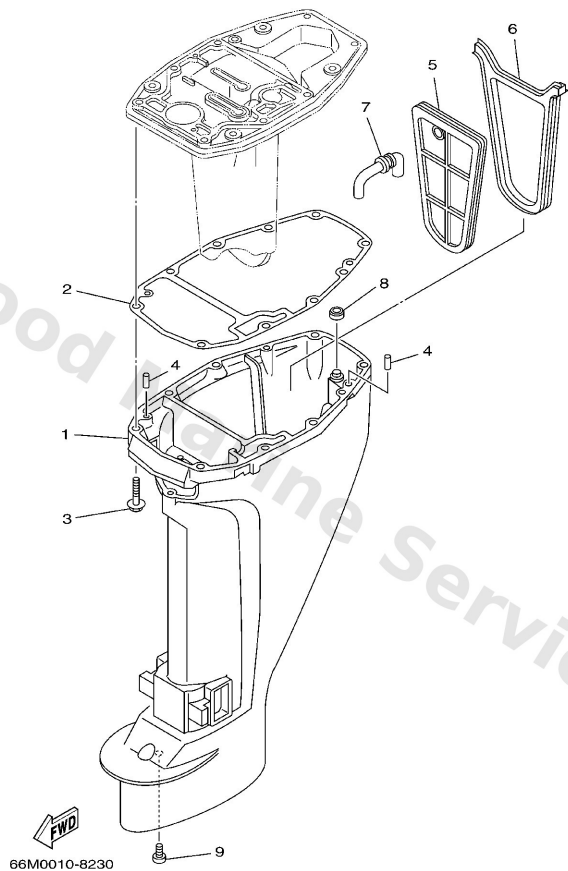


66M1010-2010

**A4**

Ref	Part	
11	<a href="#">69V-42677-00</a> Graphic Rear F13.5A	<a href="#">Buy now</a>
12	<a href="#">90202-05M38</a> Washer, plate(6l2)	<a href="#">Buy now</a>
13	<a href="#">67F-13434-02</a> Label, Caution	<a href="#">Buy now</a>

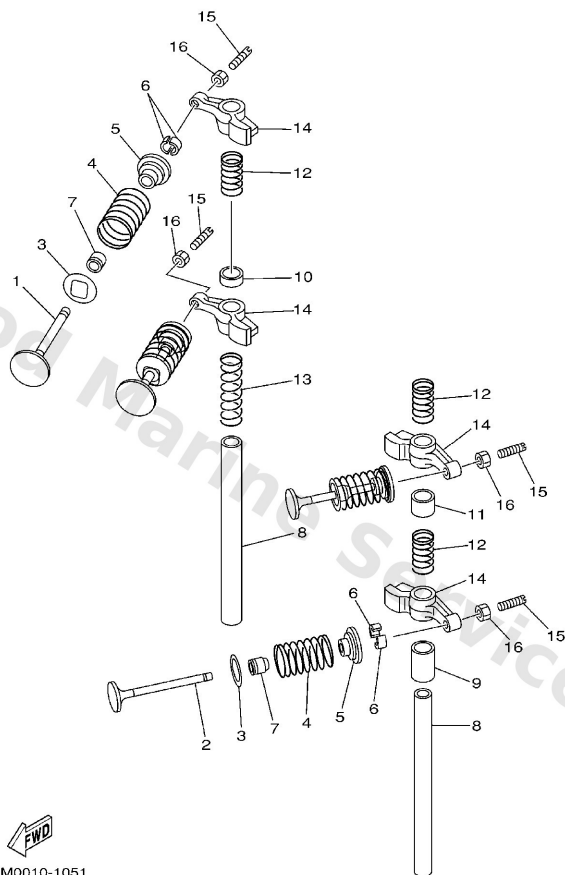
## Upper Casing



**E7**

Ref	Part	
1	<a href="#">66M-45111-00-4D</a> Casing, upper S	<a href="#">Buy now</a>
1	<a href="#">66M-45111-10-4D</a> Casing, upper L	<a href="#">Buy now</a>
2	<a href="#">66M-45113-00</a> Gasket, upper casing	<a href="#">Buy now</a>
3	<a href="#">97575-08545</a> Bolt, hexagon w/w deep recess	<a href="#">Buy now</a>
4	<a href="#">93606-12019</a> Pin, dowel (614)	<a href="#">Buy now</a>
5	<a href="#">66M-45126-00</a> Plate, Seal Damper	<a href="#">Buy now</a>
6	<a href="#">66M-45115-00</a> Gasket, upper casing	<a href="#">Buy now</a>
7	<a href="#">66M-45136-00</a> Pipe	<a href="#">Buy now</a>
8	<a href="#">66M-45128-00</a> Seal 2	<a href="#">Buy now</a>
9	<a href="#">90157-06M06</a> Screw, pan head(6m7)	<a href="#">Buy now</a>

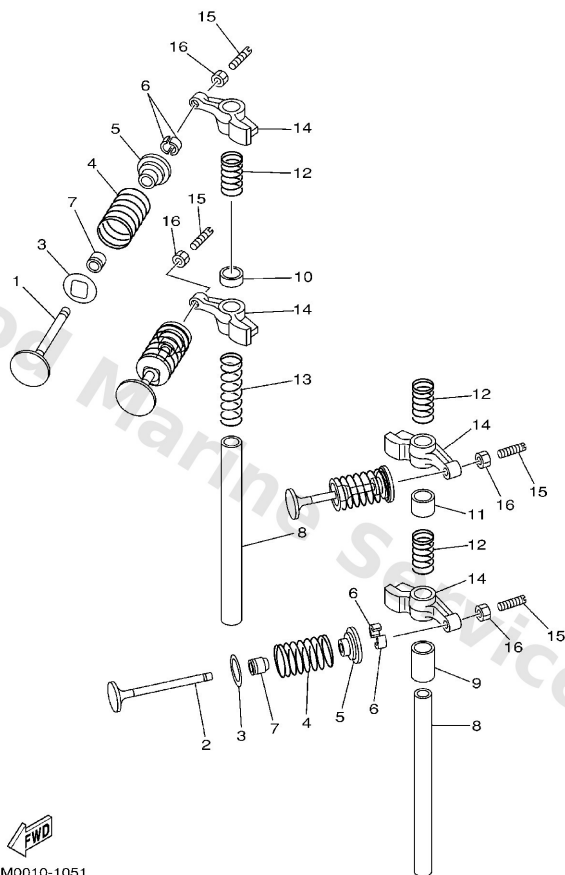
# Valve



**B2**

Ref	Part	
1	<a href="#">66M-12111-00</a> Valve, intake	<a href="#">Buy now</a>
2	<a href="#">66M-12121-00</a> Valve, exhaust	<a href="#">Buy now</a>
3	<a href="#">66M-12116-00</a> Seat, valve spring	<a href="#">Buy now</a>
4	<a href="#">66M-12113-00</a> Spring, valve inner	<a href="#">Buy now</a>
5	<a href="#">30X-12117-00</a> Retainer, valve spring	<a href="#">Buy now</a>
6	<a href="#">30X-12118-00</a> Cotter, valve	<a href="#">Buy now</a>
7	<a href="#">51Y-12119-00</a> Seal, valve stem	<a href="#">Buy now</a>
8	<a href="#">66M-12146-00</a> Shaft, rocker	<a href="#">Buy now</a>
9	<a href="#">90387-13M56</a> Collar (6g8)	<a href="#">Buy now</a>
10	<a href="#">90387-13001</a> Collar	<a href="#">Buy now</a>
11	<a href="#">90387-13002</a> Collar	<a href="#">Buy now</a>
12	<a href="#">90501-12M40</a> Spring, compression (6g8)	<a href="#">Buy now</a>
13	<a href="#">90501-12M41</a> Spring Compression (6G8)	<a href="#">Buy now</a>
14	<a href="#">66M-12151-10</a> Arm, Valve Rocker	<a href="#">Buy now</a>
15	<a href="#">62Y-12159-00</a> Screw Valve Adjusting	<a href="#">Buy now</a>

# Valve



Ref	Part	
16	<a href="#">62Y-12158-00</a> Nut, lock	<a href="#">Buy now</a>

# Disclaimer

This document is provided for convenience only. It is **not** an official Yamaha publication and is **not supplied, endorsed, or approved** by Yamaha Motor Co., Ltd.

Reasonable efforts are made to keep information accurate; however diagrams, part references, supersessions, descriptions, and applicability may contain errors or omissions. Specifications and part availability may change without notice.

You are responsible for confirming the correct parts for your engine (including model code, year, serial range, and any superseded part numbers) before ordering or fitting.