



Yamaha F2.5AMH 2003

Parts Manual

www.floodmarine.co.uk

+44 2882 246 539

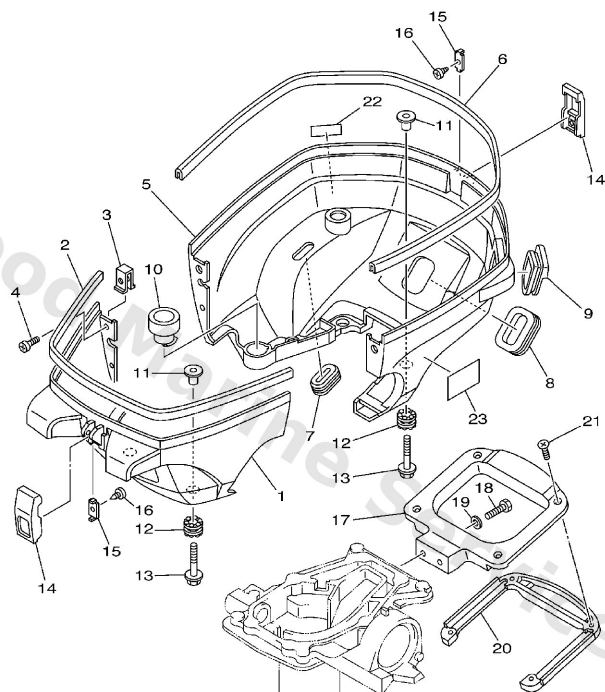
Authorised Yamaha Dealers



Contents

| | |
|------------------------------|----|
| BOTTOM COWLING | 3 |
| BRACKET | 5 |
| CARBURETOR | 8 |
| CONTROL | 10 |
| CRANKSHAFT. PISTON | 12 |
| CYLINDER. CRANKCASE 1 | 13 |
| CYLINDER. CRANKCASE 2 | 15 |
| FUEL | 17 |
| GENERATOR | 19 |
| INTAKE | 20 |
| LOWER CASING. DRIVE 1 | 21 |
| LOWER CASING. DRIVE 2 | 24 |
| REPAIR KIT 1 | 26 |
| REPAIR KIT 2 | 28 |
| REPAIR KIT 3 | 29 |
| STARTER | 31 |
| STEERING | 32 |
| TOP COWLING | 34 |
| UPPER CASING | 35 |
| VALVE | 36 |

Bottom Cowling

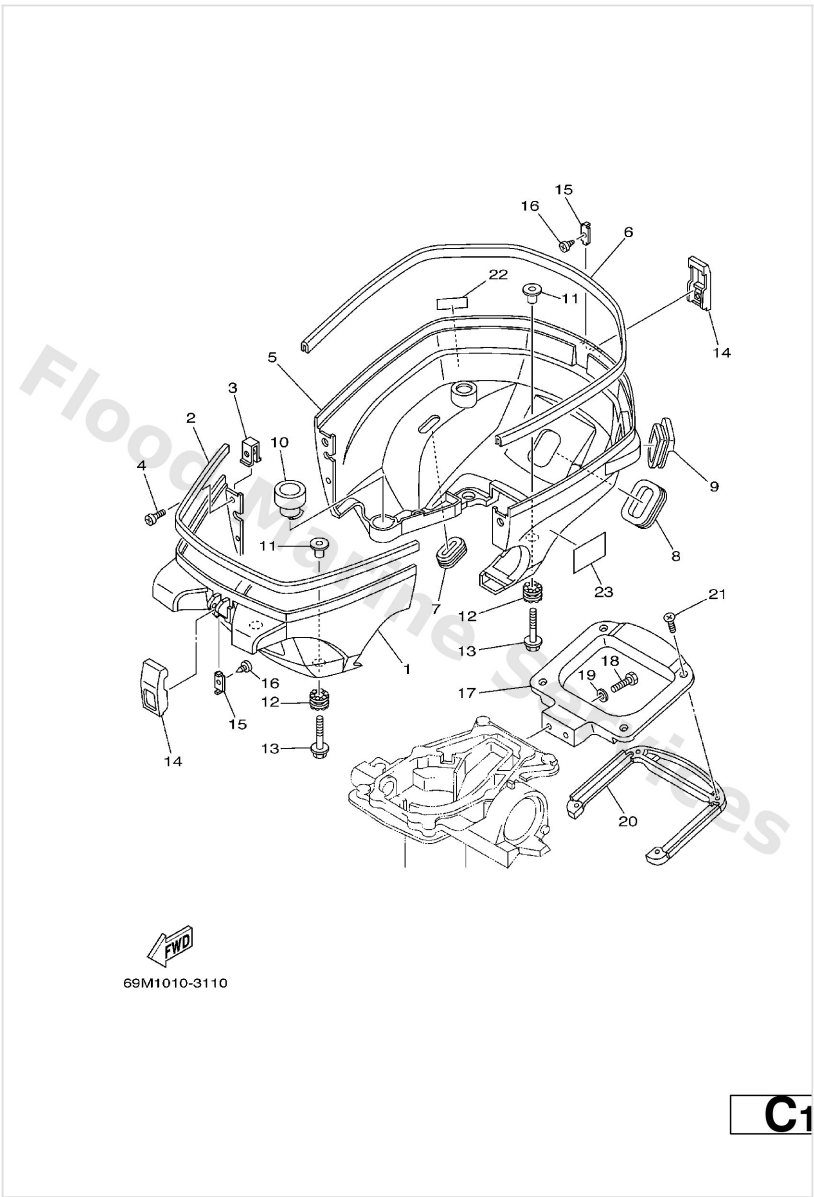


69M1010-3110

C1

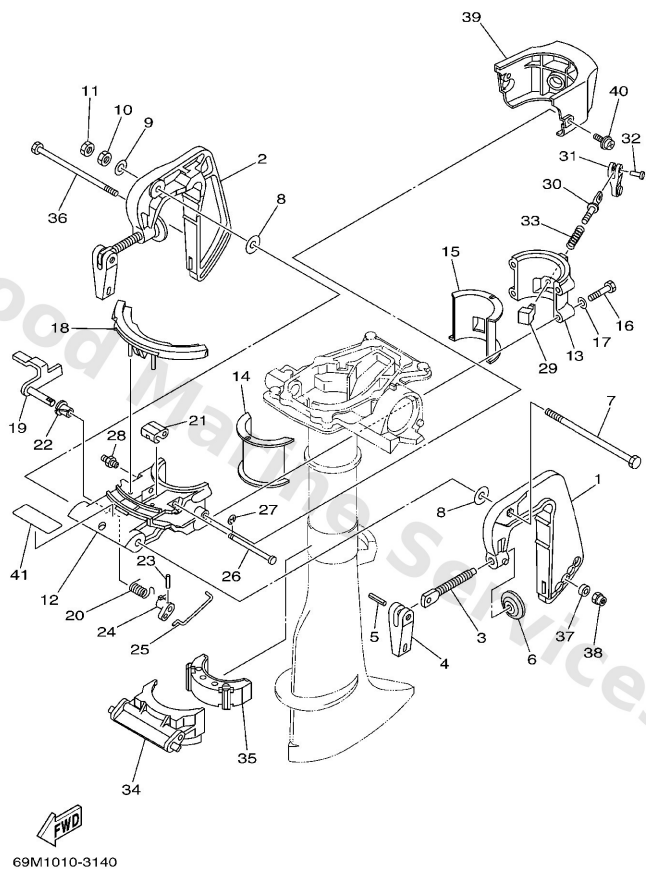
| Ref | Part | |
|-----|----------------------------------------------------|-------------------------|
| 2 | 69M-42628-00 Seal | Buy now |
| 3 | 6L5-42774-00 Stay, apron 1 | Buy now |
| 4 | 90157-05013 Screw, pan head | Buy now |
| 5 | 69M-G2712-00 Cowling, bottom 2 | Buy now |
| 6 | 69M-42629-00 Seal | Buy now |
| 7 | 69M-G2727-00 Grommet | Buy now |
| 8 | 69M-G2724-00 Grommet | Buy now |
| 9 | 69M-G2725-00 Grommet | Buy now |
| 10 | 69M-E5316-00 Damper 1 | Buy now |
| 11 | 69M-42758-00 Collar | Buy now |
| 12 | 69M-G2768-00 Damper | Buy now |
| 13 | 90119-06M17 Bolt, with washer | Buy now |
| 14 | 6L5-42647-00 Holder, clamp band | Buy now |
| 15 | 6L5-42823-00 Plate, stop | Buy now |
| 16 | 90167-03M02 Screw, tapping(6I5) | Buy now |

Bottom Cowling



| Ref | Part | |
|-----|----------------------------------------------------|-------------------------|
| 18 | 97095-06020 Bolt(7u8) | Buy now |
| 19 | 92995-06600 Washer, plain (646) | Buy now |
| 20 | 69M-G2735-00 Protector | Buy now |
| 21 | 90161-04003 Screw, tapping | Buy now |
| 22 | 69M-24591-00 Emblem, fuel cock | Buy now |
| 23 | 69M-13444-50 Mark | Buy now |

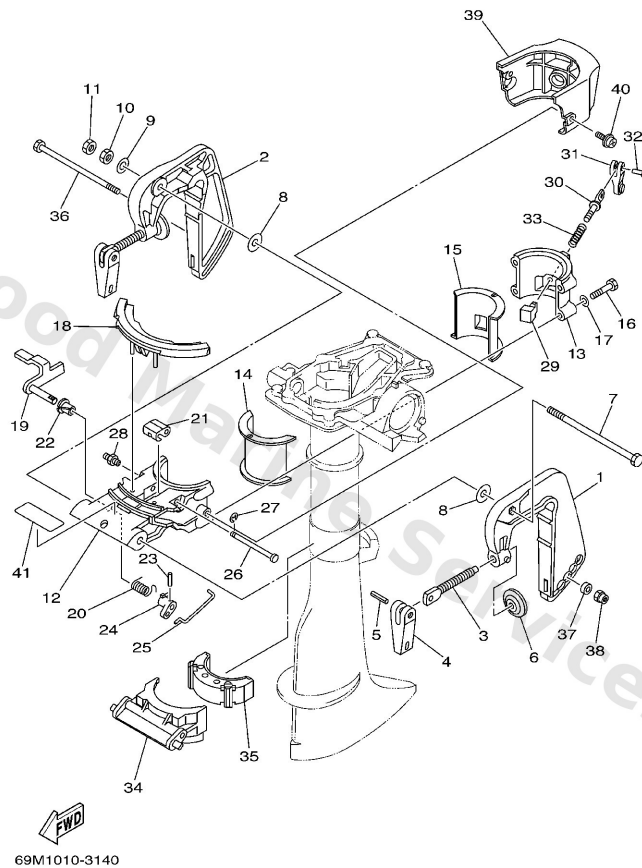
Bracket



C4

| Ref | Part | |
|-----|----------------------------------------------------------|-------------------------|
| 3 | 6E0-43116-01 Screw, transom clamp | Buy now |
| 4 | 69M-G3118-00 Handle transom clamp | Buy now |
| 5 | 90243-04M01 Pin(6a1) | Buy now |
| 6 | 620-43114-00 Pad, transom clamp | Buy now |
| 7 | 90101-08M07 Bolt(6e0) | Buy now |
| 8 | 90202-08022 Washer 6464313202 | Buy now |
| 9 | 92990-08200 Ybs66-8 washer, plain | Buy now |
| 10 | 95380-08600 Nut (661) | Buy now |
| 11 | 95380-08700 Nut(661) | Buy now |
| 14 | 69M-G2537-00 Bushing,pivot shaft 1 | Buy now |
| 15 | 69M-G2538-00 Bushing,pivot shaft 2 | Buy now |
| 16 | 97075-06030 Bolt(jf7) | Buy now |
| 17 | 92995-06600 Washer, plain (646) | Buy now |
| 18 | 69M-43679-00 Cover | Buy now |
| 19 | 69M-43180-00 Tilt stop lever assembly | Buy now |

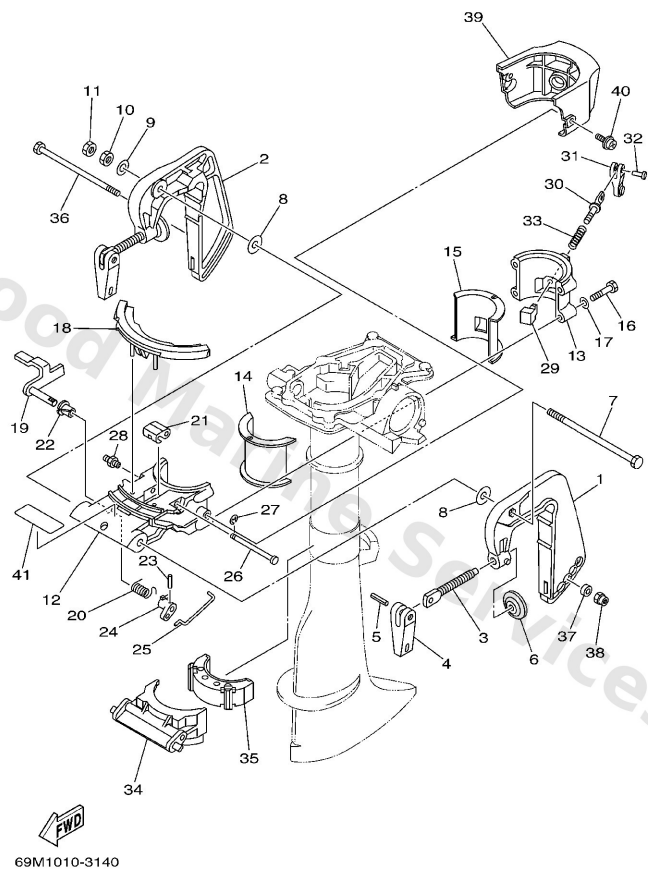
Bracket



C4

| Ref | Part | |
|-----|----------------------------------------------------|-------------------------|
| 20 | 69M-G3188-00 Spring | Buy now |
| 21 | 69M-G3186-00 Lever | Buy now |
| 22 | 90386-08032 Bushing (650) | Buy now |
| 23 | 91690-20010 Pin, spring | Buy now |
| 24 | 69M-G3185-00 Lever, tilt stop 2 | Buy now |
| 25 | 69M-G3164-00 Rod, tilt lock | Buy now |
| 26 | 69M-G3166-00 Pin | Buy now |
| 27 | 99080-04600 Circlip (eu0) | Buy now |
| 28 | 93700-06M03 Nipple, grease(6a1) | Buy now |
| 29 | 69M-42528-00 Plate, friction | Buy now |
| 30 | 69M-42529-00 Screw, friction pi | Buy now |
| 31 | 68D-G2561-01 Knob, steering loc | Buy now |
| 32 | 90266-04M05 Rivet(6I5) | Buy now |
| 33 | 90501-12803 Spring, compression | Buy now |
| 34 | 69M-G3351-00 Receiver,thrust | Buy now |

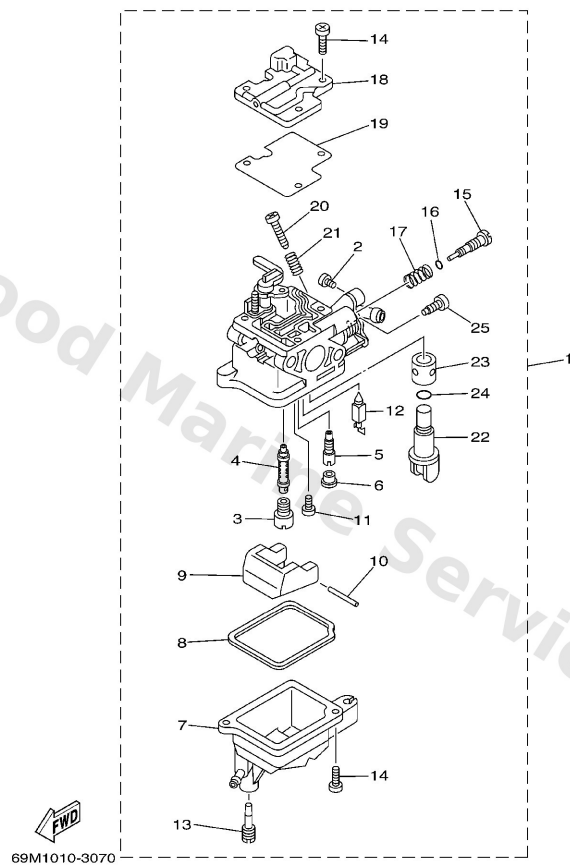
Bracket



C4

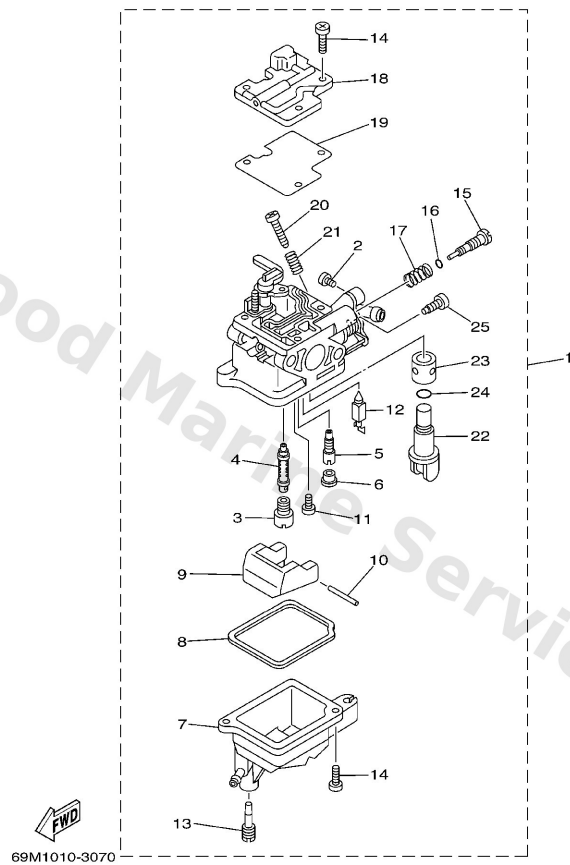
| Ref | Part | |
|-----|-----------------------------------------------------------|-------------------------|
| 35 | 69M-44557-00 Mount damper, lower front | Buy now |
| 36 | 90101-06030 Bolt | Buy now |
| 37 | 90201-06040 Washer 6464337400 | Buy now |
| 38 | 95780-06300 Nut, nylon (6g1) | Buy now |
| 39 | 69M-G3318-00 Cover | Buy now |
| 40 | 90159-06M11 Screw, with washer(6l2) | Buy now |
| 41 | 69M-G3691-00 Indicator, tilt | Buy now |

Carburetor



| Ref | Part | |
|-----|-------------------------------------------------------|-------------------------|
| 1 | 69M-14301-20 Carburetor assembly 1 | Buy now |
| 2 | 97890-04007 Screw, pan head (7h3) | Buy now |
| 3 | 69M-14343-31 Jet, main (#62) | Buy now |
| 4 | 69M-14341-00 Nozzle, main | Buy now |
| 5 | 69M-14342-68 Jet, pilot (#37) | Buy now |
| 6 | 69M-14966-00 Bush | Buy now |
| 7 | 69M-14381-00 Body, float chamber | Buy now |
| 8 | 69M-14984-00 Gasket, float chamber | Buy now |
| 9 | 69M-14385-00 Float | Buy now |
| 10 | 6A1-14386-00 Pin, float | Buy now |
| 11 | 98580-03005 Screw, pan head(78g) | Buy now |
| 12 | 62Y-14392-00 Valve, needle | Buy now |
| 13 | 69M-14991-00 Screw | Buy now |
| 14 | 98580-04010 Screw, pan head (e56) | Buy now |
| 15 | 69M-14323-20 Screw, air adjusting | Buy now |

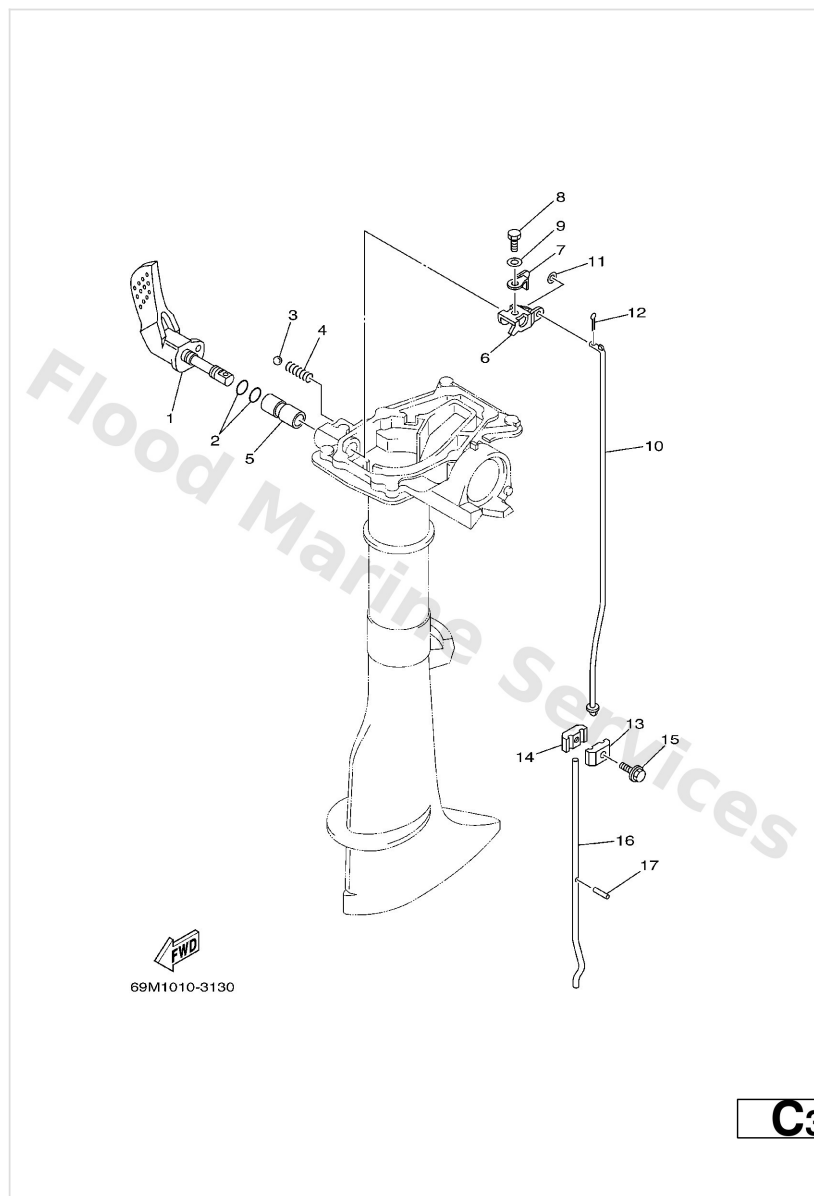
Carburetor



B4

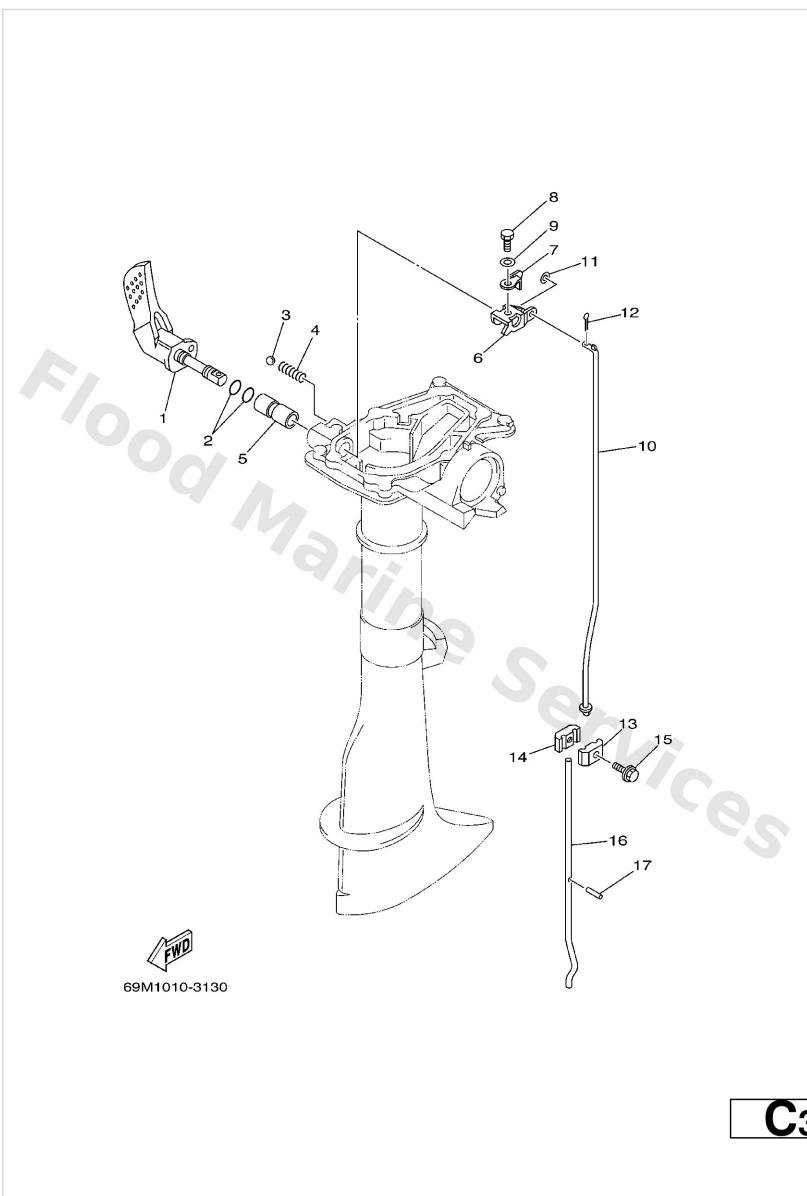
| Ref | Part | |
|-----|---------------------------------------------------------|-------------------------|
| 16 | 2T4-14397-00 O-ring | Buy now |
| 17 | 62Y-14334-00 Spring, air adjusting | Buy now |
| 18 | 69M-14527-00 Plate | Buy now |
| 19 | 69M-14536-00 Gasket | Buy now |
| 20 | 69W-14321-00 Screw, throttle | Buy now |
| 21 | 62Y-14212-00 Spring, pilot adjusting | Buy now |
| 22 | 69M-24524-00 Lever, cock | Buy now |
| 23 | 69M-24523-00 Valve | Buy now |
| 24 | 69M-24533-00 O-ring | Buy now |
| 25 | 69M-24535-00 Screw, lever fitting | Buy now |

Control



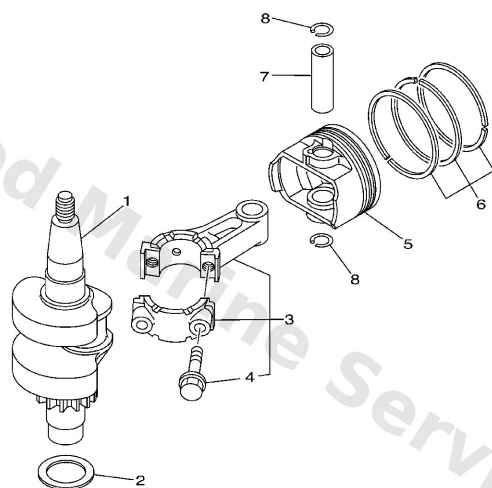
| Ref | Part | |
|-----|----------------------------------------------------------|-------------------------|
| 1 | 69M-G4111-00 Handle,gear shift | Buy now |
| 2 | 93210-09350 O-ring | Buy now |
| 3 | 93505-16024 Ball | Buy now |
| 4 | 90501-12802 Spring,compression | Buy now |
| 5 | 68D-G4122-01 Bushing, shift rod lever | Buy now |
| 6 | 69M-G4121-00 Lever, shift rod | Buy now |
| 7 | 69M-44126-00 Washer, shift rod | Buy now |
| 8 | 97095-05012 Bolt, hexagon | Buy now |
| 9 | 92995-05600 Washer, plain (646) | Buy now |
| 10 | 69M-44143-00 Rod, shift | Buy now |
| 11 | 92990-05600 Washer, plain (646) | Buy now |
| 12 | 91490-16010 Pin, cotter | Buy now |
| 13 | 6N0-G4145-10 Connector 1 | Buy now |
| 14 | 6N0-G4146-10 Connector 2 | Buy now |
| 15 | 90119-06ME0 Bolt, with washer | Buy now |

Control



| Ref | Part | |
|-----|-------------------------------------------------|-------------------------|
| 16 | 6L5-44144-00 Rod, shift S | Buy now |
| 16 | 6L5-44144-10 Rod, shift L | Buy now |
| 17 | 91609-25014 Pin, Spring | Buy now |

Crankshaft. Piston

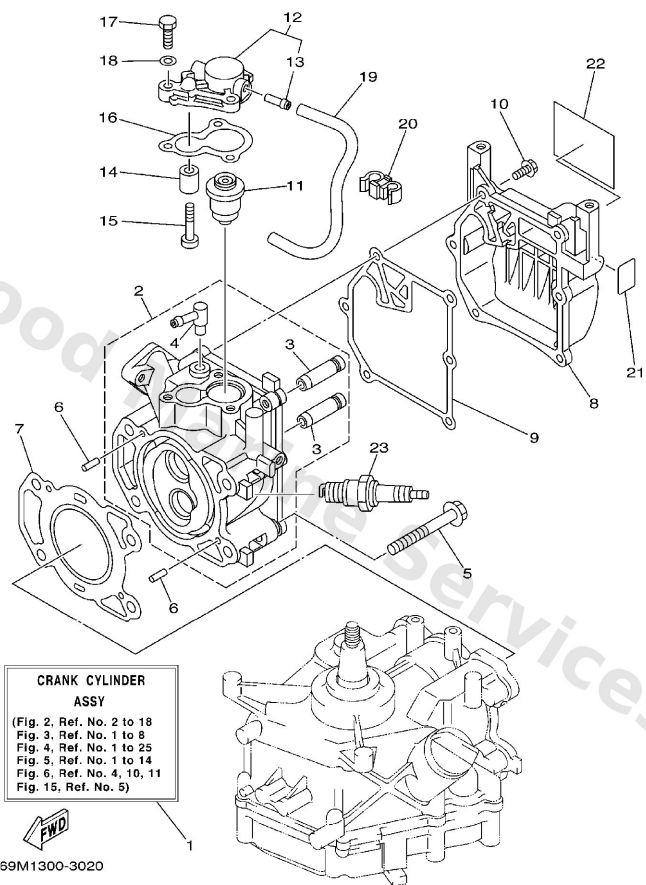



69M1010-3030

A6

| Ref | Part | |
|-----|---------------------------------------------------------|-------------------------|
| 1 | 69M-11400-00 Crankshaft assembly | Buy now |
| 2 | 90201-23008 Washer, plate | Buy now |
| 3 | 69M-11650-00 Connecting rod assembly | Buy now |
| 4 | 7FK-11654-00 Bolt, connecting rod | Buy now |
| 5 | 69M-E1631-00-96 Piston (std) f2.5 | Buy now |
| 6 | 69M-E1603-00 Piston ring set (std) | Buy now |
| 7 | 69M-E1633-00 Pin, piston | Buy now |
| 8 | 93450-13130 Circlip(3nw) | Buy now |

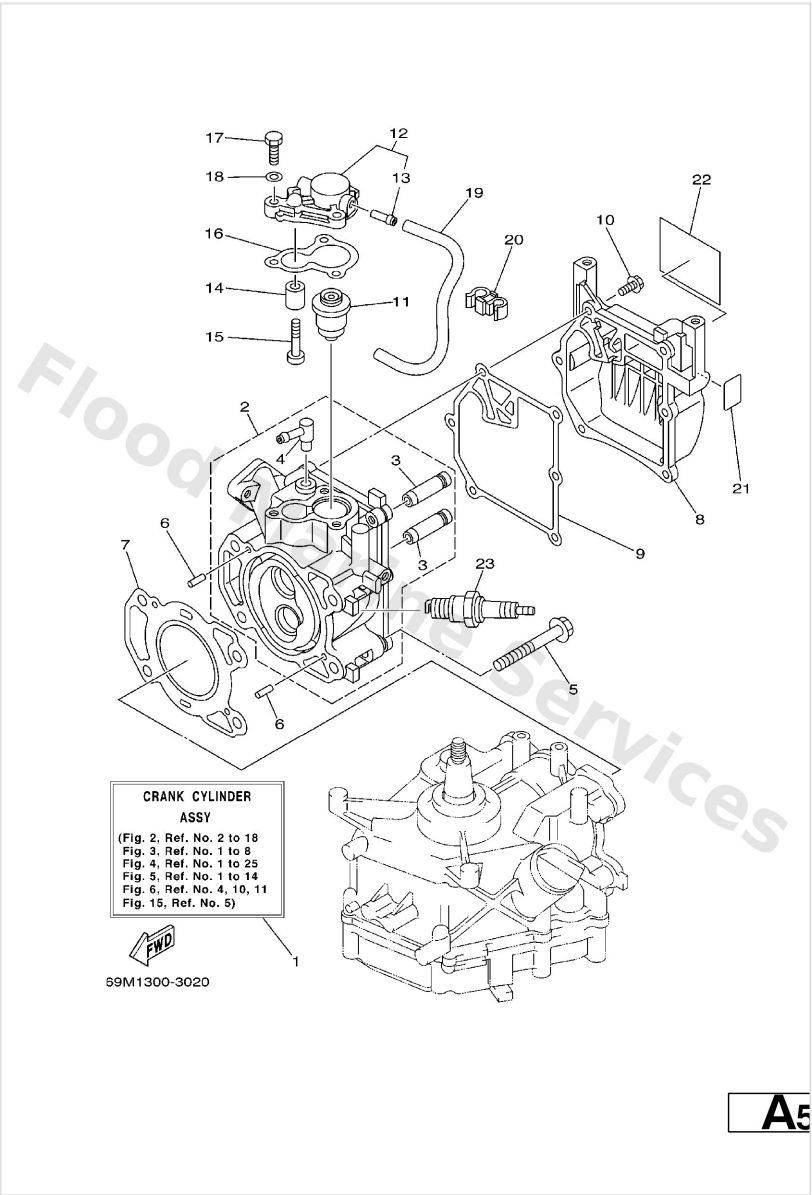
Cylinder. Crankcase 1



A5

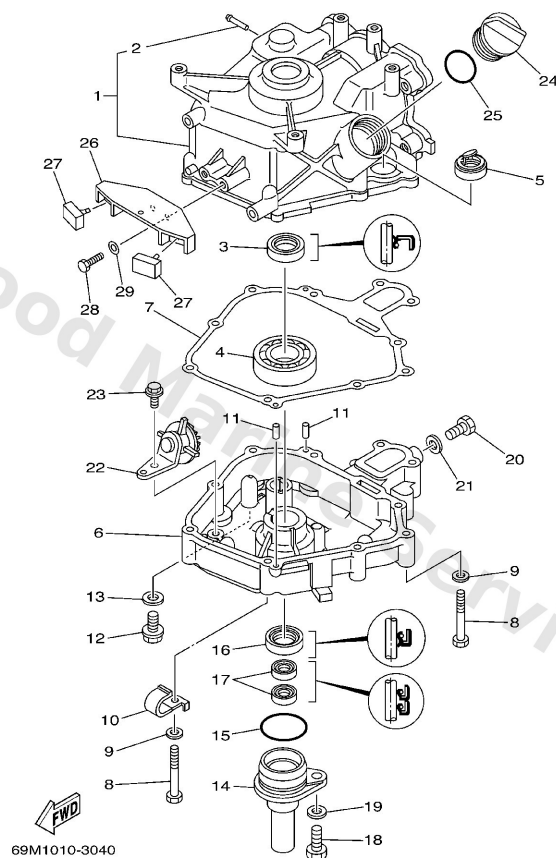
| Ref | Part | |
|-----|---------------------------------------------------------|-------------------------|
| 3 | 67D-11133-10 Guide, valve 1 | Buy now |
| 4 | 676-11372-00 Nipple, hose | Buy now |
| 5 | 90105-08M36 Bolt (6g8) | Buy now |
| 6 | 93604-12M07 Pin, dowel (688) | Buy now |
| 7 | 69M-11181-00 Gasket, cylinder head 1 | Buy now |
| 9 | 69M-11193-A0 Gasket, head cover 1 | Buy now |
| 10 | 90105-06M14 Bolt (6e0) | Buy now |
| 11 | 69M-12411-00 Thermostat | Buy now |
| 13 | 650-24378-00 Pipe, joint 2 | Buy now |
| 14 | 68D-E1325-00 Anode | Buy now |
| 15 | 97880-05025 Screw, panhead (a93) | Buy now |
| 16 | 68D-E2414-A0 Gasket, cover | Buy now |
| 17 | 97095-06020 Bolt(7u8) | Buy now |
| 18 | 92995-06600 Washer, plain (646) | Buy now |
| 19 | 90445-09808 Hose | Buy now |

Cylinder. Crankcase 1



| Ref | Part | |
|-----|----------------------------------------------------|-------------------------|
| 20 | 90464-09013 Clamp | Buy now |
| 21 | 67D-42791-10 Mark 1 | Buy now |
| 22 | 68D-E2138-60 12 - | Buy now |
| 23 | 94702-00248 Plug, spark (br6hs) | Buy now |

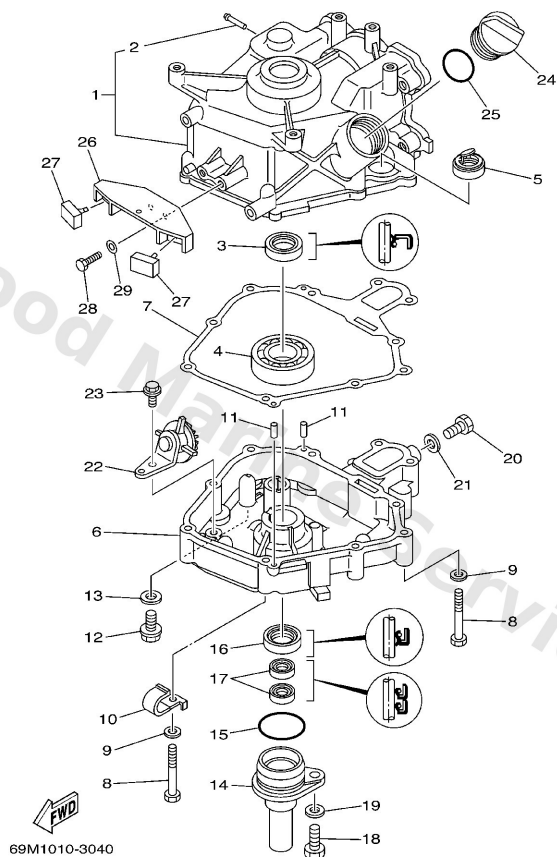
Cylinder. Crankcase 2



A7

| Ref | Part | |
|-----|----------------------------------------------------|-------------------------|
| 2 | 6H1-14485-00 Pipe, joint | Buy now |
| 3 | 93102-20108 Oil seal | Buy now |
| 4 | 93306-272Y2 Bearing | Buy now |
| 5 | 69M-15361-00 Gauge, level | Buy now |
| 7 | 69M-11351-A0 Gasket, cylinder | Buy now |
| 8 | 97013-06045 Bolt, hexagon | Buy now |
| 9 | 92903-06600 Washer, plain (646) | Buy now |
| 10 | 90465-08M99 Clamp | Buy now |
| 11 | 93604-12M07 Pin, dowel (688) | Buy now |
| 12 | 90105-08M76 Bolt, washer based | Buy now |
| 13 | 90201-08818 Washer | Buy now |
| 15 | 93210-35537 O-ring | Buy now |
| 17 | 93102-09004 Oil seal | Buy now |
| 18 | 97095-08020 Bolt, hexagon | Buy now |
| 19 | 92995-08600 Washer, plain (663) | Buy now |

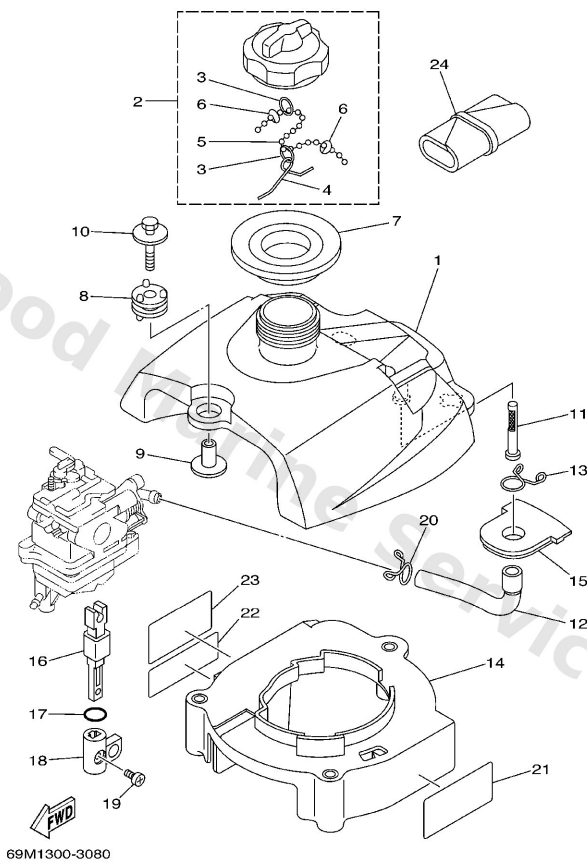
Cylinder. Crankcase 2



A7

| Ref | Part | |
|-----|----------------------------------------------------------|-------------------------|
| 20 | 97095-08014 Bolt, hexagon deep recess | Buy now |
| 21 | 90430-08800 Gasket (256-11198-00) | Buy now |
| 22 | 69M-E3102-00 Gear unit assembly | Buy now |
| 23 | 95817-06012 Bolt, flange | Buy now |
| 24 | 69M-E5363-00 Plug, oil | Buy now |
| 25 | 93210-24M79 O-ring | Buy now |
| 26 | 69M-G2743-00 Bracket,1 | Buy now |
| 27 | 6G8-44532-00 Stopper | Buy now |
| 28 | 97095-06020 Bolt(7u8) | Buy now |
| 29 | 92995-06600 Washer, plain (646) | Buy now |

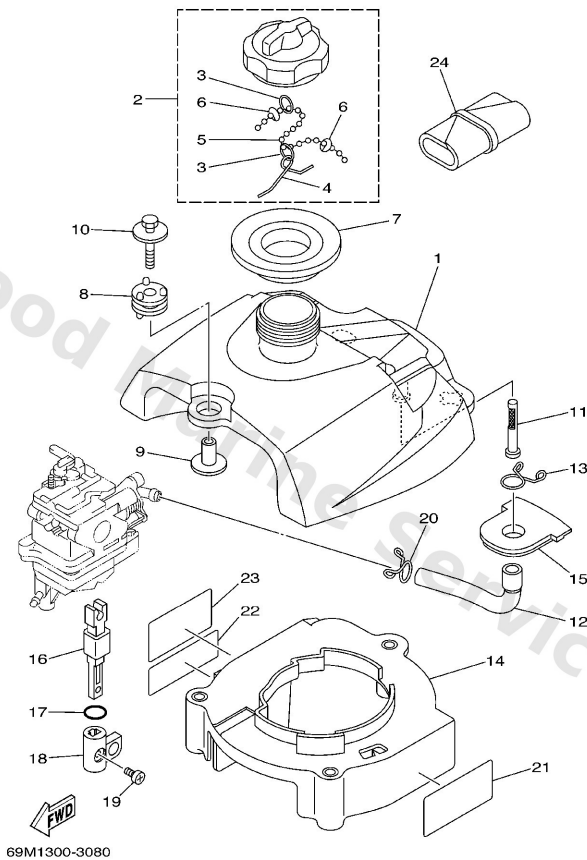
Fuel



B5

| Ref | Part | |
|-----|----------------------------------------------------------|-------------------------|
| 1 | 69M-F4111-00 8- | Buy now |
| 2 | 67D-24610-02 Cap assembly | Buy now |
| 3 | 90501-10260 Spring, safety 6152463500 | Buy now |
| 4 | 624-24634-00 Hook, chain ball | Buy now |
| 5 | 69M-24633-00 Chain, ball | Buy now |
| 6 | 6H1-21757-00 Washer, special 1 | Buy now |
| 7 | 69M-24641-00 Gasket, cap 1 | Buy now |
| 8 | 69M-F4375-00 Grommet | Buy now |
| 9 | 68F-86129-00 Collar | Buy now |
| 10 | 68F-85119-00 Bolt | Buy now |
| 11 | 6L5-24251-00 Strainer 1 | Buy now |
| 12 | 69M-F4311-00 Pipe Fuel 1 | Buy now |
| 13 | 90467-13M13 Clip(6m6) | Buy now |
| 14 | 69M-F4191-00 Bracket, fuel tank | Buy now |
| 15 | 69M-F4181-00 Damper, locating 1 | Buy now |

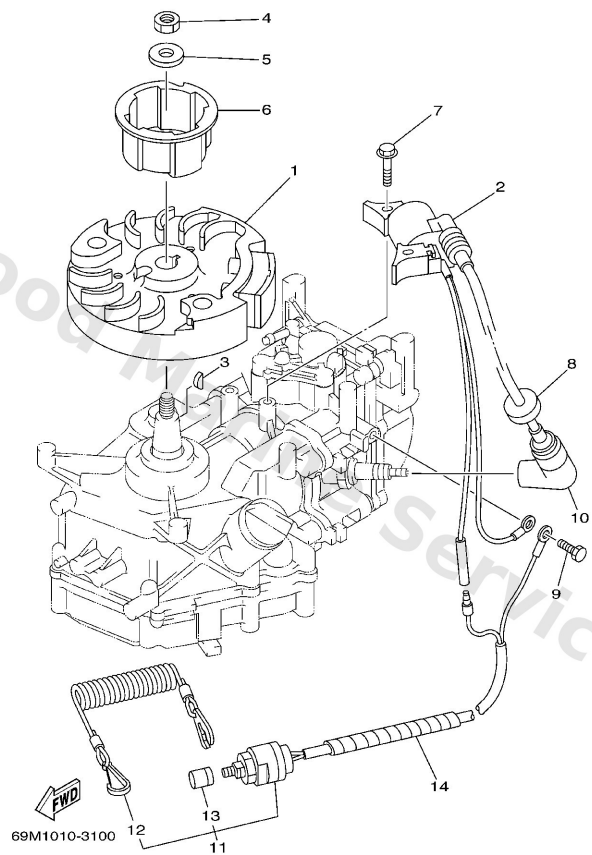
Fuel



B5

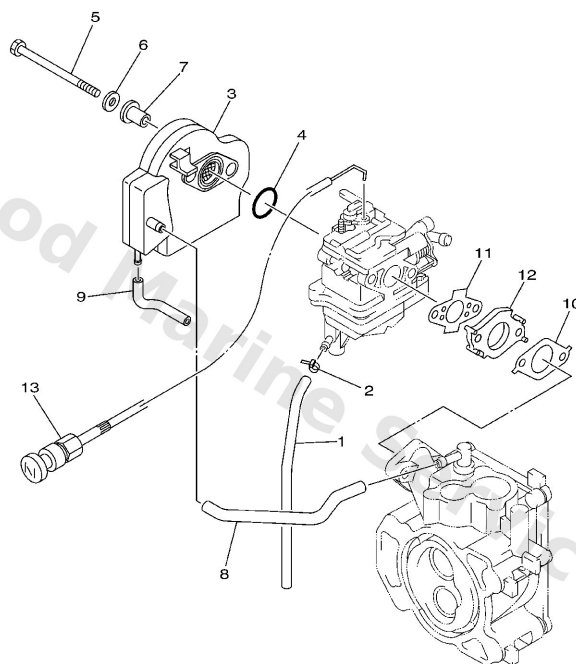
| Ref | Part | |
|-----|--------------------------------------------------------|-------------------------|
| 16 | 69M-24554-00 Shaft, cock | Buy now |
| 17 | 93210-13M43 O-ring (26h) | Buy now |
| 18 | 69M-24575-00 Lever, fuel change | Buy now |
| 19 | 90159-05M12 Screw, with washer(6t4) | Buy now |
| 20 | 90467-11M08 Clip(72x) | Buy now |
| 21 | 69M-13437-60 Mark, Caution | Buy now |
| 22 | 6A1-83625-41 Mark 5 | Buy now |
| 23 | 6A1-83625-51 Mark 5 | Buy now |
| 24 | 69M-F8100-00 Tool kit | Buy now |

Generator



| Ref | Part | |
|-----|-------------------------------------------------------------|-------------------------|
| 1 | 69M-85650-00 Rotor assembly | Buy now |
| 2 | 69M-85640-00 T.c.i. unit assembly | Buy now |
| 3 | 90280-04M06 Key, woodruff(6a1) | Buy now |
| 4 | 90170-10M33 Nut(6a1) | Buy now |
| 5 | 90201-105A2 Washer, plate (4x7) | Buy now |
| 6 | 69M-15723-00 Pulley, starter | Buy now |
| 7 | 90105-06M24 Bolt (6g1) | Buy now |
| 8 | 90480-25161 Grommet(656) | Buy now |
| 9 | 97095-06012 Bolt(gh1) | Buy now |
| 10 | 6E3-82370-21 Plug cap assembly | Buy now |
| 11 | 65W-82575-01 Engine stop switch assembly | Buy now |
| 12 | 682-82556-00 Lanyard, stop switch | Buy now |
| 13 | 689-8257Y-00 Cap | Buy now |
| 14 | 90446-06M90 Hose | Buy now |

Intake

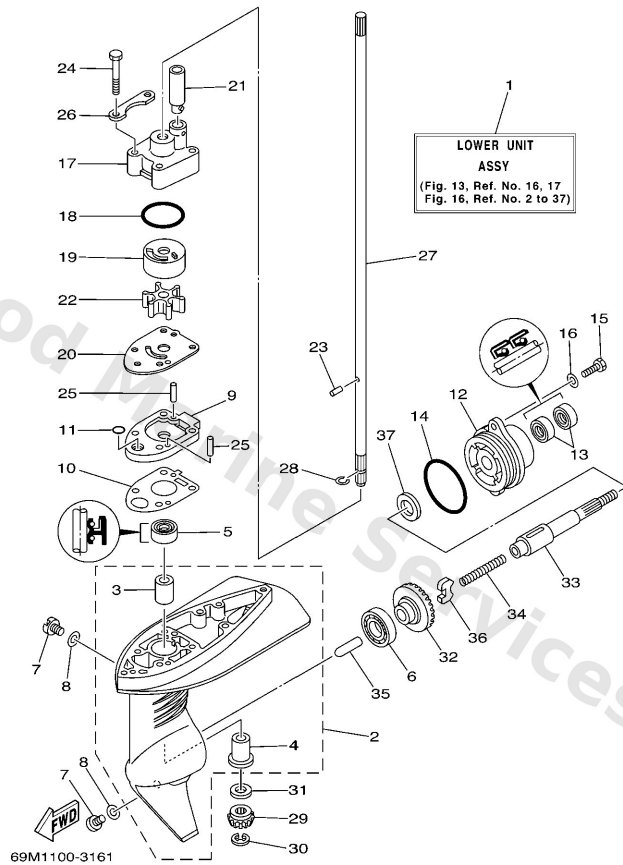


69M1010-3060

B3

| Ref | Part | |
|-----|--------------------------------------------------------------|-------------------------|
| 1 | 69M-E4148-00 6- | Buy now |
| 2 | 90465-11M10 Clamp | Buy now |
| 3 | 69M-14440-00 Silencer assembly, intake | Buy now |
| 4 | 93210-20M65 O-ring | Buy now |
| 5 | 97095-06075 Bolt, hexagon w/w deep recess | Buy now |
| 6 | 92995-06600 Washer, plain (646) | Buy now |
| 7 | 90387-063Y3 Collar | Buy now |
| 8 | 69M-E2483-00 Pipe 3 | Buy now |
| 9 | 90445-07805 Hose (I200) | Buy now |
| 10 | 69M-E3645-A0 Gasket, manifold 1 | Buy now |
| 11 | 69M-E3646-A0 Gasket, manifold 2 | Buy now |
| 12 | 69M-E3647-00 Gasket, manifold 3 | Buy now |
| 13 | 69M-F6330-00 Cable de starter | Buy now |

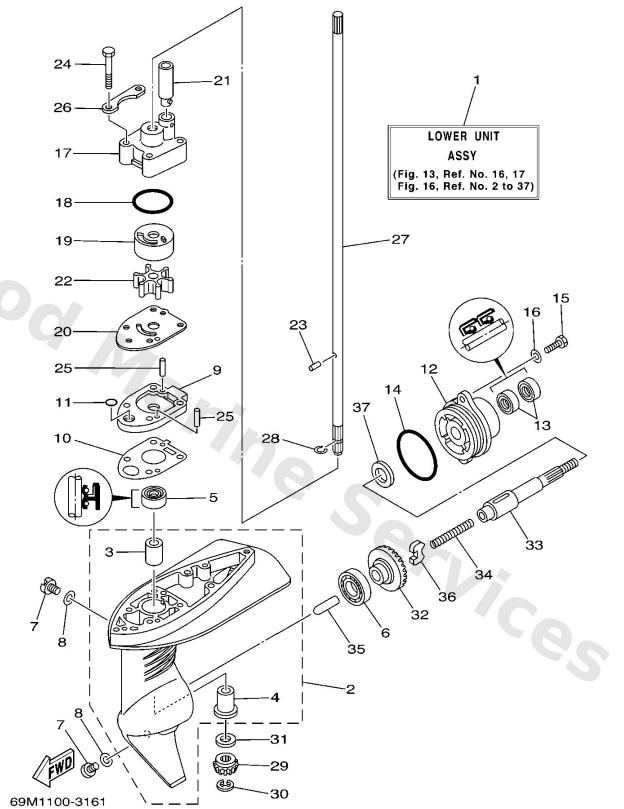
Lower Casing. Drive 1



C7

| Ref | Part | |
|-----|----------------------------------------------------------------|-------------------------|
| 3 | 6L5-45316-09 Bushing, d/shaft 1 90380-09m23 | Buy now |
| 4 | 6L5-45317-09 Bushing, d/shaft 2 90381-09m08 | Buy now |
| 5 | 93103-09M41 Oil seal | Buy now |
| 6 | 93316-003Y0 Bearing | Buy now |
| 7 | 90340-08002 Plug, straight screw | Buy now |
| 8 | 90430-08801 Gasket | Buy now |
| 10 | 69M-G5315-A0 Packing, lower casing | Buy now |
| 11 | 93210-05001 O-ring | Buy now |
| 13 | 93101-13M12 Oil seal | Buy now |
| 14 | 93210-48214 O-ring | Buy now |
| 15 | 97095-06016 Bolt, hexagon deep recess | Buy now |
| 16 | 92995-06600 Washer, plain (646) | Buy now |
| 17 | 69M-G4311-00 Housing, water pump | Buy now |
| 18 | 93210-33M85 O-ring(615) | Buy now |
| 19 | 6L5-44322-00 Insert, cartridge | Buy now |

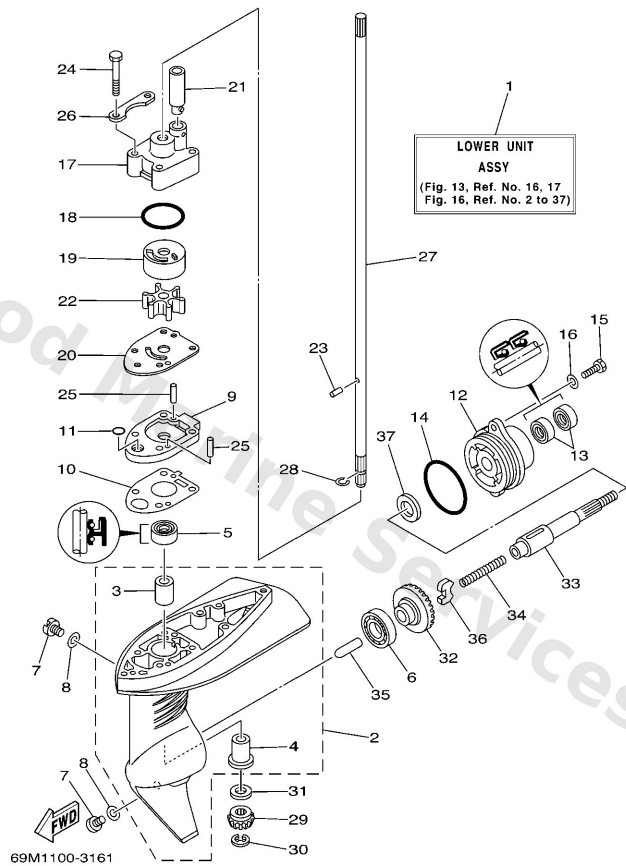
Lower Casing. Drive 1



C7

| Ref | Part | |
|-----|---------------------------------------------------------|-------------------------|
| 20 | 69M-G4323-00 Outer plate,cartridge | Buy now |
| 21 | 6E0-44366-00 Damper, water seal 2 | Buy now |
| 22 | 6L5-44352-00 Impeller | Buy now |
| 23 | 93604-07M13 Pin, dowel(615) | Buy now |
| 24 | 97095-06040 Bolt (682) | Buy now |
| 25 | 93604-18080 Pin. dowel. (647) | Buy now |
| 26 | 69M-G4328-00 Plate | Buy now |
| 27 | 69M-G5511-00 Shaft, drive S | Buy now |
| 27 | 69M-G5511-10 Shaft, drive L | Buy now |
| 28 | 93440-08819 Circlip | Buy now |
| 29 | 6L5-45551-00 Pinion | Buy now |
| 30 | 99001-06600 Circlip(53l) | Buy now |
| 31 | 6L5-45533-00-20 Shim (T)2.0Mm) UR | Buy now |
| 31 | 6L5-45533-00-21 Shim (t:2.1mm) UR | Buy now |
| 31 | 6L5-45533-00-22 Shim (t:2.2mm) UR | Buy now |

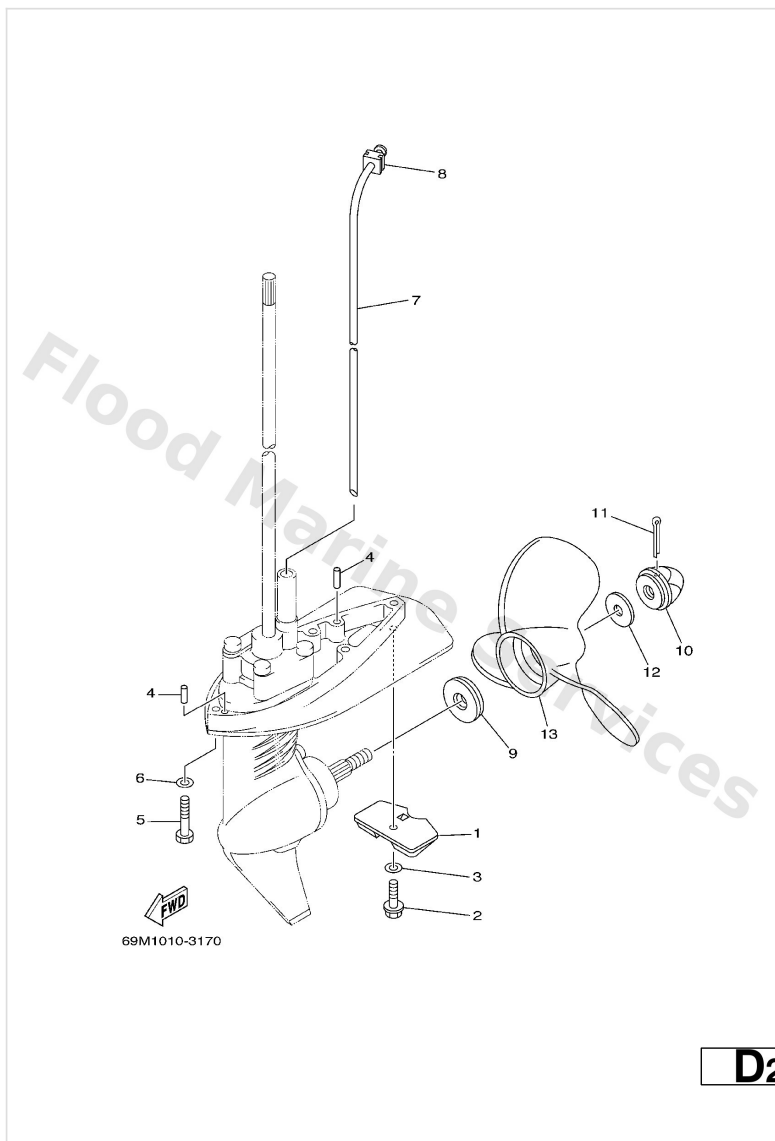
Lower Casing. Drive 1



C7

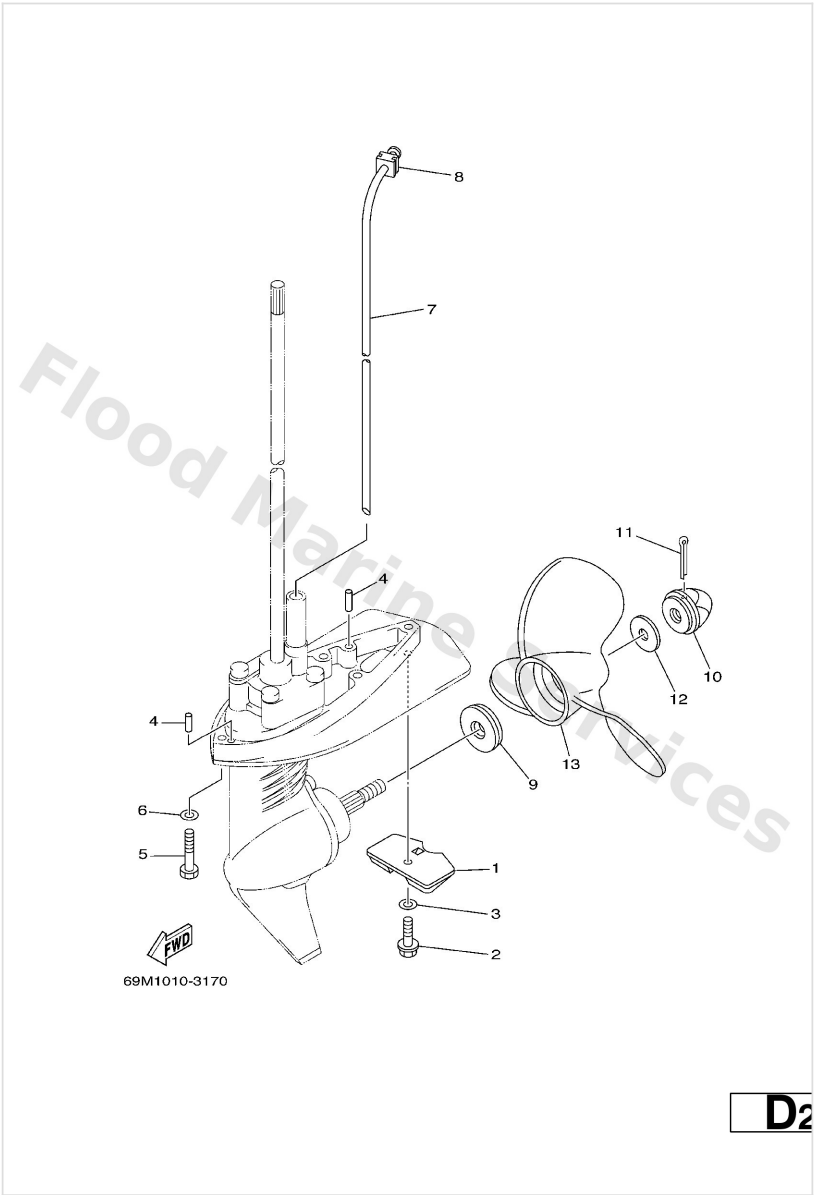
| Ref | Part | |
|-----|---------------------------------------------------------------|-------------------------|
| 31 | 6L5-45533-00-23 Shim (t:2.3mm) UR | Buy now |
| 32 | 6L5-45560-00 Gear | Buy now |
| 33 | 6L5-45611-00 Shaft, propeller | Buy now |
| 34 | 90501-10064 Spring, compression 6164563600 | Buy now |
| 35 | 69M-G5635-00 Plunger, shift | Buy now |
| 36 | 6L5-45631-00 Clutch, dog | Buy now |
| 37 | 90201-13198 Washer 6474556600 | Buy now |

Lower Casing. Drive 2



| Ref | Part | |
|-----|-------------------------------------------------------------------------|-------------------------|
| 1 | 68D-G5251-00 Anode | Buy now |
| 2 | 95895-06020 Bolt, flange(jk3) | Buy now |
| 3 | 92990-06300 Washer, tooth | Buy now |
| 4 | 93604-12M07 Pin, dowel (688) | Buy now |
| 5 | 97095-06030 Bolt(jf7) S | Buy now |
| 6 | 92995-06600 Washer, plain (646) S | Buy now |
| 7 | 69M-44361-00 Tube, water 1 S | Buy now |
| 7 | 69M-44361-10 Tube, water 1 L | Buy now |
| 8 | 68D-G4365-00 Damper, water seal | Buy now |
| 9 | 68D-G5987-00 Spacer 1 | Buy now |
| 10 | 6L5-45616-00 Nut, propeller | Buy now |
| 11 | 91490-25030 Pin, cotter(6I5) | Buy now |
| 12 | 90201-08M54 Washer, plate (6e5) | Buy now |
| 13 | 6L5-45943-00-EL Propeller (3x7-1/4 x6 -bs) UR | Buy now |
| 13 | 6L5-45945-00-EL Propeller (3x7-1/4"x7-1/4"-bs) UR | Buy now |

Lower Casing. Drive 2

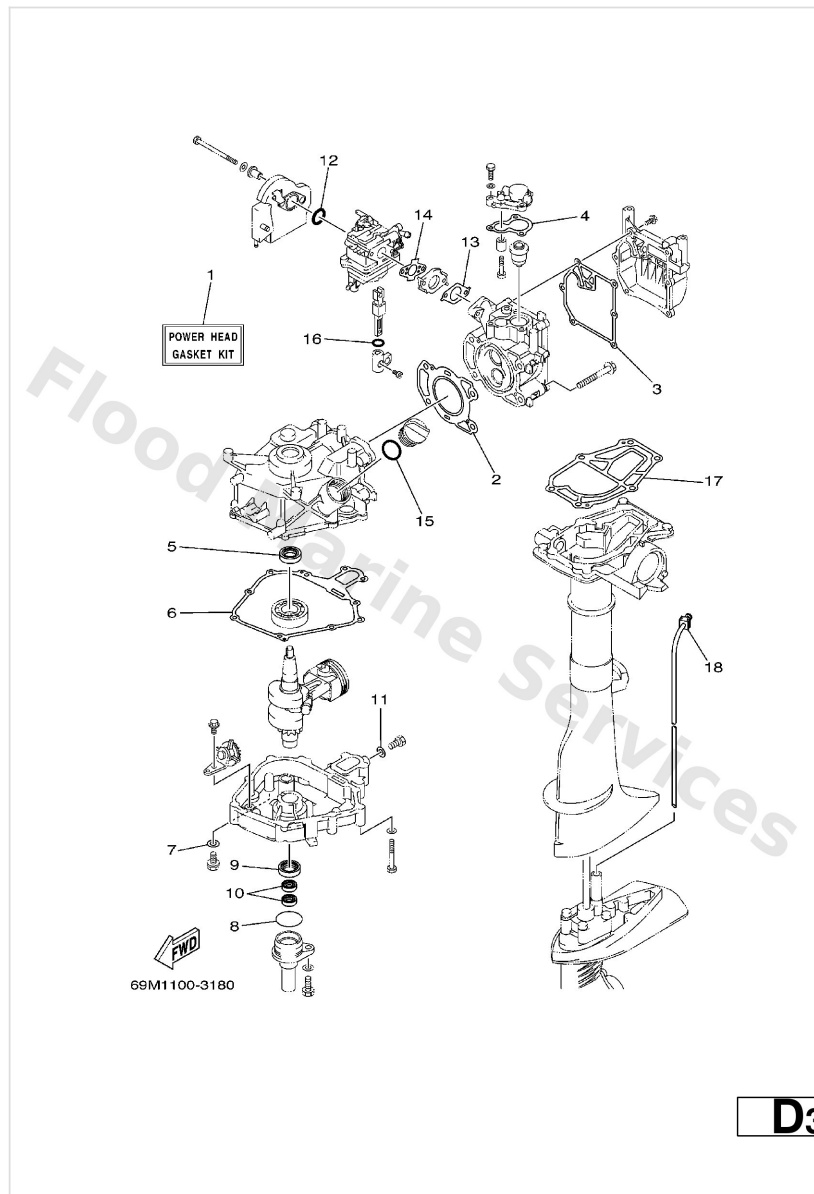


69M1010-3170

| Ref | Part | |
|-----|-------------------------------------------------------------------------|-------------------------|
| 13 | 6L5-45947-00-EL Propeller (3x7-1/4"x8-1/4"-bs) UR | Buy now |
| 13 | 6L5-45949-00-EL Propeller (3x7-1/4 x5 -bs) UR | Buy now |
| 13 | 6L5-45952-00-EL Propeller (3x7-1/4"x5-1/2"-bs) UR | Buy now |

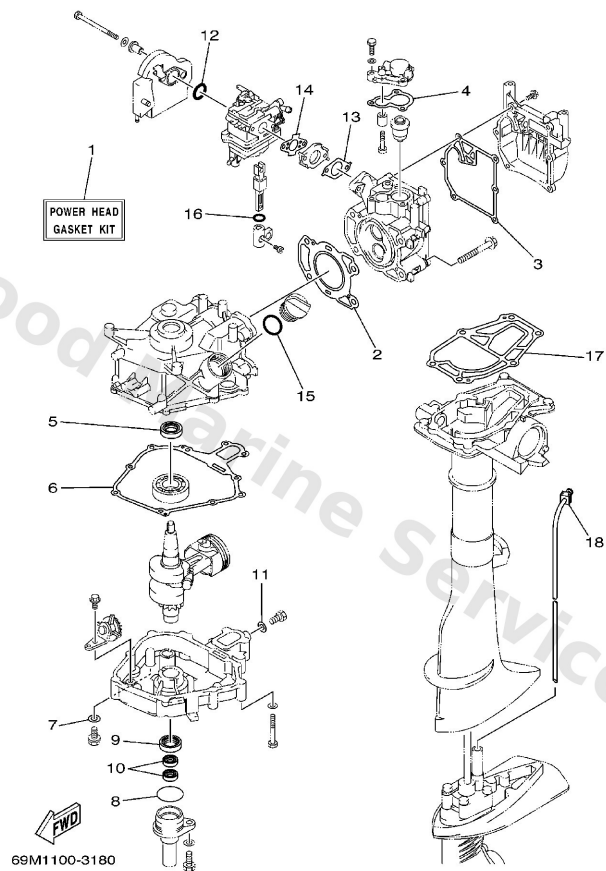
D2

Repair Kit 1



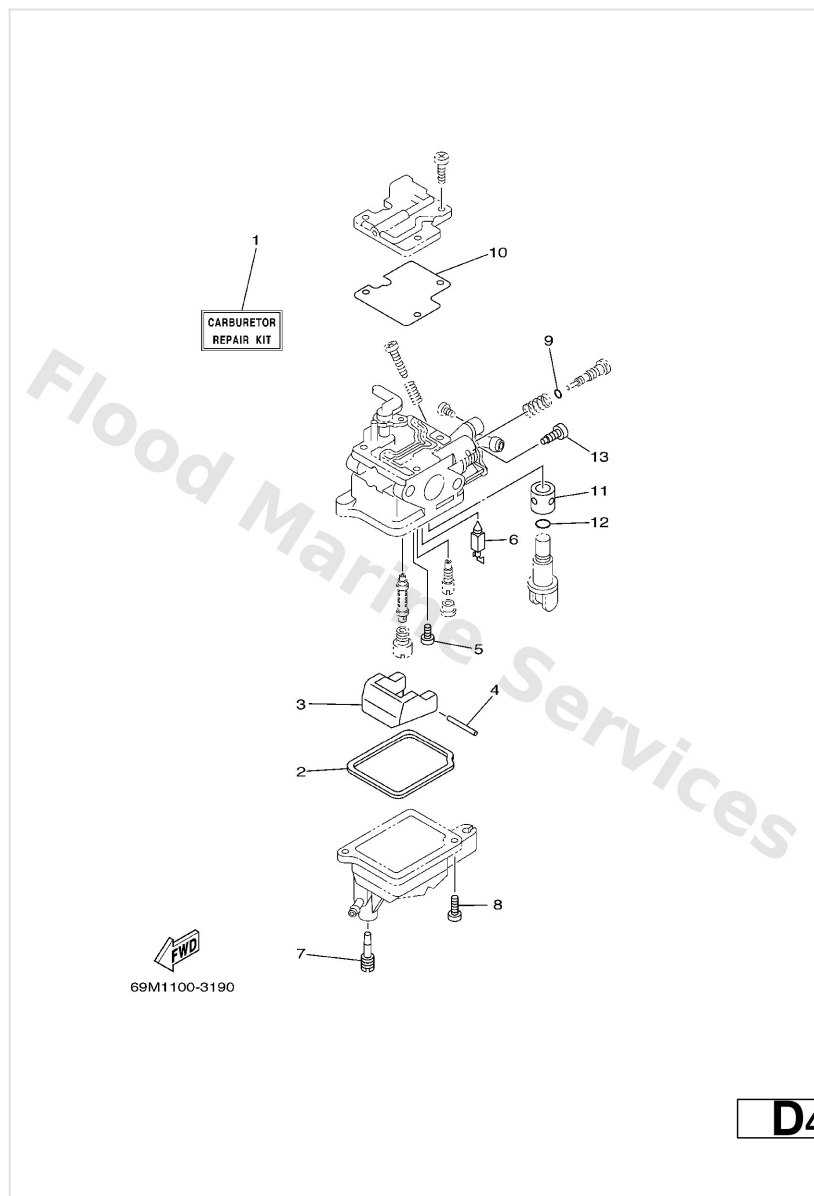
| Ref | Part | |
|-----|---------------------------------------------------------|-------------------------|
| 1 | 69M-WE001-00 Power head gasket kit | Buy now |
| 2 | 69M-11181-00 Gasket, cylinder head 1 | Buy now |
| 3 | 69M-11193-A0 Gasket, head cover 1 | Buy now |
| 4 | 68D-E2414-A0 Gasket, cover | Buy now |
| 5 | 93102-20108 Oil seal | Buy now |
| 6 | 69M-11351-A0 Gasket, cylinder | Buy now |
| 7 | 90201-08818 Washer | Buy now |
| 8 | 93210-35537 O-ring | Buy now |
| 10 | 93102-09004 Oil seal | Buy now |
| 11 | 93430-08800 Circlip | Buy now |
| 12 | 93210-20M65 O-ring | Buy now |
| 13 | 69M-E3645-A0 Gasket, manifold 1 | Buy now |
| 14 | 69M-E3646-A0 Gasket, manifold 2 | Buy now |
| 15 | 93210-24M79 O-ring | Buy now |
| 16 | 93210-13M43 O-ring (26h) | Buy now |

Repair Kit 1



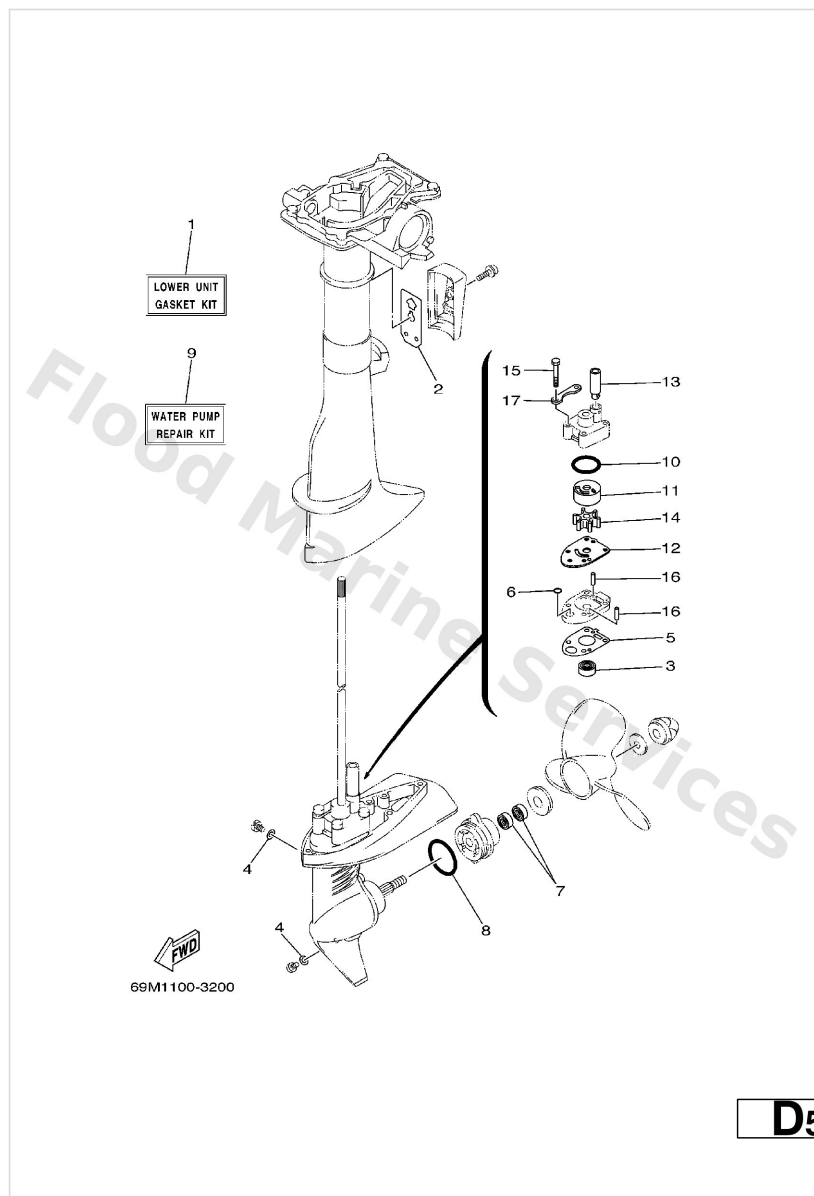
| Ref | Part | |
|-----|------------------------------------------------------|-------------------------|
| 17 | 69M-45113-A0 Gasket, upper casing | Buy now |
| 18 | 68D-G4365-00 Damper, water seal | Buy now |

Repair Kit 2



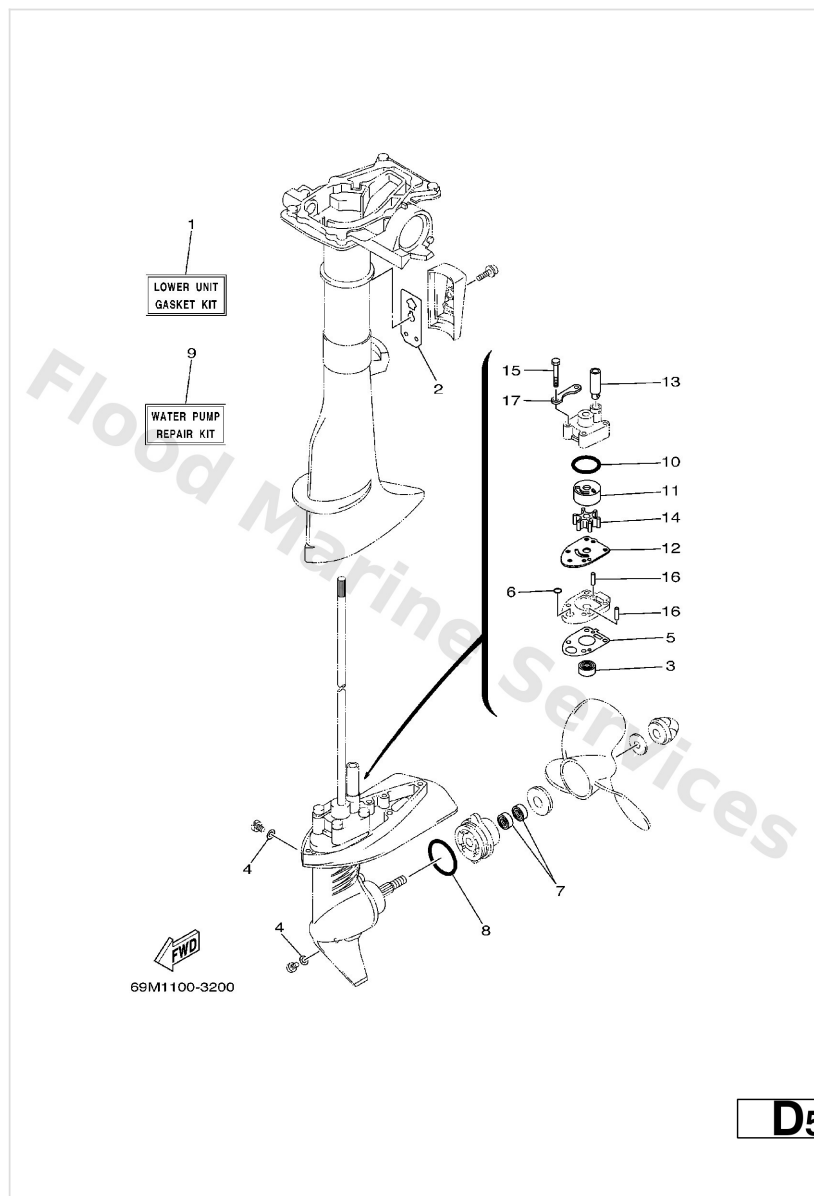
| Ref | Part | |
|-----|-------------------------------------------------------|-------------------------|
| 1 | 69M-W0093-00 Carburetor repair kit | Buy now |
| 2 | 69M-14984-00 Gasket, float chamber | Buy now |
| 3 | 69M-14385-00 Float | Buy now |
| 4 | 6A1-14386-00 Pin, float | Buy now |
| 5 | 98580-03005 Screw, pan head(78g) | Buy now |
| 6 | 62Y-14392-00 Valve, needle | Buy now |
| 7 | 69M-14991-00 Screw | Buy now |
| 8 | 98580-04010 Screw, pan head (e56) | Buy now |
| 9 | 2T4-14397-00 O-ring | Buy now |
| 10 | 69M-14536-00 Gasket | Buy now |
| 11 | 69M-24523-00 Valve | Buy now |
| 12 | 69M-24533-00 O-ring | Buy now |
| 13 | 69M-24535-00 Screw, lever fitting | Buy now |

Repair Kit 3



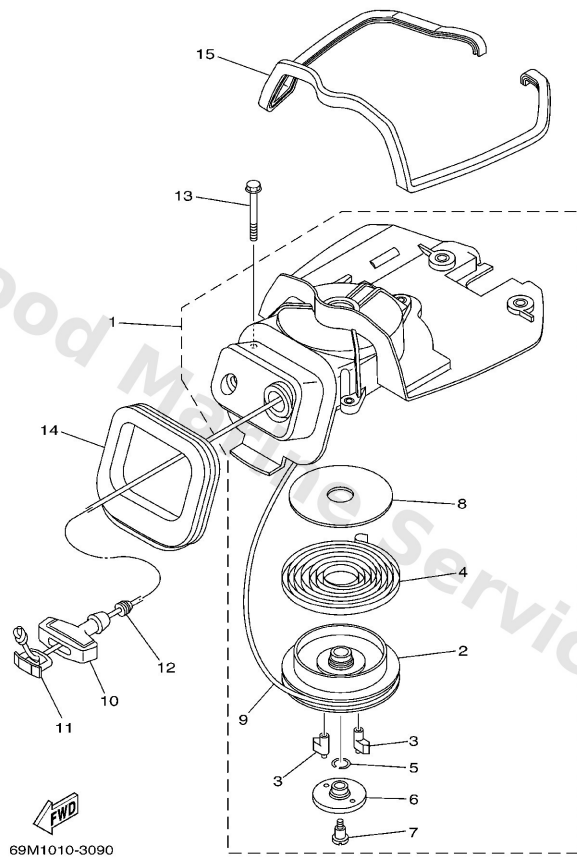
| Ref | Part | |
|-----|--------------------------------------------------------|-------------------------|
| 1 | 69M-WG001-20 Lower Unit Gasket Kit | Buy now |
| 2 | 69M-G5115-00 Gasket, upper casing | Buy now |
| 3 | 93103-09M41 Oil seal | Buy now |
| 4 | 90430-08801 Gasket | Buy now |
| 5 | 69M-G5315-A0 Packing, lower casing | Buy now |
| 6 | 93210-05001 O-ring | Buy now |
| 7 | 93101-13M12 Oil seal | Buy now |
| 8 | 93210-48214 O-ring | Buy now |
| 9 | 69M-WG078-00 Water Pump Repair Kit | Buy now |
| 10 | 93210-33M85 O-ring(615) | Buy now |
| 11 | 6L5-44322-00 Insert, cartridge | Buy now |
| 12 | 69M-G4323-00 Outer plate, cartridge | Buy now |
| 13 | 6E0-44366-00 Damper, water seal 2 | Buy now |
| 14 | 6L5-44352-00 Impeller | Buy now |
| 15 | 97095-06040 Bolt (682) | Buy now |

Repair Kit 3



| Ref | Part | |
|-----|--------------------------------------------------|-------------------------|
| 16 | 93604-18080 Pin. dowel. (647) | Buy now |
| 17 | 69M-G4328-00 Plate | Buy now |

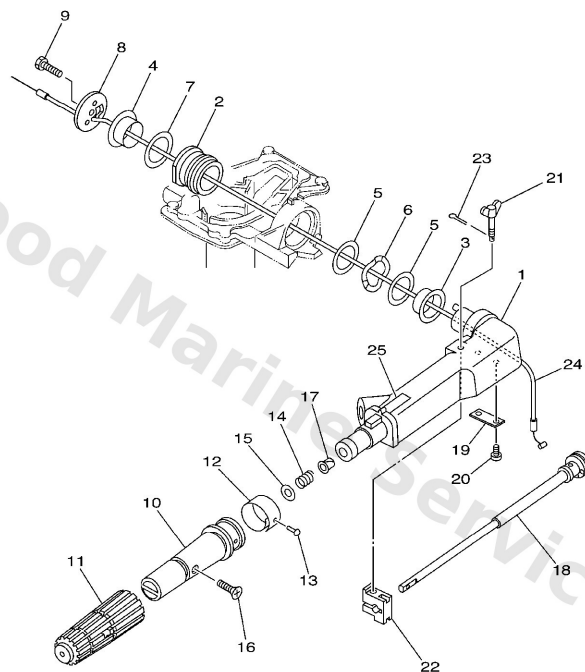
Starter



B6

| Ref | Part | |
|-----|--------------------------------------------------------------|-------------------------|
| 1 | 69M-15710-00 Starter assembly | Buy now |
| 2 | 69M-15714-00 Drum, sheave | Buy now |
| 3 | 69M-15741-00 Pawl, drive | Buy now |
| 4 | 67D-15713-00 Spring, starter | Buy now |
| 5 | 67D-15705-00 Spring, drive pawl | Buy now |
| 6 | 69M-15735-00 Guide, cam | Buy now |
| 7 | 69M-15793-00 Screw | Buy now |
| 8 | 69M-15739-00 Washer, thrust | Buy now |
| 9 | 69M-15751-00 Wire, starter (1.5m) | Buy now |
| 10 | 6G1-15755-00 Handle, starter | Buy now |
| 11 | 6G1-15779-00 Cover | Buy now |
| 12 | 69M-E5789-00 Damper | Buy now |
| 13 | 97595-06560 Bolt, hexagon w/w deep recess | Buy now |
| 14 | 69M-15762-00 Seal, rubber 2 | Buy now |
| 15 | 69M-24182-00 Damper, locating 2 | Buy now |

Steering

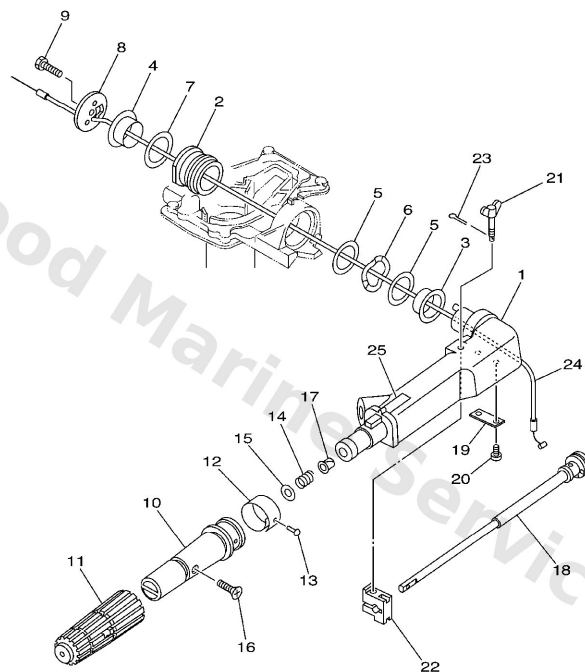


69M1300-3120

C2

| Ref | Part | |
|-----|----------------------------------------------------------|-------------------------|
| 2 | 67D-42129-00 Bushings, rubber | Buy now |
| 3 | 68D-G2171-00 Bushings, 1 | Buy now |
| 4 | 68D-G2172-00 Bushings, 2 | Buy now |
| 5 | 68D-G2181-00 Washer, 1 | Buy now |
| 6 | 69M-G2188-00 Washer,wave | Buy now |
| 7 | 68D-G2182-00 Washer, 2 | Buy now |
| 8 | 68D-G2131-01 Cover, Handle Steering | Buy now |
| 9 | 97075-08025 Bolt, hexagon deep recess | Buy now |
| 10 | 69M-G2119-10 Grip steering handle | Buy now |
| 11 | 6N0-G2177-00 Rubber, handle | Buy now |
| 12 | 69M-G2137-00 Indicator, throttle | Buy now |
| 13 | 90269-02M09 Rivet(615) | Buy now |
| 14 | 90501-23800 Spring (655) | Buy now |
| 15 | 92903-10600 Washer, plate | Buy now |
| 16 | 90149-05M13 Screw, countersunk | Buy now |

Steering

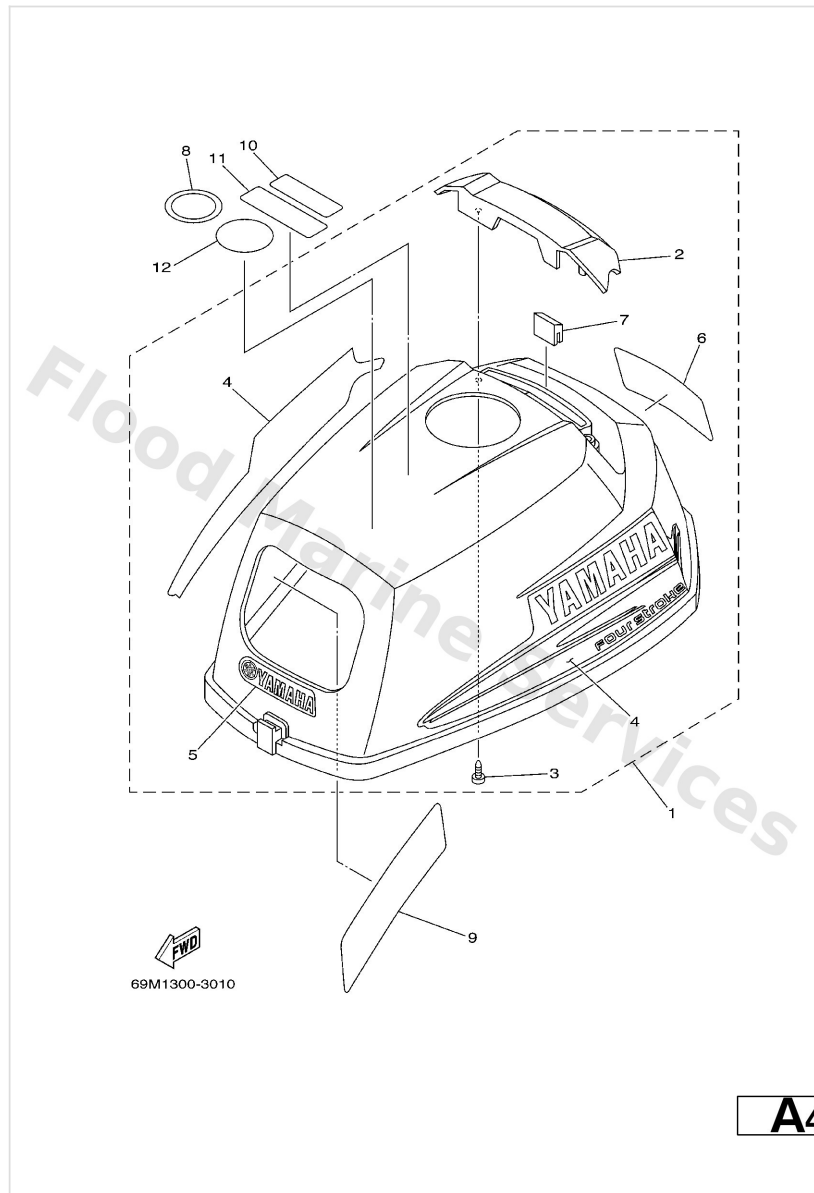



69M1300-3120

C2

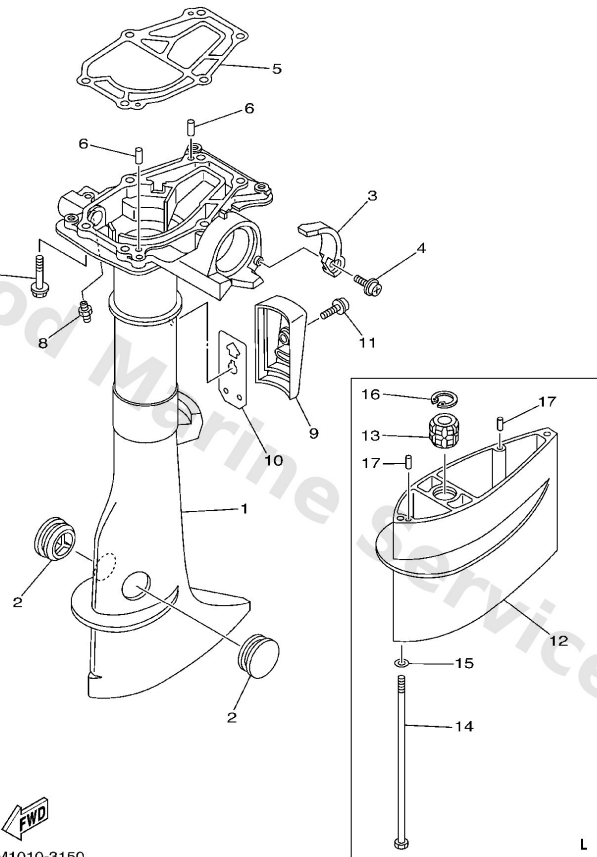
| Ref | Part | |
|-----|----------------------------------------------------------|-------------------------|
| 17 | 90386-08032 Bushing (650) | Buy now |
| 18 | 69M-G2138-00 Lever, throttle | Buy now |
| 19 | 68D-G2159-00 Stay | Buy now |
| 20 | 97885-05012 Screw,pan head (646) | Buy now |
| 21 | 6G1-42125-01 Bolt, friction adjusting | Buy now |
| 22 | 6N0-G2126-00 Piece, friction | Buy now |
| 23 | 91490-16010 Pin, cotter | Buy now |
| 24 | 69M-F6301-00 Throttle cable | Buy now |
| 25 | 68D-H257H-00 Plate, Mark | Buy now |

Top Cowling



| Ref | Part | |
|-----|---------------------------------------------------------------|-------------------------|
| 2 | 69M-G2613-00 Molding Air Duct | Buy now |
| 3 | 97780-40012 Screw, trushead tapping (ge31) | Buy now |
| 4 | 69M-WG070-00 Graphic set | Buy now |
| 5 | 69M-G2677-00 Graphic, front | Buy now |
| 6 | 69M-G2678-10 Graphic Rear | Buy now |
| 7 | 69M-42662-00 Damper | Buy now |
| 8 | 67F-13434-02 Label, Caution | Buy now |
| 9 | 69M-14427-60 Label, Instruction | Buy now |
| 10 | 6A1-2415A-41 Label, caution | Buy now |
| 11 | 6A1-2415A-51 Label Caution | Buy now |
| 12 | 6G8-2415E-00 Label Caution | Buy now |

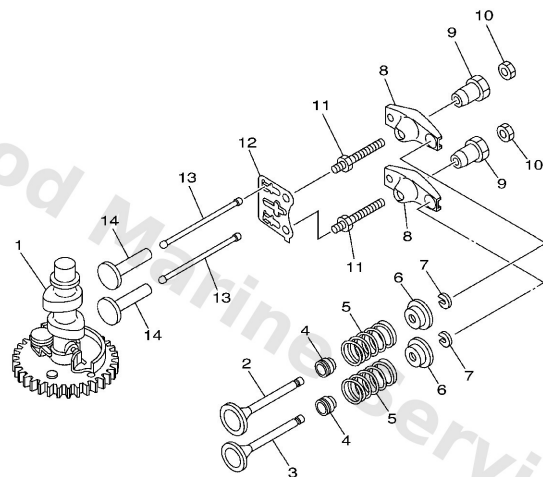
Upper Casing



C6

| Ref | Part | |
|-----|--------------------------------------------------------------|-------------------------|
| 2 | 647-45151-01 Cover, upper casing | Buy now |
| 3 | 69M-G5152-00 Cover,upper casing 2 | Buy now |
| 4 | 90159-05M12 Screw, with washer(6t4) | Buy now |
| 5 | 69M-45113-A0 Gasket, upper casing | Buy now |
| 17 | 93604-12M07 Pin, dowel (688) L | Buy now |
| 7 | 97575-06535 Bolt, hexagon w/w deep recess | Buy now |
| 8 | 93700-06M03 Nipple, grease(6a1) | Buy now |
| 9 | 69M-G5151-00 Cover,upper casing 1 | Buy now |
| 10 | 69M-G5115-00 Gasket,upper casing | Buy now |
| 11 | 90159-06M11 Screw, with washer(6l2) | Buy now |
| 13 | 6L5-45318-00 Bushing, drive shaft L | Buy now |
| 14 | 90101-06M18 Bolt(6l5) L | Buy now |
| 15 | 92990-06600 Washer, plain (646) L | Buy now |
| 16 | 93420-22M03 Cir clip (6e0) L | Buy now |

Valve




69M1010-3050

B2

| Ref | Part | |
|-----|--------------------------------------------------------|-------------------------|
| 1 | 69M-12170-20 Camshaft assembly 1 | Buy now |
| 2 | 67D-12111-00 Valve, intake | Buy now |
| 3 | 67D-12121-00 Valve, exhaust | Buy now |
| 4 | 51Y-12119-00 Seal, valve stem | Buy now |
| 5 | 68D-E2113-00 Spring, valve inne | Buy now |
| 6 | 7NJ-12117-00 Retainer, valve spring | Buy now |
| 7 | 7NJ-12118-00 Cotter, valve | Buy now |
| 8 | 67D-12151-00 Arm, valve rocker | Buy now |
| 9 | 7FK-12165-00 Pivot, rocker arm | Buy now |
| 10 | 7FK-12158-00 Nut, lock | Buy now |
| 11 | 67D-12157-00 Bolt | Buy now |
| 12 | 69M-E2155-00 Guide, push rod | Buy now |
| 13 | 69M-12154-00 Rod, valve push | Buy now |
| 14 | JA9-12153-00 Lifter, valve | Buy now |

Disclaimer

This document is provided for convenience only. It is **not** an official Yamaha publication and is **not supplied, endorsed, or approved** by Yamaha Motor Co., Ltd.

Reasonable efforts are made to keep information accurate; however diagrams, part references, supersessions, descriptions, and applicability may contain errors or omissions. Specifications and part availability may change without notice.

You are responsible for confirming the correct parts for your engine (including model code, year, serial range, and any superseded part numbers) before ordering or fitting.