



# Yamaha F2.5BMH 2024

## Parts Manual

[www.floodmarine.co.uk](http://www.floodmarine.co.uk)

+44 2882 246 539

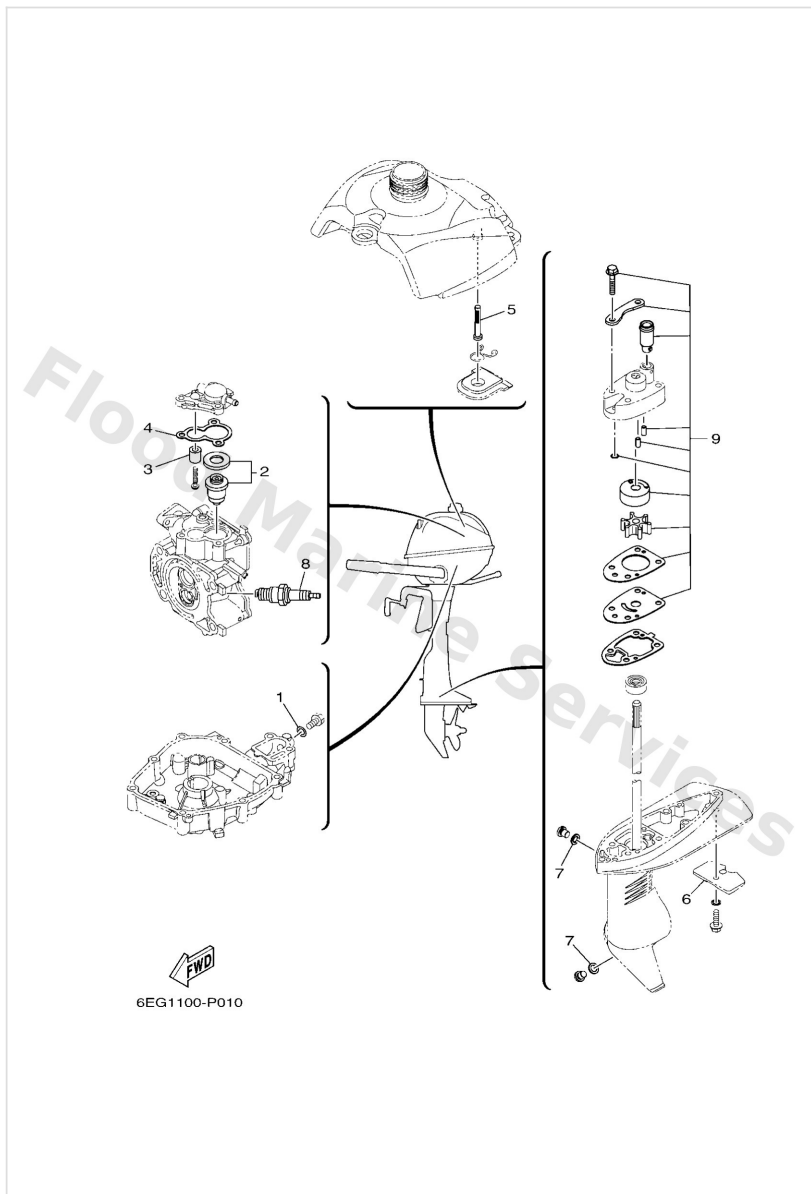
Authorised Yamaha Dealers



# Contents

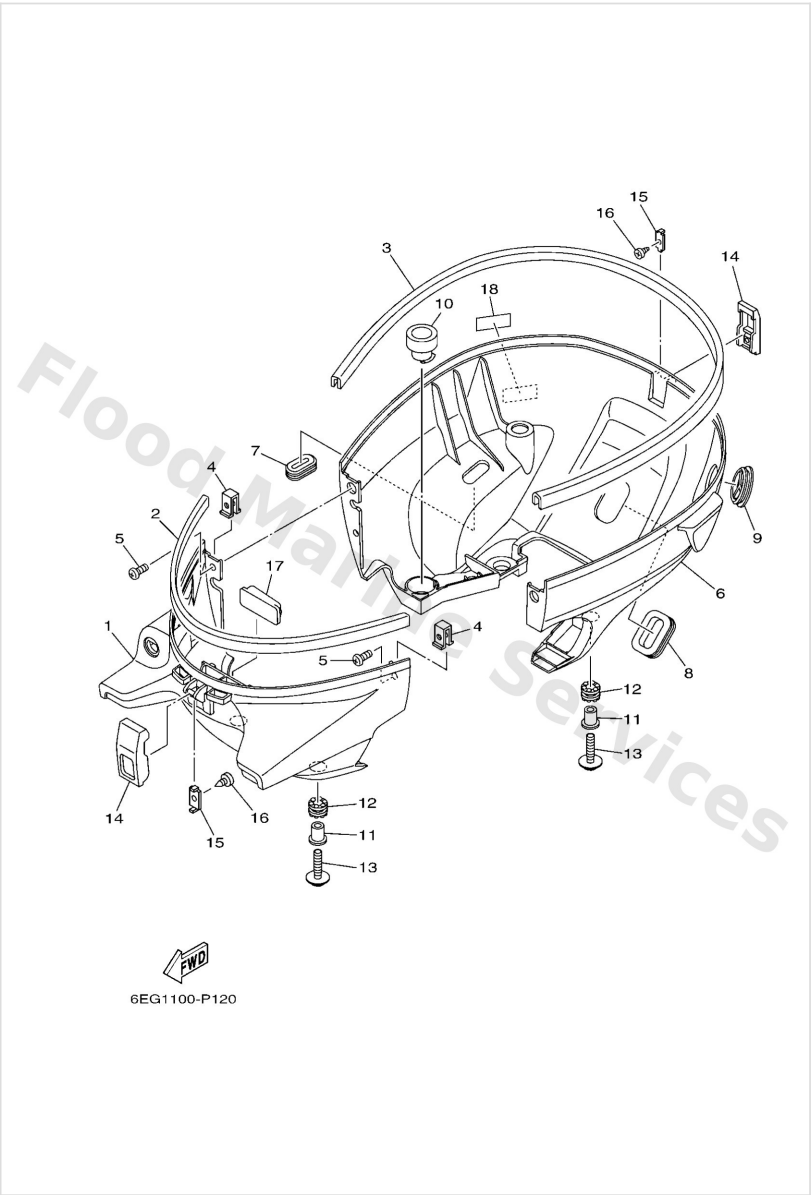
|                                   |    |
|-----------------------------------|----|
| <b>SCHEDULED SERVICE PARTS</b>    | 3  |
| <b>BOTTOM COWLING</b>             | 4  |
| <b>BRACKET</b>                    | 6  |
| <b>CARBURETOR</b>                 | 9  |
| <b>CONTROL</b>                    | 11 |
| <b>CRANKSHAFT &amp; PISTON</b>    | 13 |
| <b>CYLINDER &amp; CRANKCASE 1</b> | 14 |
| <b>CYLINDER &amp; CRANKCASE 2</b> | 16 |
| <b>FUEL</b>                       | 18 |
| <b>GENERATOR</b>                  | 21 |
| <b>INTAKE</b>                     | 22 |
| <b>LOWER CASING &amp; DRIVE 1</b> | 23 |
| <b>LOWER CASING &amp; DRIVE 2</b> | 26 |
| <b>REPAIR KIT 1</b>               | 28 |
| <b>REPAIR KIT 2</b>               | 30 |
| <b>REPAIR KIT 3</b>               | 31 |
| <b>STARTER</b>                    | 33 |
| <b>STEERING</b>                   | 34 |
| <b>TOP COWLING</b>                | 37 |
| <b>UPPER CASING</b>               | 38 |
| <b>VALVE</b>                      | 39 |

## Scheduled Service Parts



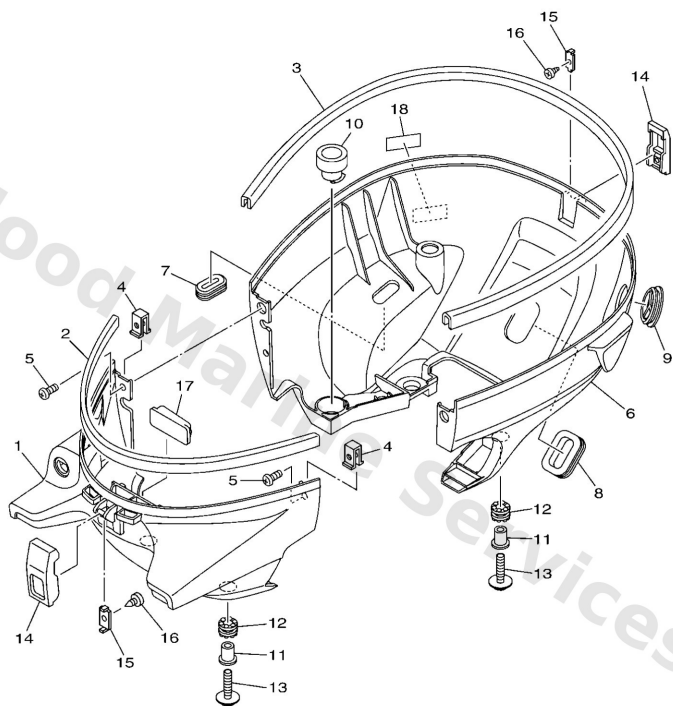
| Ref | Part  |                         |
|-----|---|-------------------------|
| 1   | <a href="#">9043008143</a><br>Gasket (256-11198-00) | <a href="#">Buy now</a> |
| 2   | <a href="#">66M1241101</a><br>Thermostat            | <a href="#">Buy now</a> |
| 3   | <a href="#">6G81132500</a><br>Anode                 | <a href="#">Buy now</a> |
| 4   | <a href="#">67D12414A0</a><br>Gasket, cover         | <a href="#">Buy now</a> |
| 5   | <a href="#">6L52425100</a><br>Strainer 1            | <a href="#">Buy now</a> |
| 6   | <a href="#">6L54525103</a><br>Anode                 | <a href="#">Buy now</a> |
| 7   | <a href="#">9043008003</a><br>Gasket                | <a href="#">Buy now</a> |
| 8   | <a href="#">9470200372</a><br>Plug, spark (cr6hsb)  | <a href="#">Buy now</a> |
| 9   | <a href="#">6EGW007802</a><br>Water pump repair kit | <a href="#">Buy now</a> |

# Bottom Cowling



| Ref | Part  |                         |
|-----|---|-------------------------|
| 1   | <a href="#">6EGG271101</a><br>Cowling, bottom 1   | <a href="#">Buy now</a> |
| 2   | <a href="#">6EG4262800</a><br>Seal                | <a href="#">Buy now</a> |
| 3   | <a href="#">6EG4262900</a><br>Seal                | <a href="#">Buy now</a> |
| 4   | <a href="#">6EGG277400</a><br>Stay, apron 1       | <a href="#">Buy now</a> |
| 5   | <a href="#">9015705013</a><br>Screw, pan head     | <a href="#">Buy now</a> |
| 6   | <a href="#">6EGG271201</a><br>Cowling, bottom 2   | <a href="#">Buy now</a> |
| 7   | <a href="#">6EGG272700</a><br>Grommet             | <a href="#">Buy now</a> |
| 8   | <a href="#">6EGG272400</a><br>Grommet             | <a href="#">Buy now</a> |
| 9   | <a href="#">6474515102</a><br>Cover, upper casing | <a href="#">Buy now</a> |
| 10  | <a href="#">6EGE531601</a><br>Damper 1            | <a href="#">Buy now</a> |
| 11  | <a href="#">90387068N9</a><br>Collar              | <a href="#">Buy now</a> |
| 12  | <a href="#">6EGG276800</a><br>Damper              | <a href="#">Buy now</a> |
| 13  | <a href="#">9011906309</a><br>Bolt, with washer   | <a href="#">Buy now</a> |
| 14  | <a href="#">6L54264700</a><br>Holder, clamp band  | <a href="#">Buy now</a> |
| 15  | <a href="#">6EGG282300</a><br>Plate, stop         | <a href="#">Buy now</a> |

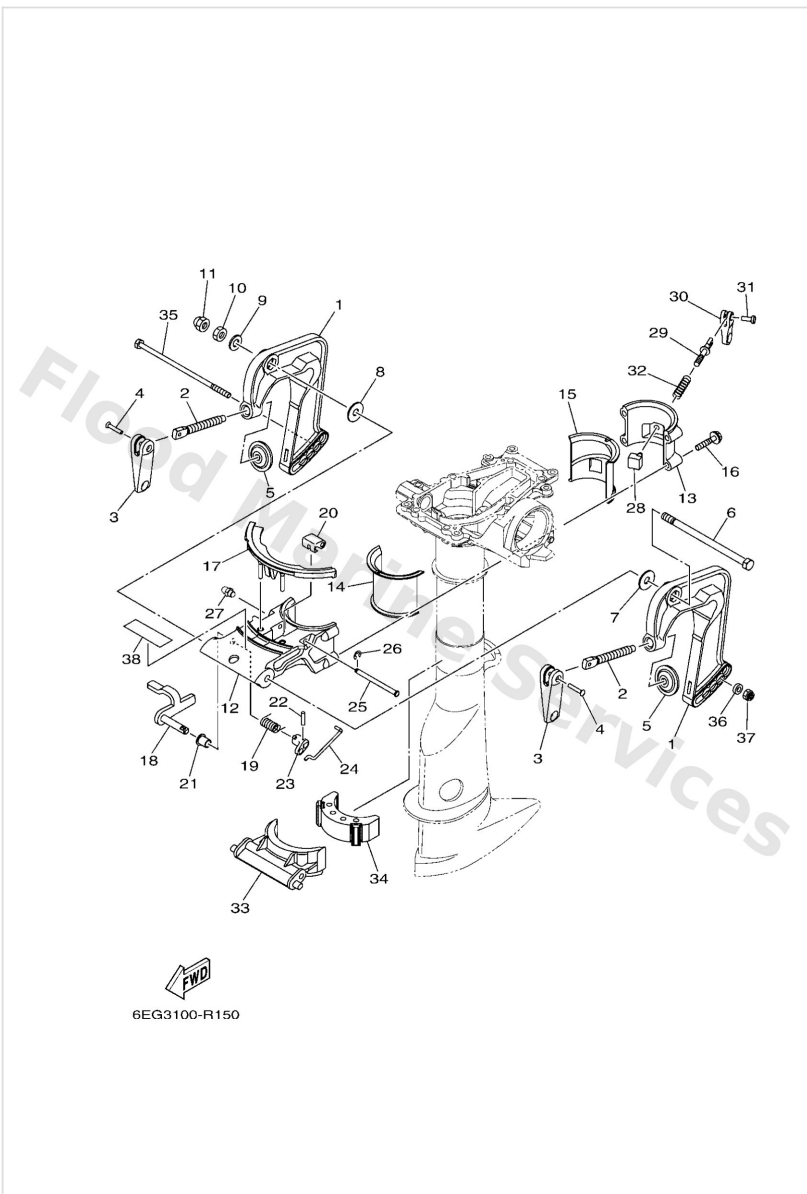
## Bottom Cowling



6EG1100-P120

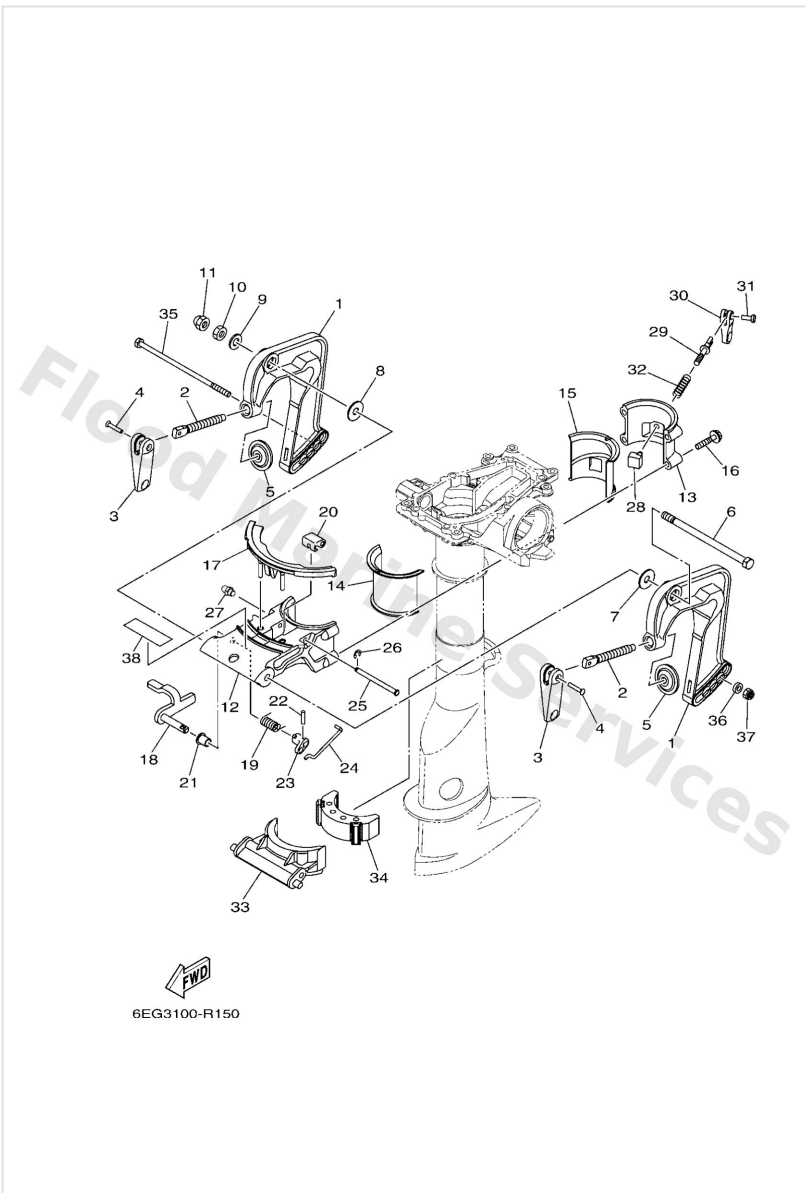
| Ref | Part  |                         |
|-----|---|-------------------------|
| 16  | <a href="#">9016703M02</a><br>Screw, tapping(6l5) | <a href="#">Buy now</a> |
| 17  | <a href="#">6EGG453201</a><br>Stopper, upper mou  | <a href="#">Buy now</a> |
| 18  | <a href="#">6EGF459100</a><br>Emblem, fuel cock   | <a href="#">Buy now</a> |

# Bracket



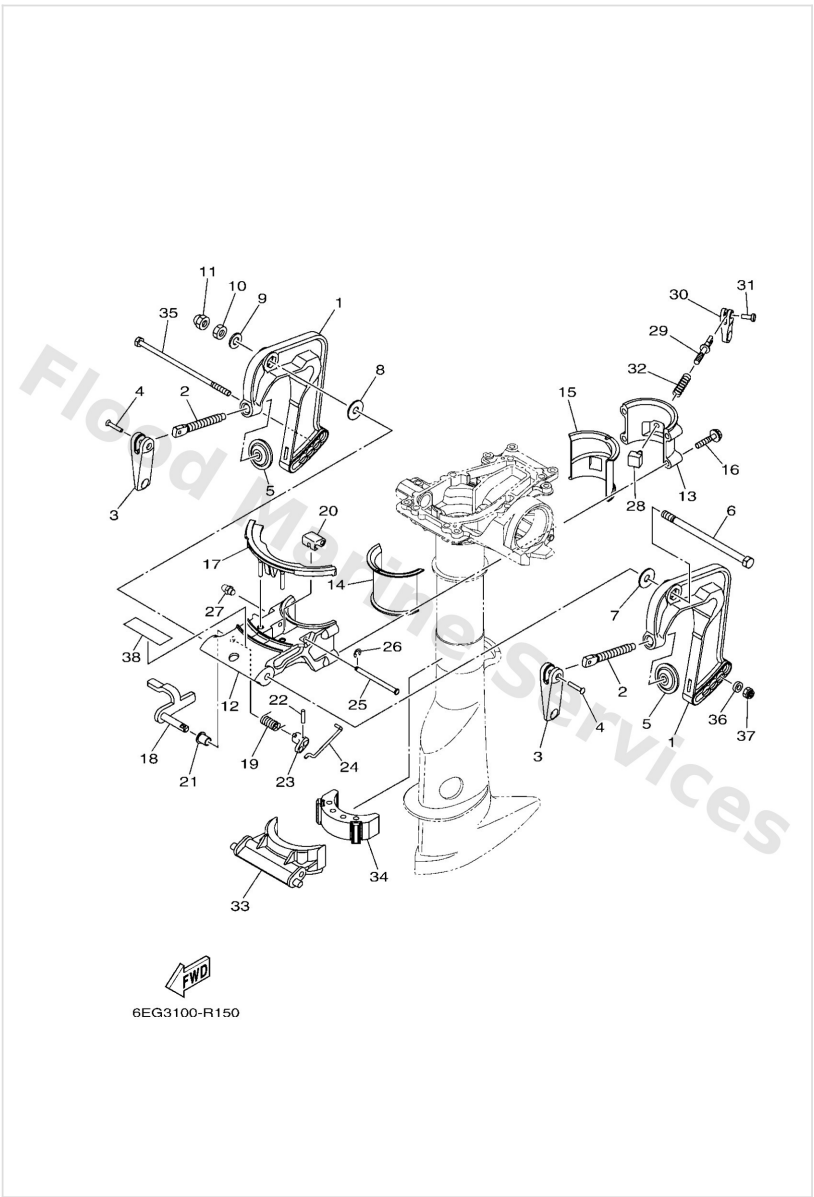
| Ref | Part  |                         |
|-----|---|-------------------------|
| 1   | <a href="#">6EGG3111008D</a><br>Bracket, clamp 1    | <a href="#">Buy now</a> |
| 2   | <a href="#">6E04311601</a><br>Screw, transom clamp  | <a href="#">Buy now</a> |
| 3   | <a href="#">6EEG311800</a><br>Handle, transom cl    | <a href="#">Buy now</a> |
| 4   | <a href="#">9024304M01</a><br>Pin(6a1)              | <a href="#">Buy now</a> |
| 5   | <a href="#">6484311401</a><br>Pad, transom clamp    | <a href="#">Buy now</a> |
| 6   | <a href="#">9010108M07</a><br>Bolt(6e0)             | <a href="#">Buy now</a> |
| 7   | <a href="#">9020208022</a><br>Washer 6464313202     | <a href="#">Buy now</a> |
| 8   | <a href="#">9020208004</a><br>Washer, plate         | <a href="#">Buy now</a> |
| 9   | <a href="#">9299008200</a><br>Ybs66-8 washer, plain | <a href="#">Buy now</a> |
| 10  | <a href="#">9538008600</a><br>Nut (661)             | <a href="#">Buy now</a> |
| 11  | <a href="#">9538008800</a><br>Nut crown (2g2)       | <a href="#">Buy now</a> |
| 12  | <a href="#">6EGG3311008D</a><br>Bracket, swivel 1   | <a href="#">Buy now</a> |
| 13  | <a href="#">6EGG3312008D</a><br>Bracket, swivel 2   | <a href="#">Buy now</a> |
| 14  | <a href="#">6EGG253700</a><br>Bushing,pivot shaft 1 | <a href="#">Buy now</a> |
| 15  | <a href="#">6EGG253800</a><br>Bushing, pivot sha    | <a href="#">Buy now</a> |

# Bracket



| Ref | Part  |                         |
|-----|---|-------------------------|
| 16  | <a href="#">97E7506530</a><br>Bolt, hexagon w/w deep recess | <a href="#">Buy now</a> |
| 17  | <a href="#">6EGG367900</a><br>Cover                         | <a href="#">Buy now</a> |
| 18  | <a href="#">6EGG318000</a><br>Tilt stop lever as            | <a href="#">Buy now</a> |
| 19  | <a href="#">6EGG318800</a><br>Spring                        | <a href="#">Buy now</a> |
| 20  | <a href="#">6EGG318600</a><br>Lever                         | <a href="#">Buy now</a> |
| 21  | <a href="#">9038608032</a><br>Bushing (650)                 | <a href="#">Buy now</a> |
| 22  | <a href="#">9169020010</a><br>Pin, spring                   | <a href="#">Buy now</a> |
| 23  | <a href="#">6EGG318500</a><br>Lever, tilt stop 2            | <a href="#">Buy now</a> |
| 24  | <a href="#">6EGG316400</a><br>Rod, tilt lock                | <a href="#">Buy now</a> |
| 25  | <a href="#">6EGG316600</a><br>Pin                           | <a href="#">Buy now</a> |
| 26  | <a href="#">9908004600</a><br>Circlip (eu0)                 | <a href="#">Buy now</a> |
| 27  | <a href="#">9370006M03</a><br>Nipple, grease(6a1)           | <a href="#">Buy now</a> |
| 28  | <a href="#">6EGG252801</a><br>Plate, friction               | <a href="#">Buy now</a> |
| 29  | <a href="#">6EGG252900</a><br>Screw, friction pi            | <a href="#">Buy now</a> |
| 30  | <a href="#">6EEG256100</a><br>Knob, steering loc            | <a href="#">Buy now</a> |

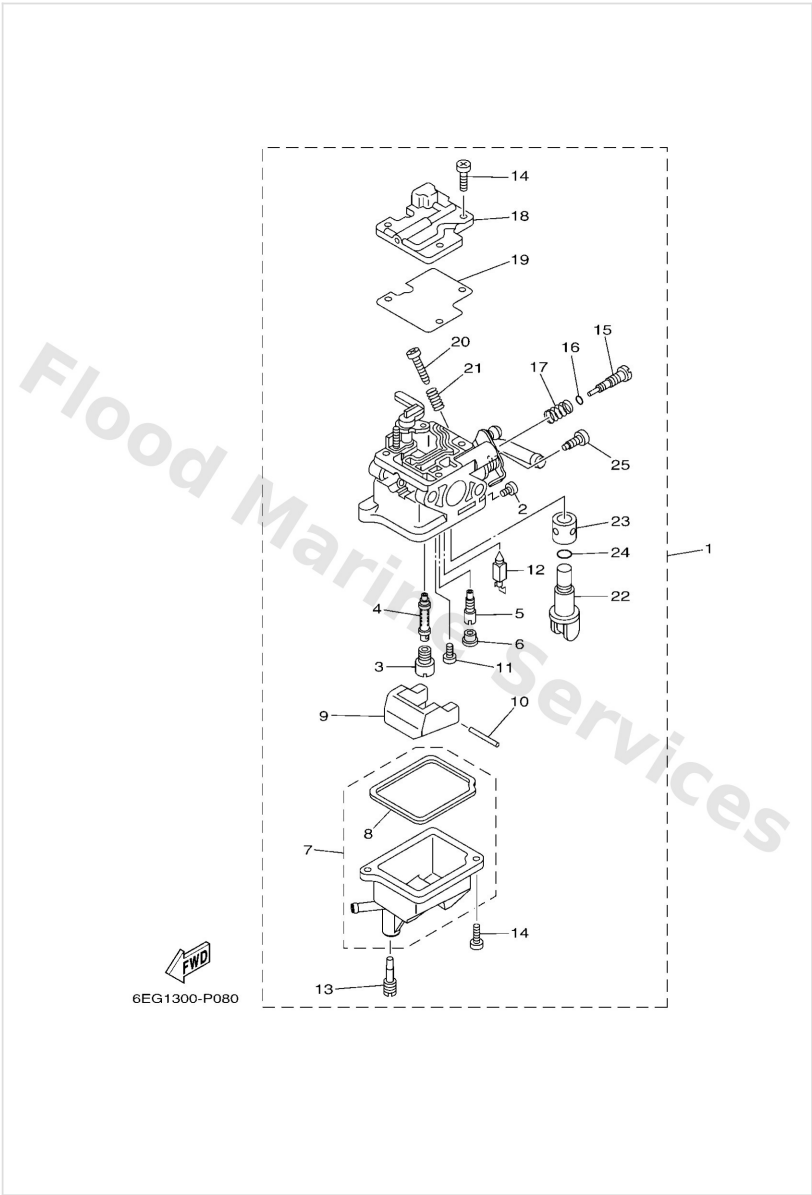
# Bracket



| Ref | Part  |                         |
|-----|---|-------------------------|
| 31  | <a href="#">9026604M05</a><br>Rivet(6I5)                | <a href="#">Buy now</a> |
| 32  | <a href="#">9050112803</a><br>Spring, compression       | <a href="#">Buy now</a> |
| 33  | <a href="#">6EGG335100</a><br>Receiver, thrust          | <a href="#">Buy now</a> |
| 34  | <a href="#">69M4455700</a><br>Mount damper, lower front | <a href="#">Buy now</a> |
| 35  | <a href="#">9010106062</a><br>Bolt                      | <a href="#">Buy now</a> |
| 36  | <a href="#">9020106040</a><br>Washer 6464337400         | <a href="#">Buy now</a> |
| 37  | <a href="#">9578006300</a><br>Nut, nylon (6g1)          | <a href="#">Buy now</a> |
| 38  | <a href="#">6EGG369100</a><br>Indicator, tilt           | <a href="#">Buy now</a> |

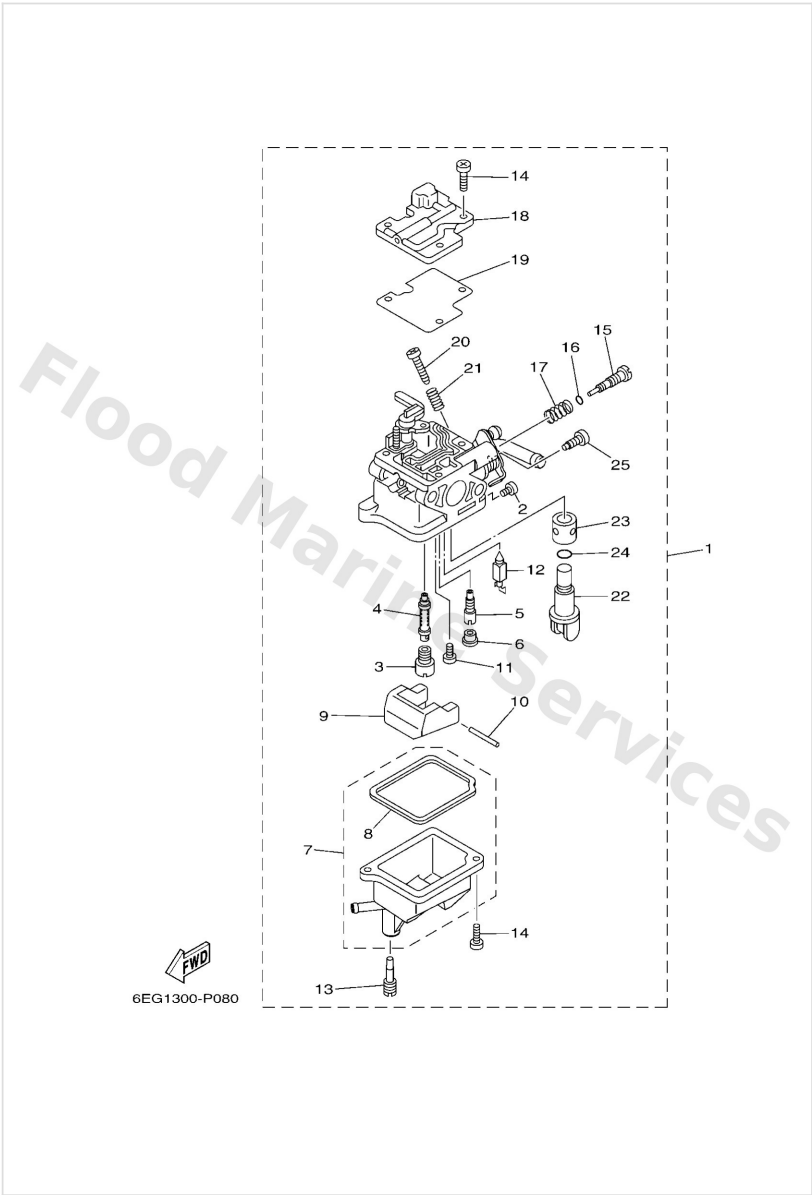


Carburetor



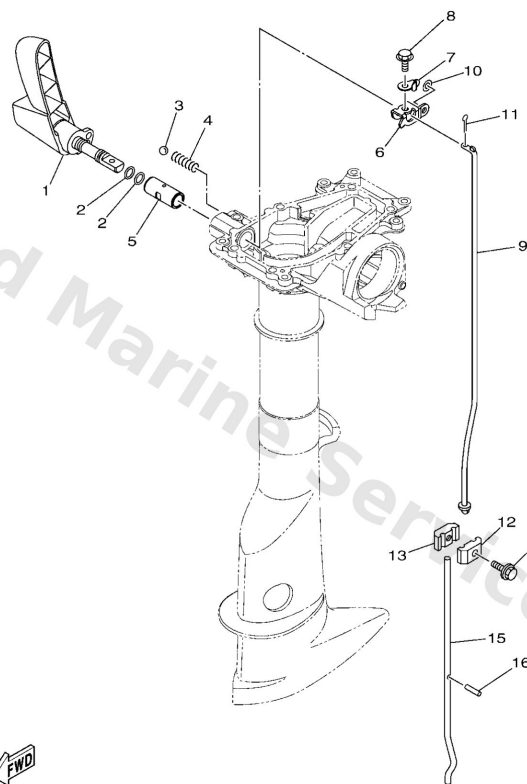
| Ref | Part  |                         |
|-----|---|-------------------------|
| 1   | <a href="#">6EG1430130</a><br>Carburetor assembly 1 | <a href="#">Buy now</a> |
| 2   | <a href="#">9789004007</a><br>Screw, pan head (7h3) | <a href="#">Buy now</a> |
| 3   | <a href="#">69M1434331</a><br>Jet, main (#62)       | <a href="#">Buy now</a> |
| 4   | <a href="#">69M1434100</a><br>Nozzle, main          | <a href="#">Buy now</a> |
| 5   | <a href="#">69M1434268</a><br>Jet, pilot (#37)      | <a href="#">Buy now</a> |
| 6   | <a href="#">69M1496601</a><br>Lever, starter        | <a href="#">Buy now</a> |
| 7   | <a href="#">6EG1438100</a><br>Body, float chamber   | <a href="#">Buy now</a> |
| 8   | <a href="#">69M1498401</a><br>Gasket, float chamber | <a href="#">Buy now</a> |
| 9   | <a href="#">69M1438500</a><br>Float                 | <a href="#">Buy now</a> |
| 10  | <a href="#">6A11438600</a><br>Pin, float            | <a href="#">Buy now</a> |
| 11  | <a href="#">9858003005</a><br>Screw, pan head(78g)  | <a href="#">Buy now</a> |
| 12  | <a href="#">62Y1439200</a><br>Valve, needle         | <a href="#">Buy now</a> |
| 13  | <a href="#">69M1499100</a><br>Screw                 | <a href="#">Buy now</a> |
| 14  | <a href="#">9858004010</a><br>Screw, pan head (e56) | <a href="#">Buy now</a> |
| 15  | <a href="#">69M1432320</a><br>Screw, air adjusting  | <a href="#">Buy now</a> |

Carburetor



| Ref | Part  |                         |
|-----|---|-------------------------|
| 16  | <a href="#">2T41439701</a><br>O-ring                  | <a href="#">Buy now</a> |
| 17  | <a href="#">62Y1433400</a><br>Spring, air adjusting   | <a href="#">Buy now</a> |
| 18  | <a href="#">69M1452700</a><br>Plate                   | <a href="#">Buy now</a> |
| 19  | <a href="#">69M1453601</a><br>Gasket                  | <a href="#">Buy now</a> |
| 20  | <a href="#">69W1432100</a><br>Screw, throttle         | <a href="#">Buy now</a> |
| 21  | <a href="#">62Y1421200</a><br>Spring, pilot adjusting | <a href="#">Buy now</a> |
| 22  | <a href="#">69M2452400</a><br>Lever, cock             | <a href="#">Buy now</a> |
| 23  | <a href="#">69M2452300</a><br>Valve                   | <a href="#">Buy now</a> |
| 24  | <a href="#">69M2453300</a><br>O-ring                  | <a href="#">Buy now</a> |
| 25  | <a href="#">69M2453500</a><br>Screw, lever fitting    | <a href="#">Buy now</a> |

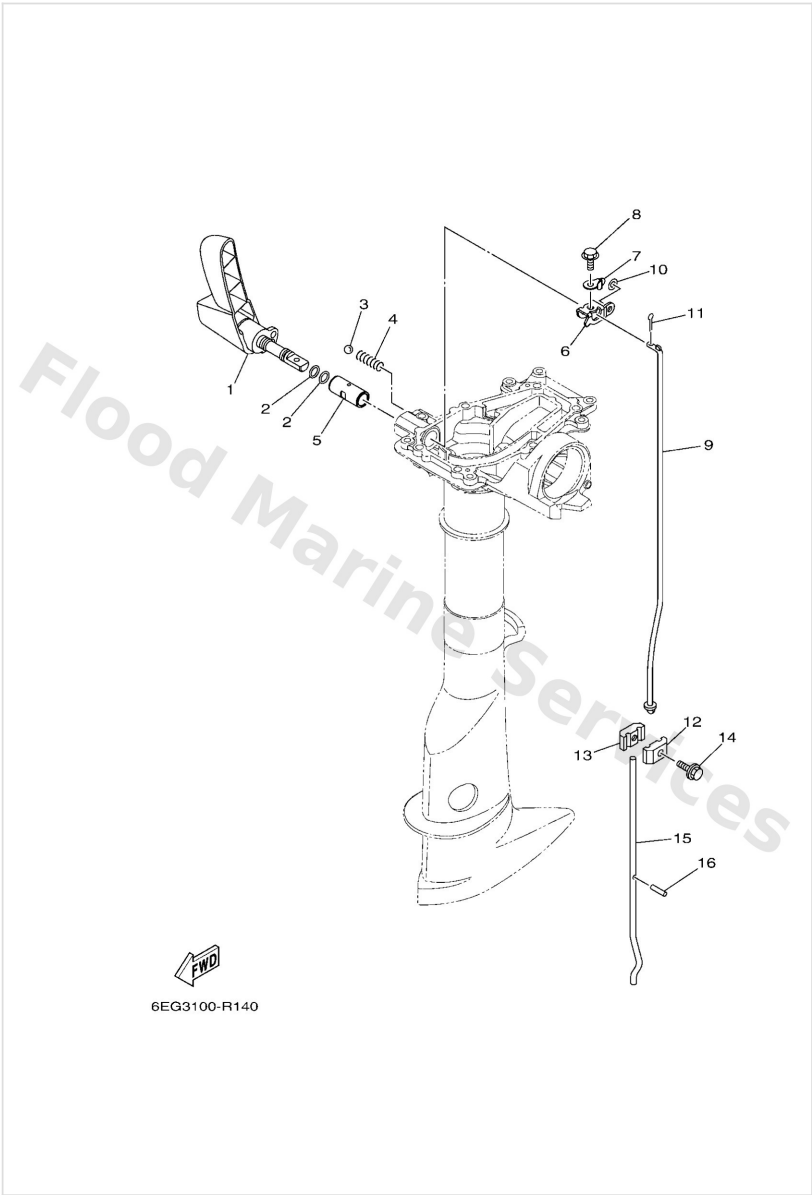
## Control



  
6EG3100-R140

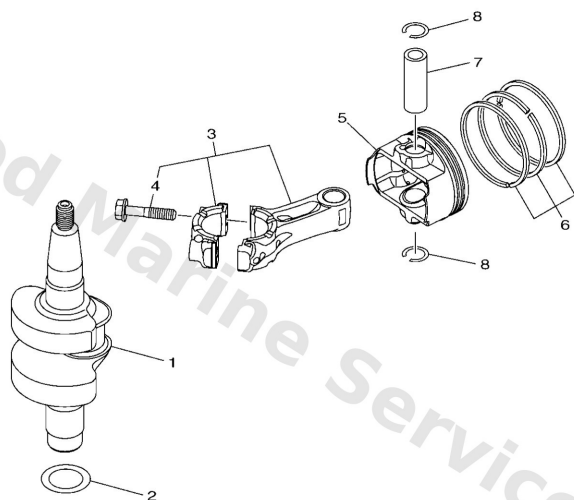
| Ref | Part   |                         |
|-----|--|-------------------------|
| 1   | <a href="#">6EGG411100</a><br>Handle, gear shift       | <a href="#">Buy now</a> |
| 2   | <a href="#">9321009811</a><br>O-ring                   | <a href="#">Buy now</a> |
| 3   | <a href="#">9350516024</a><br>Ball                     | <a href="#">Buy now</a> |
| 4   | <a href="#">9050112802</a><br>Spring,compression       | <a href="#">Buy now</a> |
| 5   | <a href="#">68DG412201</a><br>Bushing, shift rod lever | <a href="#">Buy now</a> |
| 6   | <a href="#">6EGG412100</a><br>Lever, shift rod         | <a href="#">Buy now</a> |
| 7   | <a href="#">6EGG412600</a><br>Washer, shift rod        | <a href="#">Buy now</a> |
| 8   | <a href="#">9759505512</a><br>Bolt, hexagon            | <a href="#">Buy now</a> |
| 9   | <a href="#">69M4414300</a><br>Rod, shift               | <a href="#">Buy now</a> |
| 10  | <a href="#">9299005600</a><br>Washer, plain (646)      | <a href="#">Buy now</a> |
| 11  | <a href="#">9149016010</a><br>Pin, cotter              | <a href="#">Buy now</a> |
| 12  | <a href="#">6N0G414510</a><br>Connector 1              | <a href="#">Buy now</a> |
| 13  | <a href="#">6N0G414610</a><br>Connector 2              | <a href="#">Buy now</a> |
| 14  | <a href="#">9011906285</a><br>Bolt, with washer        | <a href="#">Buy now</a> |
| 15  | <a href="#">6EGG414400</a><br>Rod, shift<br>S(17.0")   | <a href="#">Buy now</a> |

Control



| Ref | Part   |                         |
|-----|--|-------------------------|
| 15  | <a href="#">6EGG414410</a><br>Rod, shift<br>L(22.0") | <a href="#">Buy now</a> |
| 16  | <a href="#">9160925014</a><br>Pin, Spring            | <a href="#">Buy now</a> |

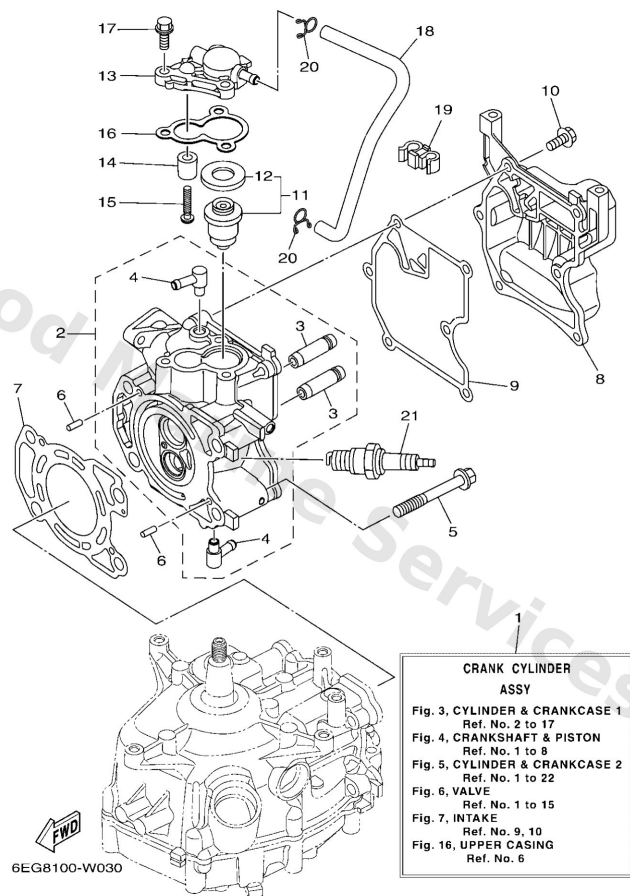
## Crankshaft & Piston



  
6EG1100-P040

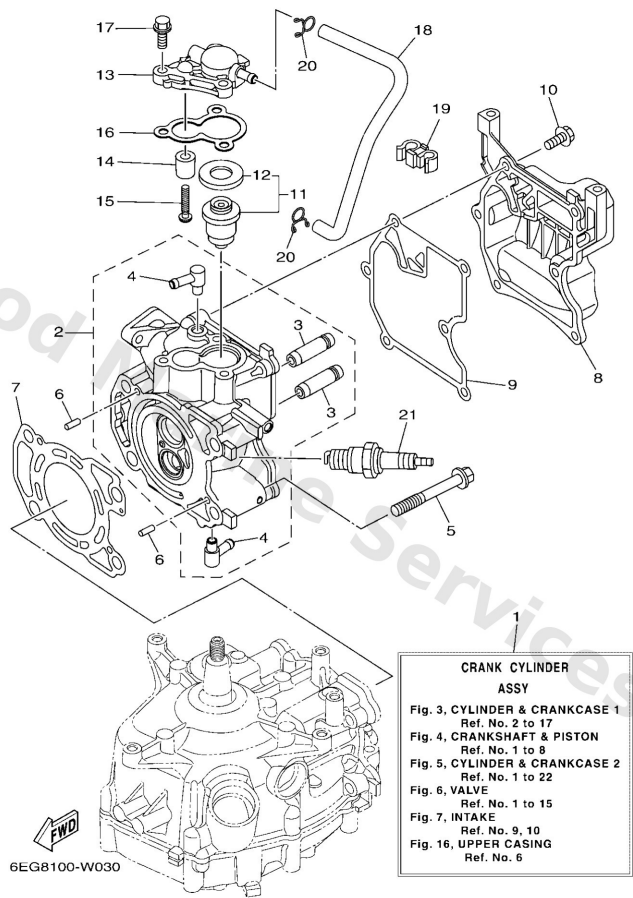
| Ref | Part   |                         |
|-----|--|-------------------------|
| 1   | <a href="#">6EGE141001</a><br>Crankshaft               | <a href="#">Buy now</a> |
| 2   | <a href="#">9020123008</a><br>Washer, plate            | <a href="#">Buy now</a> |
| 3   | <a href="#">6EGE165000</a><br>Connecting rod assembly  | <a href="#">Buy now</a> |
| 4   | <a href="#">7DXE165400</a><br>Bolt, connecting rod     | <a href="#">Buy now</a> |
| 5   | <a href="#">6EGE163110</a><br>Piston (std)             | <a href="#">Buy now</a> |
| 5   | <a href="#">6EGE163510</a><br>Piston (0.25mm o/s<br>AP | <a href="#">Buy now</a> |
| 5   | <a href="#">6EGE163610</a><br>Piston (0.50mm o/s<br>AP | <a href="#">Buy now</a> |
| 6   | <a href="#">69ME160310</a><br>Piston ring set (s       | <a href="#">Buy now</a> |
| 6   | <a href="#">69ME160410</a><br>Piston ring set (0<br>AP | <a href="#">Buy now</a> |
| 6   | <a href="#">69ME160510</a><br>Piston ring set (0<br>AP | <a href="#">Buy now</a> |
| 7   | <a href="#">6EGE163300</a><br>Pin, piston              | <a href="#">Buy now</a> |
| 8   | <a href="#">9345013811</a><br>Circlip(3nw)             | <a href="#">Buy now</a> |

# Cylinder & Crankcase 1



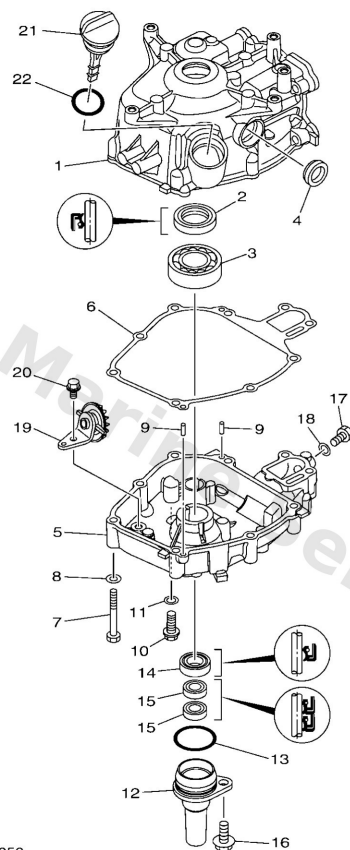
| Ref | Part   |                         |
|-----|--|-------------------------|
| 1   | <a href="#">6EGWE090041S</a><br>Crank cylinder ass     | <a href="#">Buy now</a> |
| 2   | <a href="#">6EGWE110001S</a><br>Cylinder head assembly | <a href="#">Buy now</a> |
| 3   | <a href="#">6EEE113310</a><br>Guide, valve 1           | <a href="#">Buy now</a> |
| 4   | <a href="#">6761137200</a><br>Nipple, hose             | <a href="#">Buy now</a> |
| 5   | <a href="#">9010508M36</a><br>Bolt (6g8)               | <a href="#">Buy now</a> |
| 6   | <a href="#">9360412M07</a><br>Pin, dowel (688)         | <a href="#">Buy now</a> |
| 7   | <a href="#">6EGE118100</a><br>Gasket, cylinder h       | <a href="#">Buy now</a> |
| 8   | <a href="#">6EGE119100</a><br>Cover, cylinder he       | <a href="#">Buy now</a> |
| 9   | <a href="#">6EGE119300</a><br>Gasket, head cover       | <a href="#">Buy now</a> |
| 10  | <a href="#">9010506039</a><br>Bolt, flange             | <a href="#">Buy now</a> |
| 11  | <a href="#">66M1241101</a><br>Thermostat               | <a href="#">Buy now</a> |
| 12  | <a href="#">6881241200</a><br>Seal, thermostat         | <a href="#">Buy now</a> |
| 13  | <a href="#">6EGE2413001S</a><br>Cover, thermostat      | <a href="#">Buy now</a> |
| 14  | <a href="#">6G81132500</a><br>Anode                    | <a href="#">Buy now</a> |
| 15  | <a href="#">9788005025</a><br>Screw, panhead (a93)     | <a href="#">Buy now</a> |

# Cylinder & Crankcase 1



| Ref | Part   |                         |
|-----|--|-------------------------|
| 16  | <a href="#">67D12414A0</a><br>Gasket, cover        | <a href="#">Buy now</a> |
| 17  | <a href="#">9011906MA2</a><br>Bolt, with washer    | <a href="#">Buy now</a> |
| 18  | <a href="#">9044509808</a><br>Hose                 | <a href="#">Buy now</a> |
| 19  | <a href="#">9046409013</a><br>Clamp                | <a href="#">Buy now</a> |
| 20  | <a href="#">9046709M09</a><br>Clip(6k8)            | <a href="#">Buy now</a> |
| 21  | <a href="#">9470200372</a><br>Plug, spark (cr6hsb) | <a href="#">Buy now</a> |

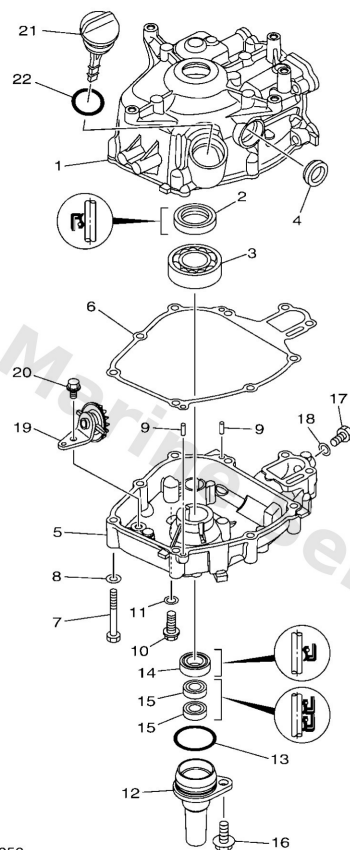
## Cylinder & Crankcase 2



| Ref | Part  |                         |
|-----|---|-------------------------|
| 1   | <a href="#">6EGE1311001S</a><br>Cylinder 1                  | <a href="#">Buy now</a> |
| 2   | <a href="#">9310220814</a><br>Oil seal                      | <a href="#">Buy now</a> |
| 3   | <a href="#">93306272Y2</a><br>Bearing                       | <a href="#">Buy now</a> |
| 4   | <a href="#">3Y61536100</a><br>Gauge, level                  | <a href="#">Buy now</a> |
| 5   | <a href="#">6EGE5111001S</a><br>Crankcase 1                 | <a href="#">Buy now</a> |
| 6   | <a href="#">6EG1135100</a><br>Gasket, cylinder              | <a href="#">Buy now</a> |
| 7   | <a href="#">9701306045</a><br>Bolt, hexagon                 | <a href="#">Buy now</a> |
| 8   | <a href="#">9290306600</a><br>Washer, plain (646)           | <a href="#">Buy now</a> |
| 9   | <a href="#">9360412M07</a><br>Pin, dowel (688)              | <a href="#">Buy now</a> |
| 10  | <a href="#">9010508M76</a><br>Bolt, washer based            | <a href="#">Buy now</a> |
| 11  | <a href="#">9020108818</a><br>Washer                        | <a href="#">Buy now</a> |
| 12  | <a href="#">6EGE539600CA</a><br>Housing, oil seal           | <a href="#">Buy now</a> |
| 13  | <a href="#">9321035803</a><br>O-ring                        | <a href="#">Buy now</a> |
| 15  | <a href="#">9310209800</a><br>Oil seal                      | <a href="#">Buy now</a> |
| 16  | <a href="#">97E9508520</a><br>Bolt, hexagon w/w deep recess | <a href="#">Buy now</a> |

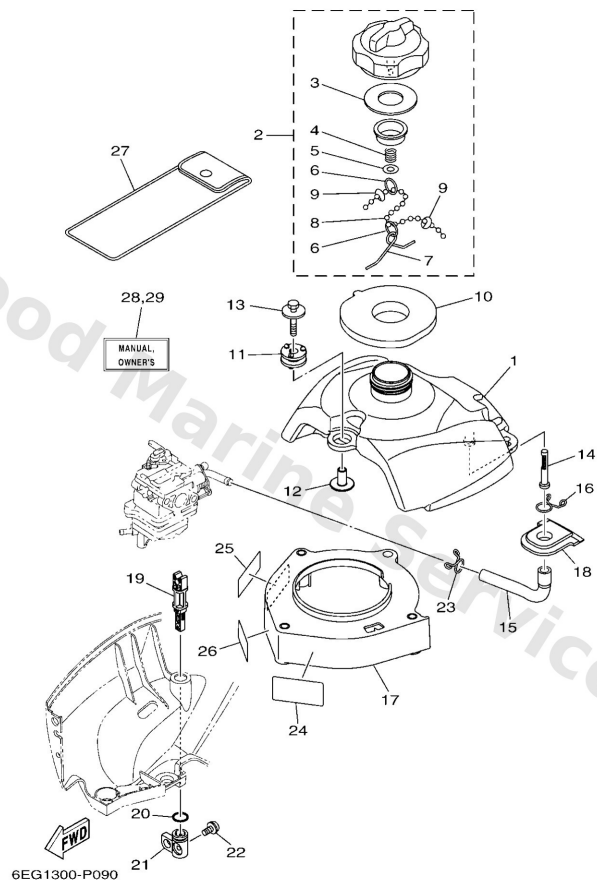


## Cylinder & Crankcase 2



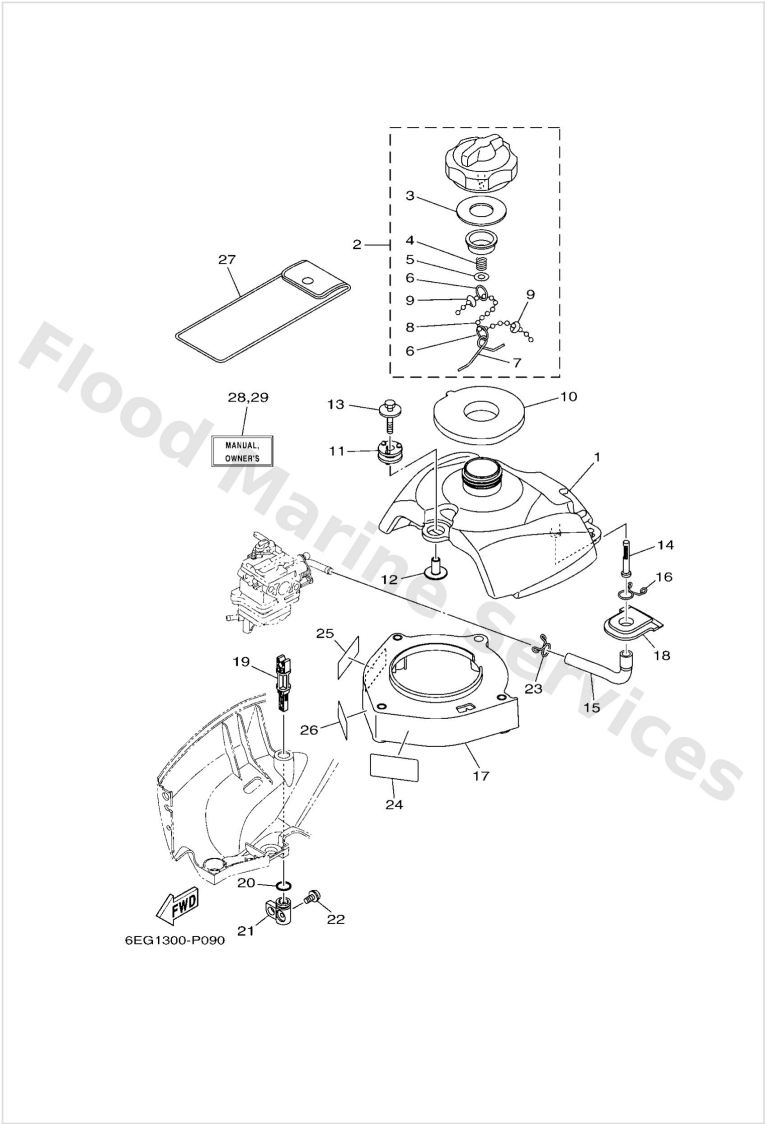
| Ref | Part  |                         |
|-----|---|-------------------------|
| 17  | <a href="#">97D9508014</a><br>Bolt, hexagon deep recess | <a href="#">Buy now</a> |
| 18  | <a href="#">9043008143</a><br>Gasket (256-11198-00)     | <a href="#">Buy now</a> |
| 19  | <a href="#">6EGE310200</a><br>Gear unit assembly        | <a href="#">Buy now</a> |
| 20  | <a href="#">9581706012</a><br>Bolt, flange              | <a href="#">Buy now</a> |
| 21  | <a href="#">6EGE536210</a><br>Plug, oil level           | <a href="#">Buy now</a> |
| 22  | <a href="#">9321024800</a><br>O-ring                    | <a href="#">Buy now</a> |

# Fuel

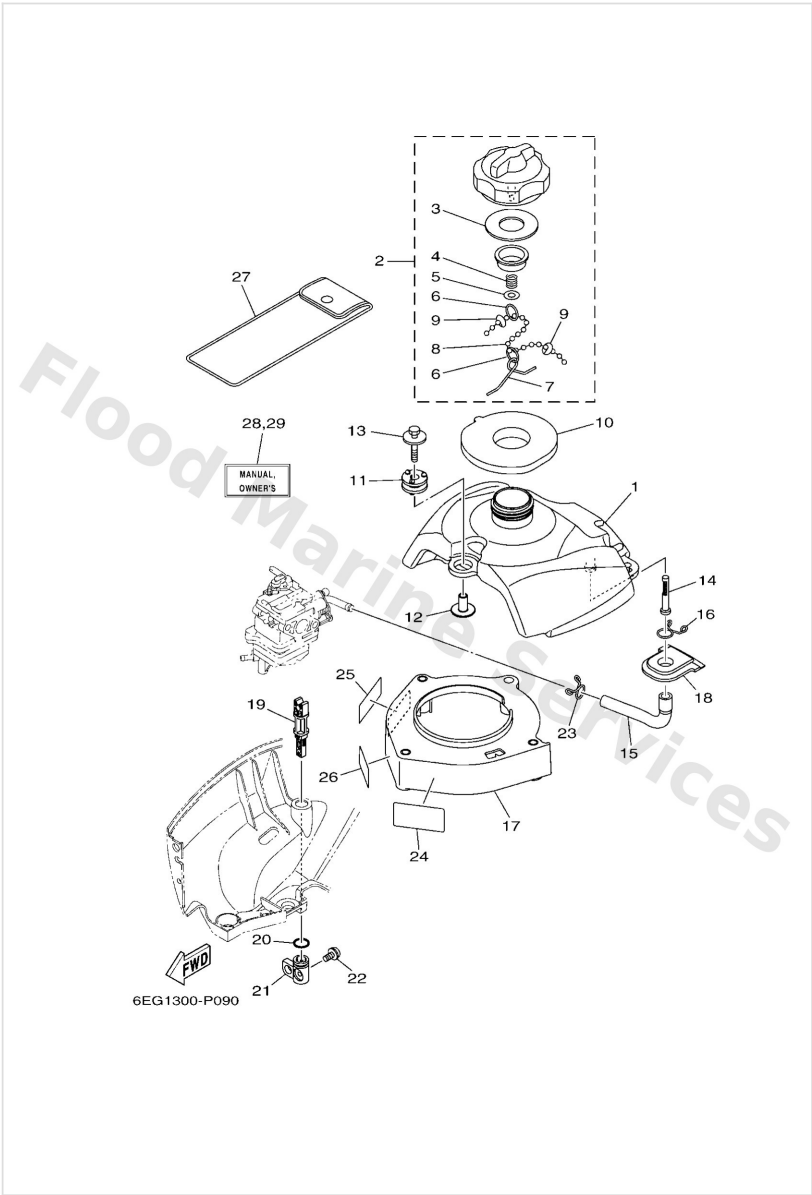


| Ref | Part  |                         |
|-----|---|-------------------------|
| 1   | <a href="#">6EGF411100</a><br>Tank, fuel            | <a href="#">Buy now</a> |
| 2   | <a href="#">68D2461011</a><br>Cap assembly          | <a href="#">Buy now</a> |
| 3   | <a href="#">68D2461201</a><br>Packing, cap          | <a href="#">Buy now</a> |
| 4   | <a href="#">90501100A5</a><br>Spring, compression   | <a href="#">Buy now</a> |
| 5   | <a href="#">9299004200</a><br>Ybs66-4 washer, plain | <a href="#">Buy now</a> |
| 6   | <a href="#">90468100A0</a><br>Clip                  | <a href="#">Buy now</a> |
| 7   | <a href="#">6242463400</a><br>Hook, chain ball      | <a href="#">Buy now</a> |
| 8   | <a href="#">69M2463301</a><br>Chain, ball           | <a href="#">Buy now</a> |
| 9   | <a href="#">67D2175700</a><br>Washer, special 1     | <a href="#">Buy now</a> |
| 10  | <a href="#">6EG2464101</a><br>Gasket, cap 1         | <a href="#">Buy now</a> |
| 11  | <a href="#">6EGF437500</a><br>Grommet               | <a href="#">Buy now</a> |
| 12  | <a href="#">9038706176</a><br>Collar                | <a href="#">Buy now</a> |
| 13  | <a href="#">9011906300</a><br>Bolt, with washer     | <a href="#">Buy now</a> |
| 14  | <a href="#">6L52425100</a><br>Strainer 1            | <a href="#">Buy now</a> |
| 15  | <a href="#">6EGF431101</a><br>Pipe, fuel 1          | <a href="#">Buy now</a> |

Fuel

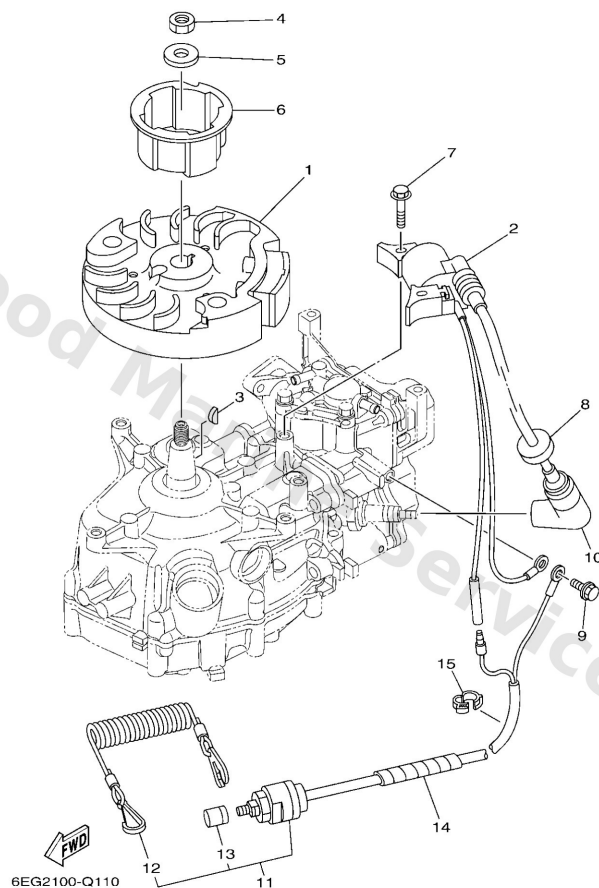


| Ref | Part  |                         |
|-----|---|-------------------------|
| 16  | <a href="#">9046713M13</a><br>Clip(6m6)                   | <a href="#">Buy now</a> |
| 17  | <a href="#">6EGF419100</a><br>Bracket, fuel tank          | <a href="#">Buy now</a> |
| 18  | <a href="#">6EGF418101</a><br>Damper, locating 1          | <a href="#">Buy now</a> |
| 19  | <a href="#">6EGF455400</a><br>Shaft, cock                 | <a href="#">Buy now</a> |
| 20  | <a href="#">93210128F6</a><br>O-ring                      | <a href="#">Buy now</a> |
| 21  | <a href="#">6EGF457500</a><br>Lever, fuel change          | <a href="#">Buy now</a> |
| 22  | <a href="#">9015905M12</a><br>Screw, with washer(6t4)     | <a href="#">Buy now</a> |
| 23  | <a href="#">9046711M08</a><br>Clip(72x)                   | <a href="#">Buy now</a> |
| 24  | <a href="#">6EGE343770</a><br>Mark, caution               | <a href="#">Buy now</a> |
| 25  | <a href="#">6EEH199440</a><br>Label, safety               | <a href="#">Buy now</a> |
| 26  | <a href="#">6EEH199450</a><br>Label, safety               | <a href="#">Buy now</a> |
| 27  | <a href="#">6EEF810000</a><br>Tool kit<br>AP              | <a href="#">Buy now</a> |
| 28  | <a href="#">6EGF819976D0</a><br>Manual,Owner's<br>UR (NL) | <a href="#">Buy now</a> |
| 28  | <a href="#">6EGF819976E0</a><br>Manual,Owner's<br>UR (E)  | <a href="#">Buy now</a> |
| 28  | <a href="#">6EGF819976F0</a><br>Manual,Owner's<br>UR (F)  | <a href="#">Buy now</a> |



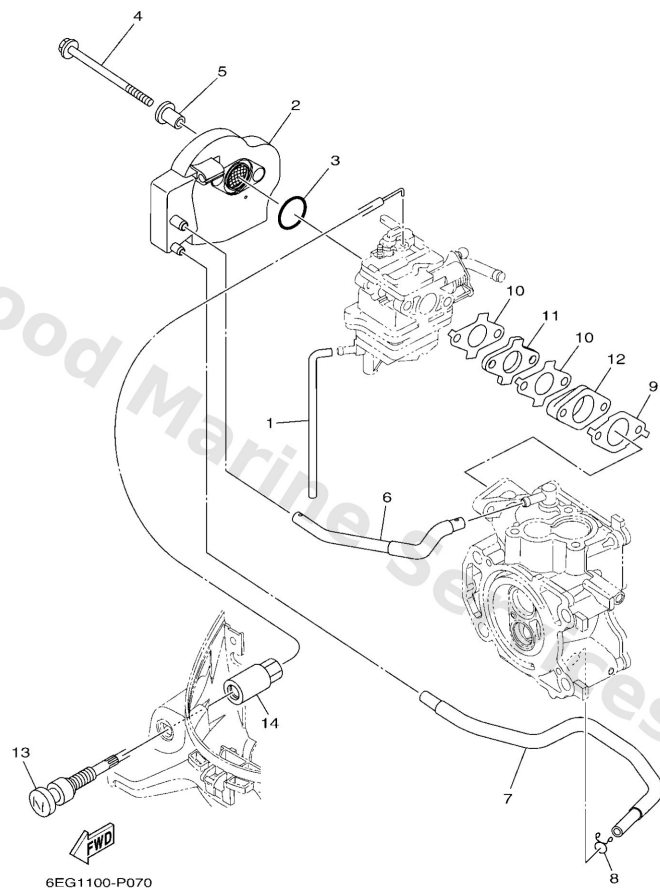
| Ref | Part   |                         |
|-----|--|-------------------------|
| 28  | <a href="#">6EGF819976G0</a><br>Manual, Owner's<br>UR (D)  | <a href="#">Buy now</a> |
| 28  | <a href="#">6EGF819976H0</a><br>Manual, Owner's<br>UR (I)  | <a href="#">Buy now</a> |
| 28  | <a href="#">6EGF819976S0</a><br>Manual, Owner's<br>UR (ES) | <a href="#">Buy now</a> |
| 29  | <a href="#">6EGF819986K0</a><br>Manual, Owner's<br>UR (DK) | <a href="#">Buy now</a> |
| 29  | <a href="#">6EGF819986L0</a><br>Manual, Owner's<br>UR (SF) | <a href="#">Buy now</a> |
| 29  | <a href="#">6EGF819986M0</a><br>Manual, Owner's<br>UR (S)  | <a href="#">Buy now</a> |
| 29  | <a href="#">6EGF819986N0</a><br>Manual, Owner's<br>UR (N)  | <a href="#">Buy now</a> |
| 29  | <a href="#">6EGF819986P0</a><br>Manual, Owner's<br>UR (P)  | <a href="#">Buy now</a> |
| 29  | <a href="#">6EGF819986R0</a><br>Manual, Owner's<br>UR (GR) | <a href="#">Buy now</a> |

# Generator



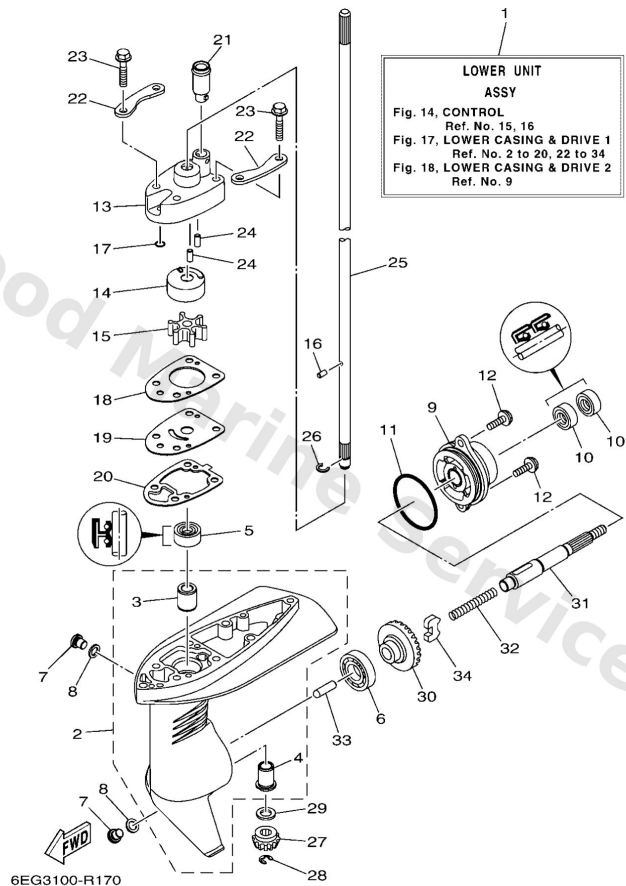
| Ref | Part  |                         |
|-----|---|-------------------------|
| 1   | <a href="#">69M8565000</a><br>Rotor assembly                | <a href="#">Buy now</a> |
| 2   | <a href="#">69M8564000</a><br>T.c.i. unit assembly          | <a href="#">Buy now</a> |
| 3   | <a href="#">9028004M06</a><br>Key, woodruff(6a1)            | <a href="#">Buy now</a> |
| 4   | <a href="#">9017010M33</a><br>Nut(6a1)                      | <a href="#">Buy now</a> |
| 5   | <a href="#">90201105A2</a><br>Washer, plate (4x7)           | <a href="#">Buy now</a> |
| 6   | <a href="#">69M1572300</a><br>Pulley, starter               | <a href="#">Buy now</a> |
| 7   | <a href="#">9010506M24</a><br>Bolt (6g1)                    | <a href="#">Buy now</a> |
| 8   | <a href="#">9048025161</a><br>Grommet(656)                  | <a href="#">Buy now</a> |
| 9   | <a href="#">97E9506512</a><br>Bolt, hexagon w/w deep recess | <a href="#">Buy now</a> |
| 10  | <a href="#">6BX8237000</a><br>Plug cap assembly             | <a href="#">Buy now</a> |
| 11  | <a href="#">65W8257501</a><br>Engine stop switch assembly   | <a href="#">Buy now</a> |
| 12  | <a href="#">6828255600</a><br>Lanyard, stop switch          | <a href="#">Buy now</a> |
| 13  | <a href="#">6898257Y00</a><br>Cap                           | <a href="#">Buy now</a> |
| 14  | <a href="#">9044606M90</a><br>Hose                          | <a href="#">Buy now</a> |
| 15  | <a href="#">9046416003</a><br>Clamp                         | <a href="#">Buy now</a> |

# Intake



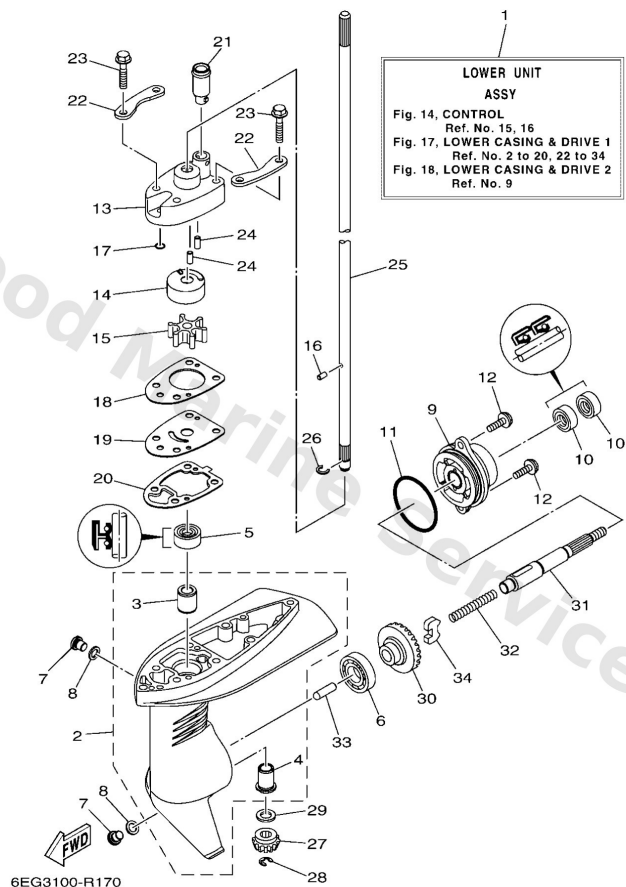
| Ref | Part  |                         |
|-----|---|-------------------------|
| 1   | <a href="#">6EGE414801</a><br>Pipe                          | <a href="#">Buy now</a> |
| 2   | <a href="#">6EG1444000</a><br>Silencer assembly, intake     | <a href="#">Buy now</a> |
| 3   | <a href="#">9321020801</a><br>O-ring                        | <a href="#">Buy now</a> |
| 4   | <a href="#">97E9506585</a><br>Bolt, hexagon w/w deep recess | <a href="#">Buy now</a> |
| 5   | <a href="#">9038706076</a><br>Collar                        | <a href="#">Buy now</a> |
| 6   | <a href="#">6EGE248301</a><br>Pipe 3                        | <a href="#">Buy now</a> |
| 7   | <a href="#">6EGE316F01</a><br>Hose, oil 1                   | <a href="#">Buy now</a> |
| 8   | <a href="#">9046709M09</a><br>Clip(6k8)                     | <a href="#">Buy now</a> |
| 9   | <a href="#">6EGE364500</a><br>Gasket, manifold 1            | <a href="#">Buy now</a> |
| 10  | <a href="#">6EGE364600</a><br>Gasket, manifold 2            | <a href="#">Buy now</a> |
| 11  | <a href="#">6EGE364700</a><br>Gasket, manifold 3            | <a href="#">Buy now</a> |
| 12  | <a href="#">6EGE364101</a><br>Manifold, intake 1            | <a href="#">Buy now</a> |
| 13  | <a href="#">6EGF633000</a><br>Starter cable assembly        | <a href="#">Buy now</a> |
| 14  | <a href="#">9017911800</a><br>Nut                           | <a href="#">Buy now</a> |

# Lower Casing & Drive 1



| Ref | Part  |                         |
|-----|---|-------------------------|
| 1   | <a href="#">6EGG5300018D</a><br>Lower unit assembly<br>S(17.0") | <a href="#">Buy now</a> |
| 1   | <a href="#">6EGG5300118D</a><br>Lower unit assembly<br>L(22.0") | <a href="#">Buy now</a> |
| 2   | <a href="#">6EGG5311008D</a><br>Casing, lower                   | <a href="#">Buy now</a> |
| 3   | <a href="#">6L54531609</a><br>Bushing, d/shaft 1 90380-09m23    | <a href="#">Buy now</a> |
| 4   | <a href="#">6L54531709</a><br>Bushing, d/shaft 2 90381-09m08    | <a href="#">Buy now</a> |
| 5   | <a href="#">9310309800</a><br>Oil seal                          | <a href="#">Buy now</a> |
| 6   | <a href="#">93316003Y0</a><br>Bearing                           | <a href="#">Buy now</a> |
| 7   | <a href="#">9034008002</a><br>Plug, straight screw              | <a href="#">Buy now</a> |
| 8   | <a href="#">9043008003</a><br>Gasket                            | <a href="#">Buy now</a> |
| 9   | <a href="#">6EGG5361008D</a><br>Cap, lower casing               | <a href="#">Buy now</a> |
| 10  | <a href="#">9310113800</a><br>Oil seal                          | <a href="#">Buy now</a> |
| 11  | <a href="#">9321048800</a><br>O-ring                            | <a href="#">Buy now</a> |
| 12  | <a href="#">97E9506516</a><br>Bolt, hexagon w/w deep recess     | <a href="#">Buy now</a> |
| 13  | <a href="#">6EGG431100</a><br>Housing, water pum                | <a href="#">Buy now</a> |
| 14  | <a href="#">6EGG432200</a><br>Insert, cartridge                 | <a href="#">Buy now</a> |

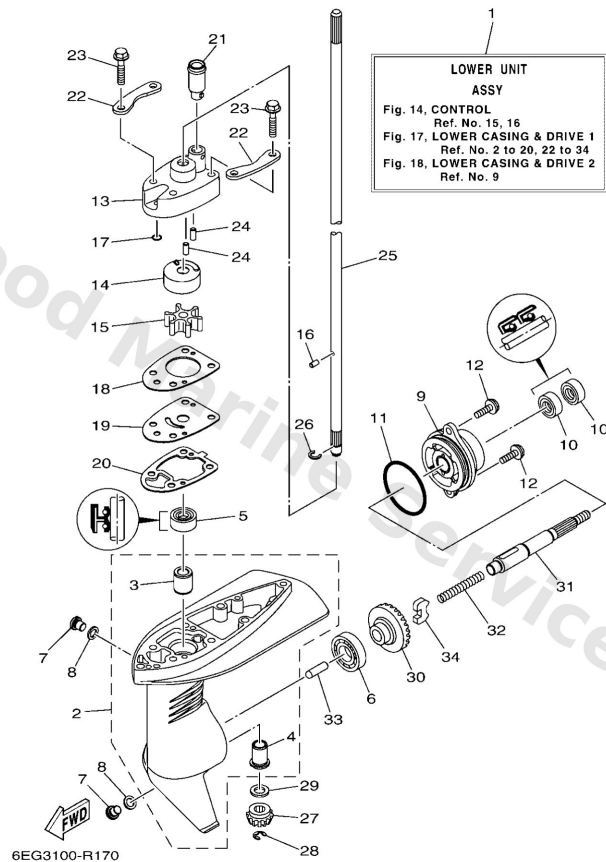
## Lower Casing & Drive 1



| Ref | Part  |                         |
|-----|---|-------------------------|
| 15  | <a href="#">6L54435200</a><br>Impeller                      | <a href="#">Buy now</a> |
| 16  | <a href="#">9360407M13</a><br>Pin, dowel(6I5)               | <a href="#">Buy now</a> |
| 17  | <a href="#">9321005001</a><br>O-ring                        | <a href="#">Buy now</a> |
| 18  | <a href="#">6EGG431500</a><br>Gasket, water pump            | <a href="#">Buy now</a> |
| 19  | <a href="#">6EGG432300</a><br>Outer plate, cartr            | <a href="#">Buy now</a> |
| 20  | <a href="#">6EGG531500</a><br>Packing, lower cas            | <a href="#">Buy now</a> |
| 21  | <a href="#">6EEG436601</a><br>Damper, water seal 2          | <a href="#">Buy now</a> |
| 22  | <a href="#">6EGG432800</a><br>Plate                         | <a href="#">Buy now</a> |
| 23  | <a href="#">97E9506535</a><br>Bolt, hexagon w/w deep recess | <a href="#">Buy now</a> |
| 24  | <a href="#">9360412M07</a><br>Pin, dowel (688)              | <a href="#">Buy now</a> |
| 25  | <a href="#">6EGG551100</a><br>Shaft, drive<br>S(17.0")      | <a href="#">Buy now</a> |
| 25  | <a href="#">6EGG551110</a><br>Shaft, drive<br>L(22.0")      | <a href="#">Buy now</a> |
| 26  | <a href="#">9046707M12</a><br>Clip(6I5)                     | <a href="#">Buy now</a> |
| 27  | <a href="#">6L54555100</a><br>Pinion                        | <a href="#">Buy now</a> |
| 28  | <a href="#">9900106600</a><br>Circlip(53I)                  | <a href="#">Buy now</a> |

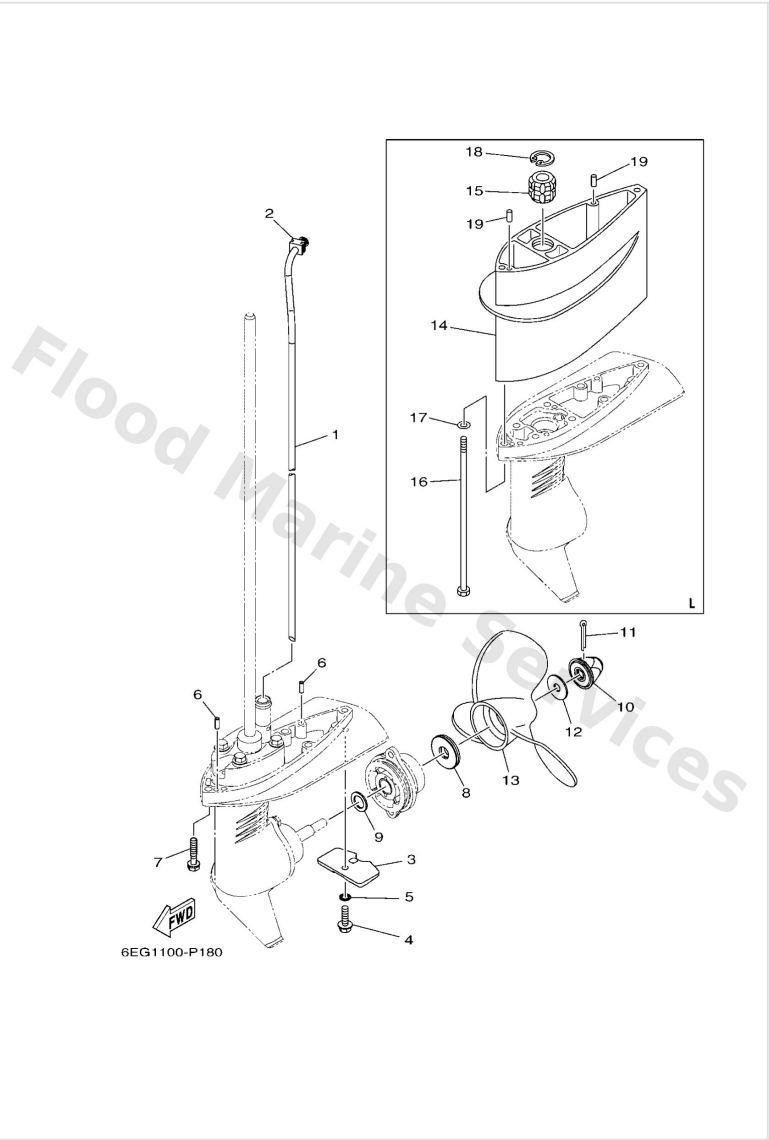


## Lower Casing & Drive 1



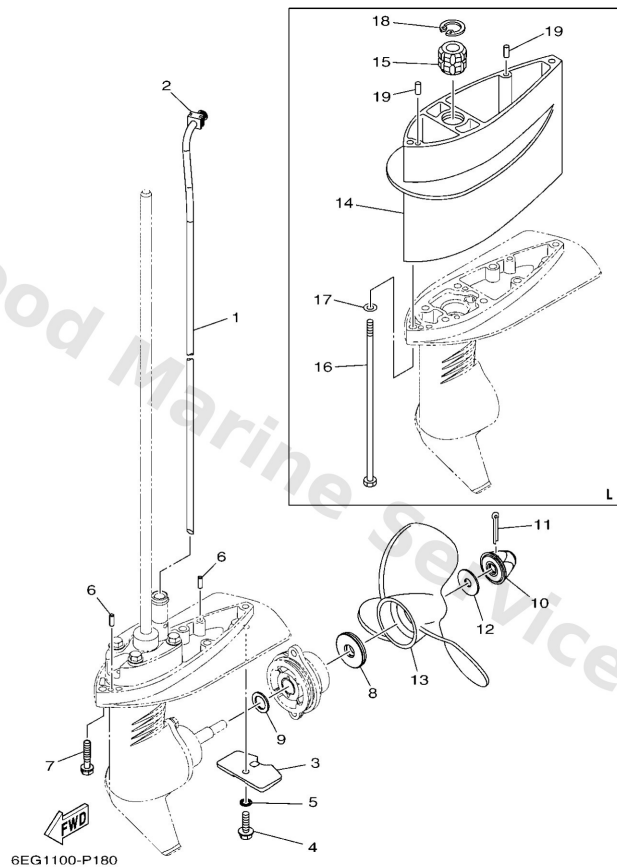
| Ref | Part   |                         |
|-----|--|-------------------------|
| 29  | <a href="#">6EGG553300</a><br>Shim                           | <a href="#">Buy now</a> |
| 30  | <a href="#">6L54556000</a><br>Gear                           | <a href="#">Buy now</a> |
| 31  | <a href="#">6EGG561100</a><br>Shaft, propeller               | <a href="#">Buy now</a> |
| 32  | <a href="#">9050110064</a><br>Spring, compression 6164563600 | <a href="#">Buy now</a> |
| 33  | <a href="#">6EGG563500</a><br>Plunger, shift                 | <a href="#">Buy now</a> |
| 34  | <a href="#">6L54563100</a><br>Clutch, dog                    | <a href="#">Buy now</a> |

# Lower Casing & Drive 2



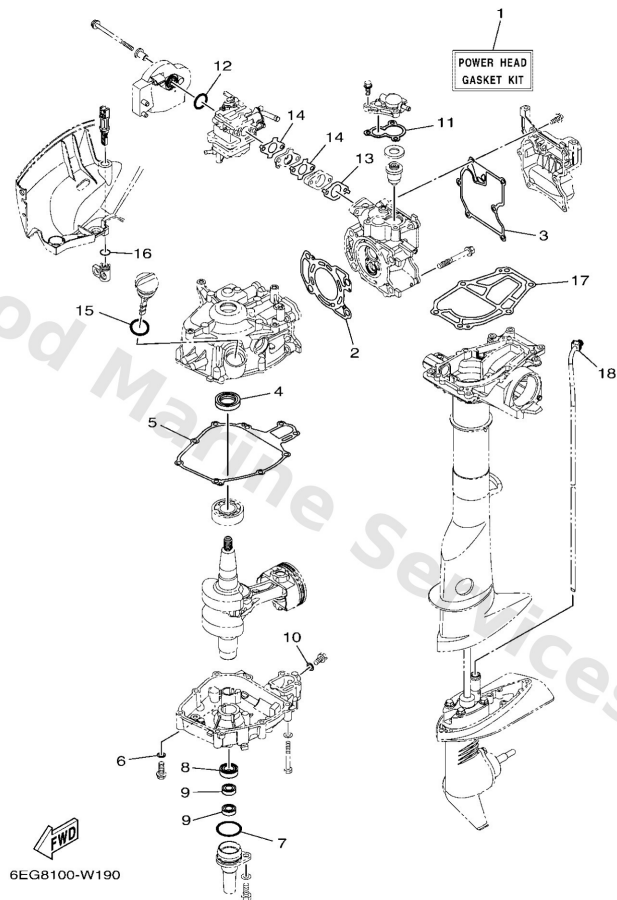
| Ref | Part  |                         |
|-----|---|-------------------------|
| 1   | <a href="#">6EG4436100</a><br>Tube, water 1<br>S(17.0")                 | <a href="#">Buy now</a> |
| 1   | <a href="#">6EG4436110</a><br>Tube, water 1<br>L(22.0")                 | <a href="#">Buy now</a> |
| 2   | <a href="#">6EEG436500</a><br>Damper, water seal                        | <a href="#">Buy now</a> |
| 3   | <a href="#">6L54525103</a><br>Anode                                     | <a href="#">Buy now</a> |
| 4   | <a href="#">95D9506012</a><br>Bolt, flange deep recess                  | <a href="#">Buy now</a> |
| 5   | <a href="#">9299006300</a><br>Washer, tooth                             | <a href="#">Buy now</a> |
| 19  | <a href="#">9360412M07</a><br>Pin, dowel (688)<br>L(22.0")              | <a href="#">Buy now</a> |
| 7   | <a href="#">97E9506530</a><br>Bolt, hexagon w/w deep recess<br>S(17.0") | <a href="#">Buy now</a> |
| 8   | <a href="#">6EEG598700</a><br>Spacer 1                                  | <a href="#">Buy now</a> |
| 9   | <a href="#">9020113198</a><br>Washer 6474556600                         | <a href="#">Buy now</a> |
| 10  | <a href="#">6EEG561600</a><br>Nut, propeller                            | <a href="#">Buy now</a> |
| 11  | <a href="#">9149025030</a><br>Pin, cotter(6I5)                          | <a href="#">Buy now</a> |
| 12  | <a href="#">9020108M54</a><br>Washer, plate (6e5)                       | <a href="#">Buy now</a> |
| 13  | <a href="#">6L54594300</a><br>Propeller (3x7-1/4 x6 -bs)<br>UR          | <a href="#">Buy now</a> |
| 13  | <a href="#">6L54594900</a><br>Propeller (3x7-1/4 x5 -bs)<br>UR          | <a href="#">Buy now</a> |

## Lower Casing & Drive 2



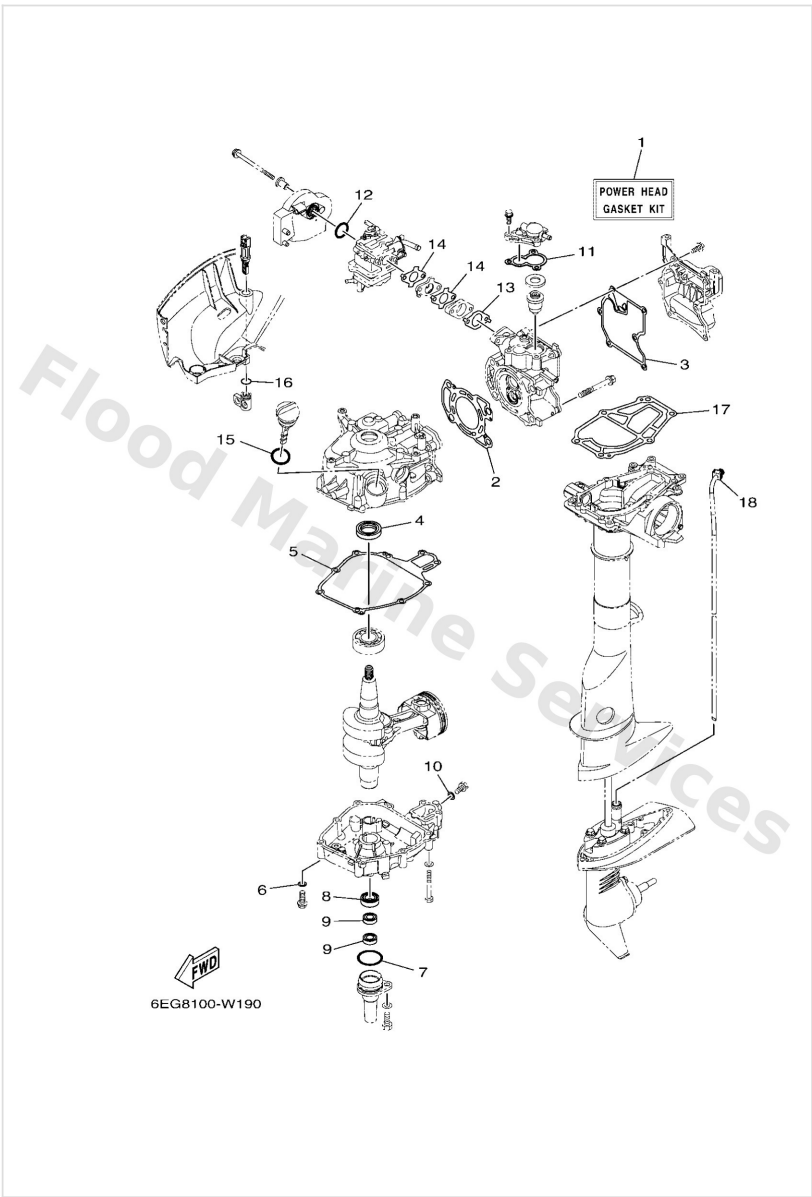
| Ref | Part   |                         |
|-----|--|-------------------------|
| 14  | <a href="#">6EGG5211008D</a><br>Extension<br>L(22.0")          | <a href="#">Buy now</a> |
| 15  | <a href="#">6L54531800</a><br>Bushing, drive shaft<br>L(22.0") | <a href="#">Buy now</a> |
| 16  | <a href="#">9010106M18</a><br>Bolt(6I5)<br>L(22.0")            | <a href="#">Buy now</a> |
| 17  | <a href="#">9299006600</a><br>Washer, plain (646)<br>L(22.0")  | <a href="#">Buy now</a> |
| 18  | <a href="#">9342022M03</a><br>Cir clip (6e0)<br>L(22.0")       | <a href="#">Buy now</a> |

## Repair Kit 1



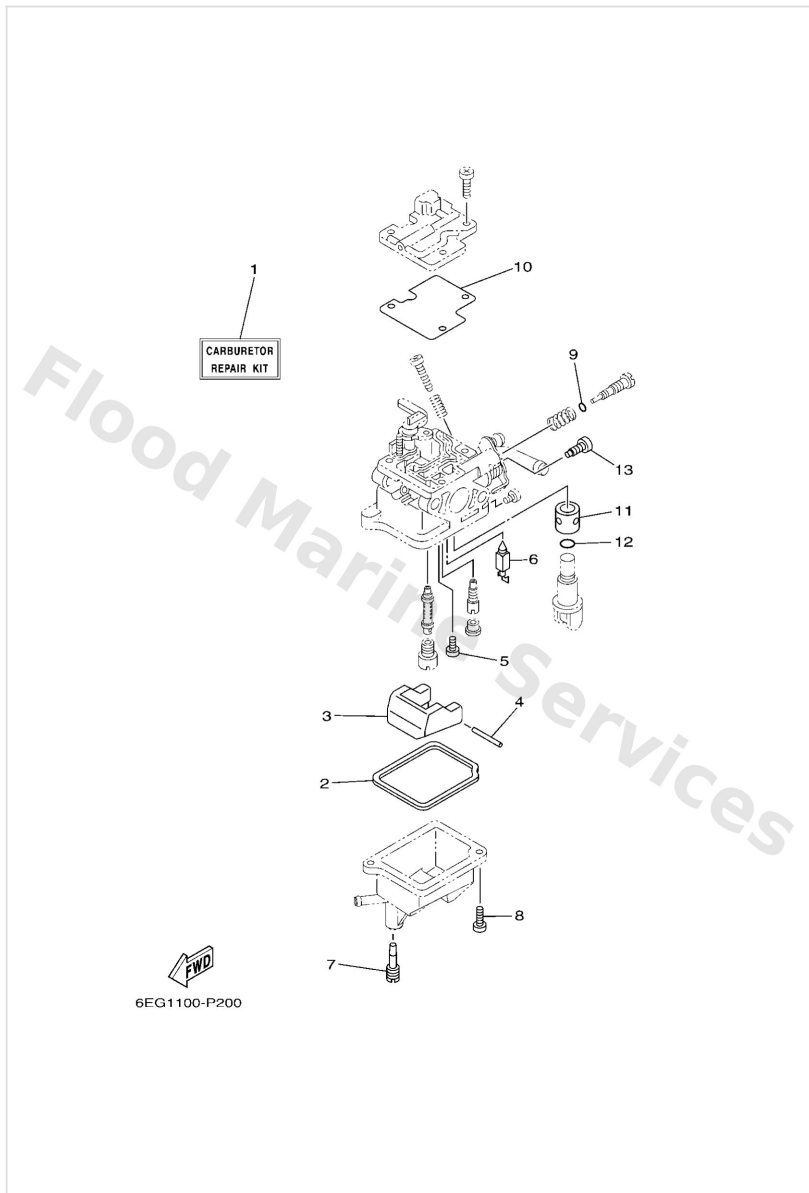
| Ref | Part  |                         |
|-----|---|-------------------------|
| 1   | <a href="#">6EGW000100</a><br>Power head gasket kit | <a href="#">Buy now</a> |
| 2   | <a href="#">6EGE118100</a><br>Gasket, cylinder h    | <a href="#">Buy now</a> |
| 3   | <a href="#">6EGE119300</a><br>Gasket, head cover    | <a href="#">Buy now</a> |
| 4   | <a href="#">9310220814</a><br>Oil seal              | <a href="#">Buy now</a> |
| 5   | <a href="#">6EG1135100</a><br>Gasket, cylinder      | <a href="#">Buy now</a> |
| 6   | <a href="#">9020108818</a><br>Washer                | <a href="#">Buy now</a> |
| 7   | <a href="#">9321035803</a><br>O-ring                | <a href="#">Buy now</a> |
| 9   | <a href="#">9310209800</a><br>Oil seal              | <a href="#">Buy now</a> |
| 10  | <a href="#">9043008143</a><br>Gasket (256-11198-00) | <a href="#">Buy now</a> |
| 11  | <a href="#">67D12414A0</a><br>Gasket, cover         | <a href="#">Buy now</a> |
| 12  | <a href="#">9321020801</a><br>O-ring                | <a href="#">Buy now</a> |
| 13  | <a href="#">6EGE364500</a><br>Gasket, manifold 1    | <a href="#">Buy now</a> |
| 14  | <a href="#">6EGE364600</a><br>Gasket, manifold 2    | <a href="#">Buy now</a> |
| 15  | <a href="#">9321024800</a><br>O-ring                | <a href="#">Buy now</a> |
| 16  | <a href="#">93210128F6</a><br>O-ring                | <a href="#">Buy now</a> |

# Repair Kit 1



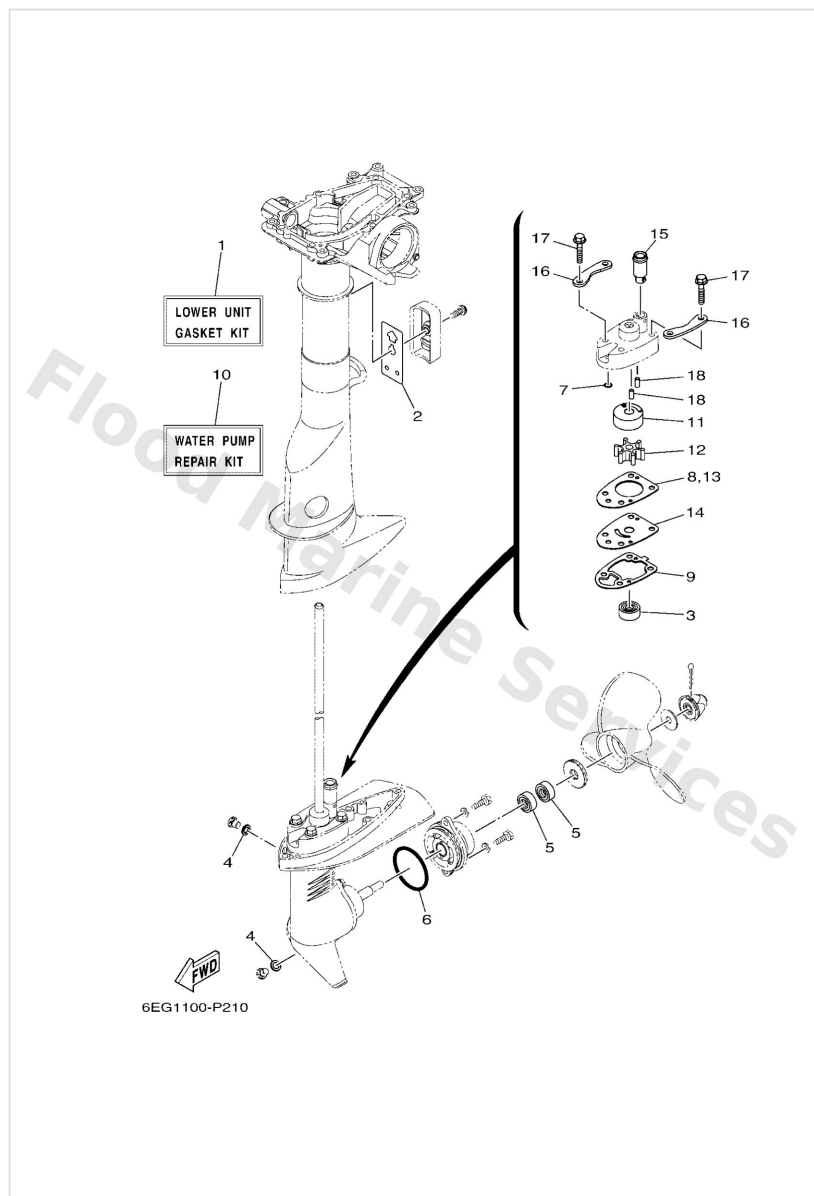
| Ref | Part   |                         |
|-----|--|-------------------------|
| 17  | <a href="#">6EGG511300</a><br>Gasket, upper casi | <a href="#">Buy now</a> |
| 18  | <a href="#">6EEG436500</a><br>Damper, water seal | <a href="#">Buy now</a> |

## Repair Kit 2



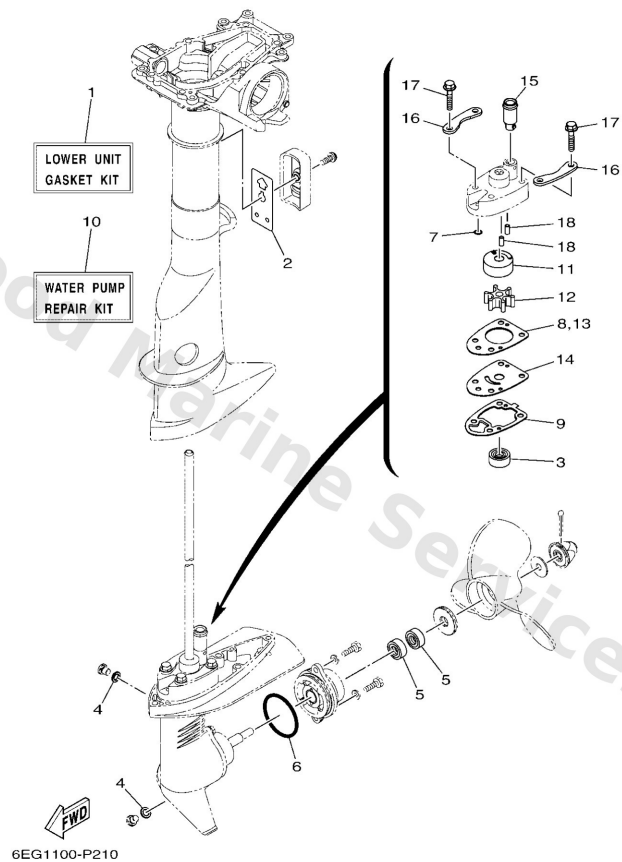
| Ref | Part  |                         |
|-----|---|-------------------------|
| 1   | <a href="#">69MW009301</a><br>Carburetor repair kit | <a href="#">Buy now</a> |
| 2   | <a href="#">69M1498401</a><br>Gasket, float chamber | <a href="#">Buy now</a> |
| 3   | <a href="#">69M1438500</a><br>Float                 | <a href="#">Buy now</a> |
| 4   | <a href="#">6A11438600</a><br>Pin, float            | <a href="#">Buy now</a> |
| 5   | <a href="#">9858003005</a><br>Screw, pan head(78g)  | <a href="#">Buy now</a> |
| 6   | <a href="#">62Y1439200</a><br>Valve, needle         | <a href="#">Buy now</a> |
| 7   | <a href="#">69M1499100</a><br>Screw                 | <a href="#">Buy now</a> |
| 8   | <a href="#">9858004010</a><br>Screw, pan head (e56) | <a href="#">Buy now</a> |
| 9   | <a href="#">2T41439701</a><br>O-ring                | <a href="#">Buy now</a> |
| 10  | <a href="#">69M1453601</a><br>Gasket                | <a href="#">Buy now</a> |
| 11  | <a href="#">69M2452300</a><br>Valve                 | <a href="#">Buy now</a> |
| 12  | <a href="#">69M2453300</a><br>O-ring                | <a href="#">Buy now</a> |
| 13  | <a href="#">69M2453500</a><br>Screw, lever fitting  | <a href="#">Buy now</a> |

## Repair Kit 3



| Ref | Part  |                         |
|-----|---|-------------------------|
| 1   | <a href="#">6EGW000120</a><br>Lower unit gasket kit | <a href="#">Buy now</a> |
| 2   | <a href="#">6EGG511500</a><br>Gasket, upper casi    | <a href="#">Buy now</a> |
| 3   | <a href="#">9310309800</a><br>Oil seal              | <a href="#">Buy now</a> |
| 4   | <a href="#">9043008003</a><br>Gasket                | <a href="#">Buy now</a> |
| 5   | <a href="#">9310113800</a><br>Oil seal              | <a href="#">Buy now</a> |
| 6   | <a href="#">9321048800</a><br>O-ring                | <a href="#">Buy now</a> |
| 7   | <a href="#">9321005001</a><br>O-ring                | <a href="#">Buy now</a> |
| 8   | <a href="#">6EGG431500</a><br>Gasket, water pump    | <a href="#">Buy now</a> |
| 9   | <a href="#">6EGG531500</a><br>Packing, lower cas    | <a href="#">Buy now</a> |
| 10  | <a href="#">6EGW007802</a><br>Water pump repair kit | <a href="#">Buy now</a> |
| 11  | <a href="#">6EGG432200</a><br>Insert, cartridge     | <a href="#">Buy now</a> |
| 12  | <a href="#">6L54435200</a><br>Impeller              | <a href="#">Buy now</a> |
| 14  | <a href="#">6EGG432300</a><br>Outer plate, cartr    | <a href="#">Buy now</a> |
| 15  | <a href="#">6EEG436601</a><br>Damper, water seal 2  | <a href="#">Buy now</a> |
| 16  | <a href="#">6EGG432800</a><br>Plate                 | <a href="#">Buy now</a> |

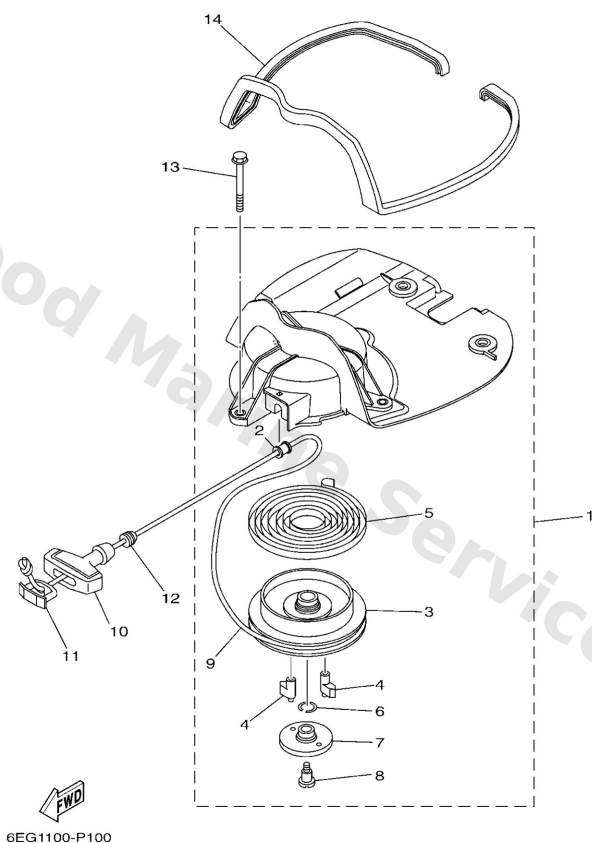
## Repair Kit 3



| Ref | Part  |                         |
|-----|---|-------------------------|
| 17  | <a href="#">97E9506535</a><br>Bolt, hexagon w/w deep recess | <a href="#">Buy now</a> |
| 18  | <a href="#">9360412M07</a><br>Pin, dowel (688)              | <a href="#">Buy now</a> |

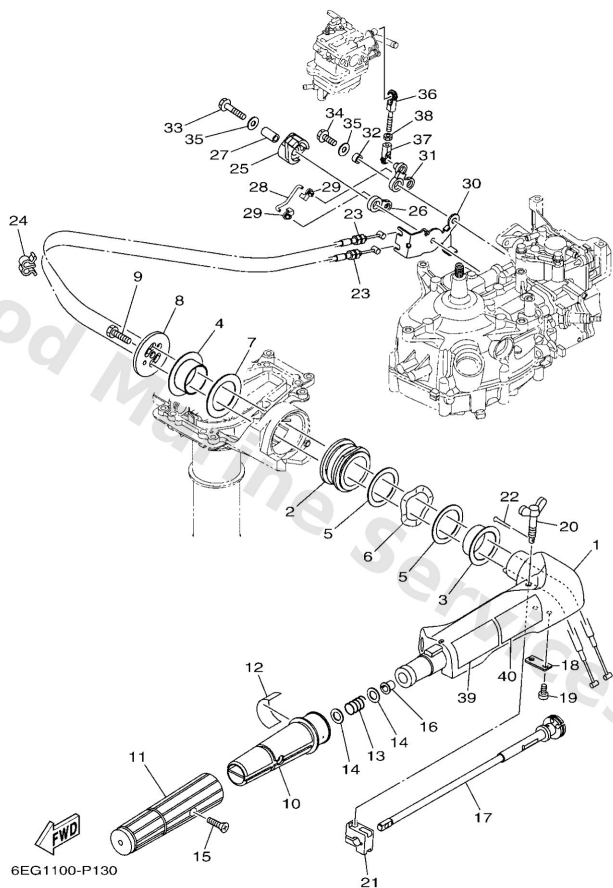


# Starter



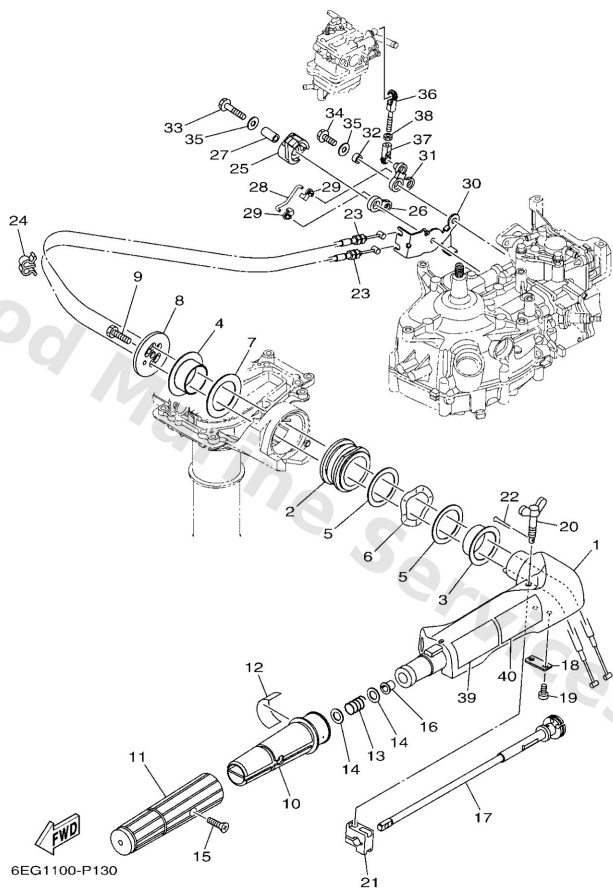
| Ref | Part  |                         |
|-----|---|-------------------------|
| 1   | <a href="#">6EGE571000</a><br>Starter assembly              | <a href="#">Buy now</a> |
| 2   | <a href="#">63V1576400</a><br>Collar 1                      | <a href="#">Buy now</a> |
| 3   | <a href="#">69ME571400</a><br>Drum, sheave                  | <a href="#">Buy now</a> |
| 4   | <a href="#">69M1574100</a><br>Pawl, drive                   | <a href="#">Buy now</a> |
| 5   | <a href="#">67D1571300</a><br>Spring, starter               | <a href="#">Buy now</a> |
| 6   | <a href="#">6BX1570500</a><br>Spring, drive pawl            | <a href="#">Buy now</a> |
| 7   | <a href="#">69M1573500</a><br>Guide, cam                    | <a href="#">Buy now</a> |
| 8   | <a href="#">69M1579300</a><br>Screw                         | <a href="#">Buy now</a> |
| 9   | <a href="#">6EGE575100</a><br>Wire, starter (l:1            | <a href="#">Buy now</a> |
| 10  | <a href="#">6G11575500</a><br>Handle, starter               | <a href="#">Buy now</a> |
| 11  | <a href="#">6G11577900</a><br>Cover                         | <a href="#">Buy now</a> |
| 12  | <a href="#">6EGE578900</a><br>Damper                        | <a href="#">Buy now</a> |
| 13  | <a href="#">97E9506560</a><br>Bolt, hexagon w/w deep recess | <a href="#">Buy now</a> |
| 14  | <a href="#">6EGF418200</a><br>Damper, locating 2            | <a href="#">Buy now</a> |

# Steering



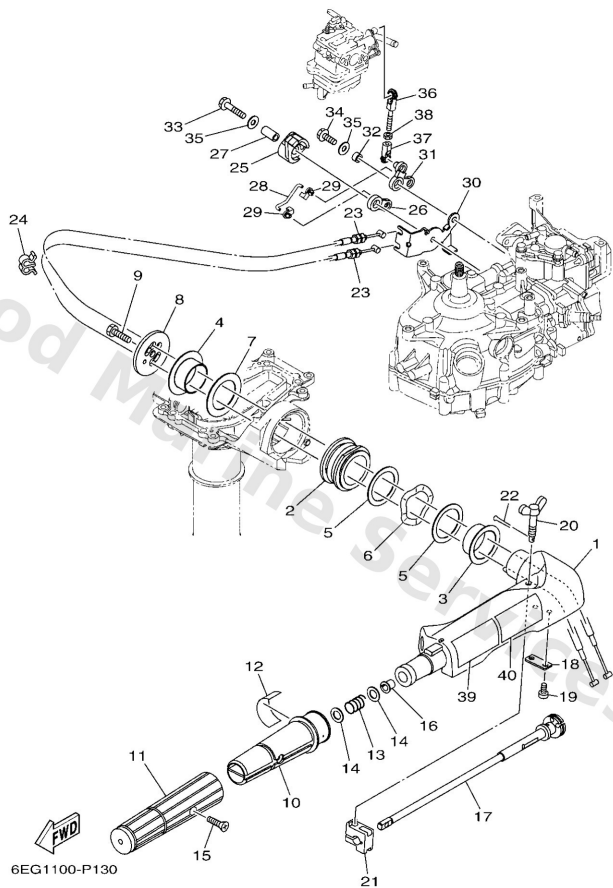
| Ref | Part  |                         |
|-----|---|-------------------------|
| 1   | <a href="#">6EGG2111008D</a><br>Handle, steering        | <a href="#">Buy now</a> |
| 2   | <a href="#">6BX4212900</a><br>Bushing, rubber           | <a href="#">Buy now</a> |
| 3   | <a href="#">6EEG217100</a><br>Bushing                   | <a href="#">Buy now</a> |
| 4   | <a href="#">6EEG217200</a><br>Bushing 2                 | <a href="#">Buy now</a> |
| 5   | <a href="#">6EEG218100</a><br>Washer                    | <a href="#">Buy now</a> |
| 6   | <a href="#">6EEG218800</a><br>Washer, wave              | <a href="#">Buy now</a> |
| 7   | <a href="#">6EEG218200</a><br>Washer 2                  | <a href="#">Buy now</a> |
| 8   | <a href="#">6EEG213100</a><br>Cover, handle stee        | <a href="#">Buy now</a> |
| 9   | <a href="#">97D7508025</a><br>Bolt, hexagon deep recess | <a href="#">Buy now</a> |
| 10  | <a href="#">6EGG211900</a><br>Grip, steering han        | <a href="#">Buy now</a> |
| 11  | <a href="#">6EGG217701</a><br>Rubber, handle            | <a href="#">Buy now</a> |
| 12  | <a href="#">6EGG213700</a><br>Indicator, throttl        | <a href="#">Buy now</a> |
| 13  | <a href="#">9050123215</a><br>Spring (655)              | <a href="#">Buy now</a> |
| 14  | <a href="#">9020110M02</a><br>Washer, plate(6g9)        | <a href="#">Buy now</a> |
| 15  | <a href="#">9015205011</a><br>Screw, countersunk        | <a href="#">Buy now</a> |

# Steering



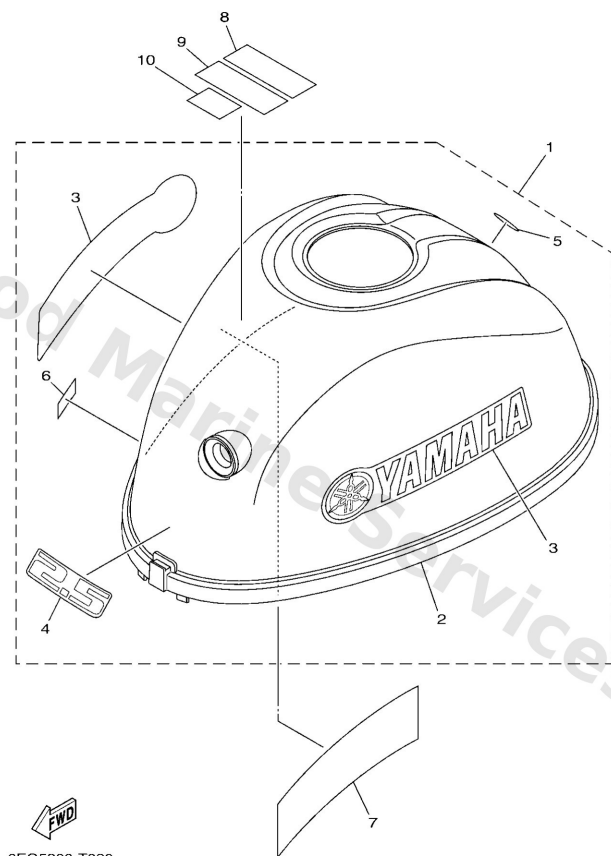
| Ref | Part   |                         |
|-----|--|-------------------------|
| 16  | <a href="#">9038608032</a><br>Bushing (650)            | <a href="#">Buy now</a> |
| 17  | <a href="#">6EGG213800</a><br>Lever, throttle          | <a href="#">Buy now</a> |
| 18  | <a href="#">6EEG215900</a><br>Stay                     | <a href="#">Buy now</a> |
| 19  | <a href="#">9788505012</a><br>Screw,pan head (646)     | <a href="#">Buy now</a> |
| 20  | <a href="#">6G14212501</a><br>Bolt, friction adjusting | <a href="#">Buy now</a> |
| 21  | <a href="#">6EEG212600</a><br>Friction, steering       | <a href="#">Buy now</a> |
| 22  | <a href="#">9149016010</a><br>Pin, cotter              | <a href="#">Buy now</a> |
| 23  | <a href="#">6EGF630100</a><br>Throttle cable ass       | <a href="#">Buy now</a> |
| 24  | <a href="#">9046407M20</a><br>Clamp(6h0)               | <a href="#">Buy now</a> |
| 25  | <a href="#">6EEG163800</a><br>Pulley                   | <a href="#">Buy now</a> |
| 26  | <a href="#">6EGG128300</a><br>Lever, free accel.       | <a href="#">Buy now</a> |
| 27  | <a href="#">9038706252</a><br>Collar                   | <a href="#">Buy now</a> |
| 28  | <a href="#">6EGG121100</a><br>Link, accel.             | <a href="#">Buy now</a> |
| 29  | <a href="#">6614126202</a><br>Joint, choke lever       | <a href="#">Buy now</a> |
| 30  | <a href="#">6EGE449700</a><br>Stay, throttle wir       | <a href="#">Buy now</a> |

# Steering



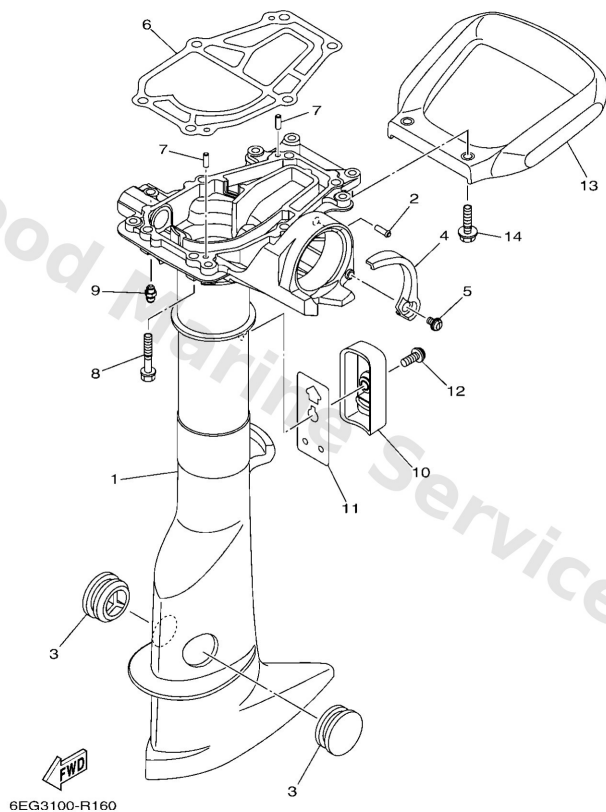
| Ref | Part  |                         |
|-----|---|-------------------------|
| 31  | <a href="#">6EGG128400</a><br>Lever, free axle 2            | <a href="#">Buy now</a> |
| 32  | <a href="#">9038706M24</a><br>Collar(6r8)                   | <a href="#">Buy now</a> |
| 33  | <a href="#">97E9506535</a><br>Bolt, hexagon w/w deep recess | <a href="#">Buy now</a> |
| 34  | <a href="#">97E9506520</a><br>Bolt, hexagon w/w deep recess | <a href="#">Buy now</a> |
| 35  | <a href="#">9020106M62</a><br>Washer, plate (6e5)           | <a href="#">Buy now</a> |
| 36  | <a href="#">6824123750</a><br>Joint, link 2                 | <a href="#">Buy now</a> |
| 37  | <a href="#">6H14123700</a><br>Joint, link                   | <a href="#">Buy now</a> |
| 38  | <a href="#">9538005600</a><br>Nut, hexagon (663)            | <a href="#">Buy now</a> |
| 39  | <a href="#">6EFG279440</a><br>Label, warning (ge            | <a href="#">Buy now</a> |
| 40  | <a href="#">6EFG279450</a><br>Label, warning (ge            | <a href="#">Buy now</a> |

## Top Cowling



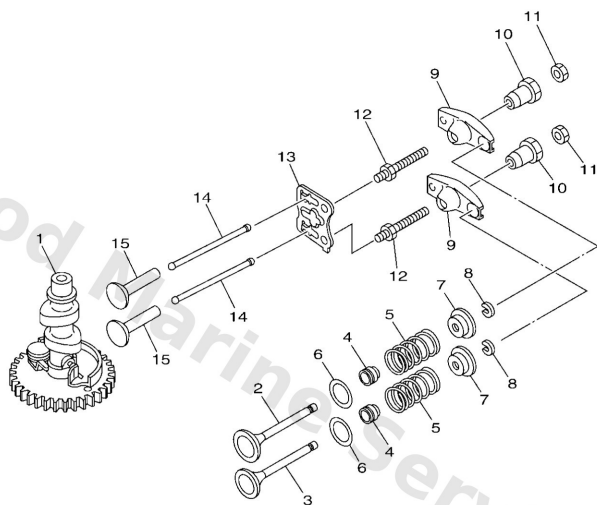
| Ref | Part  |                         |
|-----|---|-------------------------|
| 1   | <a href="#">6EGG261001</a><br>Top cowling assembly          | <a href="#">Buy now</a> |
| 2   | <a href="#">6EGG261A01</a><br>Top cowling w/o gr            | <a href="#">Buy now</a> |
| 3   | <a href="#">6EGG267500</a><br>Graphic, side 1               | <a href="#">Buy now</a> |
| 4   | <a href="#">6EGG267700</a><br>Graphic, front                | <a href="#">Buy now</a> |
| 5   | <a href="#">6EGG269700</a><br>Tuning fork mark              | <a href="#">Buy now</a> |
| 6   | <a href="#">6EGG419100</a><br>Indicator, shift              | <a href="#">Buy now</a> |
| 7   | <a href="#">6EGE442760</a><br>Label, instruction            | <a href="#">Buy now</a> |
| 8   | <a href="#">6EEG269840</a><br>Label, warning (fu            | <a href="#">Buy now</a> |
| 9   | <a href="#">6EEG269850</a><br>Label, warning (fu            | <a href="#">Buy now</a> |
| 10  | <a href="#">BB8F817K30</a><br>Label, fuel<br>EXCEPT FOR RUS | <a href="#">Buy now</a> |

## Upper Casing



| Ref | Part  |                         |
|-----|---|-------------------------|
| 1   | <a href="#">6EGG5111008D</a><br>Casing, upper               | <a href="#">Buy now</a> |
| 2   | <a href="#">6EEF437700</a><br>Pipe, joint 2                 | <a href="#">Buy now</a> |
| 3   | <a href="#">6474515102</a><br>Cover, upper casing           | <a href="#">Buy now</a> |
| 4   | <a href="#">6EGG515200</a><br>Cover, upper casin            | <a href="#">Buy now</a> |
| 5   | <a href="#">9015905M12</a><br>Screw, with washer(6t4)       | <a href="#">Buy now</a> |
| 6   | <a href="#">6EGG511300</a><br>Gasket, upper casi            | <a href="#">Buy now</a> |
| 7   | <a href="#">9360412M07</a><br>Pin, dowel (688)              | <a href="#">Buy now</a> |
| 8   | <a href="#">97E7506535</a><br>Bolt, hexagon w/w deep recess | <a href="#">Buy now</a> |
| 9   | <a href="#">9370006M03</a><br>Nipple, grease(6a1)           | <a href="#">Buy now</a> |
| 10  | <a href="#">6EGG515100</a><br>Cover, upper casin            | <a href="#">Buy now</a> |
| 11  | <a href="#">6EGG511500</a><br>Gasket, upper casi            | <a href="#">Buy now</a> |
| 12  | <a href="#">9015906M11</a><br>Screw, with washer(6l2)       | <a href="#">Buy now</a> |
| 13  | <a href="#">6EGG273100</a><br>Carrying handle               | <a href="#">Buy now</a> |
| 14  | <a href="#">97E9506525</a><br>Bolt, hexagon w/w deep recess | <a href="#">Buy now</a> |

# Valve



  
6EG1100-P060

| Ref | Part   |                         |
|-----|--|-------------------------|
| 1   | <a href="#">6EGE217000</a><br>Camshaft assembly 1    | <a href="#">Buy now</a> |
| 2   | <a href="#">6EG1211110</a><br>Valve, intake          | <a href="#">Buy now</a> |
| 3   | <a href="#">6EGE212111</a><br>Valve, exhaust         | <a href="#">Buy now</a> |
| 4   | <a href="#">6EEE211900</a><br>Seal, valve stem       | <a href="#">Buy now</a> |
| 5   | <a href="#">6EGE211300</a><br>Spring, valve inner    | <a href="#">Buy now</a> |
| 6   | <a href="#">90201168G9</a><br>Washer, plate          | <a href="#">Buy now</a> |
| 7   | <a href="#">7NJ1211700</a><br>Retainer, valve spring | <a href="#">Buy now</a> |
| 8   | <a href="#">7NJ1211800</a><br>Cotter, valve          | <a href="#">Buy now</a> |
| 9   | <a href="#">67D1215100</a><br>Arm, valve rocker      | <a href="#">Buy now</a> |
| 10  | <a href="#">6EEE216500</a><br>Pivot, rocker arm      | <a href="#">Buy now</a> |
| 11  | <a href="#">6EEE215800</a><br>Nut, lock              | <a href="#">Buy now</a> |
| 12  | <a href="#">67D1215700</a><br>Bolt                   | <a href="#">Buy now</a> |
| 13  | <a href="#">6EGE215500</a><br>Guide, push rod        | <a href="#">Buy now</a> |
| 14  | <a href="#">6EGE215400</a><br>Rod, valve push        | <a href="#">Buy now</a> |
| 15  | <a href="#">6EEE215300</a><br>Lifter, valve          | <a href="#">Buy now</a> |

# Disclaimer

This document is provided for convenience only. It is **not** an official Yamaha publication and is **not supplied, endorsed, or approved** by Yamaha Motor Co., Ltd.

Reasonable efforts are made to keep information accurate; however diagrams, part references, supersessions, descriptions, and applicability may contain errors or omissions. Specifications and part availability may change without notice.

You are responsible for confirming the correct parts for your engine (including model code, year, serial range, and any superseded part numbers) before ordering or fitting.