



# Yamaha Helm Master EX 2020

## Parts Manual

[www.floodmarine.co.uk](http://www.floodmarine.co.uk)

+44 2882 246 539

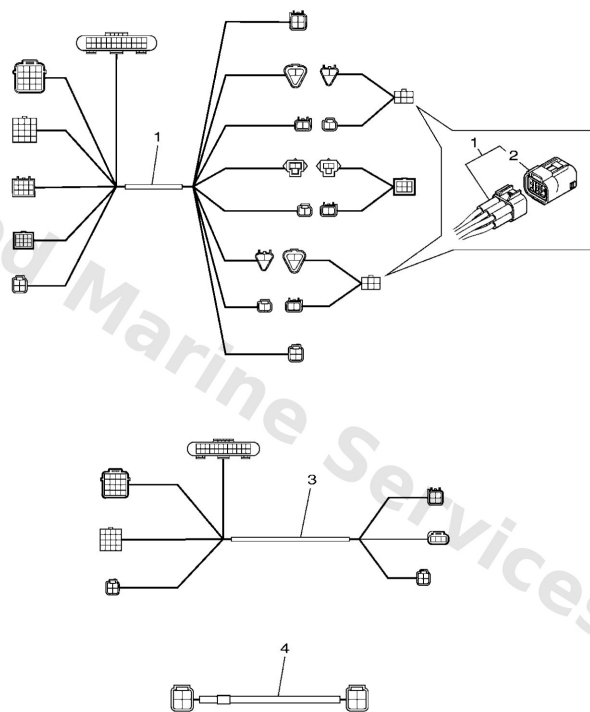
Authorised Yamaha Dealers



# Contents

<b>2ND HELM HARNESS</b>	3
<b>CL5 DISPLAY</b>	4
<b>CONVERSION HARNESS</b>	5
<b>DEC 1 (SINGLE)</b>	6
<b>DEC 2 (MULTIPLE)</b>	7
<b>DEC 3 (SINGLE/MAIN ST)</b>	8
<b>DEC 4 (TWIN/MAIN ST)</b>	9
<b>DEC 5 (TRIPLE/MAIN ST)</b>	10
<b>DEC 6 (QUAD/MAIN ST)</b>	11
<b>DEC 7 (SINGLE/2ND ST)</b>	12
<b>DEC 8 (MULTIPLE/2ND ST)</b>	13
<b>DES 1</b>	14
<b>DES 2</b>	15
<b>IMMOBILIZER KIT</b>	17
<b>JOYSTICK AND AUTOPILOT</b>	18
<b>MFD INTERFACE</b>	20
<b>SWITCH &amp; PANEL 1 (EKS, SINGLE)</b>	21
<b>SWITCH &amp; PANEL 2 (EKS, TWIN)</b>	22
<b>SWITCH &amp; PANEL 3 (EKS, TRIPLE)</b>	24
<b>SWITCH &amp; PANEL 4 (EKS, QUAD)</b>	26
<b>SWITCH &amp; PANEL 5 (EKS,KEY/REC)</b>	28
<b>SWITCH &amp; PANEL 6</b>	29

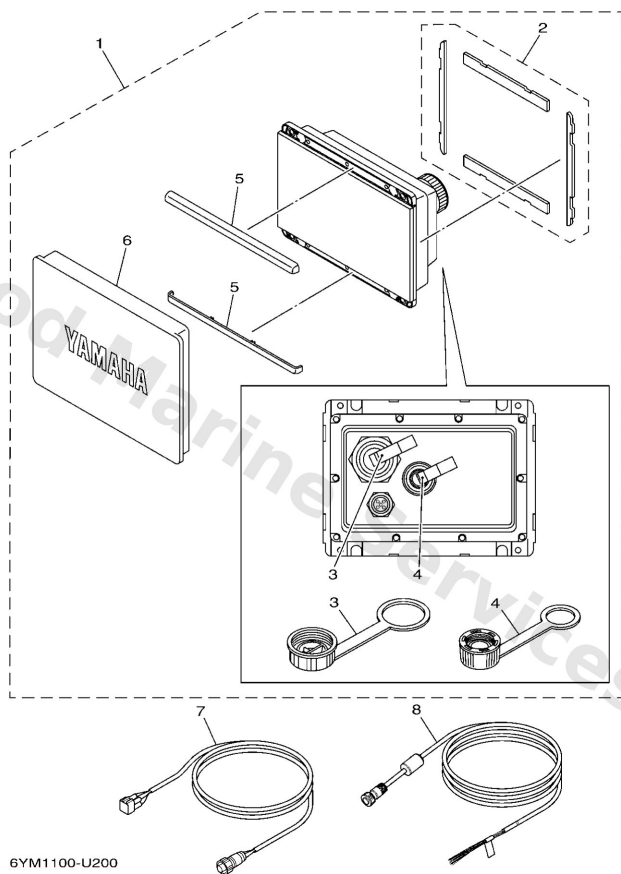
## 2Nd Helm Harness



6X91100-U160

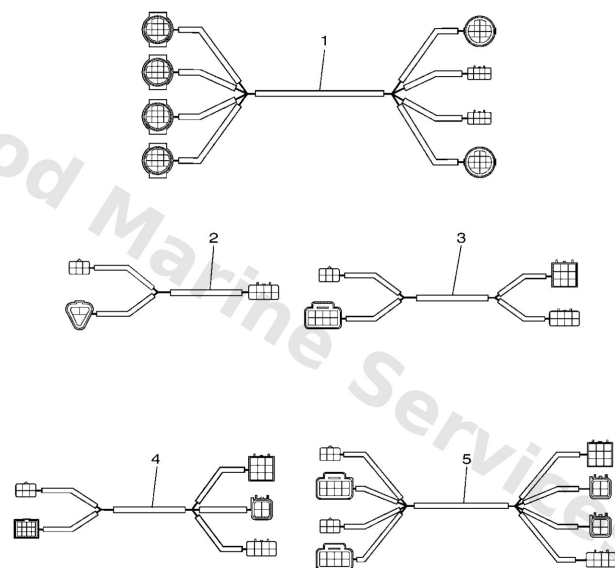
Ref	Part	
1	<a href="#">6X98258A00</a> 2nd st harness (p) 5m-16ft UR	<a href="#">Buy now</a>
1	<a href="#">6X98258A10</a> 2nd st harness (p) 8m-26ft UR	<a href="#">Buy now</a>
1	<a href="#">6X98258A20</a> 2nd st harness (p) 12m-38ft UR	<a href="#">Buy now</a>
2	<a href="#">6Y88537101</a> End of line resister	<a href="#">Buy now</a>
3	<a href="#">6X98258A30</a> 2nd st harness (s) 5m-16ft UR EXCEPT SINGLE ENGINE	<a href="#">Buy now</a>
3	<a href="#">6X98258A40</a> 2nd st harness (s) 8m-26ft UR EXCEPT SINGLE ENGINE	<a href="#">Buy now</a>
3	<a href="#">6X98258A50</a> 2nd st harness (s) 12m-38ft UR EXCEPT SINGLE ENGINE	<a href="#">Buy now</a>
4	<a href="#">6X98258A60</a> 2nd st harness (c) 5m-16ft UR TRIPLE/QUAD ENGINE	<a href="#">Buy now</a>
4	<a href="#">6X98258A70</a> 2nd st harness (c) 8m-26ft UR TRIPLE/QUAD ENGINE	<a href="#">Buy now</a>
4	<a href="#">6X98258A80</a> 2nd st harness (c) 12m-38ft UR TRIPLE/QUAD ENGINE	<a href="#">Buy now</a>

## CI5 Display



Ref	Part	
1	<a href="#">6YM8371010</a> CI5 display(with wi-fi) WITHOUT Wi-Fi	<a href="#">Buy now</a>
2	<a href="#">6YM2248000</a> Seal assembly	<a href="#">Buy now</a>
3	<a href="#">6YM8395600</a> Cap 1	<a href="#">Buy now</a>
4	<a href="#">6YD8395700</a> Cap 2	<a href="#">Buy now</a>
5	<a href="#">6YM8351200</a> Ring, speed meter	<a href="#">Buy now</a>
6	<a href="#">6YM8727800</a> Cover, meter	<a href="#">Buy now</a>
7	<a href="#">6YM8355300</a> Conversion harness ci5-pigtail	<a href="#">Buy now</a>
8	<a href="#">6YD8356N00</a> Wire, lead	<a href="#">Buy now</a>

# Conversion Harness

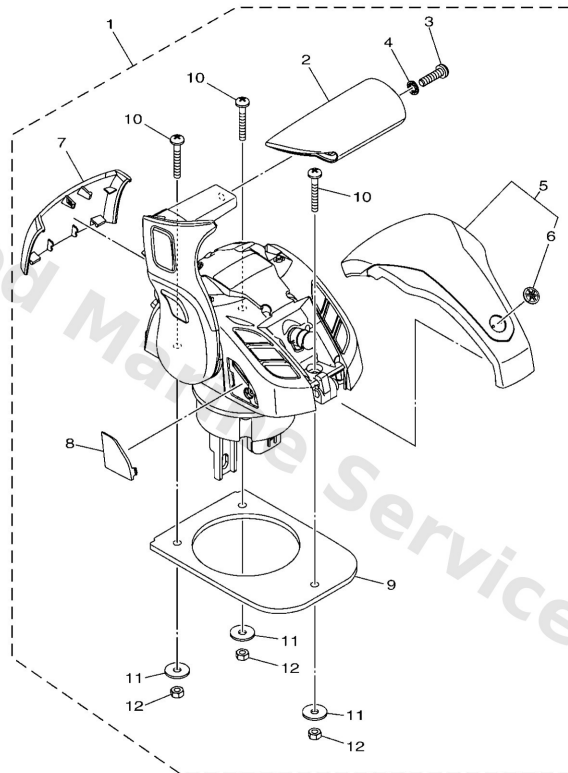


6X91100-U170

Ref	Part	
1	<a href="#">6X98355360</a> Wire, lead TRIPLE/QUAD, MAIN STATION	<a href="#">Buy now</a>
2	<a href="#">6X98355320</a> Conversion harness single, 2nd SINGLE, 2ND STATION	<a href="#">Buy now</a>
3	<a href="#">6X98355330</a> Conversion harness twin 2nd st TWIN, 2ND STATION	<a href="#">Buy now</a>
4	<a href="#">6X98355340</a> Wire, lead TRIPLE, 2ND STATION	<a href="#">Buy now</a>
5	<a href="#">6X98355350</a> Wire, lead QUAD, 2ND STATION	<a href="#">Buy now</a>

## Dec 1 (Single)

SINGLE ENGINE

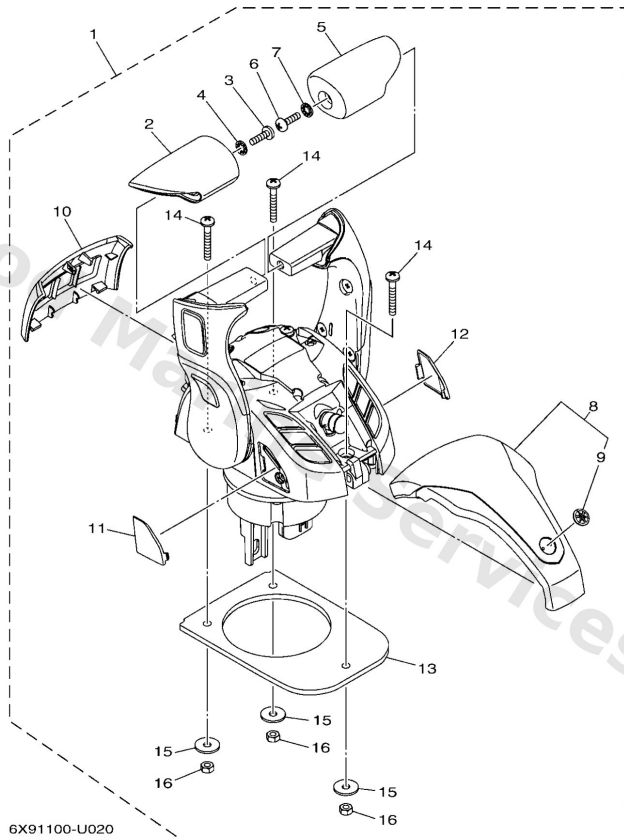


6X91100-U010

Ref	Part	
1	<a href="#">6X948A0100</a> Remote Control Box assembly 2 <b>NOT FOR SALE</b>	<a href="#">Buy now</a>
2	<a href="#">6X94822A00</a> Grip, lever singl	<a href="#">Buy now</a>
3	<a href="#">6X94812700</a> Screw 1	<a href="#">Buy now</a>
4	<a href="#">9299005300</a> Washer, tooth	<a href="#">Buy now</a>
5	<a href="#">6X94840000</a> Cover assembly	<a href="#">Buy now</a>
6	<a href="#">6X94269700</a> Tuning fork mark	<a href="#">Buy now</a>
7	<a href="#">6X94811C00</a> Cover, single	<a href="#">Buy now</a>
8	<a href="#">6X94816700</a> Plug	<a href="#">Buy now</a>
9	<a href="#">6X94817600</a> Grommet	<a href="#">Buy now</a>
10	<a href="#">9778050145</a> Screw, pan head tapping <b>UR</b>	<a href="#">Buy now</a>
10	<a href="#">9858005060</a> Screw, panhead <b>UR</b>	<a href="#">Buy now</a>
11	<a href="#">7044828700</a> Washer 1	<a href="#">Buy now</a>
12	<a href="#">9538005600</a> Nut, hexagon (663)	<a href="#">Buy now</a>

## Dec 2 (Multiple)

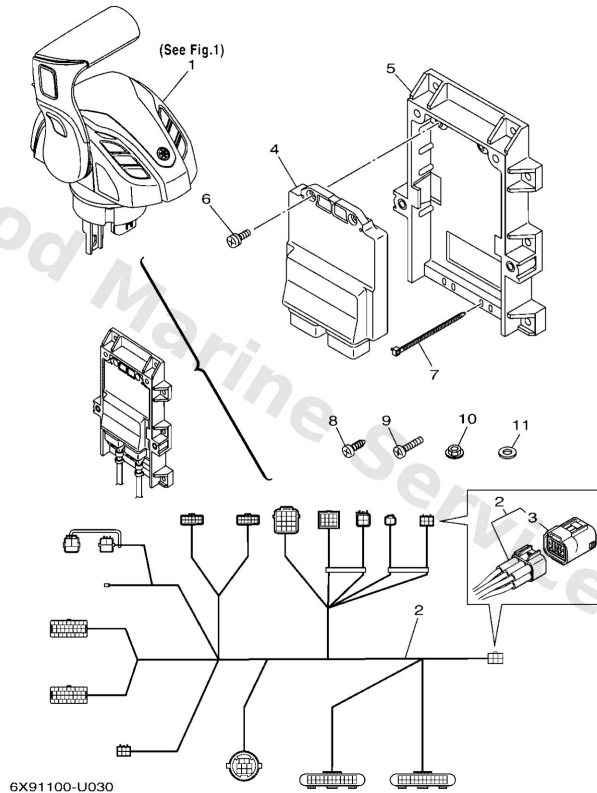
TWIN, TRIPLE, QUAD ENGINE



Ref	Part	
1	<a href="#">6X948A0200</a> Remote control box NOT FOR SALE	<a href="#">Buy now</a>
2	<a href="#">6X94822B00</a> Grip, lever multi	<a href="#">Buy now</a>
3	<a href="#">6X94812700</a> Screw 1	<a href="#">Buy now</a>
4	<a href="#">9299005300</a> Washer, tooth	<a href="#">Buy now</a>
5	<a href="#">6X94822200</a> Grip, control lever	<a href="#">Buy now</a>
8	<a href="#">6X94840000</a> Cover assembly	<a href="#">Buy now</a>
9	<a href="#">6X94269700</a> Tuning fork mark	<a href="#">Buy now</a>
10	<a href="#">6X94811900</a> Cover	<a href="#">Buy now</a>
11	<a href="#">6X94816700</a> Plug	<a href="#">Buy now</a>
12	<a href="#">6X94816800</a> Plug 2	<a href="#">Buy now</a>
13	<a href="#">6X94817600</a> Grommet	<a href="#">Buy now</a>
14	<a href="#">9778050145</a> Screw, pan head tapping UR	<a href="#">Buy now</a>
14	<a href="#">9858005060</a> Screw, panhead UR	<a href="#">Buy now</a>
15	<a href="#">7044828700</a> Washer 1	<a href="#">Buy now</a>
16	<a href="#">9538005600</a> Nut, hexagon (663)	<a href="#">Buy now</a>

## Dec 3 (Single/Main St)

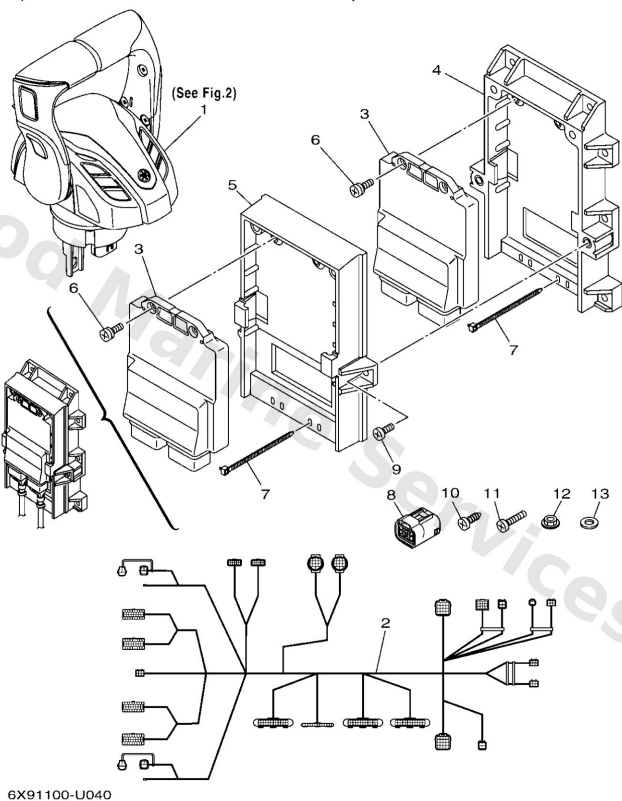
### DIGITAL ELECTRONIC CONTROL (SINGLE ENGINE / MAIN STATION)



Ref	Part	
1	<a href="#">6X948A0100</a> Remote Control Box assembly 2 <b>NOT FOR SALE</b>	<a href="#">Buy now</a>
2	<a href="#">6X98258000</a> Wire Harness assembly 2	<a href="#">Buy now</a>
3	<a href="#">6Y88537101</a> End of line resister	<a href="#">Buy now</a>
4	<a href="#">6X68559040</a> Control unit assembly	<a href="#">Buy now</a>
5	<a href="#">6X94821100</a> Housing,1	<a href="#">Buy now</a>
6	<a href="#">9760705212</a> Screw,w/washer	<a href="#">Buy now</a>
7	<a href="#">9046513M11</a> Clamp (6e5)	<a href="#">Buy now</a>
8	<a href="#">9016706M00</a> Screw, tapping (6h4)	<a href="#">Buy now</a>
9	<a href="#">9788006035</a> Screw, pan head(6h4)	<a href="#">Buy now</a>
10	<a href="#">9578006300</a> Nut, nylon (6g1)	<a href="#">Buy now</a>
11	<a href="#">9020106M30</a> Washer, plate (6a1)	<a href="#">Buy now</a>

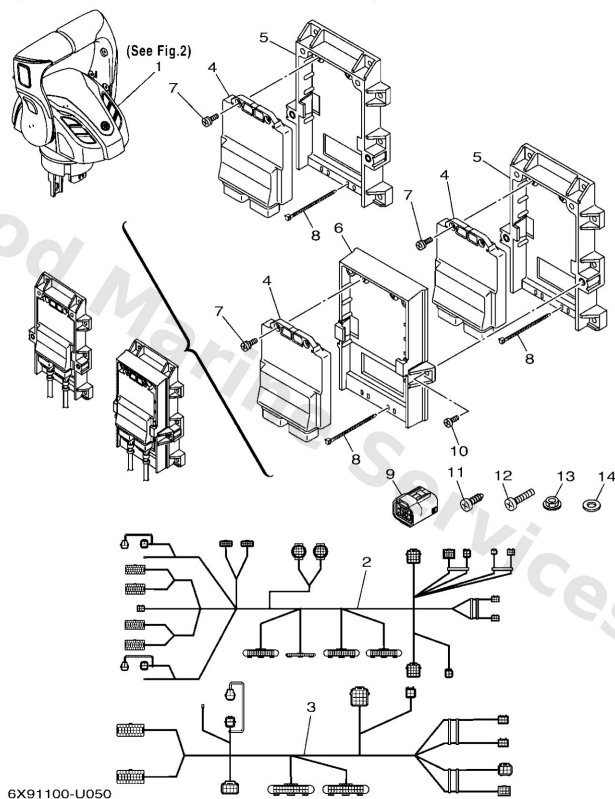


Dec 4 (Twin/Main St)



Ref	Part	
1	<a href="#">6X948A0200</a> Remote control box <b>NOT FOR SALE</b>	<a href="#">Buy now</a>
2	<a href="#">6X98258040</a> Wire Harness assembly 2	<a href="#">Buy now</a>
3	<a href="#">6X68559040</a> Control unit assembly	<a href="#">Buy now</a>
4	<a href="#">6X94821100</a> Housing,1	<a href="#">Buy now</a>
5	<a href="#">6X94821A00</a> Hsg. , 2	<a href="#">Buy now</a>
6	<a href="#">9760705212</a> Screw,w/washer	<a href="#">Buy now</a>
7	<a href="#">9046513M11</a> Clamp (6e5)	<a href="#">Buy now</a>
8	<a href="#">6Y88537101</a> End of line resister	<a href="#">Buy now</a>
9	<a href="#">9850706016</a> Screw, pan head(3tj)	<a href="#">Buy now</a>
10	<a href="#">9016706M00</a> Screw, tapping (6h4)	<a href="#">Buy now</a>
11	<a href="#">9788006035</a> Screw, pan head(6h4)	<a href="#">Buy now</a>
12	<a href="#">9578006300</a> Nut, nylon (6g1)	<a href="#">Buy now</a>
13	<a href="#">9020106M30</a> Washer, plate (6a1)	<a href="#">Buy now</a>

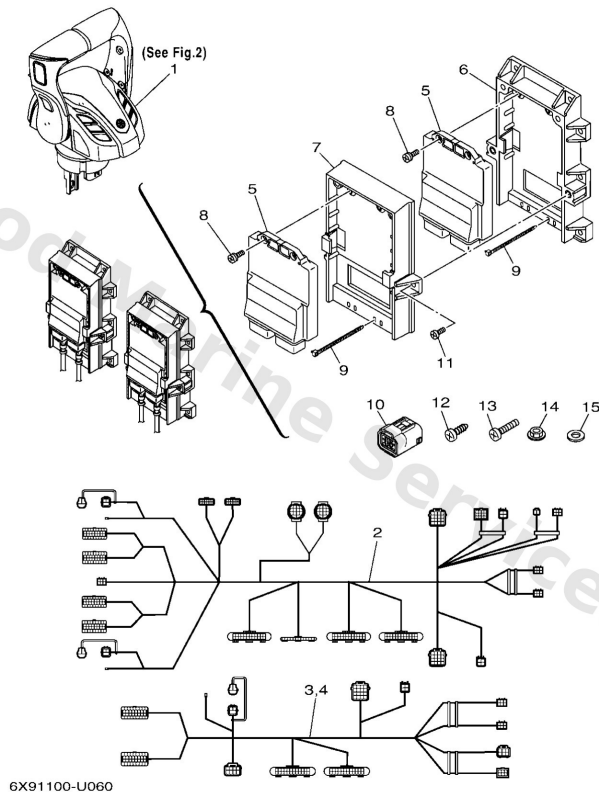
## Dec 5 (Triple/Main St)



Ref	Part	
1	<a href="#">6X948A0200</a> Remote control box <b>NOT FOR SALE</b>	<a href="#">Buy now</a>
2	<a href="#">6X98258040</a> Wire Harness assembly 2	<a href="#">Buy now</a>
3	<a href="#">6X982580C0</a> Wire Harness assembly 2	<a href="#">Buy now</a>
4	<a href="#">6X68559040</a> Control unit assembly	<a href="#">Buy now</a>
5	<a href="#">6X94821100</a> Housing,1	<a href="#">Buy now</a>
6	<a href="#">6X94821A00</a> Hsg. , 2	<a href="#">Buy now</a>
7	<a href="#">9760705212</a> Screw,w/washer	<a href="#">Buy now</a>
8	<a href="#">9046513M11</a> Clamp (6e5)	<a href="#">Buy now</a>
9	<a href="#">6Y88537101</a> End of line resister	<a href="#">Buy now</a>
10	<a href="#">9850706016</a> Screw, pan head(3tj)	<a href="#">Buy now</a>
11	<a href="#">9016706M00</a> Screw, tapping (6h4)	<a href="#">Buy now</a>
12	<a href="#">9788006035</a> Screw, pan head(6h4)	<a href="#">Buy now</a>
13	<a href="#">9578006300</a> Nut, nylon (6g1)	<a href="#">Buy now</a>
14	<a href="#">9020106M30</a> Washer, plate (6a1)	<a href="#">Buy now</a>

## Dec 6 (Quad/Main St)

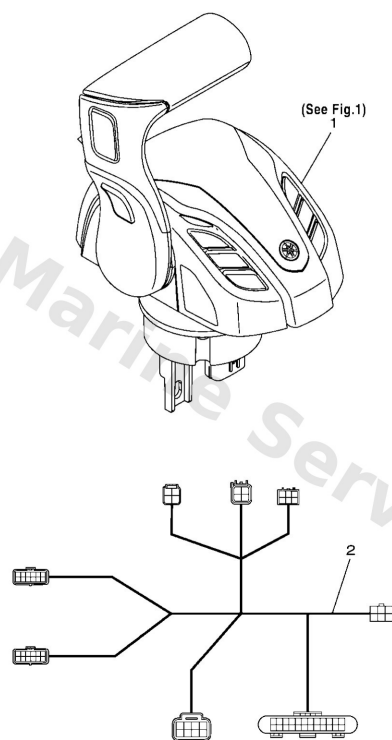
### DIGITAL ELECTRONIC CONTROL (QUAD ENGINE / MAIN STATION)



Ref	Part	
1	<a href="#">6X948A0200</a> Remote control box <b>NOT FOR SALE</b>	<a href="#">Buy now</a>
2	<a href="#">6X98258040</a> Wire Harness assembly 2	<a href="#">Buy now</a>
3	<a href="#">6X982580C0</a> Wire Harness assembly 2	<a href="#">Buy now</a>
4	<a href="#">6X982580D0</a> Wire Harness assembly 2	<a href="#">Buy now</a>
5	<a href="#">6X68559040</a> Control unit assembly	<a href="#">Buy now</a>
6	<a href="#">6X94821100</a> Housing,1	<a href="#">Buy now</a>
7	<a href="#">6X94821A00</a> Hsg. , 2	<a href="#">Buy now</a>
8	<a href="#">9760705212</a> Screw,w/washer	<a href="#">Buy now</a>
9	<a href="#">9046513M11</a> Clamp (6e5)	<a href="#">Buy now</a>
10	<a href="#">6Y88537101</a> End of line resistor	<a href="#">Buy now</a>
11	<a href="#">9850706016</a> Screw, pan head(3tj)	<a href="#">Buy now</a>
12	<a href="#">9016706M00</a> Screw, tapping (6h4)	<a href="#">Buy now</a>
13	<a href="#">9788006035</a> Screw, pan head(6h4)	<a href="#">Buy now</a>
14	<a href="#">9578006300</a> Nut, nylon (6g1)	<a href="#">Buy now</a>
15	<a href="#">9020106M30</a> Washer, plate (6a1)	<a href="#">Buy now</a>

## Dec 7 (Single/2Nd St)

DIGITAL ELECTRONIC CONTROL  
(SINGLE ENGINE / 2ND STATION)

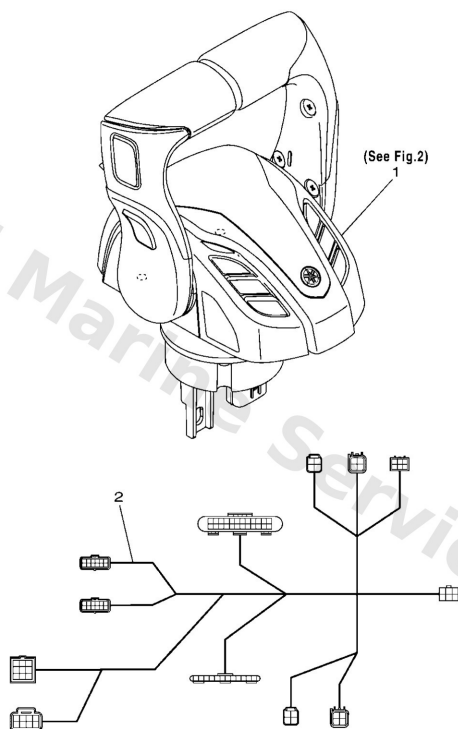


6X91100-U070

Ref	Part	
1	<a href="#">6X948A0100</a> Remote Control Box assembly 2 <b>NOT FOR SALE</b>	<a href="#">Buy now</a>
2	<a href="#">6X98258010</a> Wire harness assembly 2	<a href="#">Buy now</a>

## Dec 8 (Multiple/2Nd St)

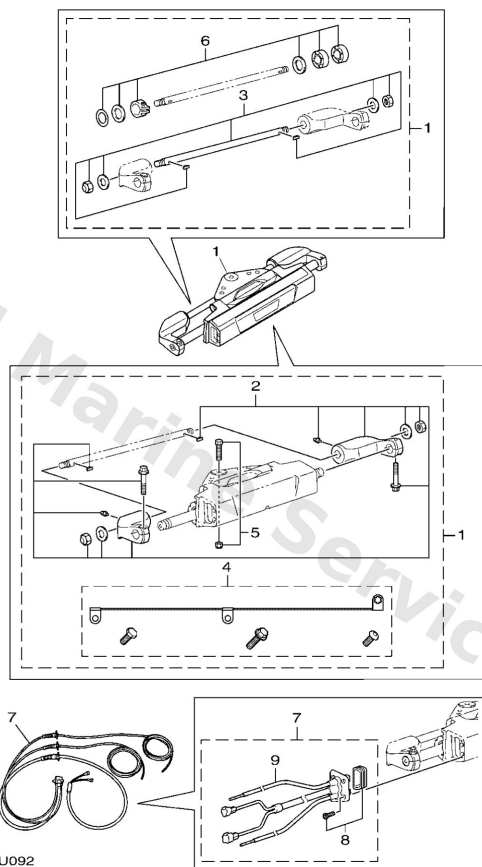
DIGITAL ELECTRONIC CONTROL  
(TWIN, TRIPLE, QUAD ENGINE / 2ND STATION)



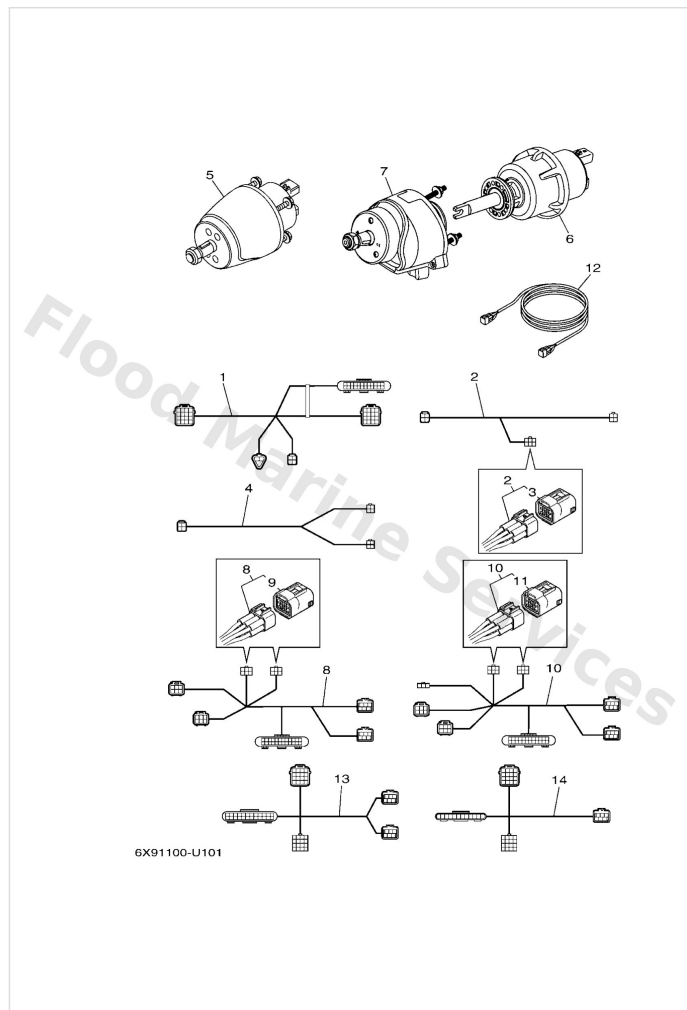
6X91100-U080

Ref	Part	
1	<a href="#">6X948A0200</a> Remote control box NOT FOR SALE	<a href="#">Buy now</a>
2	<a href="#">6X98258050</a> Wire harness assembly 2	<a href="#">Buy now</a>

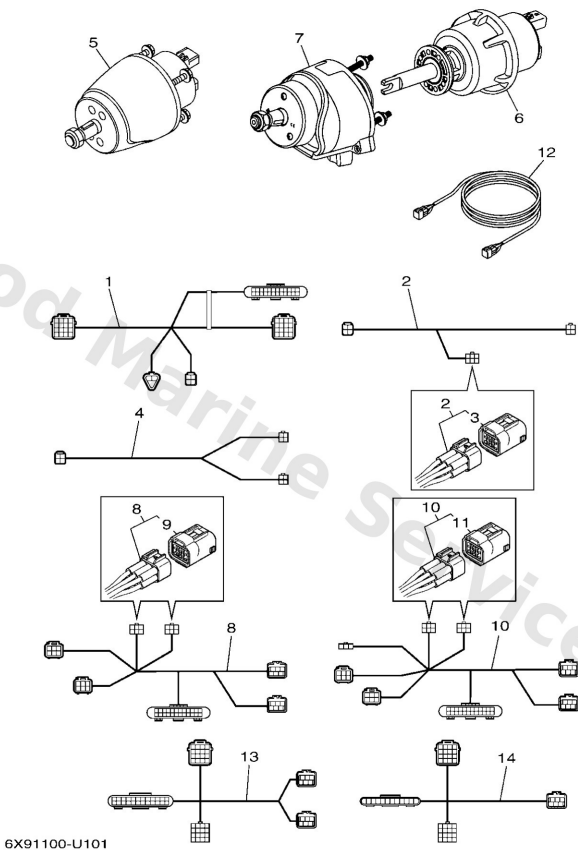
# Des 1



Ref	Part	
1	<a href="#">6X94240100</a> Bolt-on des kit	<a href="#">Buy now</a>
2	<a href="#">6X94240200</a> Repair kit, 1	<a href="#">Buy now</a>
3	<a href="#">6X94240300</a> Repair kit, 2	<a href="#">Buy now</a>
4	<a href="#">6X94240400</a> Repair kit, 3	<a href="#">Buy now</a>
5	<a href="#">6X94240500</a> Repair kit, 4	<a href="#">Buy now</a>
6	<a href="#">6X94240600</a> Repair kit, 5	<a href="#">Buy now</a>
7	<a href="#">6X9438A000</a> Steering actuator harness 2.4m UR 2.4M-8FT	<a href="#">Buy now</a>
7	<a href="#">6X9438A010</a> Steering actuator harness 4.5m UR 4.5M-15FT	<a href="#">Buy now</a>
7	<a href="#">6X9438A020</a> Steer act harness 2.4m u-shape UR 2.4M-8FT	<a href="#">Buy now</a>
7	<a href="#">6X9438A030</a> Steer act harness 4.5m u-shape UR 4.5M-15FT	<a href="#">Buy now</a>
7	<a href="#">6X9438A040</a> Str act harn 2.4m no blkhd fit UR 2.4M-8FT NO BULKHEAD	<a href="#">Buy now</a>
8	<a href="#">6X94240700</a> Repair kit, 6	<a href="#">Buy now</a>
9	<a href="#">6X94240800</a> - EXCEPT FOR 6X9-438A0-40	<a href="#">Buy now</a>



Ref	Part	
1	<a href="#">6X98258A90</a> Extn.wire harness 2 SCU to 16-PIN	<a href="#">Buy now</a>
2	<a href="#">6GR8111500</a> Scu link harness p/s 5ft UR PORT/STBD ENGINE	<a href="#">Buy now</a>
2	<a href="#">6GR8111510</a> Scu link harness p/s 10ft UR PORT/STBD ENGINE	<a href="#">Buy now</a>
2	<a href="#">6X98111500</a> Scu link harness 0.3m-1ft p/s UR PORT/STBD ENGINE	<a href="#">Buy now</a>
3	<a href="#">6Y88537101</a> End of line resistor	<a href="#">Buy now</a>
4	<a href="#">6GR8111520</a> Scu link harness center 5ft UR CENTER ENGINE	<a href="#">Buy now</a>
4	<a href="#">6GR8111530</a> Scu link harness center 10ft UR CENTER ENGINE	<a href="#">Buy now</a>
4	<a href="#">6X98111510</a> Scu link harness 0.3m-1ft (c) UR CENTER ENGINE	<a href="#">Buy now</a>
5	<a href="#">6X9615A000</a> Compact helm kit	<a href="#">Buy now</a>
6	<a href="#">6GR615A000</a> Helm unit assembly tilt (2) ASK TO MARINE DIV	<a href="#">Buy now</a>
7	<a href="#">6GR6154A00</a> Tilt Helm Unit (1) ASK TO MARINE DIV	<a href="#">Buy now</a>
8	<a href="#">6X98258AA0</a> Helm harness 0.9m-3ft (single) SINGLE ENGINE (2ND ST)	<a href="#">Buy now</a>
10	<a href="#">6X98258AB0</a> Helm harness 2nd station 0.9m MULTIPLE ENGINES (2ND ST)	<a href="#">Buy now</a>
12	<a href="#">6X68258A90</a> 16p dbw harness 1.5m-5ft 1.5M-5FT MAIN-HARNESS (16P)	<a href="#">Buy now</a>
13	<a href="#">6GR8258A00</a> Helm harness (main/single 0.9m UR SINGLE ENGINE (MAIN ST)	<a href="#">Buy now</a>



Ref	Part	
13	<a href="#">6GR8258A40</a> Helm harness (main/single)1.8m UR SINGLE ENGINE (MAIN ST)	<a href="#">Buy now</a>
14	<a href="#">6GR8258A10</a> Helm harness multi engines 0.9 UR MULTIPLE ENGINES (MAIN ST)	<a href="#">Buy now</a>
14	<a href="#">6GR8258A50</a> Helm harness multi engines 1.8 UR MULTIPLE ENGINES (MAIN ST)	<a href="#">Buy now</a>
14	<a href="#">6GR8258A60</a> Helm harness multi engines 2.7 UR MULTIPLE ENGINES (MAIN ST)	<a href="#">Buy now</a>

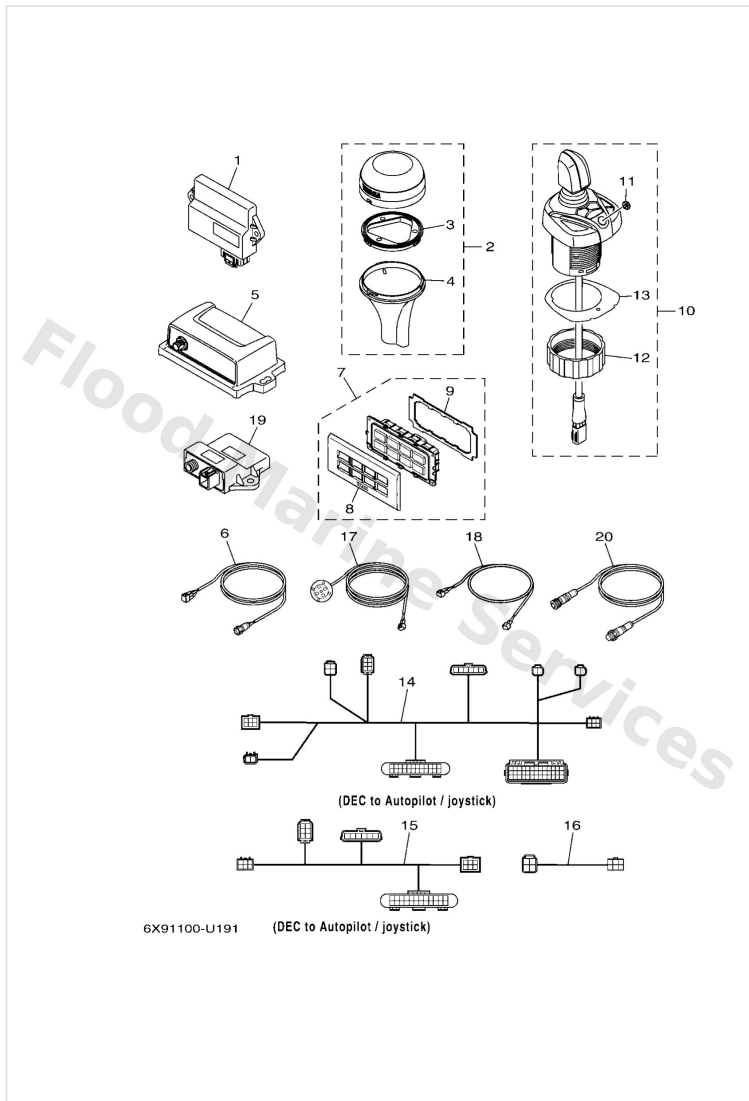


# Immobilizer Kit

6X91100-U180

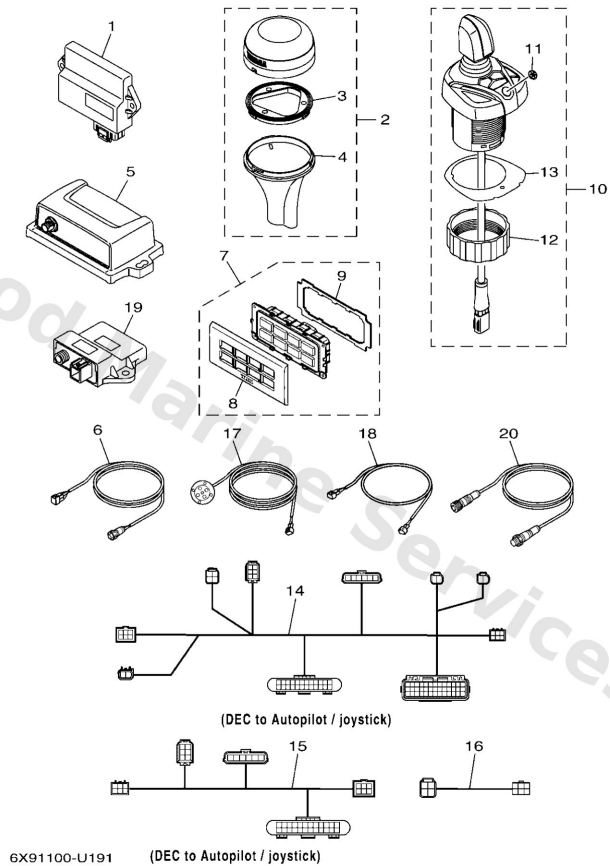
Ref	Part	
1	<a href="#">6X98626000</a> Remote control unit assembly UR RADIO FREQUENCY 433MHZ	<a href="#">Buy now</a>
1	<a href="#">6X98626010</a> Remote control unit assembly UR RADIO FREQUENCY 315MHZ	<a href="#">Buy now</a>
2	<a href="#">6X98626100</a> Xmtr. comp. FOR 6X9-86260-00	<a href="#">Buy now</a>
2	<a href="#">6X98626110</a> Xmtr. Comp. FOR 6X9-86260-10	<a href="#">Buy now</a>
3	<a href="#">6X98626700</a> Case complete 1	<a href="#">Buy now</a>
4	<a href="#">6X98194800</a> Bracket	<a href="#">Buy now</a>
5	<a href="#">6X98554600</a> Band	<a href="#">Buy now</a>
6	<a href="#">6X98250910</a> Wire, sub lead	<a href="#">Buy now</a>
7	<a href="#">7038338311</a> Buzzer	<a href="#">Buy now</a>
8	<a href="#">9588006016</a> Bolt, flange(jl8)	<a href="#">Buy now</a>

# Joystick And Autopilot



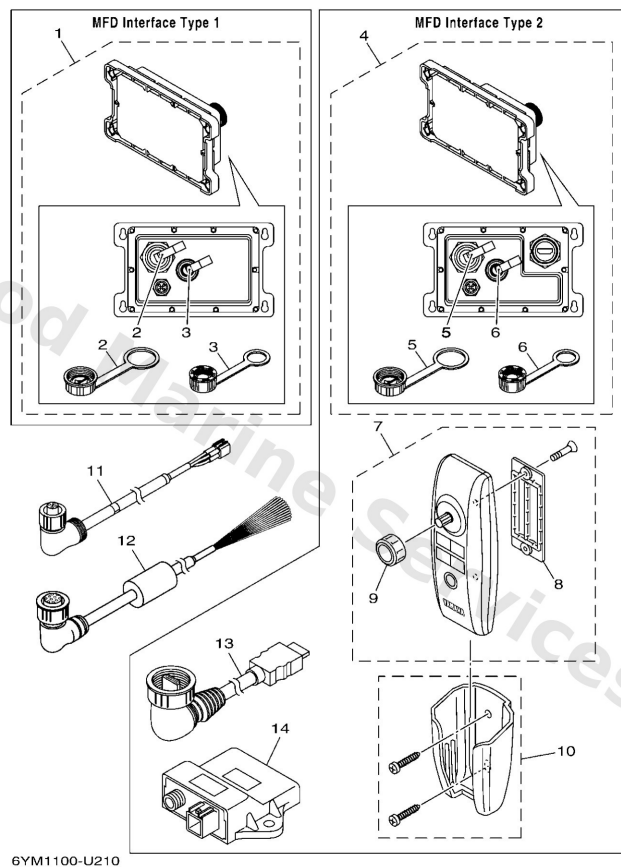
Ref	Part	
1	<a href="#">6X98591T10</a> Bcu (ap/joystick single) UR ASK TO MARINE DIV	<a href="#">Buy now</a>
1	<a href="#">6X98591T20</a> Bcu (ap/joystick twin) UR ASK TO MARINE DIV	<a href="#">Buy now</a>
1	<a href="#">6X98591T30</a> Bcu (ap/joystick triple) UR ASK TO MARINE DIV	<a href="#">Buy now</a>
1	<a href="#">6X98591T40</a> Bcu (quad) UR ASK TO MARINE DIV	<a href="#">Buy now</a>
2	<a href="#">6X98810700</a> Gps unit	<a href="#">Buy now</a>
3	<a href="#">6X98252H00</a> Plate, holder	<a href="#">Buy now</a>
4	<a href="#">6X98255H00</a> Holder, socket	<a href="#">Buy now</a>
5	<a href="#">6X98A41000</a> Sensor unit	<a href="#">Buy now</a>
6	<a href="#">6YM8355300</a> Conversion harness c15-pigtail	<a href="#">Buy now</a>
7	<a href="#">6X98253V00</a> Control panel assembly	<a href="#">Buy now</a>
8	<a href="#">6X98257180</a> Panel, switch	<a href="#">Buy now</a>
9	<a href="#">6X92248080</a> Seal assembly	<a href="#">Buy now</a>
10	<a href="#">6X9482A000</a> Joystick assembly blue ASK TO MARINE DIV	<a href="#">Buy now</a>
11	<a href="#">6X94269700</a> Tuning fork mark	<a href="#">Buy now</a>
12	<a href="#">6X94815600</a> Nut 1	<a href="#">Buy now</a>

## Joystick And Autopilot



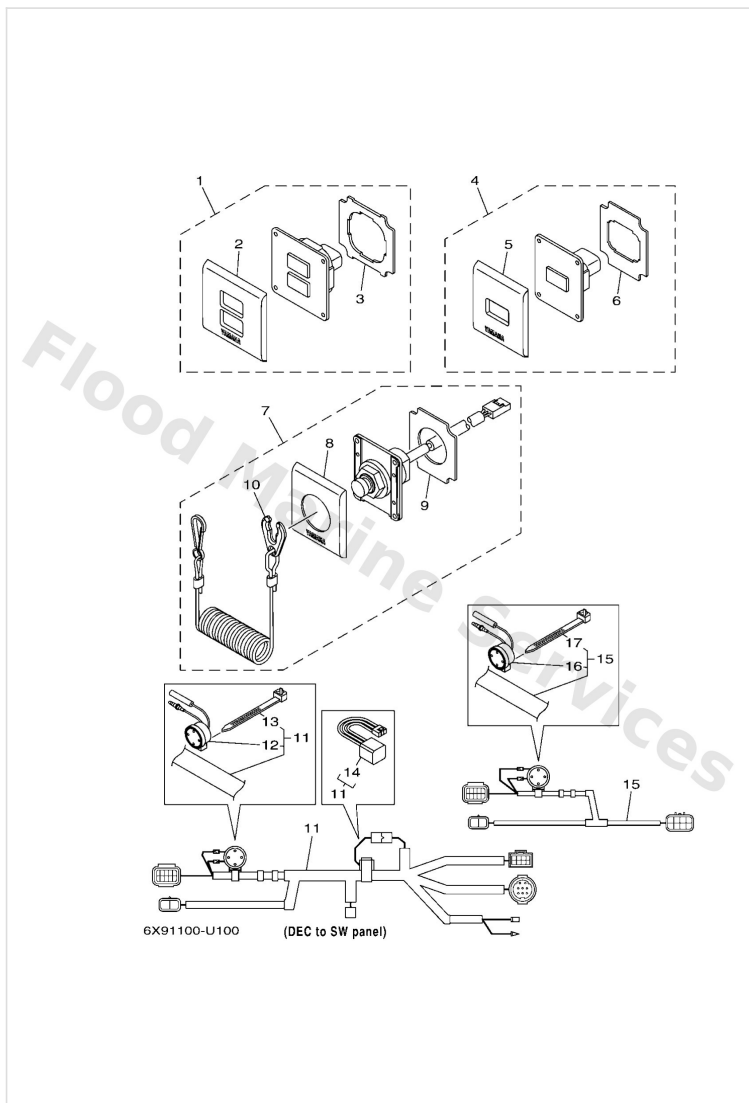
Ref	Part	
13	<a href="#">6X94823A00</a> Packing	<a href="#">Buy now</a>
14	<a href="#">6X98238600</a> Bcu Harness (Main St)	<a href="#">Buy now</a>
15	<a href="#">6X98238610</a> Extension, wire harness 2ND STATION	<a href="#">Buy now</a>
16	<a href="#">6X98355310</a> Wire, lead 6PIN-4PIN (MAIN BUS-PIGTAIL)	<a href="#">Buy now</a>
17	<a href="#">6ES8372001</a> L.e.d ass'y	<a href="#">Buy now</a>
18	<a href="#">6X98258620</a> Extension prop lights 6m UR 6.1M-20FT	<a href="#">Buy now</a>
18	<a href="#">6X98258630</a> Extension prop lights 9m UR 9.1M-30FT	<a href="#">Buy now</a>
18	<a href="#">6X98258640</a> Extension prop lights 12m UR 12.2M-40FT	<a href="#">Buy now</a>
19	<a href="#">6YG8A2D010</a> Gateway FOR OTHER COMPATIBLE MFD	<a href="#">Buy now</a>
20	<a href="#">6YG8252100</a> Wire, lead	<a href="#">Buy now</a>

# Mfd Interface



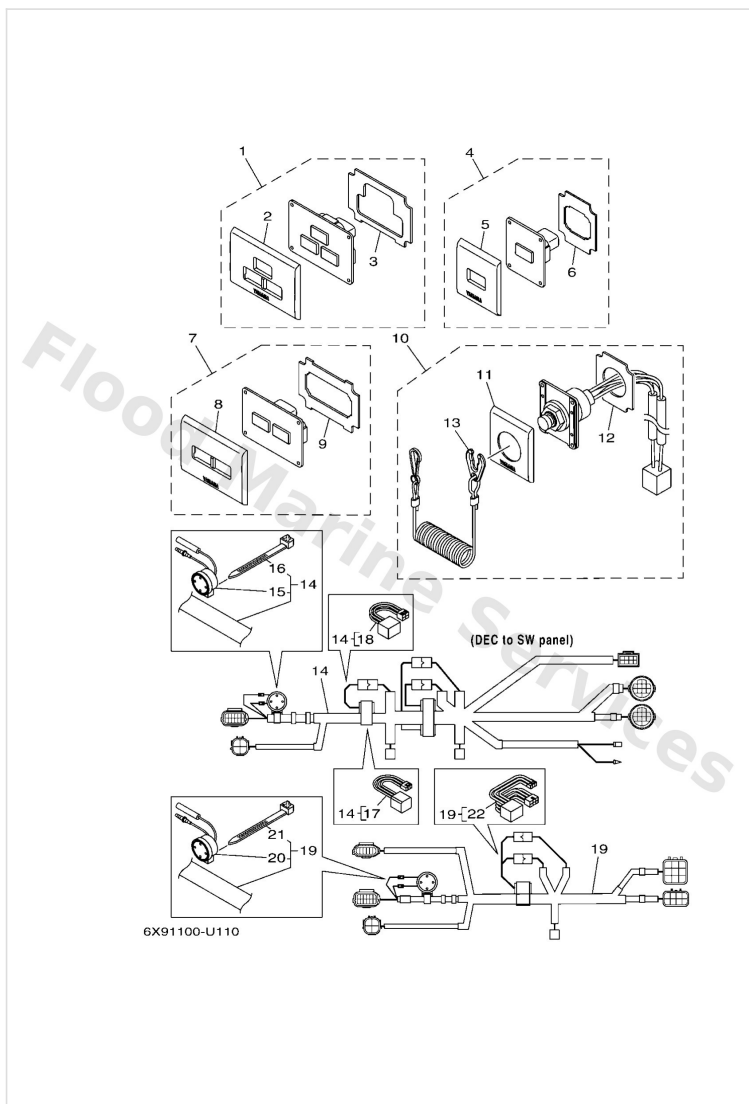
Ref	Part	
1	<a href="#">6YM8A2D010</a> Mfd Interface COMPATIBLE GARMIN MFD	<a href="#">Buy now</a>
2	<a href="#">6YM8395600</a> Cap 1	<a href="#">Buy now</a>
3	<a href="#">6YD8395700</a> Cap 2	<a href="#">Buy now</a>
4	<a href="#">6YM8A2D000</a> Mfd Interface	<a href="#">Buy now</a>
7	<a href="#">6YM8626100</a> - FOR 6YM-8A2D0-00 WITH Wi-Fi	<a href="#">Buy now</a>
8	<a href="#">6YM8212900</a> Cover, Battery	<a href="#">Buy now</a>
9	<a href="#">6YM8432M00</a> -	<a href="#">Buy now</a>
10	<a href="#">6YM60BJ000</a> Cradle assembly	<a href="#">Buy now</a>
11	<a href="#">6YM8355310</a> Wire, lead	<a href="#">Buy now</a>
12	<a href="#">6YM8356N00</a> Wire, lead	<a href="#">Buy now</a>
13	<a href="#">6YM8533A00</a> - FOR OTHER COMPATIBLE MFD	<a href="#">Buy now</a>
14	<a href="#">6YG8A2D010</a> Gateway FOR OTHER COMPATIBLE MFD	<a href="#">Buy now</a>

## Switch & Panel 1 (Eks, Single)



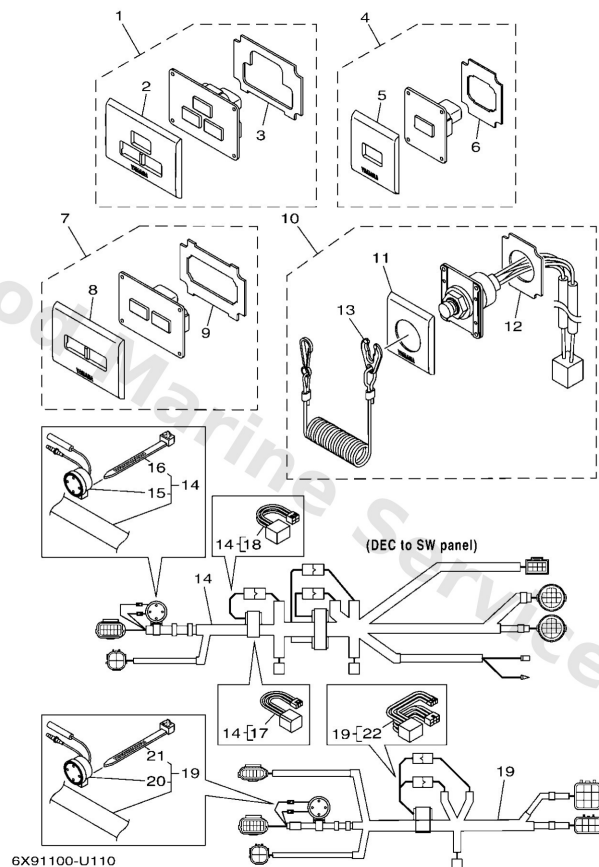
Ref	Part	
1	<a href="#">6X98257000</a> Panel switch assembly MAIN STATION	<a href="#">Buy now</a>
2	<a href="#">6X98257100</a> Panel, switch	<a href="#">Buy now</a>
3	<a href="#">6X92248000</a> Seal assembly	<a href="#">Buy now</a>
4	<a href="#">6X982570B0</a> Power sw start/stop 2nd st 2ND STATION	<a href="#">Buy now</a>
5	<a href="#">6X98257120</a> Panel, switch	<a href="#">Buy now</a>
6	<a href="#">6X92248020</a> Seal assembly	<a href="#">Buy now</a>
7	<a href="#">6X98257070</a> Panel switch assembly MAIN STATION & 2ND STATION	<a href="#">Buy now</a>
8	<a href="#">6X98257170</a> Panel, switch	<a href="#">Buy now</a>
9	<a href="#">6X92248070</a> Seal assembly	<a href="#">Buy now</a>
10	<a href="#">6828255600</a> Lanyard, stop switch	<a href="#">Buy now</a>
11	<a href="#">6X98271620</a> Eks Harness MAIN STATION	<a href="#">Buy now</a>
12	<a href="#">7038338311</a> Buzzer	<a href="#">Buy now</a>
13	<a href="#">9046513M39</a> Clamp(6e8)	<a href="#">Buy now</a>
14	<a href="#">6X98195000</a> Relay assembly	<a href="#">Buy now</a>
15	<a href="#">6X98271660</a> Cord switch 2ND STATION	<a href="#">Buy now</a>

## Switch & Panel 2 (Eks, Twin)



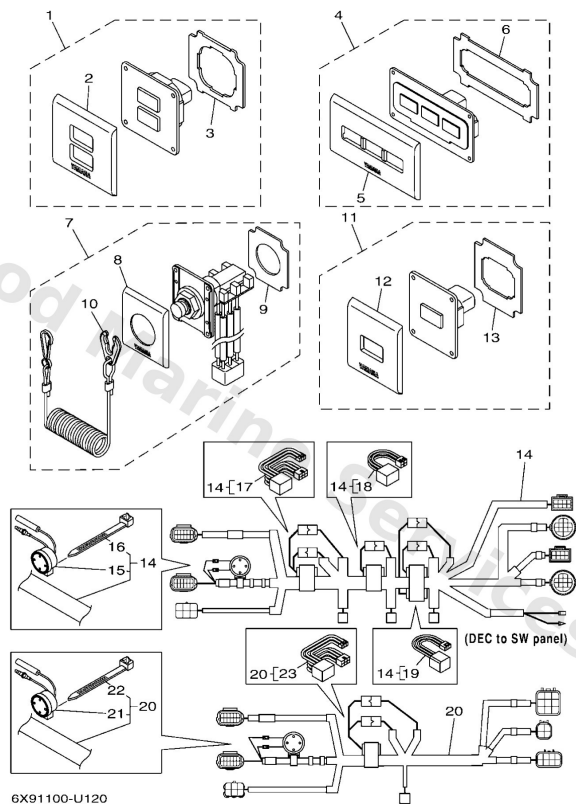
Ref	Part	
1	<a href="#">6X98257010</a> Panel switch assembly MAIN STATION	<a href="#">Buy now</a>
2	<a href="#">6X98257110</a> Panel, switch	<a href="#">Buy now</a>
3	<a href="#">6X92248010</a> Seal assembly	<a href="#">Buy now</a>
4	<a href="#">6X98257080</a> Power sw start/stop 2nd st 2ND STATION	<a href="#">Buy now</a>
5	<a href="#">6X98257120</a> Panel, switch	<a href="#">Buy now</a>
6	<a href="#">6X92248020</a> Seal assembly	<a href="#">Buy now</a>
7	<a href="#">6X98257030</a> Twin panel p+s start stop 2ND STATION	<a href="#">Buy now</a>
8	<a href="#">6X98257130</a> Panel, switch	<a href="#">Buy now</a>
9	<a href="#">6X92248030</a> Seal assembly	<a href="#">Buy now</a>
10	<a href="#">6X98257080</a> Panel switch assembly MAIN STATION & 2ND STATION	<a href="#">Buy now</a>
11	<a href="#">6X98257170</a> Panel, switch	<a href="#">Buy now</a>
12	<a href="#">6X92248070</a> Seal assembly	<a href="#">Buy now</a>
13	<a href="#">6828255600</a> Lanyard, stop switch	<a href="#">Buy now</a>
14	<a href="#">6X98271630</a> Eks Harness MAIN STATION	<a href="#">Buy now</a>
15	<a href="#">7038338311</a> Buzzer	<a href="#">Buy now</a>

## Switch & Panel 2 (Eks, Twin)



Ref	Part	
16	<a href="#">9046513M39</a> Clamp(6e8)	<a href="#">Buy now</a>
17	<a href="#">6X98195000</a> Relay assembly	<a href="#">Buy now</a>
18	<a href="#">6X68198000</a> Diode assembly	<a href="#">Buy now</a>
19	<a href="#">6X98271670</a> Eks harness <b>2ND STATION</b>	<a href="#">Buy now</a>
22	<a href="#">6X68198010</a> Diode assembly	<a href="#">Buy now</a>

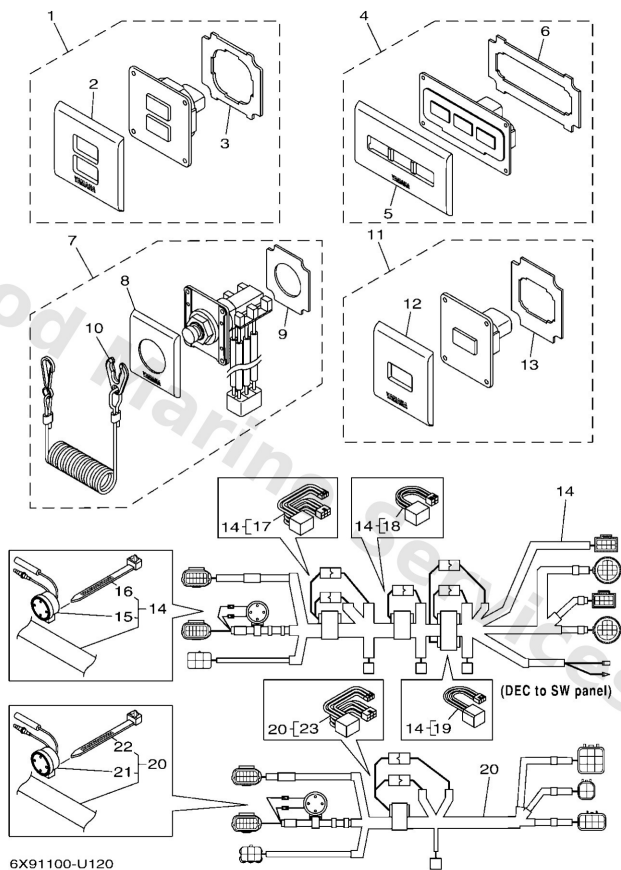
## Switch & Panel 3 (Eks, Triple)



Ref	Part	
1	<a href="#">6X98257000</a> Panel switch assembly MAIN STATION	<a href="#">Buy now</a>
2	<a href="#">6X98257100</a> Panel, switch	<a href="#">Buy now</a>
3	<a href="#">6X92248000</a> Seal assembly	<a href="#">Buy now</a>
4	<a href="#">6X98257040</a> Panel switch assembly MAIN STATION & 2ND STATION	<a href="#">Buy now</a>
5	<a href="#">6X98257140</a> Panel, switch	<a href="#">Buy now</a>
6	<a href="#">6X92248040</a> Seal assembly	<a href="#">Buy now</a>
7	<a href="#">6X982570C0</a> Panel switch assembly MAIN STATION & 2ND STATION	<a href="#">Buy now</a>
8	<a href="#">6X98257170</a> Panel, switch	<a href="#">Buy now</a>
9	<a href="#">6X92248070</a> Seal assembly	<a href="#">Buy now</a>
10	<a href="#">6828255600</a> Lanyard, stop switch	<a href="#">Buy now</a>
11	<a href="#">6X982570B0</a> Power sw start/stop 2nd st 2ND STATION	<a href="#">Buy now</a>
12	<a href="#">6X98257120</a> Panel, switch	<a href="#">Buy now</a>
13	<a href="#">6X92248020</a> Seal assembly	<a href="#">Buy now</a>
14	<a href="#">6X98271640</a> Eks Harness MAIN STATION	<a href="#">Buy now</a>
15	<a href="#">7038338311</a> Buzzer	<a href="#">Buy now</a>

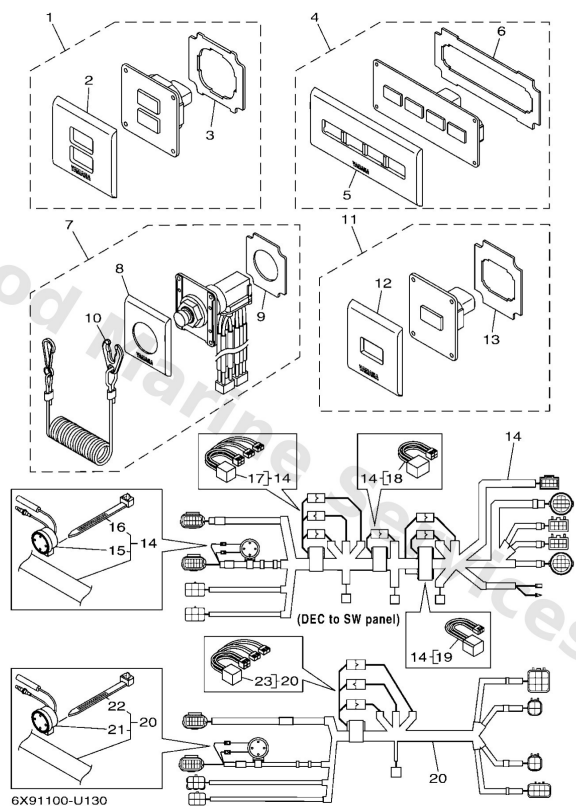


## Switch & Panel 3 (Eks, Triple)



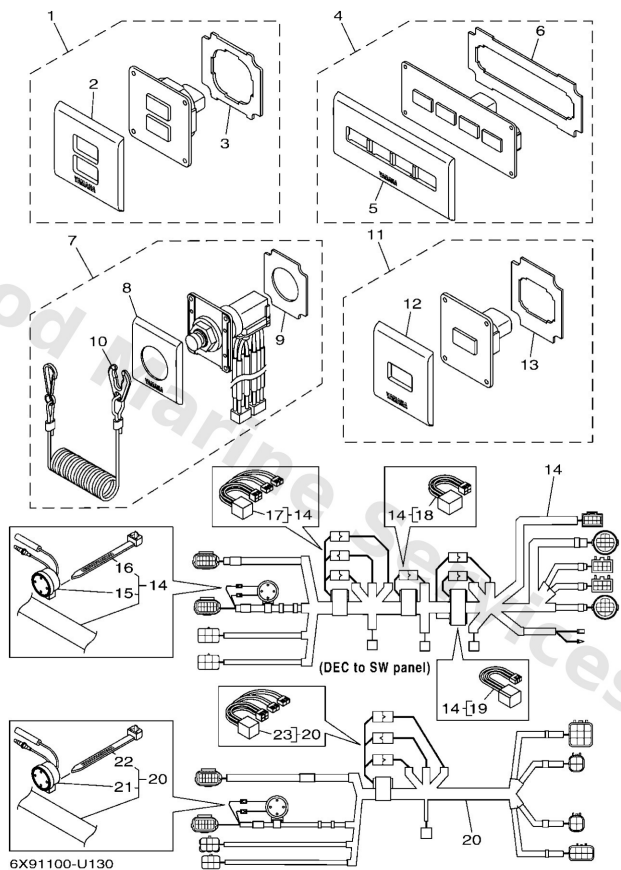
Ref	Part	
16	<a href="#">9046513M39</a> Clamp(6e8)	<a href="#">Buy now</a>
17	<a href="#">6X68198010</a> Diode assembly	<a href="#">Buy now</a>
18	<a href="#">6X68198000</a> Diode assembly	<a href="#">Buy now</a>
19	<a href="#">6X98195000</a> Relay assembly	<a href="#">Buy now</a>
20	<a href="#">6X98271680</a> Cord switch 2ND STATION	<a href="#">Buy now</a>

## Switch & Panel 4 (Eks, Quad)



Ref	Part	
1	<a href="#">6X98257000</a> Panel switch assembly MAIN STATION	<a href="#">Buy now</a>
2	<a href="#">6X98257100</a> Panel, switch	<a href="#">Buy now</a>
3	<a href="#">6X92248000</a> Seal assembly	<a href="#">Buy now</a>
4	<a href="#">6X98257050</a> Panel switch assembly MAIN STATION & 2ND STATION	<a href="#">Buy now</a>
5	<a href="#">6X98257150</a> Panel, switch	<a href="#">Buy now</a>
6	<a href="#">6X92248050</a> Seal assembly	<a href="#">Buy now</a>
7	<a href="#">6X982570D0</a> Emergency stop switch MAIN STATION & 2ND STATION	<a href="#">Buy now</a>
8	<a href="#">6X98257170</a> Panel, switch	<a href="#">Buy now</a>
9	<a href="#">6X92248070</a> Seal assembly	<a href="#">Buy now</a>
10	<a href="#">6828255600</a> Lanyard, stop switch	<a href="#">Buy now</a>
11	<a href="#">6X982570B0</a> Power sw start/stop 2nd st 2ND STATION	<a href="#">Buy now</a>
12	<a href="#">6X98257120</a> Panel, switch	<a href="#">Buy now</a>
13	<a href="#">6X92248020</a> Seal assembly	<a href="#">Buy now</a>
14	<a href="#">6X98271690</a> Eks Harness MAIN STATION	<a href="#">Buy now</a>
15	<a href="#">7038338311</a> Buzzer	<a href="#">Buy now</a>

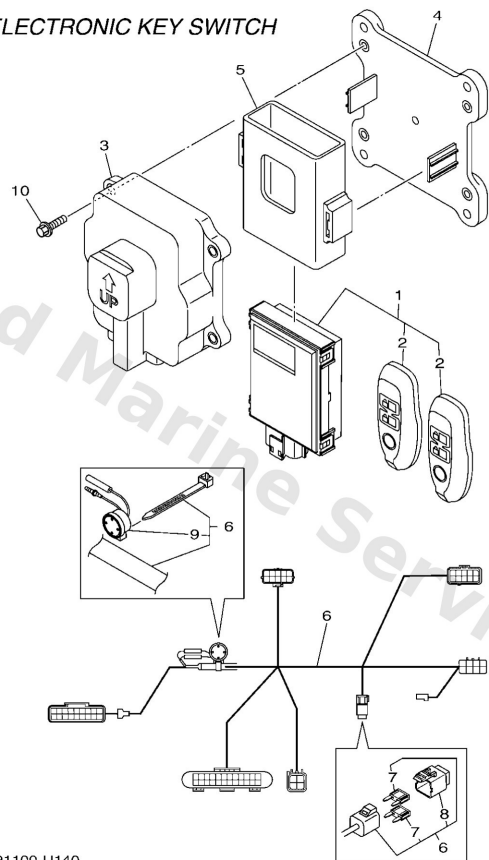
## Switch & Panel 4 (Eks, Quad)



Ref	Part	
16	<a href="#">9046513M39</a> Clamp(6e8)	<a href="#">Buy now</a>
17	<a href="#">6X68198040</a> Diode assembly	<a href="#">Buy now</a>
18	<a href="#">6X68198000</a> Diode assembly	<a href="#">Buy now</a>
19	<a href="#">6X98195000</a> Relay assembly	<a href="#">Buy now</a>
20	<a href="#">6X982716A0</a> Cord switch 2ND STATION	<a href="#">Buy now</a>

## Switch & Panel 5 (Eks,Key/Rec)

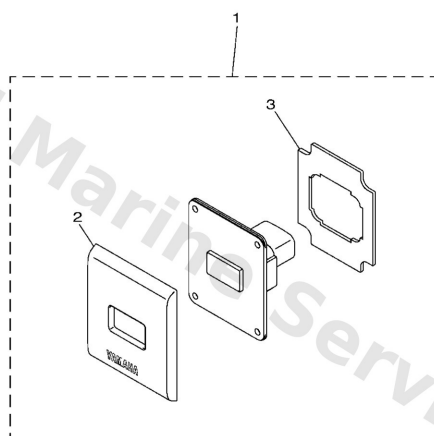
ELECTRONIC KEY SWITCH



6X91100-U140

Ref	Part	
1	<a href="#">6X98626000</a> Remote control unit assembly UR RADIO FREQUENCY 433MHz	<a href="#">Buy now</a>
1	<a href="#">6X98626010</a> Remote control unit assembly UR RADIO FREQUENCY 315MHz	<a href="#">Buy now</a>
2	<a href="#">6X98626100</a> Xmtr. comp. FOR 6X9-86260-00	<a href="#">Buy now</a>
2	<a href="#">6X98626110</a> Xmtr. Comp. FOR 6X9-86260-10	<a href="#">Buy now</a>
3	<a href="#">6X98626700</a> Case complete 1	<a href="#">Buy now</a>
4	<a href="#">6X98194800</a> Bracket	<a href="#">Buy now</a>
5	<a href="#">6X98554600</a> Band	<a href="#">Buy now</a>
6	<a href="#">6X98250900</a> Wire, sub lead	<a href="#">Buy now</a>
7	<a href="#">5J8215190</a> Fuse (5a)	<a href="#">Buy now</a>
8	<a href="#">69J8215B00</a> Cap (brown)	<a href="#">Buy now</a>
9	<a href="#">7038338311</a> Buzzer	<a href="#">Buy now</a>
10	<a href="#">9588006016</a> Bolt, flange(jl8)	<a href="#">Buy now</a>

## Switch & Panel 6



6X91100-U150

Ref	Part	
1	<a href="#">6X982570A0</a> Battery switch panel YMUS ONLY	<a href="#">Buy now</a>
2	<a href="#">6X98257120</a> Panel, switch	<a href="#">Buy now</a>
3	<a href="#">6X92248020</a> Seal assembly	<a href="#">Buy now</a>

# Disclaimer

This document is provided for convenience only. It is **not** an official Yamaha publication and is **not supplied, endorsed, or approved** by Yamaha Motor Co., Ltd.

Reasonable efforts are made to keep information accurate; however diagrams, part references, supersessions, descriptions, and applicability may contain errors or omissions. Specifications and part availability may change without notice.

You are responsible for confirming the correct parts for your engine (including model code, year, serial range, and any superseded part numbers) before ordering or fitting.