



# Yamaha Helm Master EX 2023

## Parts Manual

[www.floodmarine.co.uk](http://www.floodmarine.co.uk)

+44 2882 246 539

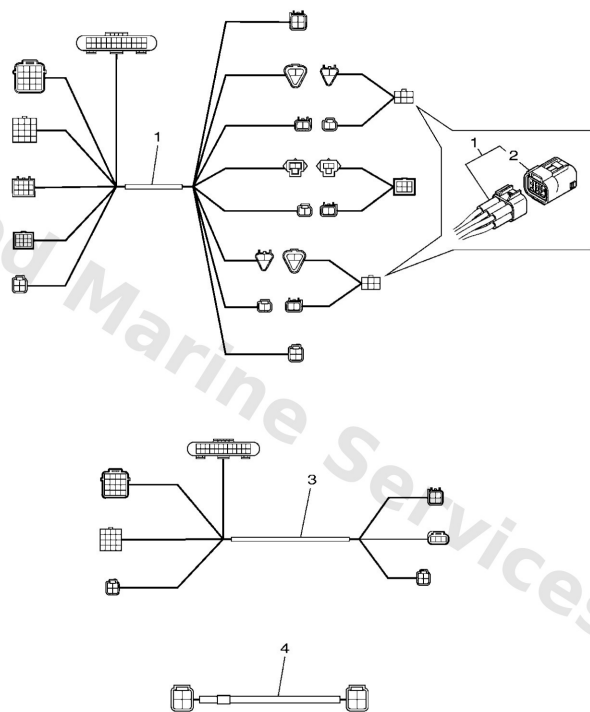
Authorised Yamaha Dealers



# Contents

<b>2ND HELM HARNESS</b>	3
<b>BATTERY MANAGEMENT SYSTEM</b>	4
<b>BOW THRUSTER</b>	5
<b>CL5 DISPLAY</b>	6
<b>CONVERSION HARNESS</b>	7
<b>COVER KIT</b>	8
<b>DEC 1 (SINGLE)</b>	9
<b>DEC 10 (SINGLE/2ND ST)</b>	11
<b>DEC 11 (MULTIPLE/2ND ST)</b>	12
<b>DEC 2 (MULTIPLE)</b>	13
<b>DEC 3 (FLUSH SIDE MOUNT)</b>	15
<b>DEC 4 (SINGLE/MAIN ST)</b>	16
<b>DEC 5 (TWIN/MAIN ST)</b>	17
<b>DEC 6 (TRIPLE/MAIN ST)</b>	18
<b>DEC 7 (QUAD/MAIN ST)</b>	19
<b>DEC 8 (QUINT/MAIN ST)</b>	20
<b>DEC 9 (FLUSH MOUNT/MAIN ST)</b>	21
<b>DES 1</b>	22
<b>DES 2</b>	23
<b>ELECTRICAL WIRE HARNESS 1</b>	25
<b>ELECTRICAL WIRE HARNESS 2</b>	26
<b>IMMOBILIZER KIT</b>	27
<b>JOYSTICK AND AUTOPILOT</b>	28
<b>MFD INTERFACE</b>	29
<b>SWITCH &amp; PANEL 1 (EKS, SINGLE)</b>	30
<b>SWITCH &amp; PANEL 2 (EKS, TWIN)</b>	31
<b>SWITCH &amp; PANEL 3 (EKS, TRIPLE)</b>	33
<b>SWITCH &amp; PANEL 4 (EKS, QUAD)</b>	35
<b>SWITCH &amp; PANEL 5 (EKS, QUINT)</b>	37
<b>SWITCH &amp; PANEL 6 (EKS,KEY/REC)</b>	39
<b>SWITCH &amp; PANEL 7</b>	40

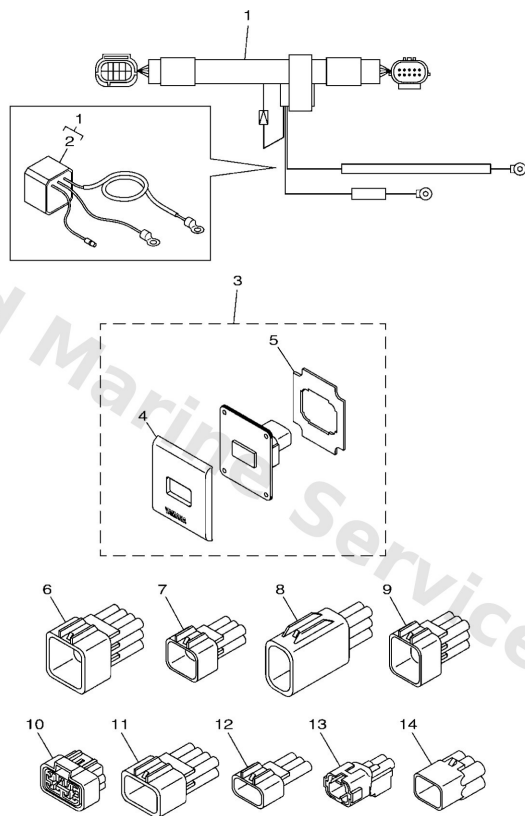
## 2Nd Helm Harness



6X91100-U160

Ref	Part	
1	<a href="#">6X98258A00</a> 2nd st harness (p) 5m-16ft UR	<a href="#">Buy now</a>
1	<a href="#">6X98258A10</a> 2nd st harness (p) 8m-26ft UR	<a href="#">Buy now</a>
1	<a href="#">6X98258A20</a> 2nd st harness (p) 12m-38ft UR	<a href="#">Buy now</a>
2	<a href="#">6Y88537101</a> End of line resister	<a href="#">Buy now</a>
3	<a href="#">6X98258A30</a> 2nd st harness (s) 5m-16ft UR EXCEPT SINGLE ENGINE	<a href="#">Buy now</a>
3	<a href="#">6X98258A40</a> 2nd st harness (s) 8m-26ft UR EXCEPT SINGLE ENGINE	<a href="#">Buy now</a>
3	<a href="#">6X98258A50</a> 2nd st harness (s) 12m-38ft UR EXCEPT SINGLE ENGINE	<a href="#">Buy now</a>
4	<a href="#">6X98258A60</a> 2nd st harness (c) 5m-16ft UR TRIPLE/QUAD/QUINT ENGINE	<a href="#">Buy now</a>
4	<a href="#">6X98258A70</a> 2nd st harness (c) 8m-26ft UR TRIPLE/QUAD/QUINT ENGINE	<a href="#">Buy now</a>
4	<a href="#">6X98258A80</a> 2nd st harness (c) 12m-38ft UR TRIPLE/QUAD/QUINT ENGINE	<a href="#">Buy now</a>

# Battery Management System

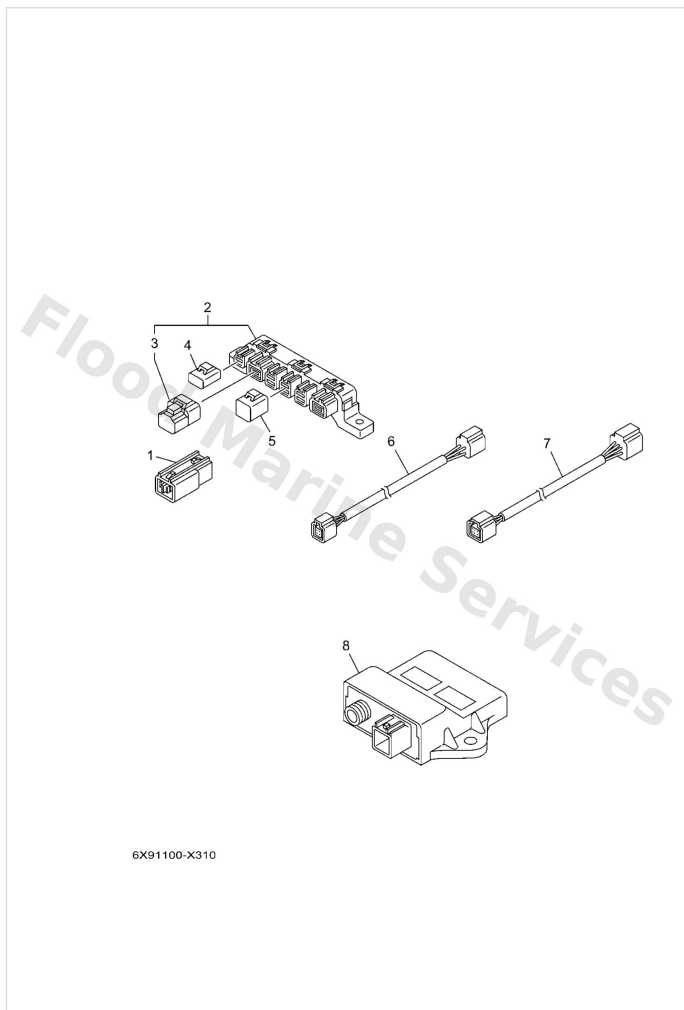


6X91100-V250

Ref	Part	
1	<a href="#">6X98271610</a> Cord switch	<a href="#">Buy now</a>
2	<a href="#">6X98339600</a> Switching Unit assembly	<a href="#">Buy now</a>
3	<a href="#">6X982570A1</a> Battery Switch Panel YMUS ONLY	<a href="#">Buy now</a>
4	<a href="#">6X98257120</a> Panel, switch	<a href="#">Buy now</a>
5	<a href="#">6X92248020</a> Seal assembly	<a href="#">Buy now</a>
6	<a href="#">6X98258200</a> Cap 1 (12p)	<a href="#">Buy now</a>
7	<a href="#">6X98258210</a> Cap 1 (6p)	<a href="#">Buy now</a>
8	<a href="#">6X98258220</a> Cap 1 (6p)	<a href="#">Buy now</a>
9	<a href="#">6X98258230</a> Cap 1 (9p)	<a href="#">Buy now</a>
10	<a href="#">6X98258240</a> Cap 1 (8p)	<a href="#">Buy now</a>
11	<a href="#">6X98258250</a> Cap 1 (8p)	<a href="#">Buy now</a>
12	<a href="#">6X98258260</a> Cap 1 (3p)	<a href="#">Buy now</a>
13	<a href="#">6X98258270</a> Cap 1 (2p)	<a href="#">Buy now</a>
14	<a href="#">6X98258280</a> Cap 1 (6p)	<a href="#">Buy now</a>

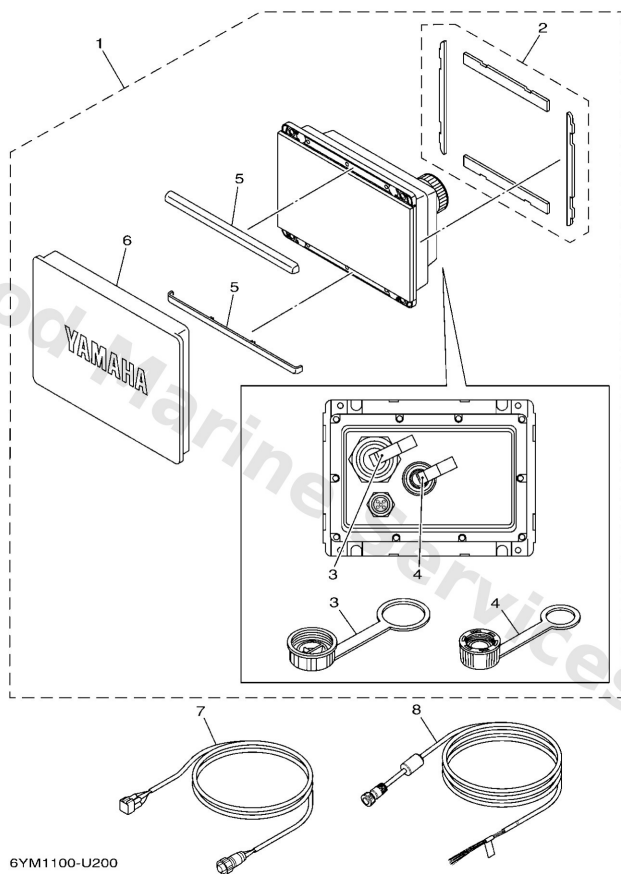


# Bow Thruster



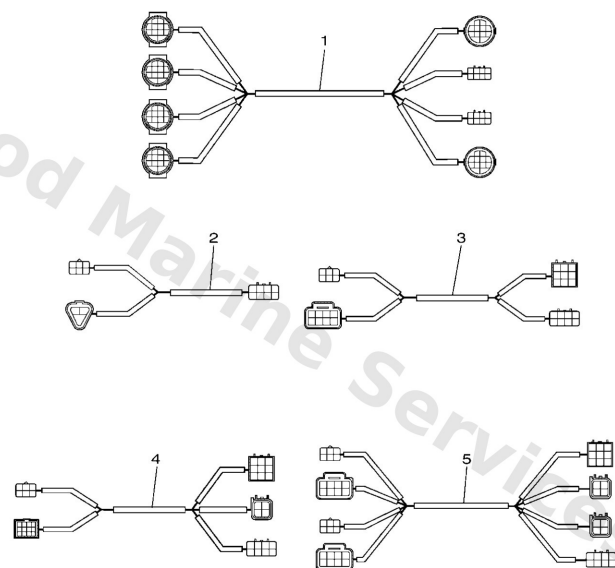
Ref	Part	
1	<a href="#">6Y88192011</a> Single-hub FOR SINGLE	<a href="#">Buy now</a>
2	<a href="#">6Y88192001</a> Multi-hub FOR MULTIPLE	<a href="#">Buy now</a>
3	<a href="#">6Y88537101</a> End of line resister	<a href="#">Buy now</a>
4	<a href="#">6Y88258201</a> Red cap 1 (2pin) FOR MULTIPLE	<a href="#">Buy now</a>
5	<a href="#">6Y88258211</a> White cap 1 (4pin) FOR MULTIPLE	<a href="#">Buy now</a>
6	<a href="#">6Y88252101</a> 1ft pigtail bus UR	<a href="#">Buy now</a>
6	<a href="#">6Y88252111</a> Pigtail bus wire 0.6m-2ft UR	<a href="#">Buy now</a>
6	<a href="#">6Y88252121</a> Pigtail bus wire 0.9m-3ft UR	<a href="#">Buy now</a>
7	<a href="#">6Y88255301</a> Main bus wire 0.3m-1ft UR	<a href="#">Buy now</a>
7	<a href="#">6Y88255311</a> Main bus wire 4.6m (15ft) UR	<a href="#">Buy now</a>
7	<a href="#">6Y88255321</a> Main bus wire 6.1m (20ft) UR	<a href="#">Buy now</a>
7	<a href="#">6Y88255331</a> Main bus wire 7.6m (25ft) UR	<a href="#">Buy now</a>
7	<a href="#">6Y88255341</a> Main bus wire 9.1m (30ft) UR	<a href="#">Buy now</a>
7	<a href="#">6Y88255350</a> Main bus wire 3.0m-10ft UR	<a href="#">Buy now</a>
8	<a href="#">6X98651000</a> Motor Control Unit assembly	<a href="#">Buy now</a>

## CI5 Display



Ref	Part	
1	<a href="#">6YM8371006</a> - WITH Wi-Fi	<a href="#">Buy now</a>
1	<a href="#">6YM8371016</a> CI5 display(with wi-fi) WITHOUT Wi-Fi	<a href="#">Buy now</a>
2	<a href="#">6YM2248000</a> Seal assembly	<a href="#">Buy now</a>
3	<a href="#">6YM8395600</a> Cap 1	<a href="#">Buy now</a>
4	<a href="#">6YD8395700</a> Cap 2	<a href="#">Buy now</a>
5	<a href="#">6YM8351200</a> Ring, speed meter	<a href="#">Buy now</a>
6	<a href="#">6YM8727800</a> Cover, meter	<a href="#">Buy now</a>
7	<a href="#">6YM8355300</a> Conversion harness cl5-pigtail	<a href="#">Buy now</a>
8	<a href="#">6YD8356N00</a> Wire, lead	<a href="#">Buy now</a>

# Conversion Harness

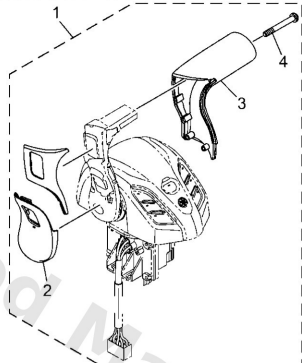


6X91100-U170

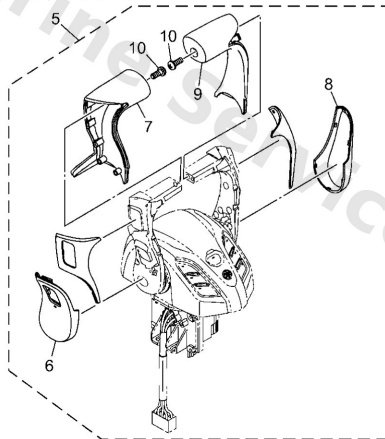
Ref	Part	
1	<a href="#">6X98355360</a> Wire, lead TRIPLE/QUAD, MAIN STATION	<a href="#">Buy now</a>
2	<a href="#">6X98355320</a> Conversion harness single, 2nd SINGLE, 2ND STATION	<a href="#">Buy now</a>
3	<a href="#">6X98355330</a> Conversion harness twin 2nd st TWIN, 2ND STATION	<a href="#">Buy now</a>
4	<a href="#">6X98355340</a> Wire, lead TRIPLE, 2ND STATION	<a href="#">Buy now</a>
5	<a href="#">6X98355350</a> Wire, lead QUAD, 2ND STATION	<a href="#">Buy now</a>

# Cover Kit

SINGLE LEVER FOR BLACK



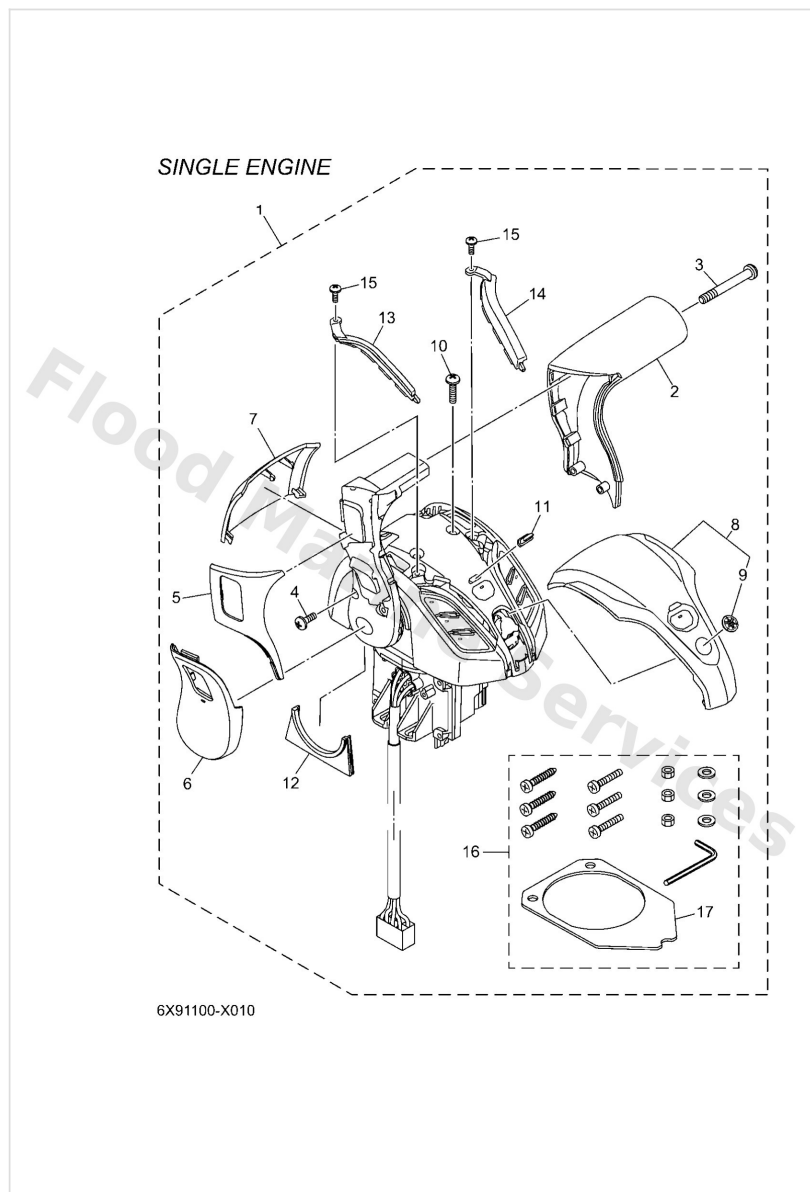
MULTIPLE LEVER FOR BLACK



6X91100-X270

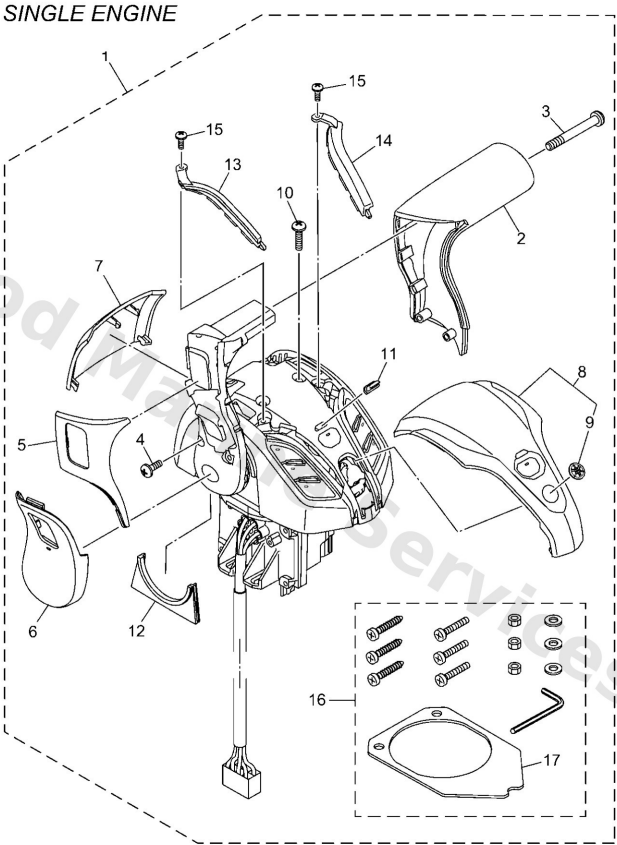
Ref	Part	
1	<a href="#">6X94613000</a> Cover Kit ASK TO MARINE DIV	<a href="#">Buy now</a>
2	<a href="#">6X94822500</a> Cover	<a href="#">Buy now</a>
3	<a href="#">6X94822A10</a> Grip, lever singl	<a href="#">Buy now</a>
4	<a href="#">6X94812720</a> Screw 1	<a href="#">Buy now</a>
5	<a href="#">6X94613010</a> Cover Kit ASK TO MARINE DIV	<a href="#">Buy now</a>
7	<a href="#">6X94822B10</a> Grip, lever multi	<a href="#">Buy now</a>
8	<a href="#">6X94822510</a> Cover	<a href="#">Buy now</a>
9	<a href="#">6X94822210</a> Grip, control lever	<a href="#">Buy now</a>
10	<a href="#">6X94812710</a> Screw 1	<a href="#">Buy now</a>

## Dec 1 (Single)



Ref	Part	
1	<a href="#">6X948A0110</a> Remote Control Box assembly 2 <b>NOT FOR SALE</b>	<a href="#">Buy now</a>
2	<a href="#">6X94822A10</a> Grip, lever singl	<a href="#">Buy now</a>
3	<a href="#">6X94812720</a> Screw 1	<a href="#">Buy now</a>
4	<a href="#">6X94418920</a> Screw	<a href="#">Buy now</a>
5	<a href="#">6X94822400</a> Cover, control lever	<a href="#">Buy now</a>
6	<a href="#">6X94822500</a> Cover	<a href="#">Buy now</a>
7	<a href="#">6X94811C10</a> Cover, single	<a href="#">Buy now</a>
8	<a href="#">6X94840010</a> Cover assembly	<a href="#">Buy now</a>
9	<a href="#">6X94269700</a> Tuning fork mark	<a href="#">Buy now</a>
10	<a href="#">6X94418900</a> Screw	<a href="#">Buy now</a>
11	<a href="#">6X98353200</a> Lens, pilot	<a href="#">Buy now</a>
12	<a href="#">6X94821900</a> Cover, lead	<a href="#">Buy now</a>
13	<a href="#">6X98441100</a> Lens, illuminate 1	<a href="#">Buy now</a>
14	<a href="#">6X98441200</a> Lens, illuminate 2	<a href="#">Buy now</a>
15	<a href="#">6X94418910</a> Screw	<a href="#">Buy now</a>

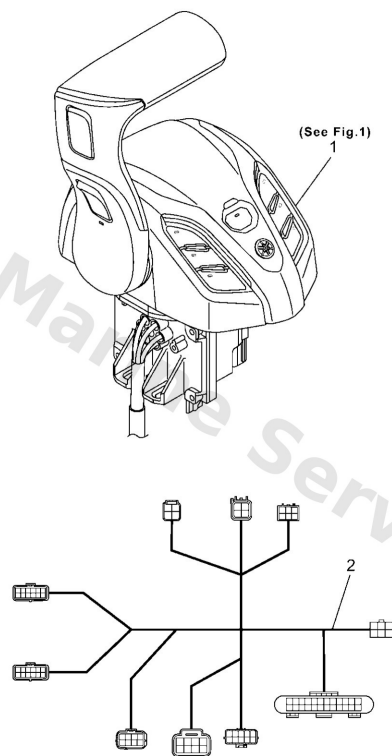
Dec 1 (Single)



Ref	Part	
16	<a href="#">6X94890110</a> Parts set 1	<a href="#">Buy now</a>
17	<a href="#">6X94817610</a> Grommet	<a href="#">Buy now</a>

## Dec 10 (Single/2Nd St)

DIGITAL ELECTRONIC CONTROL  
(SINGLE ENGINE / 2ND STATION)

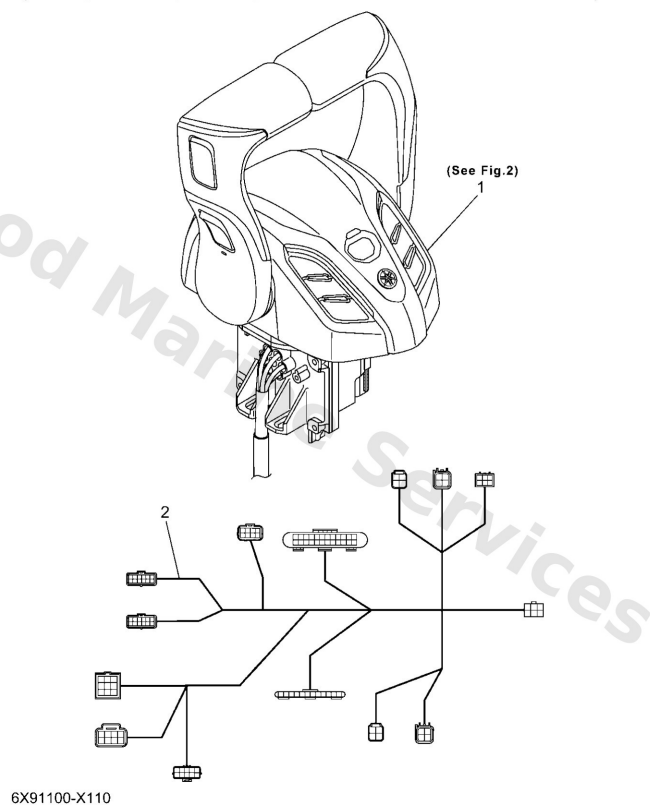


6X91100-X100

Ref	Part	
1	<a href="#">6X948A0110</a> Remote Control Box assembly 2 <b>NOT FOR SALE</b>	<a href="#">Buy now</a>
2	<a href="#">6X982580J0</a> Wire harness assembly 2	<a href="#">Buy now</a>

## Dec 11 (Multiple/2Nd St)

DIGITAL ELECTRONIC CONTROL  
(TWIN, TRIPLE, QUAD, QUINT ENGINE / 2ND STATION)

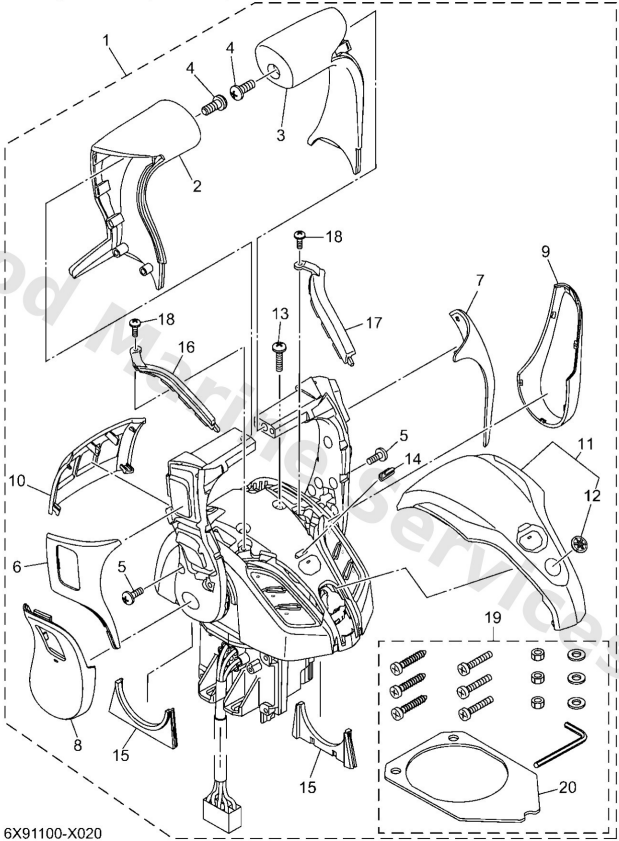


Ref	Part	
1	<a href="#">6X948A0210</a> Remote Control Box NOT FOR SALE	<a href="#">Buy now</a>
2	<a href="#">6X982580K0</a> Wire harness assembly 2	<a href="#">Buy now</a>



Dec 2 (Multiple)

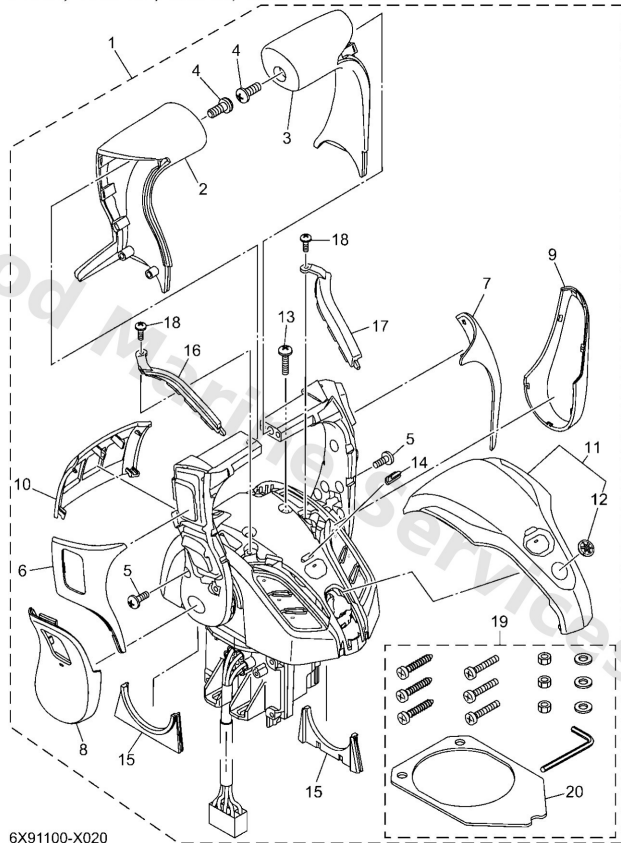
TWIN, TRIPLE, QUAD, QUINT ENGINE



Ref	Part	
1	<a href="#">6X948A0210</a> Remote Control Box NOT FOR SALE	<a href="#">Buy now</a>
2	<a href="#">6X94822B10</a> Grip, lever multi	<a href="#">Buy now</a>
3	<a href="#">6X94822210</a> Grip, control lever	<a href="#">Buy now</a>
4	<a href="#">6X94812710</a> Screw 1	<a href="#">Buy now</a>
5	<a href="#">6X94418920</a> Screw	<a href="#">Buy now</a>
6	<a href="#">6X94822400</a> Cover, control lever	<a href="#">Buy now</a>
7	<a href="#">6X94822410</a> Cover, control lever	<a href="#">Buy now</a>
8	<a href="#">6X94822500</a> Cover	<a href="#">Buy now</a>
9	<a href="#">6X94822510</a> Cover	<a href="#">Buy now</a>
10	<a href="#">6X94811910</a> Cover	<a href="#">Buy now</a>
11	<a href="#">6X94840010</a> Cover assembly	<a href="#">Buy now</a>
12	<a href="#">6X94269700</a> Tuning fork mark	<a href="#">Buy now</a>
13	<a href="#">6X94418900</a> Screw	<a href="#">Buy now</a>
14	<a href="#">6X98353200</a> Lens, pilot	<a href="#">Buy now</a>
15	<a href="#">6X94821900</a> Cover, lead	<a href="#">Buy now</a>

## Dec 2 (Multiple)

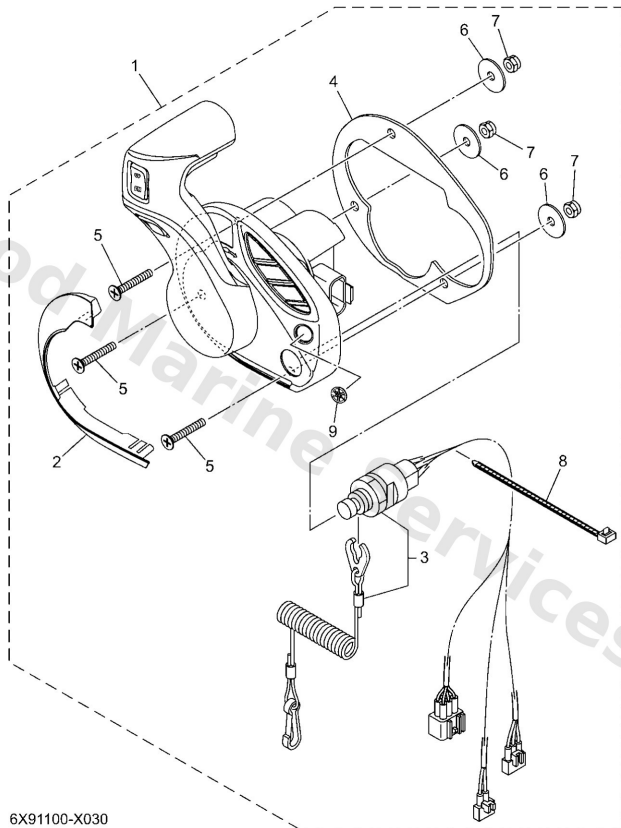
TWIN, TRIPLE, QUAD, QUINT ENGINE



Ref	Part	
16	<a href="#">6X98441100</a> Lens, illuminate 1	<a href="#">Buy now</a>
17	<a href="#">6X98441200</a> Lens, illuminate 2	<a href="#">Buy now</a>
18	<a href="#">6X94418910</a> Screw	<a href="#">Buy now</a>
19	<a href="#">6X94890110</a> Parts set 1	<a href="#">Buy now</a>
20	<a href="#">6X94817610</a> Grommet	<a href="#">Buy now</a>

## Dec 3 (Flush Side Mount)

SINGLE ENGINE (FLUSH SIDE MOUNT)

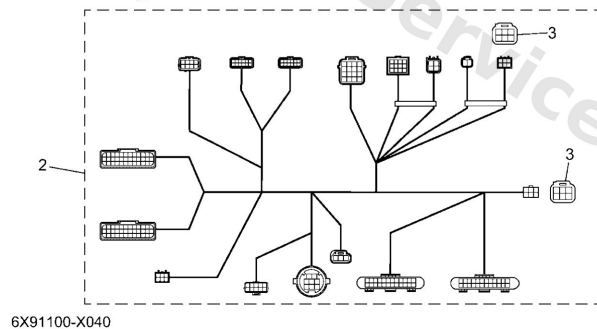
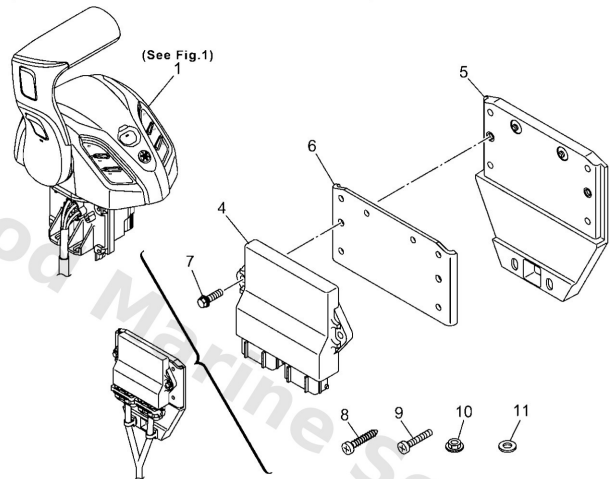


6X91100-X030

Ref	Part	
1	<a href="#">6X948A0001</a> Remote Control Box assembly 1 NOT FOR SALE	<a href="#">Buy now</a>
2	<a href="#">6X94816600</a> Plug	<a href="#">Buy now</a>
3	<a href="#">6X78257501</a> Engine stop switch assembly	<a href="#">Buy now</a>
4	<a href="#">6X94823B00</a> Packing 2	<a href="#">Buy now</a>
5	<a href="#">9778006230</a> Screw, tapping UR	<a href="#">Buy now</a>
5	<a href="#">9878006035</a> Screw flat head UR	<a href="#">Buy now</a>
6	<a href="#">7014828700</a> Washer 1	<a href="#">Buy now</a>
7	<a href="#">6X04815600</a> Nut 1	<a href="#">Buy now</a>
8	<a href="#">6X94282100</a> Band, clamp	<a href="#">Buy now</a>
9	<a href="#">6X94269700</a> Tuning fork mark	<a href="#">Buy now</a>

## Dec 4 (Single/Main St)

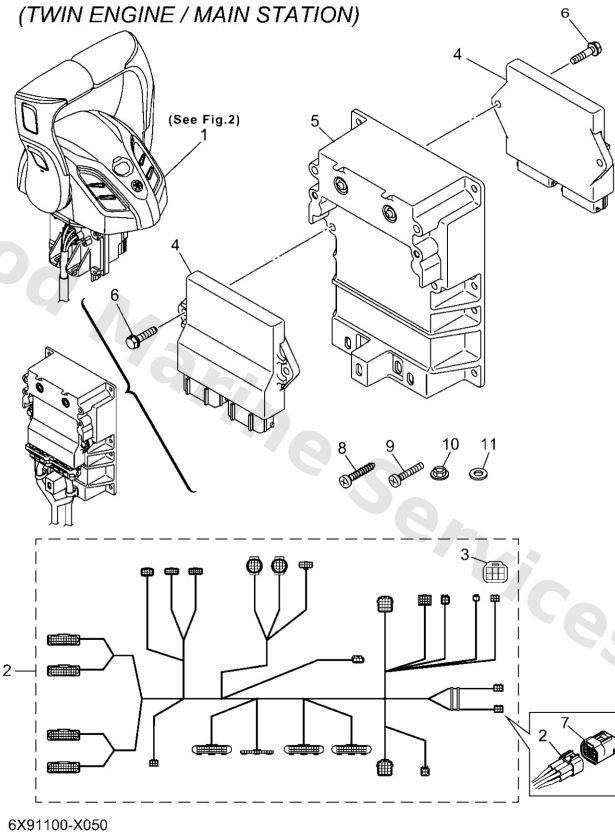
### DIGITAL ELECTRONIC CONTROL (SINGLE ENGINE / MAIN STATION)



Ref	Part	
1	<a href="#">6X948A0110</a> Remote Control Box assembly 2 <b>NOT FOR SALE</b>	<a href="#">Buy now</a>
2	<a href="#">6X98258060</a> Wire harness assembly 2	<a href="#">Buy now</a>
3	<a href="#">6Y88537101</a> End of line resister	<a href="#">Buy now</a>
4	<a href="#">6X68559050</a> Control unit assembly	<a href="#">Buy now</a>
5	<a href="#">6X94821110</a> Housing,1	<a href="#">Buy now</a>
6	<a href="#">6X94821B00</a> Housing,3	<a href="#">Buy now</a>
7	<a href="#">9010506106</a> Bolt, flange	<a href="#">Buy now</a>
8	<a href="#">6X94812800</a> Screw 2	<a href="#">Buy now</a>
9	<a href="#">9015706M13</a> Screw, pan head(6h4)	<a href="#">Buy now</a>
10	<a href="#">9578006300</a> Nut, nylon (6g1)	<a href="#">Buy now</a>
11	<a href="#">90201065F1</a> Washer, plate(j41)	<a href="#">Buy now</a>

## Dec 5 (Twin/Main St)

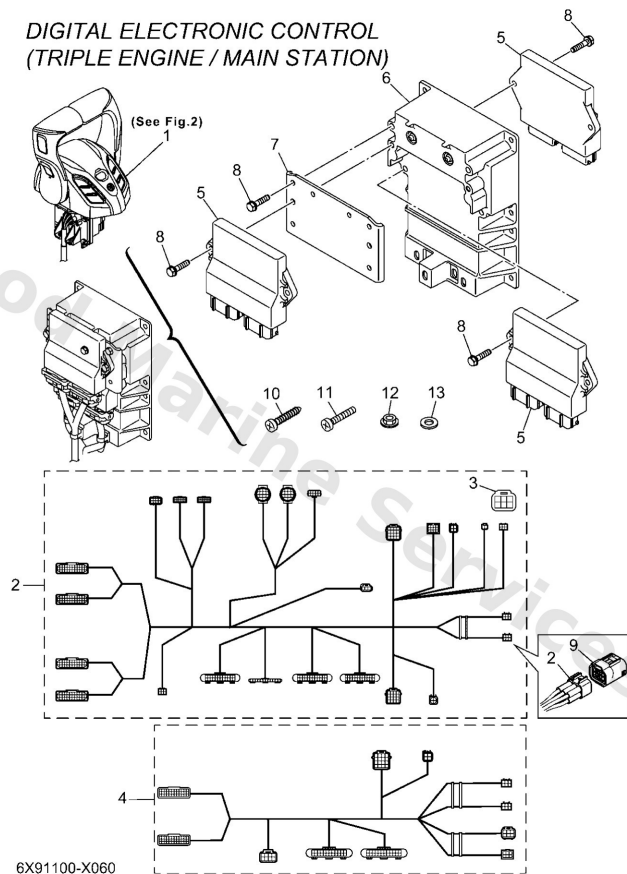
### DIGITAL ELECTRONIC CONTROL (TWIN ENGINE / MAIN STATION)



Ref	Part	
1	<a href="#">6X948A0210</a> Remote Control Box <b>NOT FOR SALE</b>	<a href="#">Buy now</a>
2	<a href="#">6X98258070</a> Wire harness assembly 2	<a href="#">Buy now</a>
3	<a href="#">6Y88537101</a> End of line resister	<a href="#">Buy now</a>
4	<a href="#">6X68559050</a> Control unit assembly	<a href="#">Buy now</a>
5	<a href="#">6X94821A10</a> Housing, 2	<a href="#">Buy now</a>
6	<a href="#">6X94817100</a> Bolt	<a href="#">Buy now</a>
8	<a href="#">6X94812800</a> Screw 2	<a href="#">Buy now</a>
9	<a href="#">9015706M13</a> Screw, pan head(6h4)	<a href="#">Buy now</a>
10	<a href="#">9578006300</a> Nut, nylon (6g1)	<a href="#">Buy now</a>
11	<a href="#">90201065F1</a> Washer, plate(j41)	<a href="#">Buy now</a>

## Dec 6 (Triple/Main St)

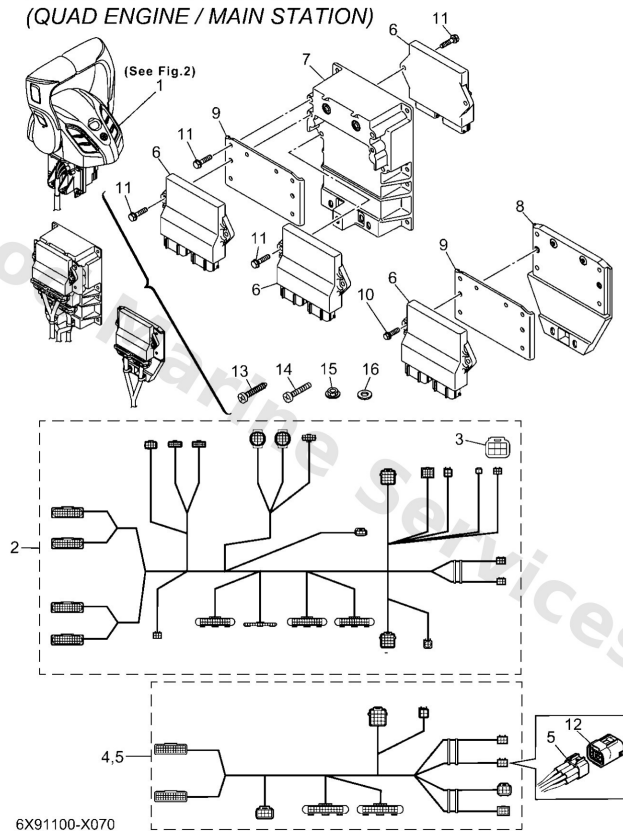
### DIGITAL ELECTRONIC CONTROL (TRIPLE ENGINE / MAIN STATION)



Ref	Part	
1	<a href="#">6X948A0210</a> Remote Control Box <b>NOT FOR SALE</b>	<a href="#">Buy now</a>
2	<a href="#">6X98258070</a> Wire harness assembly 2	<a href="#">Buy now</a>
3	<a href="#">6Y88537101</a> End of line resister	<a href="#">Buy now</a>
4	<a href="#">6X98258080</a> Wire harness assembly 2	<a href="#">Buy now</a>
5	<a href="#">6X68559050</a> Control unit assembly	<a href="#">Buy now</a>
6	<a href="#">6X94821A10</a> Housing, 2	<a href="#">Buy now</a>
7	<a href="#">6X94821B00</a> Housing,3	<a href="#">Buy now</a>
8	<a href="#">6X94817100</a> Bolt	<a href="#">Buy now</a>
10	<a href="#">6X94812800</a> Screw 2	<a href="#">Buy now</a>
11	<a href="#">9015706M13</a> Screw, pan head(6h4)	<a href="#">Buy now</a>
12	<a href="#">9578006300</a> Nut, nylon (6g1)	<a href="#">Buy now</a>
13	<a href="#">90201065F1</a> Washer, plate(j41)	<a href="#">Buy now</a>

## Dec 7 (Quad/Main St)

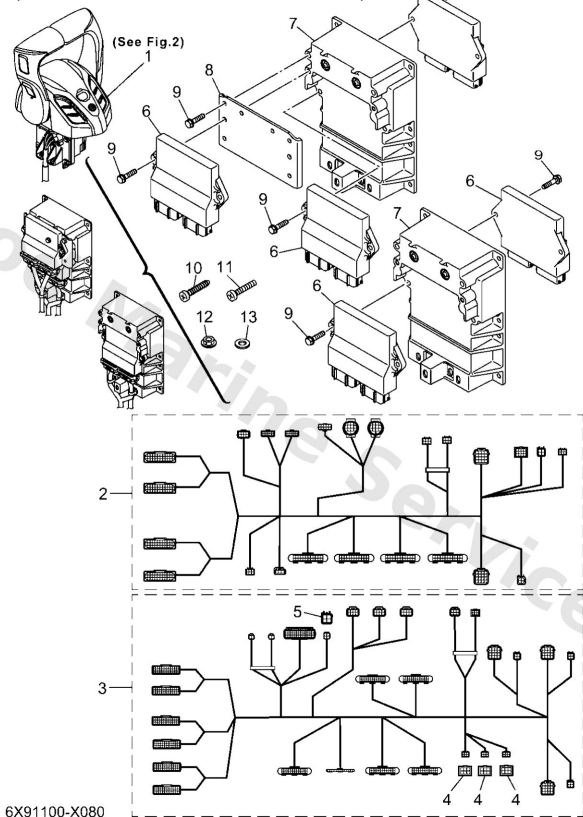
### DIGITAL ELECTRONIC CONTROL (QUAD ENGINE / MAIN STATION)



Ref	Part	
1	<a href="#">6X948A0210</a> Remote Control Box <b>NOT FOR SALE</b>	<a href="#">Buy now</a>
2	<a href="#">6X98258070</a> Wire harness assembly 2	<a href="#">Buy now</a>
3	<a href="#">6Y88537101</a> End of line resistor	<a href="#">Buy now</a>
4	<a href="#">6X98258080</a> Wire harness assembly 2	<a href="#">Buy now</a>
5	<a href="#">6X98258090</a> Wire harness assembly 2	<a href="#">Buy now</a>
6	<a href="#">6X68559050</a> Control unit assembly	<a href="#">Buy now</a>
7	<a href="#">6X94821A10</a> Housing, 2	<a href="#">Buy now</a>
8	<a href="#">6X94821110</a> Housing,1	<a href="#">Buy now</a>
9	<a href="#">6X94821B00</a> Housing,3	<a href="#">Buy now</a>
10	<a href="#">9010506106</a> Bolt, flange	<a href="#">Buy now</a>
11	<a href="#">6X94817100</a> Bolt	<a href="#">Buy now</a>
13	<a href="#">6X94812800</a> Screw 2	<a href="#">Buy now</a>
14	<a href="#">9015706M13</a> Screw, pan head(6h4)	<a href="#">Buy now</a>
15	<a href="#">9578006300</a> Nut, nylon (6g1)	<a href="#">Buy now</a>
16	<a href="#">90201065F1</a> Washer, plate(j41)	<a href="#">Buy now</a>

## Dec 8 (Quint/Main St)

### DIGITAL ELECTRONIC CONTROL (QUINT ENGINE / MAIN STATION)

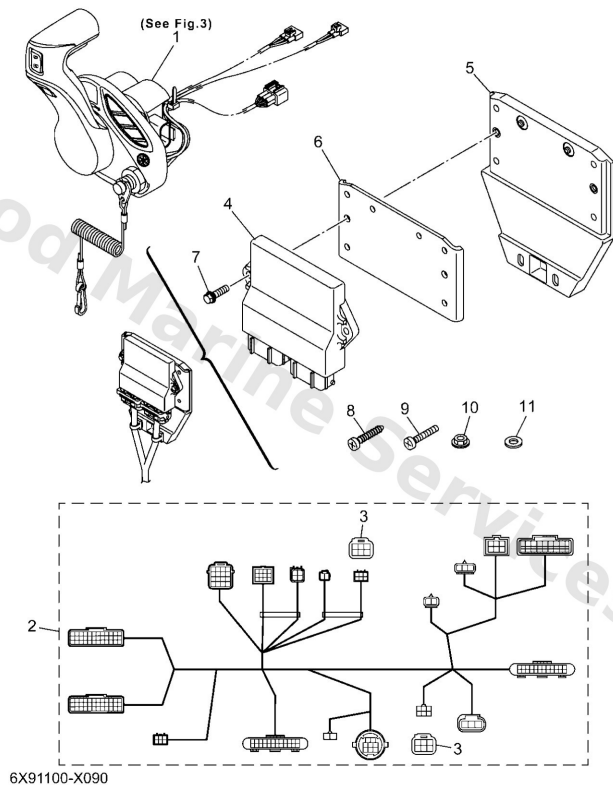


Ref	Part	
1	<a href="#">6X948A0210</a> Remote Control Box <b>NOT FOR SALE</b>	<a href="#">Buy now</a>
2	<a href="#">6X982580A0</a> Wire harness assembly 2	<a href="#">Buy now</a>
3	<a href="#">6X982580B0</a> Wire harness assembly 2	<a href="#">Buy now</a>
4	<a href="#">6Y88537101</a> End of line resister	<a href="#">Buy now</a>
5	<a href="#">6X68198000</a> Diode assembly	<a href="#">Buy now</a>
6	<a href="#">6X68559050</a> Control unit assembly	<a href="#">Buy now</a>
7	<a href="#">6X94821A10</a> Housing, 2	<a href="#">Buy now</a>
8	<a href="#">6X94821B00</a> Housing,3	<a href="#">Buy now</a>
9	<a href="#">6X94817100</a> Bolt	<a href="#">Buy now</a>
10	<a href="#">6X94812800</a> Screw 2	<a href="#">Buy now</a>
11	<a href="#">9015706M13</a> Screw, pan head(6h4)	<a href="#">Buy now</a>
12	<a href="#">9578006300</a> Nut, nylon (6g1)	<a href="#">Buy now</a>
13	<a href="#">90201065F1</a> Washer, plate(j41)	<a href="#">Buy now</a>



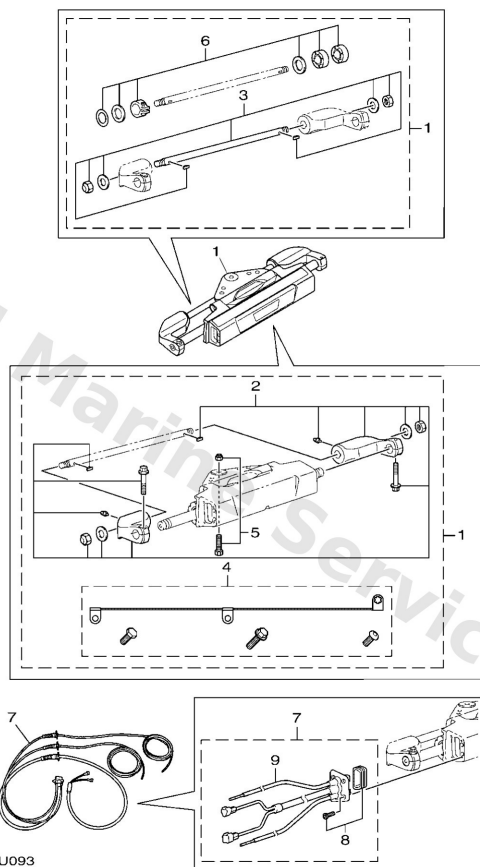
## Dec 9 (Flush Mount/Main St)

### DIGITAL ELECTRONIC CONTROL (FLUSH SIDE MOUNT/ MAIN STATION)



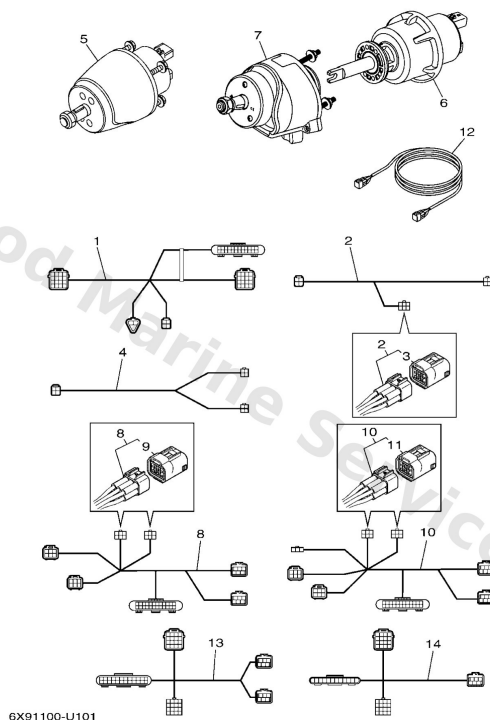
Ref	Part	
1	<a href="#">6X948A0001</a> Remote Control Box assembly 1 NOT FOR SALE	<a href="#">Buy now</a>
2	<a href="#">6X982580H0</a> Wire harness assembly 2	<a href="#">Buy now</a>
3	<a href="#">6Y88537101</a> End of line resister	<a href="#">Buy now</a>
4	<a href="#">6X68559050</a> Control unit assembly	<a href="#">Buy now</a>
5	<a href="#">6X94821110</a> Housing,1	<a href="#">Buy now</a>
6	<a href="#">6X94821B00</a> Housing,3	<a href="#">Buy now</a>
7	<a href="#">9010506106</a> Bolt, flange	<a href="#">Buy now</a>
8	<a href="#">6X94812800</a> Screw 2	<a href="#">Buy now</a>
9	<a href="#">9015706M13</a> Screw, pan head(6h4)	<a href="#">Buy now</a>
10	<a href="#">9578006300</a> Nut, nylon (6g1)	<a href="#">Buy now</a>
11	<a href="#">90201065F1</a> Washer, plate(j41)	<a href="#">Buy now</a>

# Des 1

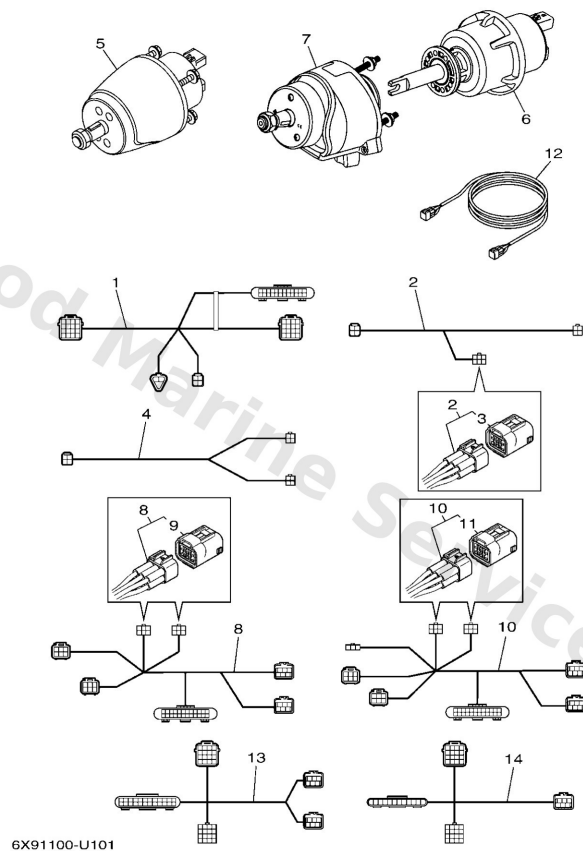


Ref	Part	
1	<a href="#">6X94240111</a> Bolt-on des kit	<a href="#">Buy now</a>
2	<a href="#">6X94240200</a> Repair kit, 1	<a href="#">Buy now</a>
3	<a href="#">6X94240300</a> Repair kit, 2	<a href="#">Buy now</a>
4	<a href="#">6X94240400</a> Repair kit, 3	<a href="#">Buy now</a>
5	<a href="#">6X94240500</a> Repair kit, 4	<a href="#">Buy now</a>
6	<a href="#">6X94240600</a> Repair kit, 5	<a href="#">Buy now</a>
7	<a href="#">6X9438A000</a> Steering actuator harness 2.4m UR 2.4M-8FT	<a href="#">Buy now</a>
7	<a href="#">6X9438A010</a> Steering actuator harness 4.5m UR 4.5M-15FT	<a href="#">Buy now</a>
7	<a href="#">6X9438A020</a> Steer act harness 2.4m u-shape UR 2.4M-8FT	<a href="#">Buy now</a>
7	<a href="#">6X9438A030</a> Steer act harness 4.5m u-shape UR 4.5M-15FT	<a href="#">Buy now</a>
7	<a href="#">6X9438A040</a> Str act harn 2.4m no blkhd fit UR 2.4M-8FT NO BULKHEAD	<a href="#">Buy now</a>
8	<a href="#">6X94240700</a> Repair kit, 6	<a href="#">Buy now</a>
9	<a href="#">6X94240800</a> - EXCEPT FOR 6X9-438A0-40	<a href="#">Buy now</a>

## Des 2

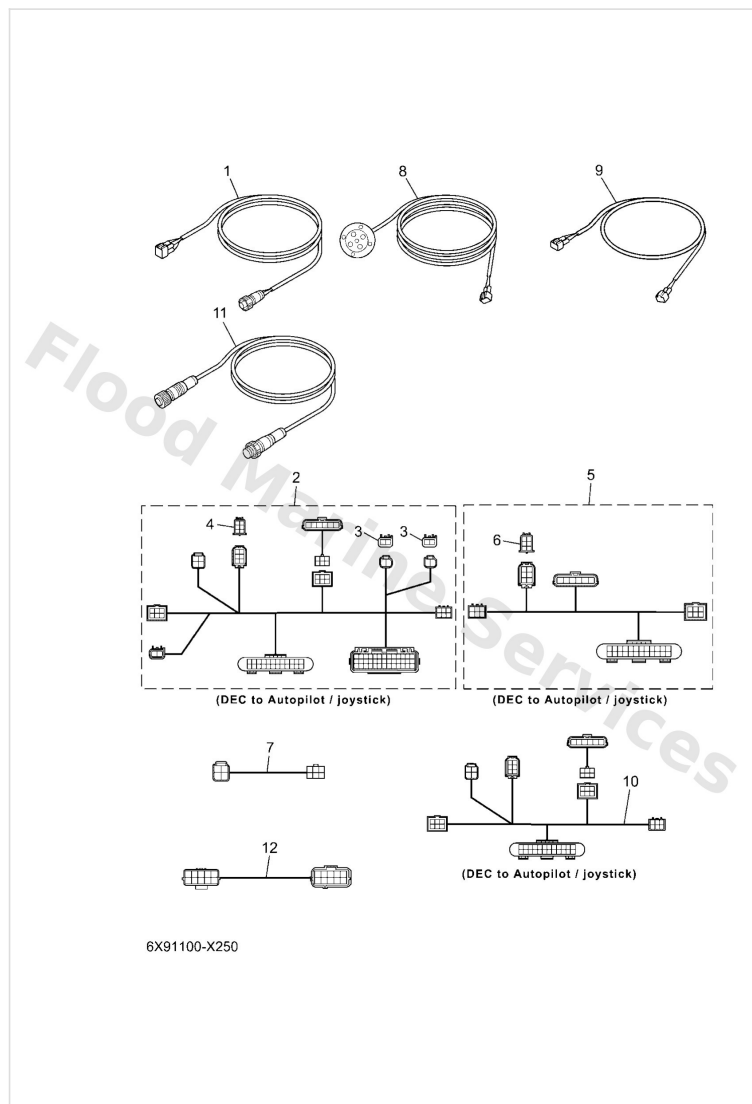


Ref	Part	
1	<a href="#">6X98258A90</a> Extn.wire harness 2 SCU to 16-PIN	<a href="#">Buy now</a>
2	<a href="#">6GR8111500</a> Scu link harness p/s 5ft UR PORT/STBD ENGINE	<a href="#">Buy now</a>
2	<a href="#">6GR8111510</a> Scu link harness p/s 10ft UR PORT/STBD ENGINE	<a href="#">Buy now</a>
2	<a href="#">6X98111500</a> Scu link harness 0.3m-1ft p/s UR PORT/STBD ENGINE	<a href="#">Buy now</a>
3	<a href="#">6Y88537101</a> End of line resistor	<a href="#">Buy now</a>
4	<a href="#">6GR8111520</a> Scu link harness center 5ft UR CENTER ENGINE	<a href="#">Buy now</a>
4	<a href="#">6GR8111530</a> Scu link harness center 10ft UR CENTER ENGINE	<a href="#">Buy now</a>
4	<a href="#">6X98111510</a> Scu link harness 0.3m-1ft (c) UR CENTER ENGINE	<a href="#">Buy now</a>
5	<a href="#">6X9615A010</a> Compact helm kit	<a href="#">Buy now</a>
6	<a href="#">6GR615A000</a> Helm unit assembly tilt (2) ASK TO MARINE DIV	<a href="#">Buy now</a>
7	<a href="#">6GR6154A00</a> Tilt Helm Unit (1) ASK TO MARINE DIV	<a href="#">Buy now</a>
8	<a href="#">6X98258AA1</a> Helm Harness 0.9M-3Ft SINGLE ENGINE (2ND ST)	<a href="#">Buy now</a>
10	<a href="#">6X98258AB1</a> Helm harness 2nd station 0.9m MULTIPLE ENGINES (2ND ST)	<a href="#">Buy now</a>
12	<a href="#">6X68258A91</a> 16P Dbw Harness 1.5M-5Ft 1.5M-5FT MAIN-HARNESS (16P)	<a href="#">Buy now</a>
13	<a href="#">6GR8258A01</a> Helm harness (main/single 0.9m UR SINGLE ENGINE (MAIN ST)	<a href="#">Buy now</a>



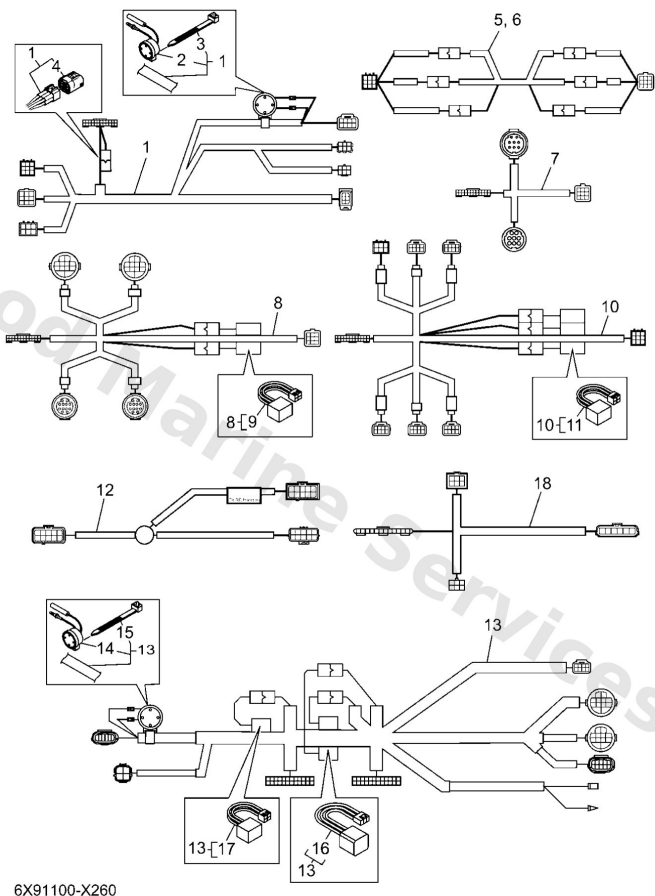
Ref	Part	
13	<a href="#">6GR8258A41</a> Helm harness (main/single)1.8m UR SINGLE ENGINE (MAIN ST)	<a href="#">Buy now</a>
14	<a href="#">6GR8258A11</a> Helm harness multi engines 0.9 UR MULTIPLE ENGINES (MAIN ST)	<a href="#">Buy now</a>
14	<a href="#">6GR8258A51</a> Helm harness multi engines 1.8 UR MULTIPLE ENGINES (MAIN ST)	<a href="#">Buy now</a>
14	<a href="#">6GR8258A61</a> Helm harness multi engines 2.7 UR MULTIPLE ENGINES (MAIN ST)	<a href="#">Buy now</a>

# Electrical Wire Harness 1



Ref	Part	
1	<a href="#">6YM8355300</a> Conversion harness cl5-pigtail	<a href="#">Buy now</a>
2	<a href="#">6X98238601</a> Extension wire harness	<a href="#">Buy now</a>
3	<a href="#">68V8258210</a> Cap 1 (2p)	<a href="#">Buy now</a>
4	<a href="#">6X98258220</a> Cap 1 (6p)	<a href="#">Buy now</a>
5	<a href="#">6X98238610</a> Extension, wire harness 2ND STATION	<a href="#">Buy now</a>
7	<a href="#">6X98355310</a> Wire, lead 6PIN-4PIN (MAIN BUS-PIGTAIL)	<a href="#">Buy now</a>
8	<a href="#">6E58372002</a> L.e.d ass'y	<a href="#">Buy now</a>
9	<a href="#">6X98258620</a> Extension prop lights 6m UR 6.1M-20FT	<a href="#">Buy now</a>
9	<a href="#">6X98258630</a> Extension prop lights 9m UR 9.1M-30FT	<a href="#">Buy now</a>
9	<a href="#">6X98258640</a> Extension prop lights 12m UR 12.2M-40FT	<a href="#">Buy now</a>
10	<a href="#">6X98238620</a> Bcu harness (quint/main st) FOR QUINT ENGINE	<a href="#">Buy now</a>
11	<a href="#">6YG8252100</a> Wire, lead	<a href="#">Buy now</a>
12	<a href="#">6X98258600</a> Extension, wire harness UR	<a href="#">Buy now</a>
12	<a href="#">6X98258610</a> Extension, wire harness UR	<a href="#">Buy now</a>

## Electrical Wire Harness 2



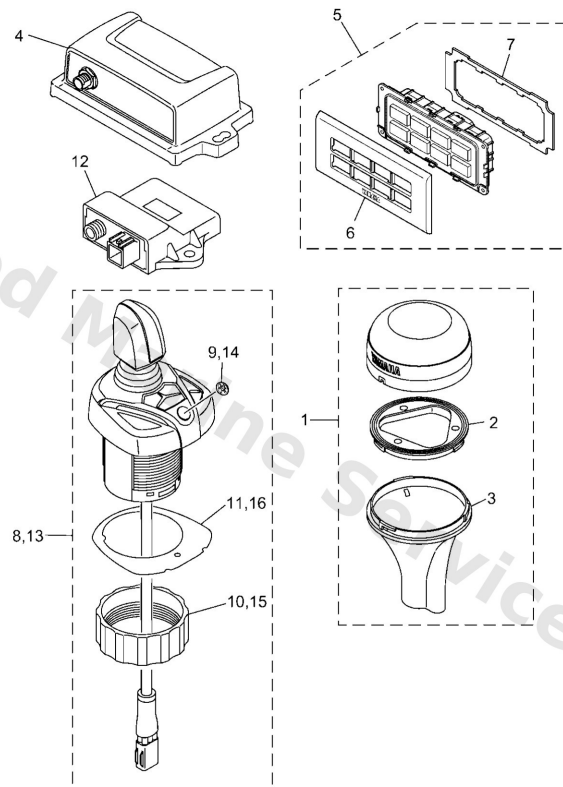
Ref	Part	
1	<a href="#">6X982580G0</a> Wire harness assembly.,2	<a href="#">Buy now</a>
2	<a href="#">7038338311</a> Buzzer	<a href="#">Buy now</a>
3	<a href="#">9046513M39</a> Clamp(6e8)	<a href="#">Buy now</a>
4	<a href="#">6Y88537101</a> End of line resistor	<a href="#">Buy now</a>
5	<a href="#">6X98355370</a> Extension harness 7m (22ft)	<a href="#">Buy now</a>
6	<a href="#">6X98355380</a> Extention harness 32ft (10m)	<a href="#">Buy now</a>
7	<a href="#">6X98258AC0</a> Switch split harness single	<a href="#">Buy now</a>
8	<a href="#">6X98258AD0</a> Switch split harness twin	<a href="#">Buy now</a>
9	<a href="#">6X68198000</a> Diode assembly	<a href="#">Buy now</a>
10	<a href="#">6X98258AE0</a> Switch split harness triple	<a href="#">Buy now</a>
12	<a href="#">6X98258AF0</a> Extn.,wire hrns (main stn) UR	<a href="#">Buy now</a>
12	<a href="#">6X98258AG0</a> Extn.,wire hrns (2nd stn) UR	<a href="#">Buy now</a>
13	<a href="#">6X98271650</a> Cord switch	<a href="#">Buy now</a>
16	<a href="#">6X98195000</a> Relay assembly	<a href="#">Buy now</a>
18	<a href="#">6X98355390</a> Wire, lead	<a href="#">Buy now</a>

# Immobilizer Kit

6X91100-U180

Ref	Part	
1	<a href="#">6X98626003</a> Remote control unit assembly UR RADIO FREQUENCY 433MHZ	<a href="#">Buy now</a>
1	<a href="#">6X98626013</a> Remote control unit assembly UR RADIO FREQUENCY 315MHZ	<a href="#">Buy now</a>
2	<a href="#">6X98626101</a> Xmtr. comp. FOR 6X9-86260-03	<a href="#">Buy now</a>
2	<a href="#">6X98626111</a> Xmtr. Comp. FOR 6X9-86260-13	<a href="#">Buy now</a>
3	<a href="#">6X98626700</a> Case complete 1	<a href="#">Buy now</a>
4	<a href="#">6X98194800</a> Bracket	<a href="#">Buy now</a>
5	<a href="#">6X98554601</a> Band	<a href="#">Buy now</a>
6	<a href="#">6X98250910</a> Wire, sub lead	<a href="#">Buy now</a>
7	<a href="#">7038338311</a> Buzzer	<a href="#">Buy now</a>
8	<a href="#">9588006016</a> Bolt, flange(jl8)	<a href="#">Buy now</a>

## Joystick And Autopilot

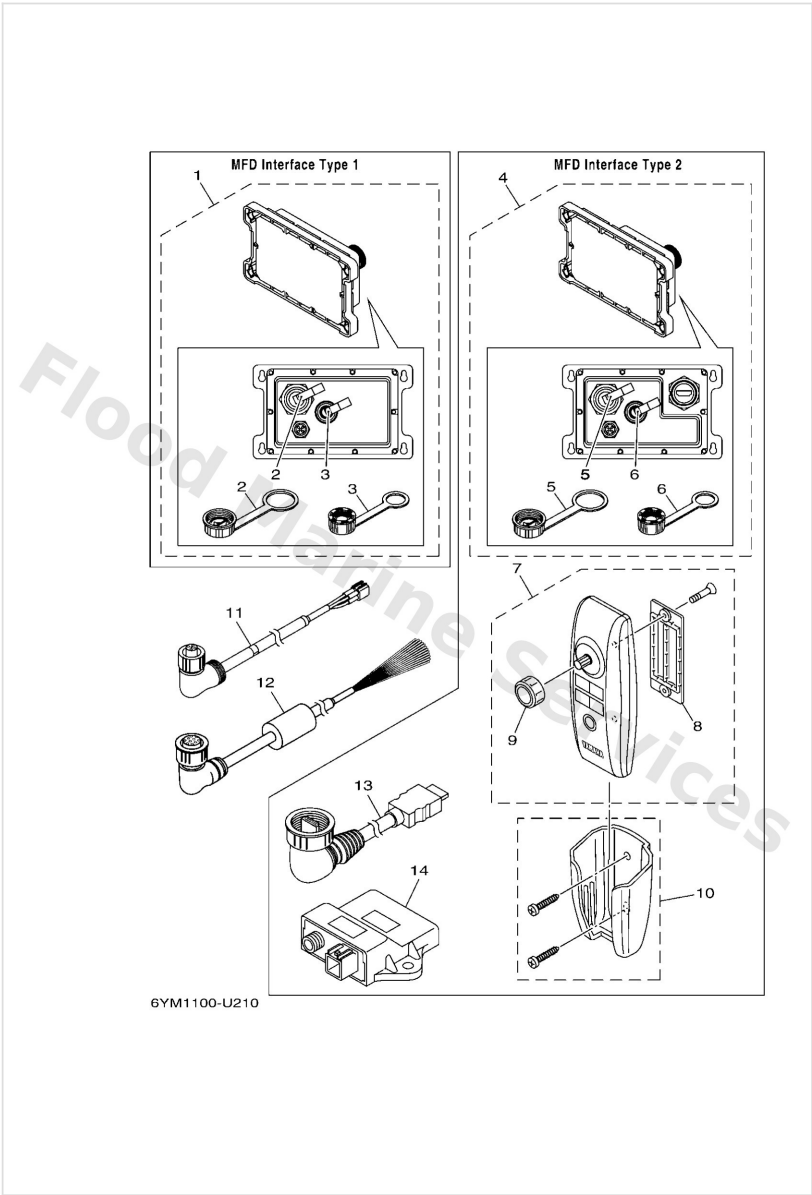


6X91100-X240

Ref	Part	
1	<a href="#">6X98810702</a> Gps unit	<a href="#">Buy now</a>
2	<a href="#">6X98252H00</a> Plate, holder	<a href="#">Buy now</a>
3	<a href="#">6X98255H00</a> Holder, socket	<a href="#">Buy now</a>
4	<a href="#">6X98A41001</a> Heading Sensor	<a href="#">Buy now</a>
5	<a href="#">6X98253V01</a> Control panel assembly	<a href="#">Buy now</a>
6	<a href="#">6X98257180</a> Panel, switch	<a href="#">Buy now</a>
7	<a href="#">6X92248080</a> Seal assembly	<a href="#">Buy now</a>
8	<a href="#">6X9482A002</a> Joystick assembly multicolor ASK TO MARINE DIV	<a href="#">Buy now</a>
9	<a href="#">6X94269700</a> Tuning fork mark	<a href="#">Buy now</a>
10	<a href="#">6X94815600</a> Nut 1	<a href="#">Buy now</a>
11	<a href="#">6X94823A00</a> Packing	<a href="#">Buy now</a>
12	<a href="#">6YG8A2D013</a> Gateway FOR OTHER COMPATIBLE MFD	<a href="#">Buy now</a>
13	<a href="#">6X9482A010</a> Joystick assembly BLACK ASK TO MARINE DIV	<a href="#">Buy now</a>

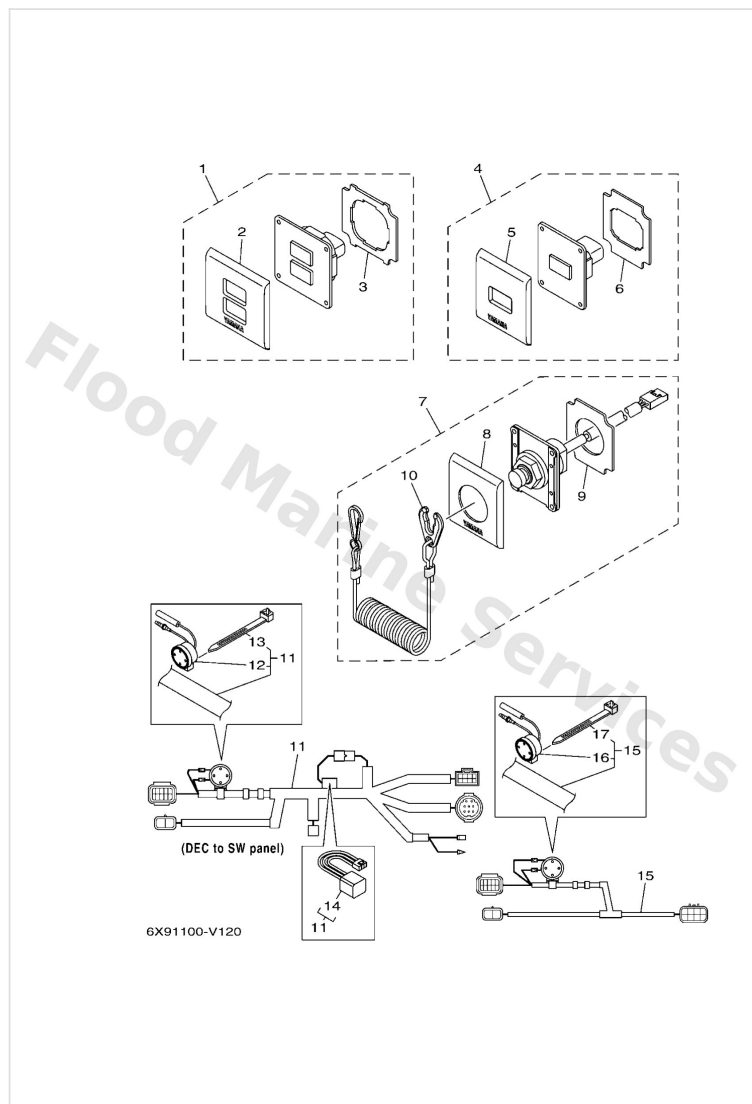


## Mfd Interface



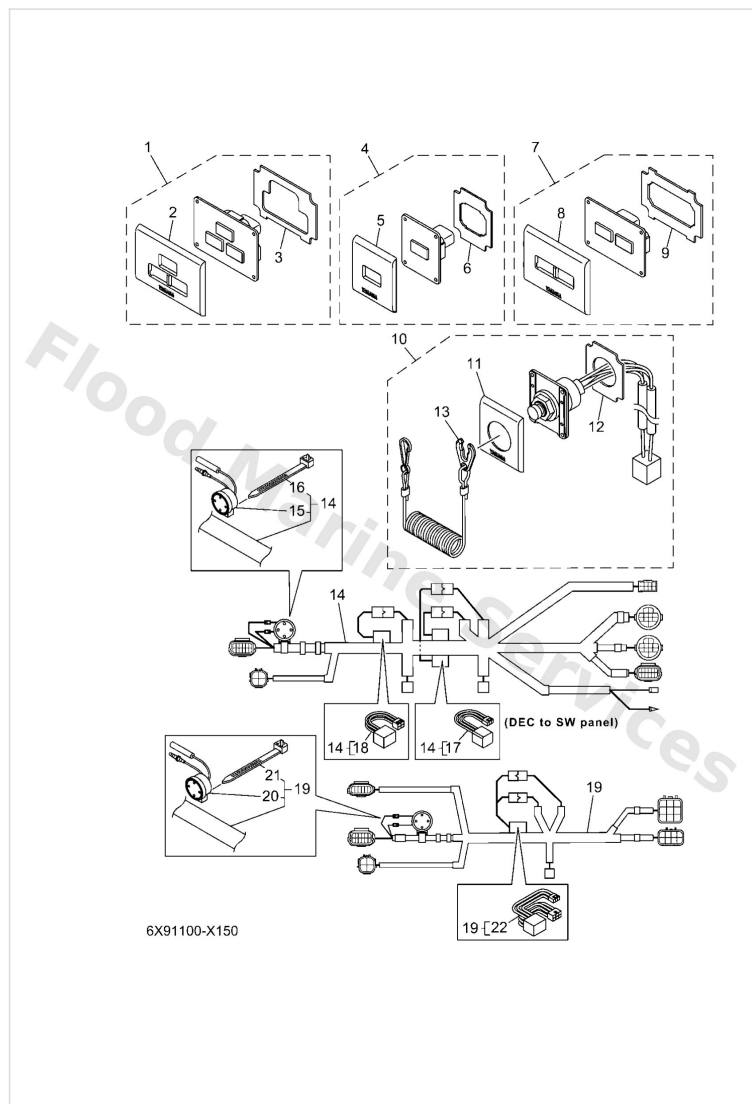
Ref	Part	
1	<a href="#">6YM8A2D011</a> Mfd Interface COMPATIBLE GARMIN MFD	<a href="#">Buy now</a>
2	<a href="#">6YM8395600</a> Cap 1	<a href="#">Buy now</a>
3	<a href="#">6YD8395700</a> Cap 2	<a href="#">Buy now</a>
4	<a href="#">6YM8A2D004</a> Mfd Interface OTHER COMPATIBLE MFD WITH Wi-F	<a href="#">Buy now</a>
7	<a href="#">6YM8626101</a> Xmtr. Comp. FOR 6YM-8A2D0-04 WITH Wi-Fi	<a href="#">Buy now</a>
8	<a href="#">6YM8212900</a> Cover, Battery	<a href="#">Buy now</a>
9	<a href="#">6YM8432M00</a> -	<a href="#">Buy now</a>
10	<a href="#">6YM60BJ000</a> Cradle assembly	<a href="#">Buy now</a>
11	<a href="#">6YM8355310</a> Wire, lead	<a href="#">Buy now</a>
12	<a href="#">6YM8356N00</a> Wire, lead	<a href="#">Buy now</a>
13	<a href="#">6YM8533A00</a> - FOR OTHER COMPATIBLE MFD	<a href="#">Buy now</a>
14	<a href="#">6YG8A2D013</a> Gateway FOR OTHER COMPATIBLE MFD	<a href="#">Buy now</a>

## Switch & Panel 1 (Eks, Single)



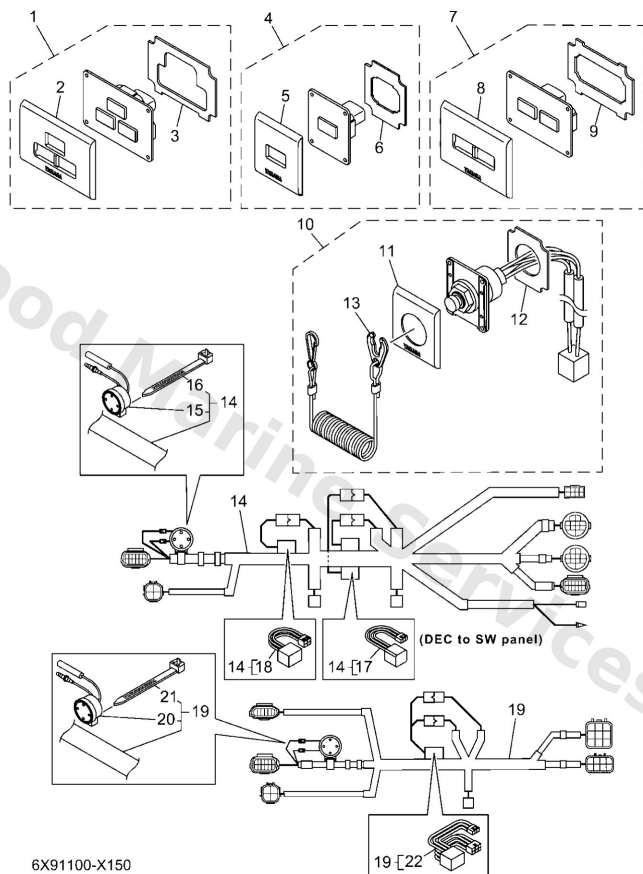
Ref	Part	
1	<a href="#">6X98257001</a> Panel switch assembly MAIN STATION	<a href="#">Buy now</a>
2	<a href="#">6X98257100</a> Panel, switch	<a href="#">Buy now</a>
3	<a href="#">6X92248000</a> Seal assembly	<a href="#">Buy now</a>
4	<a href="#">6X982570B1</a> Power sw start/stop 2nd st 2ND STATION	<a href="#">Buy now</a>
5	<a href="#">6X98257120</a> Panel, switch	<a href="#">Buy now</a>
6	<a href="#">6X92248020</a> Seal assembly	<a href="#">Buy now</a>
7	<a href="#">6X98257070</a> Panel switch assembly MAIN STATION & 2ND STATION	<a href="#">Buy now</a>
8	<a href="#">6X98257170</a> Panel, switch	<a href="#">Buy now</a>
9	<a href="#">6X92248070</a> Seal assembly	<a href="#">Buy now</a>
10	<a href="#">6828255600</a> Lanyard, stop switch	<a href="#">Buy now</a>
11	<a href="#">6X98271621</a> Cord switch MAIN STATION	<a href="#">Buy now</a>
12	<a href="#">7038338311</a> Buzzer	<a href="#">Buy now</a>
13	<a href="#">9046513M39</a> Clamp(6e8)	<a href="#">Buy now</a>
14	<a href="#">6X98195000</a> Relay assembly	<a href="#">Buy now</a>
15	<a href="#">6X98271660</a> Cord switch 2ND STATION	<a href="#">Buy now</a>

## Switch & Panel 2 (Eks, Twin)



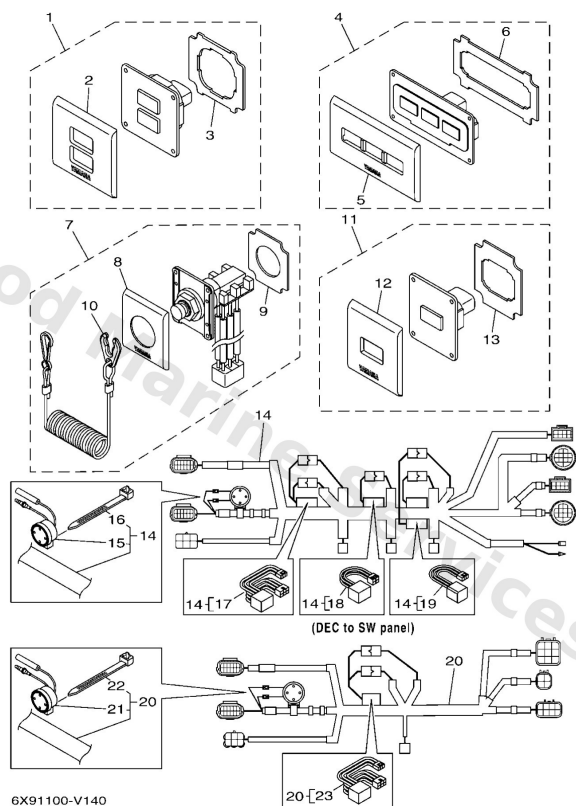
Ref	Part	
1	<a href="#">6X98257011</a> Panel switch assembly MAIN STATION	<a href="#">Buy now</a>
2	<a href="#">6X98257110</a> Panel, switch	<a href="#">Buy now</a>
3	<a href="#">6X92248010</a> Seal assembly	<a href="#">Buy now</a>
4	<a href="#">6X982570B1</a> Power sw start/stop 2nd st 2ND STATION	<a href="#">Buy now</a>
5	<a href="#">6X98257120</a> Panel, switch	<a href="#">Buy now</a>
6	<a href="#">6X92248020</a> Seal assembly	<a href="#">Buy now</a>
7	<a href="#">6X98257031</a> Twin panel p+s start stop 2ND STATION	<a href="#">Buy now</a>
8	<a href="#">6X98257130</a> Panel, switch	<a href="#">Buy now</a>
9	<a href="#">6X92248030</a> Seal assembly	<a href="#">Buy now</a>
10	<a href="#">6X98257080</a> Panel switch assembly MAIN STATION & 2ND STATION	<a href="#">Buy now</a>
11	<a href="#">6X98257170</a> Panel, switch	<a href="#">Buy now</a>
12	<a href="#">6X92248070</a> Seal assembly	<a href="#">Buy now</a>
13	<a href="#">6828255600</a> Lanyard, stop switch	<a href="#">Buy now</a>
14	<a href="#">6X98271632</a> Cord switch MAIN STATION	<a href="#">Buy now</a>
15	<a href="#">7038338311</a> Buzzer	<a href="#">Buy now</a>

## Switch & Panel 2 (Eks, Twin)



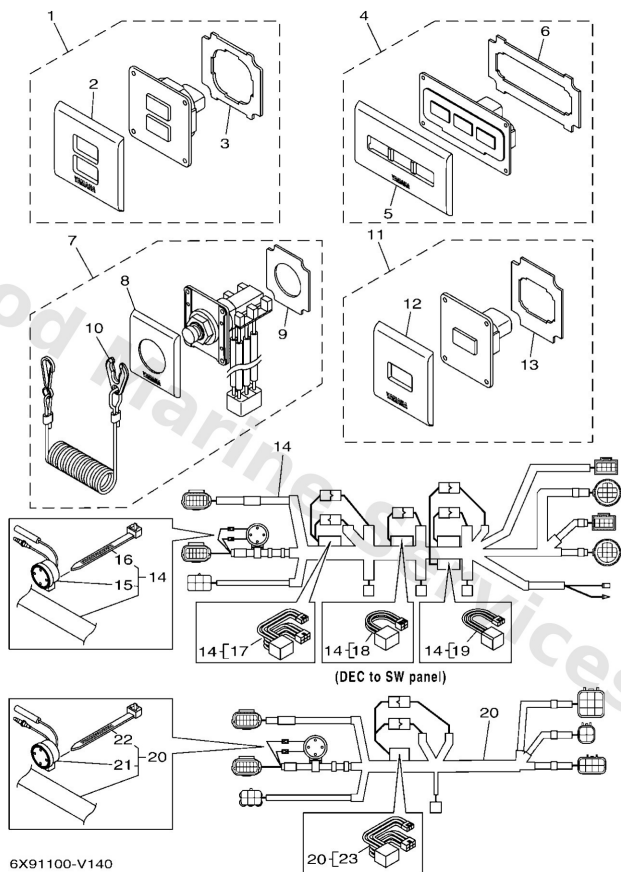
Ref	Part	
16	<a href="#">9046513M39</a> Clamp(6e8)	<a href="#">Buy now</a>
17	<a href="#">6X98195000</a> Relay assembly	<a href="#">Buy now</a>
18	<a href="#">6X68198000</a> Diode assembly	<a href="#">Buy now</a>
19	<a href="#">6X98271671</a> Eks harness <b>2ND STATION</b>	<a href="#">Buy now</a>
22	<a href="#">6X68198010</a> Diode assembly	<a href="#">Buy now</a>

## Switch & Panel 3 (Eks, Triple)



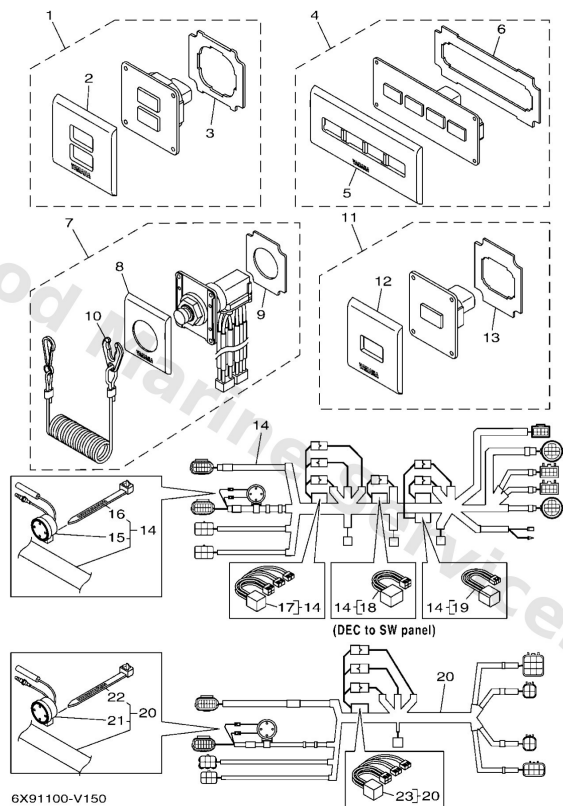
Ref	Part	
1	<a href="#">6X98257000</a> Panel switch assembly MAIN STATION	<a href="#">Buy now</a>
2	<a href="#">6X98257100</a> Panel, switch	<a href="#">Buy now</a>
3	<a href="#">6X92248000</a> Seal assembly	<a href="#">Buy now</a>
4	<a href="#">6X98257041</a> Panel switch assembly MAIN & 2ND STATION	<a href="#">Buy now</a>
5	<a href="#">6X98257140</a> Panel, switch	<a href="#">Buy now</a>
6	<a href="#">6X92248040</a> Seal assembly	<a href="#">Buy now</a>
7	<a href="#">6X982570C0</a> Panel switch assembly MAIN STATION & 2ND STATION	<a href="#">Buy now</a>
8	<a href="#">6X98257170</a> Panel, switch	<a href="#">Buy now</a>
9	<a href="#">6X92248070</a> Seal assembly	<a href="#">Buy now</a>
10	<a href="#">6828255600</a> Lanyard, stop switch	<a href="#">Buy now</a>
11	<a href="#">6X982570B1</a> Power sw start/stop 2nd st 2ND STATION	<a href="#">Buy now</a>
12	<a href="#">6X98257120</a> Panel, switch	<a href="#">Buy now</a>
13	<a href="#">6X92248020</a> Seal assembly	<a href="#">Buy now</a>
14	<a href="#">6X98271641</a> Cord switch MAIN STATION	<a href="#">Buy now</a>
15	<a href="#">7038338311</a> Buzzer	<a href="#">Buy now</a>

## Switch & Panel 3 (Eks, Triple)



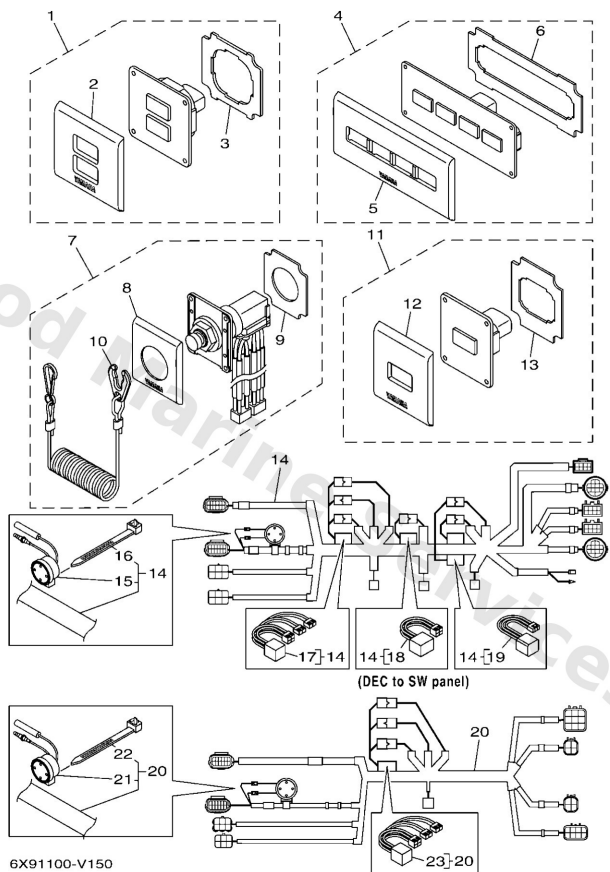
Ref	Part	
16	<a href="#">9046513M39</a> Clamp(6e8)	<a href="#">Buy now</a>
17	<a href="#">6X68198010</a> Diode assembly	<a href="#">Buy now</a>
18	<a href="#">6X68198000</a> Diode assembly	<a href="#">Buy now</a>
19	<a href="#">6X98195000</a> Relay assembly	<a href="#">Buy now</a>
20	<a href="#">6X98271680</a> Cord switch 2ND STATION	<a href="#">Buy now</a>

## Switch & Panel 4 (Eks, Quad)



Ref	Part	
1	<a href="#">6X98257000</a> Panel switch assembly MAIN STATION	<a href="#">Buy now</a>
2	<a href="#">6X98257100</a> Panel, switch	<a href="#">Buy now</a>
3	<a href="#">6X92248000</a> Seal assembly	<a href="#">Buy now</a>
4	<a href="#">6X98257051</a> Panel Switch assembly MAIN STATION & 2ND STATION	<a href="#">Buy now</a>
5	<a href="#">6X98257150</a> Panel, switch	<a href="#">Buy now</a>
6	<a href="#">6X92248050</a> Seal assembly	<a href="#">Buy now</a>
7	<a href="#">6X982570D0</a> Emergency stop switch MAIN STATION & 2ND STATION	<a href="#">Buy now</a>
8	<a href="#">6X98257170</a> Panel, switch	<a href="#">Buy now</a>
9	<a href="#">6X92248070</a> Seal assembly	<a href="#">Buy now</a>
10	<a href="#">6828255600</a> Lanyard, stop switch	<a href="#">Buy now</a>
11	<a href="#">6X982570B1</a> Power sw start/stop 2nd st 2ND STATION	<a href="#">Buy now</a>
12	<a href="#">6X98257120</a> Panel, switch	<a href="#">Buy now</a>
13	<a href="#">6X92248020</a> Seal assembly	<a href="#">Buy now</a>
14	<a href="#">6X98271691</a> Cord switch MAIN STATION	<a href="#">Buy now</a>
15	<a href="#">7038338311</a> Buzzer	<a href="#">Buy now</a>

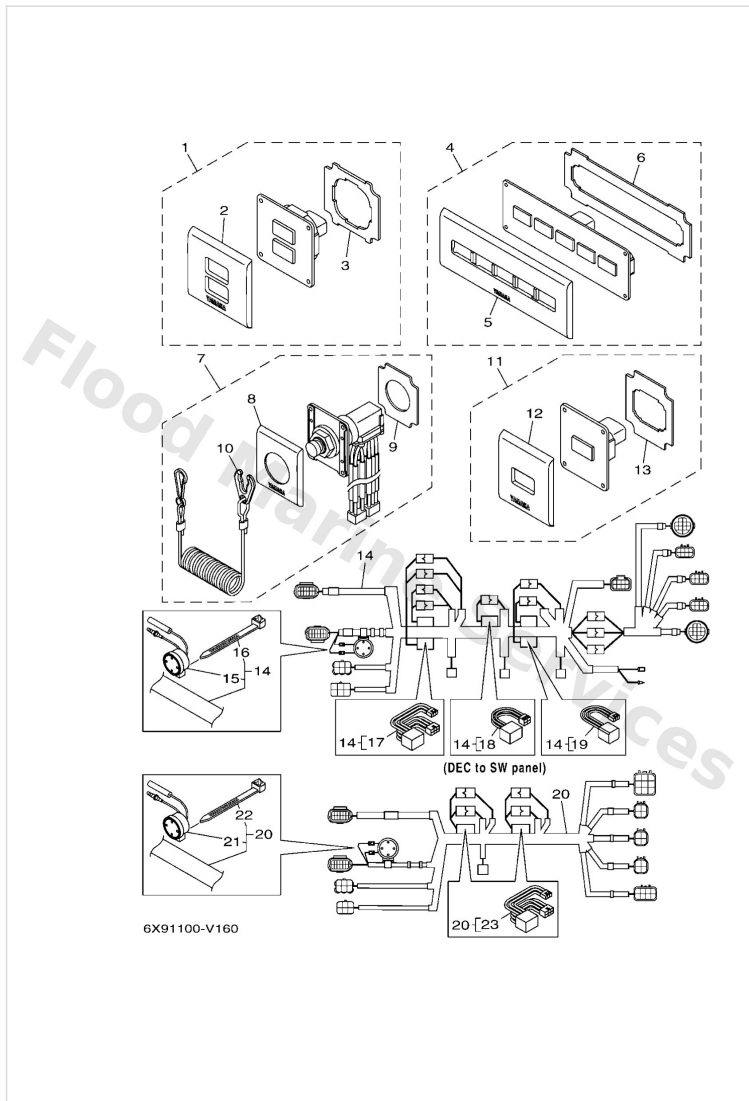
## Switch & Panel 4 (Eks, Quad)



Ref	Part	
16	<a href="#">9046513M39</a> Clamp(6e8)	<a href="#">Buy now</a>
17	<a href="#">6X68198040</a> Diode assembly	<a href="#">Buy now</a>
18	<a href="#">6X68198000</a> Diode assembly	<a href="#">Buy now</a>
19	<a href="#">6X98195000</a> Relay assembly	<a href="#">Buy now</a>
20	<a href="#">6X982716A0</a> Cord switch 2ND STATION	<a href="#">Buy now</a>

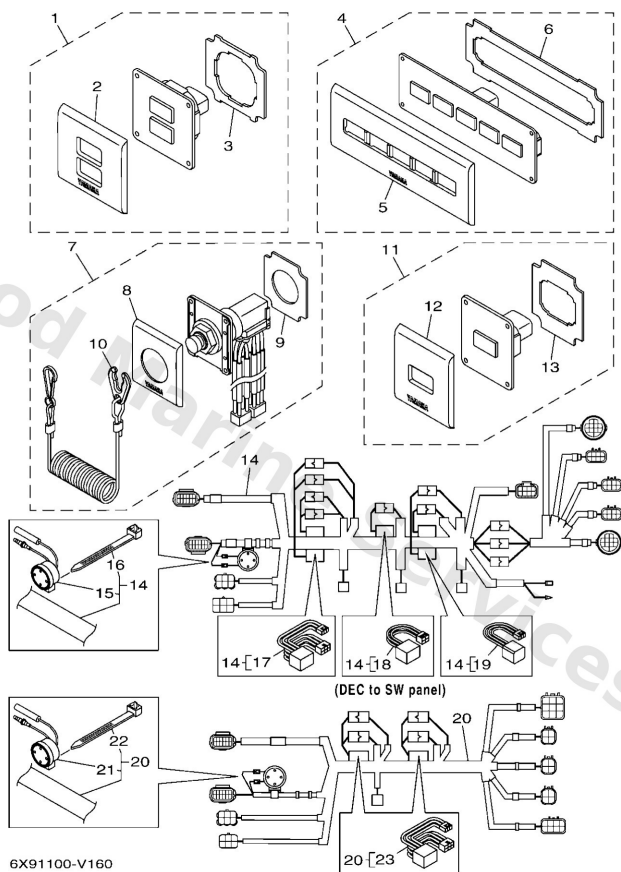


## Switch & Panel 5 (Eks, Quint)



Ref	Part	
1	<a href="#">6X98257000</a> Panel switch assembly MAIN STATION	<a href="#">Buy now</a>
2	<a href="#">6X98257100</a> Panel, switch	<a href="#">Buy now</a>
3	<a href="#">6X92248000</a> Seal assembly	<a href="#">Buy now</a>
4	<a href="#">6X98257061</a> Panel switch assembly MAIN STATION & 2ND STATION	<a href="#">Buy now</a>
5	<a href="#">6X98257160</a> Panel, switch	<a href="#">Buy now</a>
6	<a href="#">6X92248060</a> Seal assembly	<a href="#">Buy now</a>
7	<a href="#">6X982570D0</a> Emergency stop switch MAIN STATION & 2ND STATION	<a href="#">Buy now</a>
8	<a href="#">6X98257170</a> Panel, switch	<a href="#">Buy now</a>
9	<a href="#">6X92248070</a> Seal assembly	<a href="#">Buy now</a>
10	<a href="#">6828255600</a> Lanyard, stop switch	<a href="#">Buy now</a>
11	<a href="#">6X982570B1</a> Power sw start/stop 2nd st 2ND STATION	<a href="#">Buy now</a>
12	<a href="#">6X98257120</a> Panel, switch	<a href="#">Buy now</a>
13	<a href="#">6X92248020</a> Seal assembly	<a href="#">Buy now</a>
14	<a href="#">6X982716B0</a> Eks Harness MAIN STATION	<a href="#">Buy now</a>
15	<a href="#">7038338311</a> Buzzer	<a href="#">Buy now</a>

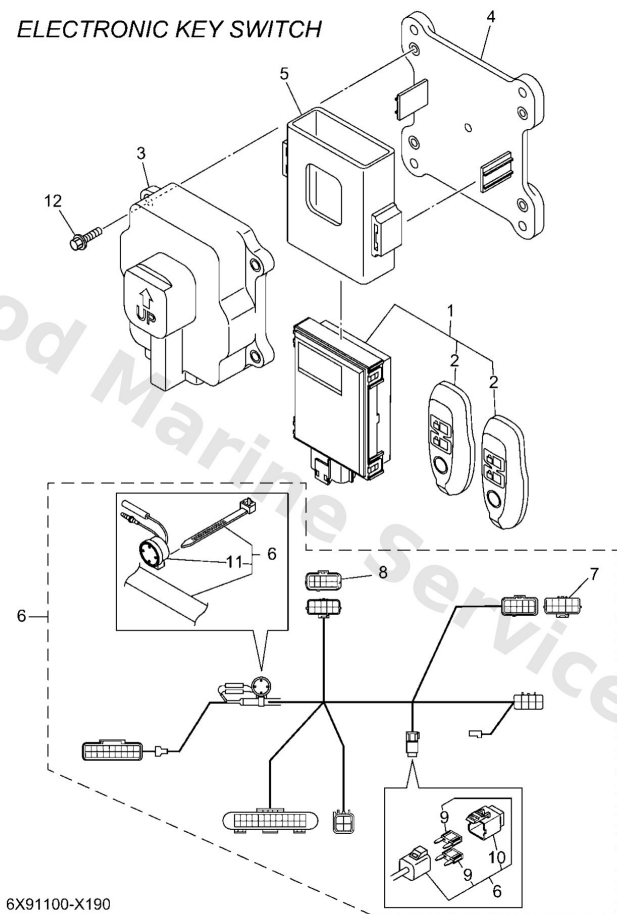
## Switch & Panel 5 (Eks, Quint)



Ref	Part	
16	<a href="#">9046513M39</a> Clamp(6e8)	<a href="#">Buy now</a>
17	<a href="#">6X68198010</a> Diode assembly	<a href="#">Buy now</a>
18	<a href="#">6X68198000</a> Diode assembly	<a href="#">Buy now</a>
19	<a href="#">6X98195000</a> Relay assembly	<a href="#">Buy now</a>
20	<a href="#">6X982716C0</a> Eks Harness 2ND STATION	<a href="#">Buy now</a>

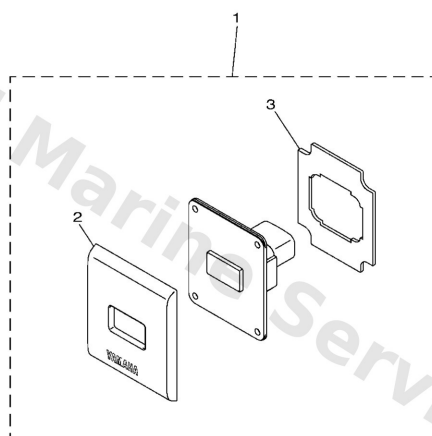
## Switch & Panel 6 (Eks,Key/Rec)

ELECTRONIC KEY SWITCH



Ref	Part	
1	<a href="#">6X98626003</a> Remote control unit assembly UR RADIO FREQUENCY 433MHz	<a href="#">Buy now</a>
1	<a href="#">6X98626013</a> Remote control unit assembly UR RADIO FREQUENCY 315MHz	<a href="#">Buy now</a>
2	<a href="#">6X98626101</a> Xmtr. comp. FOR 6X9-86260-03	<a href="#">Buy now</a>
2	<a href="#">6X98626111</a> Xmtr. Comp. FOR 6X9-86260-13	<a href="#">Buy now</a>
3	<a href="#">6X98626700</a> Case complete 1	<a href="#">Buy now</a>
4	<a href="#">6X98194800</a> Bracket	<a href="#">Buy now</a>
5	<a href="#">6X98554601</a> Band	<a href="#">Buy now</a>
6	<a href="#">6X98250901</a> Wire, sub lead	<a href="#">Buy now</a>
7	<a href="#">6X98258500</a> Cap 2	<a href="#">Buy now</a>
8	<a href="#">6X98258510</a> Cap 2	<a href="#">Buy now</a>
9	<a href="#">5JJ8215190</a> Fuse (5a)	<a href="#">Buy now</a>
10	<a href="#">69J8215B00</a> Cap (brown)	<a href="#">Buy now</a>
11	<a href="#">7038338311</a> Buzzer	<a href="#">Buy now</a>
12	<a href="#">9588006016</a> Bolt, flange(jl8)	<a href="#">Buy now</a>

## Switch & Panel 7



6X91100-U150

Ref	Part	
1	<a href="#">6X982570A1</a> Battery Switch Panel YMUS ONLY	<a href="#">Buy now</a>
2	<a href="#">6X98257120</a> Panel, switch	<a href="#">Buy now</a>
3	<a href="#">6X92248020</a> Seal assembly	<a href="#">Buy now</a>

# Disclaimer

This document is provided for convenience only. It is **not** an official Yamaha publication and is **not supplied, endorsed, or approved** by Yamaha Motor Co., Ltd.

Reasonable efforts are made to keep information accurate; however diagrams, part references, supersessions, descriptions, and applicability may contain errors or omissions. Specifications and part availability may change without notice.

You are responsible for confirming the correct parts for your engine (including model code, year, serial range, and any superseded part numbers) before ordering or fitting.