



Yamaha PSX6L1 2026

Parts Manual

www.floodmarine.co.uk

+44 2882 246 539

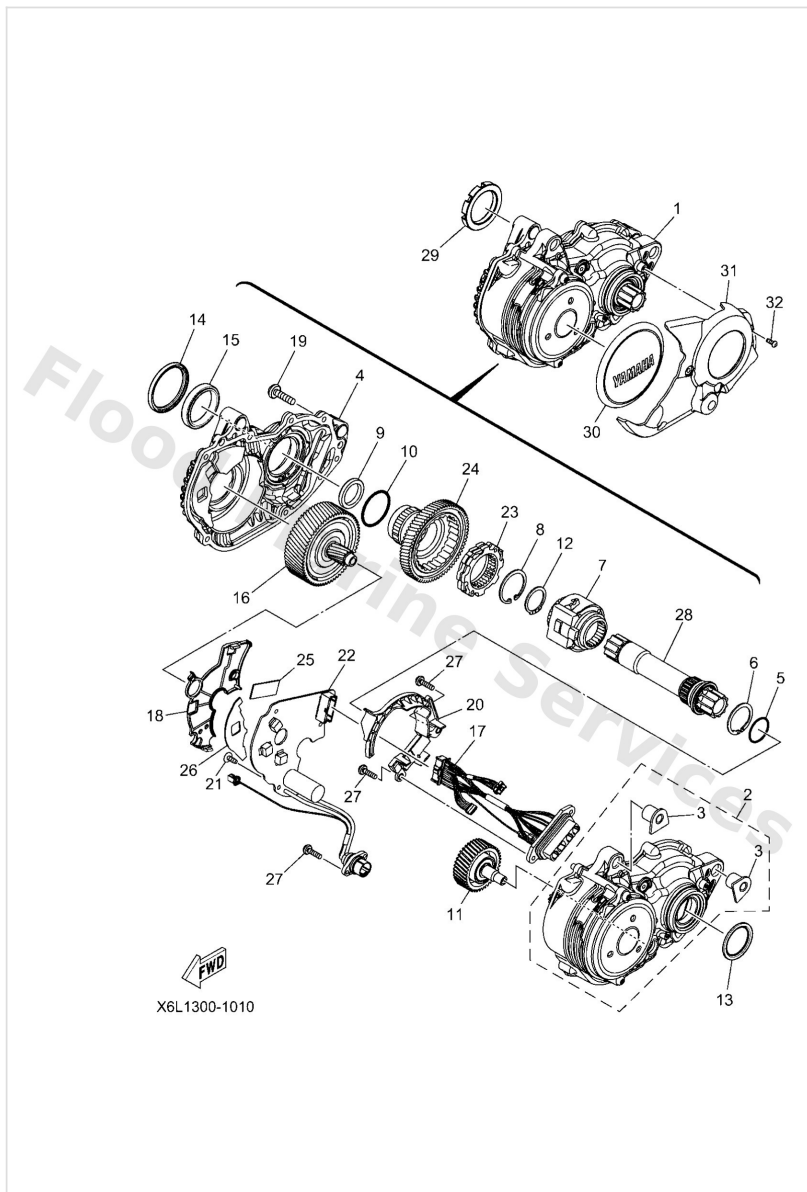
Authorised Yamaha Dealers



Contents

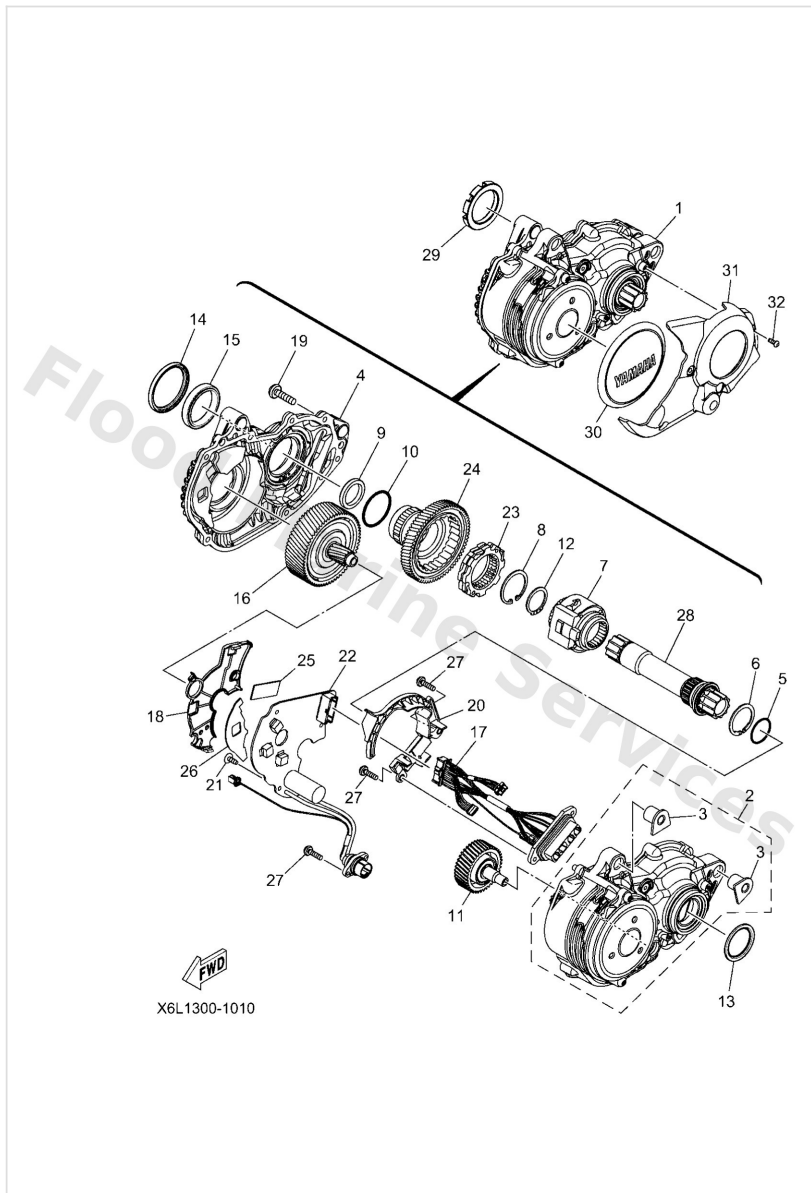
POWER UNIT	3
STEERING HANDLE & CABLE	6

Power Unit



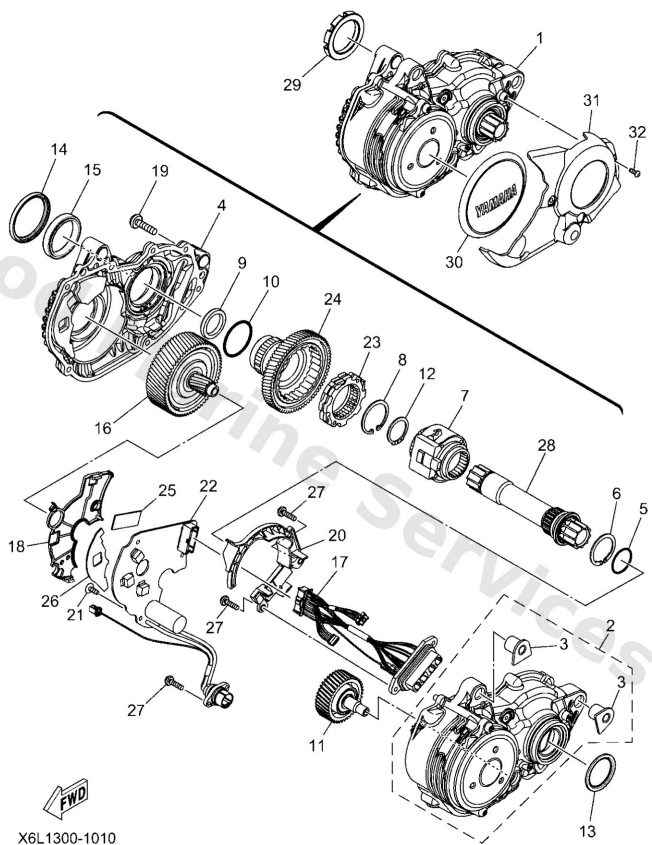
Ref	Part	
1	X6L1706110 - PW-X4, '26	Buy now
2	X4M1781000 Housing assembly	Buy now
3	X4M1518910 -	Buy now
4	X4M1751000 Housing comp.	Buy now
5	9321022010 O-ring	Buy now
6	9900924800 Circlip	Buy now
7	X2Y1706220 Torque Sensor assembly	Buy now
8	9900930500 Circlip (650)	Buy now
9	X0P1634700 Seal, dust	Buy now
10	9321032006 O-ring	Buy now
11	X3M1760F00 Idler shaft assembly	Buy now
12	9341022098 Circlip	Buy now
13	X4M1842810 Seal, dust	Buy now
14	X4M1634700 Seal, dust	Buy now
15	X4M1715800 Collar 1	Buy now

Power Unit



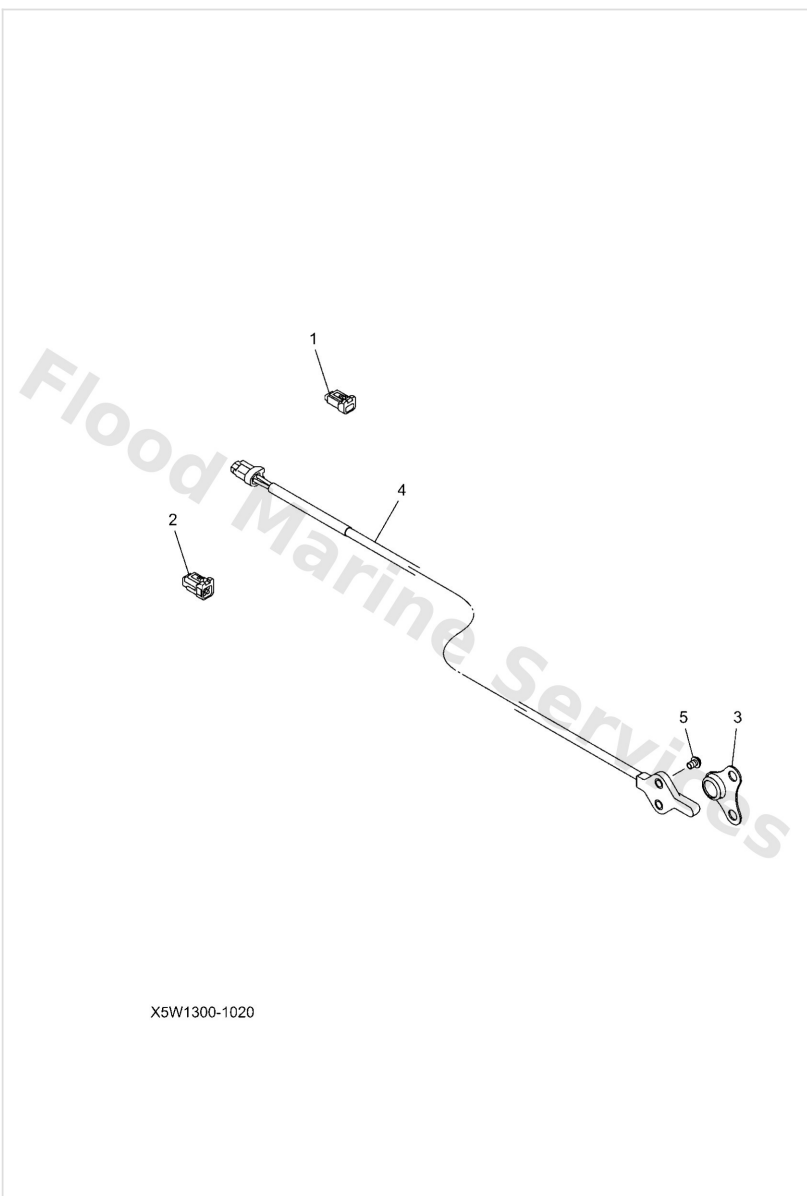
Ref	Part	
16	X3M1784001 -	Buy now
17	X3M86171R0 -	Buy now
18	X3M1752400 Holder	Buy now
19	9014904006 Screw	Buy now
20	X3M1575801 Guide, wire	Buy now
21	9016403009 Screw, tapping	Buy now
22	X6L8621210 -	Buy now
23	X2Y1676000 One-way clutch comp.	Buy now
24	X3M1661100 Clutch housing comp.	Buy now
25	X3M8A8B0M0 -	Buy now
26	X3M8A8B1M0 -	Buy now
27	9015703011 Screw, pan head	Buy now
28	X4M1786200 Axle, seal comp.	Buy now
29	X0P1746300 Nut, lock	Buy now
30	X6L1549000 -	Buy now

Power Unit



Ref	Part	
31	X4M2171100 Cover, side 1	Buy now
32	9201703008 Bolt, button head	Buy now

Steering Handle & Cable



Ref	Part	
1	X2Y859C400 Cap, connector	Buy now
2	X2Y859C410 Cap, connector	Buy now
3	X2Y8352Y00 Magnet comp. ROTOR MAGNET	Buy now
4	X2Y8167001 Pick-up assembly L660, H CONNECTOR	Buy now
5	9014903002 Screw	Buy now

Disclaimer

This document is provided for convenience only. It is **not** an official Yamaha publication and is **not supplied, endorsed, or approved** by Yamaha Motor Co., Ltd.

Reasonable efforts are made to keep information accurate; however diagrams, part references, supersessions, descriptions, and applicability may contain errors or omissions. Specifications and part availability may change without notice.

You are responsible for confirming the correct parts for your engine (including model code, year, serial range, and any superseded part numbers) before ordering or fitting.