



Yamaha RIGGING - METER 2010

Parts Manual

www.floodmarine.co.uk

+44 2882 246 539

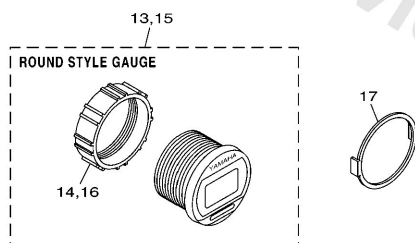
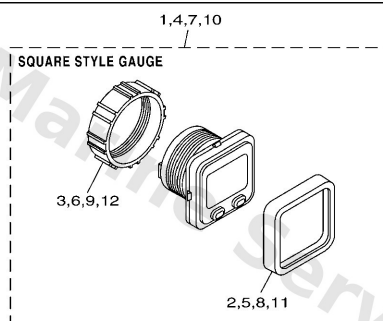
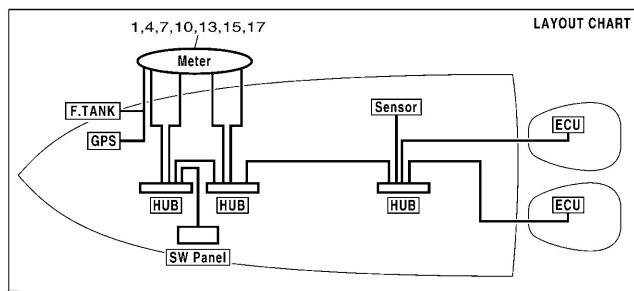
Authorised Yamaha Dealers



Contents

DIGITAL NETWORK GAUGE 1	3
DIGITAL NETWORK GAUGE 2	4
DIGITAL NETWORK GAUGE 3	7
DIGITAL NETWORK GAUGE 4	8
DIGITAL NETWORK GAUGE 5	9
DIGITAL NETWORK GAUGE 6	10
DIGITAL NETWORK GAUGE 7	11
ELECTRICAL	12
METER 1	13
METER 2	14
METER 3	16
METER 4	17
METER 5	18
METER 6	19
METER 7	21
METER 8	22
WIRE HARNESS 1	23
WIRE HARNESS 2	24

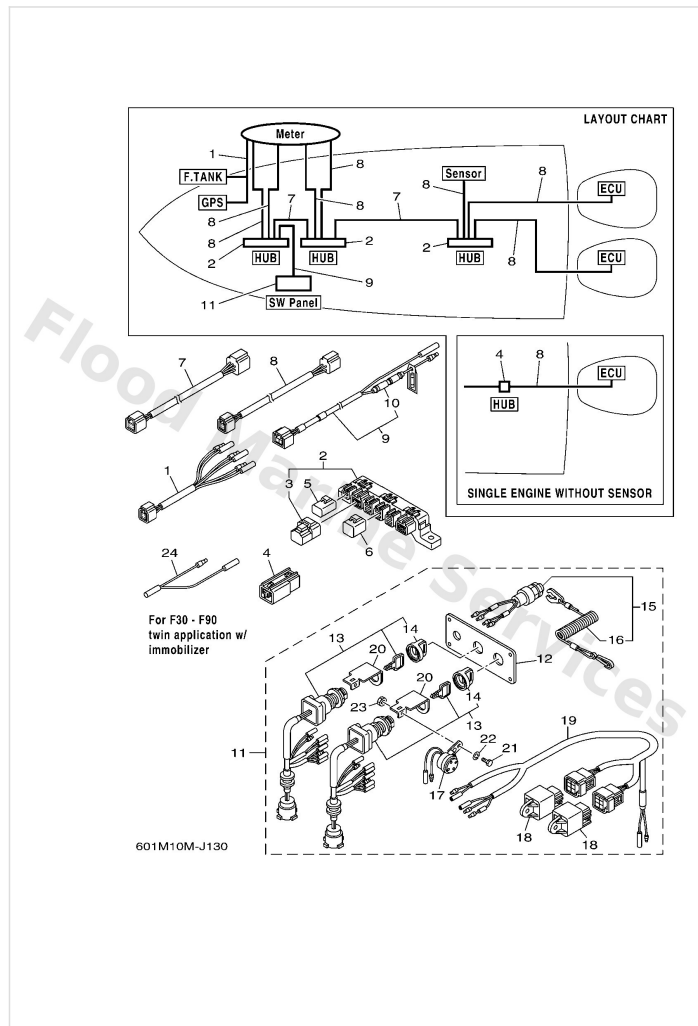
Digital Network Gauge 1



6011100-G880

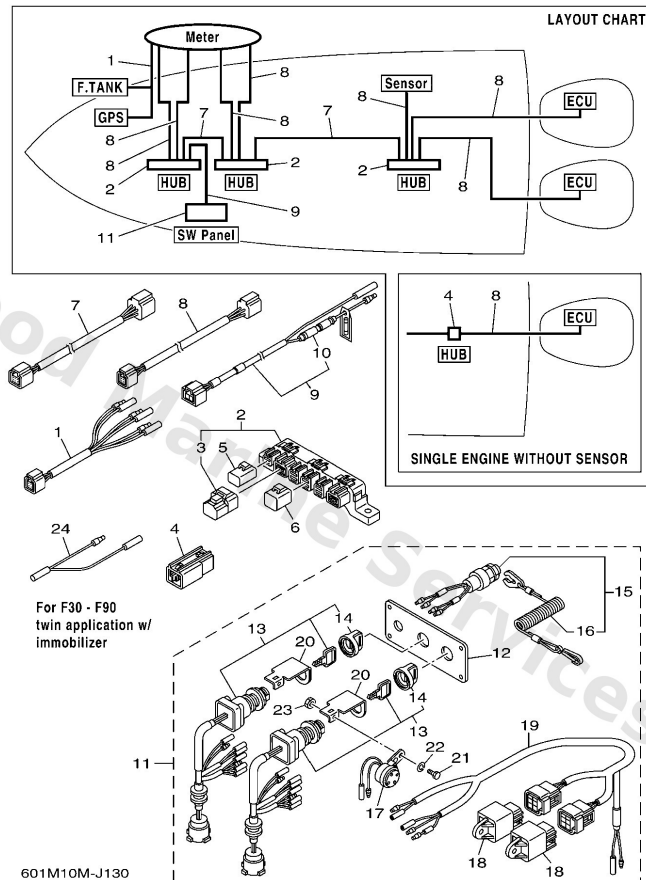
Ref	Part	
1	6Y88350T01 Tachometer, sq	Buy now
2	6Y88336300 Bezel, square	Buy now
3	6Y88438300 Nut, ring	Buy now
4	6Y88350S01 Speedometer Sq	Buy now
7	6Y88350F01 Fl mgt meter, sq FUEL MANAGEMENT	Buy now
10	6Y88350001 S&fm meter, sq SPEED & FUEL	Buy now
13	6Y88350T11 Tachometer, rd	Buy now
15	6Y88350011 S & fm meter, rd SPEED & FUEL	Buy now
17	6Y88351400 Plate, fitting UN	Buy now

Digital Network Gauge 2



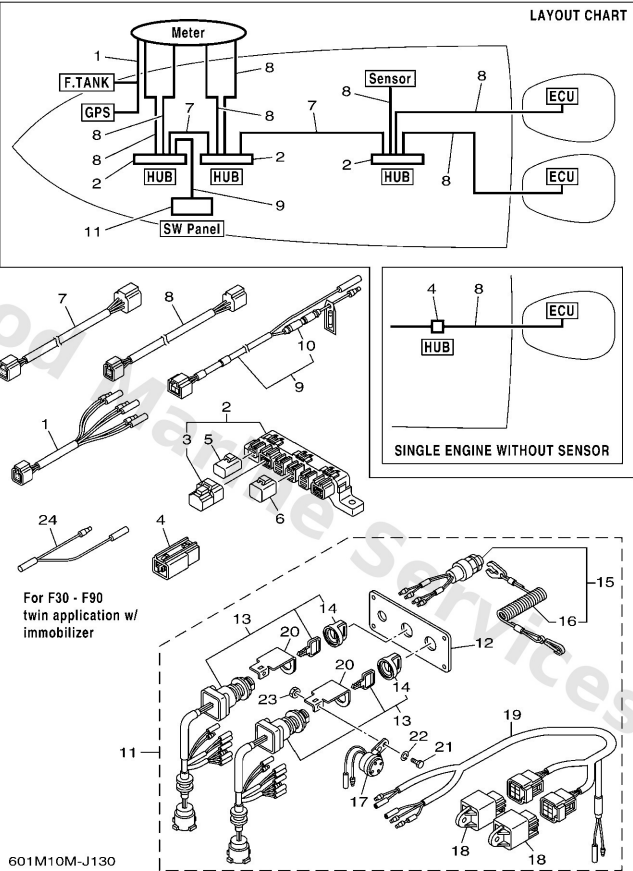
Ref	Part	
1	6Y88356N01 Lead, fuel tank & gps sender	Buy now
2	6Y88192001 Multi-hub UN	Buy now
3	6Y88537101 End of line resister	Buy now
4	6Y88192011 Single-hub	Buy now
5	6Y88258201 Red cap 1 (2pin) UN	Buy now
6	6Y88258211 White cap 1 (4pin) UN	Buy now
7	6Y88255301 Main bus wire 0.3m-1ft UR	Buy now
7	6Y88255311 Main bus wire 4.6m (15ft) UR	Buy now
7	6Y88255321 Main bus wire 6.1m (20ft) UR	Buy now
7	6Y88255331 Main bus wire 7.6m (25ft) UR	Buy now
7	6Y88255341 Main bus wire 9.1m (30ft) UR	Buy now
7	6Y88255350 Main bus wire 3.0m-10ft UR	Buy now
8	6Y88252101 1ft pigtail bus UR	Buy now
8	6Y88252111 Pigtail bus wire 0.6m-2ft UR	Buy now
8	6Y88252121 Pigtail bus wire 0.9m-3ft UR	Buy now

Digital Network Gauge 2



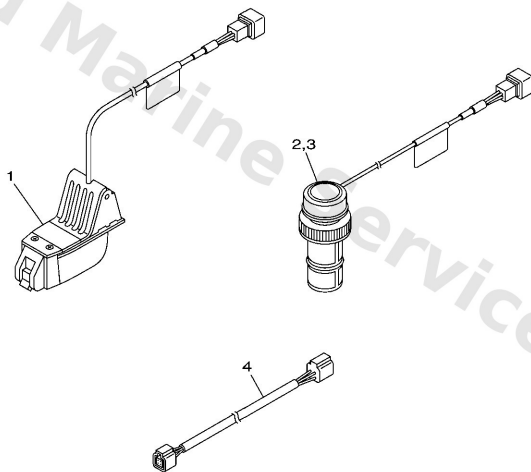
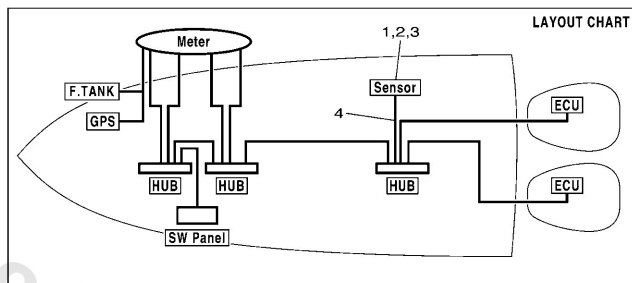
Ref	Part	
8	6Y88252131 Pigtail bus wire 1.8m-6ft UR	Buy now
8	6Y88252141 9ft pigtail bus UR	Buy now
8	6Y88252151 Pigtail bus wire 3.6m-12ft UR	Buy now
9	6Y88355301 8ft power wire	Buy now
10	6G18215100 Fuse (10a)	Buy now
11	6Y88257002 Panel switch assembly	Buy now
12	6Y88257101 Plate, panel switch	Buy now
13	6Y88251002 Main switch assembly	Buy now
14	6768257700 Cap, key	Buy now
15	6K18257500 Engine stop switch assembly	Buy now
16	6828255600 Lanyard, stop switch	Buy now
17	6R58338300 Buzzer	Buy now
18	68V8195000 Relay assembly	Buy now
19	6Y88250700 Lead, ignition switch relay	Buy now
20	64D8258100 Stay, cord clamp	Buy now

Digital Network Gauge 2



Ref	Part	
21	9730305012 Bolt, hexagon	Buy now
22	9290305100 Ybs67-5 washer, spring	Buy now
23	9530305700 Nut (656)	Buy now
24	6H58131500 Wire, lead FOR EUR	Buy now

Digital Network Gauge 3



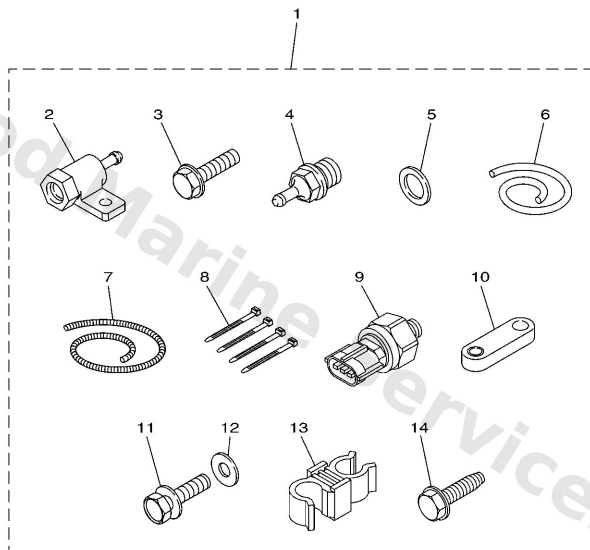
6Y82110-E030

Ref	Part	
1	6Y88368801 Transom Mount Triducer	Buy now
2	6Y88368811 Plastic Thru-Hull Triducer PLASTIC BODY	Buy now
3	6Y88368820 Bronze Thru-Hull Triducer BRONZE BODY	Buy now
4	6Y88252101 1ft pigtail bus UR	Buy now
4	6Y88252111 Pigtail bus wire 0.6m-2ft UR	Buy now
4	6Y88252121 Pigtail bus wire 0.9m-3ft UR	Buy now
4	6Y88252131 Pigtail bus wire 1.8m-6ft UR	Buy now
4	6Y88252141 9ft pigtail bus UR	Buy now
4	6Y88252151 Pigtail bus wire 3.6m-12ft UR	Buy now

Digital Network Gauge 4

Cooling water pressure sensor

Part No.	Remarks
60V-8A4L0-12	Fuel injected F30-F115, HPDI



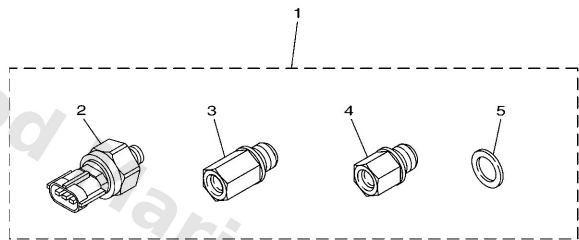
601M10M-J150

Ref	Part	
1	60V8A4L012 Sensor, module	Buy now
2	60V8366D00 Adaptor, input	Buy now
3	9589506025 Bolt, flange deep recess	Buy now
4	60V8366700 Sender, water pressure	Buy now
5	9043014115 Gasket (663)	Buy now
6	9044507018 Hose (I1457)	Buy now
7	9044707015 Hose, cover (l: 1300mm)	Buy now
8	9046511M10 Clamp	Buy now
9	6AW8366B00 Sensor, water pressure	Buy now
10	60V8257V00 Plate, connector	Buy now
11	9709506016 Bolt, hexagon deep recess	Buy now
12	9299506600 Washer, plain (646)	Buy now
13	9046409021 Clamp	Buy now
14	9010906M81 Bolt	Buy now

Digital Network Gauge 5

Cooling water pressure sensor

Part No.	Remarks
69J-8A4L0-11	F150-F250



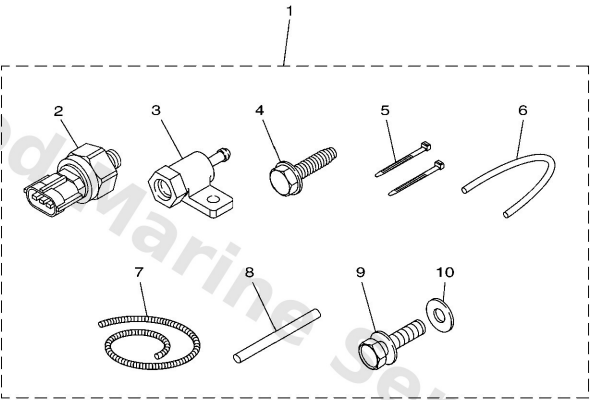
601M10M-H160

Ref	Part	
1	69J8A4L011 Water pressure sensor kit	Buy now
2	6AW8366B00 Sensor, water pressure	Buy now
3	69J8366C00 Adaptor, input	Buy now
4	63P8366C00 Adaptor, input	Buy now
5	9043014115 Gasket (663)	Buy now

Digital Network Gauge 6

Speed sensor

Part No.	Remarks
60V-8A4L1-11	Fuel injected F50-F250, HPDI



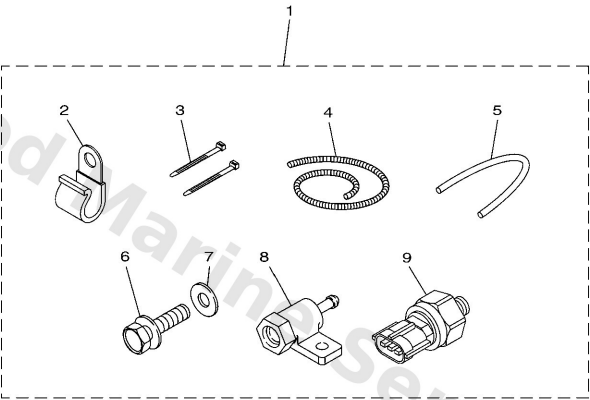
601M10M-H170

Ref	Part	
1	60V8A4L111 Sensor, module 1	Buy now
2	6AW8366B00 Sensor, water pressure	Buy now
3	60V8366D00 Adaptor, input	Buy now
4	9010906M81 Bolt	Buy now
5	9046511M10 Clamp	Buy now
6	9044507017 Hose (I550)	Buy now
7	9044707013 Hose, cover (I: 700mm)	Buy now
8	60V4262900 Seal	Buy now
9	9709506016 Bolt, hexagon deep recess	Buy now
10	9299506600 Washer, plain (646)	Buy now

Digital Network Gauge 7

Speed sensor

Part No.	Remarks
6AW-8A4L1-01	F300/F350 * Additional transom pitot tube (688-83556-01) and pressure tube(688-83557-00) required.

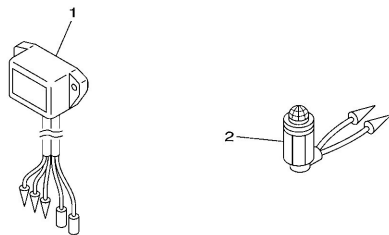


601M10M-H180

Ref	Part	
1	6AW8A4L101 Sensor, module 1	Buy now
2	9046506M86 Clamp	Buy now
3	9046514M66 Clamp	Buy now
4	9044707015 Hose, cover (l: 1300mm)	Buy now
5	9044507018 Hose (l:1457)	Buy now
6	9709506016 Bolt, hexagon deep recess	Buy now
7	9299506600 Washer, plain (646)	Buy now
8	60V8366D00 Adaptor, input	Buy now
9	6AW8366B00 Sensor, water pressure	Buy now

Electrical

CHARGE WARNING UNIT



All electrical start models
with a rectifier/ regulator

BATTERY WIRING



601M10M-H110

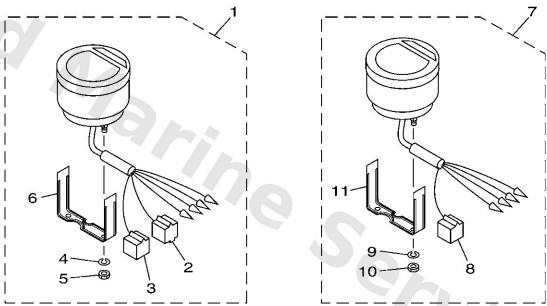
Ref	Part	
1	6978190160 -	Buy now
2	6638430101 Pilot lamp ass'y 12V	Buy now
3	68F8194902 Wire, lead UR	Buy now
3	69J8194902 Wire, lead (isolator, 3.8m) UR	Buy now

Meter 1

DIGITAL TACHOMETER

Ref. No.	Description	Part No.	Applicable model
1	Multifunction	6Y5-8350T-03	250G,L250G
7	Multifunction w/o "Check engine" and "Water in fuel" indicators	6Y5-8350T-90	40 (3-cyl)-300 w/ oil injection, PTT (except 250G/L250G), F30-F250 (*1)w/ PTT

(*1) Mechanical RC



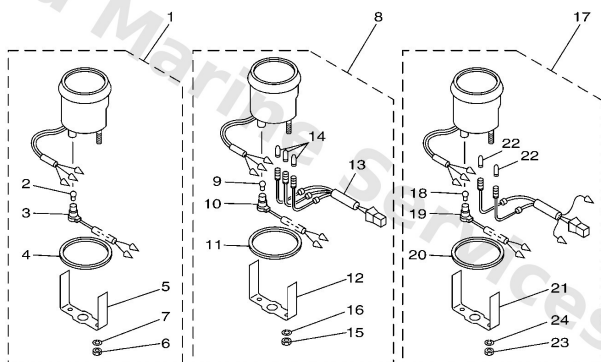
601M10M-J010

Ref	Part	
1	6Y58350T03 Digital tachometer assembly	Buy now
2	9E45004433 Housing, connector (m-4-w) M-4-W	Buy now
3	9E45004533 Housing, f-4-w(5pcs) F-4-W	Buy now
4	9299004100 Ybs67-4 washer, spring	Buy now
5	9538004600 Nut,hex	Buy now
6	6Y58355XT1 Bracket, meter 1	Buy now
7	6Y58350T90 Tachometer assembly	Buy now

Meter 2

ANALOG TACHOMETER

Ref. No.	Description	Part No.	Applicable model
1	Without indicators BLK panel	6Y7-83540-20	Pre-mixed 9.9-225 F9.9-F25(FT/T25), and FT8 (T8)
	Without indicators WHT panel	6Y7-83540-30	
8	With 3 oil indicators BLK panel	6Y7-83540-00	250G, L250G
	With 3 oil indicators WHT panel	6Y7-83540-10	
17	With overheat & oil indicators BLK panel	6Y7-83540-80	40 (3-cyl)-300 w/ oil injection (except 250G/ L250G) F30-F250 [Mechanical RC]
	With overheat & oil indicators WHT panel	6Y7-83540-90	



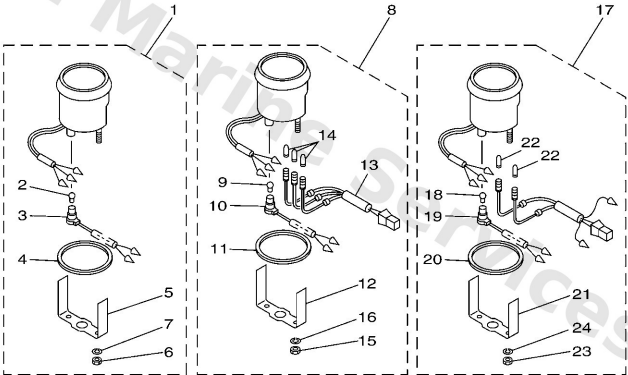
601M10M-J020

Ref	Part	
1	6Y78354020 Tachometer assembly UR WITHOUT OIL LAMP	Buy now
1	6Y78354030 Tachometer assembly UR WITHOUT OIL LAMP	Buy now
2	6Y58351700 Bulb (12v-1.7w)	Buy now
3	6Y58353610 Socket, meter FOR 6Y7-83540-30	Buy now
3	6Y58353640 Socket, meter FOR 6Y7-83540-20	Buy now
4	6Y58352300 Damper	Buy now
5	6Y58351400 Plate, fitting	Buy now
6	9538005600 Nut, hexagon (663)	Buy now
7	9299005100 Ybs67-5 washer, spring	Buy now
8	6Y78354000 Tachometer assembly UR WITH OIL LAMP	Buy now
8	6Y78354010 Tachometer assembly UR WITH OIL LAMP	Buy now
13	6Y58350903 Socket cord assembly	Buy now
14	6Y58351800 Bulb (12v-1.7w) t6.5	Buy now
15	9530305600 Nut, hexagon (663)	Buy now
16	9290305100 Ybs67-5 washer, spring	Buy now

Meter 2

ANALOG TACHOMETER

Ref. No.	Description	Part No.	Applicable model
1	Without indicators BLK panel	6Y7-83540-20	Pre-mixed 9.9-225 F9.9-F25(F7/T25), and FT8 (T8)
	Without indicators WHT panel	6Y7-83540-30	
8	With 3 oil indicators BLK panel	6Y7-83540-00	250G, L250G
	With 3 oil indicators WHT panel	6Y7-83540-10	
17	With overheat & oil indicators BLK panel	6Y7-83540-80	40 (3-cyl)-300 w/ oil injection (except 250G/ L250G) F30-F250 [Mechanical RC]
	With overheat & oil indicators WHT panel	6Y7-83540-90	



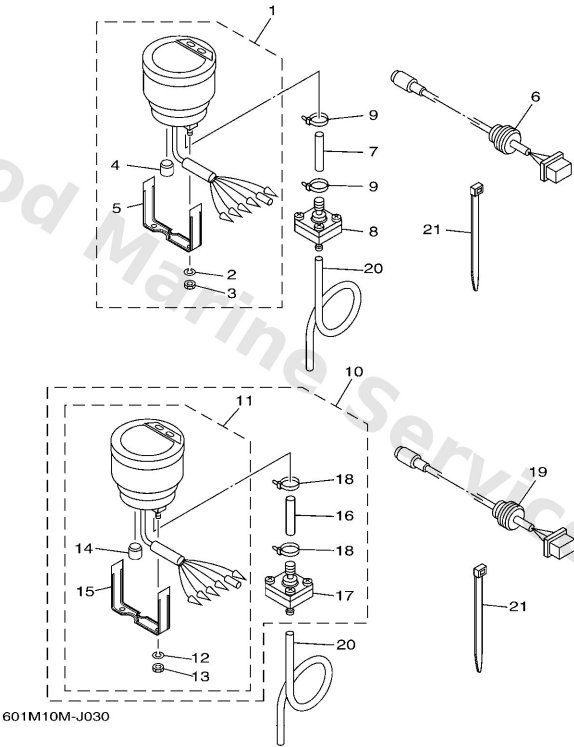
601M10M-J020

Ref	Part	
17	6Y78354080 Tachometer assembly UR WITH OIL/TEMP LAMP	Buy now
17	6Y78354090 Tachometer assembly UR WITH OIL/TEMP LAMP	Buy now

Meter 3

DIGITAL SPEEDOMETER

Ref. No.	Description	Part No.	Applicable model
1	Digital multifunction	6Y5-83570-S5	40 (3-cyl)-300
10		6Y5-83500-30	F30-F250 (Mechanical RC) For Yamaha manufactured boats (Japan)

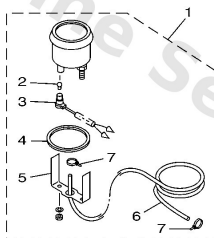


Ref	Part	
1	6Y583570S5 Speedometer assembly	Buy now
2	9299004100 Ybs67-4 washer, spring	Buy now
3	9538004600 Nut,hex	Buy now
4	6Y583533T2 Grommet	Buy now
5	6Y58355XT1 Bracket, meter 1	Buy now
6	6Y587122S0 Cord assembly 1 AP	Buy now
7	6Y58355731 Tube	Buy now
8	6Y58372800 Connector assembly	Buy now
9	9046511M10 Clamp	Buy now
10	6Y58350030 Meter assembly	Buy now
11	6Y58357030 Speedometer assembly	Buy now
20	6Y58355700 Tube (8m)	Buy now

Meter 4

ANALOG SPEEDOMETER

Description	Part No.	Applicable model
Analog, BLK panel 0 – 75 mph (20 – 120 km/h)	6Y7-83510-00	40 (3-cyl)-300 F30-F250 [Mechanical RC]
Analog, WHT panel 0 – 75 mph (20 – 120 km/h)	6Y7-83510-10	
Analog, BLK panel 0 – 50 mph (20 – 80 km/h)	6Y7-83510-20	
Analog, WHT panel 0 – 50 mph (20 – 80 km/h)	6Y7-83510-30	
Analog, BLK panel 0 – 120 km/h (15 – 65 knot)	6Y7-83510-40	
Analog, WHT panel 0 – 120 km/h (15 – 65 knot)	6Y7-83510-50	
Analog, BLK panel 0 – 80 km/h (10 – 43 knot)	6Y7-83510-60	
Analog, WHT panel 0 – 80 km/h (10 – 43 knot)	6Y7-83510-70	



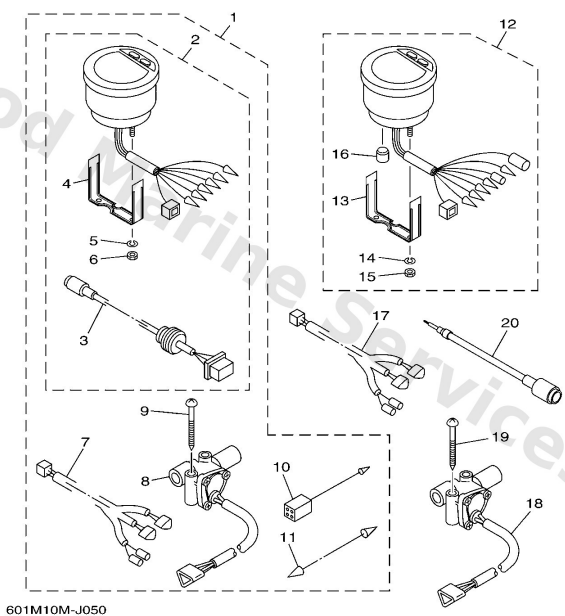
601M10M-J040

Ref	Part	
1	6Y78351000 Speedometer assembly (black) UR	Buy now
1	6Y78351010 Speedometer assembly (white) UR	Buy now
1	6Y78351020 Speedometer assembly (black) UR	Buy now
1	6Y78351030 Speedometer assembly (50Mph) UR	Buy now
1	6Y78351040 Speedometer assembly (120km/h) (bl) UR	Buy now
1	6Y78351050 Speedometer assembly (120Km/H) UR	Buy now
1	6Y78351060 Speedometer assembly (80km/h) (bla) UR	Buy now
1	6Y78351070 Speedometer assembly (White) UR	Buy now
2	6Y58351700 Bulb (12v-1.7w)	Buy now
3	6Y58353640 Socket, meter	Buy now
4	6Y58352300 Damper	Buy now
5	6Y58351400 Plate, fitting	Buy now
6	6888355700 Tube (8m)	Buy now
7	9046511M10 Clamp	Buy now

Meter 5

FUEL MANAGEMENT GAUGE

Ref. No.	Description	Part No.	Applicable model
1	Fuel mgt gauge kit 1 For single-engine	6Y5-W0088-54	115-300 F115-F250 (Mechanical RC)
	Fuel mgt gauge kit 2 For twin-engine	6Y5-W0088-65	
12	Fuel mgt gauge with speedometer	6Y5-83500-40	



601M10M-J050

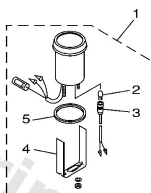
Ref	Part	
1	6Y5W008854 Digital fuel meter kit (single UR	Buy now
1	6Y5W008865 Digital Fuel Meter Kit (Twin) UR	Buy now
2	6Y583500F2 Fuel meter movement assembly	Buy now
3	6Y587122S0 Cord assembly 1	Buy now
4	6Y58355XT1 Bracket, meter 1	Buy now
5	9299004100 Ybs67-4 washer, spring	Buy now
6	9538004600 Nut,hex	Buy now
17	6Y583553F1 Wire, lead FOR 6Y5-83500-40	Buy now
8	6Y58575202 Sender unit assembly, fuel meter FOR 6Y5-W0088-54	Buy now
9	9015806003 Screw, wood FOR 6Y5-W0088-54	Buy now
10	6Y58211700 Wire, lead	Buy now
11	7038253100 Wire, lead FOR 6Y5-W0088-65	Buy now
12	6Y58350040 Meter assembly	Buy now
16	6Y583533T2 Grommet	Buy now
20	6Y585721F0 Wire, lead AP	Buy now

Meter 6

ANALOG TRIM METER

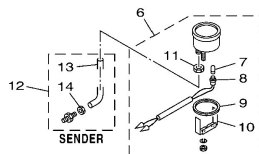
Description	Part No.	Applicable model
4-pin coupler BLK panel	6Y7-83670-00	Premixed 40 (3-cyl)-225 w/ PTT, 250G, L250G
Bullet connector BLK panel	6Y7-83670-40	40 (3-cyl)-300 w/ oil injection, PTT (except 250G & L250G), F30-F250 (*) w/ PTT, T25(*) Using as a set with tachometer, 6Y7-83540-80
4-pin coupler WHT panel	6Y7-83670-20	Premixed 40 (3-cyl)-225 w/ PTT, 250G, L250G
Bullet connector WHT panel	6Y7-83670-50	40 (3-cyl)-300 w/ oil injection, PTT (except 250G & L250G), F30-F250 (*) w/ PTT, T25(*) Using as a set with tachometer, 6Y7-83540-90

(*) Mechanical RC
(*) T25 for US



COOLANT PRESSURE METER

Description	Part No.	Applicable model
kPa, Black panel	6Y7-83660-00	
kPa, White panel	6Y7-83660-20	40 (3-cyl) - 300
psi, Black panel	6Y7-83660-10	F25(FT/T25) - F250 (Mechanical RC)
psi, White panel	6Y7-83660-30	



601M10M-J060

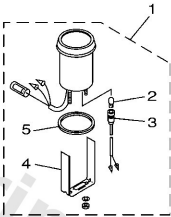
Ref	Part	
1	6Y78367000 Trim meter assembly. UR	Buy now
1	6Y78367020 Trim meter assembly. UR	Buy now
1	6Y78367040 Trim meter assembly. UR	Buy now
1	6Y78367050 Trim Meter assembly. UR	Buy now
2	6Y58351800 Bulb (12v-1.7w) t6.5	Buy now
3	6Y58353600 Socket, meter	Buy now
4	6Y58354400 Plate, fitting	Buy now
5	6888366400 Damper	Buy now
6	6Y78366000 Water pressure meter assembly UR	Buy now
6	6Y78366010 Water Pressure Meter assembly UR	Buy now
6	6Y78366020 Water Pressure Meter assembly UR	Buy now
6	6Y78366030 Water Pressure Meter assembly UR	Buy now
10	6888366500 Plate, fitting	Buy now
11	6638366800 Nut, nipple	Buy now
12	6888366700 Sender	Buy now

Meter 6

ANALOG TRIM METER

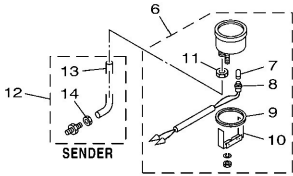
Description	Part No.	Applicable model
4-pin coupler BLK panel	6Y7-83670-00	Premixed 40 (3-cyl)-225 w/ PTT, 250G, L250G
Bullet connector BLK panel	6Y7-83670-40	40 (3-cyl)-300 w/ oil injection, PTT (except 250G & L250G), F30-F250 (*1) w/ PTT, T25(*2) Using as a set with tachometer, 6Y7-83540-60
4-pin coupler WHT panel	6Y7-83670-20	Premixed 40 (3-cyl)-225 w/ PTT, 250G, L250G
Bullet connector WHT panel	6Y7-83670-50	40 (3-cyl)-300 w/ oil injection, PTT (except 250G & L250G), F30-F250 (*1) w/ PTT, T25(*2) Using as a set with tachometer, 6Y7-83540-90

(*1) Mechanical RC
(*2) T25 for US



COOLANT PRESSURE METER

Description	Part No.	Applicable model
kPa, Black panel	6Y7-83660-00	
kPa, White panel	6Y7-83660-20	40 [3-cyl] - 300
psi, Black panel	6Y7-83660-10	F25(FT/T25) - F250 [Mechanical RC]
psi, White panel	6Y7-83660-30	



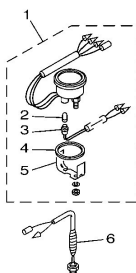
601M10M-J060

Ref	Part	
13	6888366600 Tube	Buy now

Meter 7

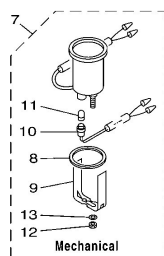
COOLANT TEMP. METER

Description	Part No.	Applicable model
Black panel	6Y7-83590-00	40 [3-cylinder] – 300
White panel	6Y7-83590-10	F25(F1/T25) – F250 [Mechanical RC]

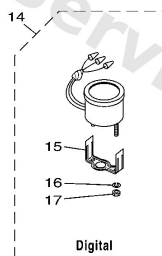


HOUR METER

Ref. No.	Description	Part No.	Applicable model
7	Mechanical	6Y5-83504-01	All electrical start models
14	Digital, Black panel	6Y7-83504-00	
	Digital, White panel	6Y7-83504-10	



601M10M-J070

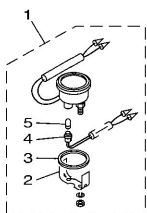


Ref	Part	
1	6Y78359000 Water temperature assembly UR	Buy now
1	6Y78359010 Water temperature assembly UR	Buy now
2	6Y58351800 Bulb (12v-1.7w) t6.5	Buy now
3	6Y58353600 Socket, meter	Buy now
4	6888366400 Damper	Buy now
5	6Y58354400 Plate, fitting	Buy now
6	6888359100 Thermo unit	Buy now
7	6Y58350401 Hour meter assembly	Buy now
9	6Y58357700 Plate, fitting	Buy now
12	9530304600 Nut, hexagon (663)	Buy now
13	9299004100 Ybs67-4 washer, spring	Buy now
14	6Y78350400 Hour meter assembly UR	Buy now
14	6Y78350410 Hour meter assembly UR	Buy now
15	6Y58355XH0 Bracket, meter 1	Buy now
17	9538004600 Nut,hex	Buy now

Meter 8

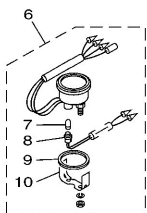
VOLTAGE METER

Description	Part No.	Applicable model
DC 12 volts power supply Black panel	6Y7-83503-00	All electrical start models
DC 12 volts power supply White panel	6Y7-83503-10	



FUEL METER

Description	Part No.	Applicable model
For Yamaha sensor (5 – 105 Ω) Black panel	6Y7-85750-00	All electrical start models
For ABYC sensor (30 – 240 Ω) Black panel	6Y7-85750-10	
For Yamaha sensor (5 – 105 Ω) White panel	6Y7-85750-20	
For ABYC sensor (30 – 240 Ω) White panel	6Y7-85750-30	

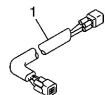


601M10M-J080

Ref	Part	
1	6Y78350300 Voltmeter assembly UR	Buy now
1	6Y78350310 Voltmeter assembly UR	Buy now
2	6Y58354400 Plate, fitting	Buy now
3	6888366400 Damper	Buy now
4	6Y58353600 Socket, meter	Buy now
5	6Y58351800 Bulb (12v-1.7w) t6.5	Buy now
6	6Y78575000 Fuel meter assembly UR	Buy now
6	6Y78575010 Fuel meter assembly UR	Buy now
6	6Y78575020 Fuel meter assembly UR	Buy now
6	6Y78575030 Fuel meter assembly UR	Buy now

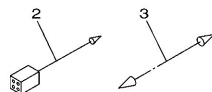
Wire Harness 1

REMOTE-OIL TANK HARNESS

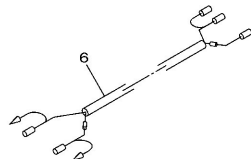
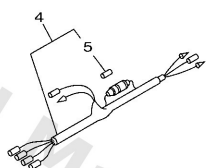


For V4, V6 oil injection model

ACCESSORY LEAD

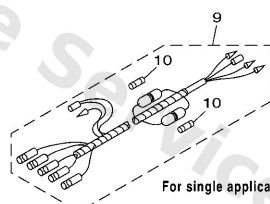
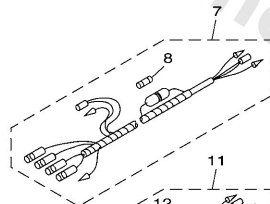


METER HARNESS (For analog meter)

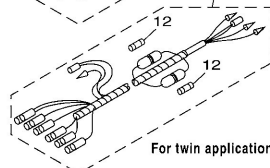


For pre-mixed model

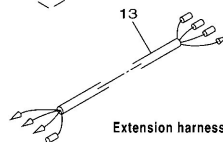
METER HARNESS (For digital meter)



For single application



For twin application



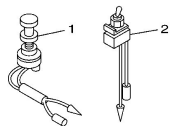
Extension harness

601M10M-J090

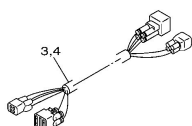
Ref	Part	
1	6R38572130 Wire, lead UR (4P)	Buy now
1	6R38572150 Wire, lead UR (4P)	Buy now
1	6R38572180 Wire, lead UR (4P)	Buy now
2	6Y58211700 Wire, lead UR	Buy now
2	6Y58214900 Wire, lead 3 UR	Buy now
3	7038253100 Wire, lead L/H MODEL	Buy now
4	6Y58355300 Wire, lead (l=2.5m)	Buy now
5	1E68215100 Fuse (10a)	Buy now
6	6Y58355310 Wire, lead	Buy now
7	6Y58355320 Wire, lead (l=2.5m) L/H MODEL	Buy now
9	6Y583553M0 Wire, lead (l=2.5m)	Buy now
11	6Y583553N0 Wire, lead (l=2.5m)	Buy now
13	6Y58356N00 Wire, lead	Buy now

Wire Harness 2

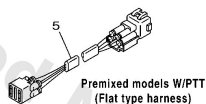
LAMP SWITCH



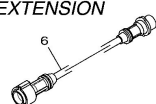
COMBINATION
TRIM AND OIL LEAD



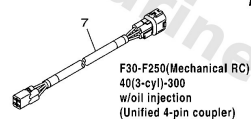
TRIM METER LEAD



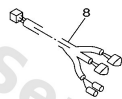
PT/T SWITCH
LEAD EXTENSION



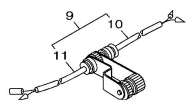
TRIM AND OIL LEAD



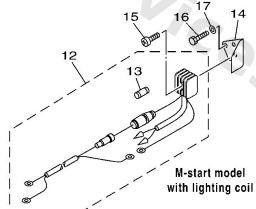
FUEL MANAGEMENT GAUGE
HARNESS



LIGHTING COIL
EXTENSION HARNESS

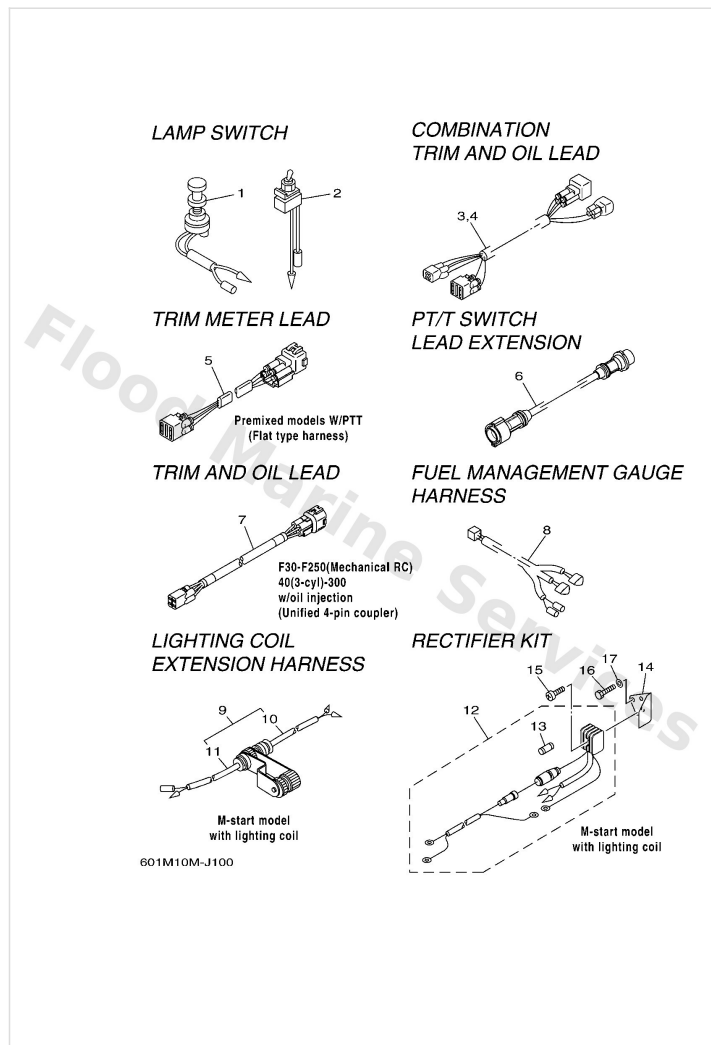


RECTIFIER KIT



Ref	Part	
1	6888252000 Lamp switch assembly	Buy now
2	6888252600 Switch, lamp	Buy now
3	64D8255350 Extension, wire lea (5m) UR FOR (L)250G	Buy now
3	64D8255370 Extension, wire lead (7m) UR FOR (L)250G	Buy now
3	64D8255380 Extension, wire lead (8m) UR FOR (L)250G	Buy now
3	64D8255390 Extension, wire lead (9m) UR FOR (L)250G	Buy now
4	68F8255350 Extension, wire lea (5m) UR FOR (L)250G	Buy now
4	68F8255370 Extension, wire lead (7m) UR FOR (L)250G	Buy now
4	68F8255380 Extension, wire lead (8m) UR FOR (L)250G	Buy now
4	68F8255390 Extension, wire lead (9m) UR FOR (L)250G	Buy now
4	68F82553A0 Extension, Wire Lead (L=10.5M) UR FOR (L)250G	Buy now
5	6R38255330 Wire, lead UR (4P)	Buy now
5	6R38255350 Wire, lead UR (4P)	Buy now
5	6R38255370 Extension, wire lead (for trim UR (4P)	Buy now
5	6R38255380 Wire, lead UR (4P)	Buy now

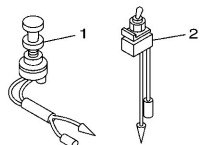
Wire Harness 2



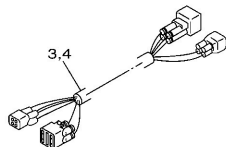
Ref	Part	
5	6R38255390 Extension, wire lead (for trim UR 4P)	Buy now
6	6888258611 Extension, wire harness L)2M(7P)	Buy now
7	6Y58365300 Wire, lead UR 4P,5M	Buy now
7	6Y58365310 Wire, lead UR 4P,6M	Buy now
7	6Y58365320 Wire, lead UR 4P,7M	Buy now
7	6Y58365330 Wire, lead UR 4P,8M	Buy now
7	6Y58365340 Wire, lead UR 4P,9M	Buy now
7	6Y58365350 Trim oil harness UR 4P,10.5M	Buy now
8	6Y583553F1 Wire, lead	Buy now
9	6828438000 2p concent assembly	Buy now
10	6828438100 2p concent 1	Buy now
11	6828438200 2p concent 2	Buy now
12	6768197001 Rectifier assembly	Buy now
13	6638215100 Fuse	Buy now
14	6778197500 Plate, Rectifier Fitting	Buy now

Wire Harness 2

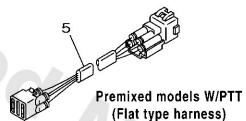
LAMP SWITCH



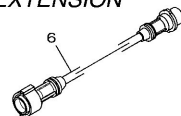
COMBINATION
TRIM AND OIL LEAD



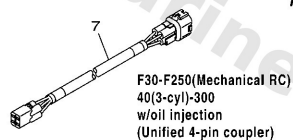
TRIM METER LEAD



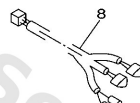
PT/T SWITCH
LEAD EXTENSION



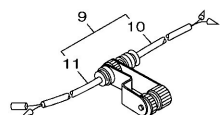
TRIM AND OIL LEAD



FUEL MANAGEMENT GAUGE
HARNESS

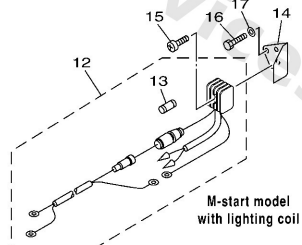


LIGHTING COIL
EXTENSION HARNESS



601M10M-J100

RECTIFIER KIT



Ref	Part	
15	9788005025 Screw, panhead (a93)	Buy now
16	9701306010 Bolt(63v)	Buy now
17	9290306600 Washer, plain (646)	Buy now

Disclaimer

This document is provided for convenience only. It is **not** an official Yamaha publication and is **not supplied, endorsed, or approved** by Yamaha Motor Co., Ltd.

Reasonable efforts are made to keep information accurate; however diagrams, part references, supersessions, descriptions, and applicability may contain errors or omissions. Specifications and part availability may change without notice.

You are responsible for confirming the correct parts for your engine (including model code, year, serial range, and any superseded part numbers) before ordering or fitting.